

3D PAPER CRAFT

[Seasons & Holidays]

Christmas Wreath



The customs of Christmas as we know it come from the traditional celebration of the birth of Christ, which was combined with the harvest and winter solstice festivals in ancient Rome. From ancient times, the celebration has involved making offerings and decorating with evergreens, as well as exchanging gifts.

Wreaths that are displayed at Christmas time are in the form of a circle, signifying eternity. They also serve to wish people happiness in the new year. Wreaths are decorated with candles symbolizing the sun at winter solstice, and with holly, evergreens, red berries, and pinecones, symbolizing the harvest, which might have come down since the time of ancient Rome.

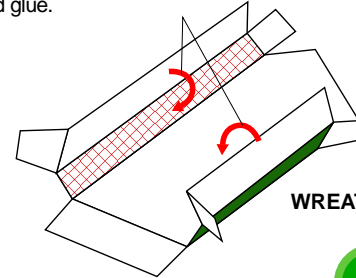
* This wreath is about 30 cm (one foot) in diameter.

Directions

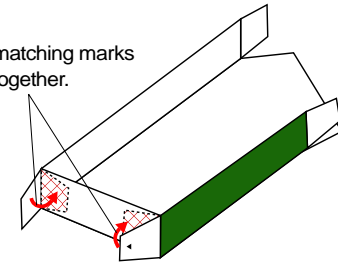
1 Build the WREATH SEGMENT



① Fold the side pieces labeled "glue reverse side" and glue.



② Align the matching marks and glue together.



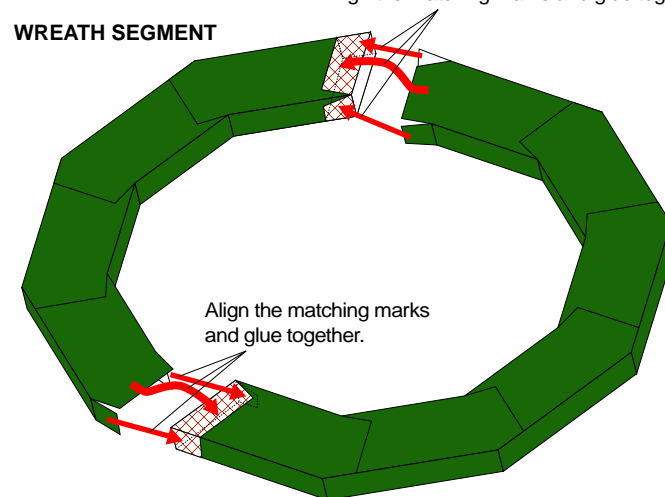
*Build 10 pieces in the same way.

2 Assemble the WREATH SEGMENT

* Align the 10 segments and glue together to form a circle.

WREATH SEGMENT

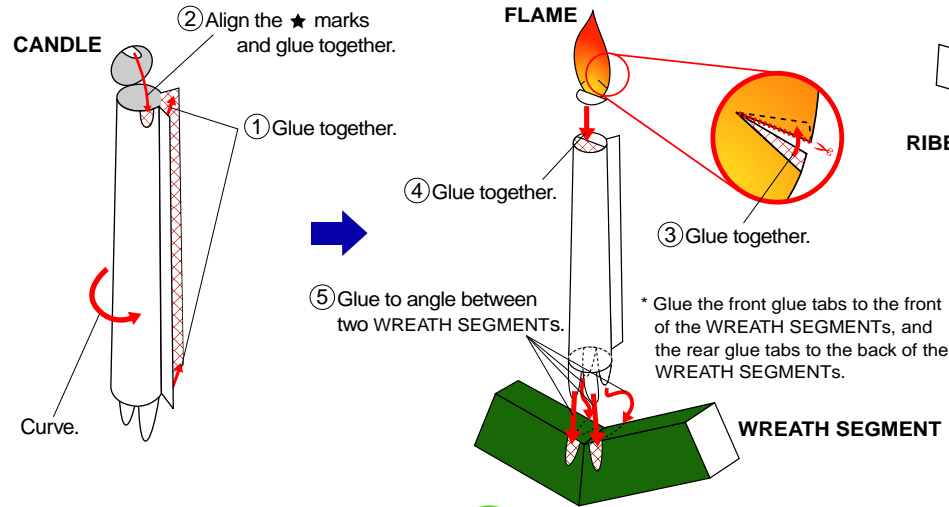
Align the matching marks and glue together.



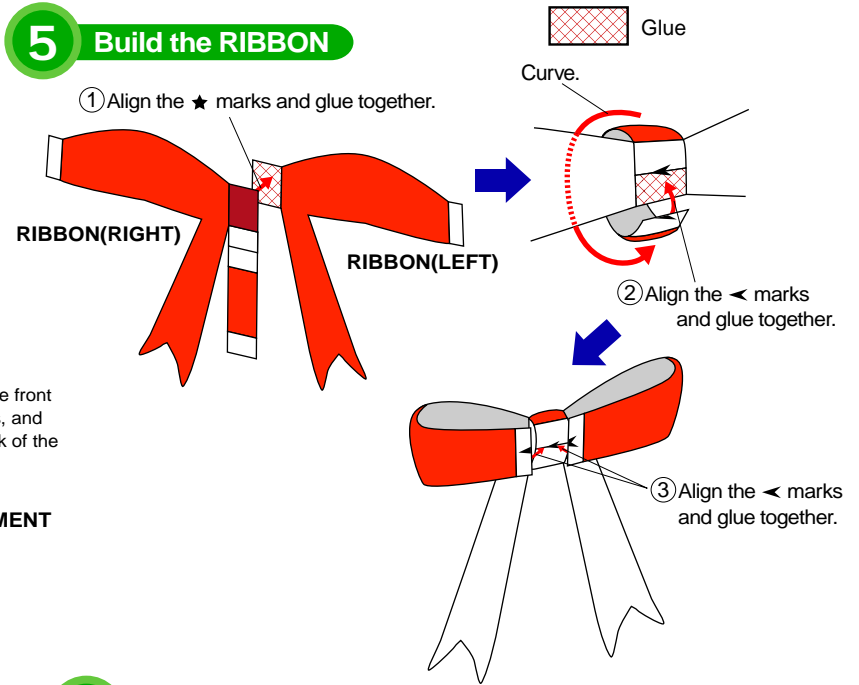
Align the matching marks and glue together.

Directions

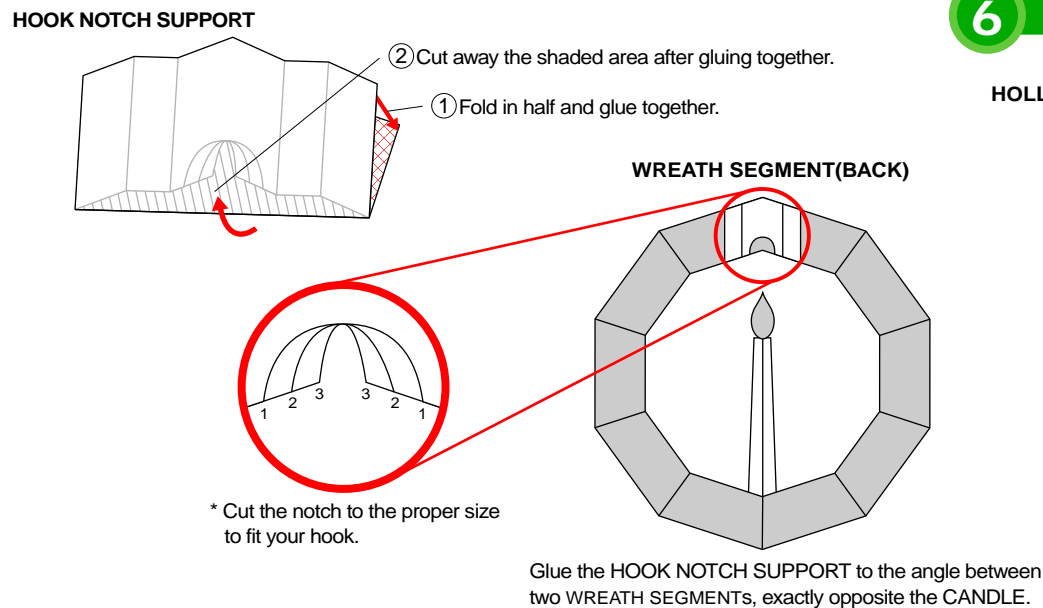
3 Build the CANDLE



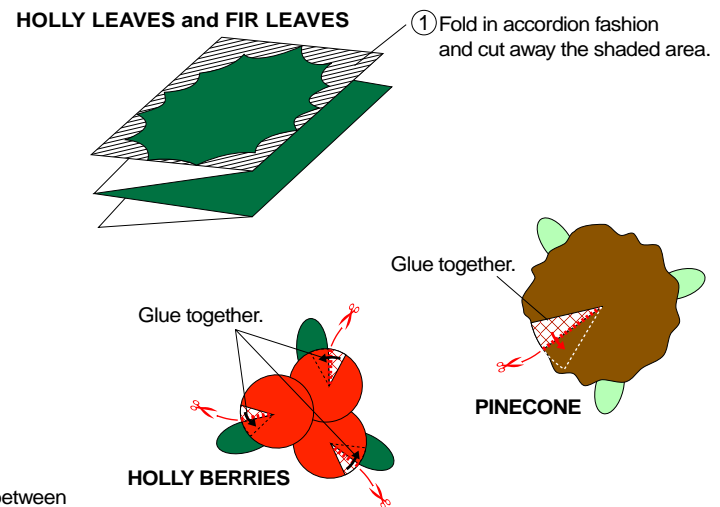
5 Build the RIBBON



4 Build the HOOK NOTCH SUPPORT



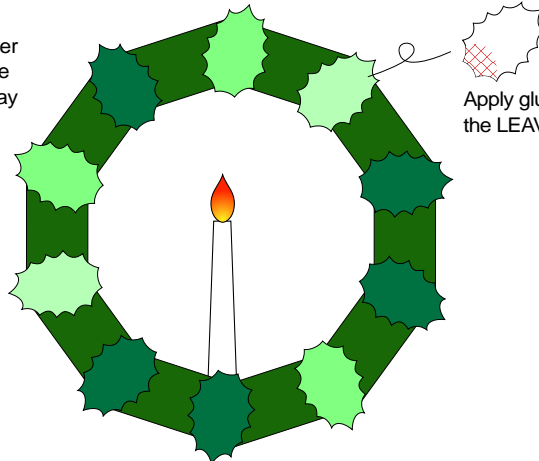
6 Build the LEAVES, HOLLY BERRIES, and PINECONES



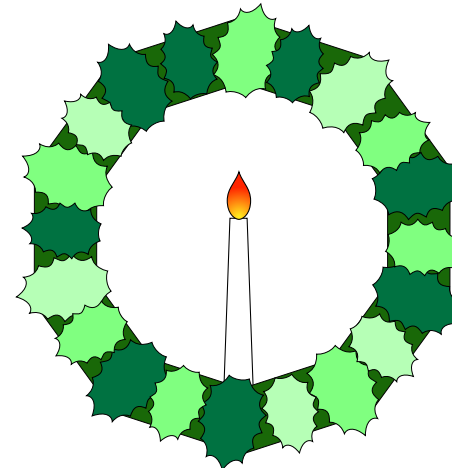
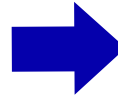
Directions

Put it all together **7**

*The illustrations and instructions on this section show one way to put together the wreath. You can arrange the various pieces in any way you like, to create your own original design.



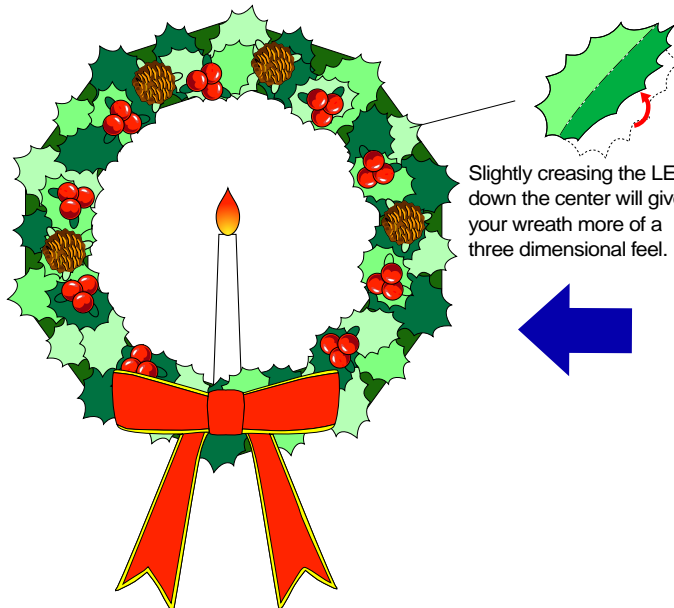
Apply glue to the stem side of the LEAVES (reverse side).



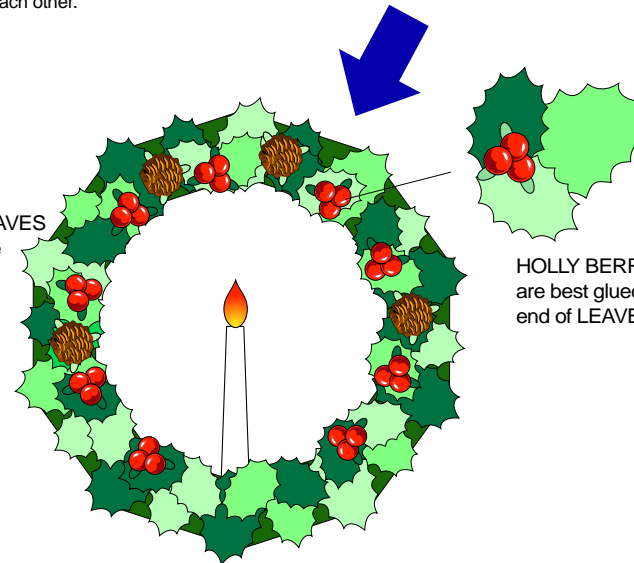
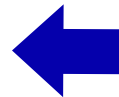
① Glue LEAVES (LARGE) to the joints between WREATH SEGMENT.

② Glue LEAVES (MEDIUM) in between the LEAVES (LARGE).

* Try arranging the LEAVES so that the same colors aren't next to each other. This will help make the design more interesting.



Slightly creasing the LEAVES down the center will give your wreath more of a three dimensional feel.



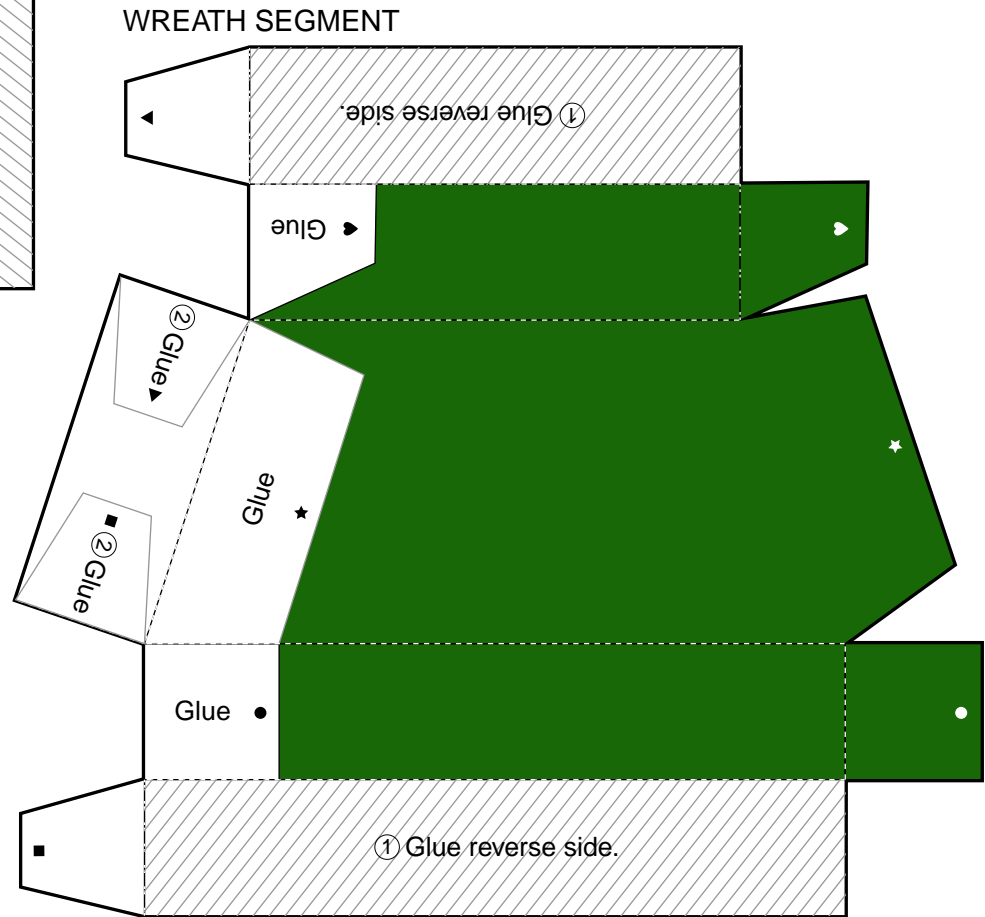
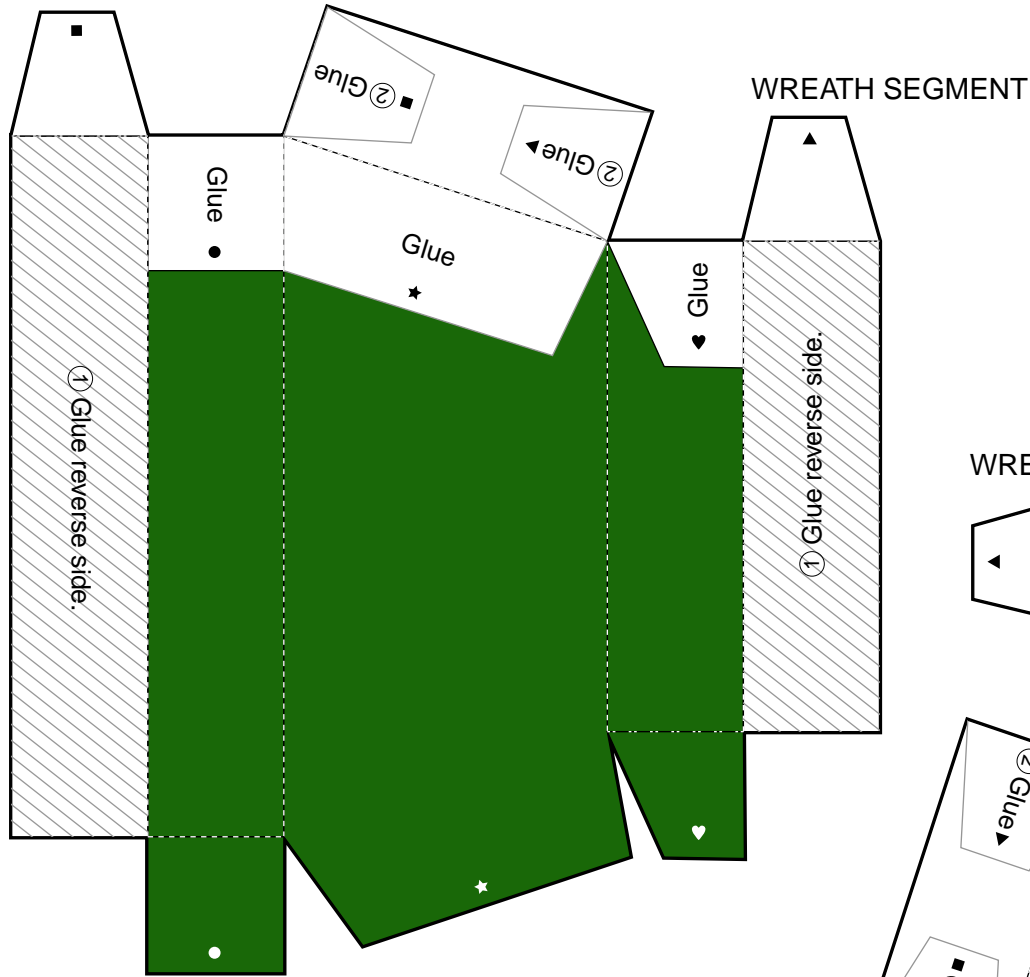
HOLLY BERRIES and PINECONES are best glued near the stem end of LEAVES.

③ Glue the remaining LEAVES, HOLLY BERRIES, and PINECONES anywhere you like.

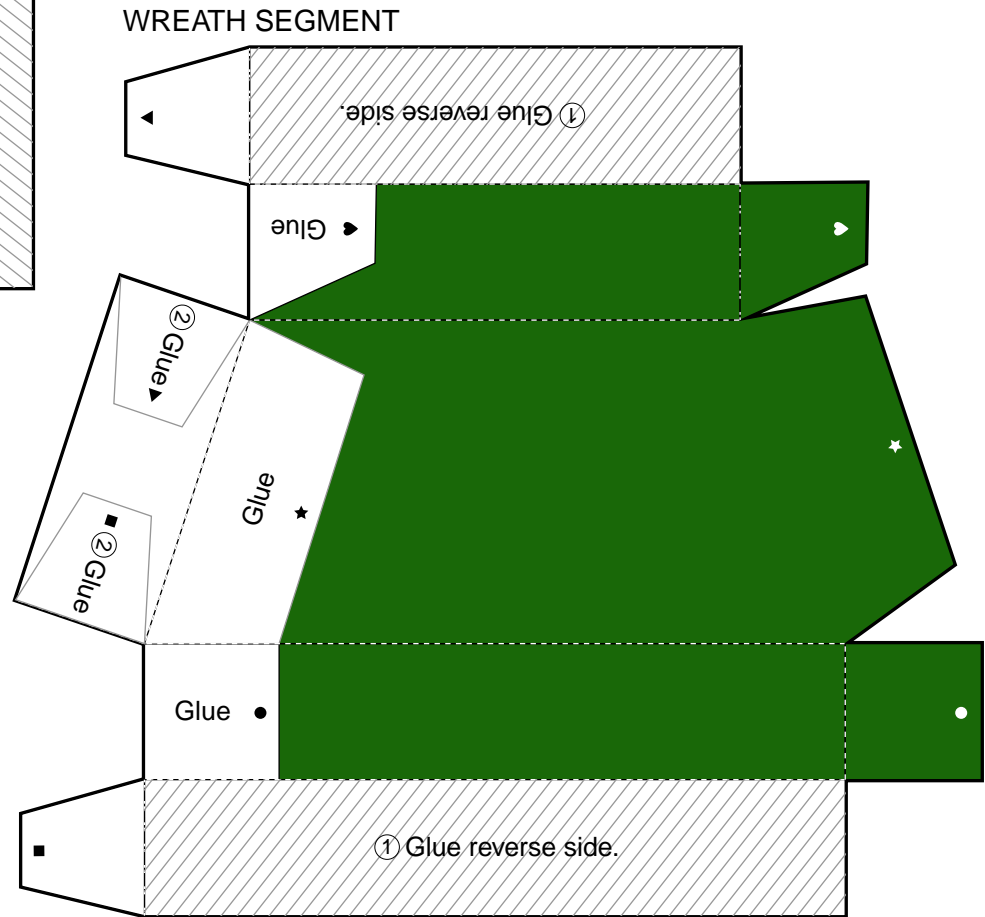
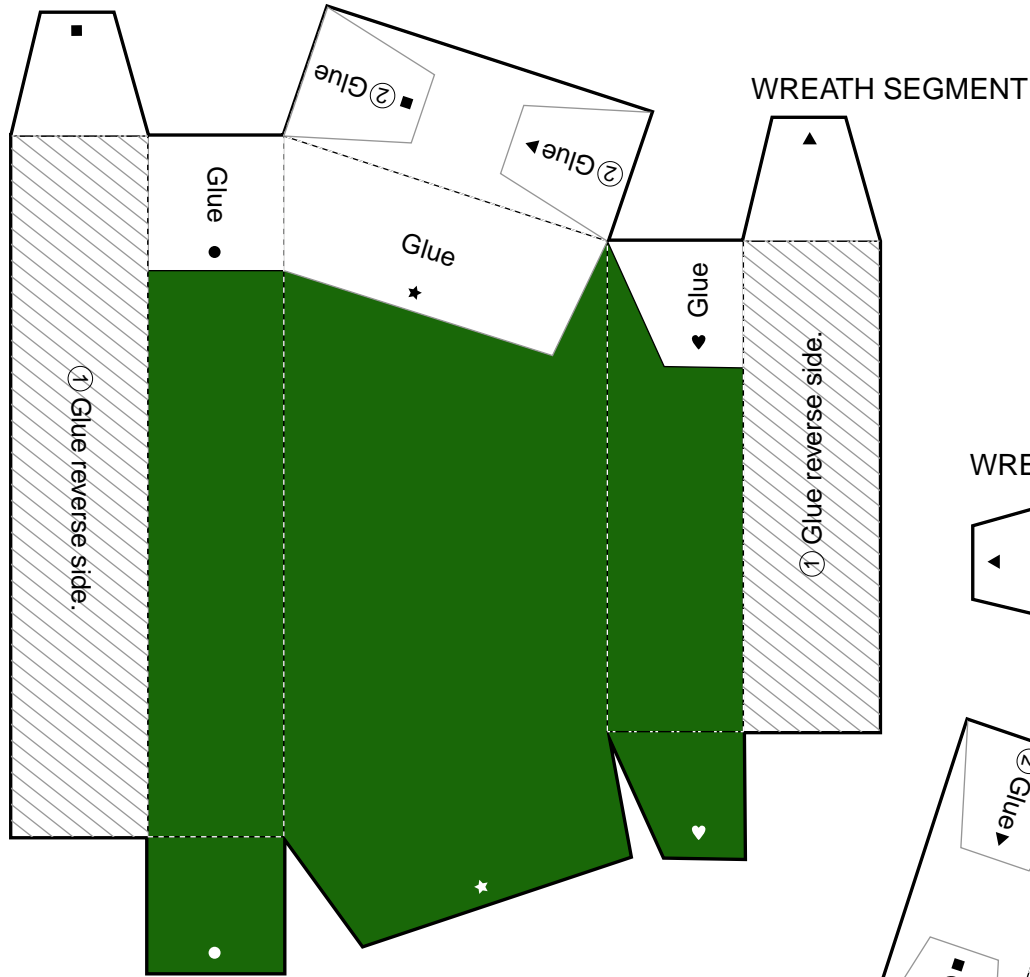
④ Glue the RIBBON to your wreath to complete the project.

*You don't need to use all the LEAVES, BERRIES, and PINECONES if you don't want to.

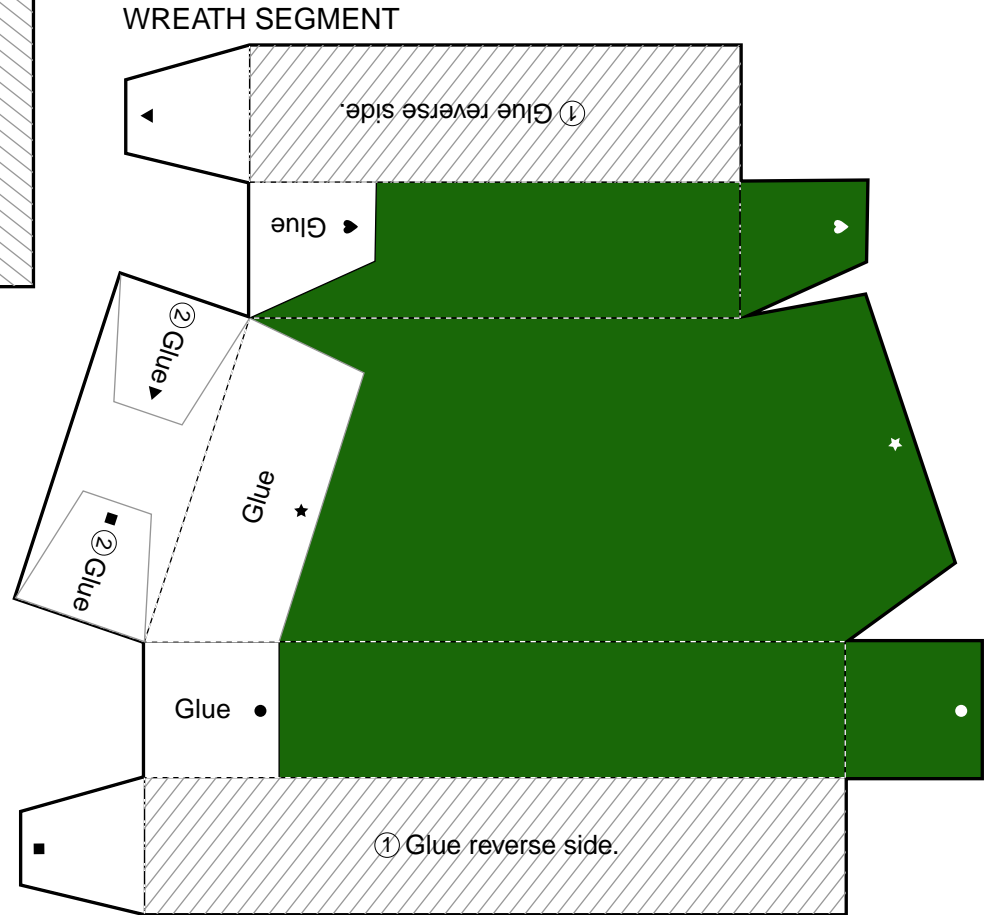
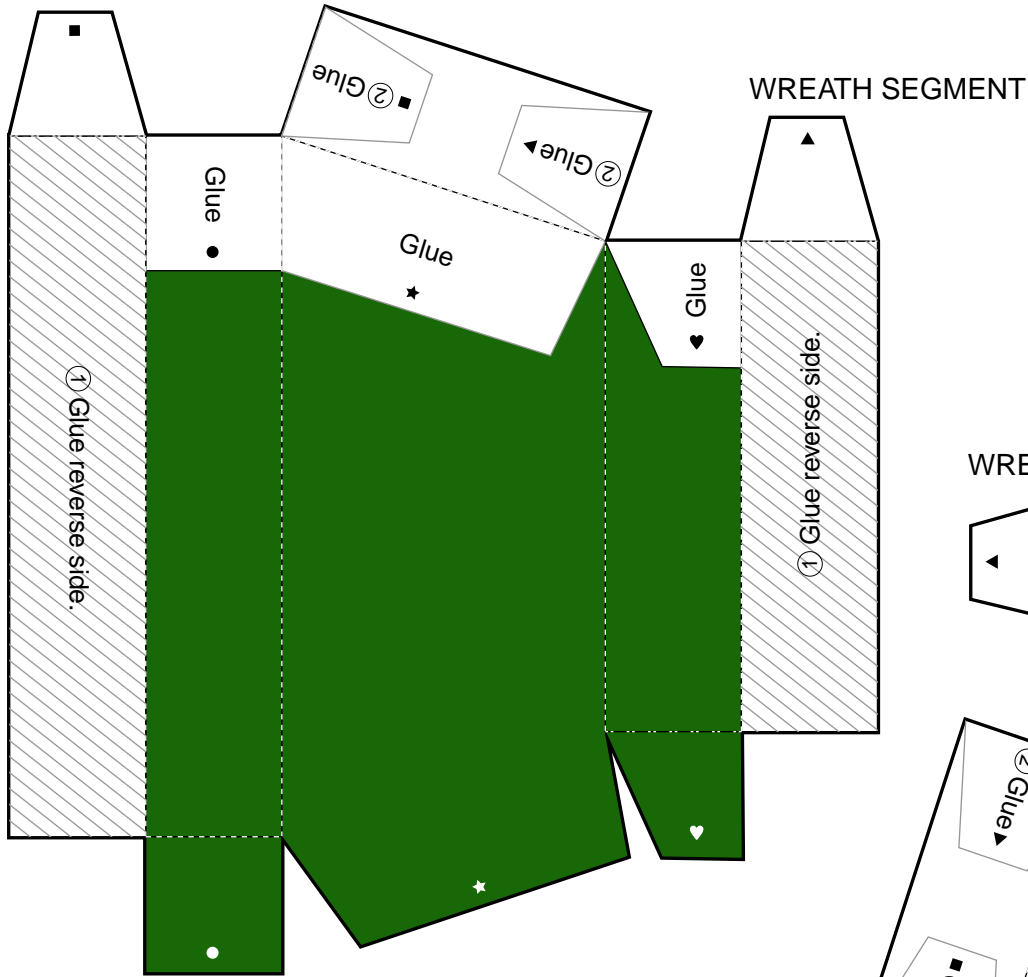
- Cut line
- - - Mountain fold
- · - · - Valley fold



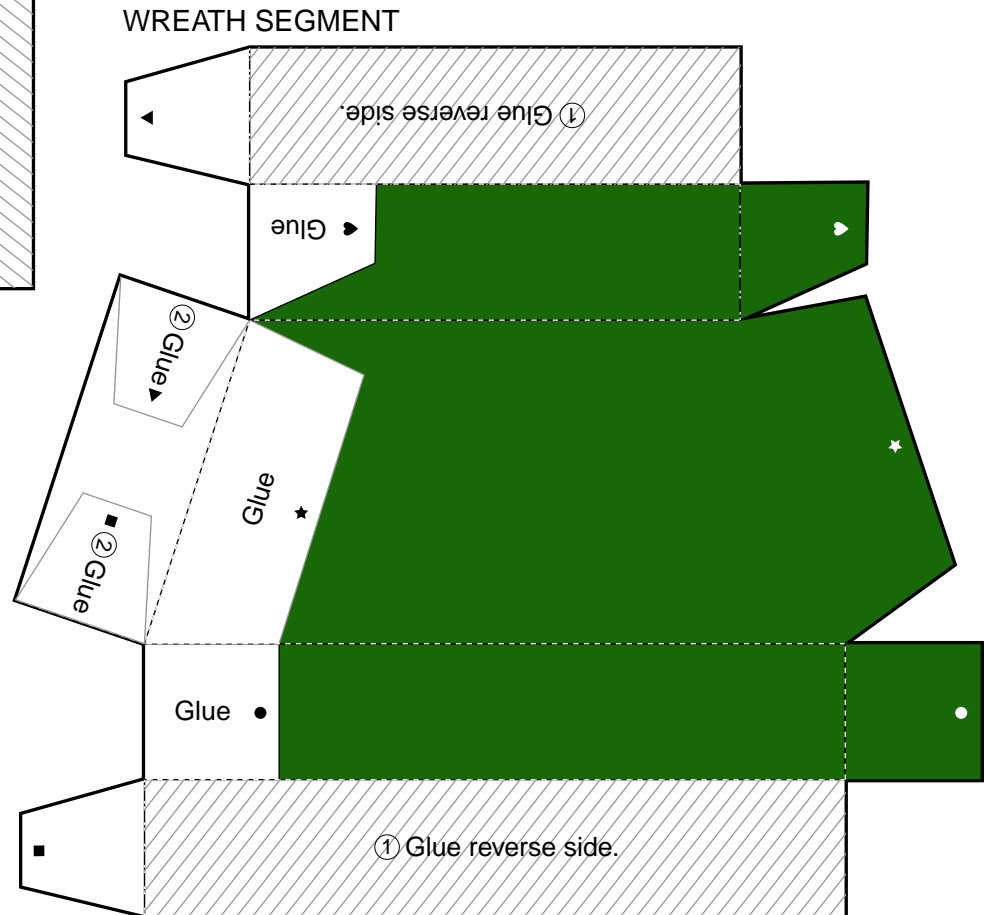
- Cut line
- - - Mountain fold
- · - · - Valley fold



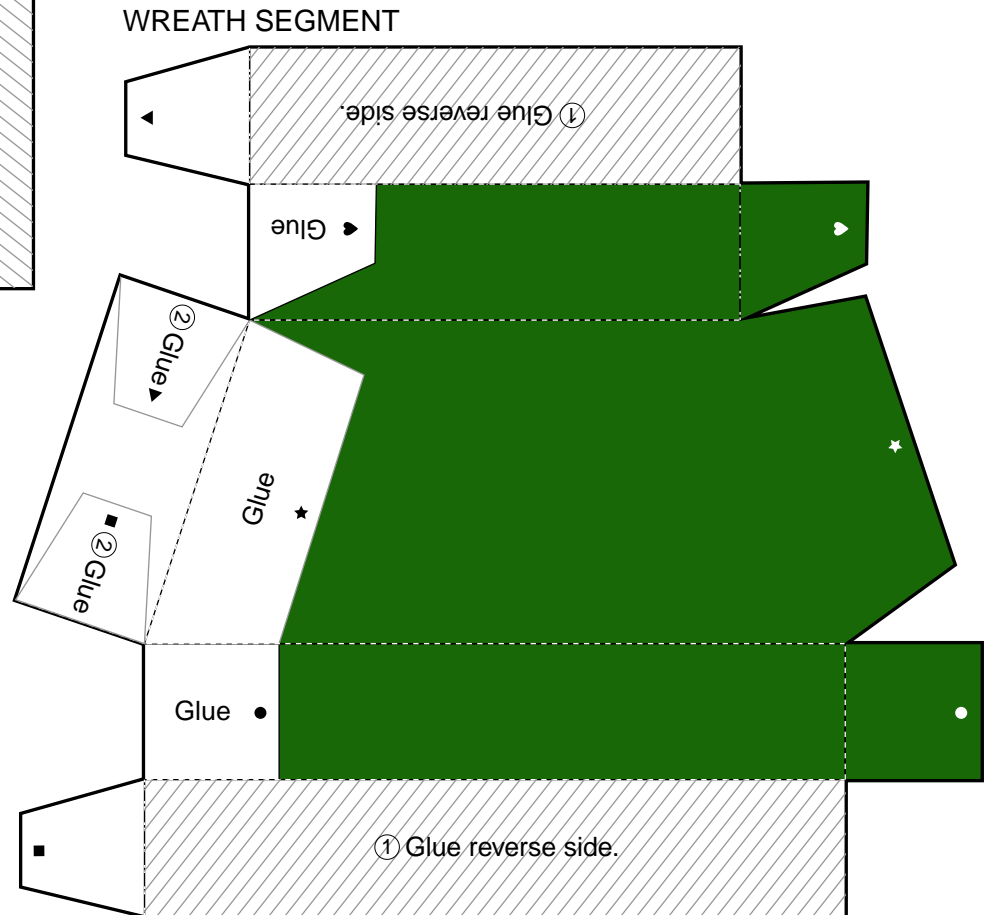
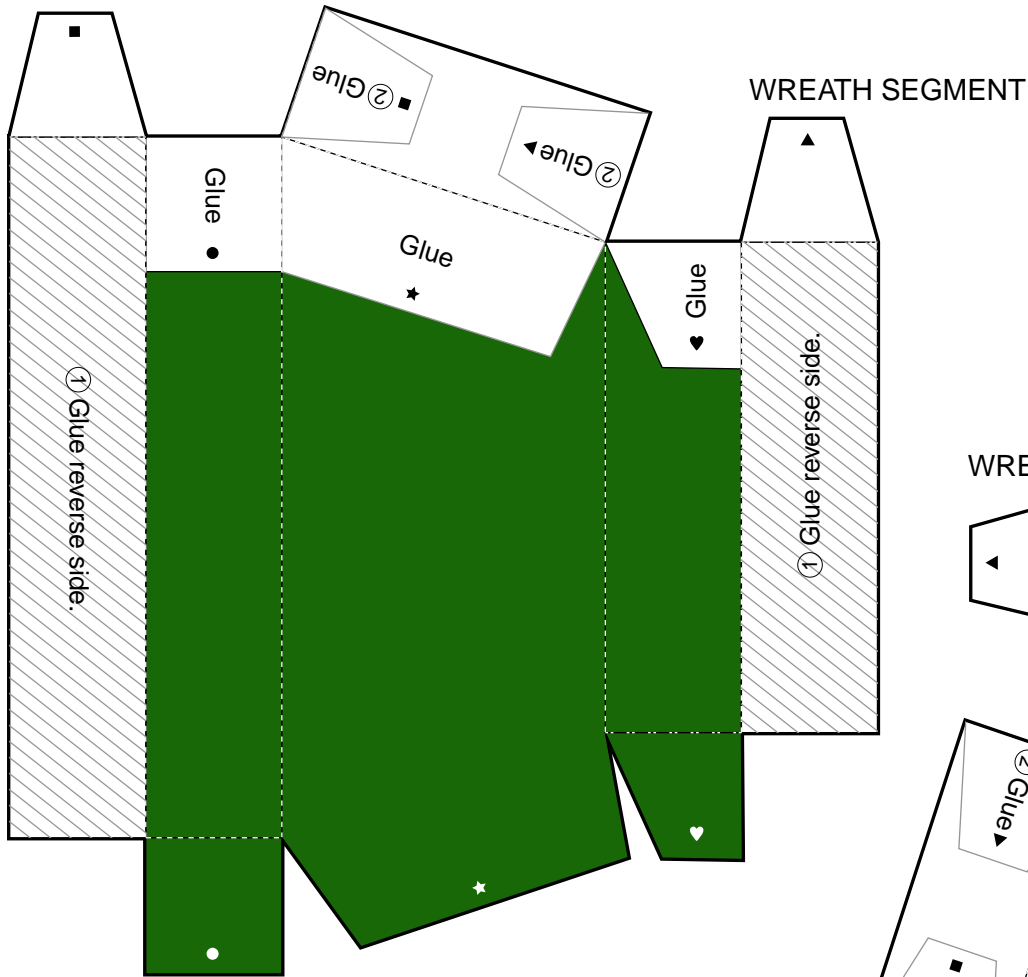
- Cut line
- - - Mountain fold
- · - · - Valley fold

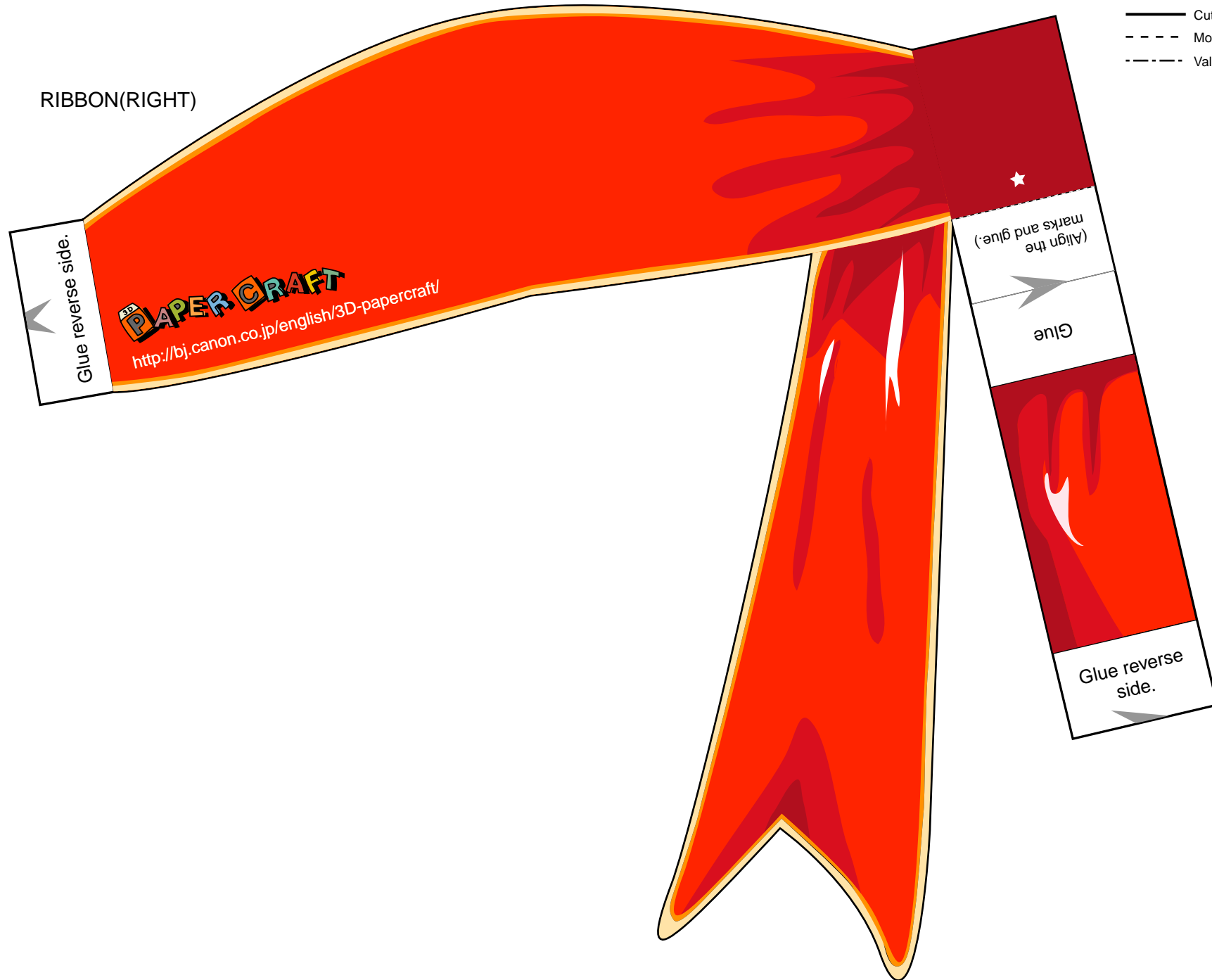


- Cut line
- - - Mountain fold
- · - · - Valley fold



- Cut line
- - - Mountain fold
- · - · - Valley fold





RIBBON(RIGHT)

Glue reverse side.

PAPER CRAFT
<http://bj.canon.co.jp/english/3D-papercraft/>

(Align the marks and glue.)



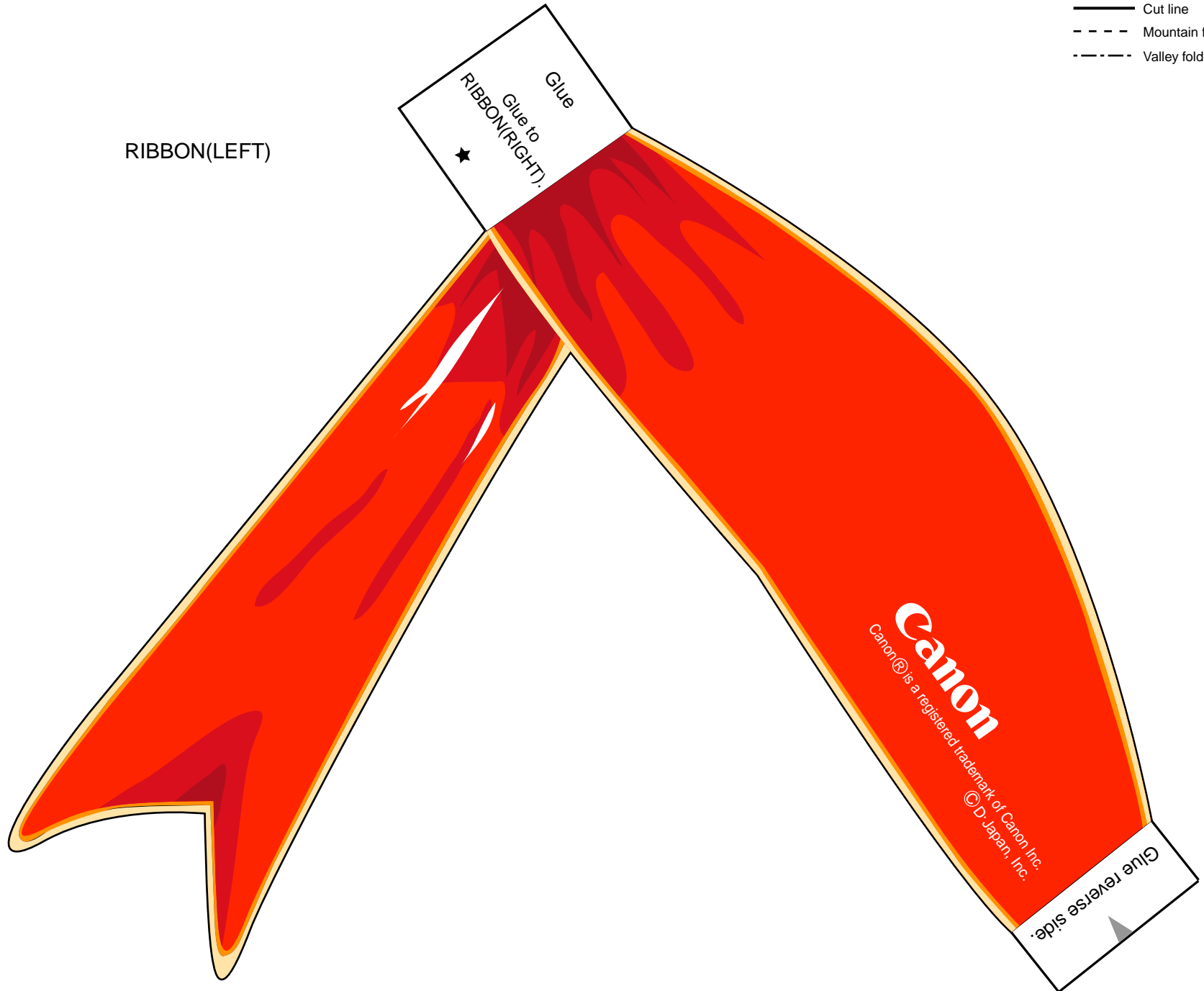
Glue

Glue reverse side.

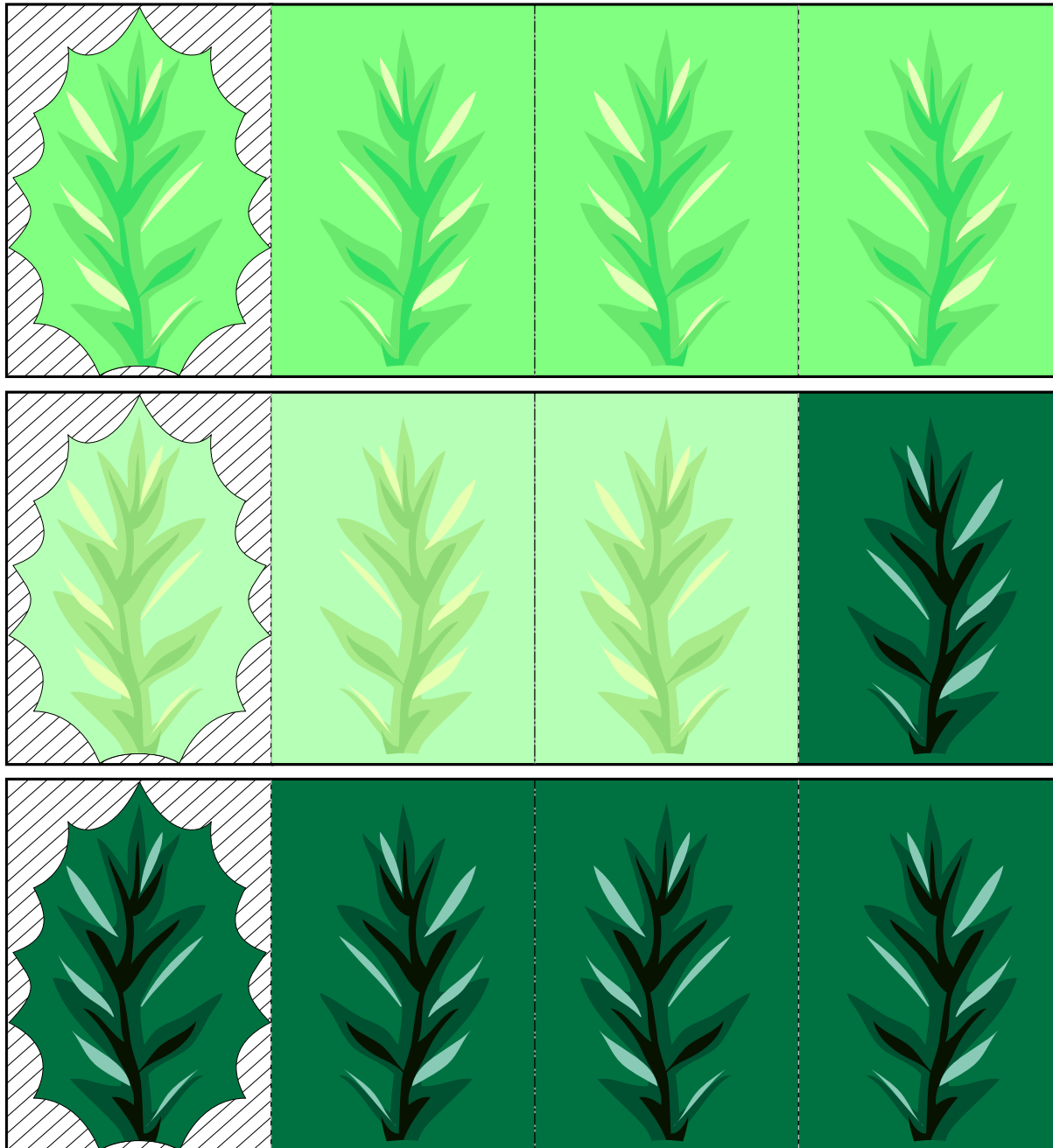
- Cut line
- - - Mountain fold
- · - Valley fold

- Cut line
- - - Mountain fold
- · - · - Valley fold

RIBBON(LEFT)

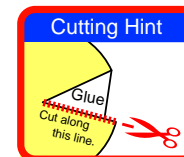
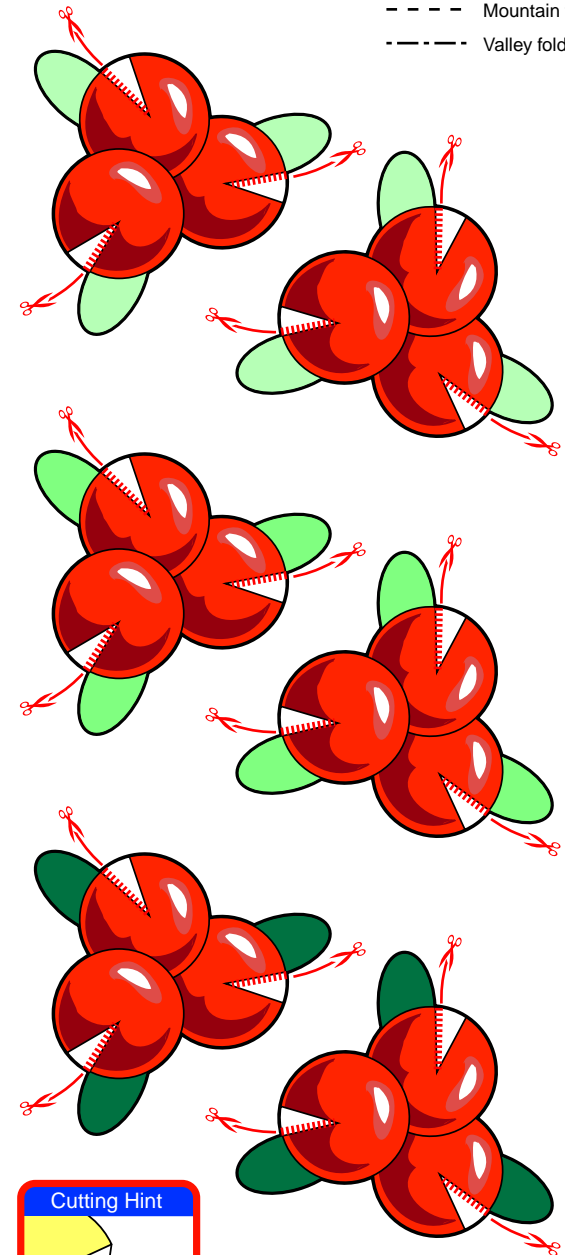


HOLLY LEAVES (SMALL)

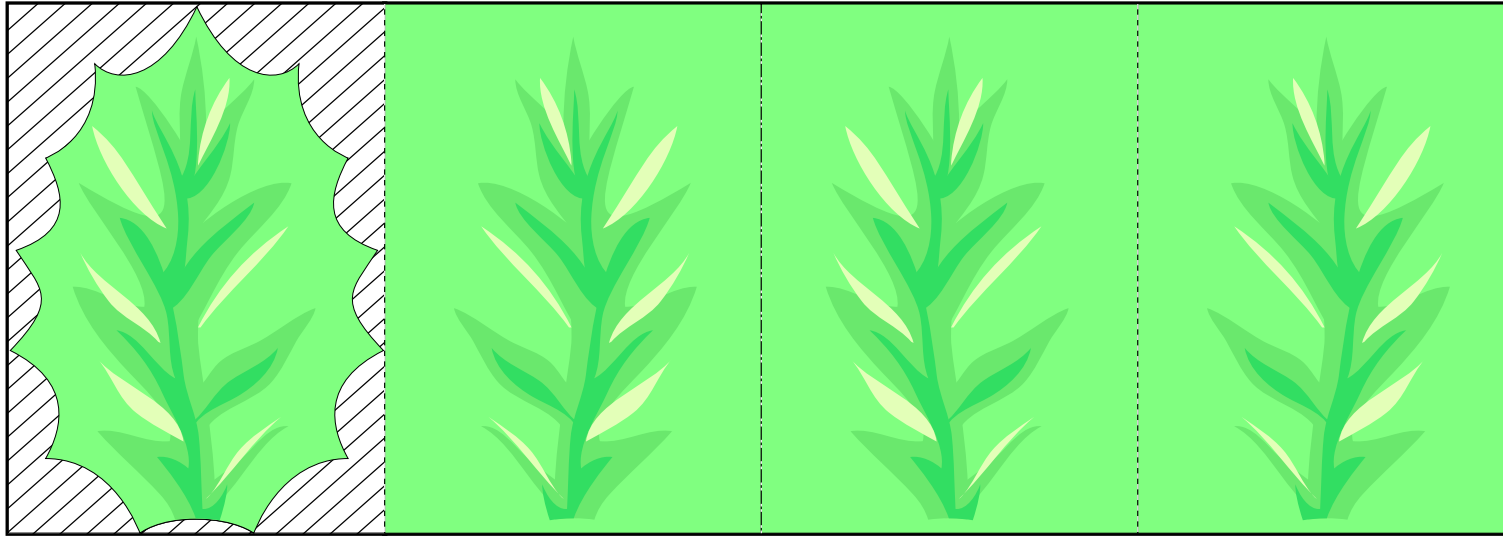


HOLLY BERRIES

- Cut line
- - - Mountain fold
- - - Valley fold

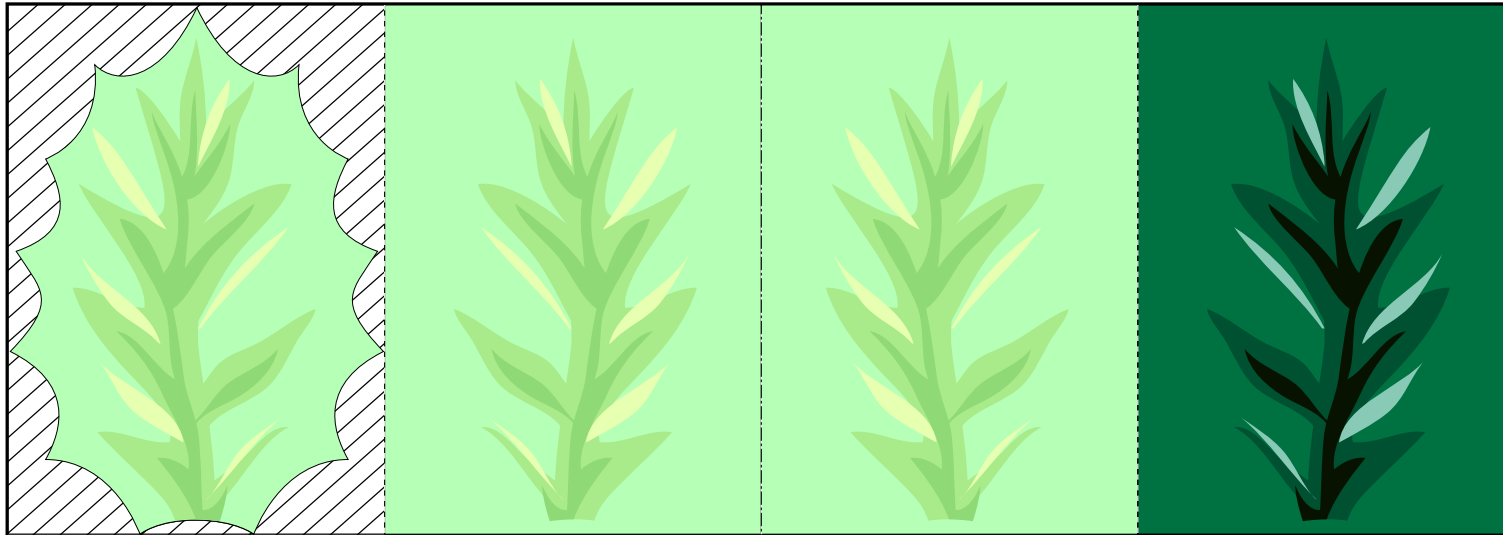


HOLLY LEAVES (MEDIUM)

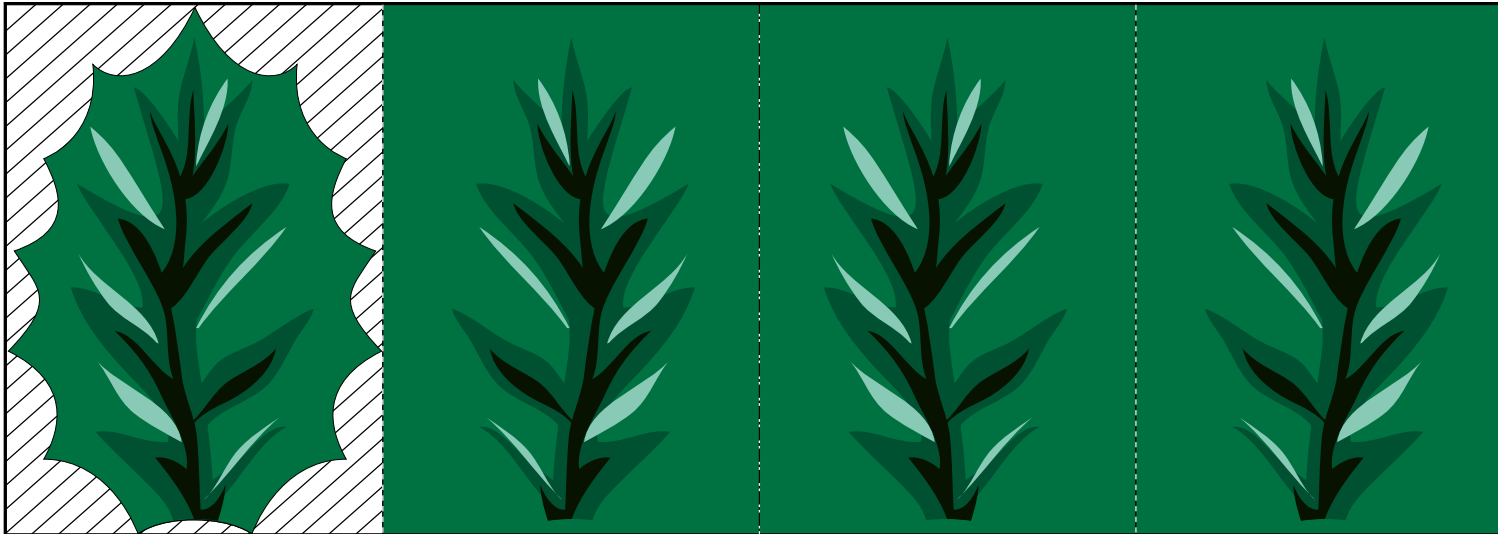


- Cut line
- - - Mountain fold
- · - Valley fold

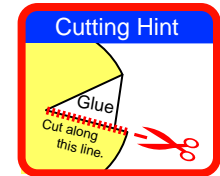
HOLLY LEAVES (MEDIUM)



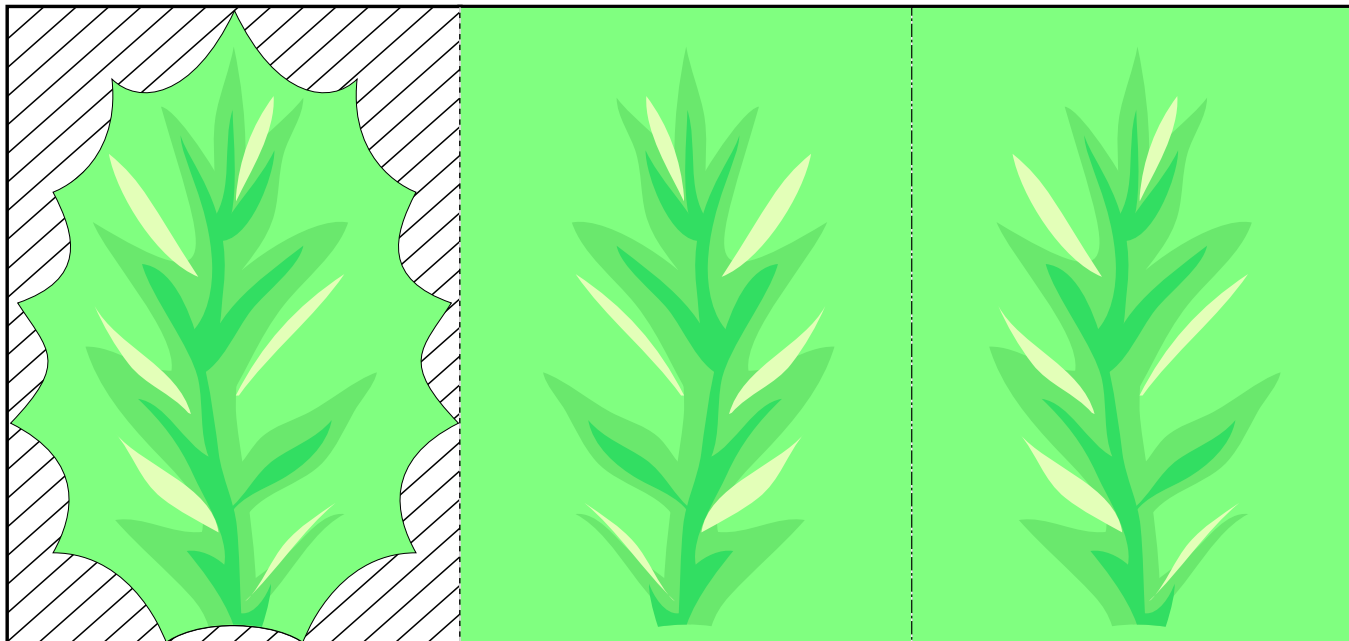
HOLLY LEAVES (MEDIUM)



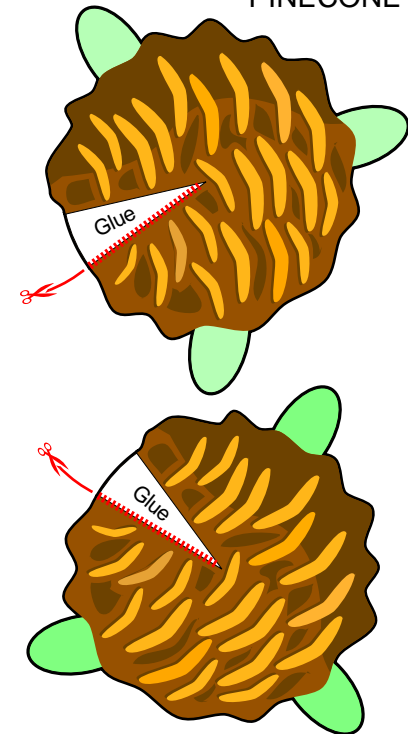
- Cut line
- - - Mountain fold
- - - Valley fold



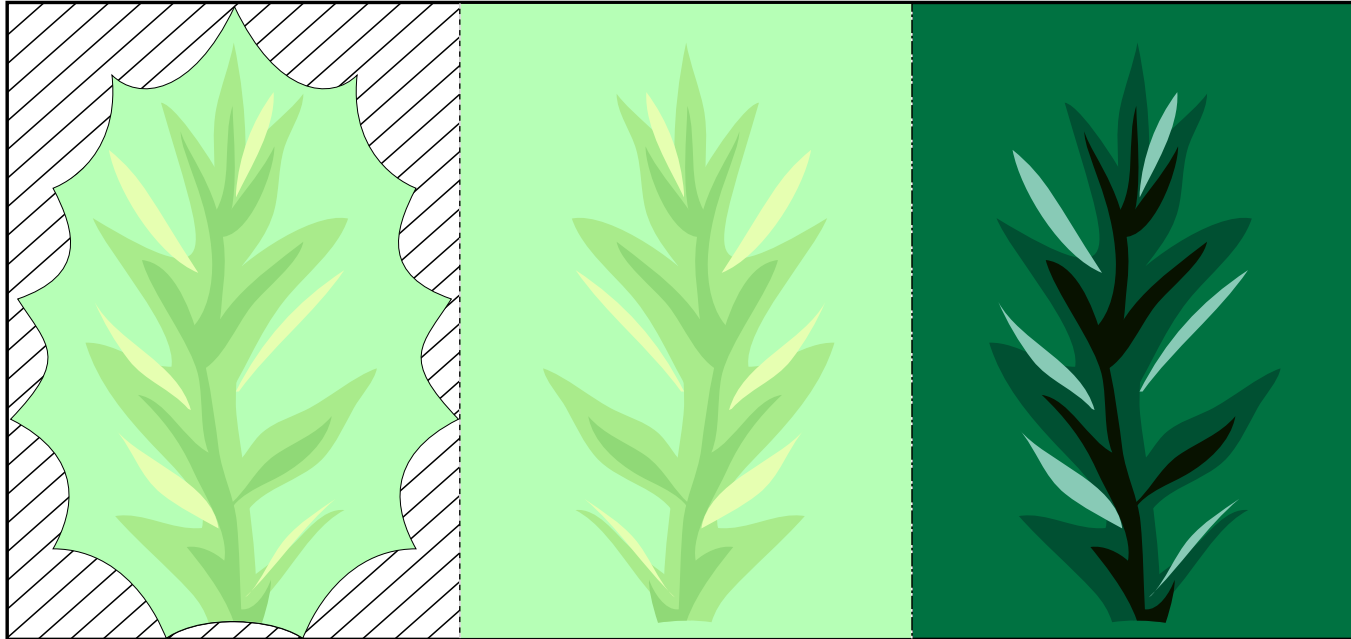
HOLLY LEAVES (LARGE)



PINECONE

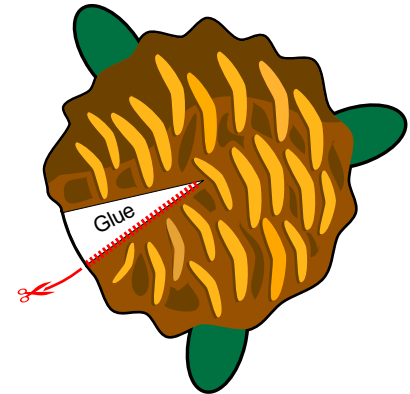


HOLLY LEAVES (LARGE)

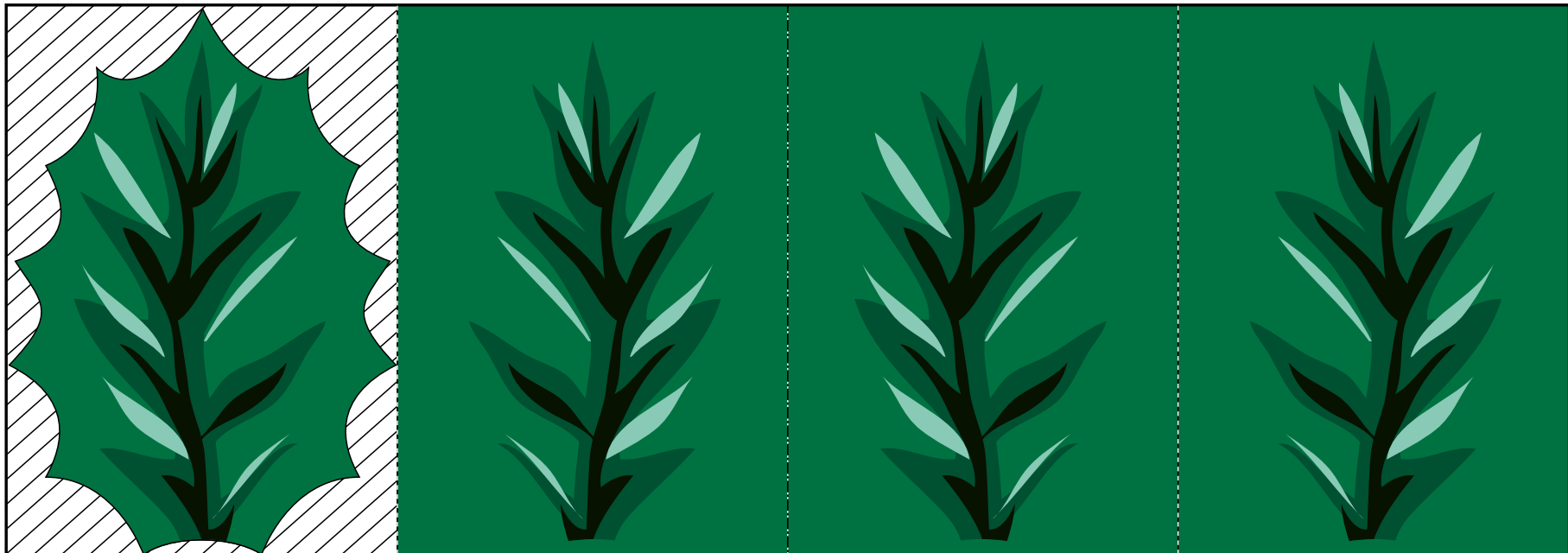


- Cut line
- - - Mountain fold
- - - Valley fold

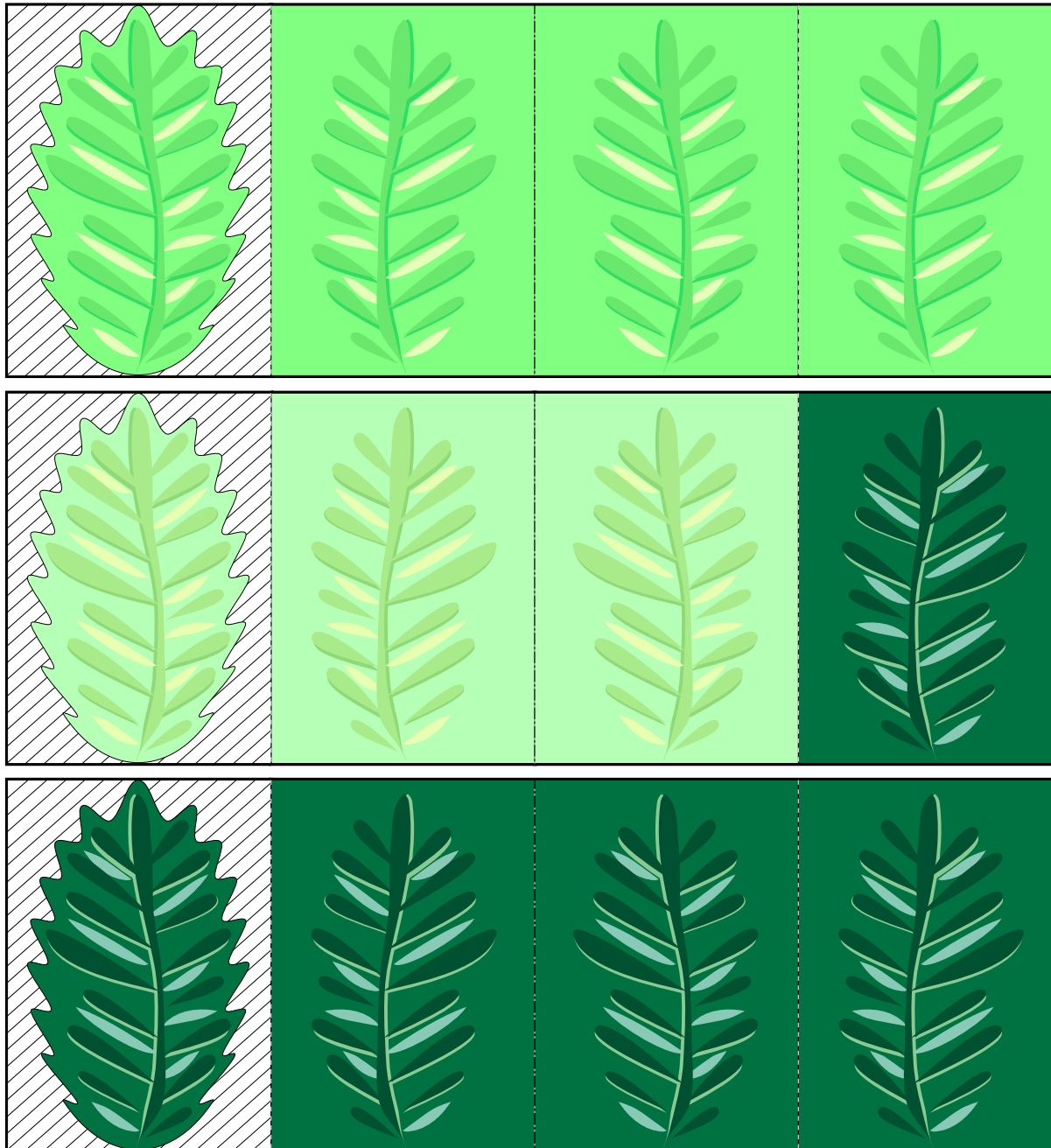
PINECONE



HOLLY LEAVES (LARGE)

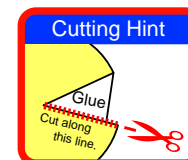
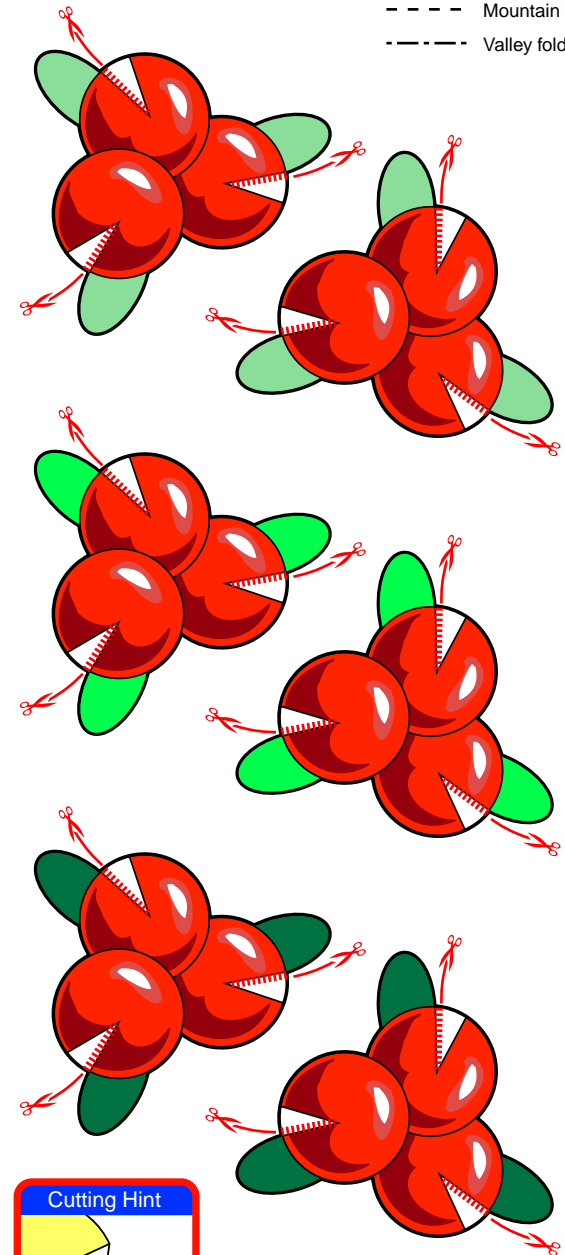


FIR LEAVES (SMALL)

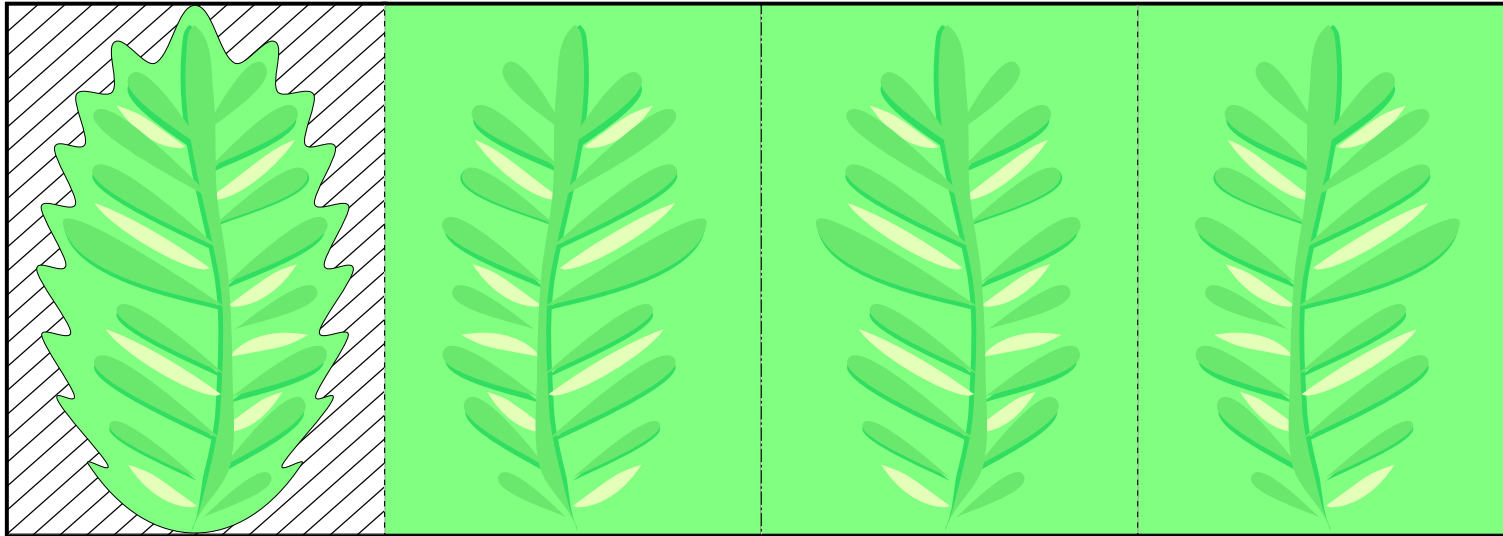


HOLLY BERRIES

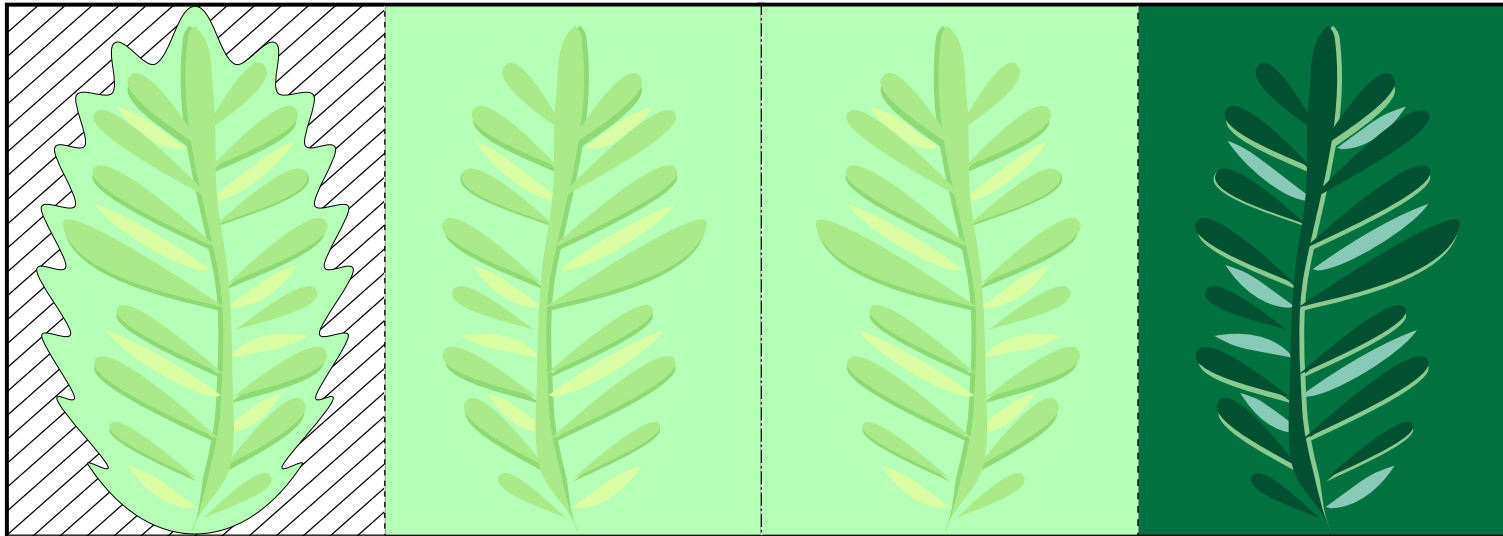
- Cut line
- - - Mountain fold
- - - Valley fold



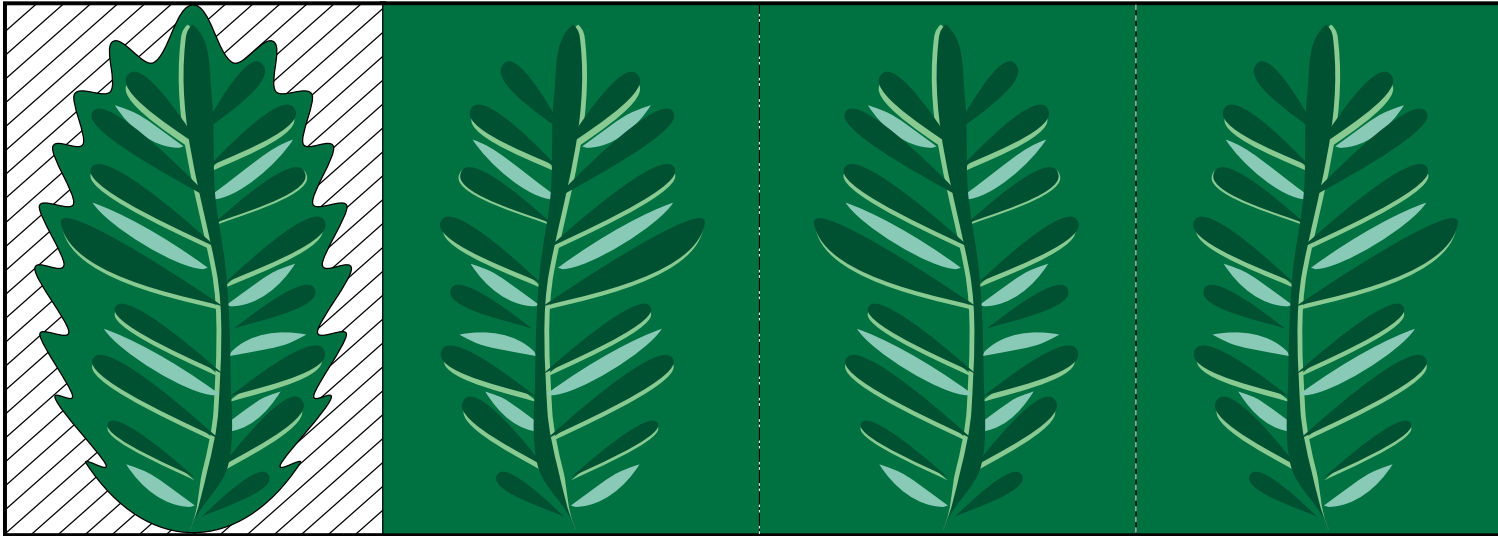
FIR LEAVES (MEDIUM)



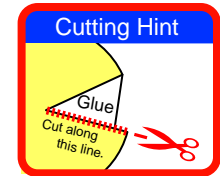
FIR LEAVES (MEDIUM)



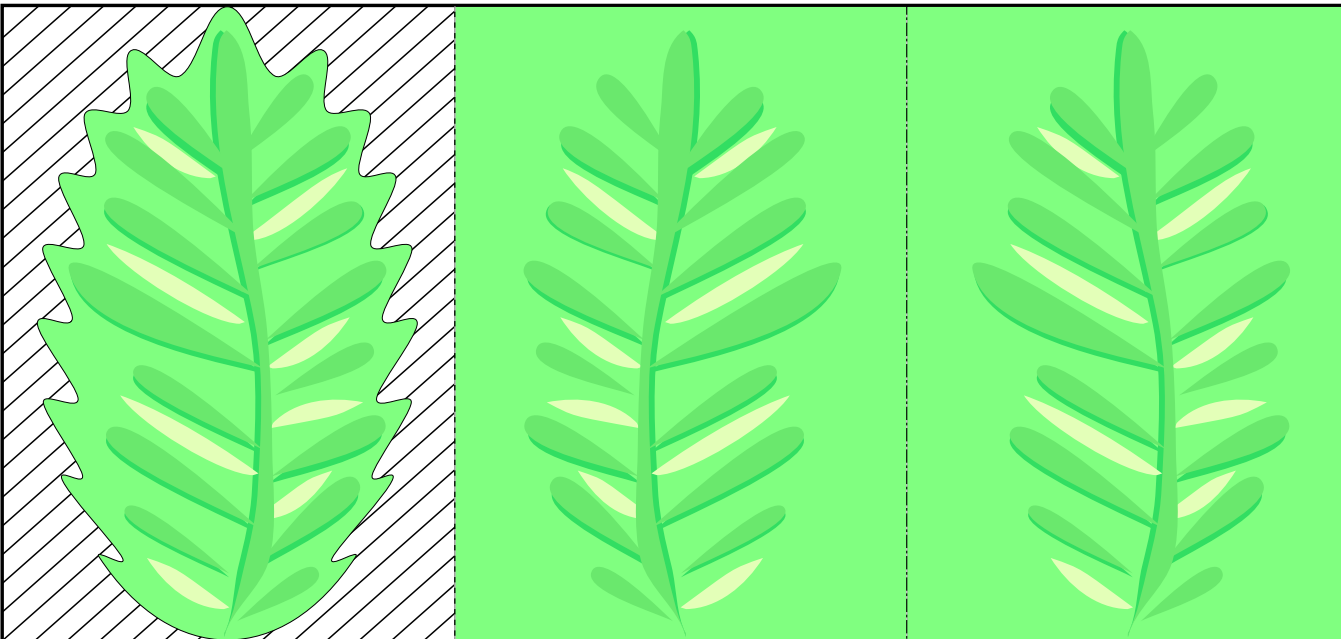
FIR LEAVES (MEDIUM)



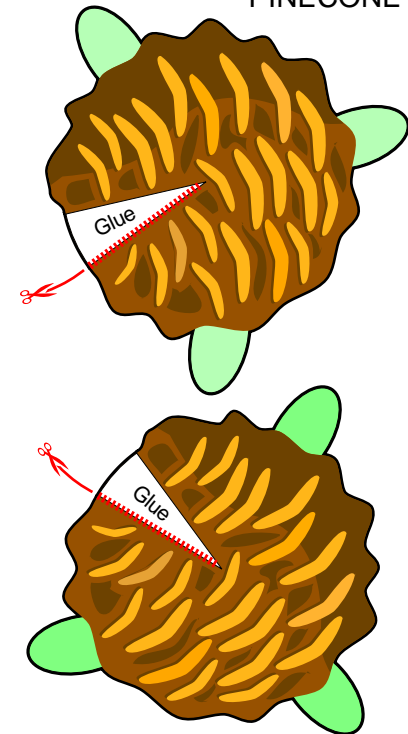
- Cut line
- - - Mountain fold
- · - · - Valley fold



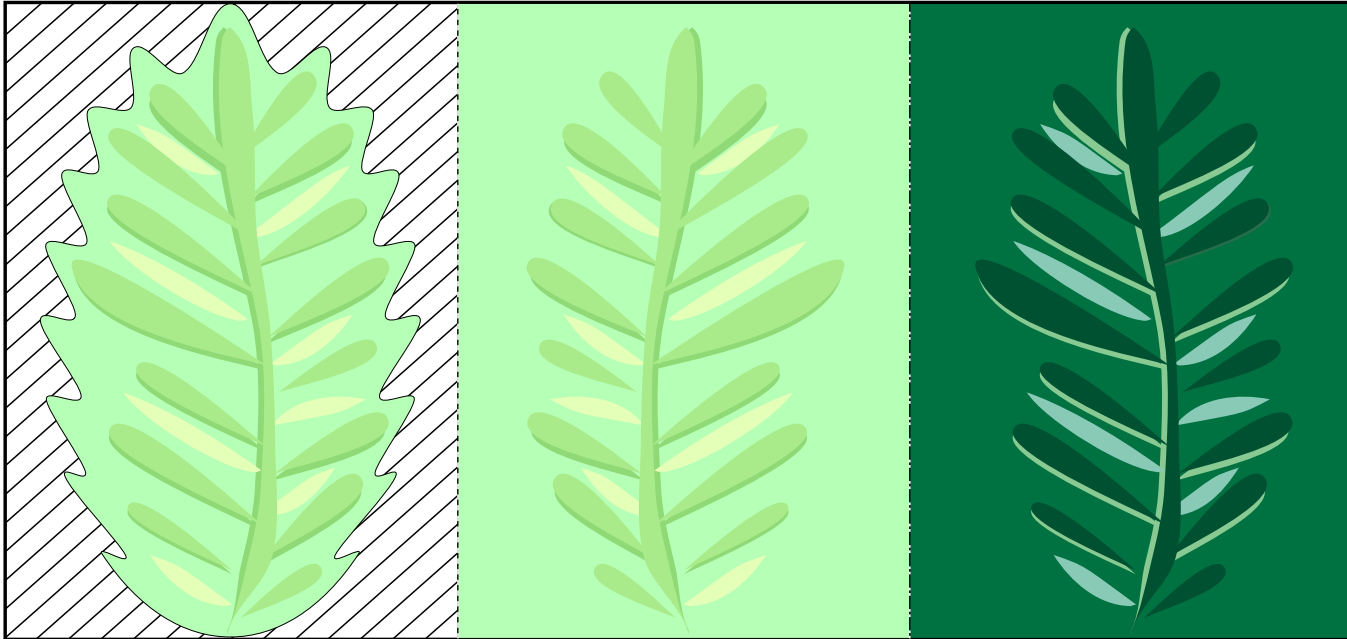
FIR LEAVES (LARGE)



PINECONE

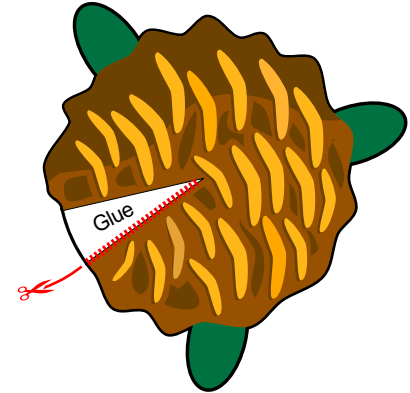


FIR LEAVES (LARGE)

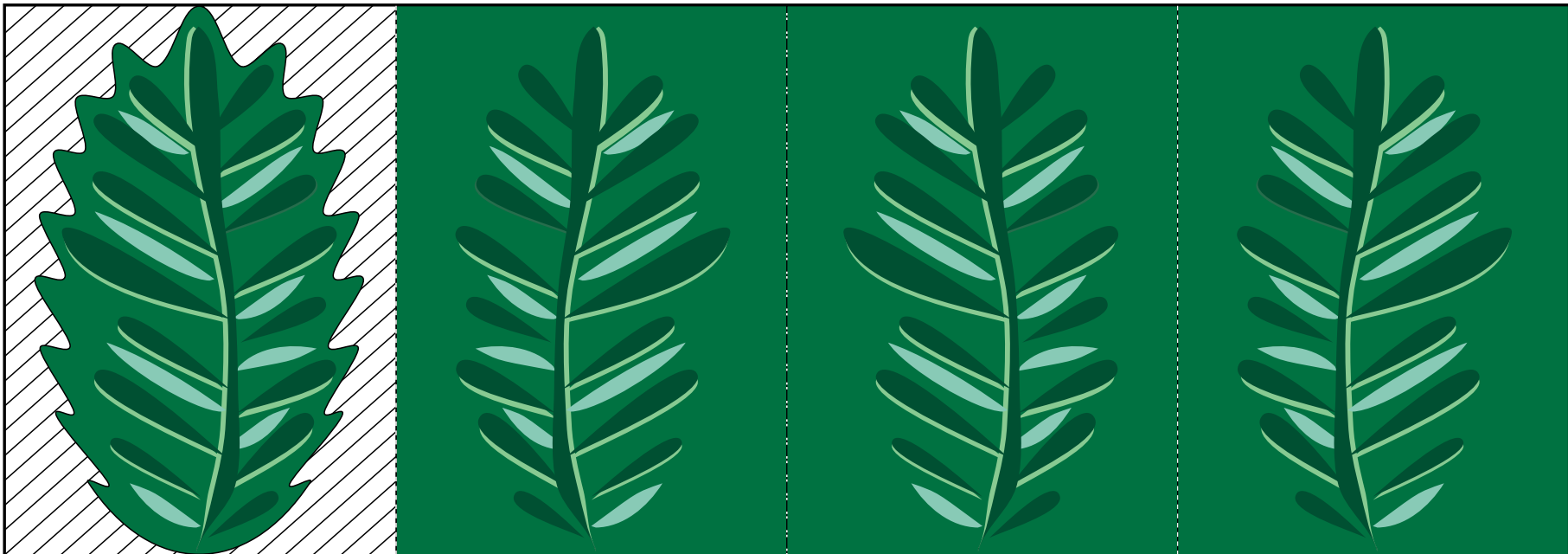


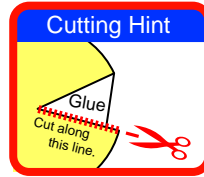
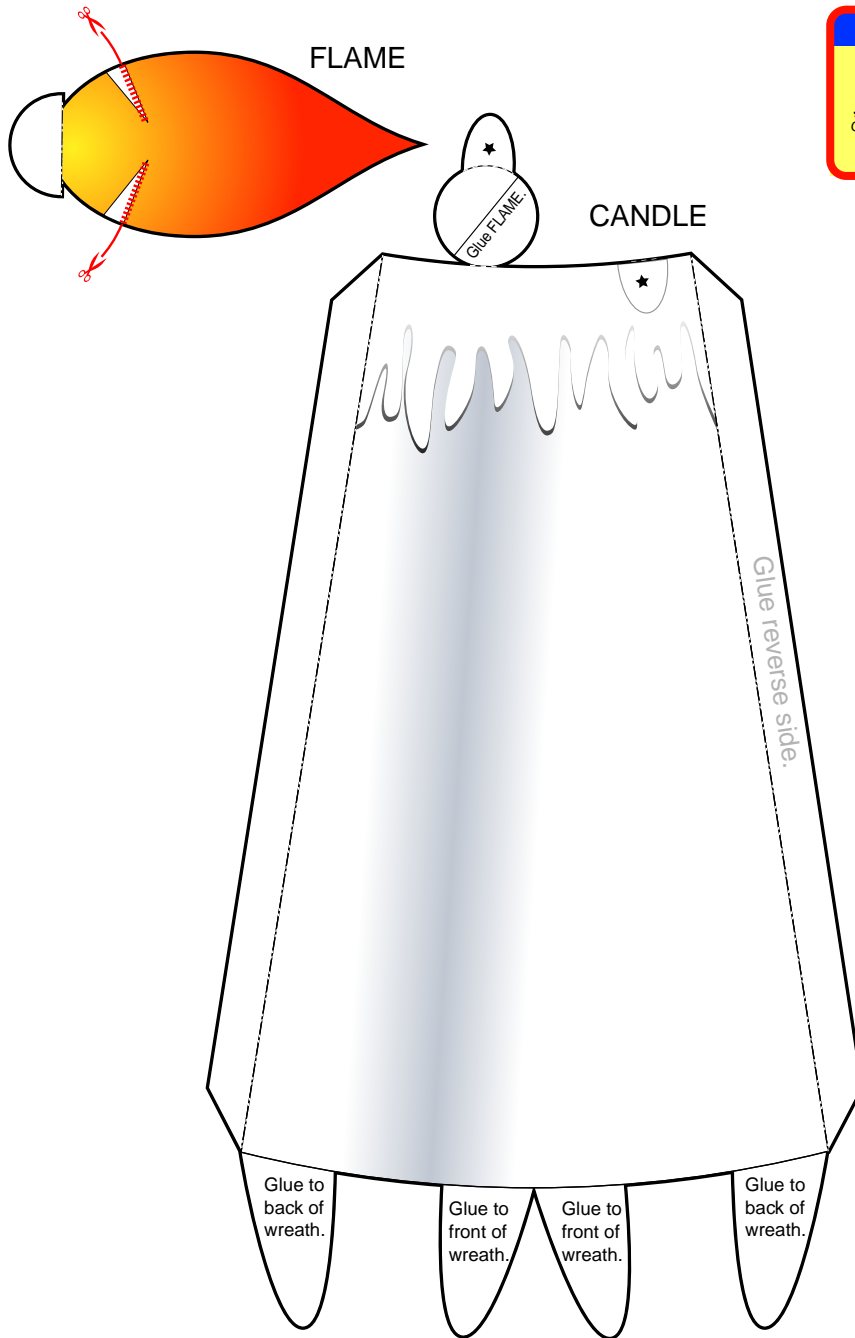
- Cut line
- - - Mountain fold
- - - Valley fold

PINECONE



FIR LEAVES (LARGE)





- Cut line
- - - Mountain fold
- - - Valley fold

