

# Canon Pop-up Card (Chocolate-cake) : Assembly Instructions

Canon® is a registered trademark of Canon Inc. © HIROKO



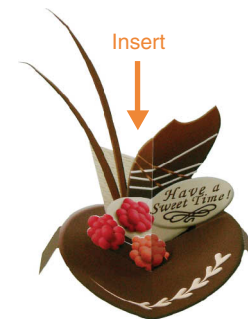
<http://www.canon.com/c-park/en/>



**1** Cut out the parts and crease them along the fold lines indicated.



**2** Insert the flaps of the decorations into the cutaways in the stand and paste them on the back.



**Assembly Instructions**

..... <b>Mountain fold</b> (dotted line) *Make a mountain fold.	———— <b>Scissors line</b> (solid line) *Cut along the line.
- · - · - <b>Valley fold</b> (dashed and dotted line) *Make a valley fold.	———— <b>Cut in line</b> (solid line) *Make a cut.

✂ **You will need** ✂

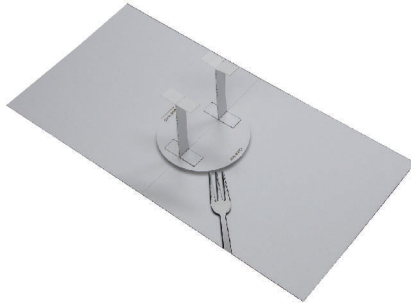
scissors, paste, cutter, a used ballpoint pen (tracing along the fold lines makes them easier to fold)

**Caution:** Glue, scissors, cutter and other tools may be dangerous to young children so be sure to keep them out of the reach of young children.

# Canon Pop-up Card (Chocolate-cake) : Assembly Instructions

Canon® is a registered trademark of Canon Inc. © HIROKO

- 3** Fold the supports in the centre and paste the two sides together. Paste the flaps at one end onto the centre of the base.



- 4** Paste both ends of the side of the cake to form a band. Insert the flaps at the bottom of the side of the cake into the cutaways in the base and paste them on the back.



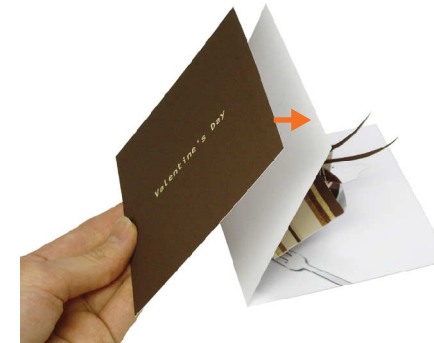
- 5** Paste the stand on to the supporters and paste the stand flaps to the inside of the side cake.



- 6** Finally, paste the cake onto the inside of the stand.



- 7** Paste the coloured front cover onto the back of the left hand side of the base.



- 8** Finally, paste the back cover onto the back of the right hand side of the base.

