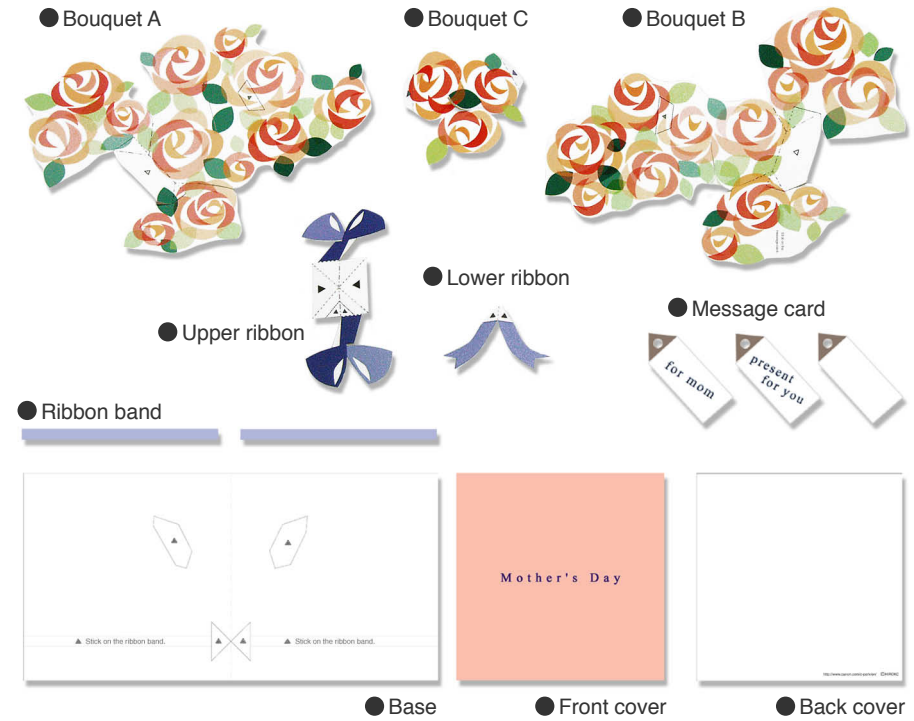


Canon Pop-up Card (Bouquet) : Assembly Instructions

Canon® is a registered trademark of Canon Inc. © HIROKO



1 Cut out the parts and crease them along the fold lines indicated. (If you make a strong crease, the parts will open out smoothly.)



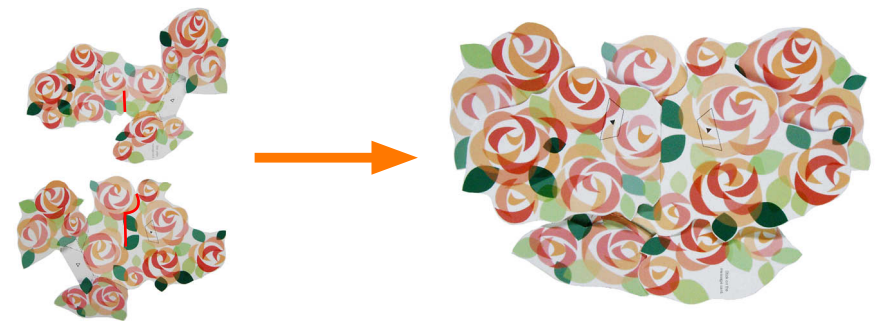
Assembly Instructions

<p>..... Mountain fold (dotted line) *Make a mountain fold.</p> <p>- · - · - Valley fold (dashed and dotted line) *Make a valley fold.</p>	<p>—— Scissors line (solid line) *Cut along the line.</p> <p>—— Cut in line (solid line) *Make a cut.</p>
--	---

You will need scissors, paste, a used ballpoint pen (tracing along the fold lines makes them easier to fold)

Caution: Glue, scissors, and other tools may be dangerous to young children so be sure to keep them out of the reach of young children.

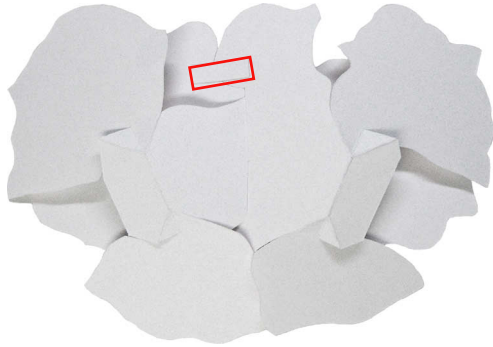
2 Match up the slits marked with the red lines and fit them together.



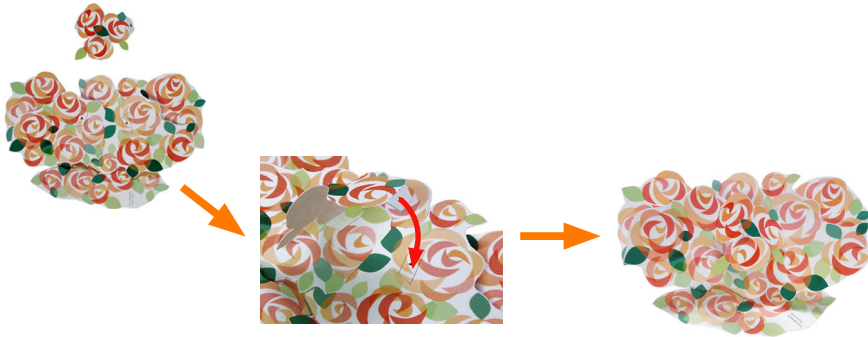
Canon Pop-up Card (Bouquet) : Assembly Instructions

Canon® is a registered trademark of Canon Inc. © HIROKO

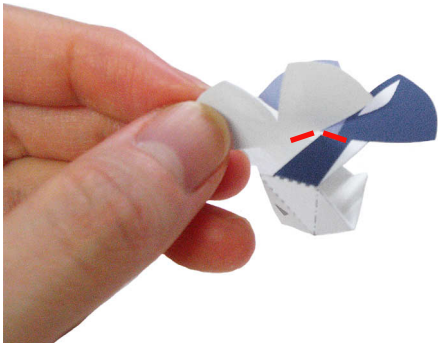
3 Stick tape on to the back of assembly in Step 2, in order to reinforce it.



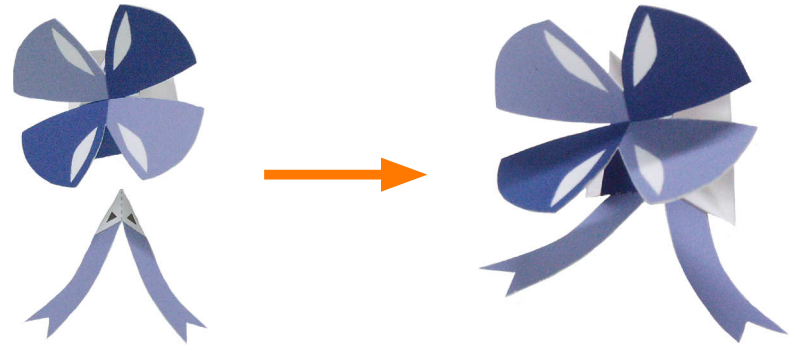
4 Glue the Bouquet C on to the glue spot of the assembly in Step 3.



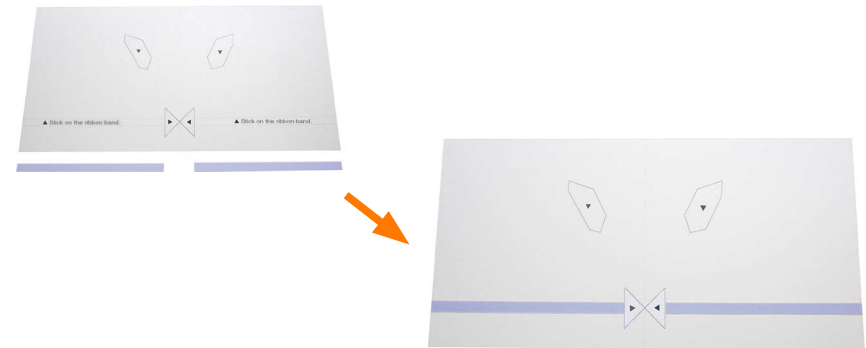
5 Fit into the slit marked in red on the ribbon.



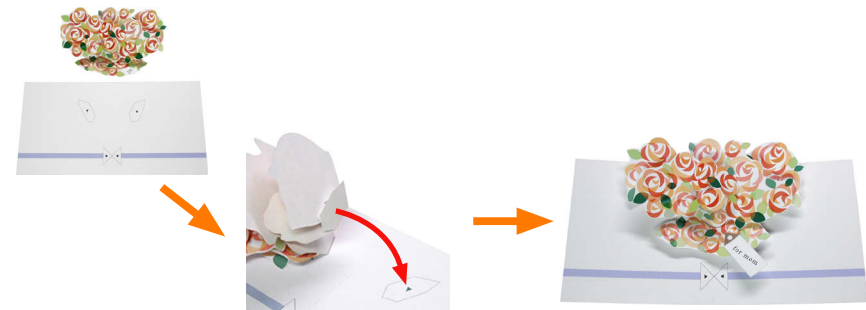
6 Fit the upper ribbon and lower ribbon together.



7 Glue the ribbon band onto the base card.



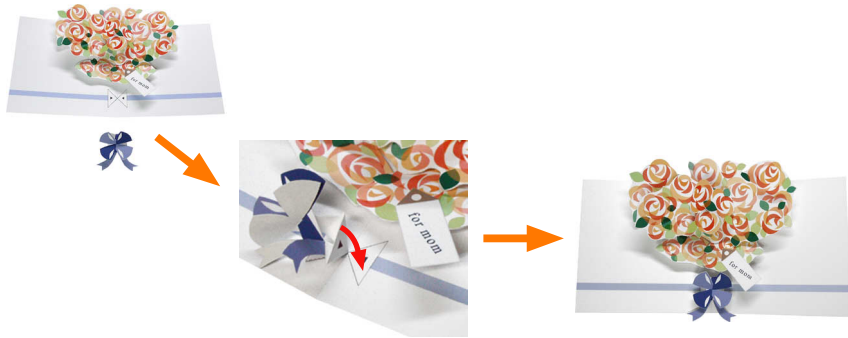
8 Line up the assembly from Step 4 on the base card and glue each side. Attach the message card to the bouquet.



Canon Pop-up Card (Bouquet) : Assembly Instructions

Canon® is a registered trademark of Canon Inc. © HIROKO

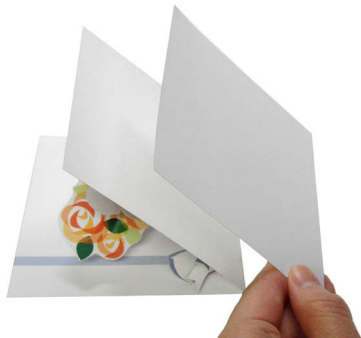
9 Line up the ribbon on the base card and glue each side.



10 Paste the coloured front cover onto the back of the left hand side of the base.



11 Paste the back cover onto the back of the right hand side of the base.



12 Complete!

