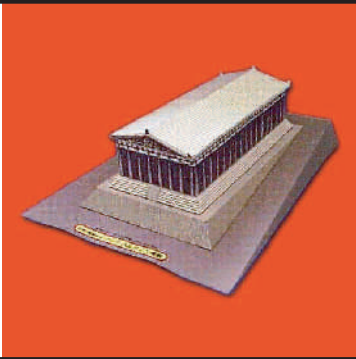


Canon World Papercraft Mini-book

Buildings of the World Series Greece The Parthenon

The Parthenon was built in the fifth century B.C. It was surrounded by 58 columns, and its pediments were decorated with magnificent relief sculpture. This temple was dedicated to Athena, the goddess of wisdom. A statue of Athena was located in the main hall, facing east so as to catch the rays of the morning sun, and giving the temple an air of majesty.

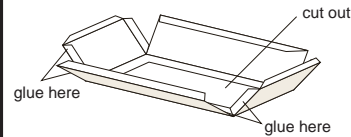


*Cut out the card above and save it. You can collect the cards from each of the Papercraft projects to make your own mini-book!

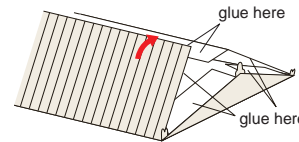
★Directions

Print out pages 1 through 4, cut out each individual part along their cut lines, and fold along the mountain and valley fold lines.

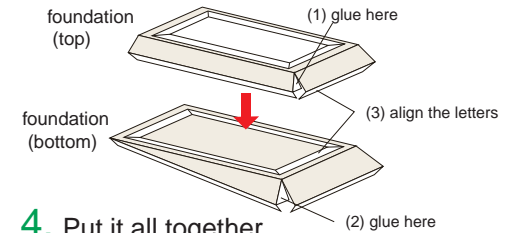
1. Build the sides



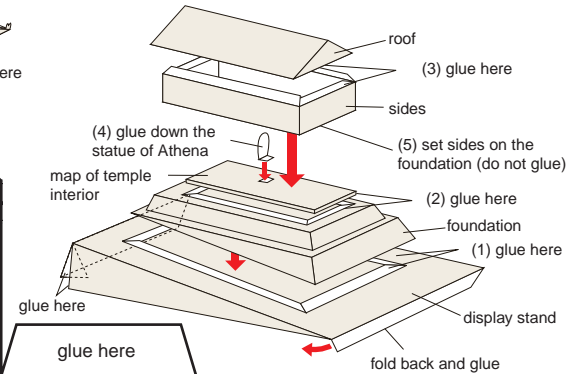
2. Build the roof



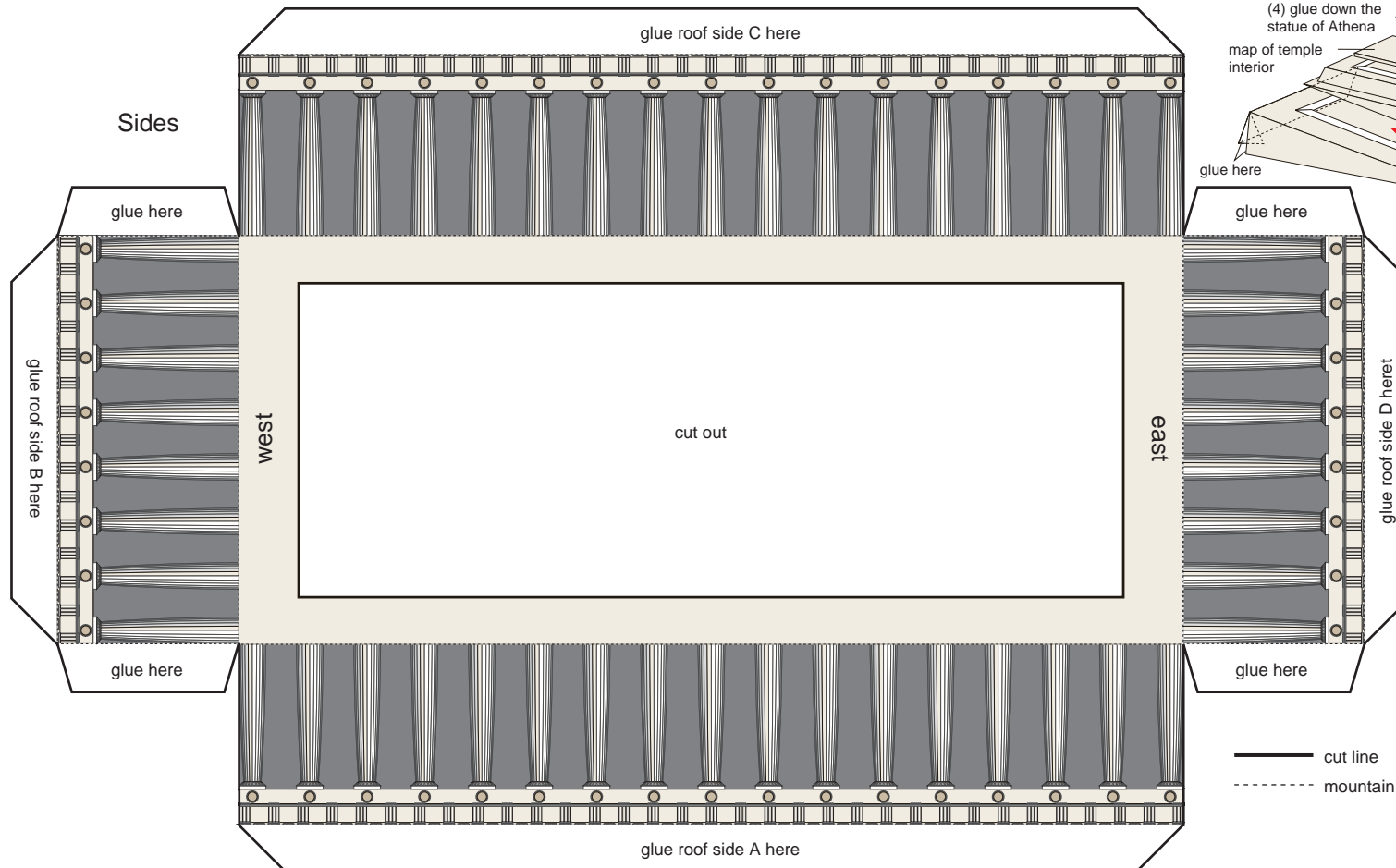
3. Build the foundation



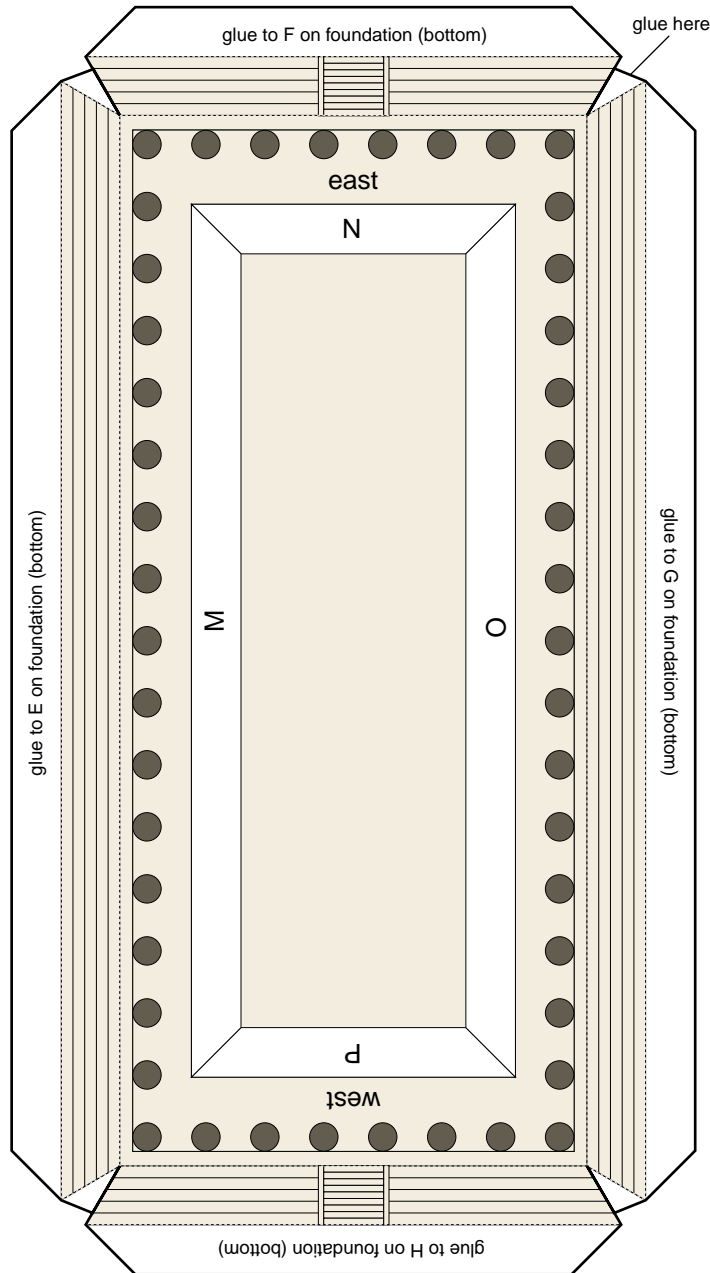
4. Put it all together



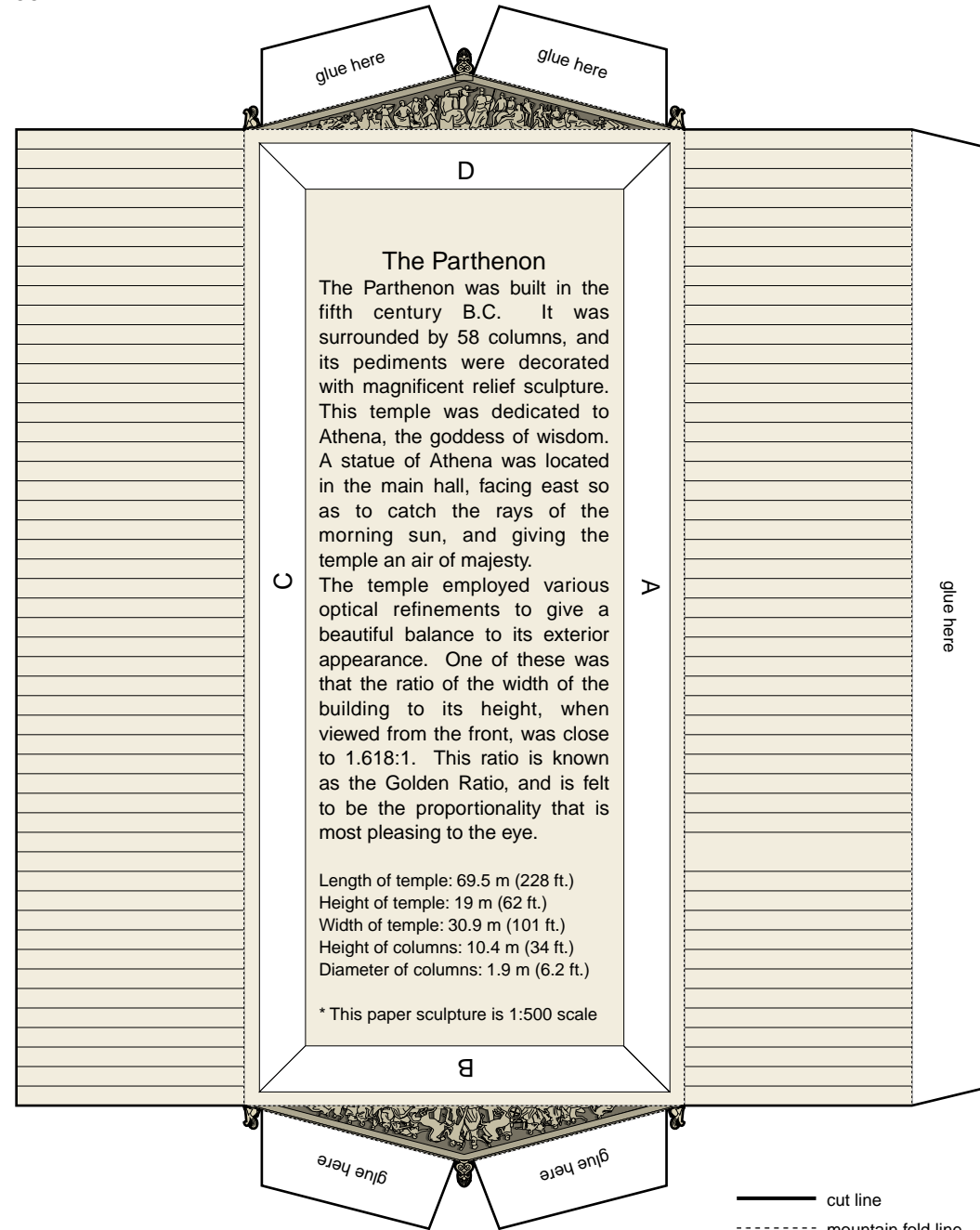
* align the east and west markings on the foundation and sides



Foundation (top)

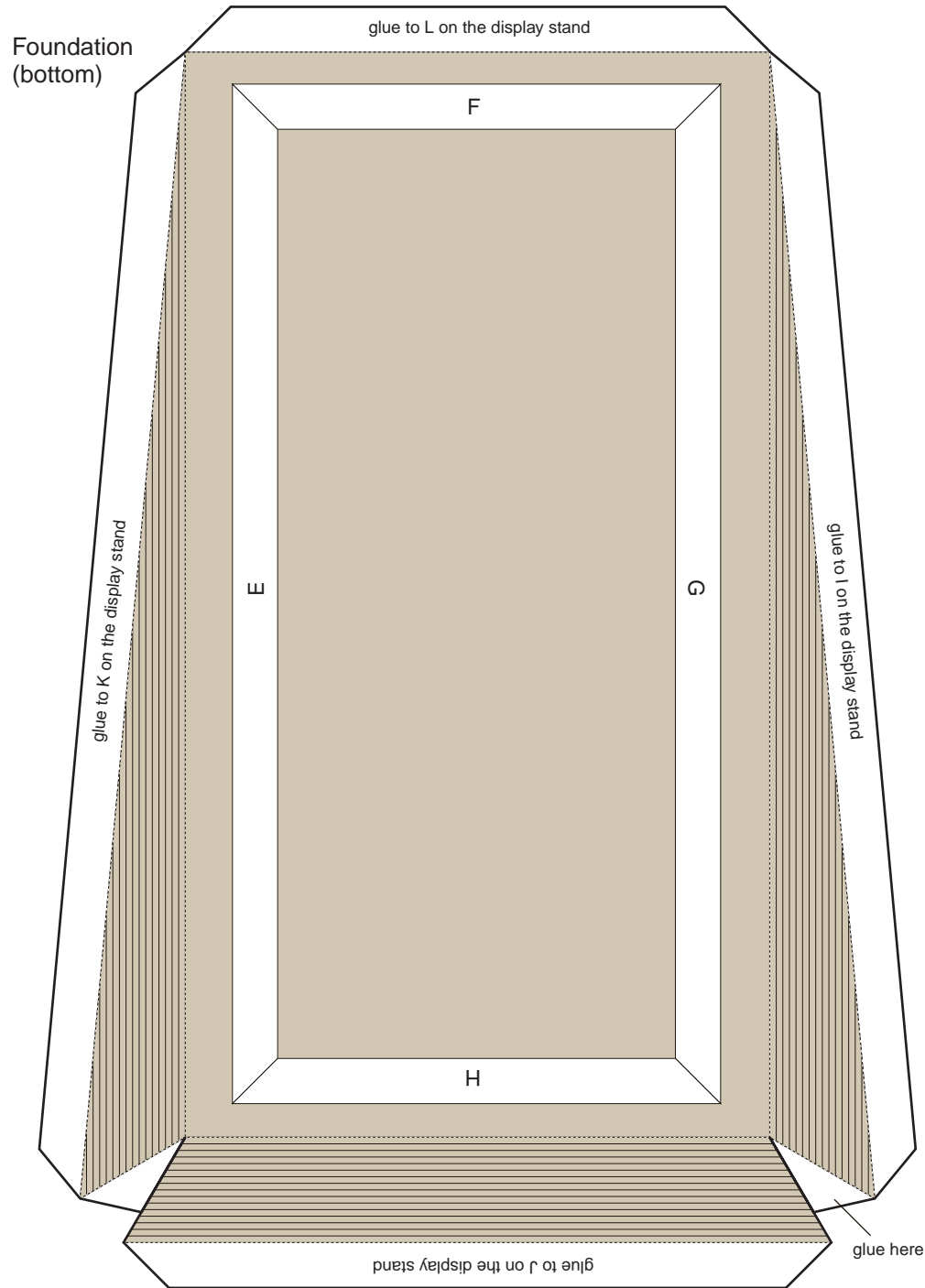


Roof

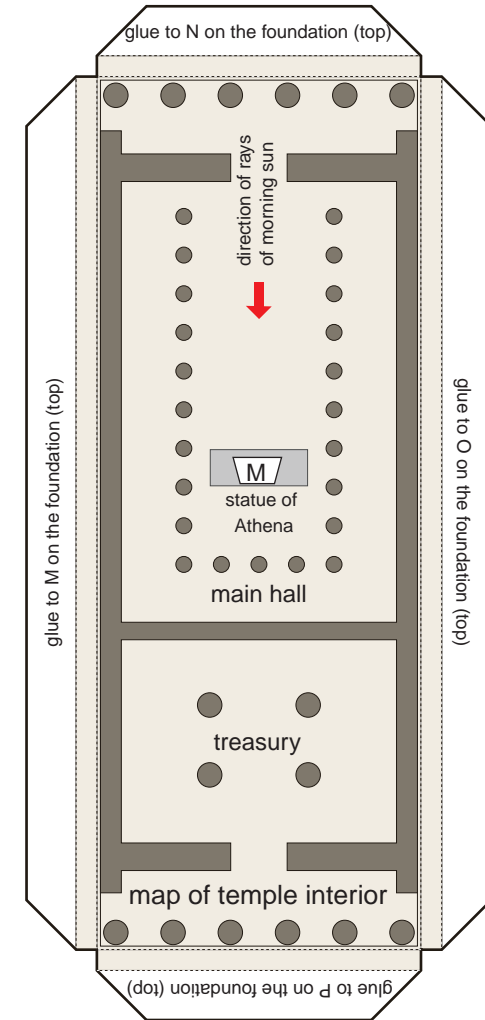


Statue of Athena



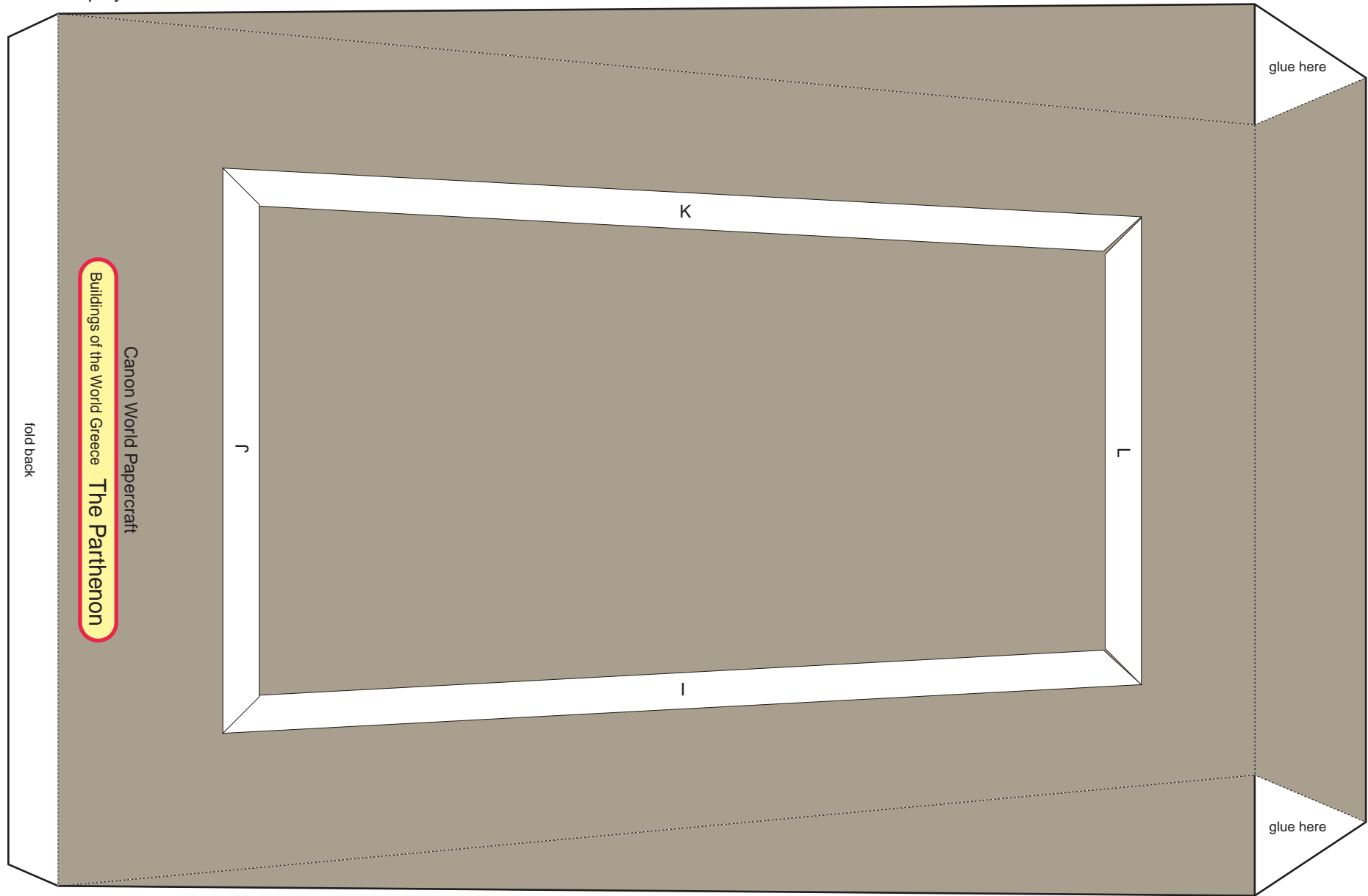


Map of temple interior



— cut line
 - - - - - mountain fold line

Display stand



— cut line
- - - - - mountain fold line