



MANEKI NEKO (Lucky cat)

Beckoning people

The Maneki-neko, or "beckoning cat", is a widely recognizable figure, beloved in Japan as a lucky cat that beckons good fortune. Most people in Japan use similar gestures to beckon someone over, by waving their hands up and down with their palms facing down.

There are various theories about the origin of the Maneki-neko and, even today, no one is certain as to which explanation is the correct one. The Maneki-neko is believed to have originated towards the end of the Edo Period (1603-1867) and eventually developed into the decorative ornament it is today. Folklore has it that the raised paw of the Maneki-neko has meaning. The raised left paw is believed to attract "people (customers)", and the figurines can be seen displayed in many shops with the hope of achieving a "thriving business".

Many of the older varieties of Maneki-neko have their left paw raised, and most of these are seen with a gold bell on the collar or with a small gold coin, called a "koban", on the collar. Written on the koban are the words "Fuku" (good fortune) and "Fukuju" (good fortune and longevity).

Perhaps the idea that beckoning many people draws good fortune was eventually reflected on the words on the koban.



★ Assembly Instructions

- 1) Carefully cut out the parts.
- 2) Make mountain folds and valley folds along the dotted lines, as indicated by the directions.
- 3) Assemble the parts in the order shown by the numbers on the glue tabs. (Read the Explanation of Symbols for more information.)
- 4) Attach the parts in order. (Read the Explanation of Symbols for more information.)
- 5) Your Paper craft model is finished!

★ Tools

Scissors, glue (We recommend craft glue.)

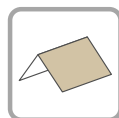
★ Caution

Keep glue away from small children.
Be careful not to cut your fingers when using scissors.
Fold the folding lines before gluing.

★ Explanation of Symbols



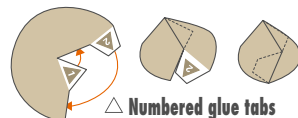
————— Cut line



--- Mountain fold



--- Valley fold



△ **Numbered glue tabs**
Glue the parts together in the order indicated by the numbers.



Arrows (⇔)
Do not glue these areas. Insert the part into its mating part, in the direction indicated by the arrow.



△ **Glue tabs with symbols and part names.**
These tabs are to be glued onto the matching parts, which name is indicated on the tab.

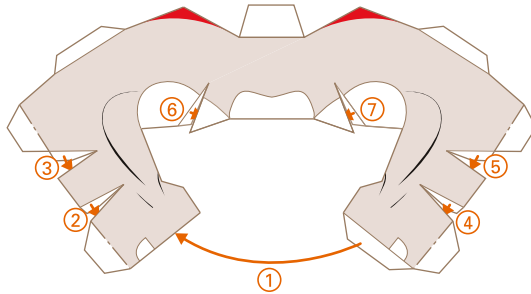


△ **Glue the tabs numbered on a white background.**
After gluing all the other tabs to their matching parts, glue these tabs in the order indicated by the numbers.

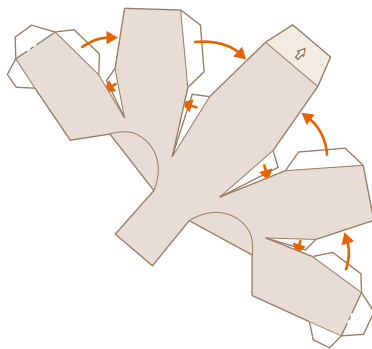
★ Build the HEAD, EAR and EYES

1 HEAD

HEAD (Front)



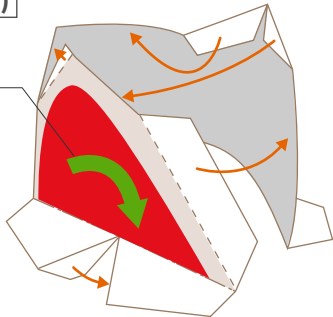
HEAD (Back)



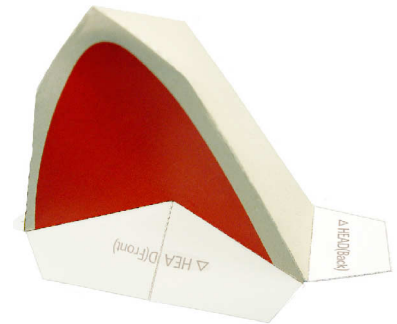
2 EARS

EAR (Left)

Bend so that the front is indented.



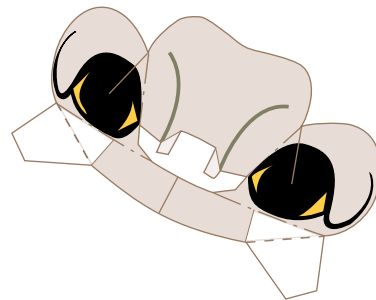
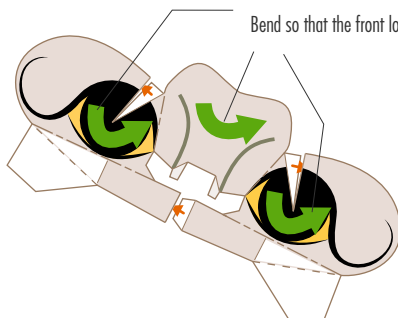
Build the EAR (Right) in the same manner.



3 EYES

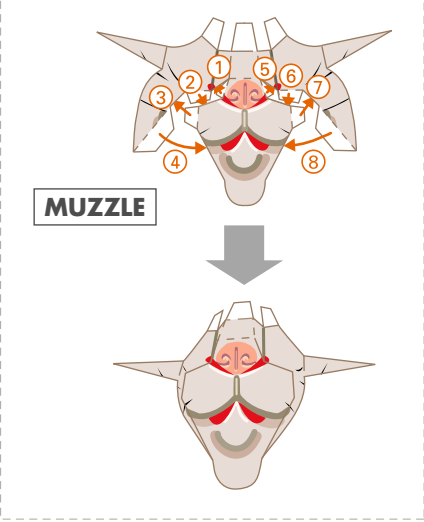
EYES

Bend so that the front looks stretched out.

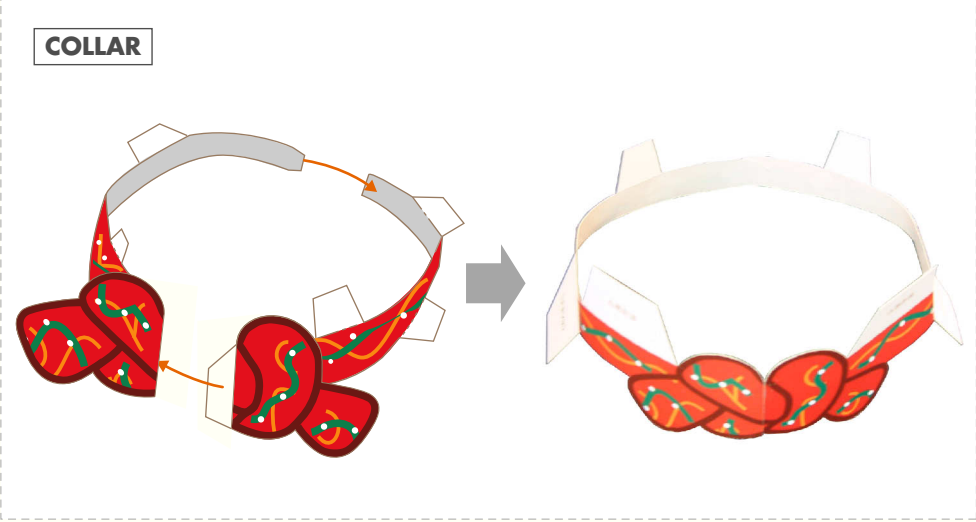


★ Build the MUZZLE, COLLAR, and the whole HEAD (1)

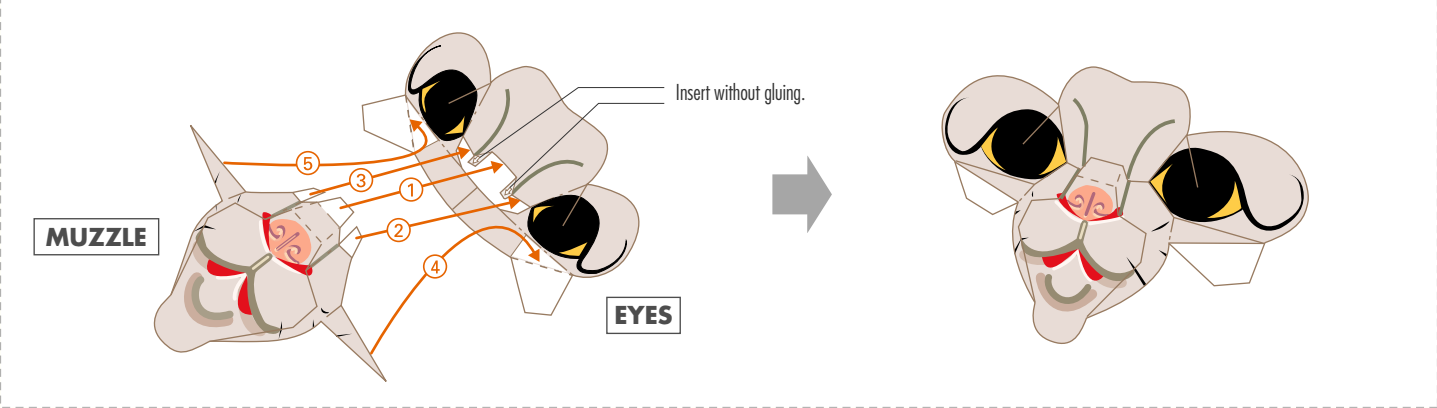
4 MUZZLE



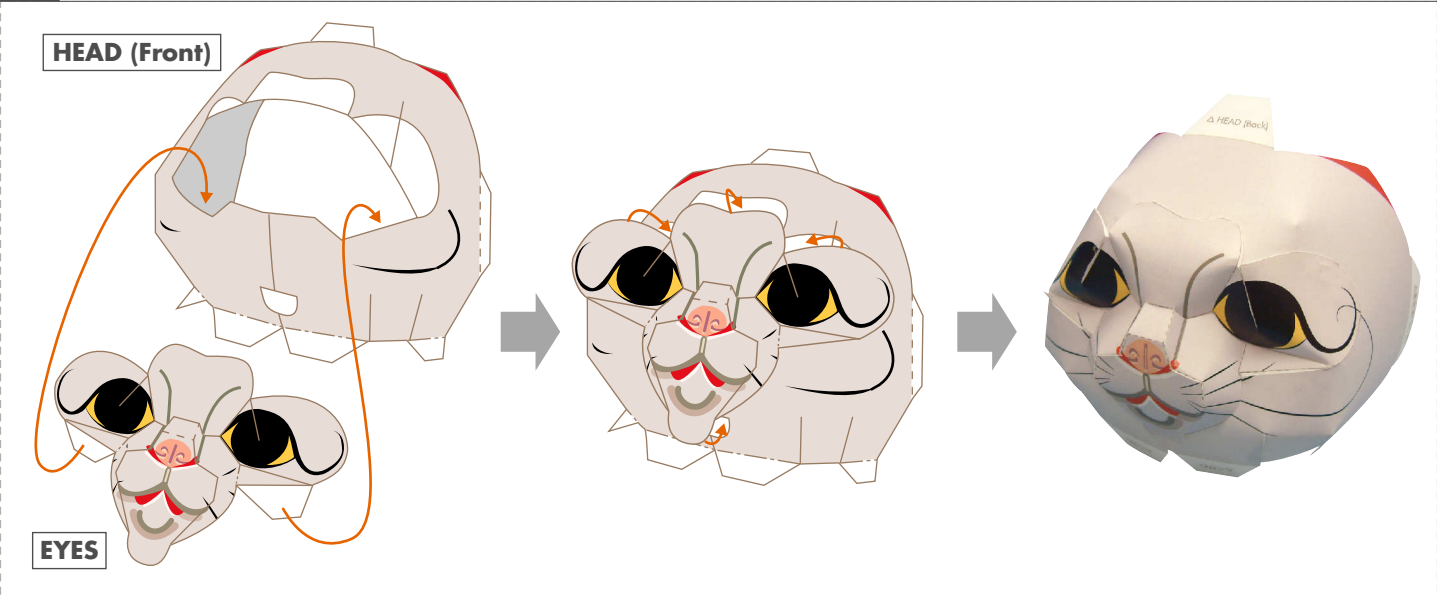
5 COLLAR



6 Glue the EYES, MUZZLE together

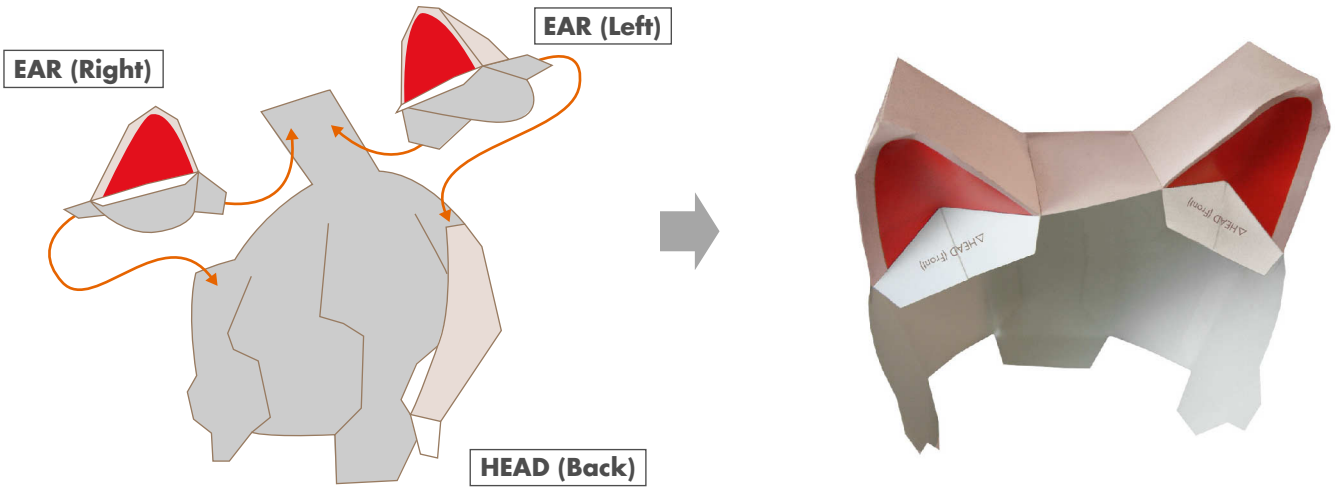


7 Glue the HEAD (Front), FACE together

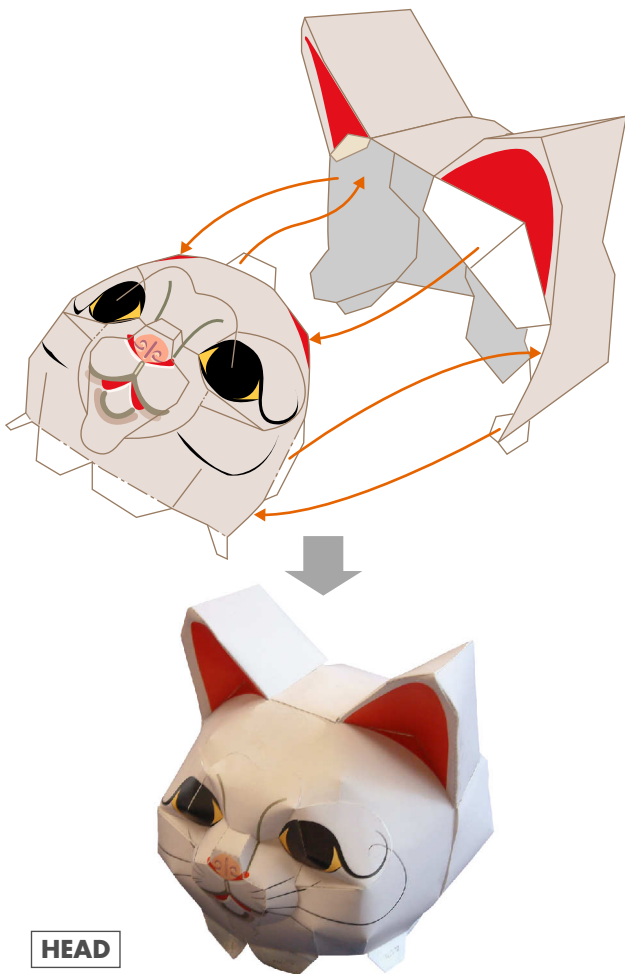


★ Build the whole HEAD (2)

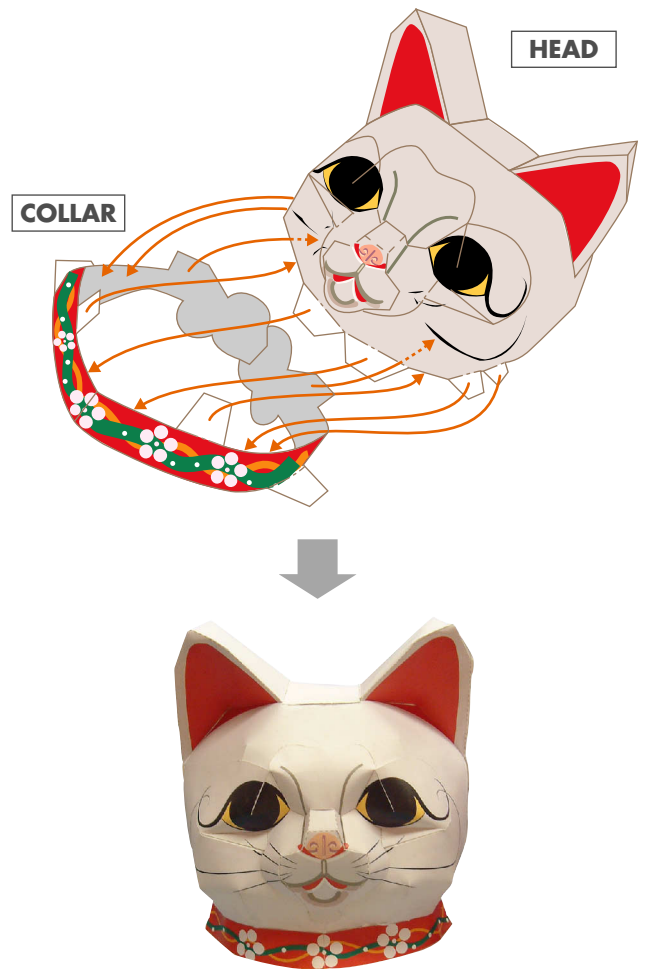
8 Glue the HEAD (Back), EARS together



9 Build the HEAD

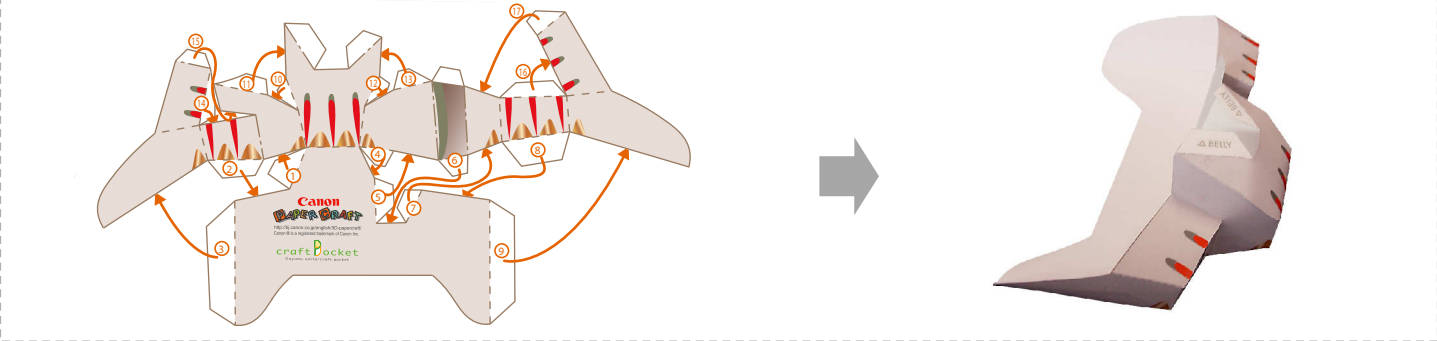


10 Glue the HEAD, COLLAR together

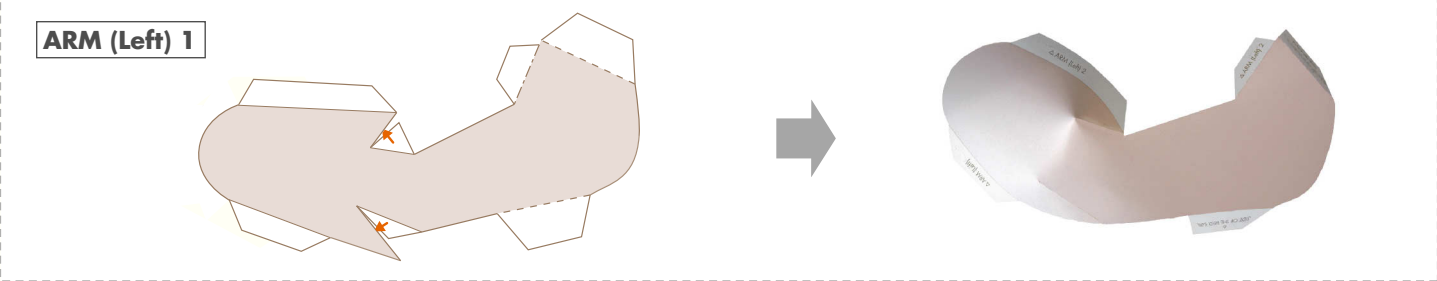


★ Build the FEET, ARM (Left) and BELLY

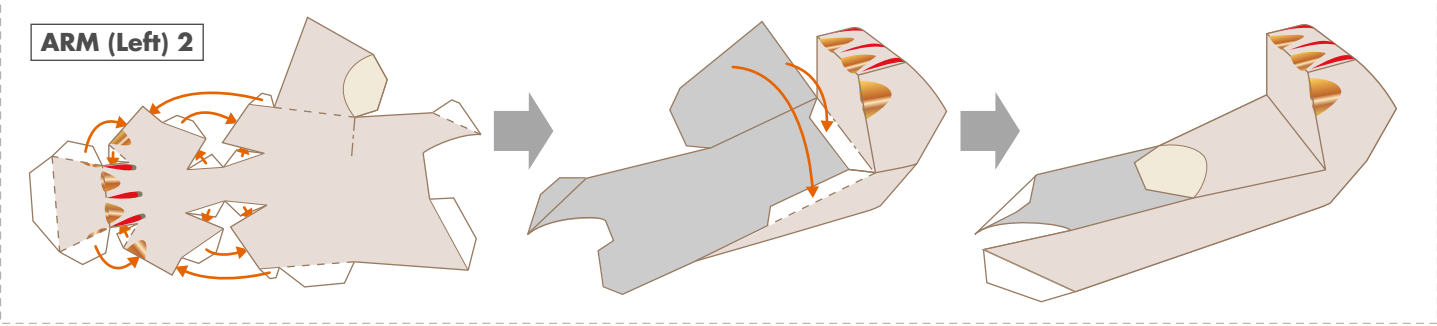
11 FEET



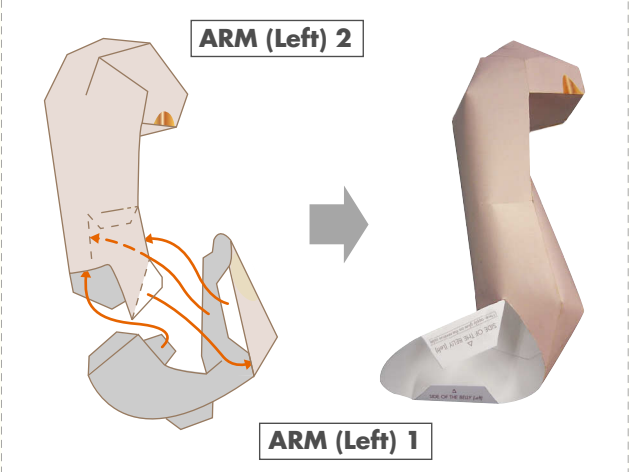
12 ARM (Left) 1



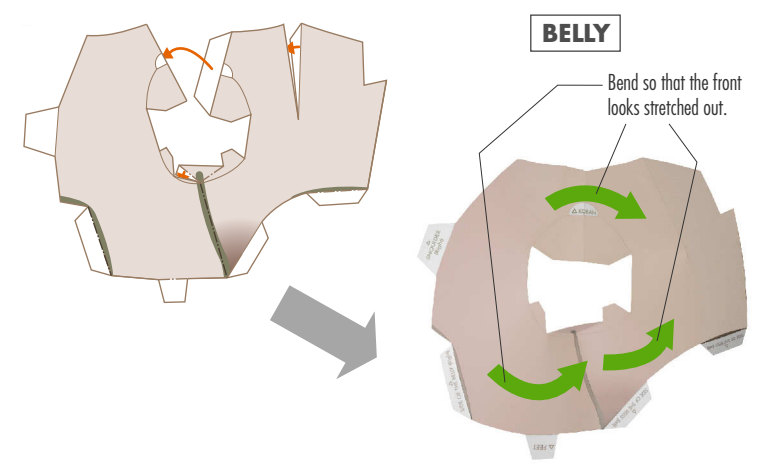
13 ARM (Left) 2



14 Glue the ARM (Left) 1 and ARM (Left) 2 together



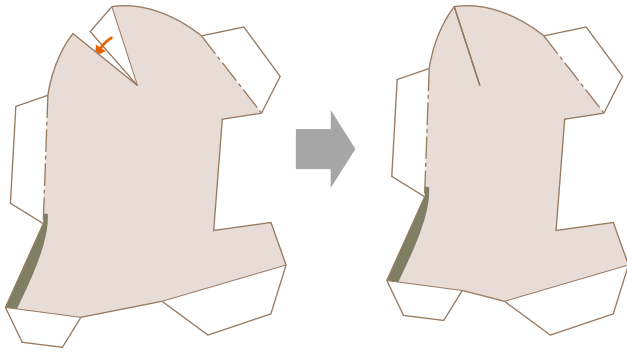
15 BELLY



★ Build the SHOULDER (Right), KOBAN, and BELLY

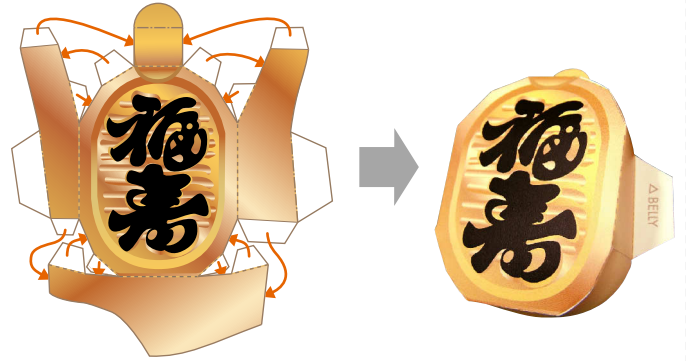
16 SHOULDER (Right)

SHOULDER (Right)



17 KOBAN

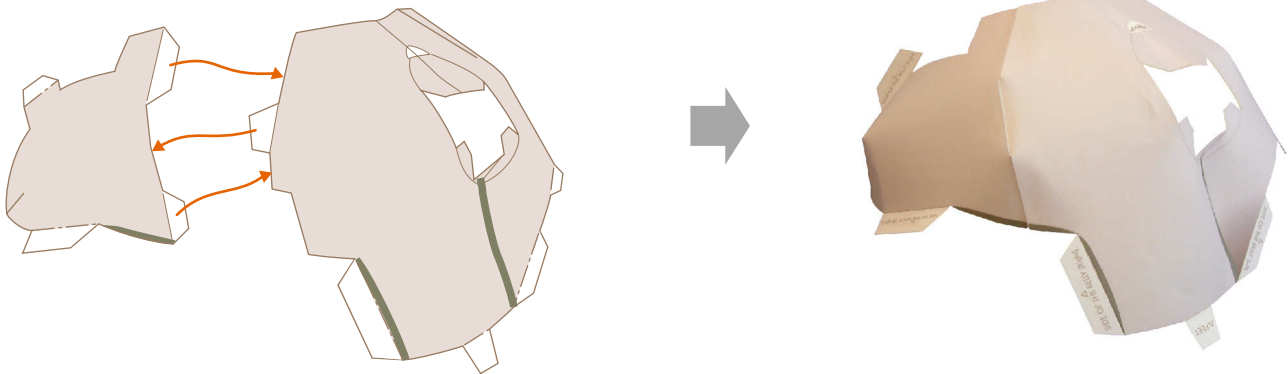
KOBAN



18 Glue the SHOULDER (Right) and the BELLY together

SHOULDER (Right)

BELLY



19 Glue the KOBAN to the BELLY

BELLY

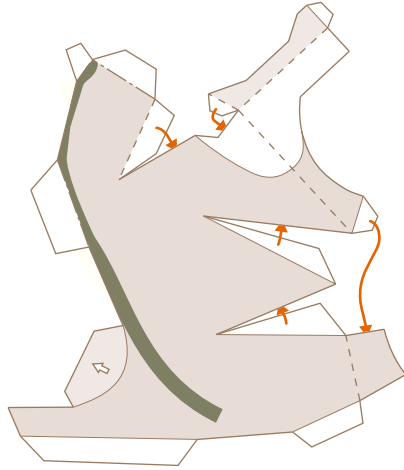
KOBAN



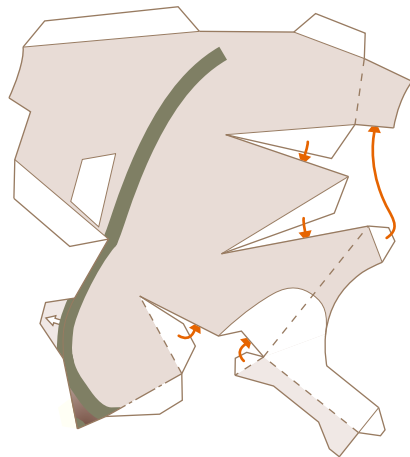
★ Build the SIDES and BODY

20 SIDE OF THE BELLY

SIDE OF THE BELLY (Right)



SIDE OF THE BELLY (Left)

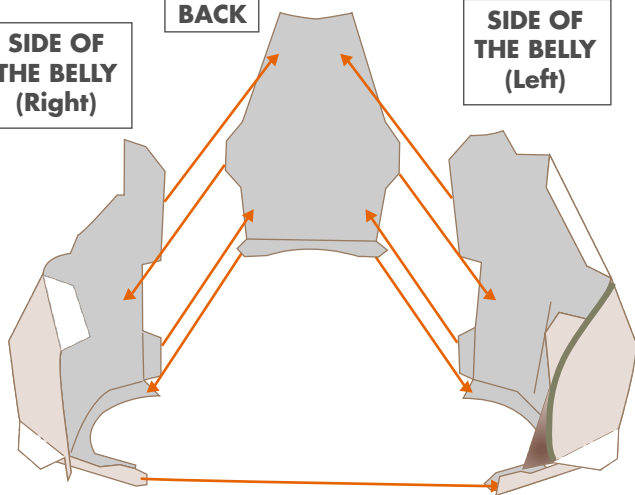


21 BODY

SIDE OF THE BELLY (Right)

BACK

SIDE OF THE BELLY (Left)

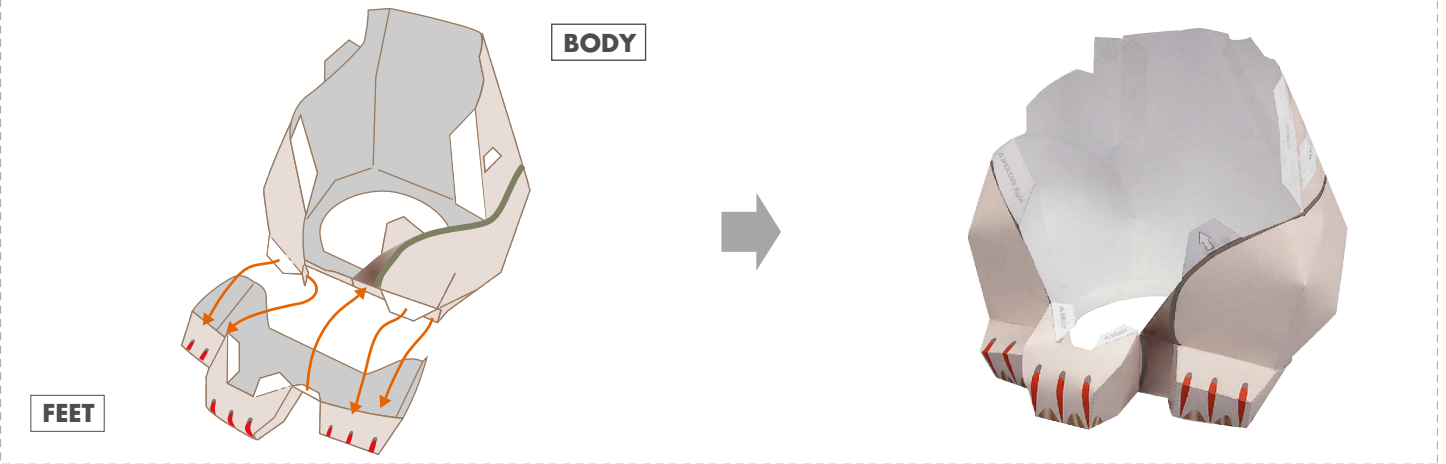


BODY

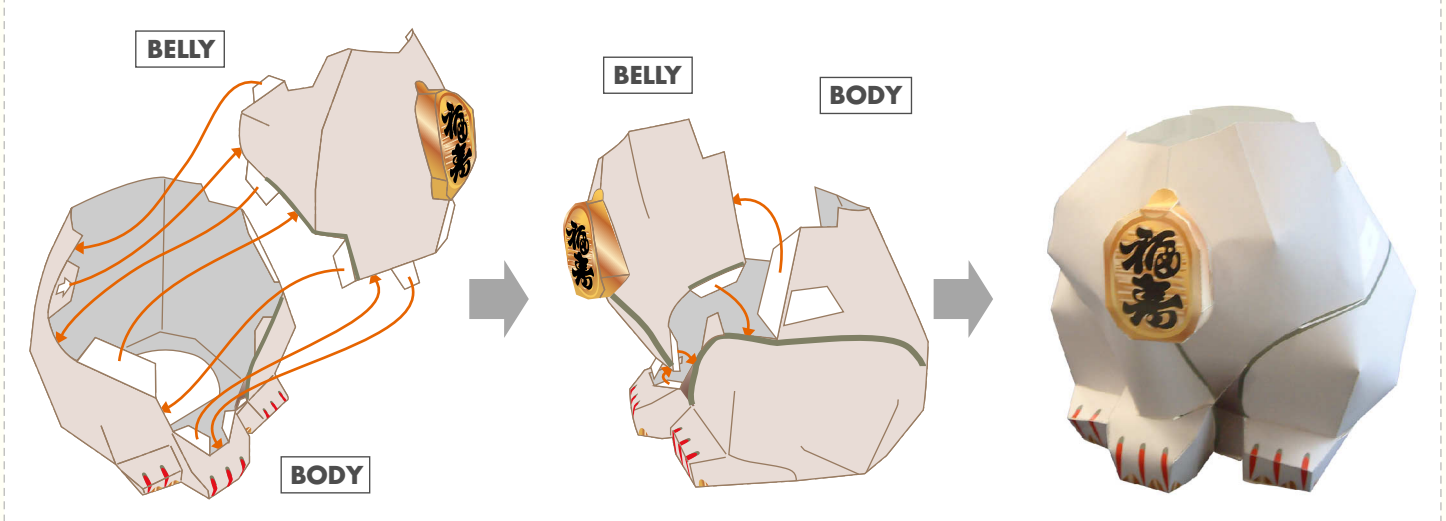


★ Put it all together (1)

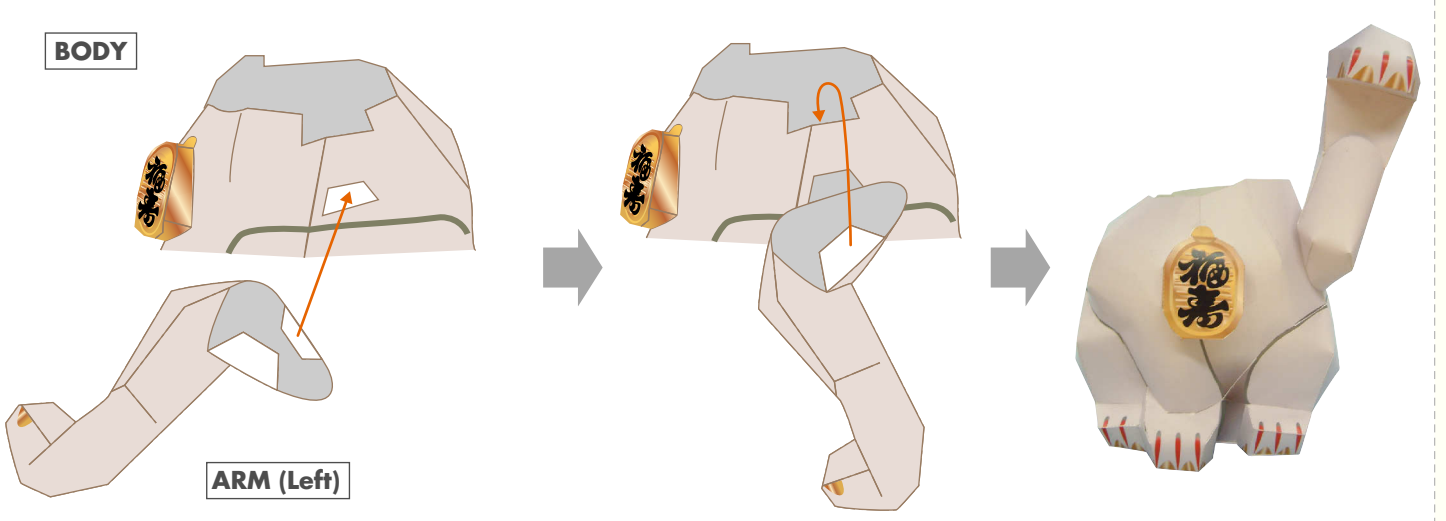
22 Glue the BODY and FEET



23 Glue the BODY and BELLY



24 Glue the BODY to ARM (Left)



★ Put it all together (2) / Complete

25 Glue the BODY and HEAD

Glue the koban (gold coin) of your choice.
If you want to make a wish, write it on the plain koban and glue it on.

Glue thoroughly from the inside of the body.

HEAD

KOBAN

BODY

★ Complete !

