

PAPER CRAFT

<http://www.canon.com/c-park/en/>



Labrador Retriever

Height: 54 to 62cm **Weight:** 25 to 34kg is considered ideal.

Origin: UK

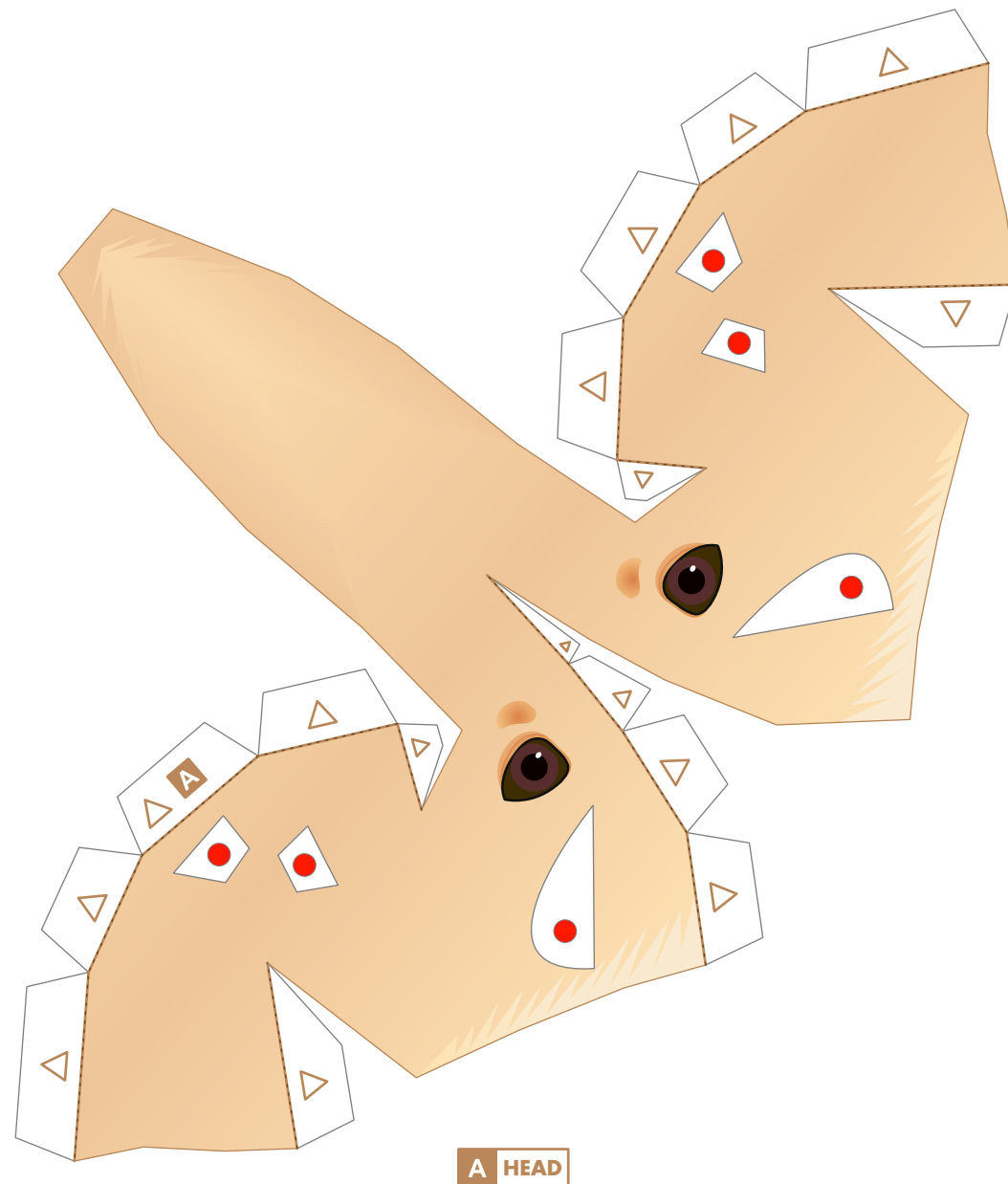
Temperament: Warm and friendly. Very affectionate.

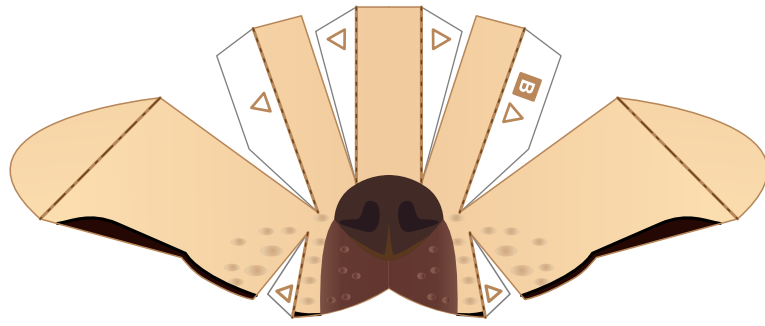
The Labrador Retriever is named after its original role as a 'retrieving' gun dog and the Labrador peninsula in Canada.

Some say that the ancestors of the breed were dogs who crossed over the Atlantic from Europe to Canada on fishing boats sometime in the 16th century and were eventually brought back to Britain sometime in the 19th century. Originally rather fierce, the breed was improved to make it obedient and easy to train.

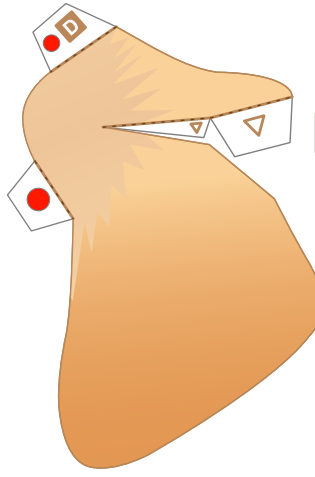
The Labrador has an otter-like tail and loves to swim and play in the water. They are loved by many as guide dogs for the blind, care dogs and rescue dogs and are also extremely popular as pets.

This Papercraft Labrador Retriever is about half the size of the real dog.

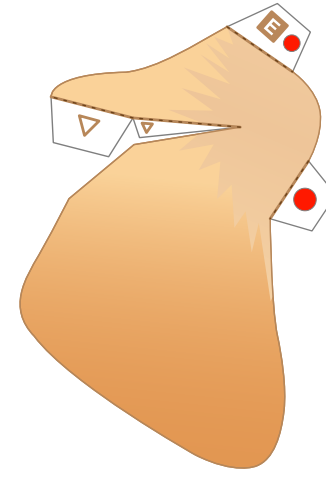




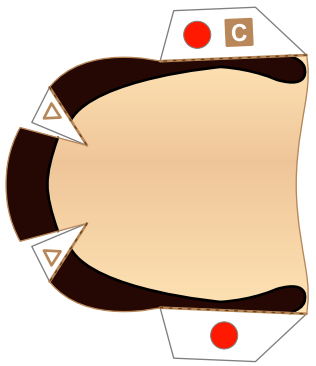
B MUZZLE 1



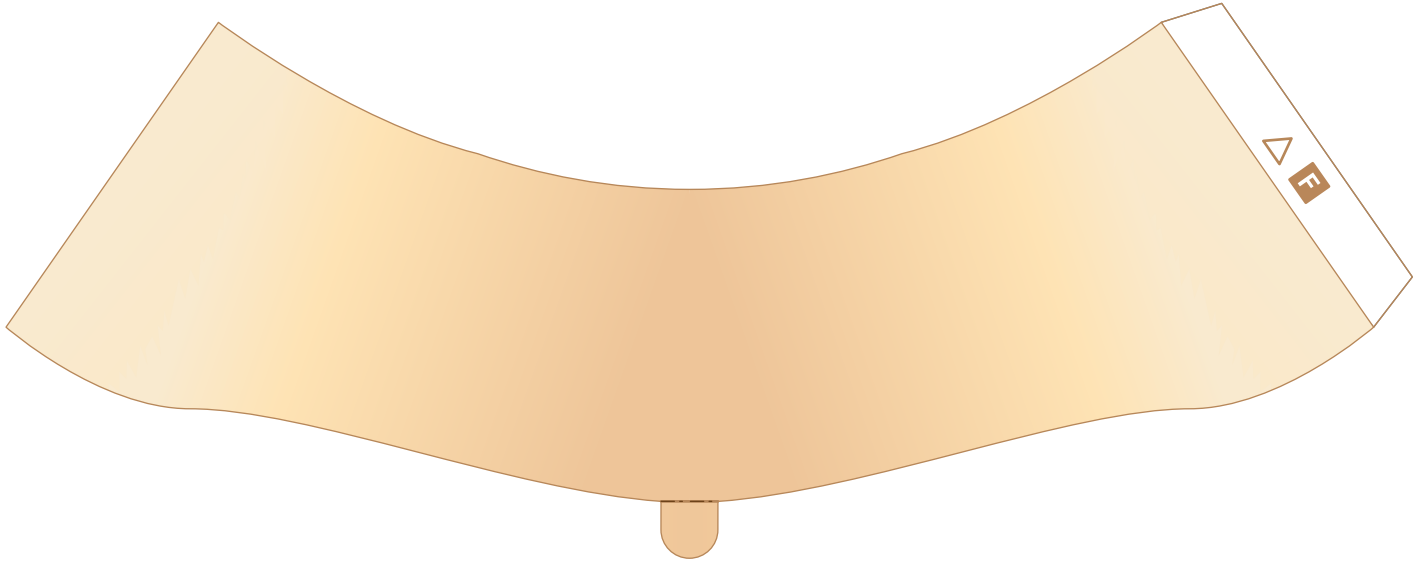
D EAR L



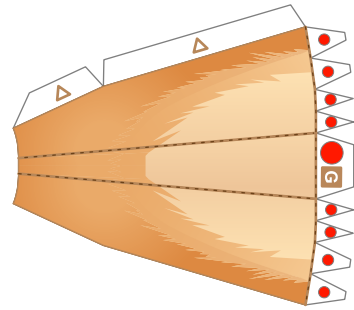
E EAR R



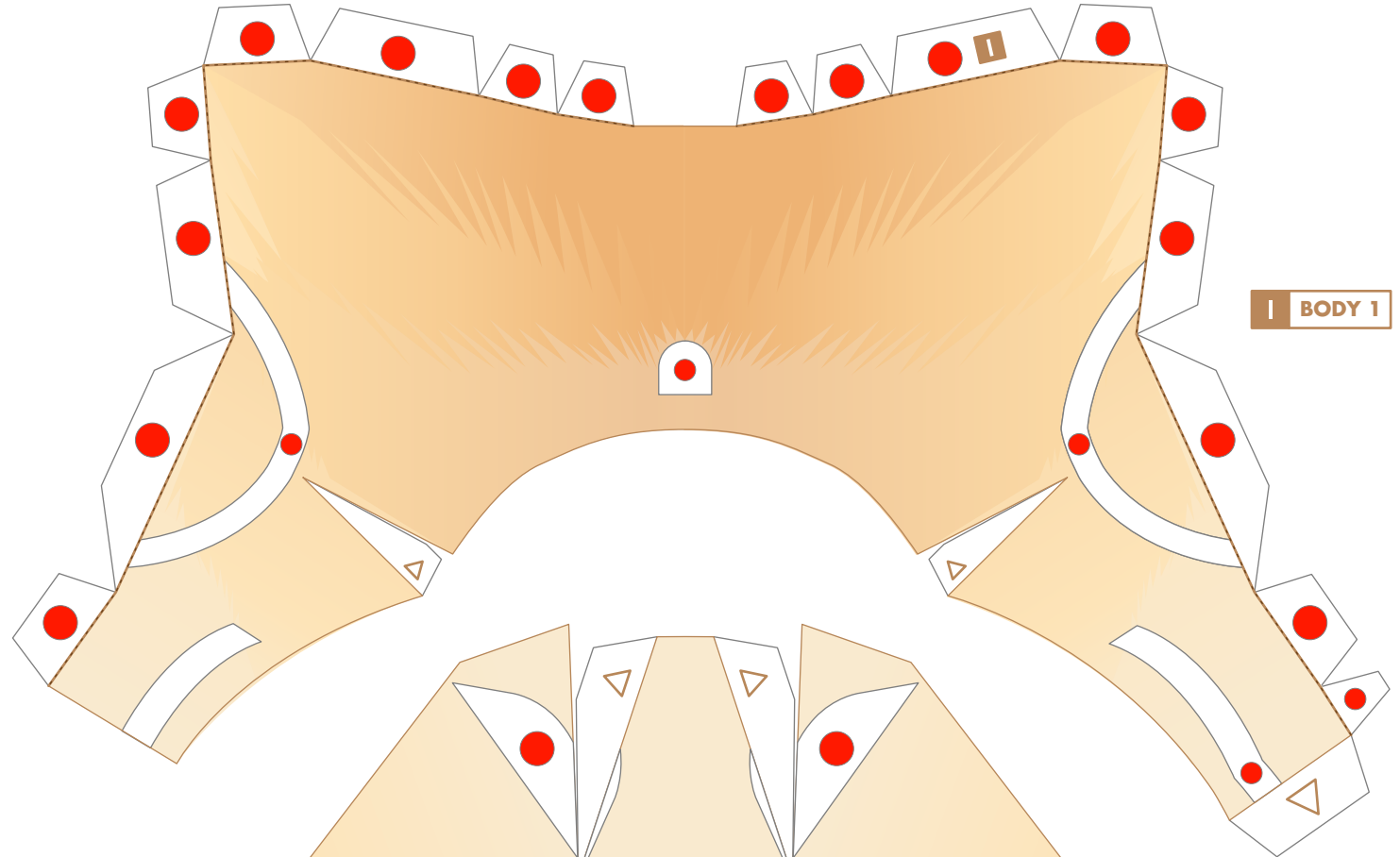
C MUZZLE 2



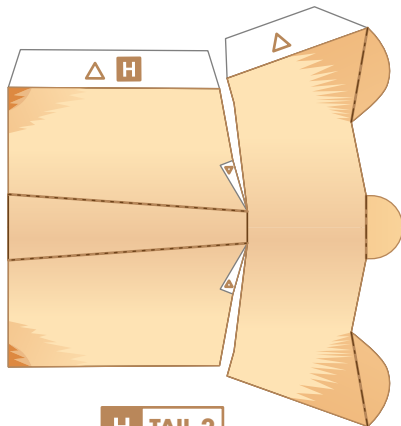
F NECK



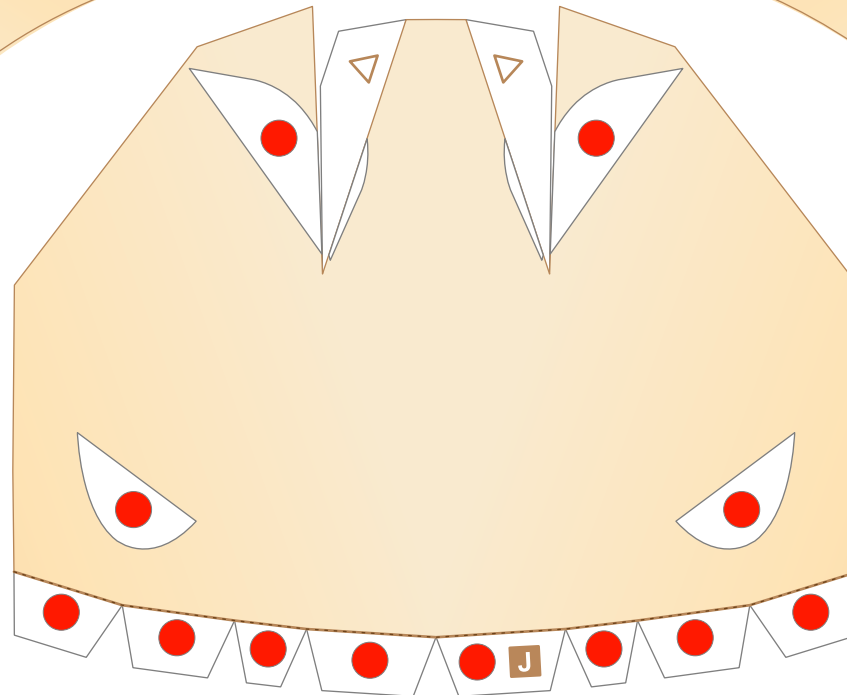
G TAIL 1



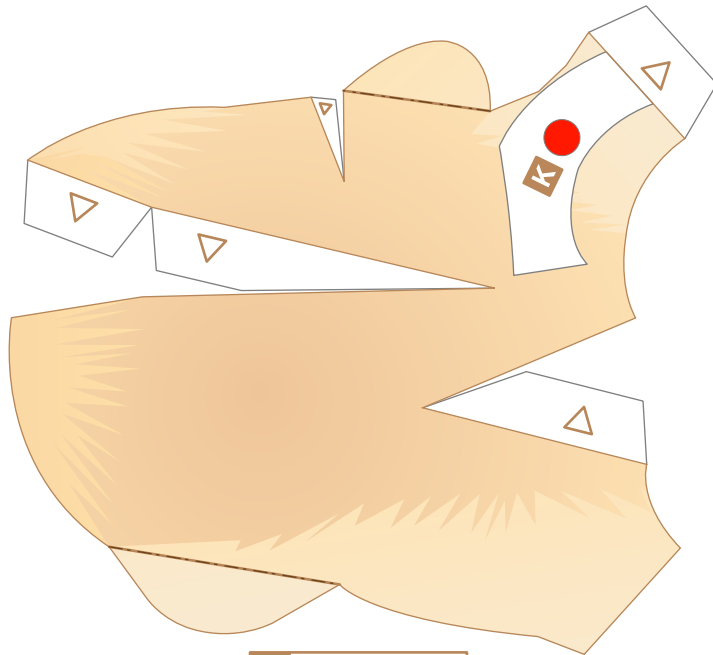
I BODY 1



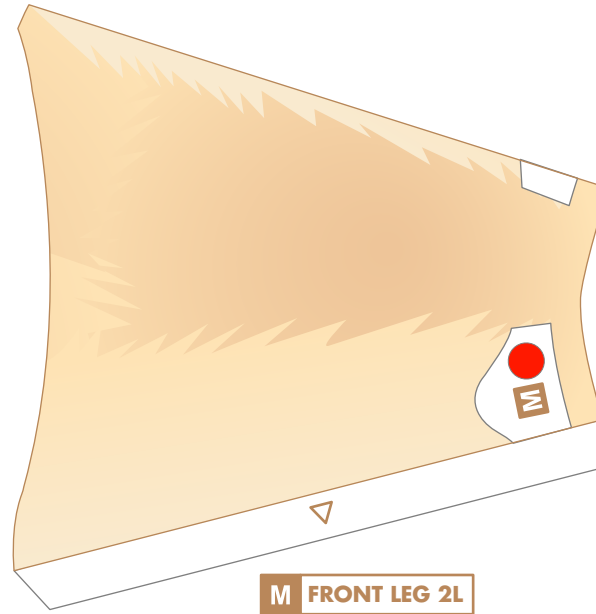
H TAIL 2



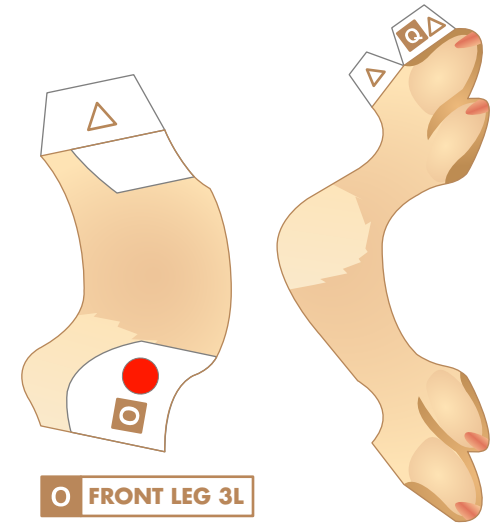
J BODY 2



K FRONT LEG 1L

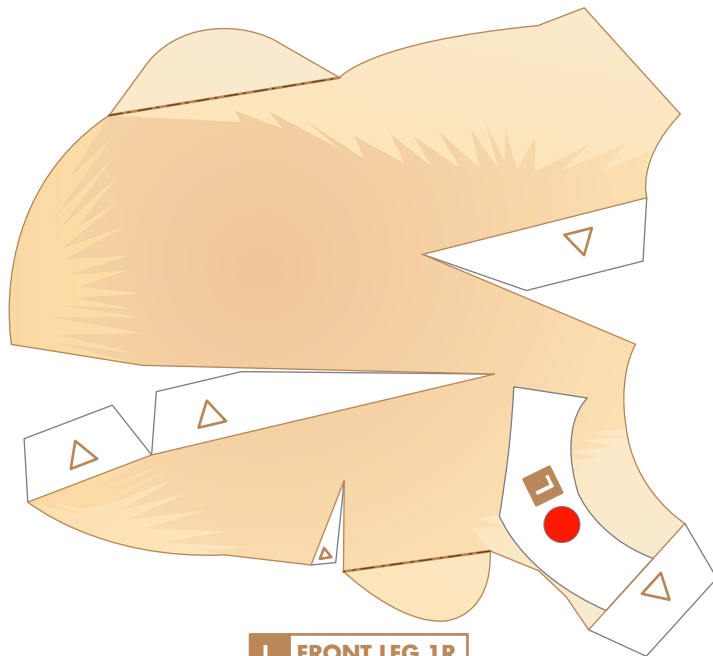


M FRONT LEG 2L

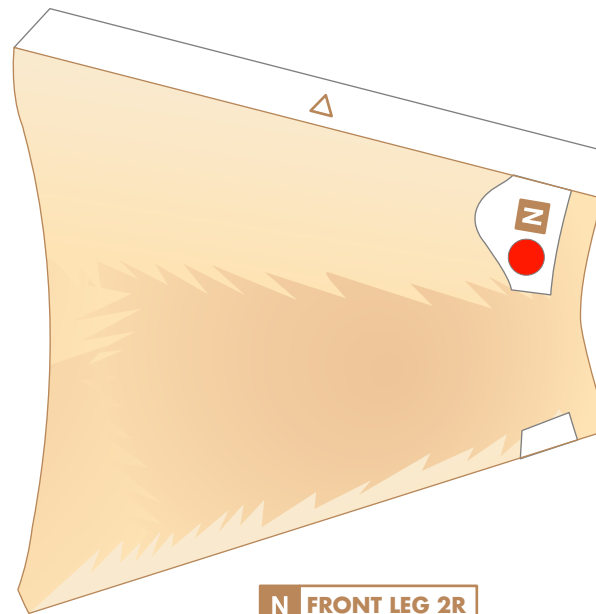


O FRONT LEG 3L

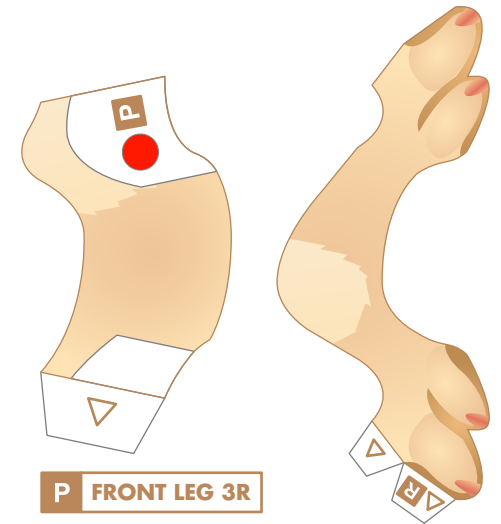
Q FRONT LEG 4L



L FRONT LEG 1R

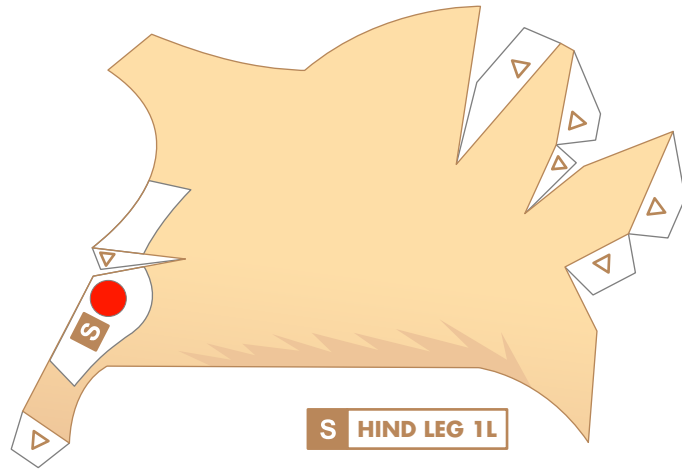


N FRONT LEG 2R

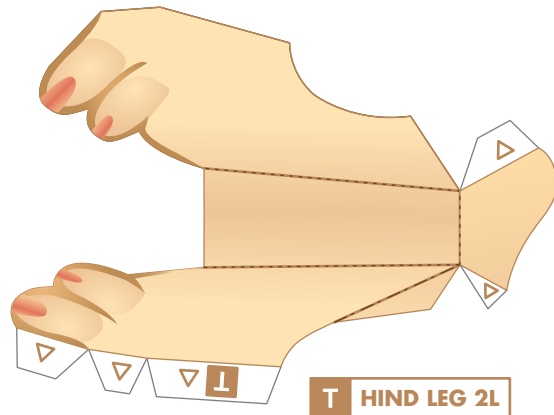


P FRONT LEG 3R

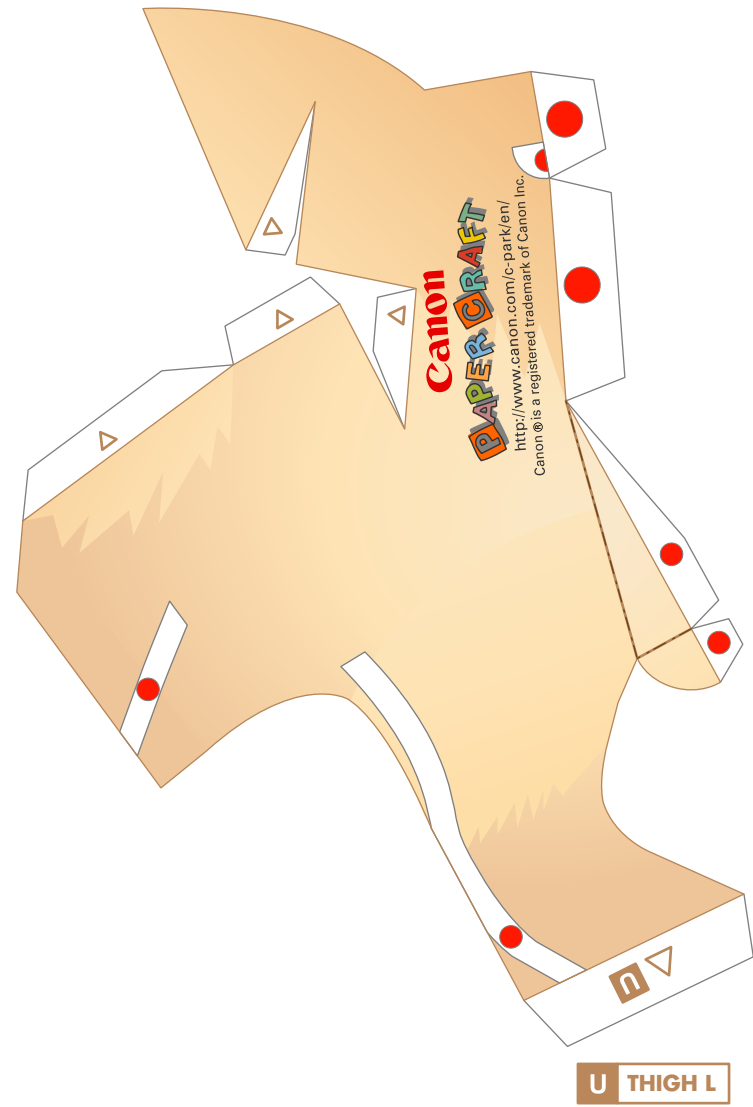
R FRONT LEG 4R



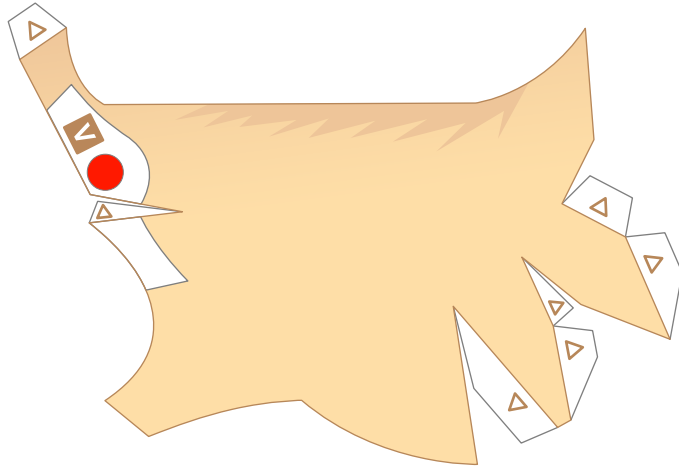
S HIND LEG 1L



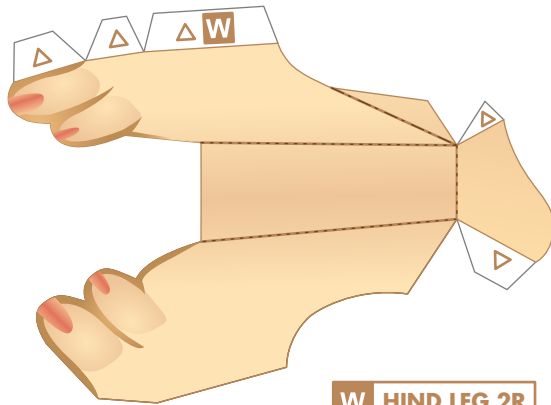
T HIND LEG 2L



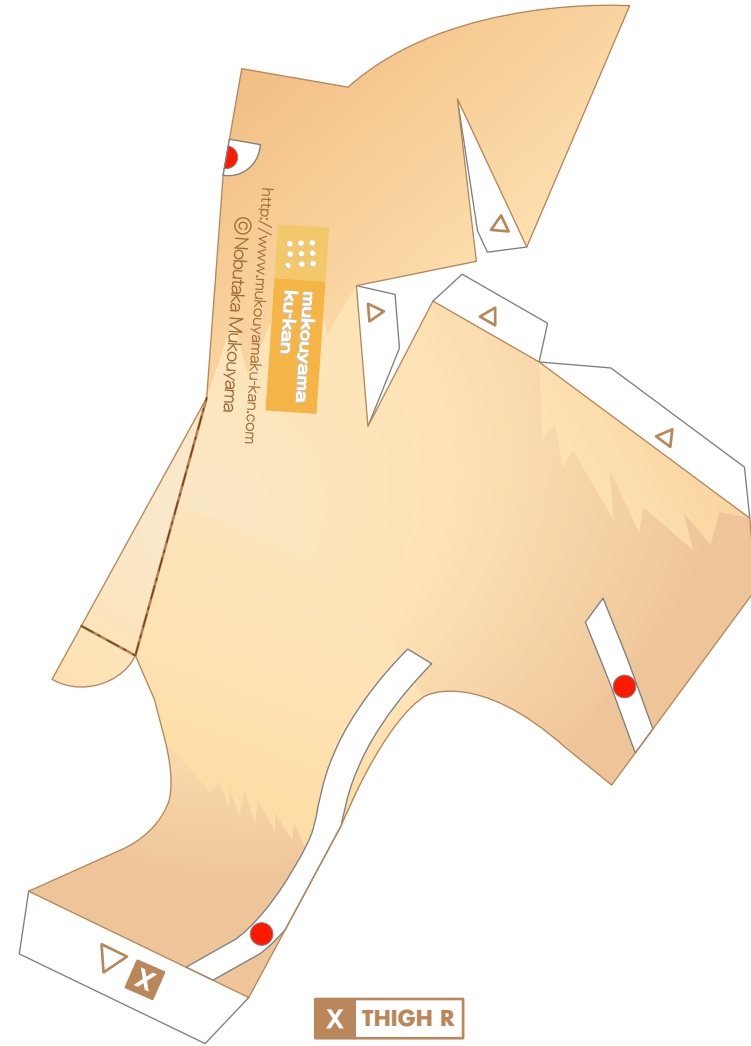
U THIGH L



V HIND LEG 1R



W HIND LEG 2R



X THIGH R

