

Canon Gift box B (Red) : Parts

Canon® is a registered trademark of Canon Inc. © Canon Inc. © Yukiko Tanikoshi



You will need

scissors, paste, a used ballpoint pen (tracing along the fold lines makes them easier to fold)

Explanation of Symbols

▲ Numbered glue tabs

Glue the parts together in the order indicated by the numbers.



[Caution]

Glue, scissors and other tools may be dangerous to young children so be sure to keep them out of the reach of young children.

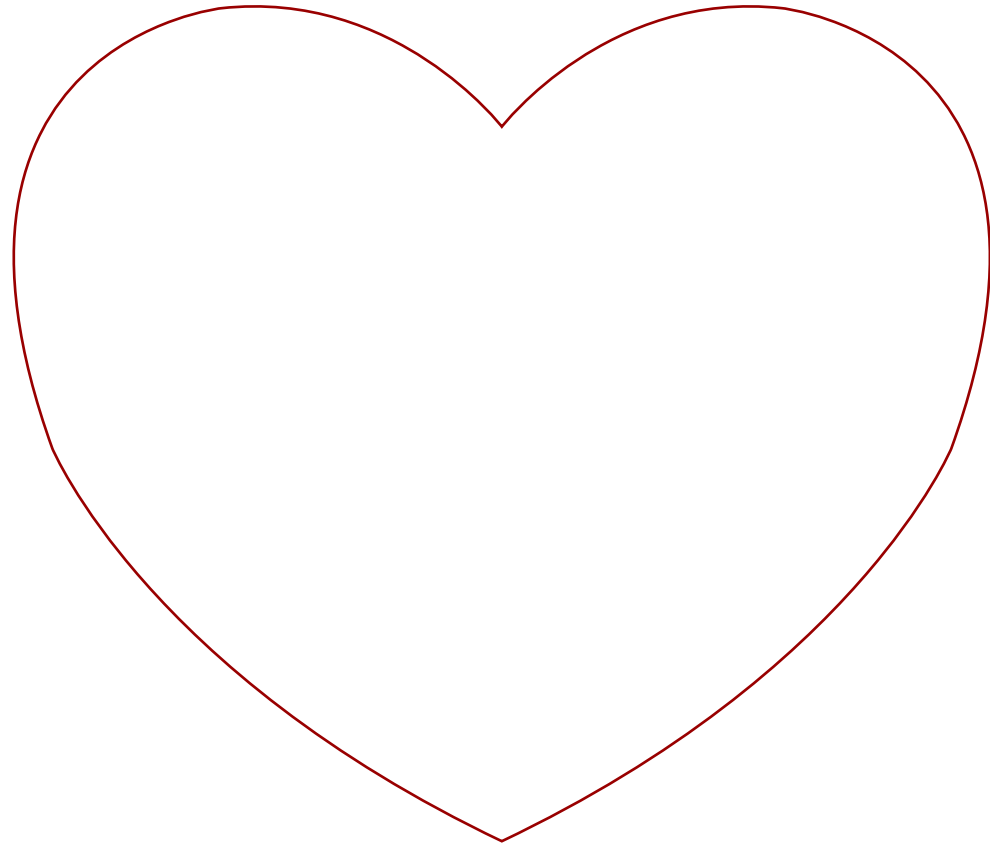
Parts

— Cut line

- - - - Mountain fold

- · - · - · Valley fold

1

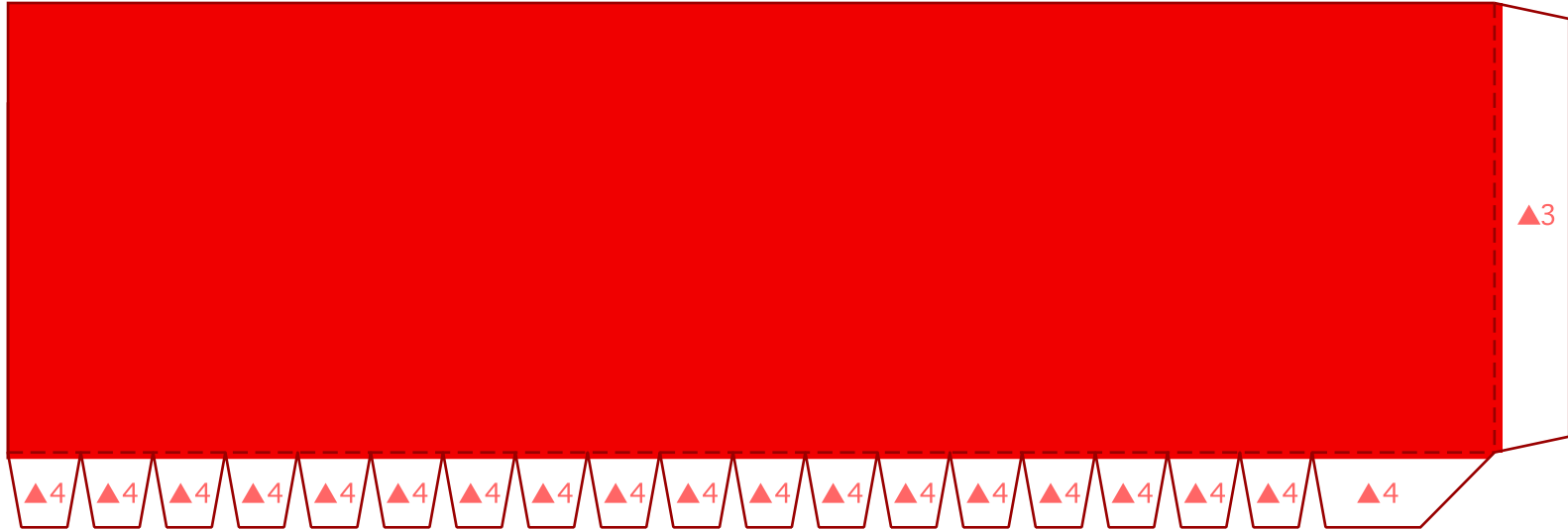


Canon Gift box B (Red) : Parts

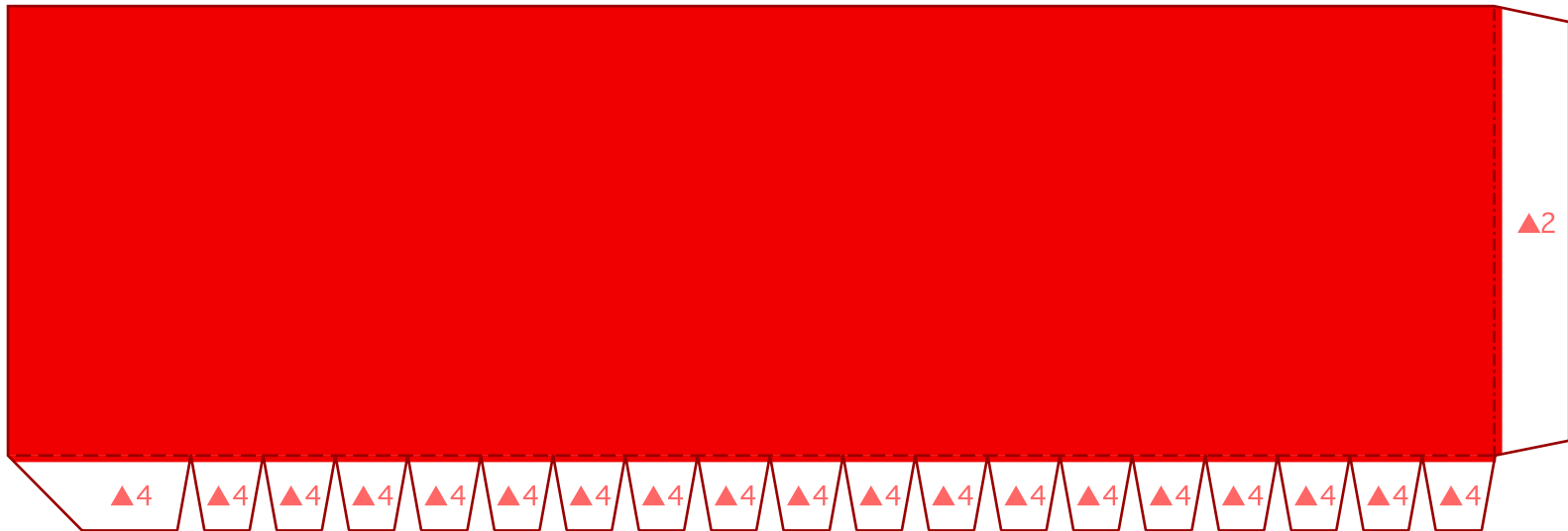
Canon® is a registered trademark of Canon Inc. © Canon Inc. © Yukiko Tanikoshi

Parts

2



3



Parts

4



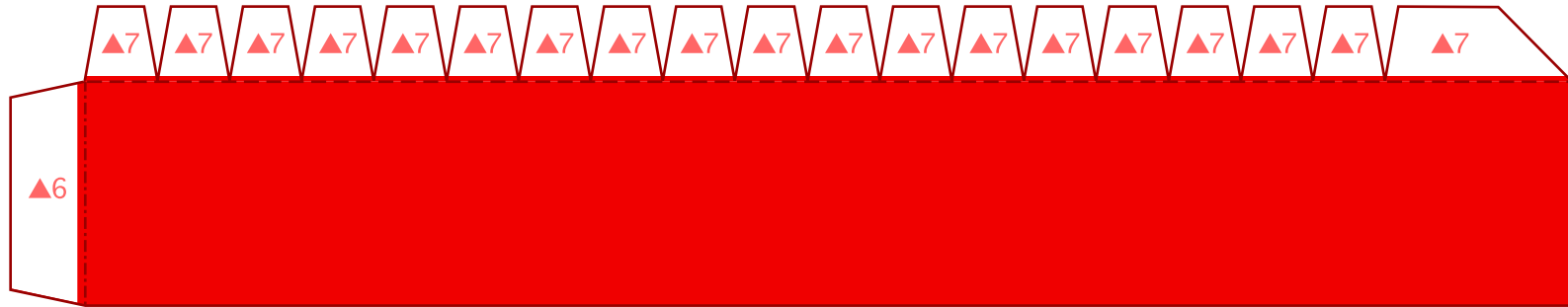
<http://www.canon.com/c-park/en/>
© Yukiko Tanikoshi

Canon Gift box B (Red) : Parts

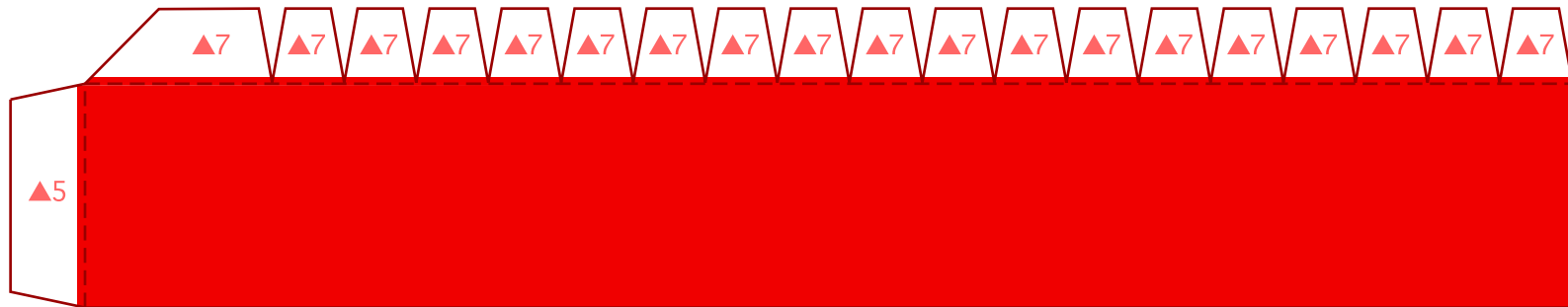
Canon® is a registered trademark of Canon Inc. © Canon Inc. © Yukiko Tanikoshi

Parts

5



6

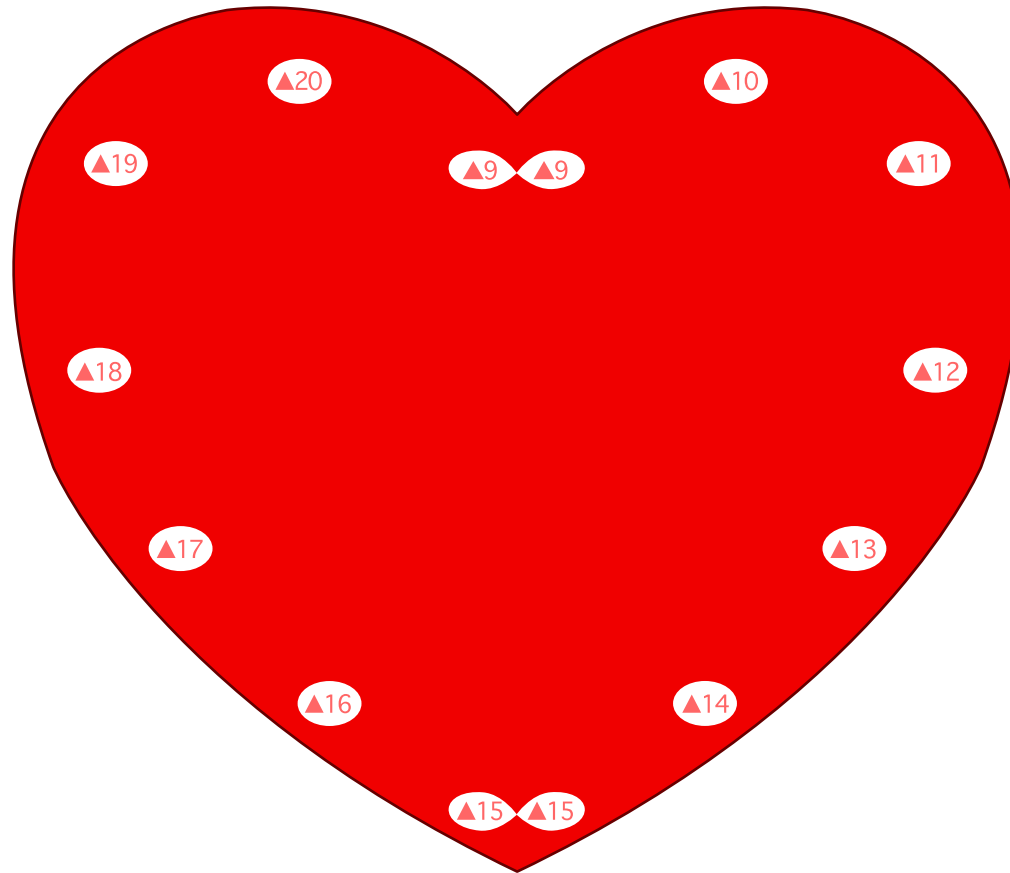


Canon Gift box B (Red) : Parts

Canon® is a registered trademark of Canon Inc. © Canon Inc. © Yukiko Tanikoshi

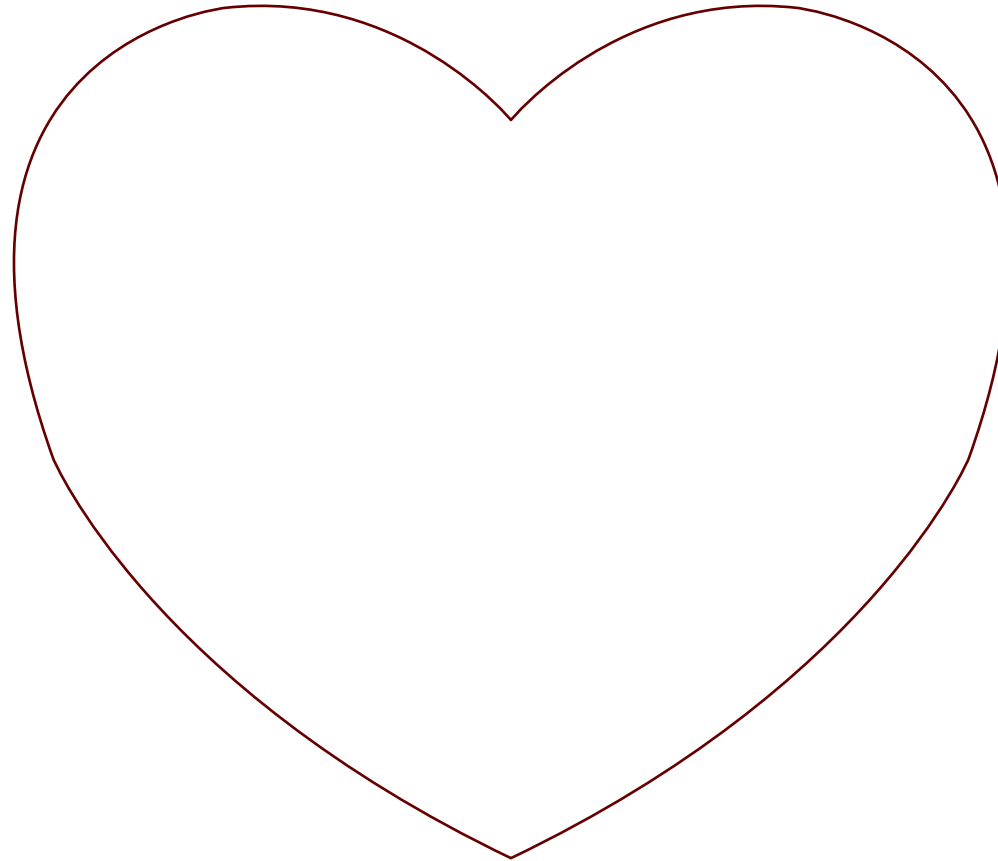
Parts

7



Parts

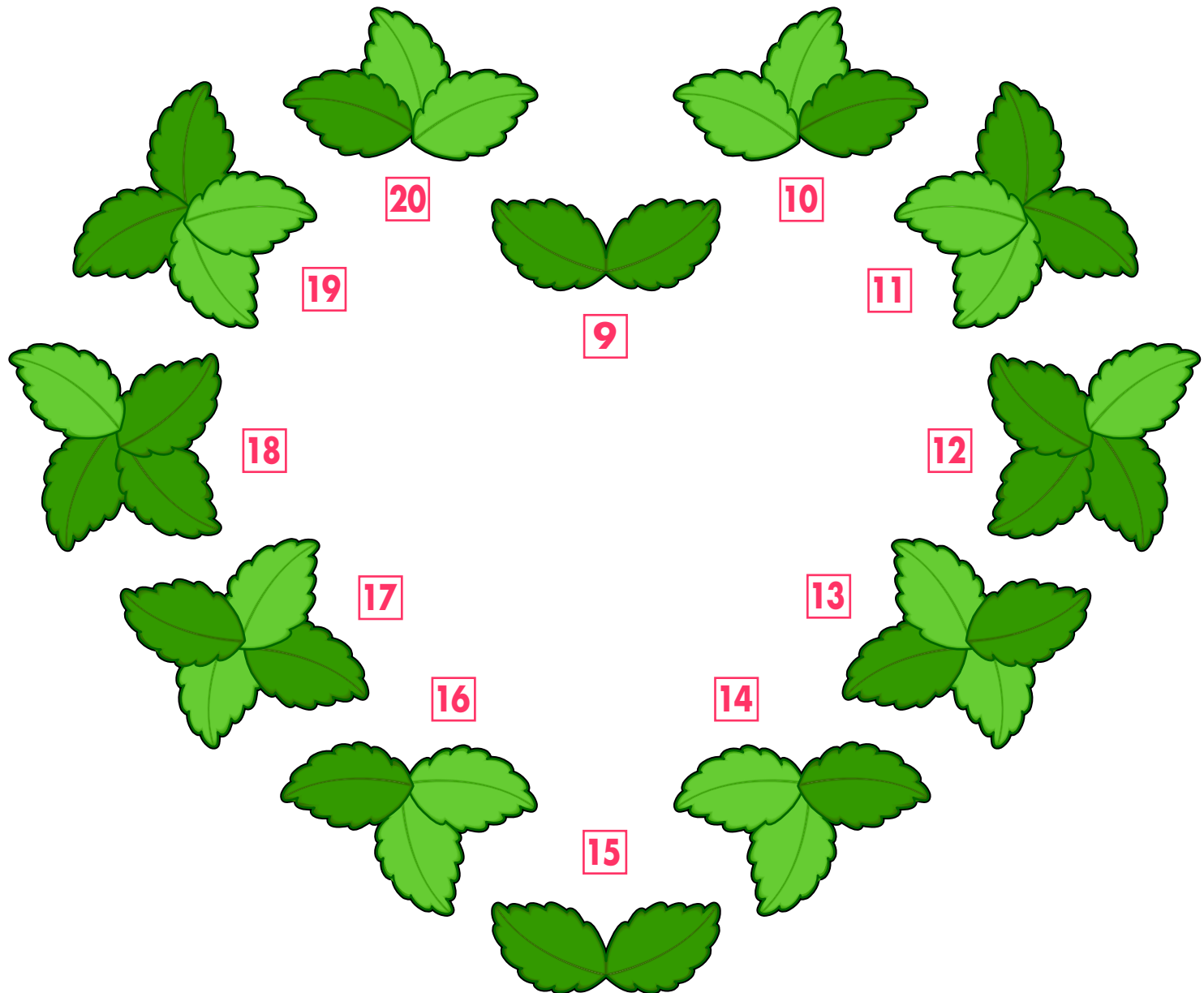
8



Canon Gift box B (Red) : Parts

Canon® is a registered trademark of Canon Inc. © Canon Inc. © Yukiko Tanikoshi

Parts



Canon Gift box B (Red) : Parts

Canon® is a registered trademark of Canon Inc. © Canon Inc. © Yukiko Tanikoshi

Parts

21



22



23

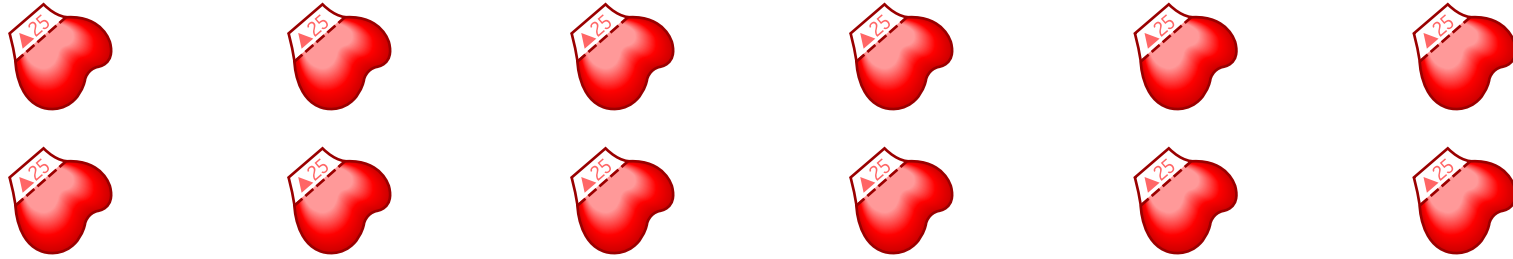


Canon Gift box B (Red) : Parts

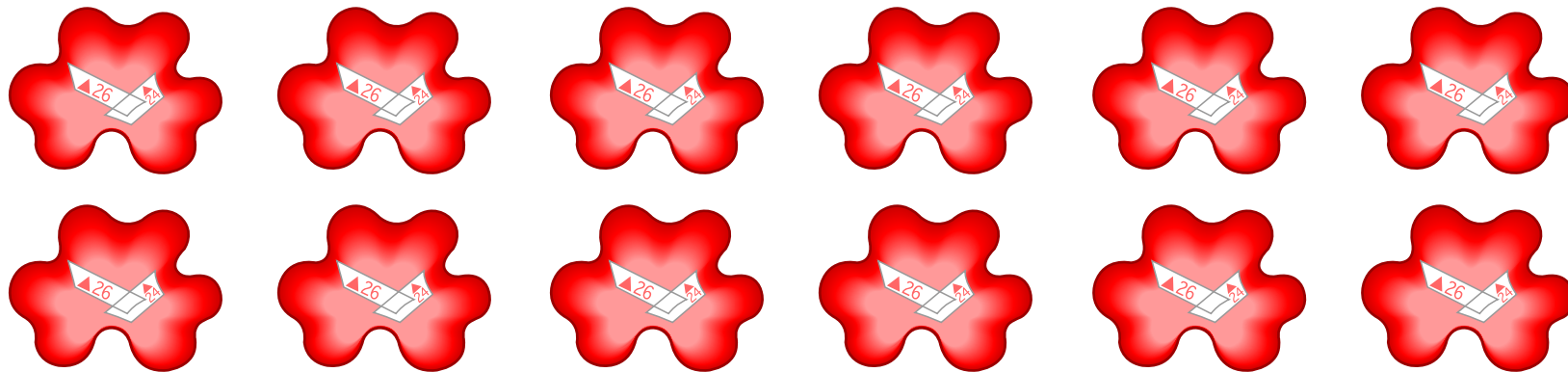
Canon® is a registered trademark of Canon Inc. © Canon Inc. © Yukiko Tanikoshi

Parts

24



25



26

