



<http://www.canon.com/c-park/en/>

Dharma doll (yellow)

The first Dharma dolls are said to have been made some 300 years ago at the Sorensen Dharma Temple in Takasaki City in Gunma Prefecture, modeled after the Zen monk, Bodhidharma. The eyebrows and beard represent the crane and the turtle, long considered symbols of longevity in Japan, and the dolls are popular as good luck charms.

It is traditional to paint in the left pupil (the right one facing you) when you make a wish, and then paint in the right pupil when the wish comes true.

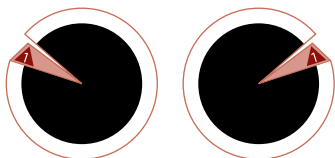
Also, it is said to be most lucky to place the doll so that it faces south.

In Japan, red and white are considered lucky and these are the usual colors for a Dharma doll. There are other dolls with different colors, based on oriental astrology, so you can select the color of the doll based on the nature of your wish and your lucky color, increasing the fun and perhaps the efficacy of the charm.

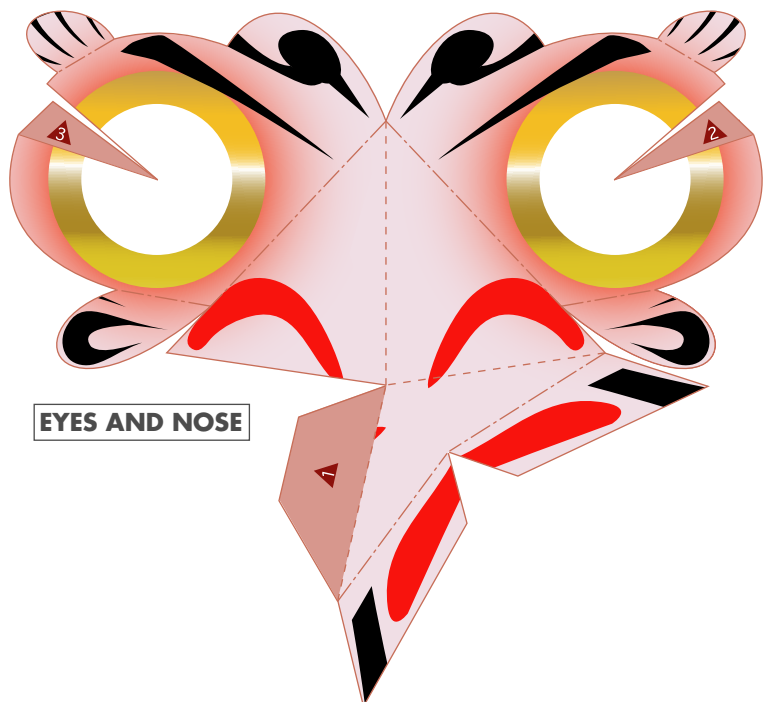
The color yellow is believed to have the power to bring riches and happiness. It is used to bring improve financial and societal fortune.



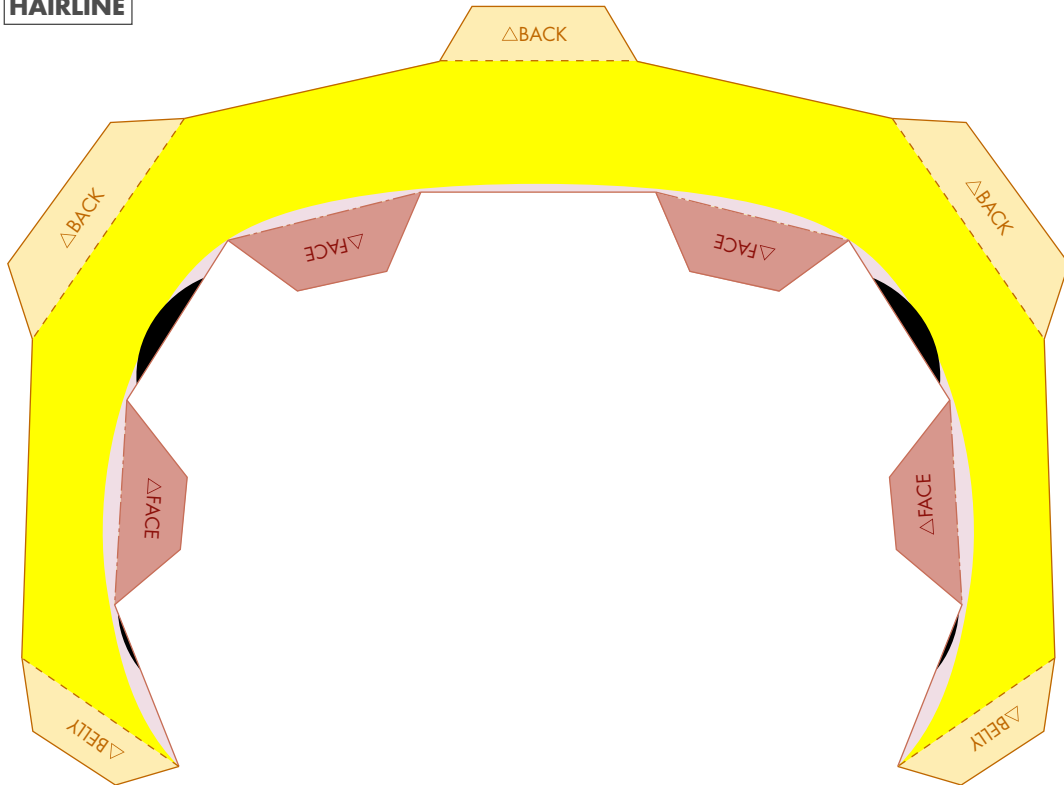
PUPIL



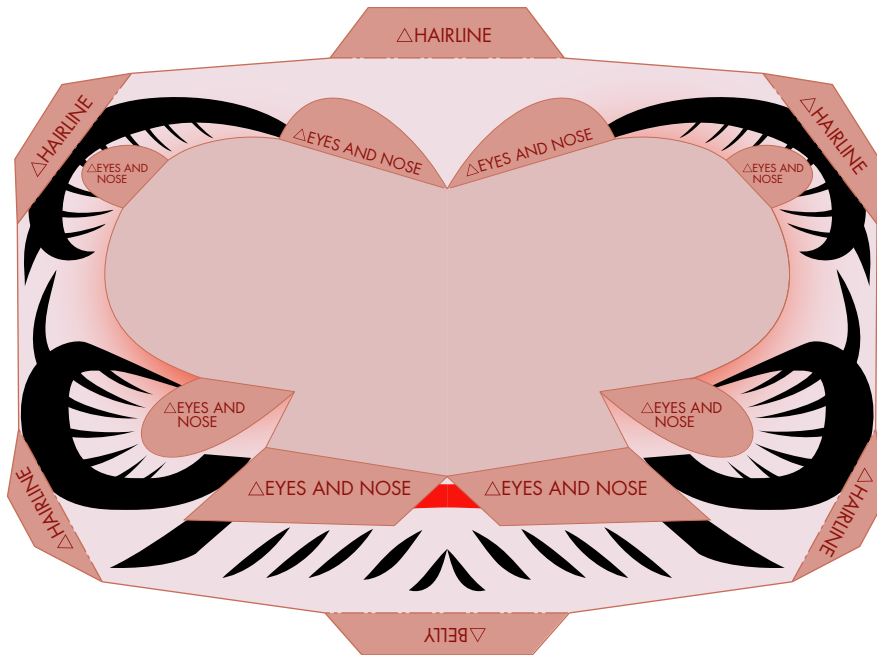
EYES AND NOSE



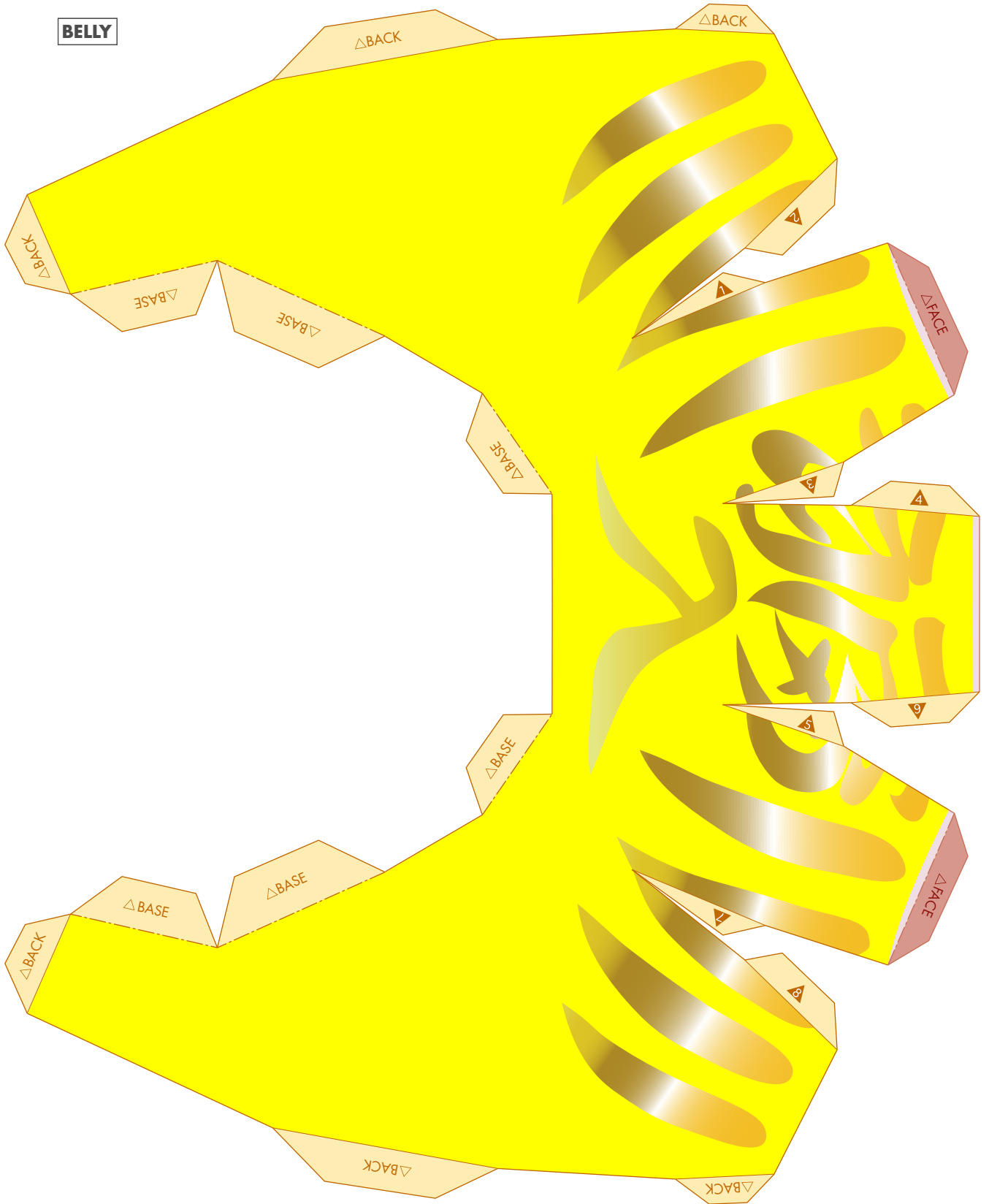
HAIRLINE

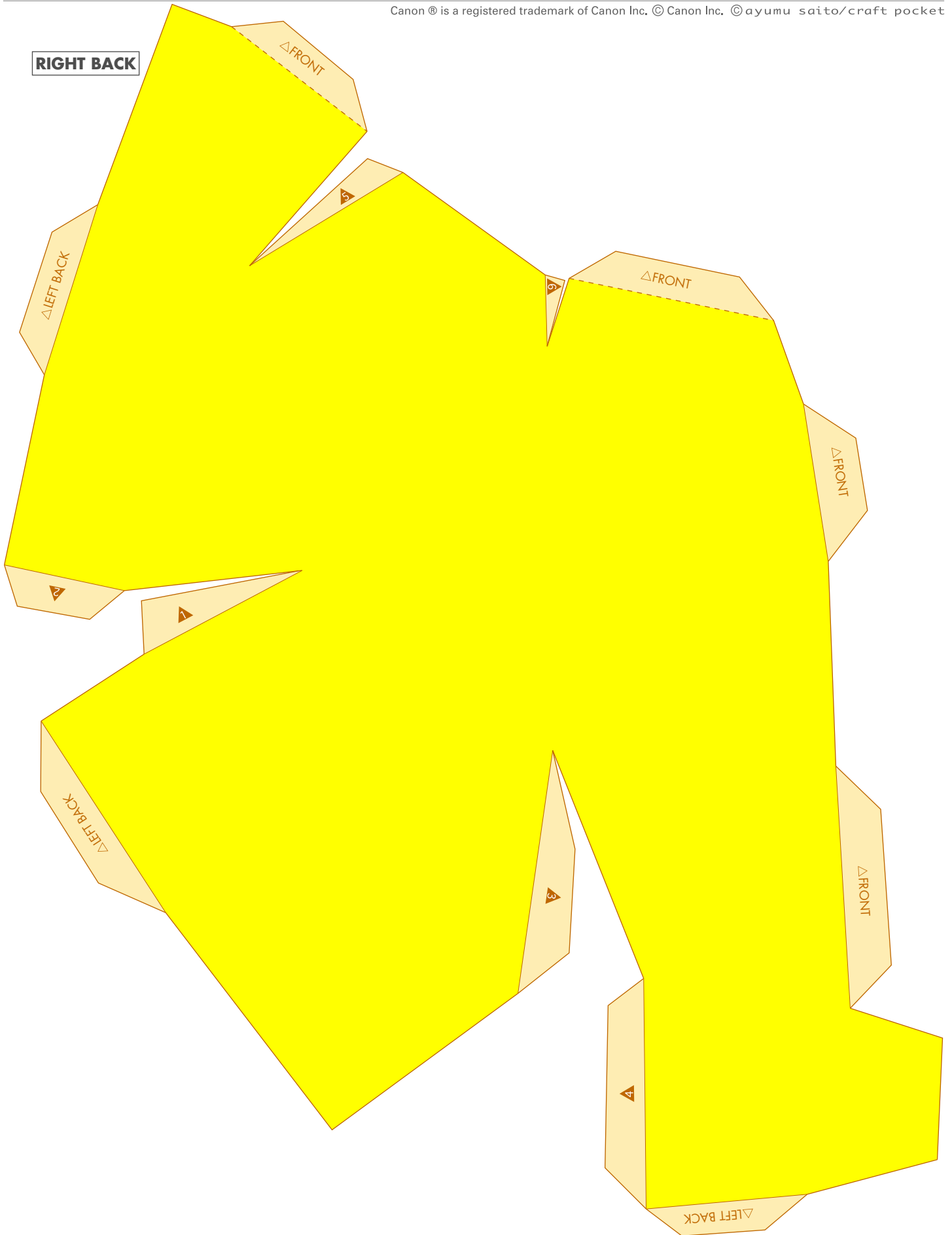


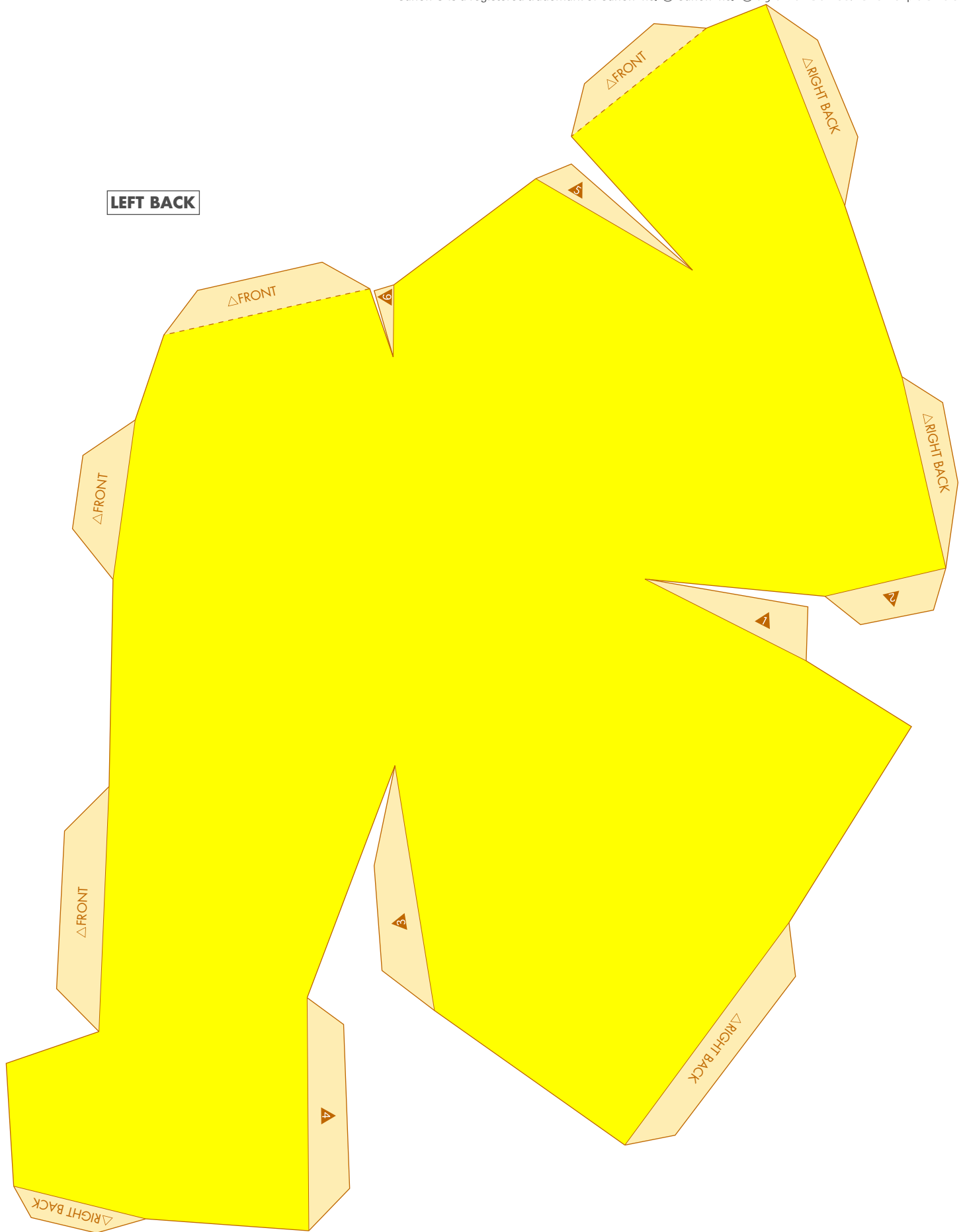
FACE



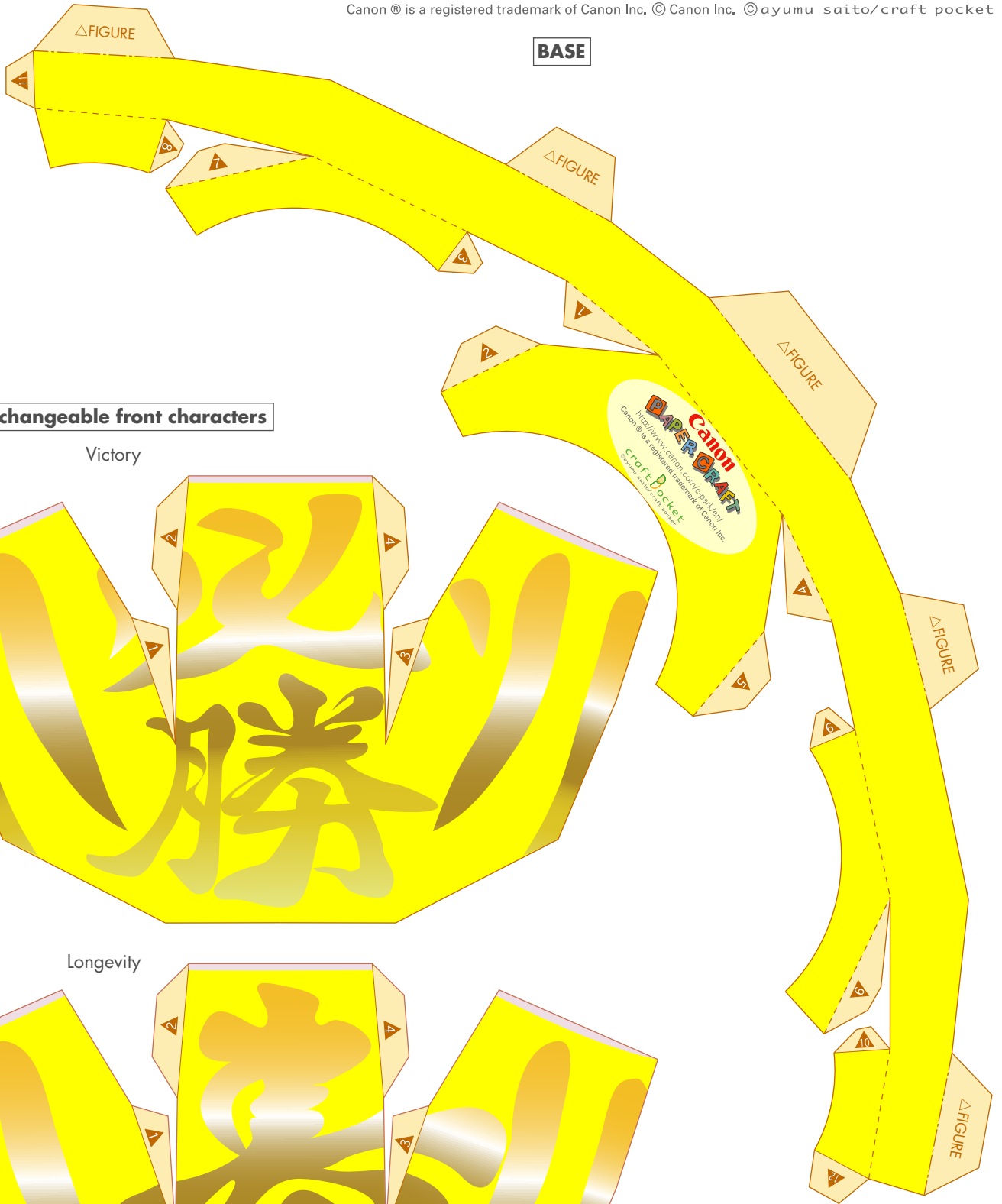
BELLY





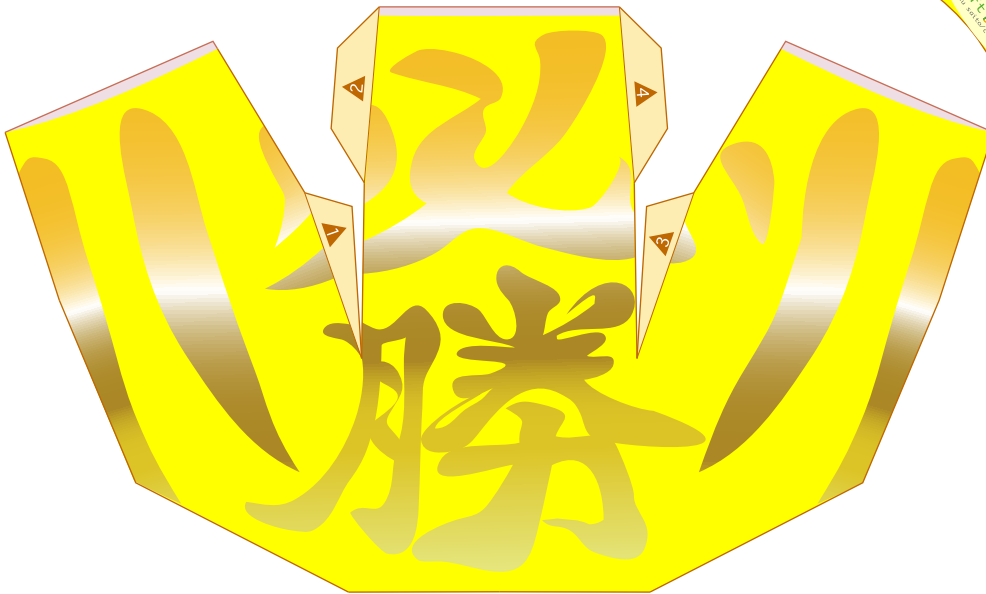


BASE

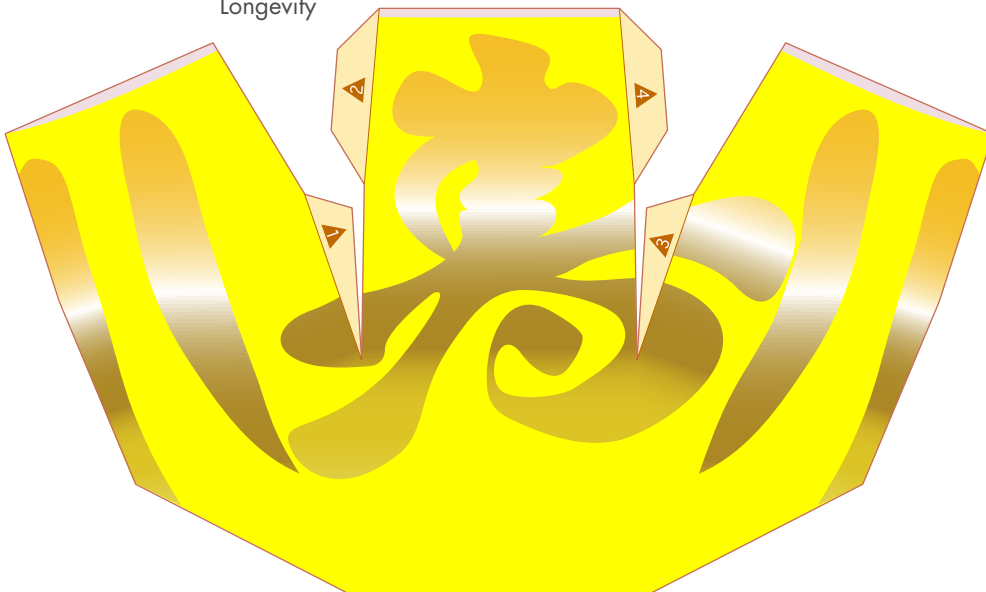


Interchangeable front characters

Victory

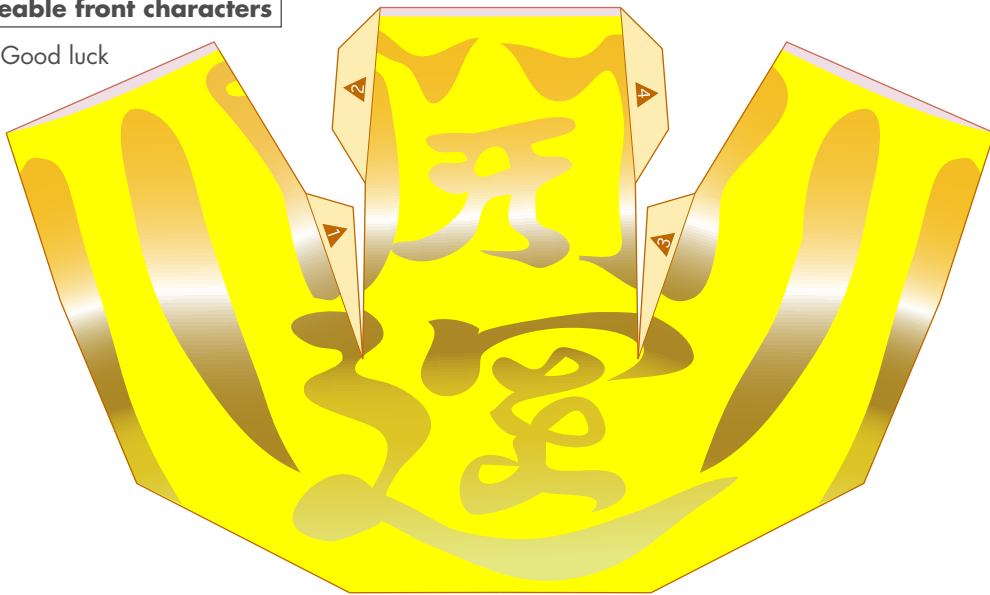


Longevity

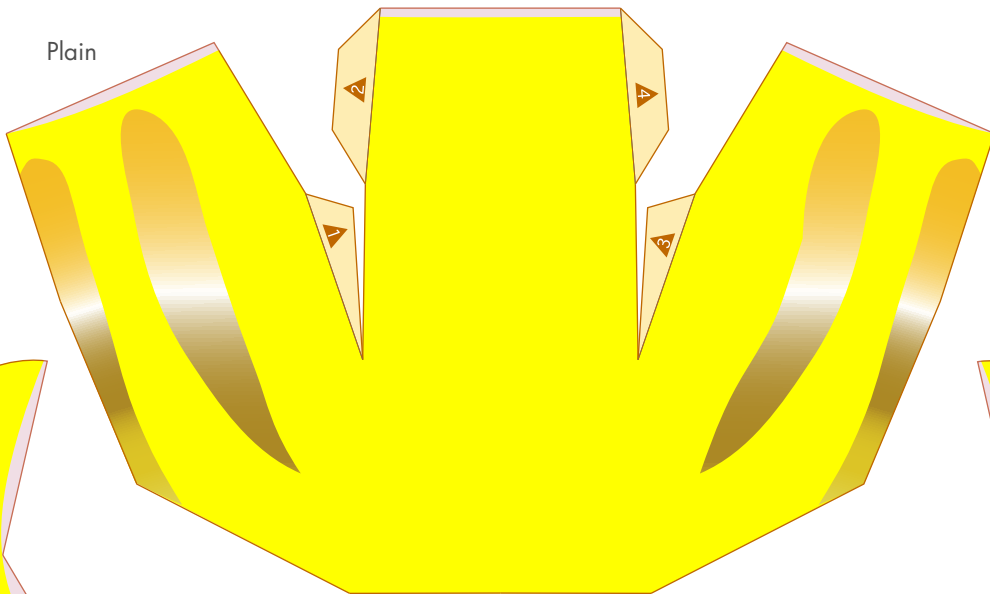


Interchangeable front characters

Good luck



Plain



Interchangeable side characters

Right side : Good fortune and protection from evil

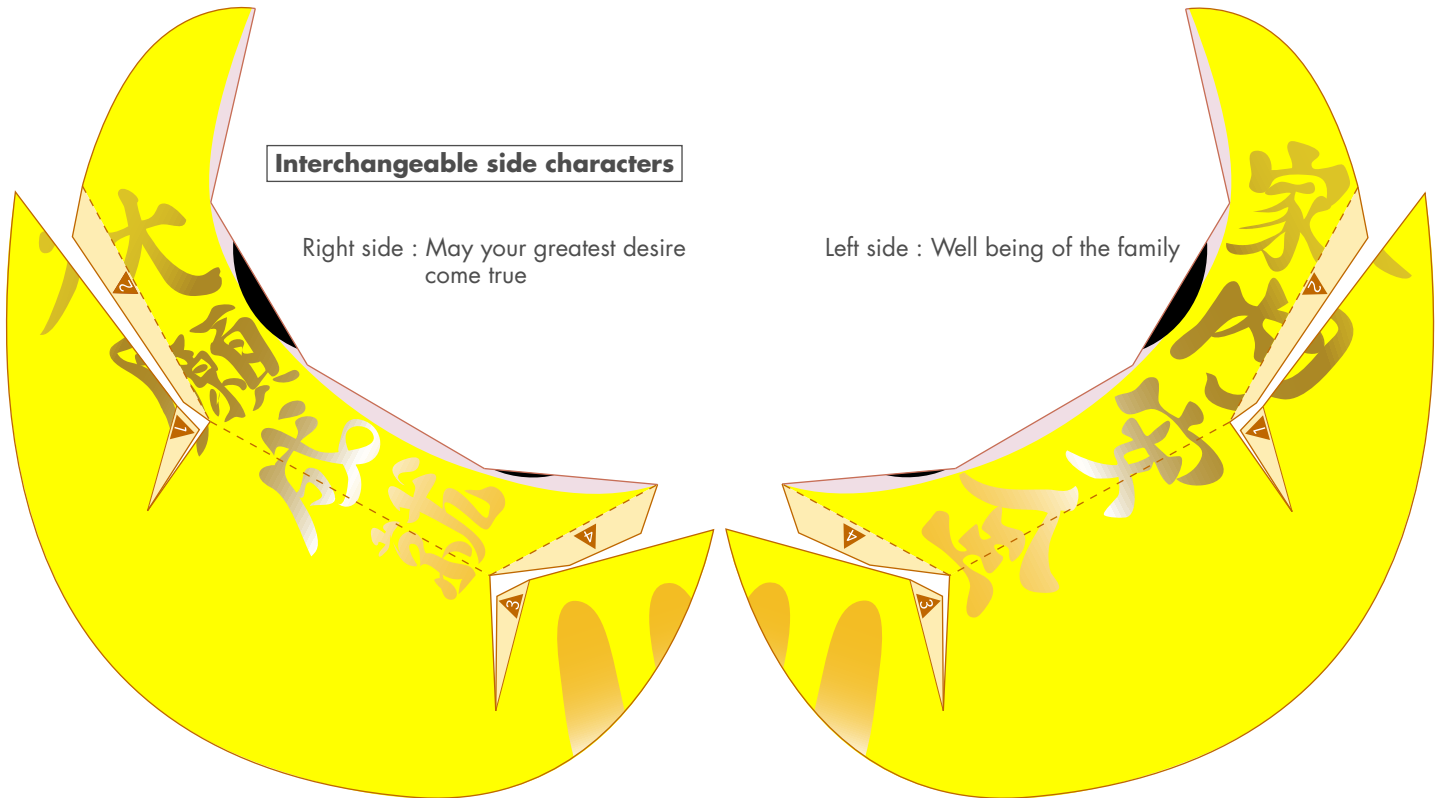
Left side : Perfect health



Interchangeable side characters

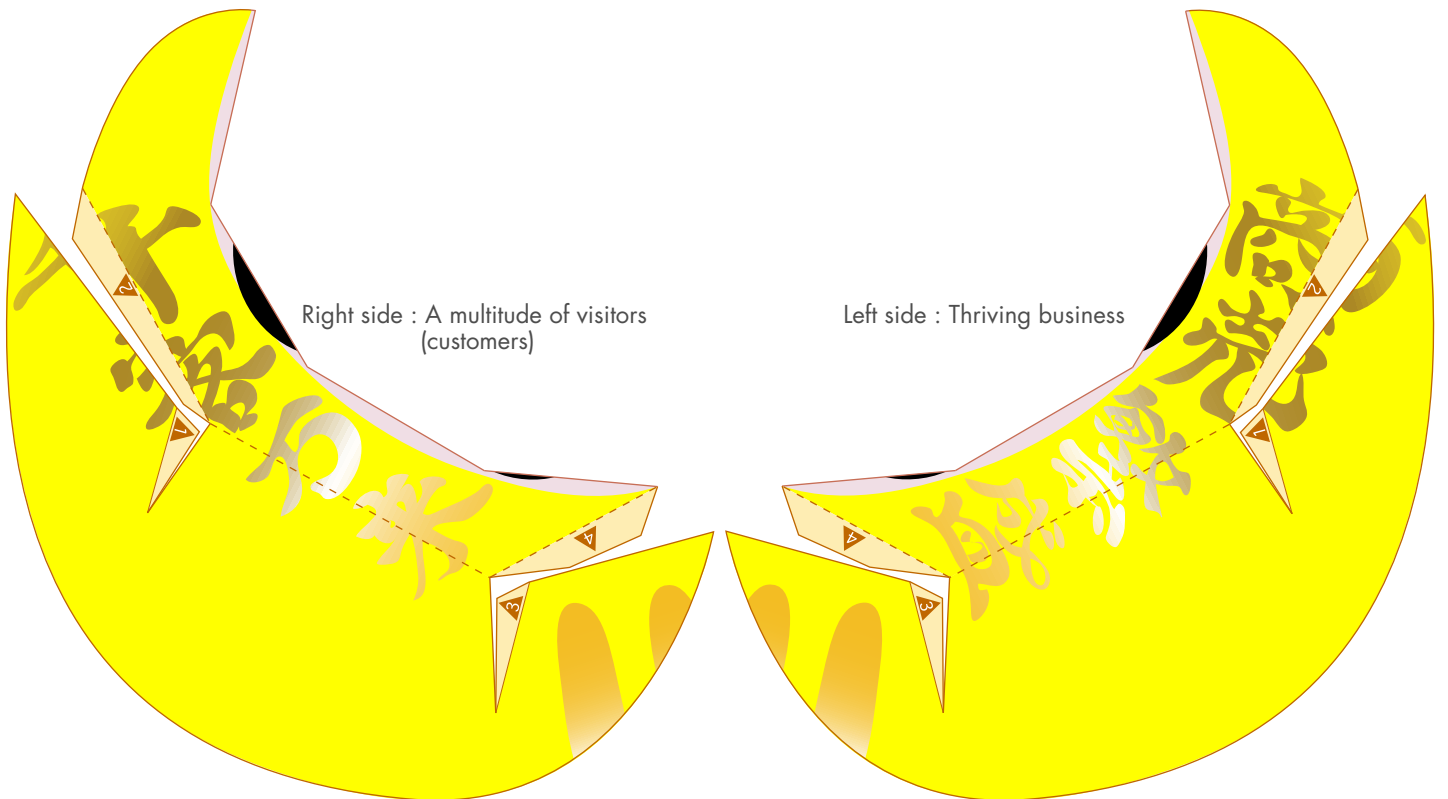
Right side : May your greatest desire
come true

Left side : Well being of the family



Right side : A multitude of visitors
(customers)

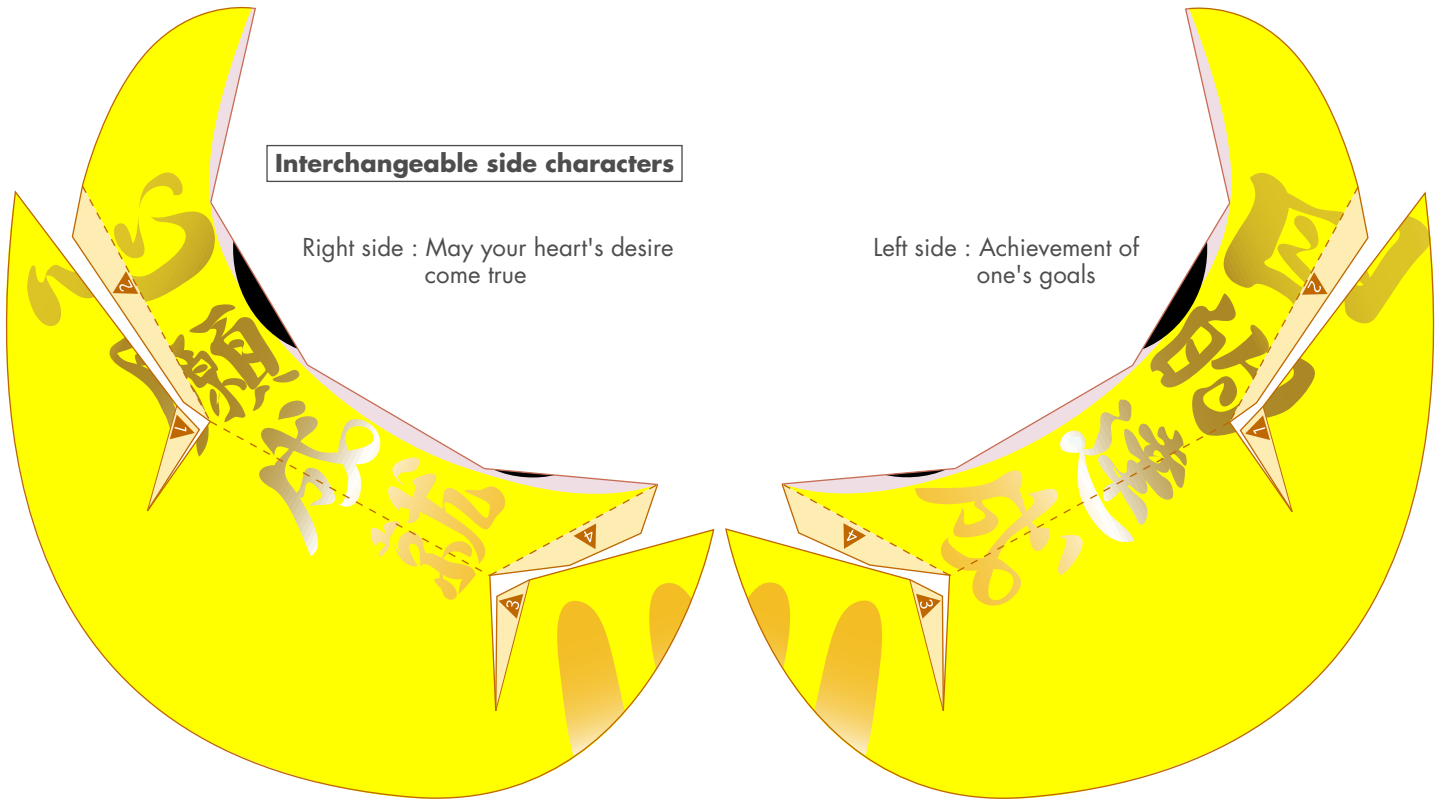
Left side : Thriving business



Interchangeable side characters

Right side : May your heart's desire
come true

Left side : Achievement of
one's goals



Recommended interchangeable parts

Body characters : Good luck

Side characters : A multitude of visitors (customers)
Thriving business