



<http://www.canon.com/c-park/en/>

## Dharma doll (blue)

The first Dharma dolls are said to have been made some 300 years ago at the Sorensen Dharma Temple in Takasaki City in Gunma Prefecture, modeled after the Zen monk, Bodhidharma. The eyebrows and beard represent the crane and the turtle, long considered symbols of longevity in Japan, and the dolls are popular as good luck charms.

It is traditional to paint in the left pupil (the right one facing you) when you make a wish, and then paint in the right pupil when the wish comes true.

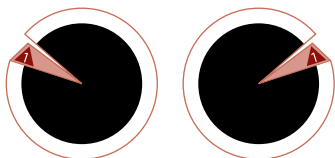
Also, it is said to be most lucky to place the doll so that it faces south.

In Japan, red and white are considered lucky and these are the usual colors for a Dharma doll. There are other dolls with different colors, based on oriental astrology, so you can select the color of the doll based on the nature of your wish and your lucky color, increasing the fun and perhaps the efficacy of the charm.

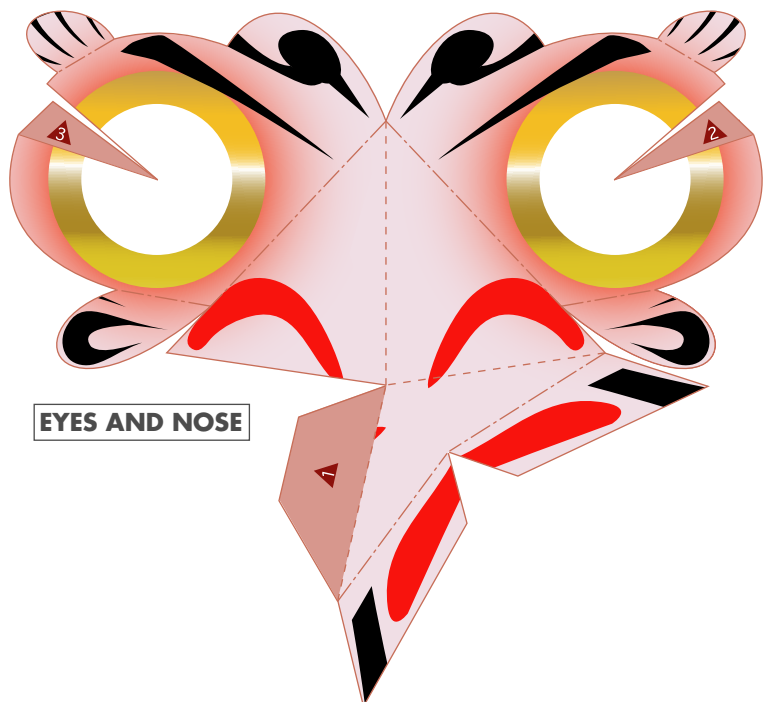
The color blue is believed to have the power to invigorate the spirit. It is used to calm the emotions and to give full rein to one's abilities.



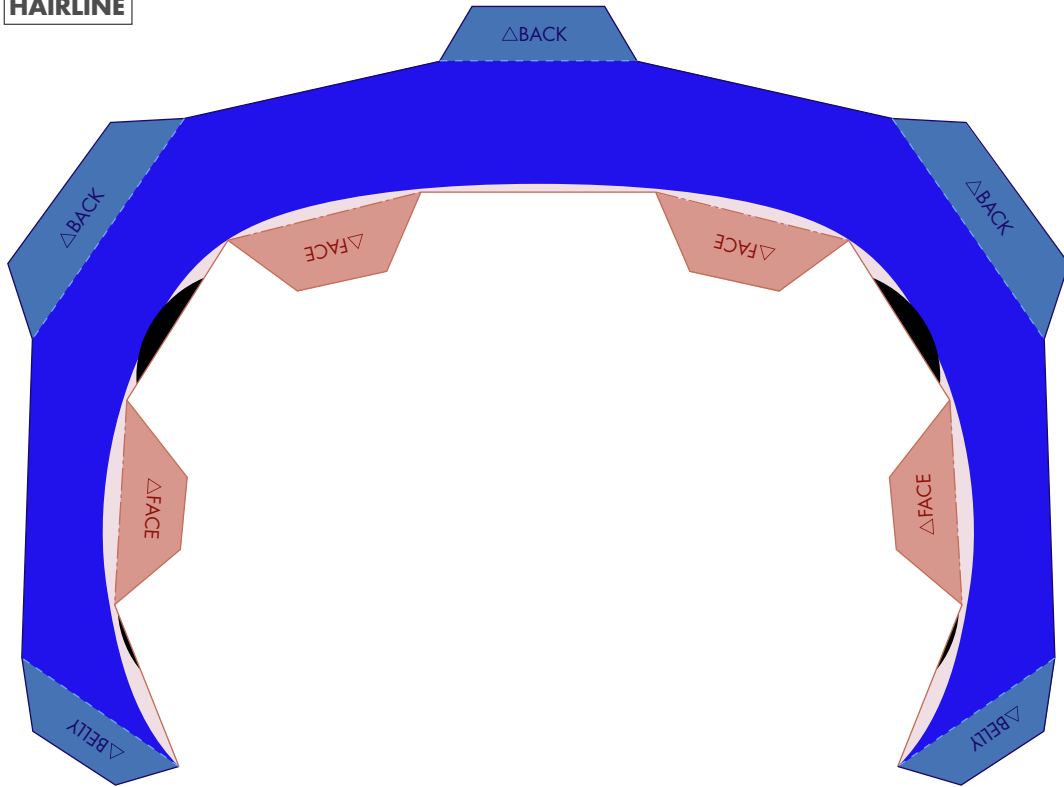
PUPIL



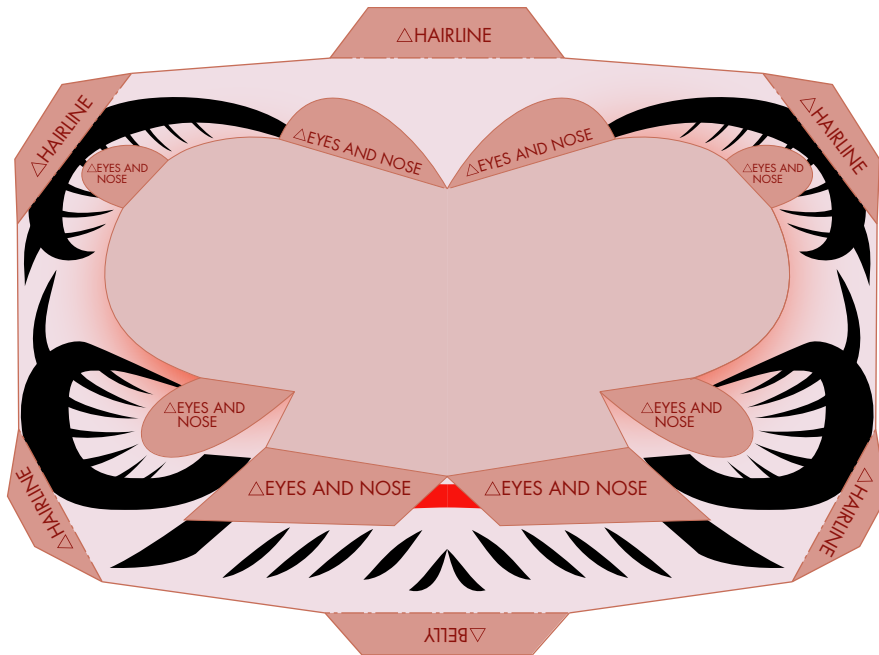
EYES AND NOSE

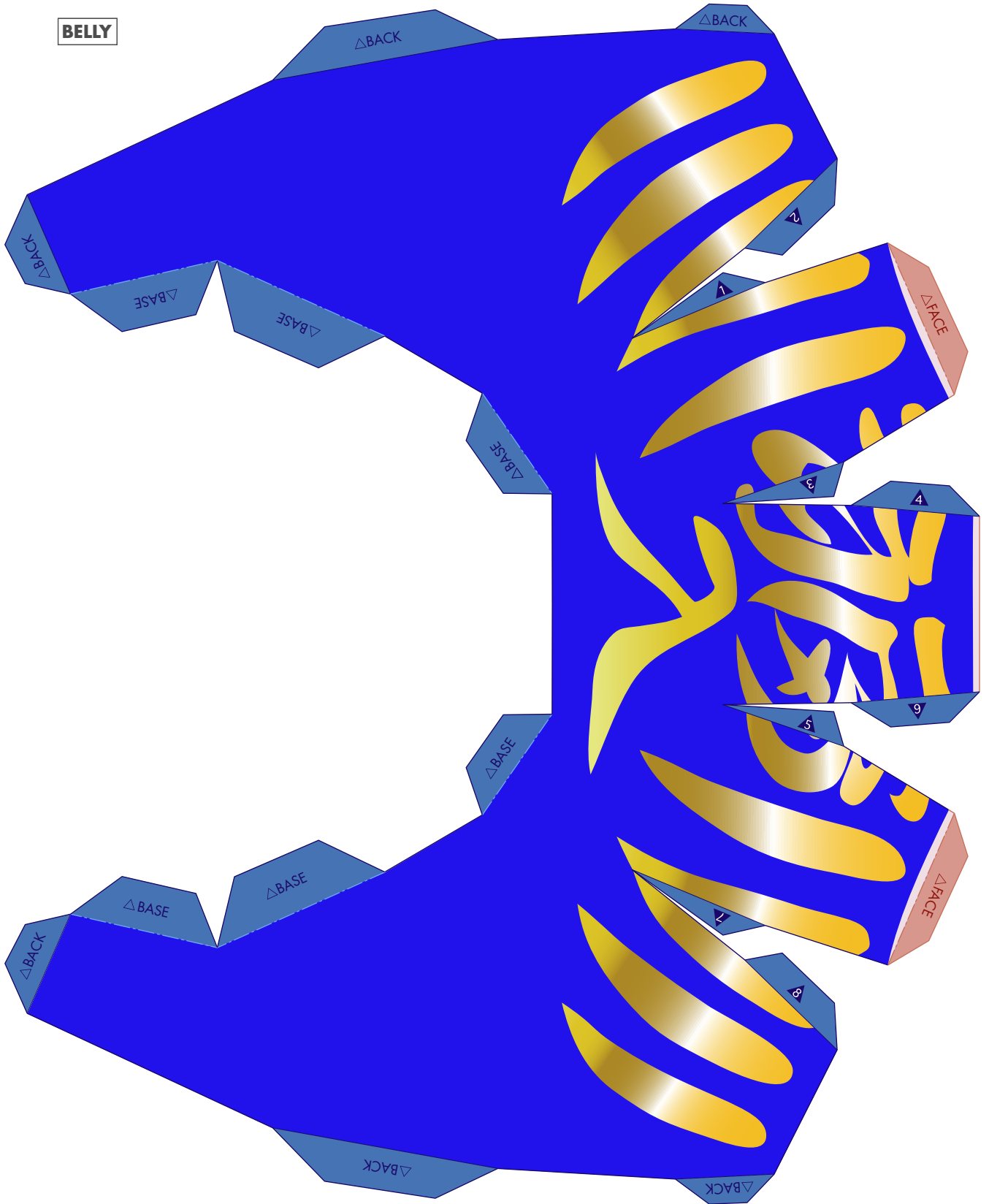


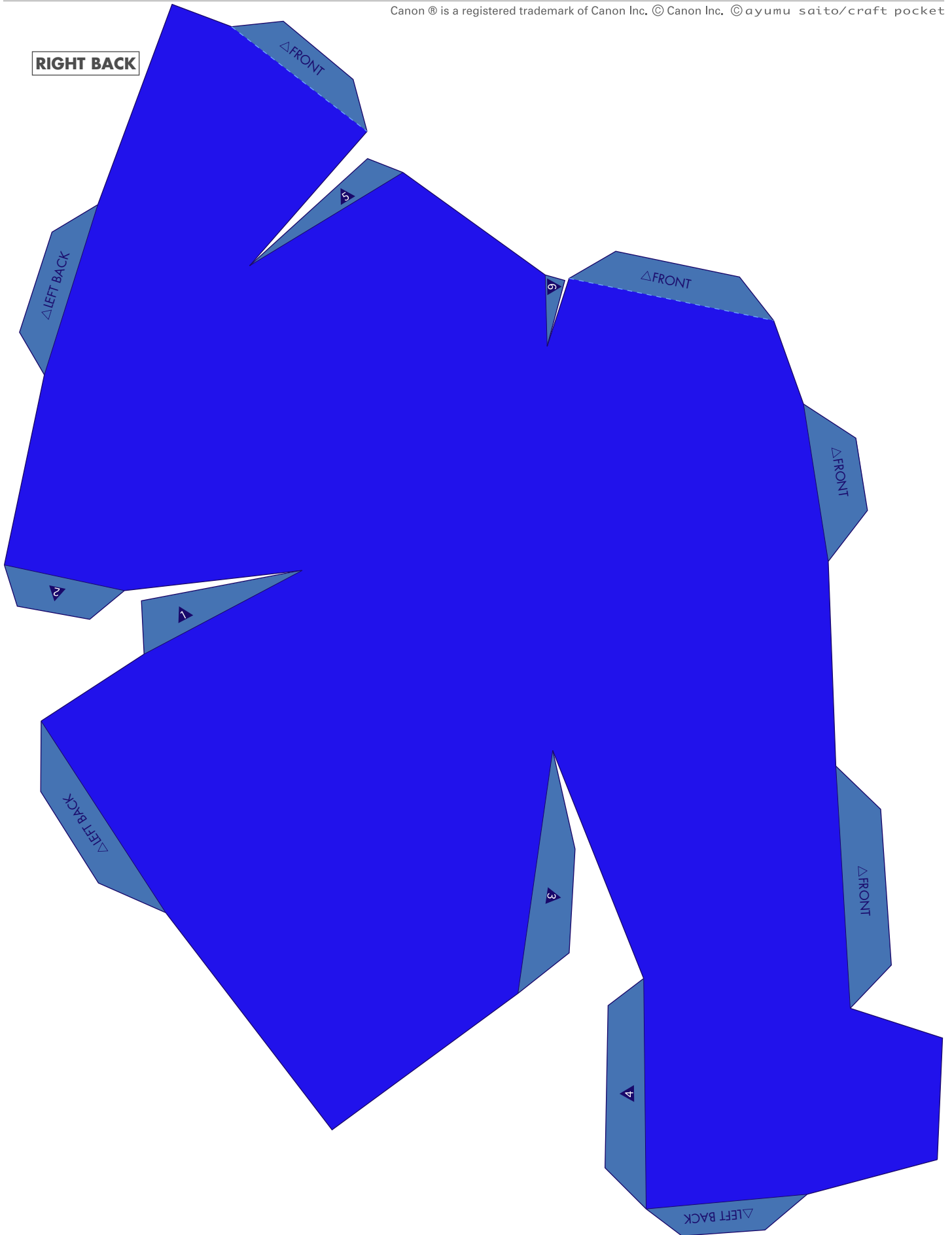
**HAIRLINE**

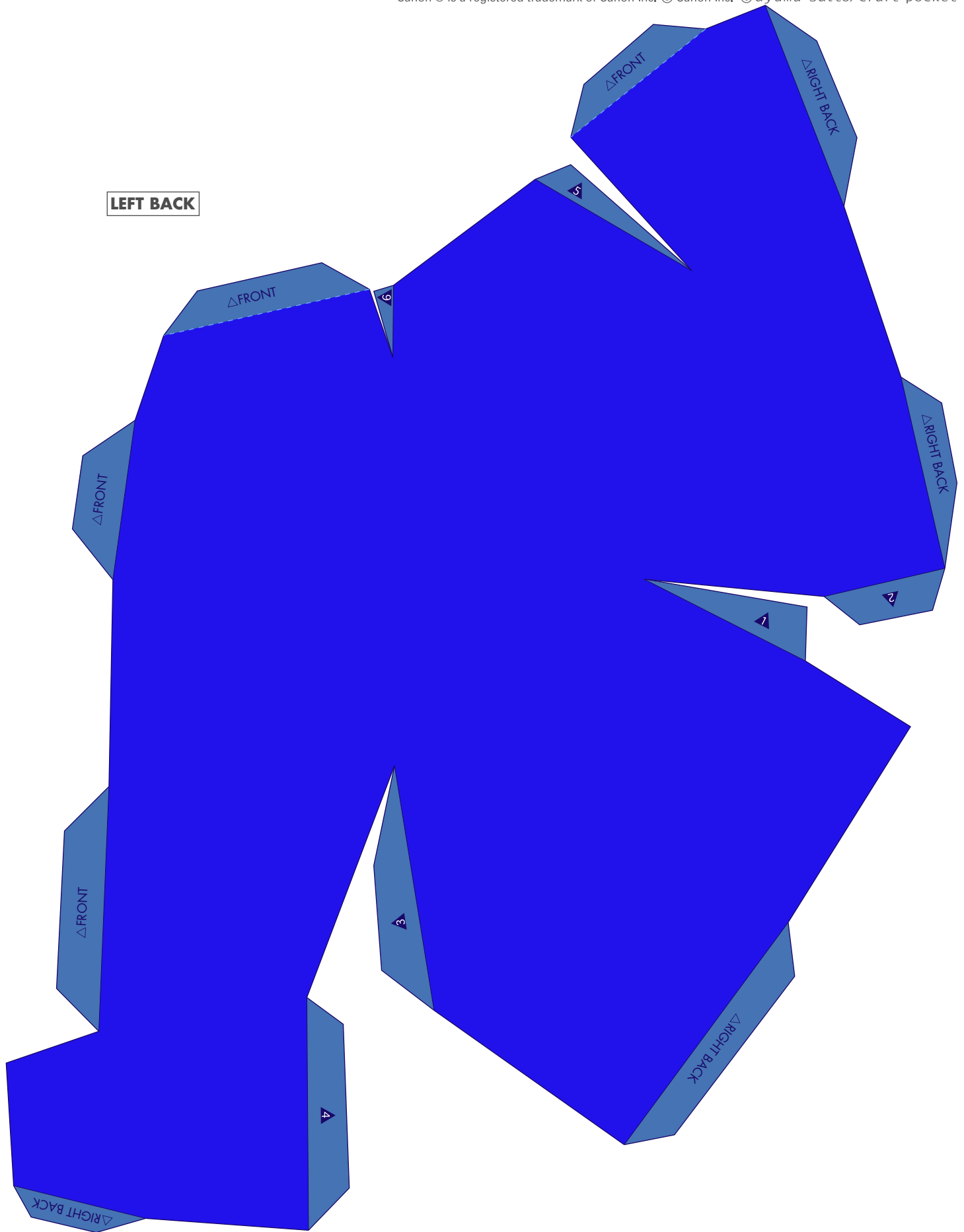


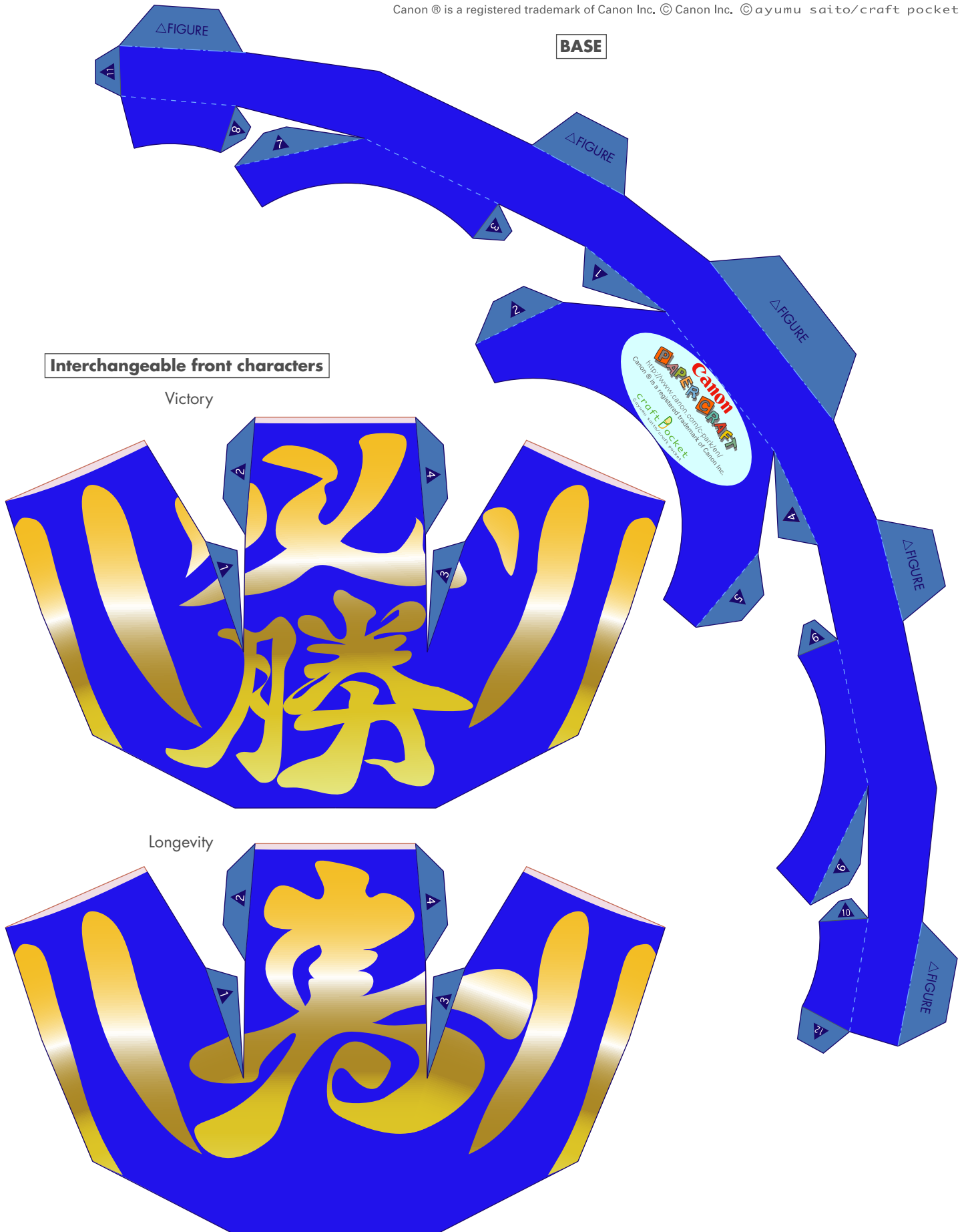
**FACE**





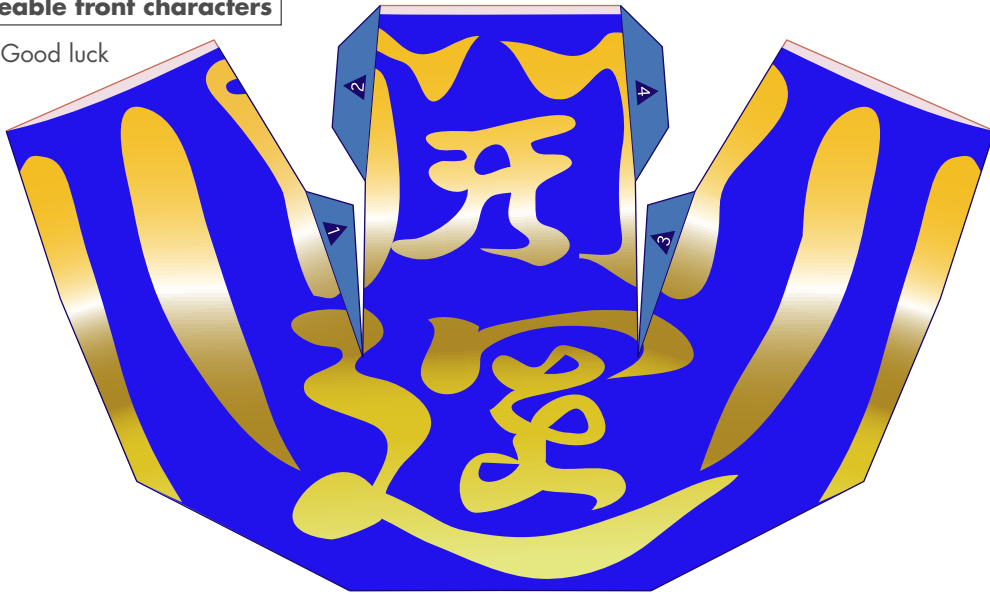




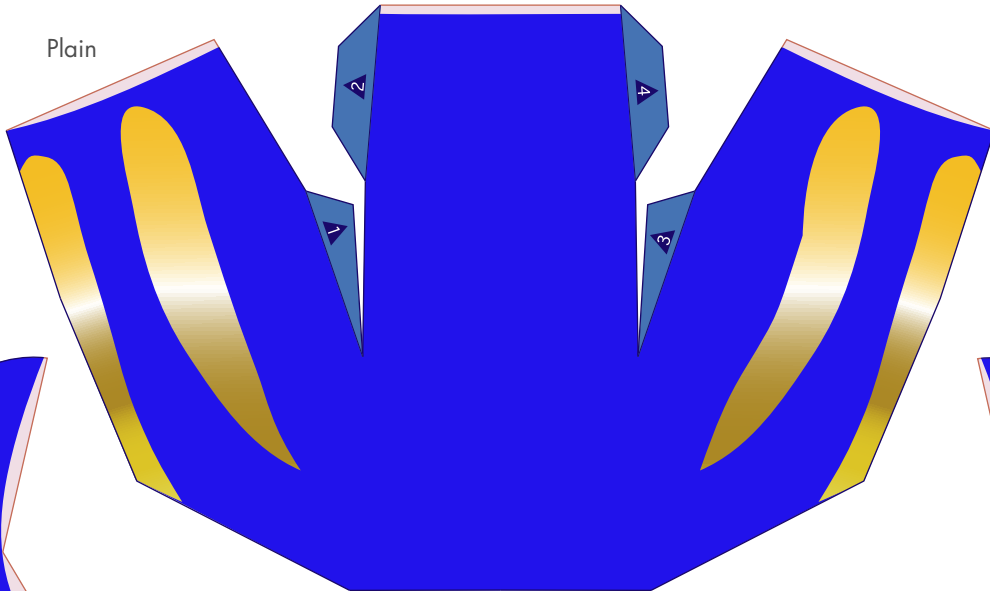


Interchangeable front characters

Good luck



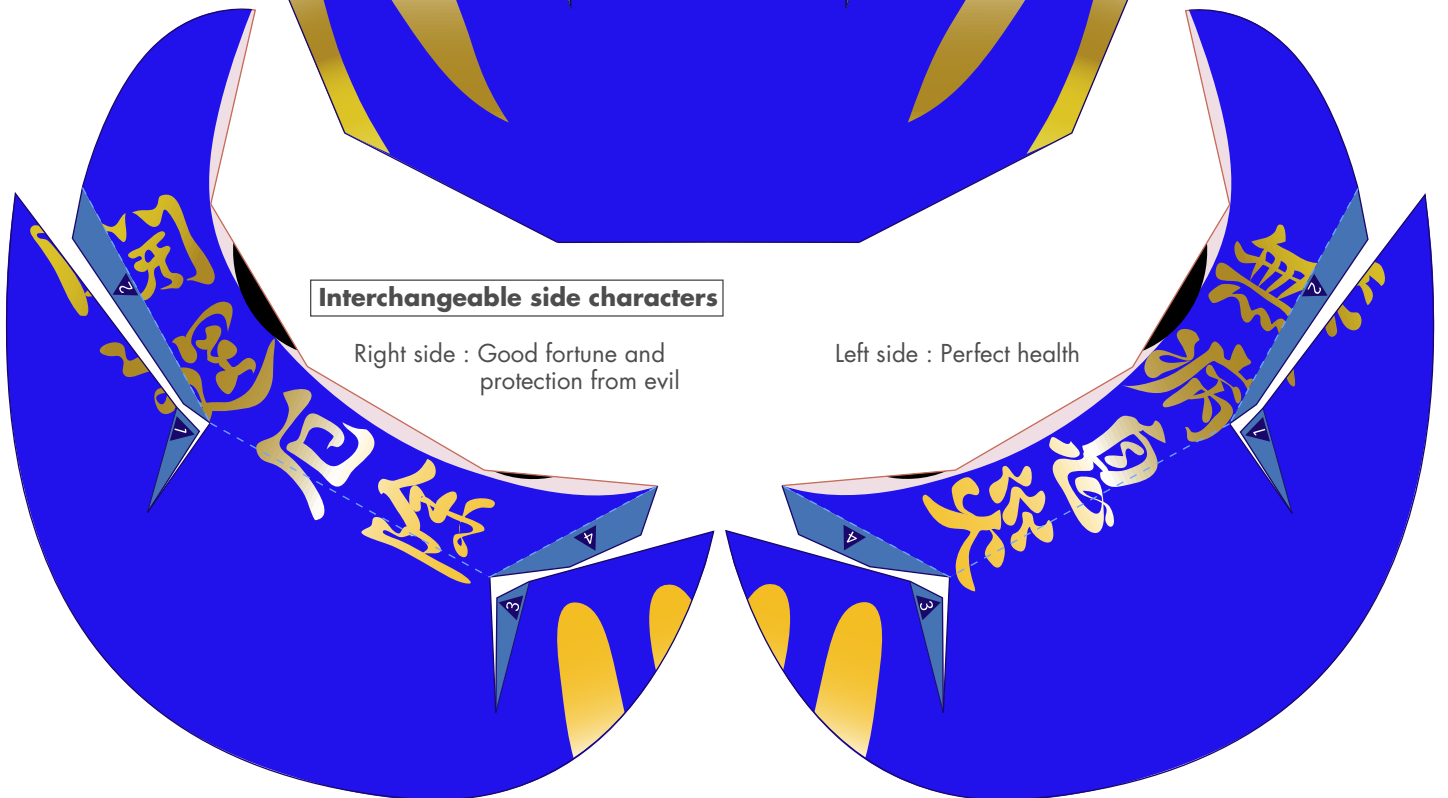
Plain



Interchangeable side characters

Right side : Good fortune and protection from evil

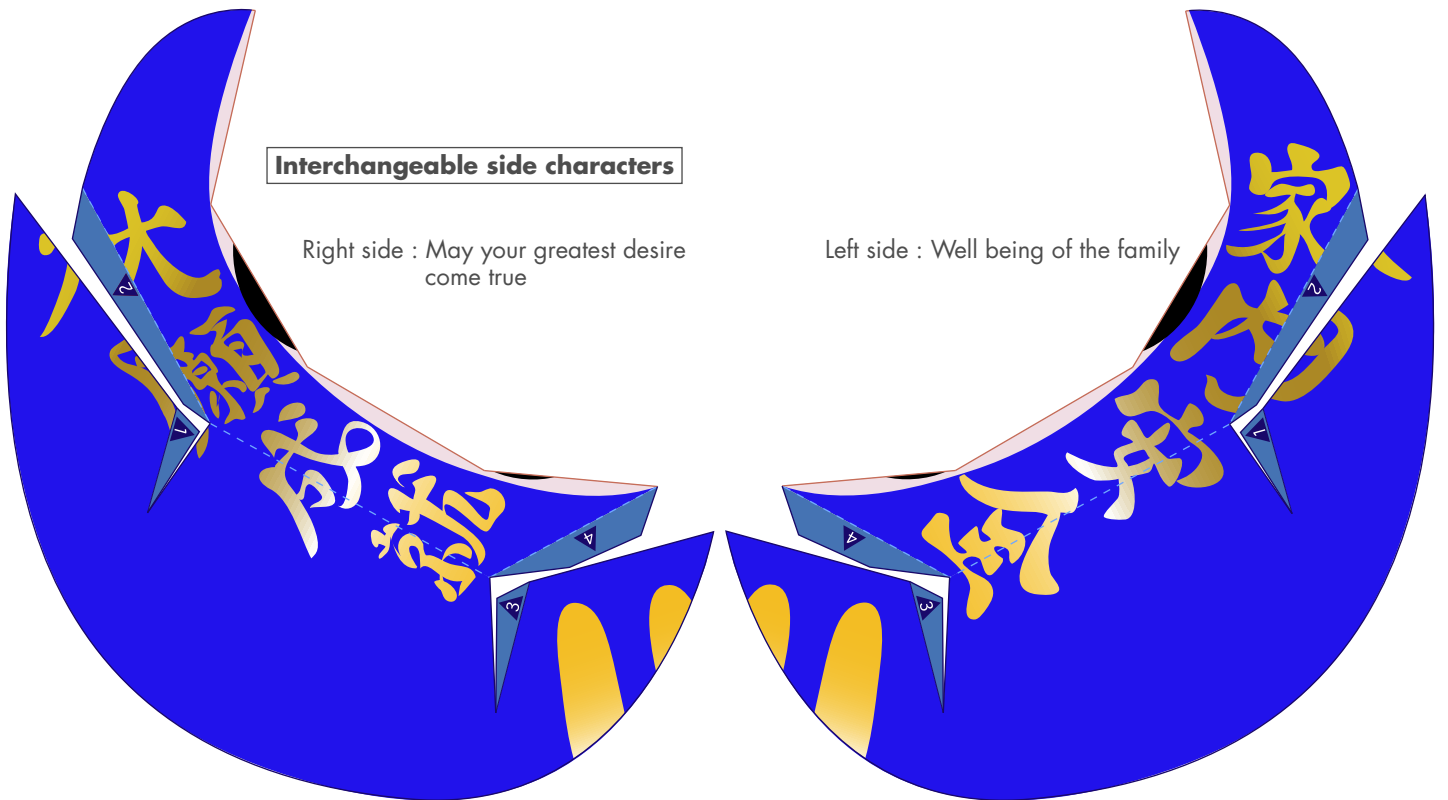
Left side : Perfect health



Interchangeable side characters

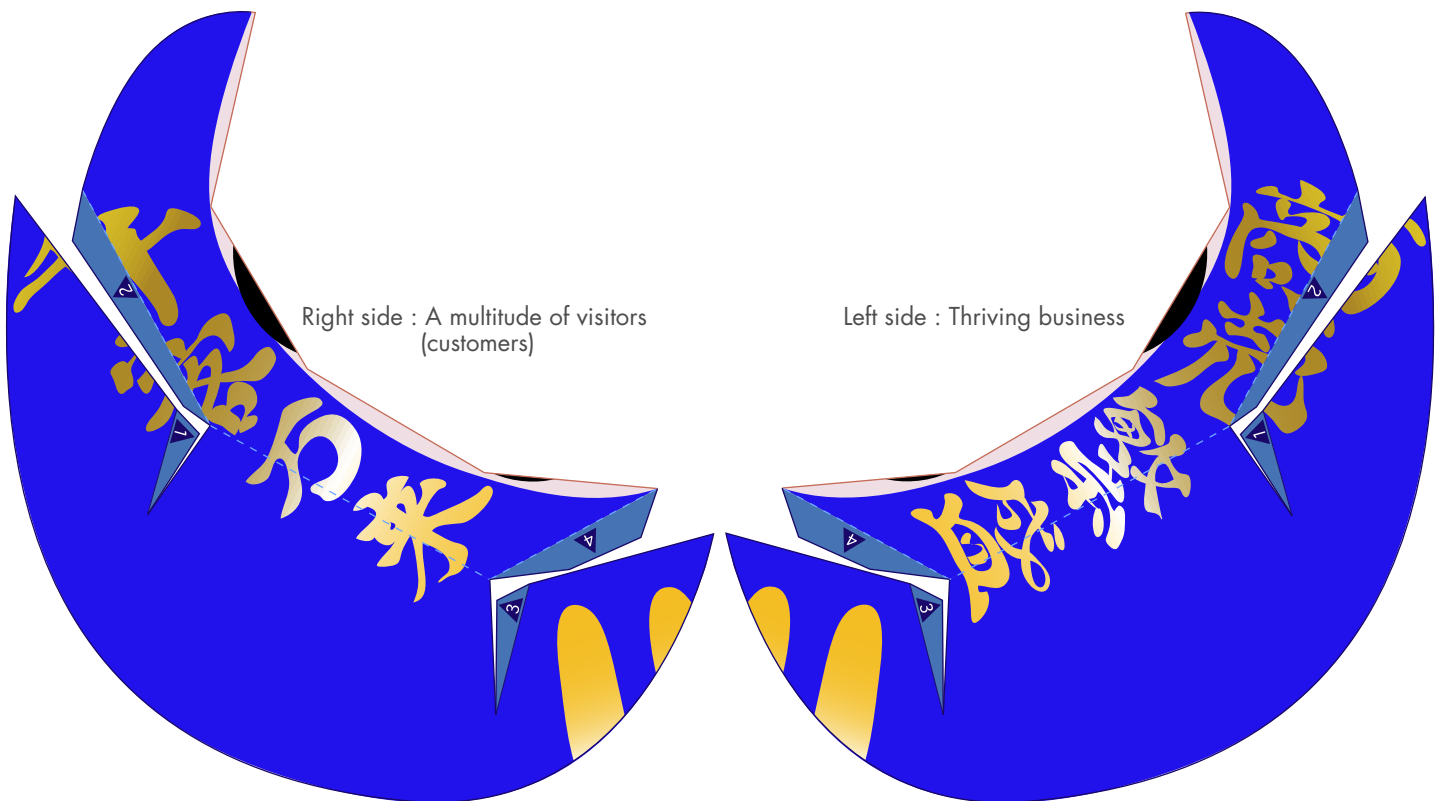
Right side : May your greatest desire  
come true

Left side : Well being of the family



Right side : A multitude of visitors  
(customers)

Left side : Thriving business

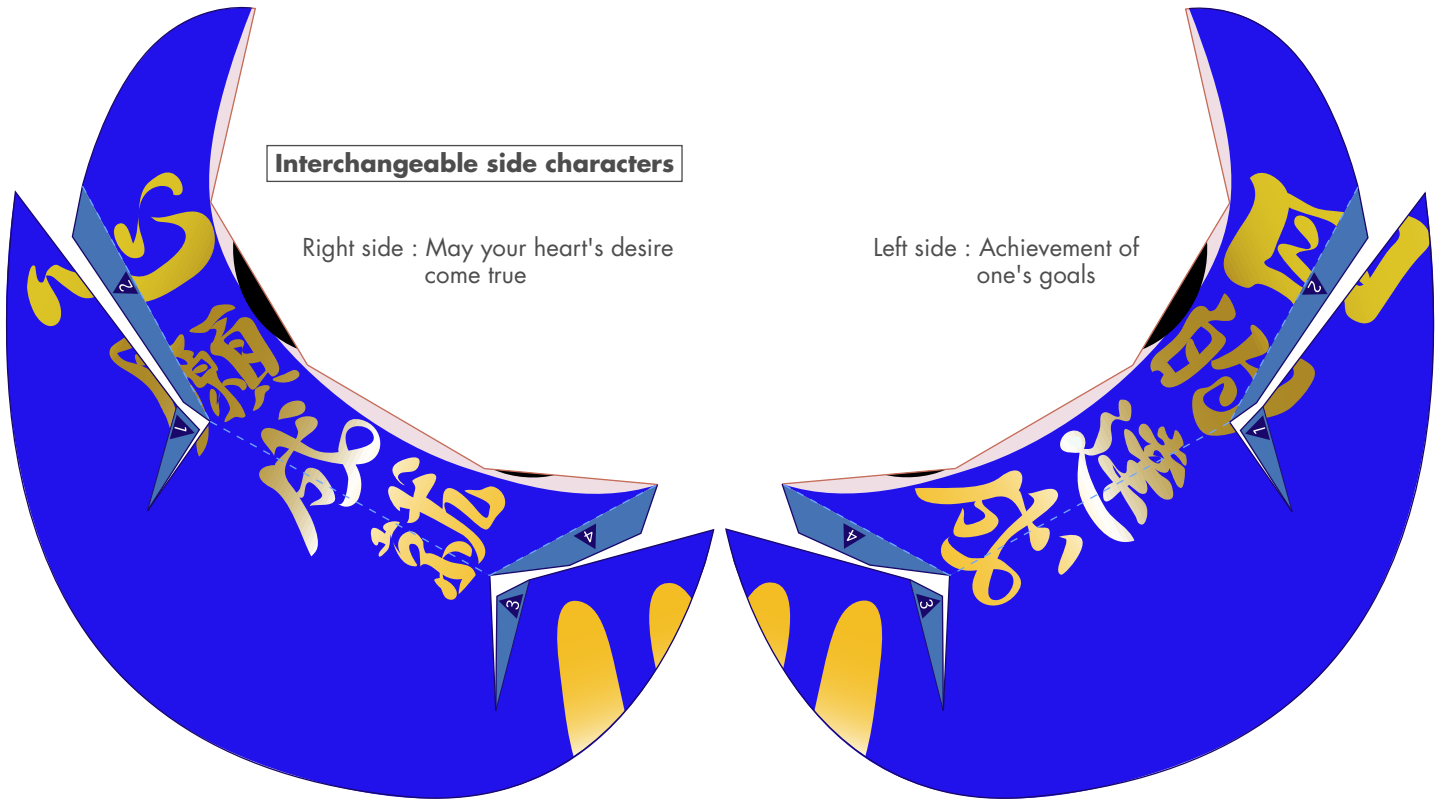




Interchangeable side characters

Right side : May your heart's desire  
come true

Left side : Achievement of  
one's goals



Recommended interchangeable parts

Body characters : Victory

Side characters : May your greatest desire come true  
Achievement of one's goals