

Canon Papercraft Mini-book

Toy Series

Climbing Figures

Hey! How does that work?

Pull alternately on the right and left string, and the climber climbs upward!

Pulling the right string causes the climber's right side to climb, and pulling the left string then causes the left side to climb.

Try experimenting with pulling the strings while looking at the back of the climber. You'll soon figure out the mechanism that allows it to climb.



* Cut out the card above and save it. You can collect the cards from each of the Papercraft projects to make your own mini-book!

★ How to use the climber

Hang the castle from a pin or nail in a wall.
Hold one end of the string in each hand.
Alternately pull outward on the right and left ends of the string, and the climber will climb upward.

★ Directions

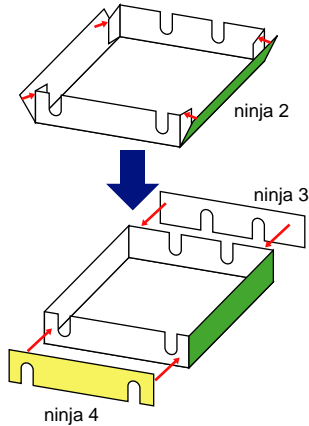
Print out Page 1 through Page 3. Cut out all the parts, and fold along the fold lines.

★ Items needed:

One 10 cm (four-inch) and One 2 m (six-foot) length of kite string or kitchen string

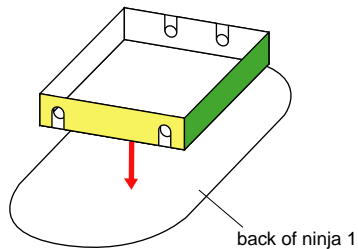
1. Build the box

glue together as shown in the figure
* the rock climber is built in the same manner



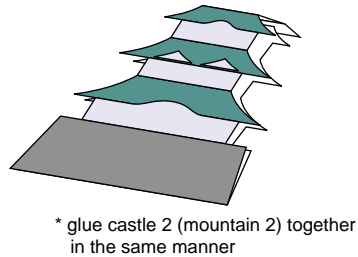
2. Attach the climber figure

Make sure to get the top and bottom aligned correctly
* the rock climber is built in the same manner



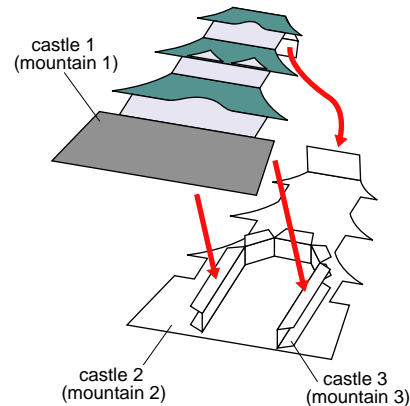
3. Build the castle (mountain)

Fold castle 1 (mountain 1) in half and glue together
* the mountain 1 part for the rock climber model is glued in the same manner



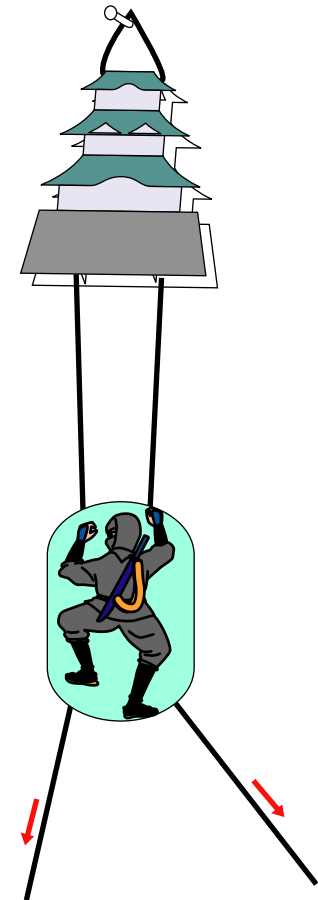
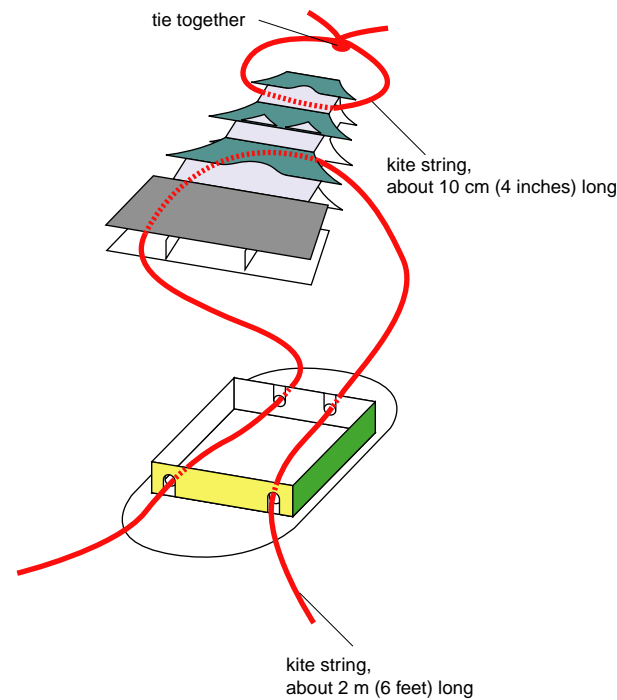
* glue castle 2 (mountain 2) together in the same manner

glue together as shown in the figure



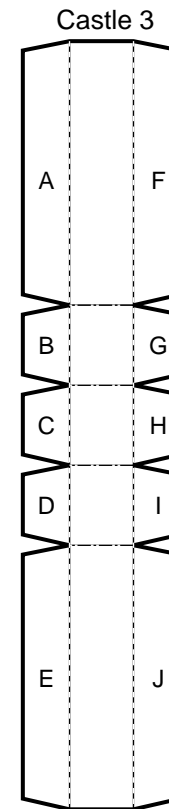
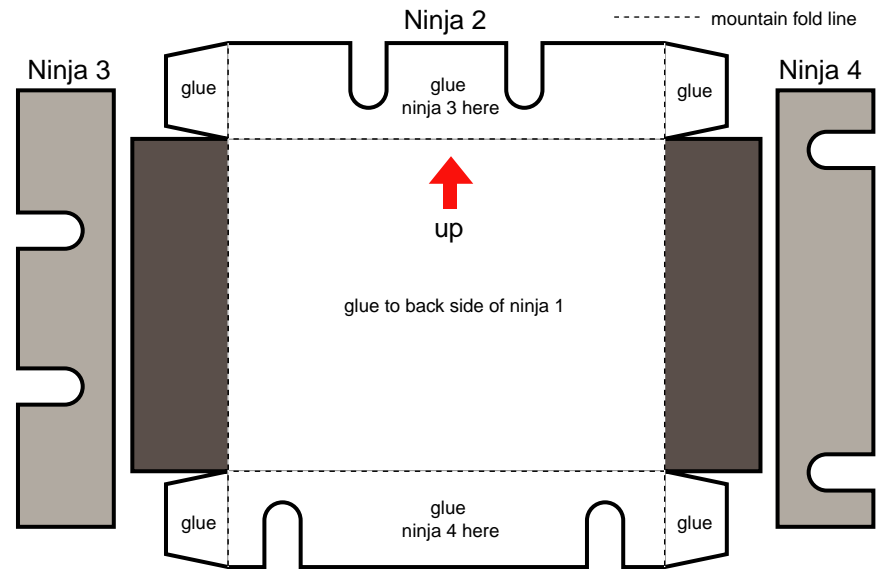
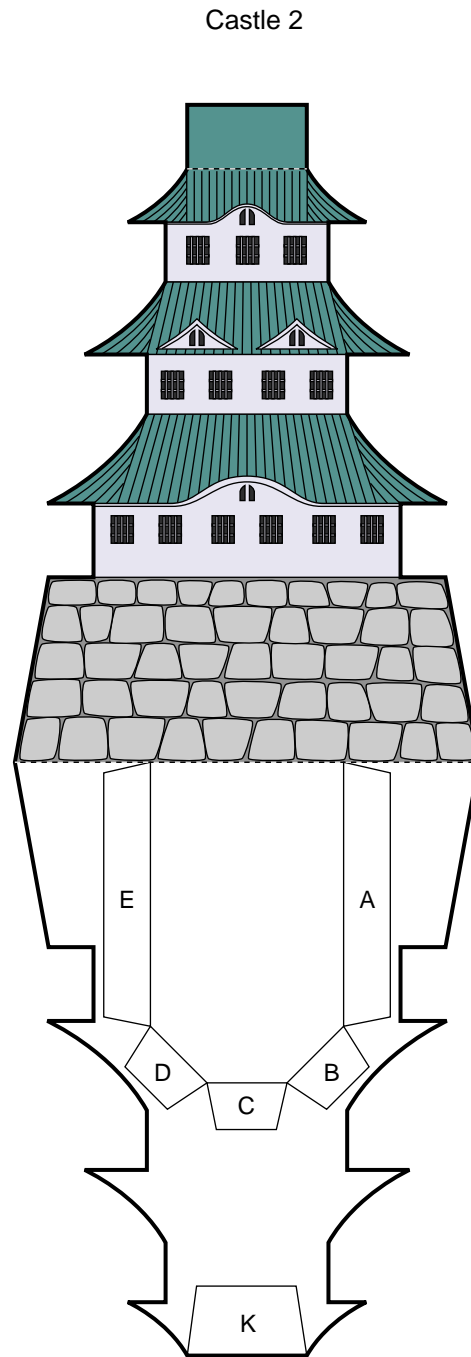
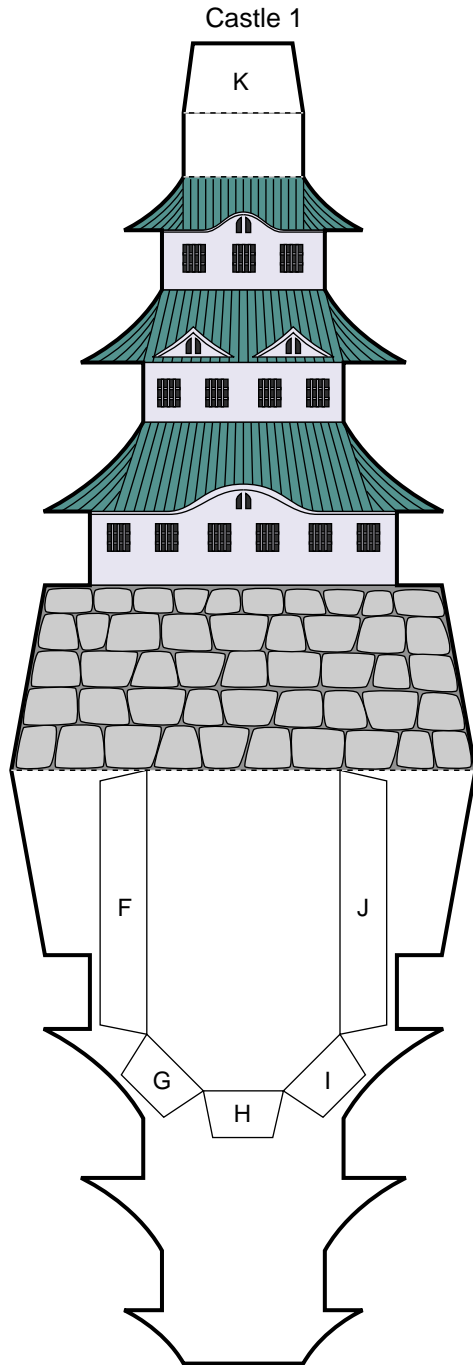
4. Add the string

pass the two pieces of string through the model as shown in the figure

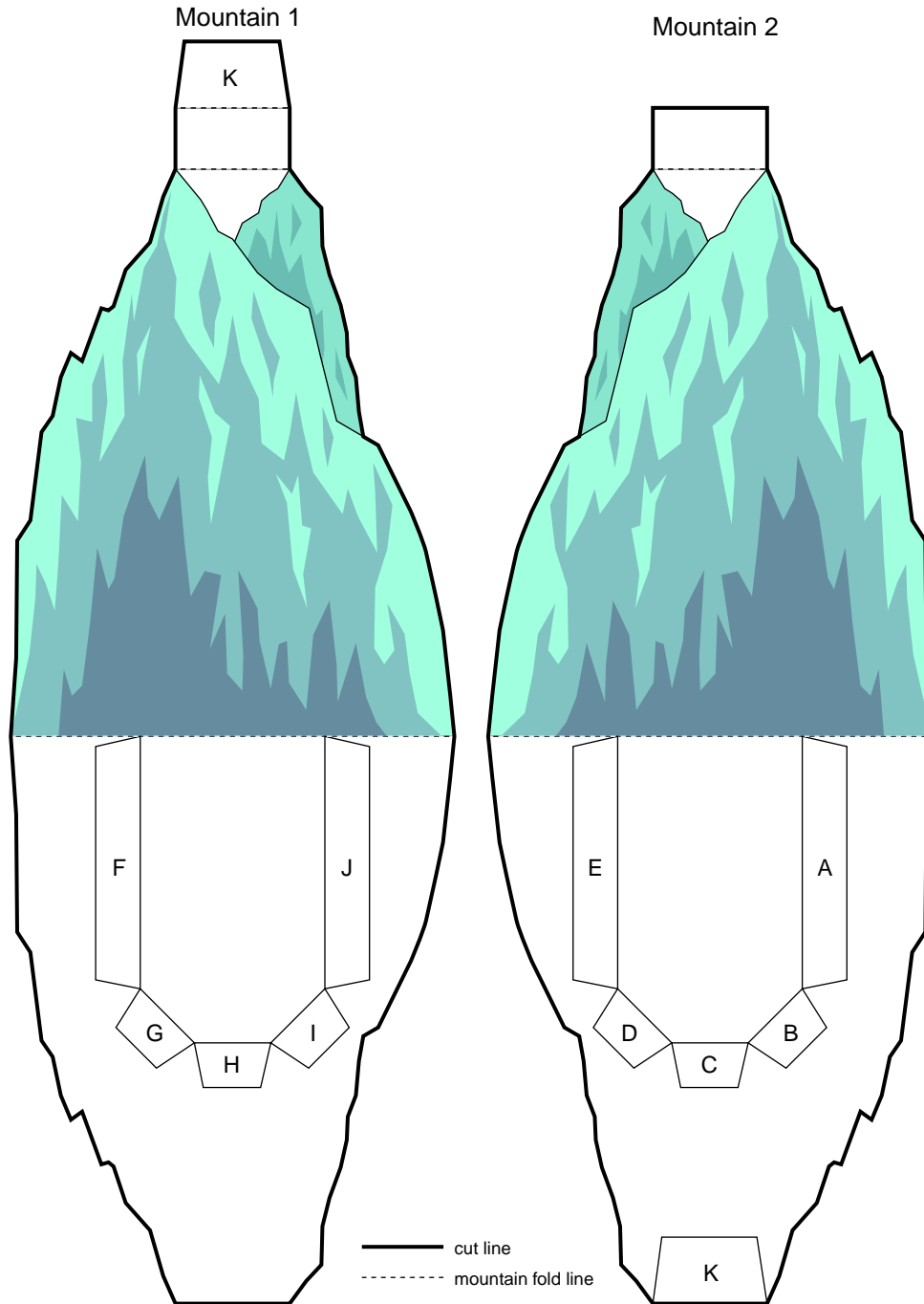


Ninja Model

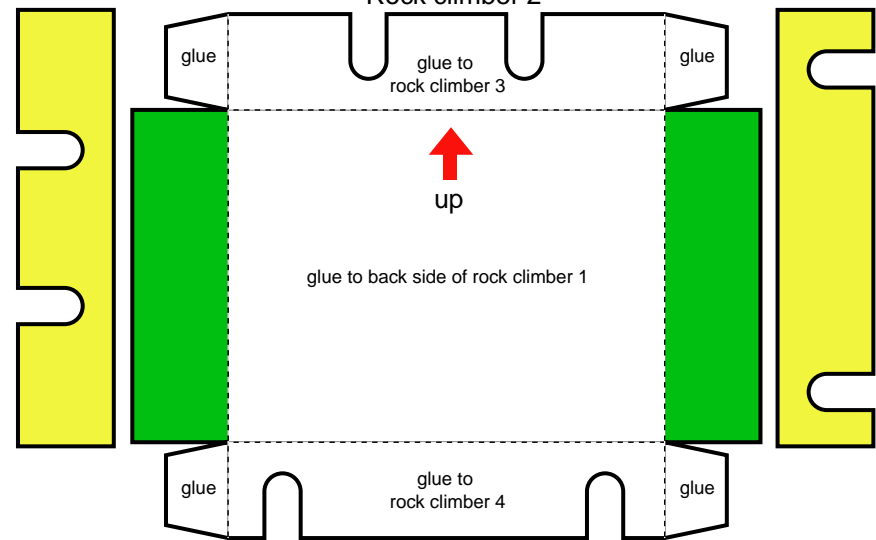
— cut line
 - - - mountain fold line



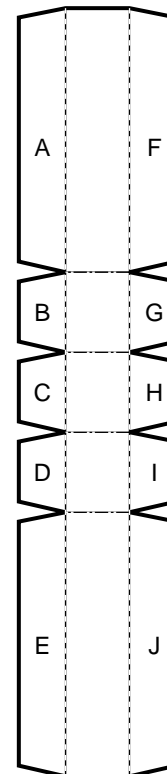
Rock Climber Model



Rock climber 3 Rock climber 2 Rock climber 4



Mountain 3



Rock climber 1

