

PAPER CRAFT

<http://www.canon.com/c-park/en/>



Assembly Instructions

Tools

Scissors, glue, ruler, tweezers, pencil



[Caution] Glue, scissors and other tools may be dangerous to young children so be sure to keep them out of the reach of young children.



Mountain fold (dotted line)
Make a mountain fold.



Valley fold (dashed and dotted line)
Make a valley fold.



Cut line (solid line)
Cut along the line.



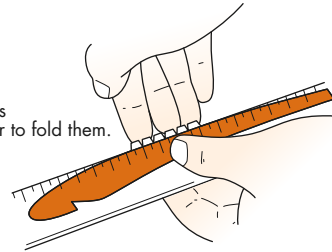
Cut in line (solid line)
Cut along the line.

Points to note when making the glider

1. Try to avoid bending the parts when you cut them out.

2.

Align the parts against a ruler to fold them.

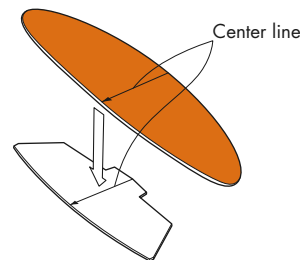


If any of the cut out parts are bent, this will seriously affect the glider's performance. Therefore, be sure to keep all parts perfectly flat till you join them up. For the wings, stabilizer and other parts, use a ruler to give you a proper straight edge to make your folds.

3. When assembling the parts, follow the assembly instructions and use the parts in the order given.

4. When sticking surfaces together, spread the glue evenly and stick the parts together quickly and line up the edges cleanly. While the glue is drying, put the fuselage inside a sheet of paper and then press it down with a book or similar in order to get a nice, straight finish.

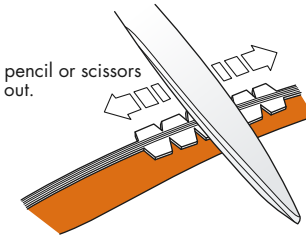
5.



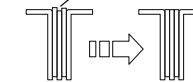
When sticking the right and left wings together, make sure that the center line is not off center.

6.

Rub with pencil or scissors to flatten out.



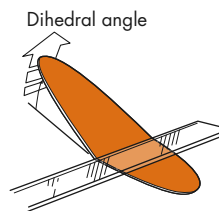
Flatten the uneven surface.



Cross section of the fuselage

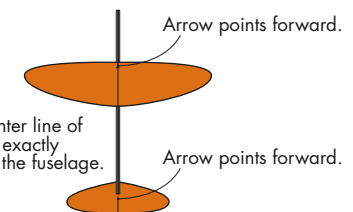
To glue the wings flush onto the fuselage, use a pencil or scissors to flatten out the part where the wings attach to the fuselage.

7.



To give the wings an angle, bend along a straight ruler. (Refer to the assembly instructions for details on what degree of angle to use.)

8.



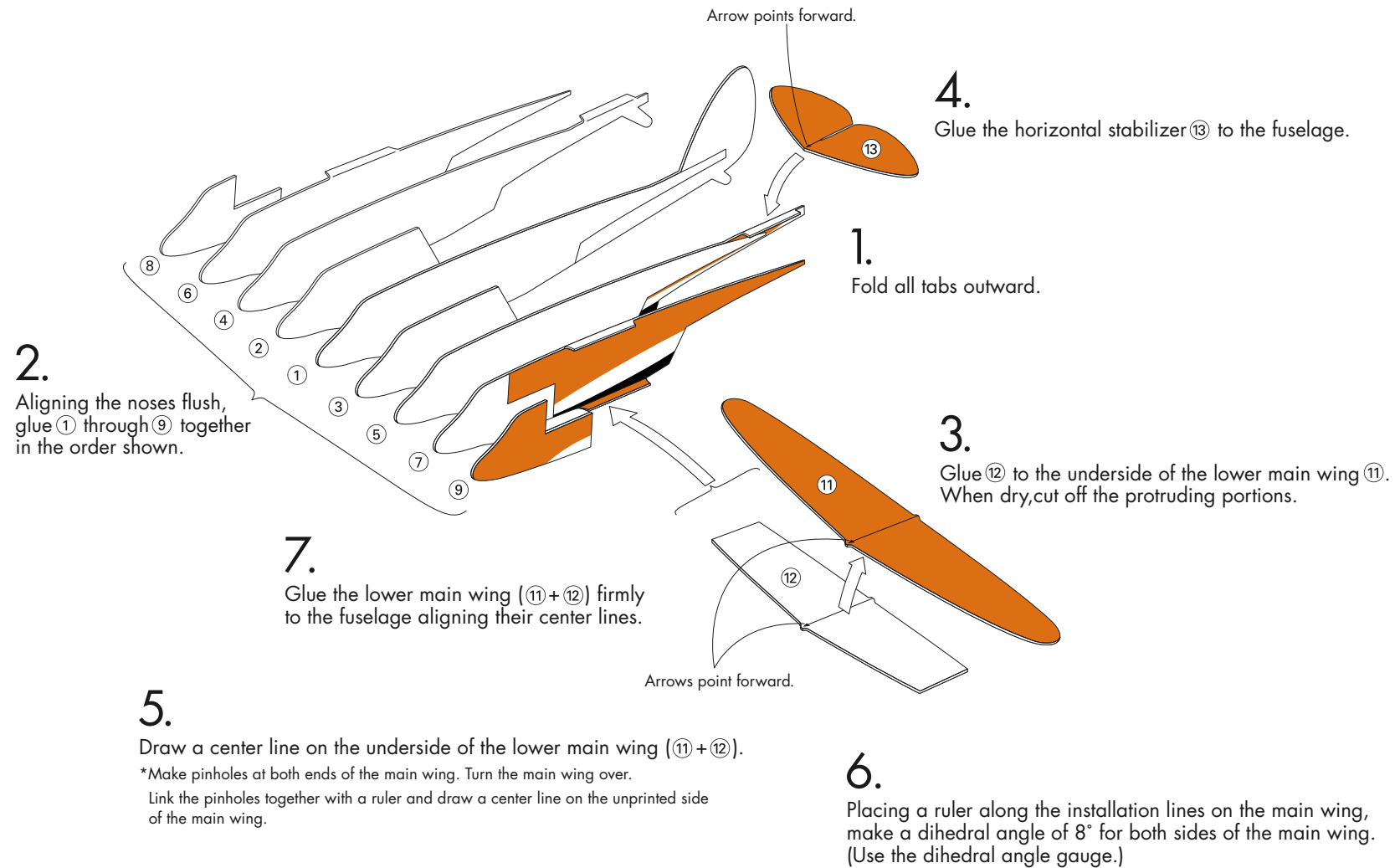
Make sure that the center line of the wings matches up exactly with the center line of the fuselage.

Also attach the horizontal stabilizer firmly.

Attach the wings and horizontal stabilizer carefully so that their center lines match up exactly with the center line of the fuselage.

GLUING INSTRUCTIONS

Glue the parts together in the order indicated.



12.

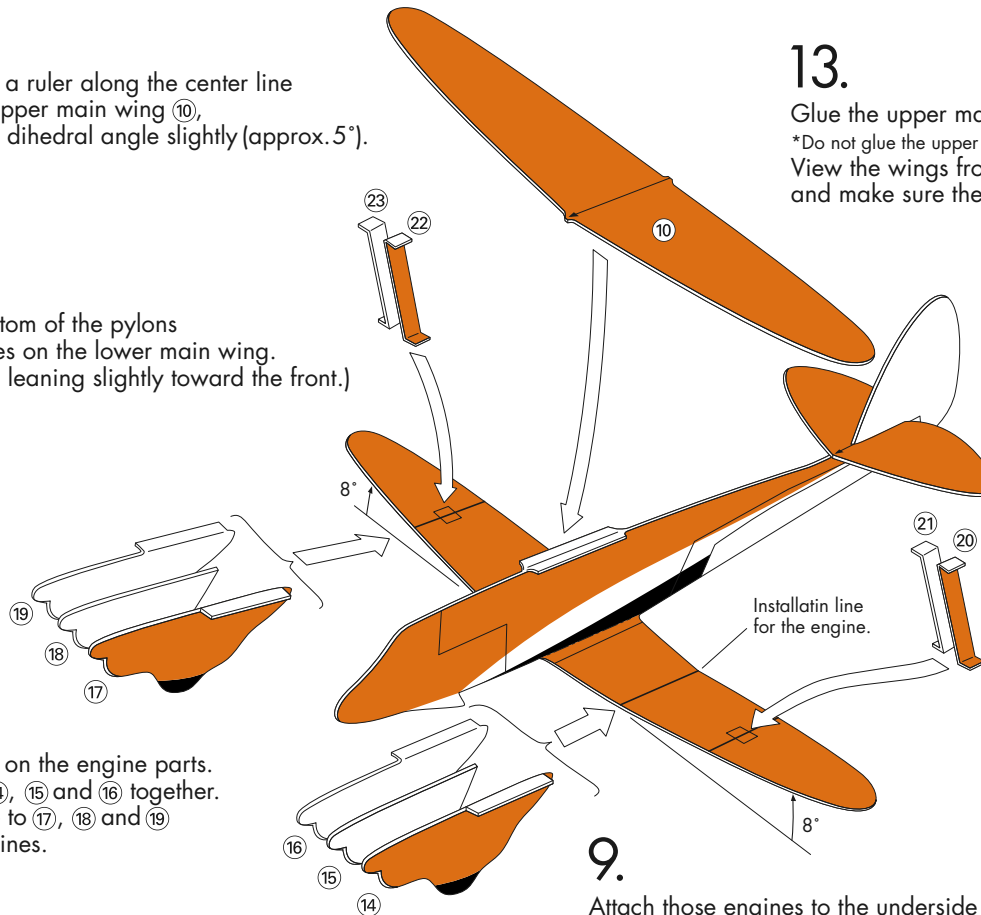
Placing a ruler along the center line of the upper main wing ⑩, make a dihedral angle slightly (approx. 5°).

13.

Glue the upper main wing ⑩ to the fuselage top.
*Do not glue the upper part of the pylons to the wing yet.
View the wings from the top, bottom, back and front and make sure they are parallel.

11.

Glue the bottom of the pylons to the squares on the lower main wing. (Attach them leaning slightly toward the front.)



8.

Fold all tabs on the engine parts. Then, glue ⑭, ⑮ and ⑯ together. Do the same to ⑰, ⑱ and ⑲ to make engines.

9.

Attach those engines to the underside of the lower main wing aligning with the installation lines.

10.

Fold tabs of ⑳, ㉑, ㉒ and ㉓. Then, glue ㉒ and ㉑, then ㉒ and ㉓ respectively, to make pylons.

FINISHING TOUCHES

Give the finishing touches to the plane after it dries thoroughly.

15.

Camber both the upper and the lower main wings slightly with your fingers.

16.

Using the dihedral angle gauge, make sure the dihedral angle for the lower main wing is 8°.

17.

View the plane from both the front and the back and straighten any warps or bends in the fuselage and the wings.

14.

View the plane from the front to check that the fuselage and pylons are parallel. Then, glue the top part of the pylons to the underside of the upper main wing.

