

Canon 3D-Papercraft Mini-book

Buildings of the World Series France Arc de Triomphe

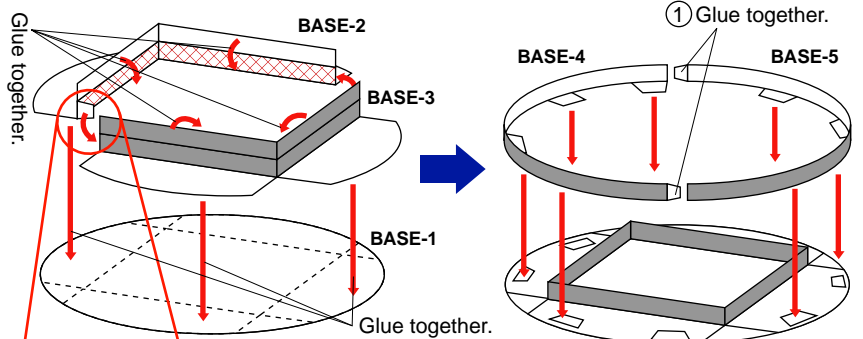
The Arc de Triomphe was built in Paris's Place de l'Etoile to commemorate Napoleon's military victories. Construction began in 1806 and was completed in 1836. The walls of the arch are decorated with sculpture and relief carvings depicting the battles of Napoleon's armies. Along with the Eiffel Tower, the arch is today one of the best-known symbols of Paris.



*Cut out the card above and save it. You can collect the cards from each of the Papercraft projects to make your own mini-book!

2. Build the base

Glue together as shown in the figure. (You can also display your sculpture without gluing down base 2, 3, 4, and 5.)



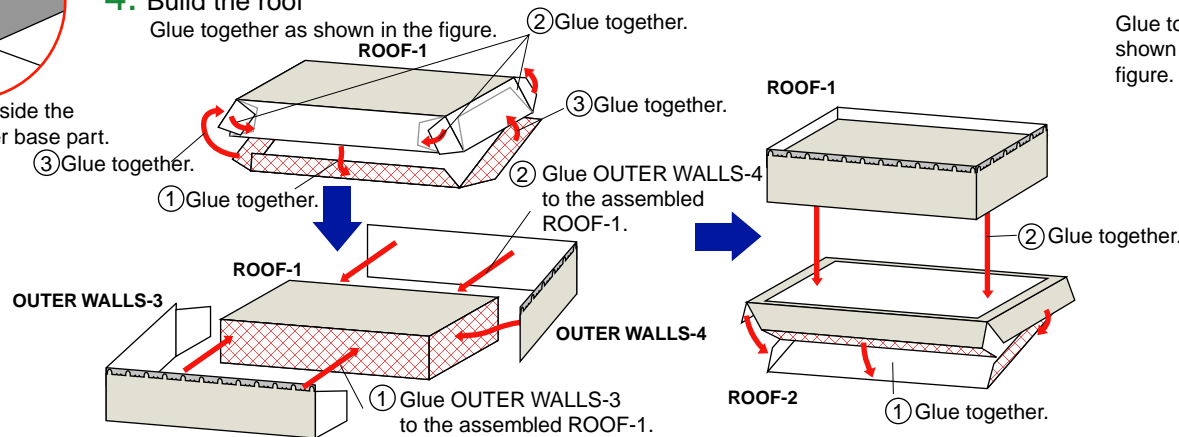
* Align the edges of base 2 and base 3 with the edge of base 1 and glue in place.

② Align the letters and glue down BASE-4 and BASE-5.

4. Build the roof

Glue together as shown in the figure.

Glue the tab inside the fold of the other base part.

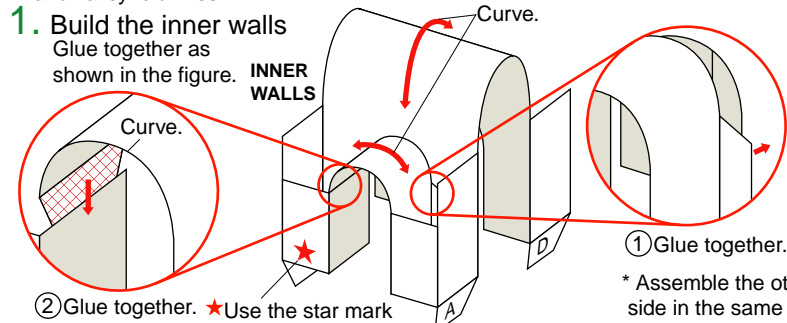


★Directions

Print out the pages, cut out the parts, and fold along the mountain and valley fold lines.

1. Build the inner walls

Glue together as shown in the figure.



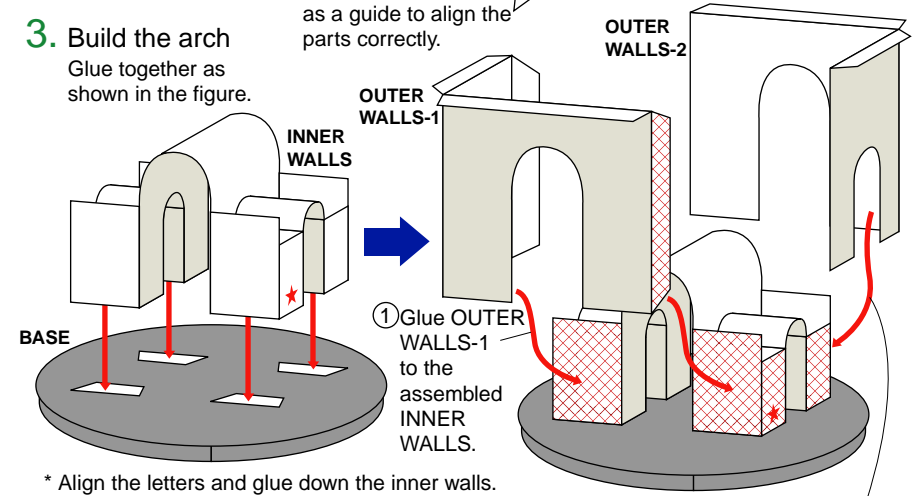
② Glue together. * Use the star mark as a guide to align the parts correctly.

① Glue together.

* Assemble the other side in the same way.

3. Build the arch

Glue together as shown in the figure.



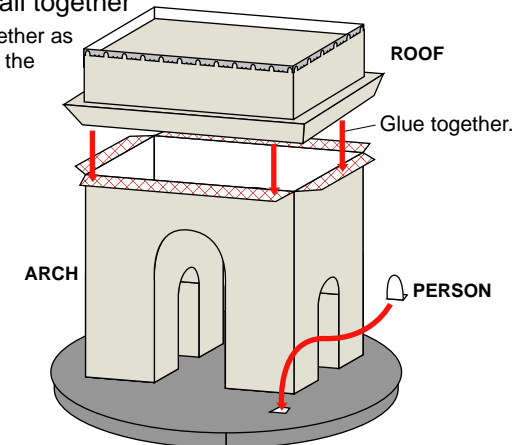
* Align the letters and glue down the inner walls.

① Glue OUTER WALLS-1 to the assembled INNER WALLS.

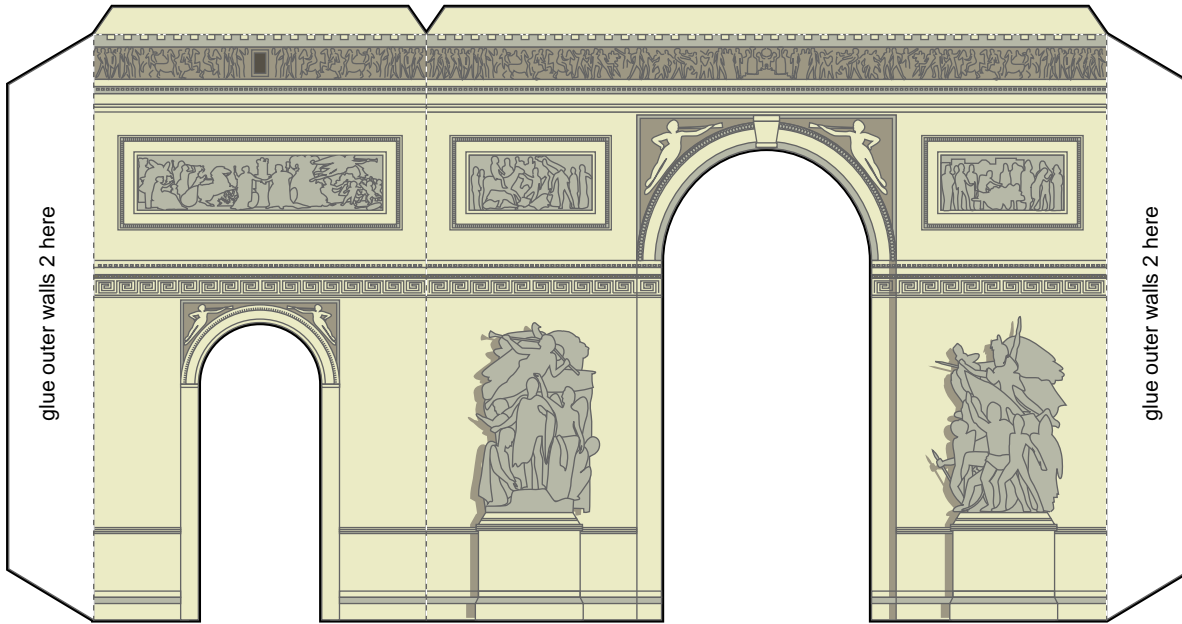
② Glue OUTER WALLS-2 to the assembled INNER WALLS.

5. Put it all together

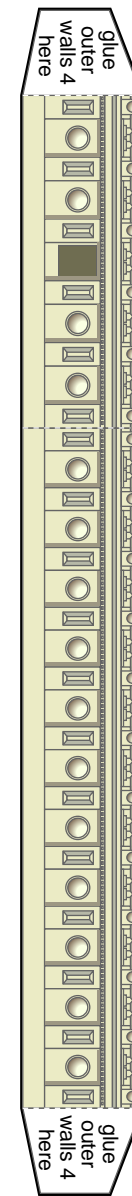
Glue together as shown in the figure.



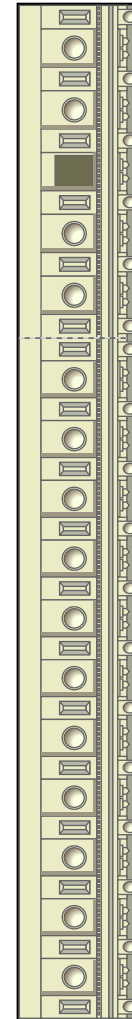
OUTER WALLS-1



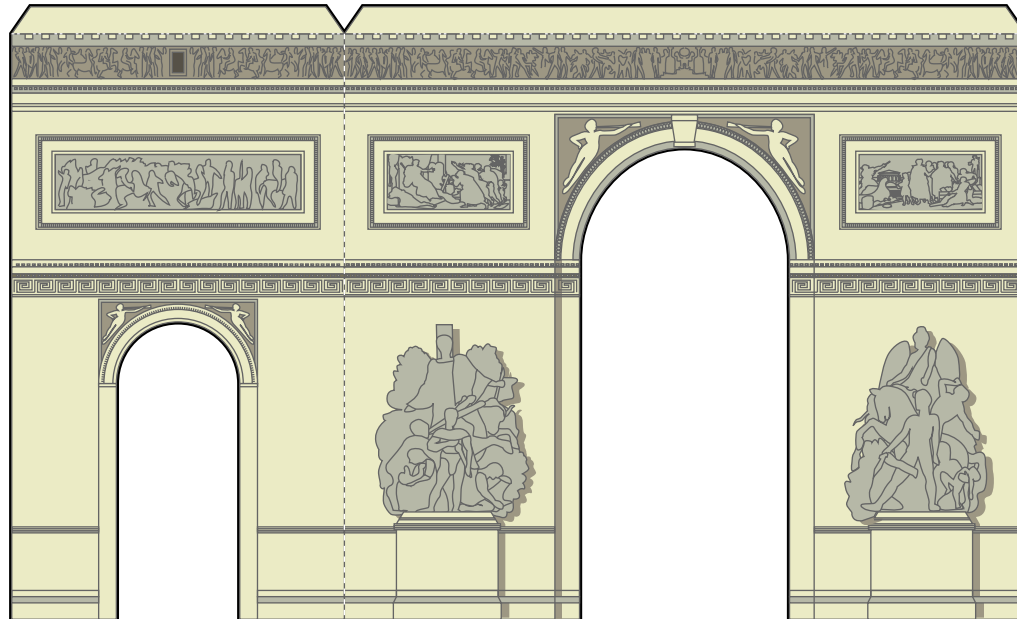
OUTER WALLS-3



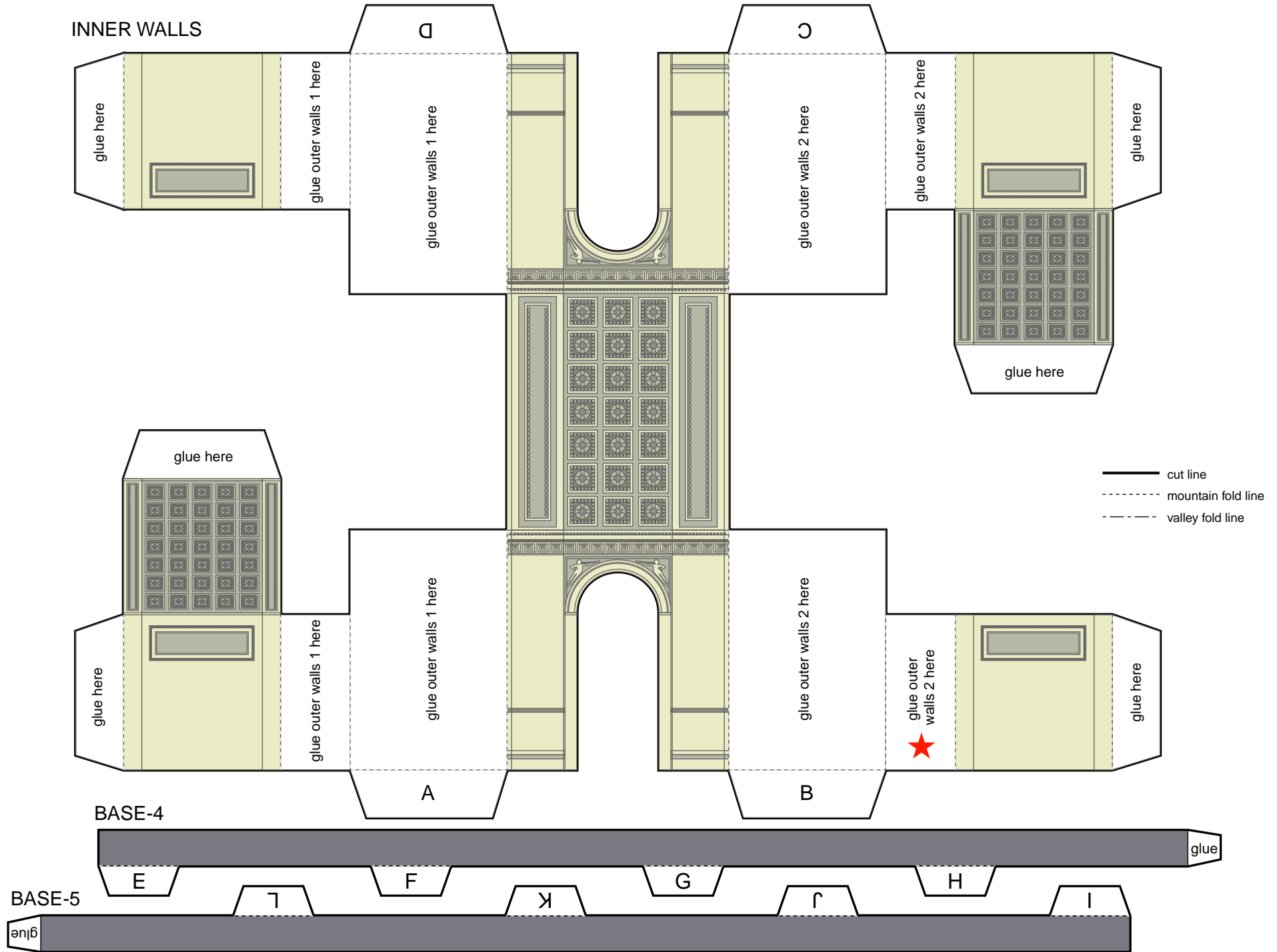
OUTER WALLS-4



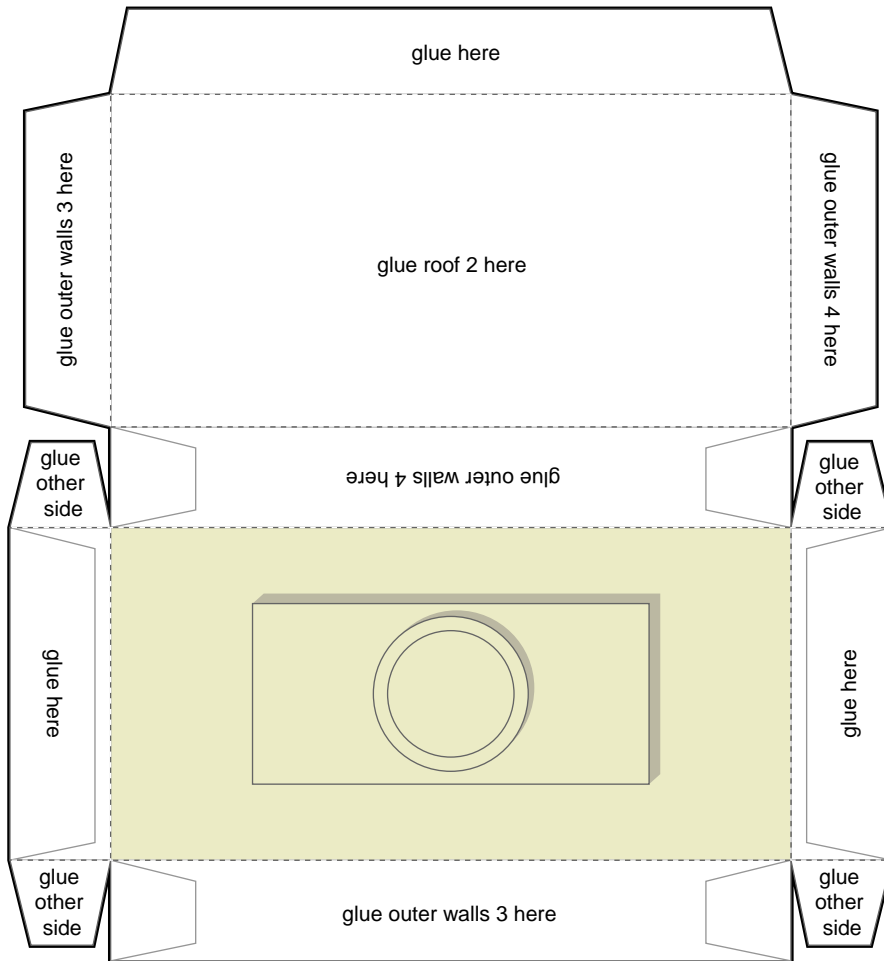
OUTER WALLS-1



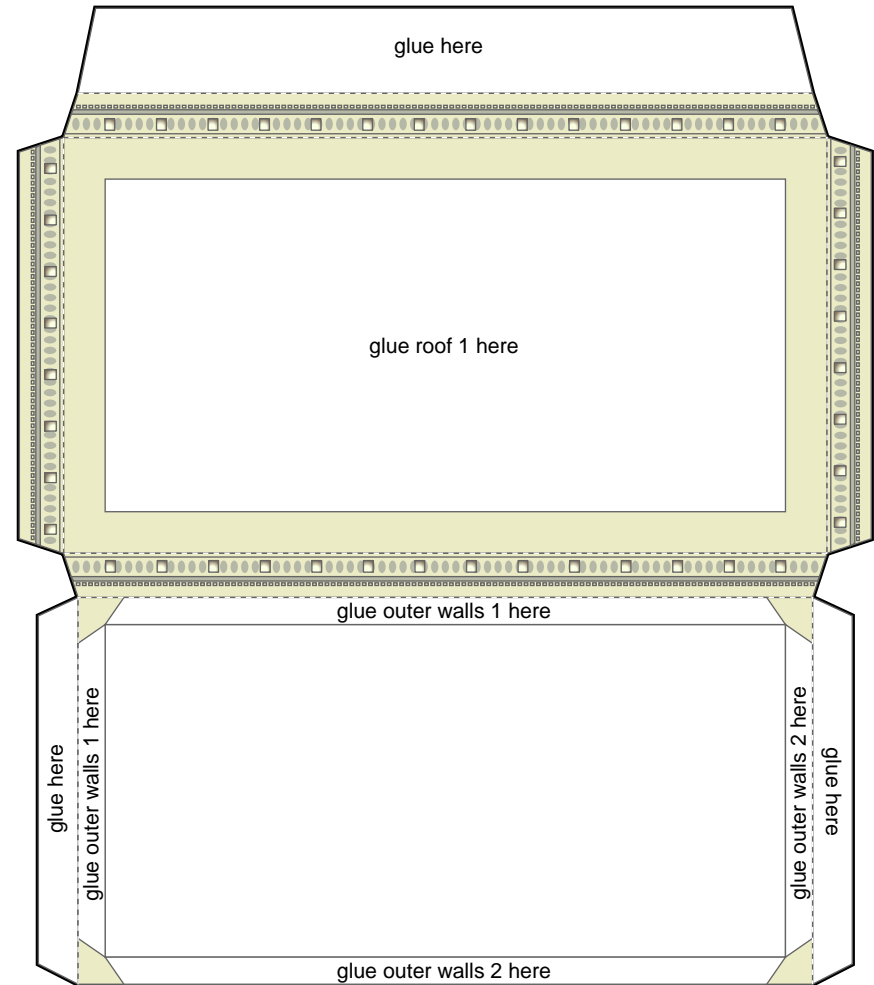
- cut line
- - - - - mountain fold line
- · - · - valley fold line



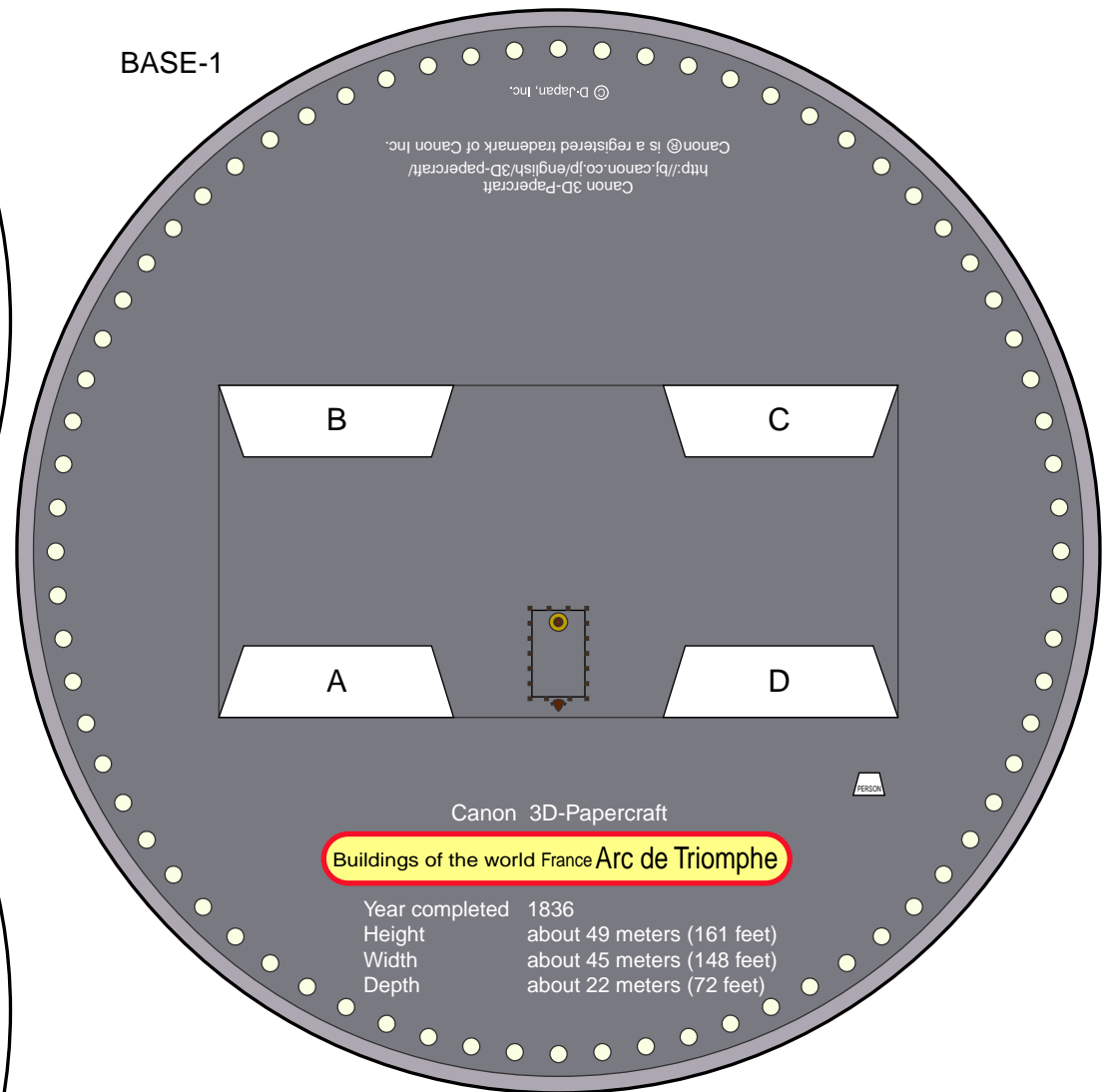
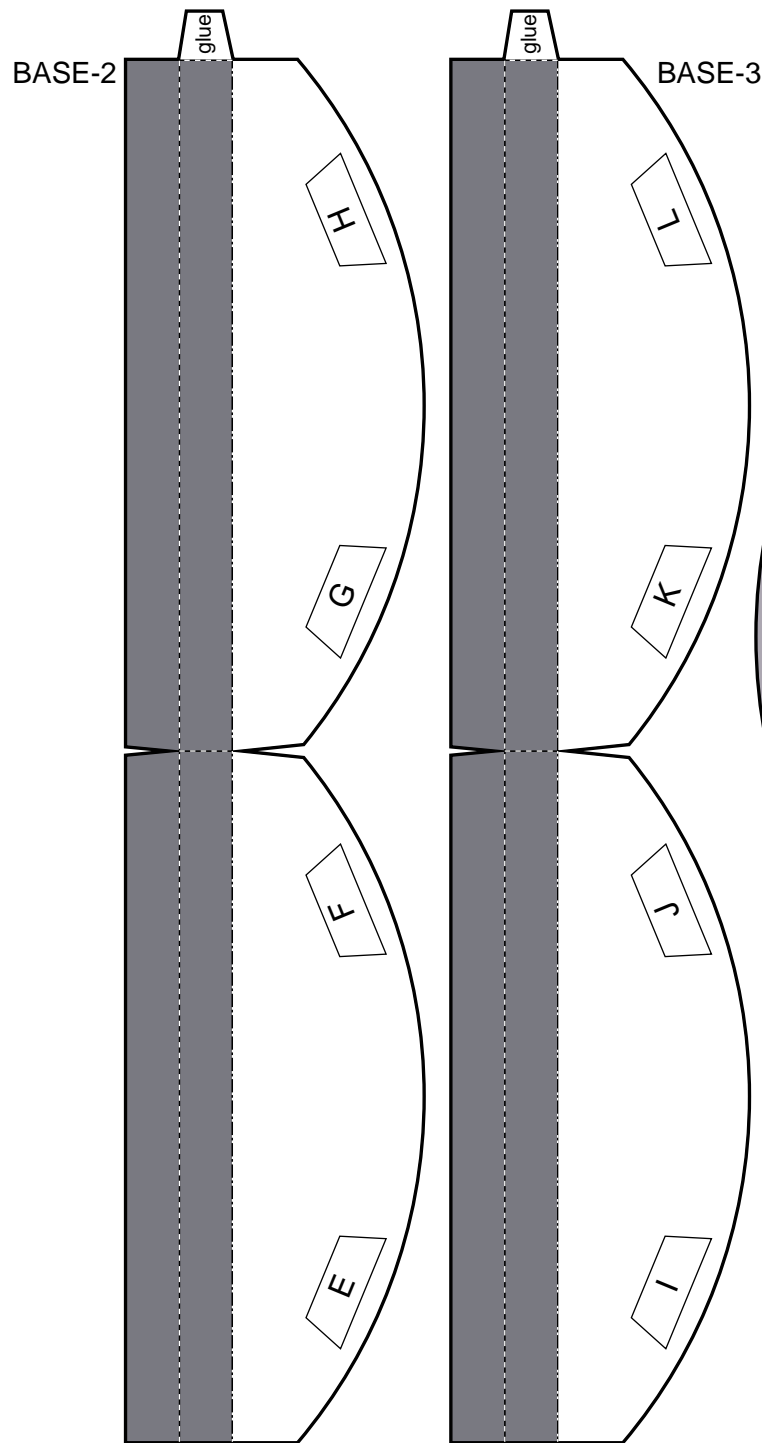
ROOF-1



ROOF-2



- cut line
- - - - - mountain fold line
- · - · - valley fold line



Buildings of the world France Arc de Triomphe

Canon 3D-Papercraft

Year completed	1836
Height	about 49 meters (161 feet)
Width	about 45 meters (148 feet)
Depth	about 22 meters (72 feet)

PERSON



- cut line
- - - - mountain fold line
- · - · valley fold line