

Canon Science Papercraft Mini-book

Natural Science Series Anatomy of a Volcano

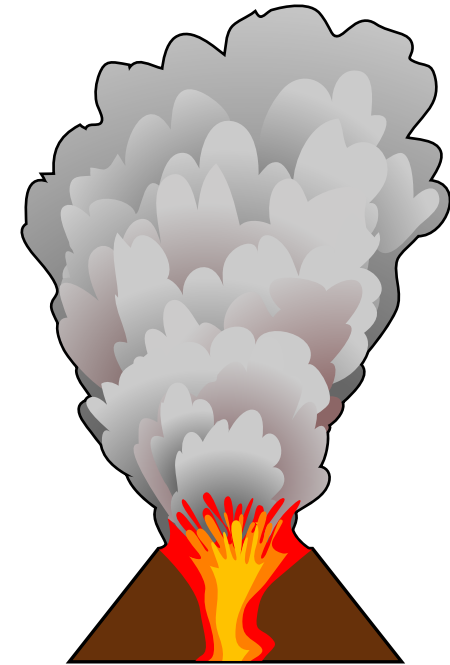
Beneath a volcano lies a pocket of magma, or molten rock. As the magma mingles with steam or hot gasses and pressure builds up, the magma rises through rifts in the surrounding rock, and at last erupts from the earth's surface. This volcano has a caldera, caused by a collapse or cave-in of the surrounding area.



- cut line
- - - - - mountain fold line
- - - - - valley fold line

Cross section part A (back)

Cross section part B (back)

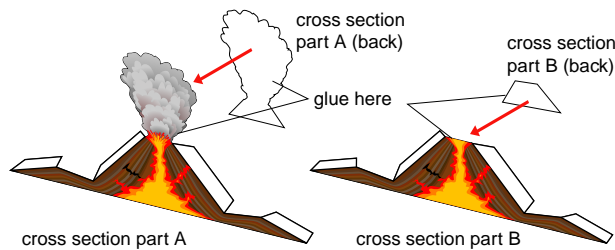


*Cut out the card above and save it. You can collect the cards from each of the Papercraft projects to make your own mini-book!

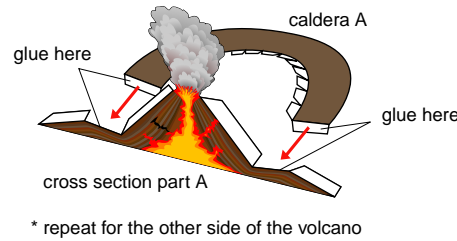
★ Directions

Print out pages 1 through 4, cut out each individual part along their cut lines, and fold along the mountain and valley fold lines.

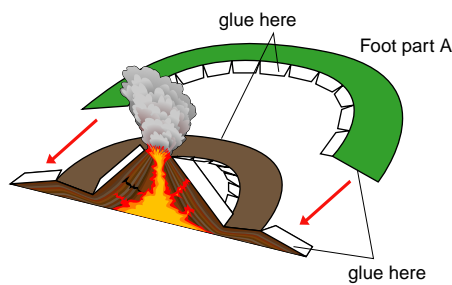
1. Build the cross-section



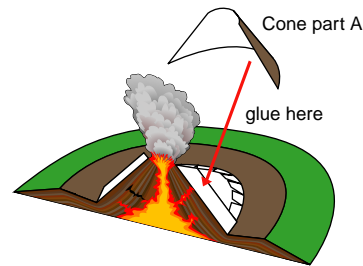
2. Attach the caldera



3. Attach the foot of the mountain

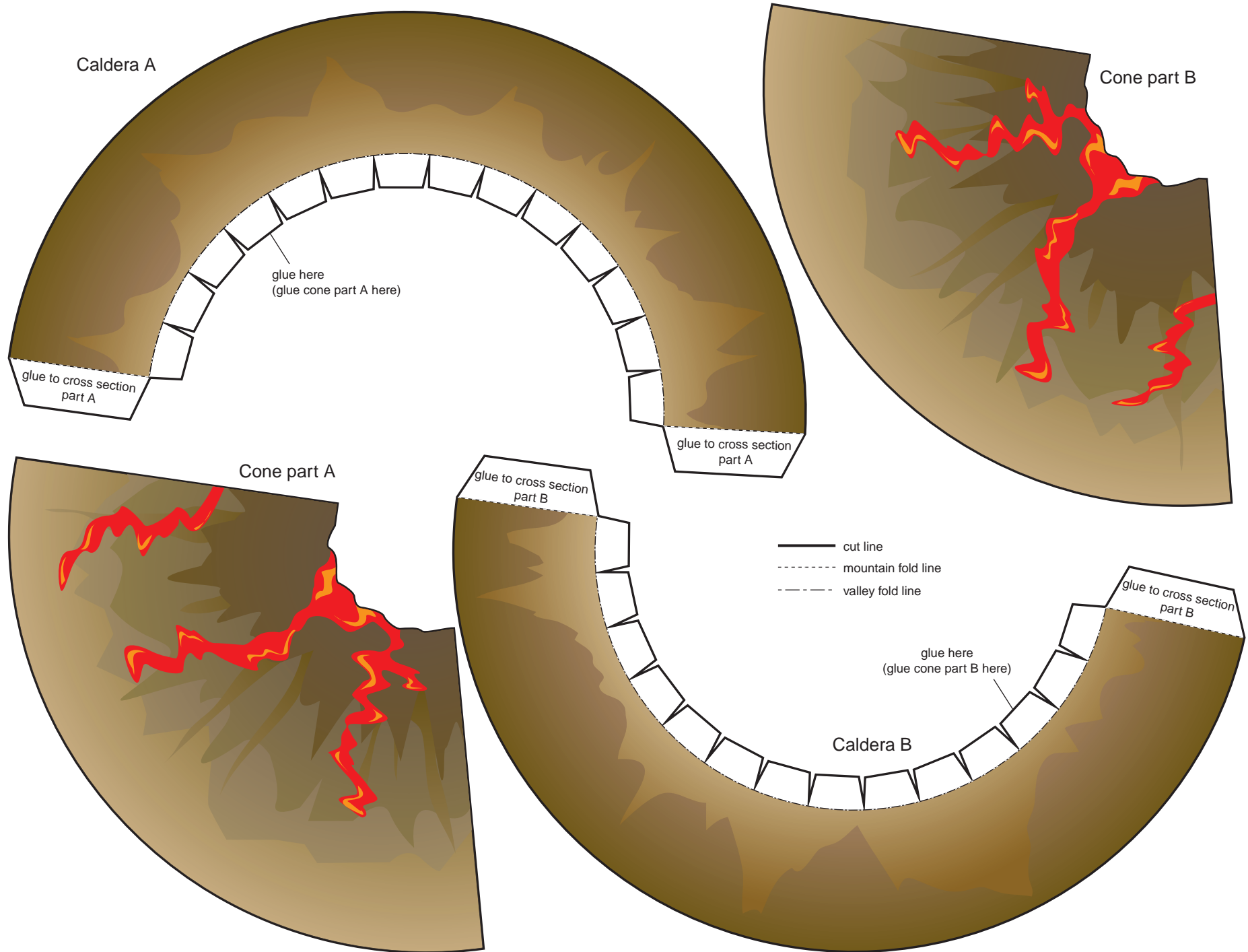


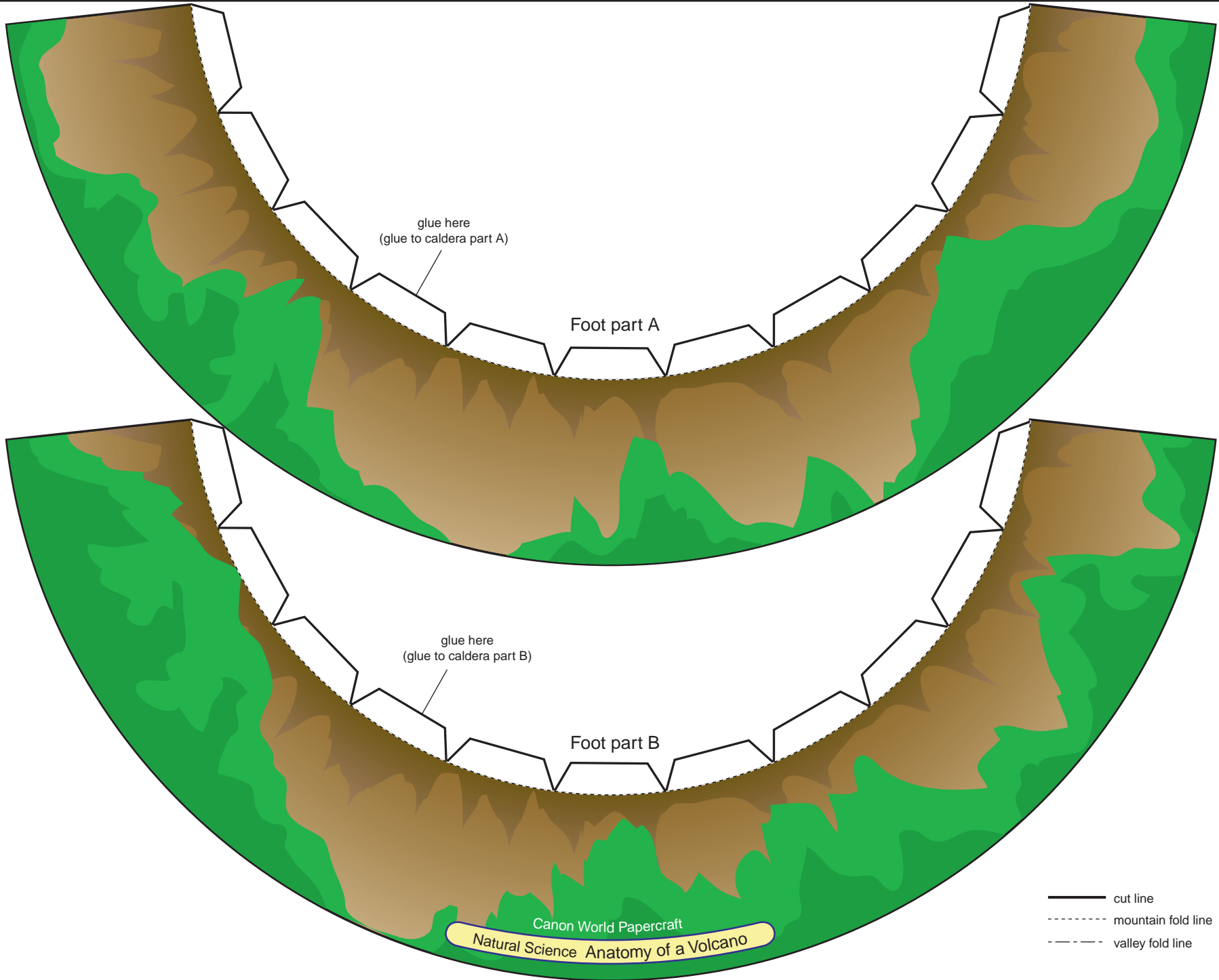
4. Attach the volcano cone



6. Align the two cross-sections







glue here
(glue to caldera part A)

Foot part A

glue here
(glue to caldera part B)

Foot part B

- cut line
- - - mountain fold line
- · - valley fold line

Canon World Papercraft
Natural Science Anatomy of a Volcano

