

3D PAPER CRAFT

[Seasons & Holidays]

Valentine's Day Gift Box



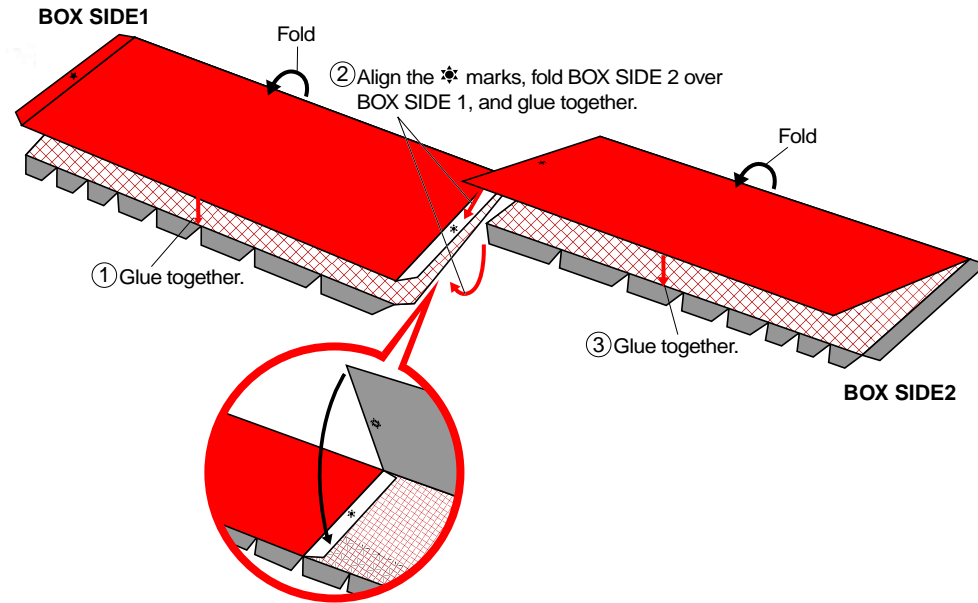
Saint Valentine was a priest who lived in the third century A.D., during the time of the Roman Empire. He is said to have performed marriages for young lovers, contrary to imperial edict prohibiting young men from marrying. As a result, he became known as the patron saint of love in medieval Europe. It became customary for lovers to exchange cards and gifts on February 14, the traditional anniversary of his death.

Build this Valentine's Day gift box and put a gift in it for someone special!

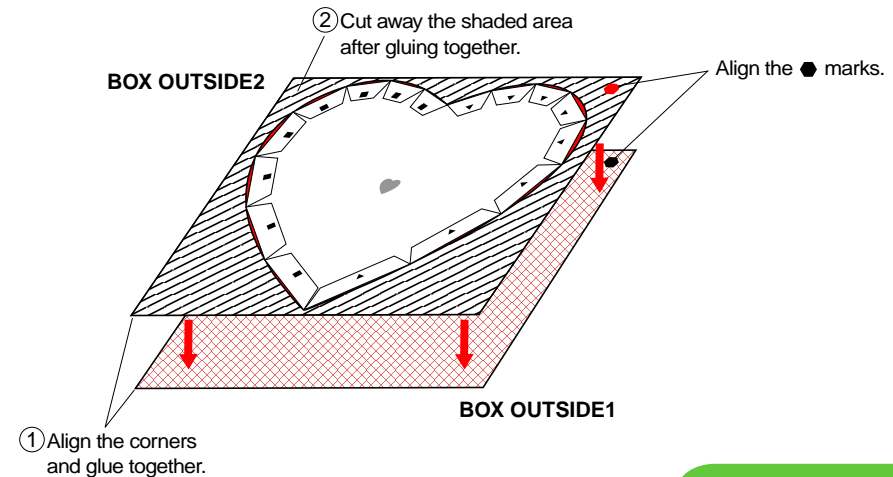
*When putting a gift in this box, wrap it in appropriate paper.

Directions

Build the BOX SIDES 1

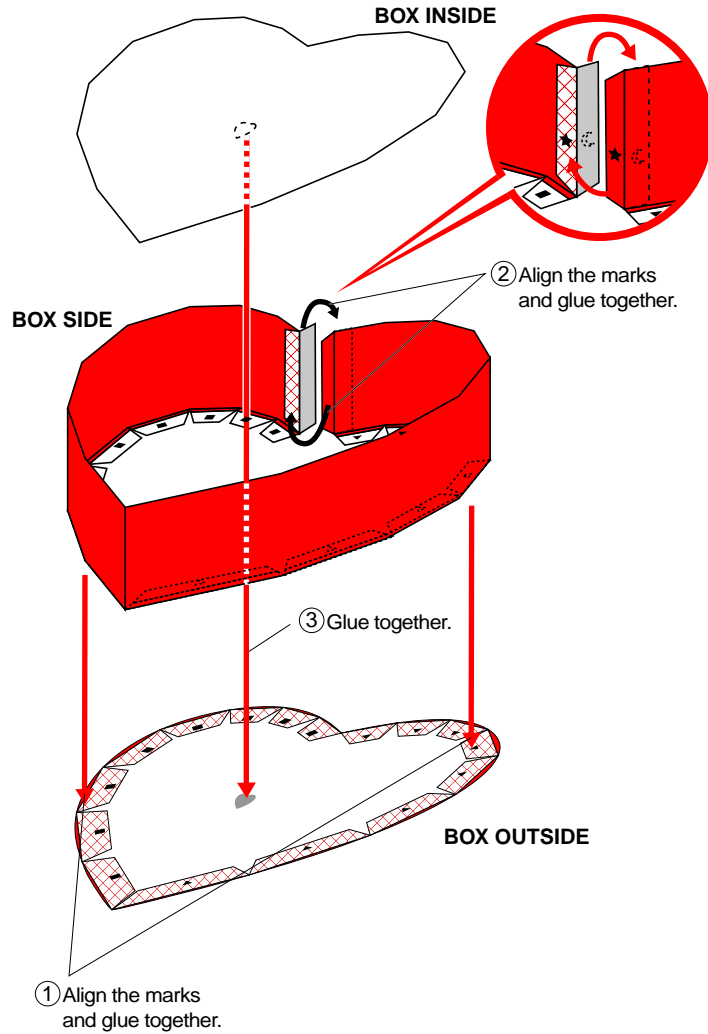


Build the BOX OUTSIDE 2

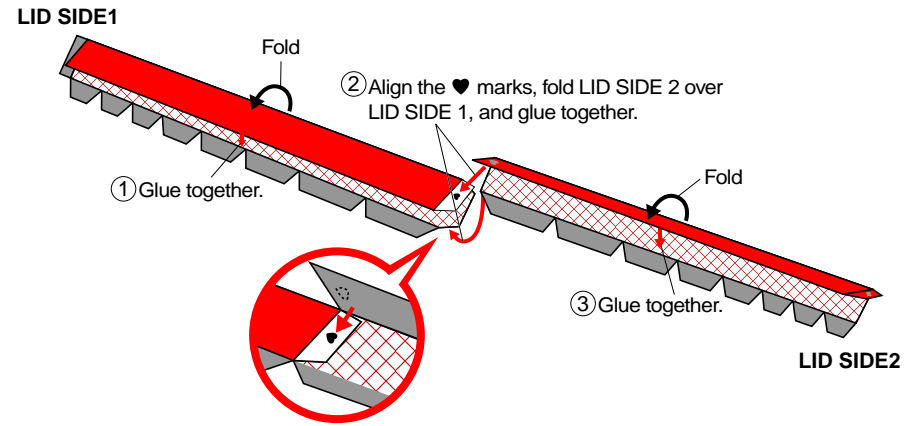


Directions

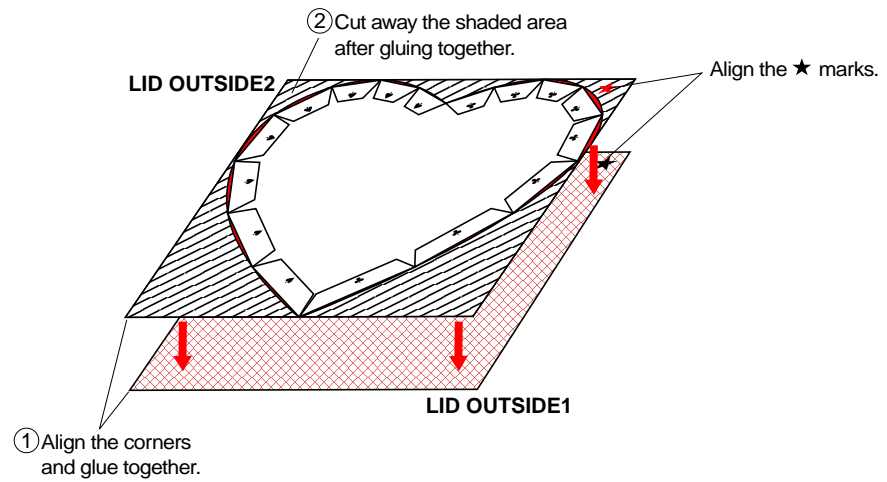
3 Build the BOX



4 Build the LID SIDES

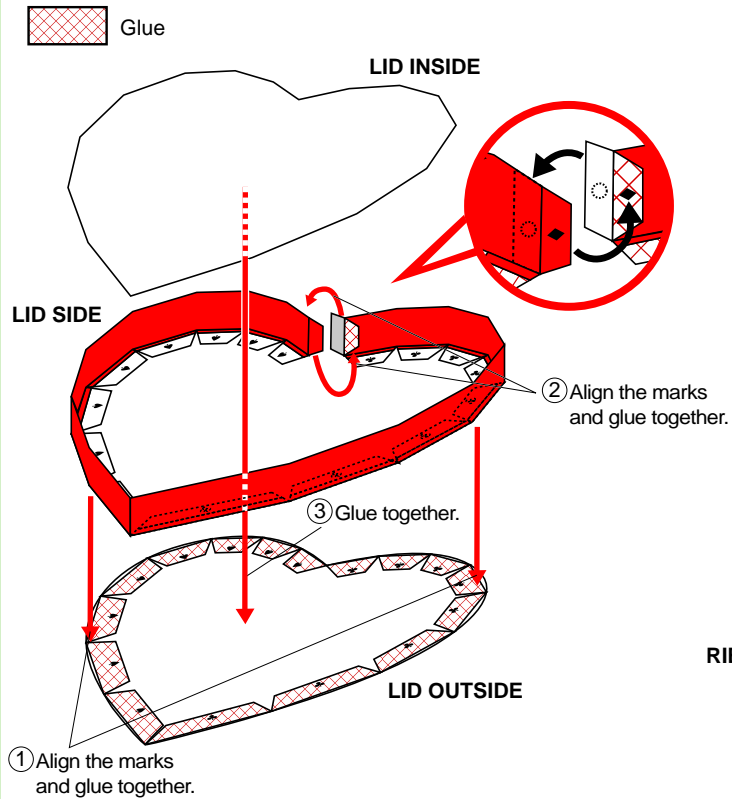


5 Build the LID OUTSIDE

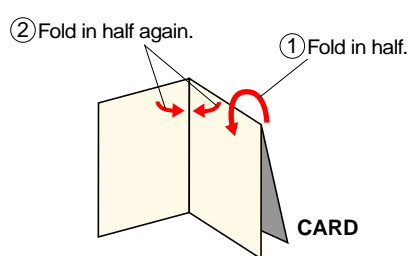


Directions

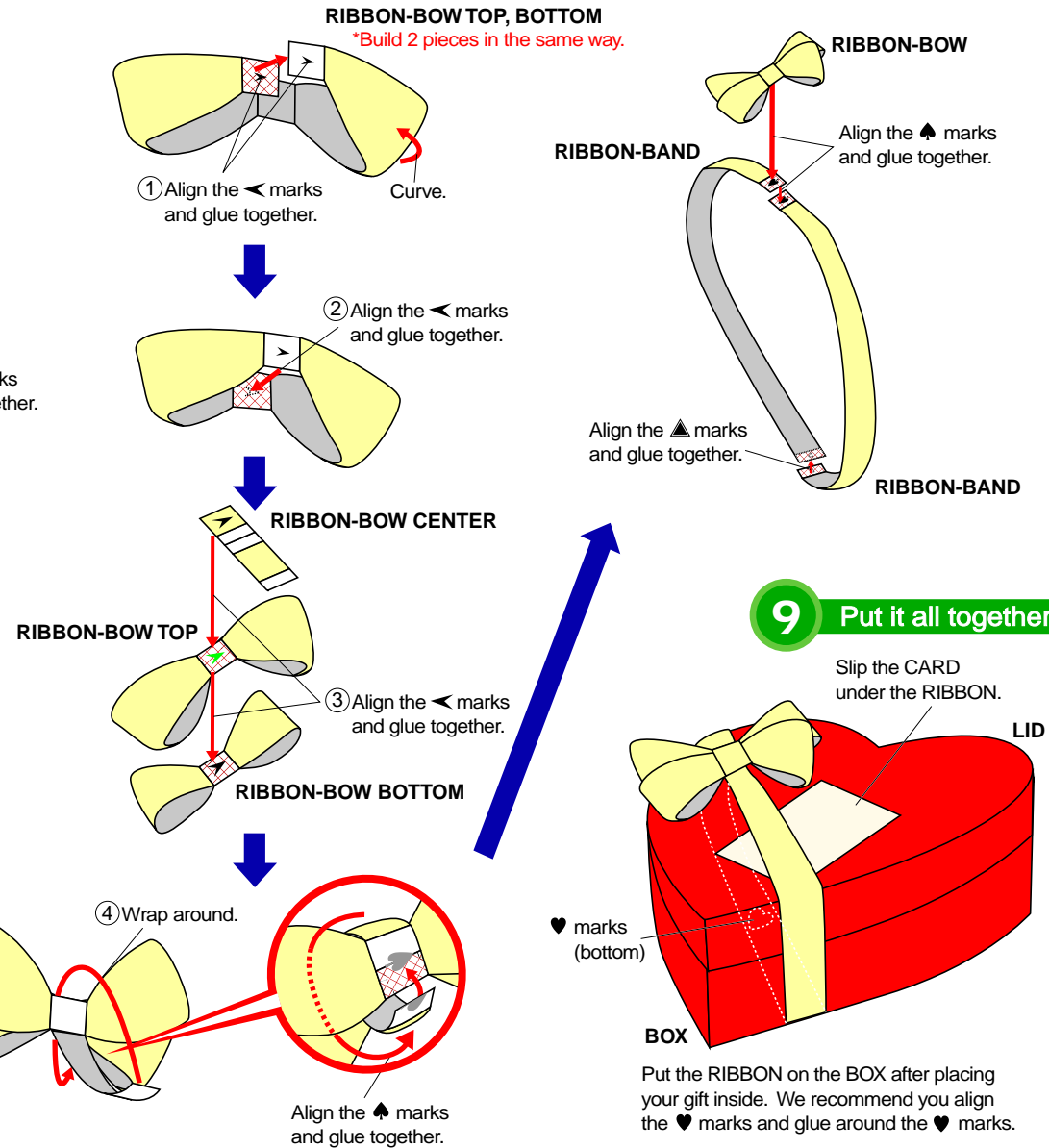
6 Build the LID



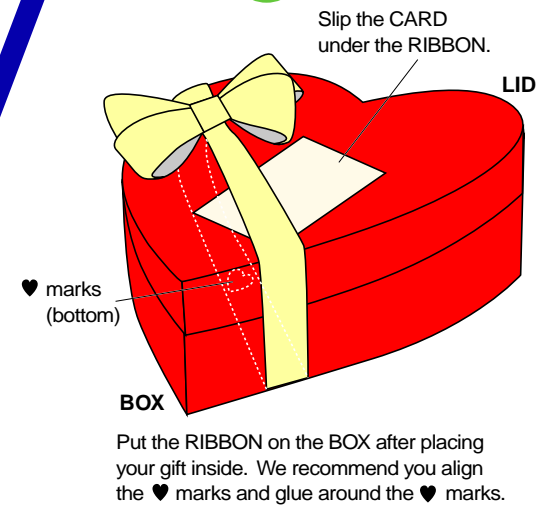
7 Build the CARD



8 Build the RIBBON

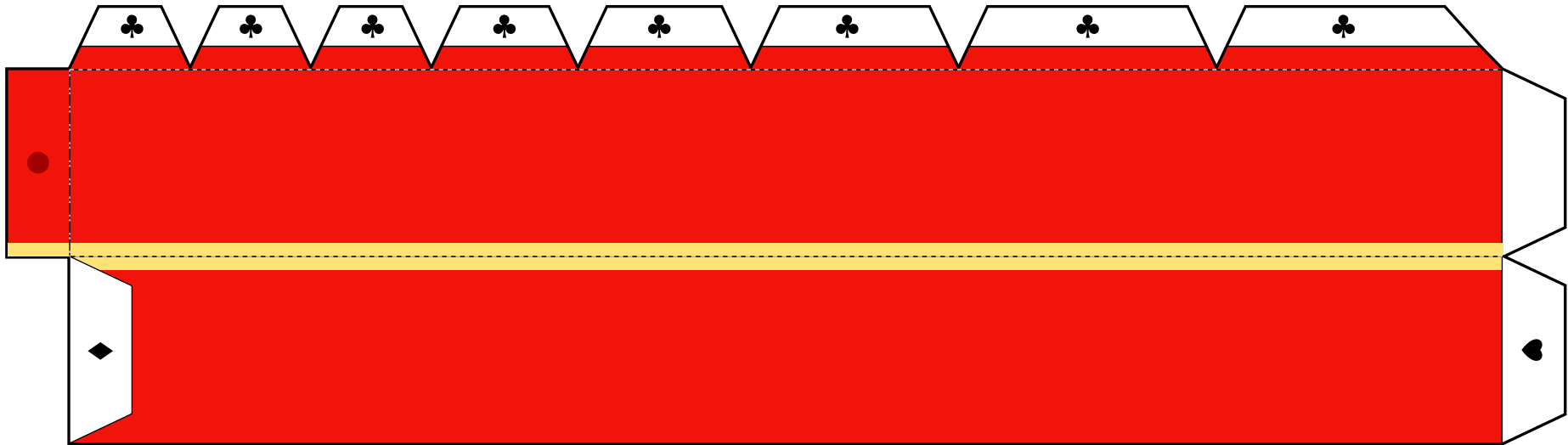


9 Put it all together

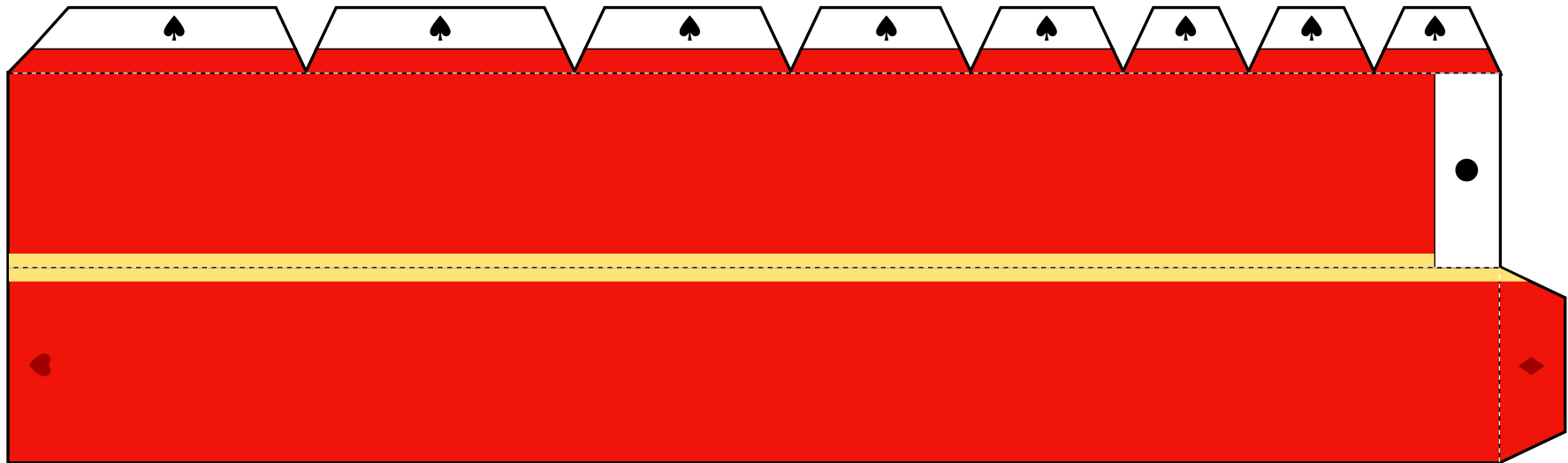


- Cut line
- - - Mountain fold
- · - · - Valley fold

LID SIDE1



LID SIDE2



- Cut line
- - - Mountain fold
- · - · - Valley fold

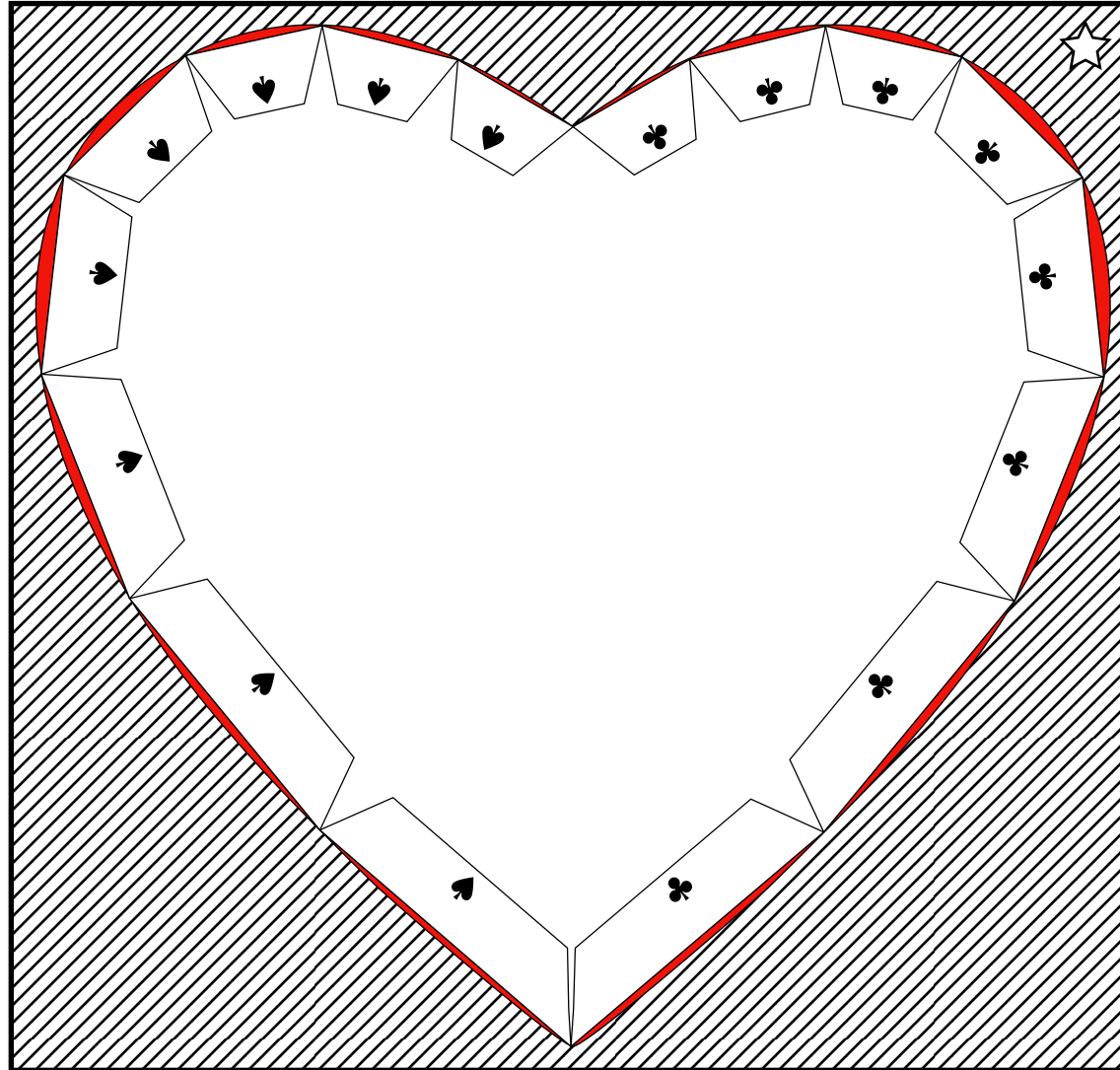
LID OUTSIDE1



Do not cut away from this side.

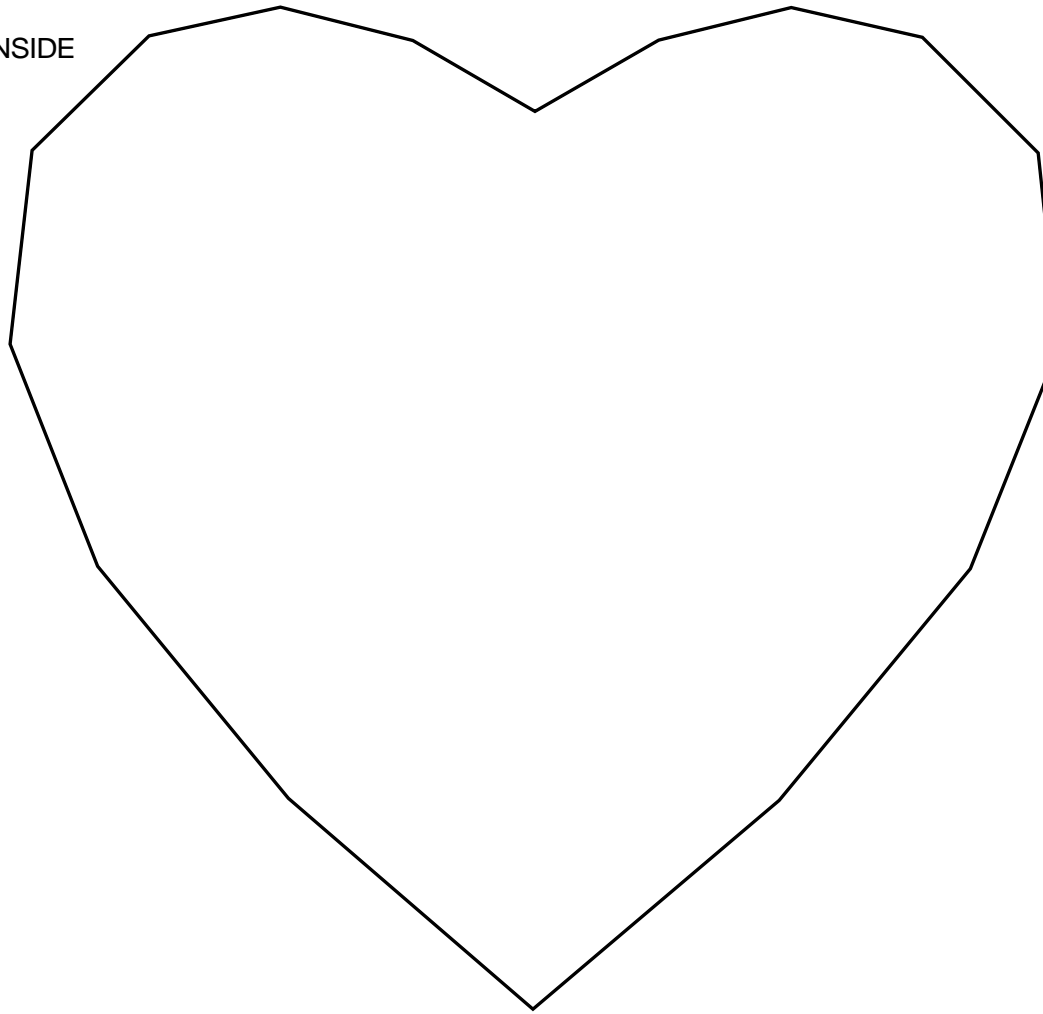
- Cut line
- - - Mountain fold
- · - · - Valley fold

LID OUTSIDE2



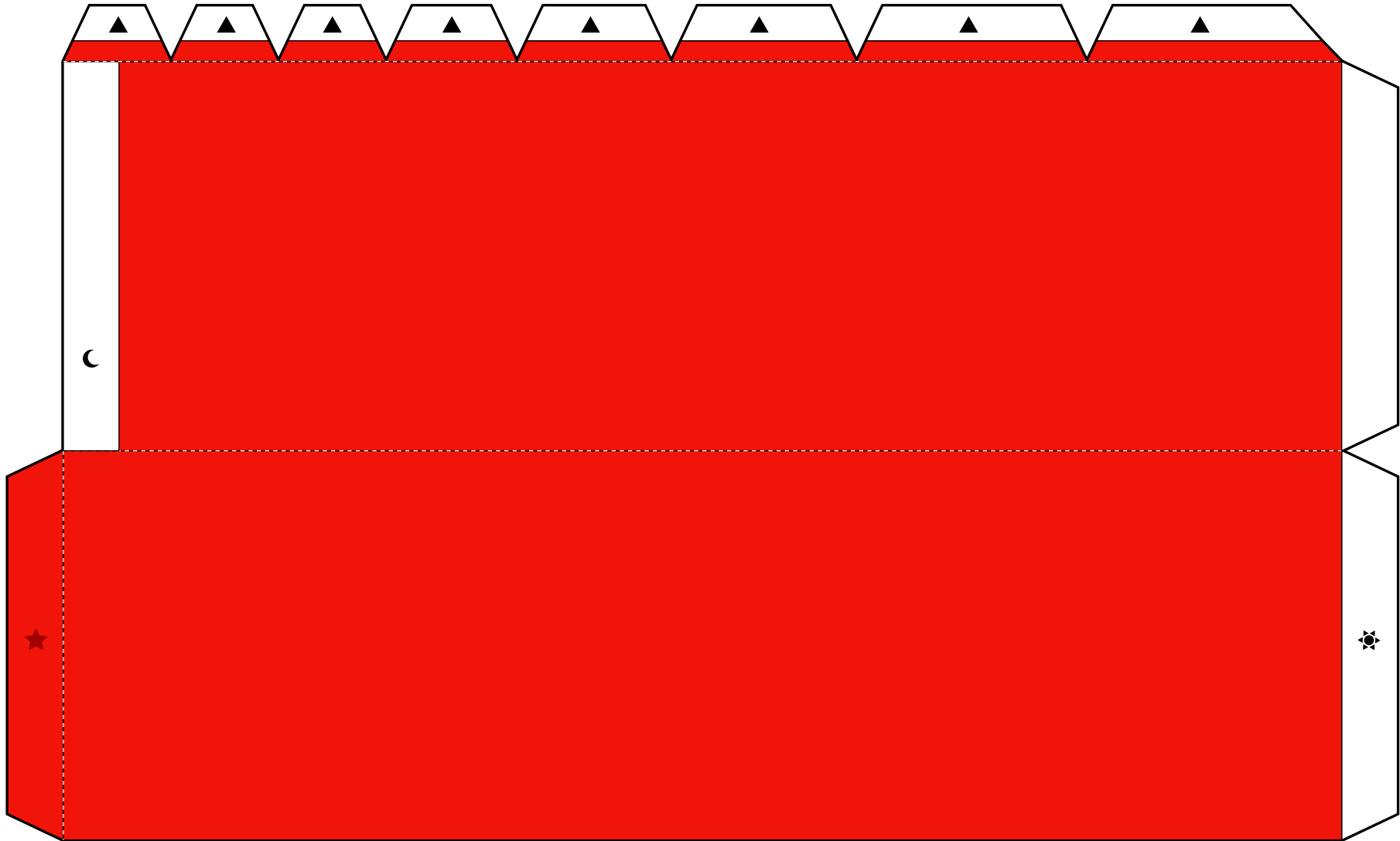
- Cut line
- - - Mountain fold
- · - · - Valley fold

LID INSIDE



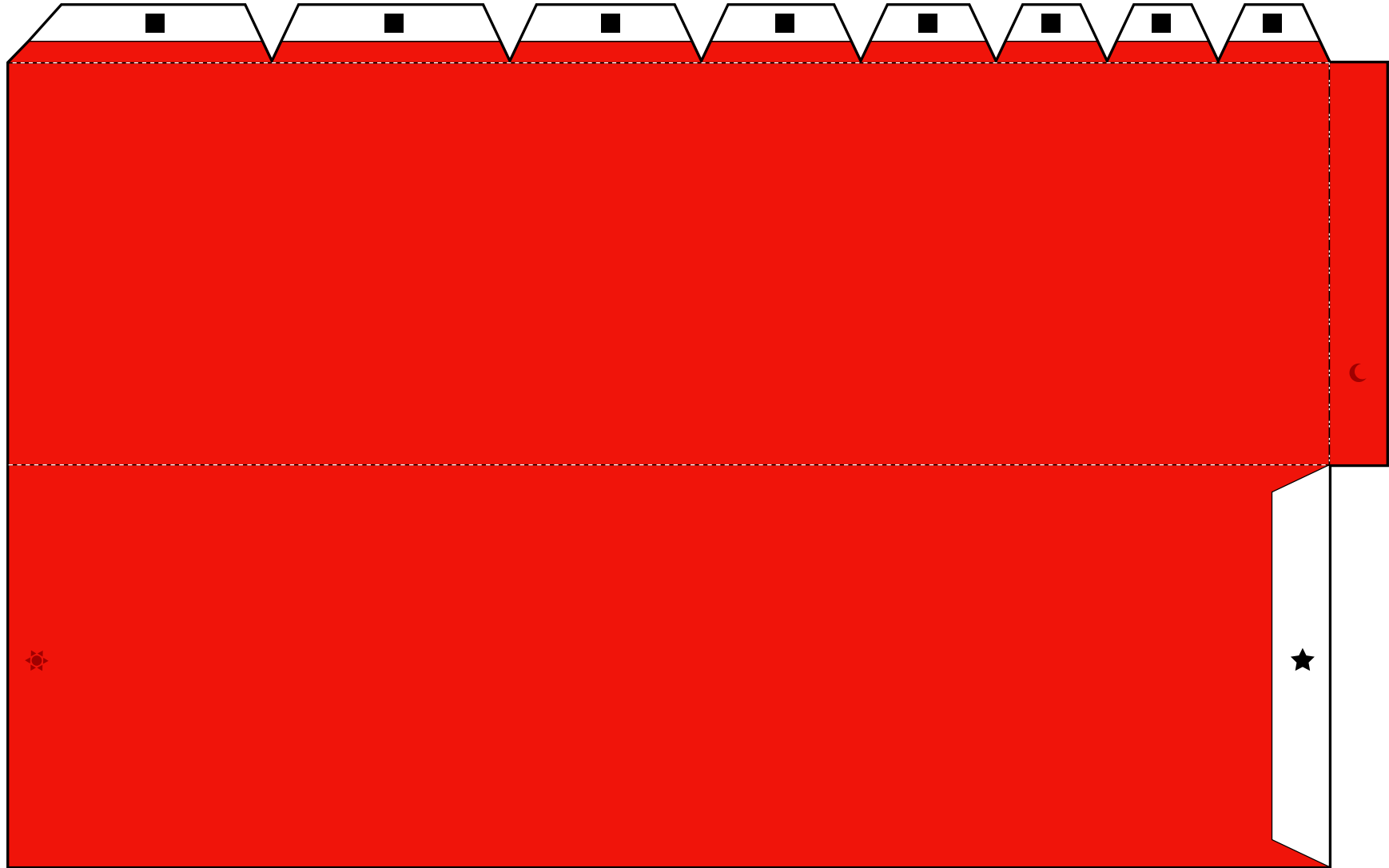
- Cut line
- - - Mountain fold
- · - · - Valley fold

BOX SIDE1



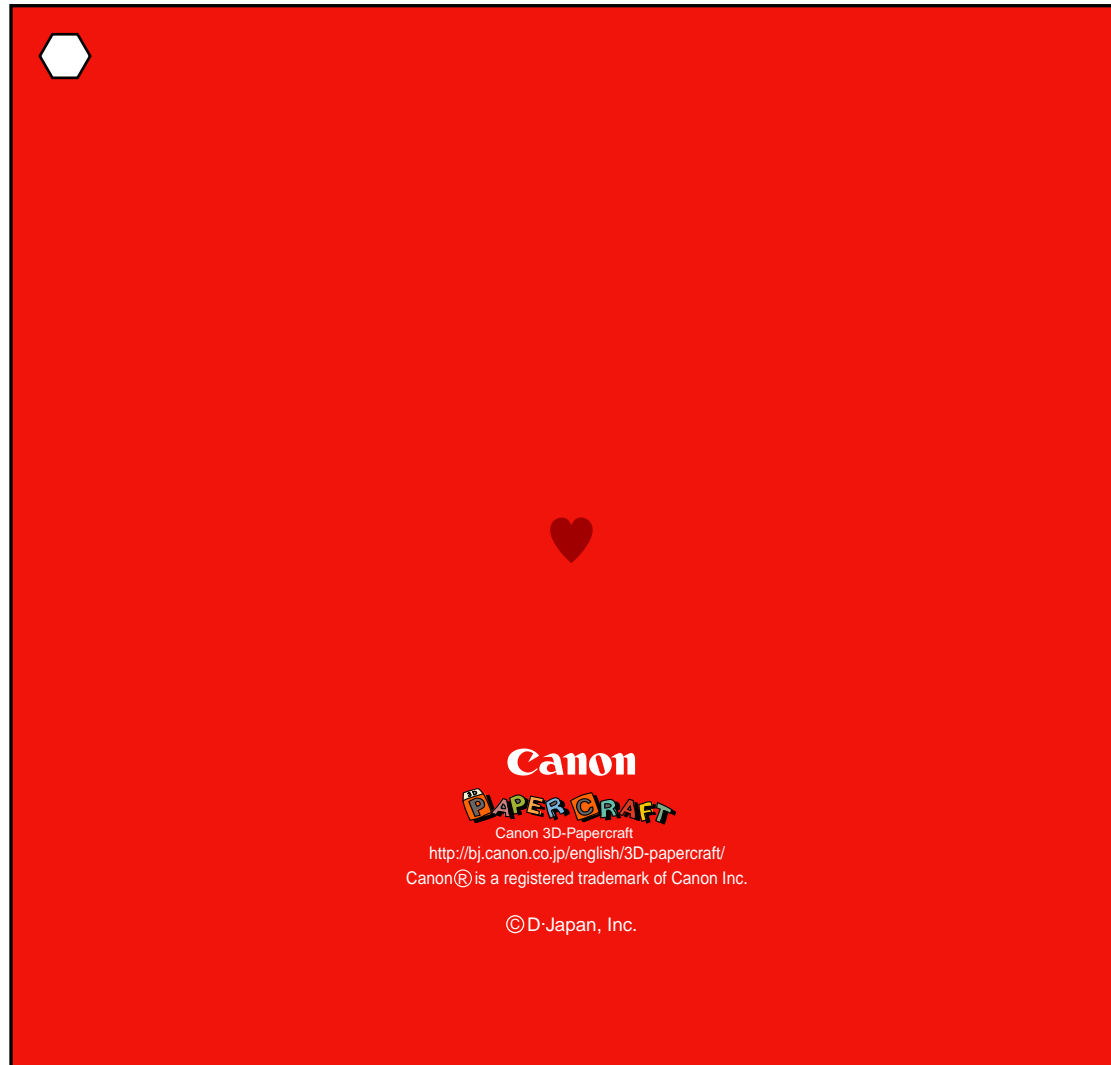
- Cut line
- - - Mountain fold
- · - · - Valley fold

BOX SIDE2



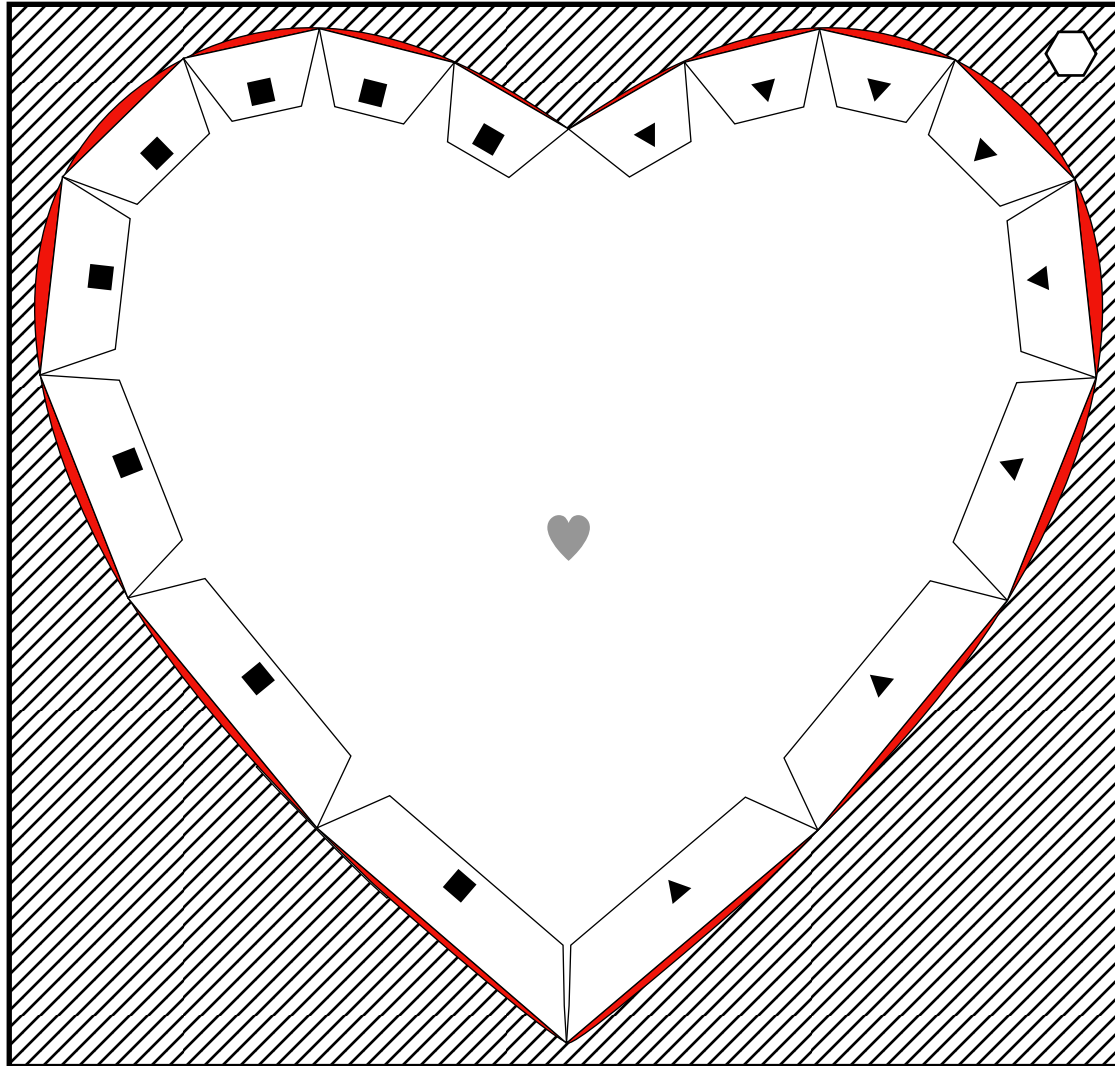
- Cut line
- - - Mountain fold
- · - · - Valley fold

BOX OUTSIDE1



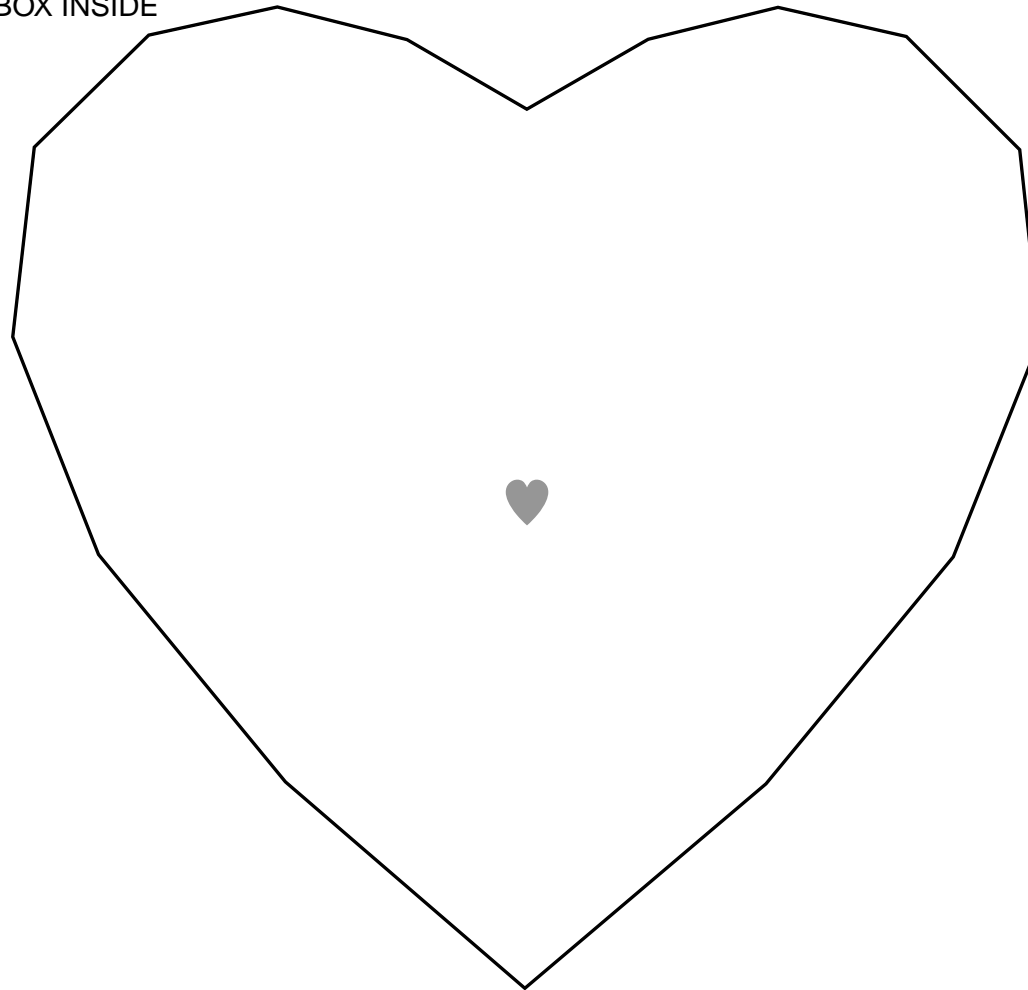
- Cut line
- - - Mountain fold
- · - · - Valley fold

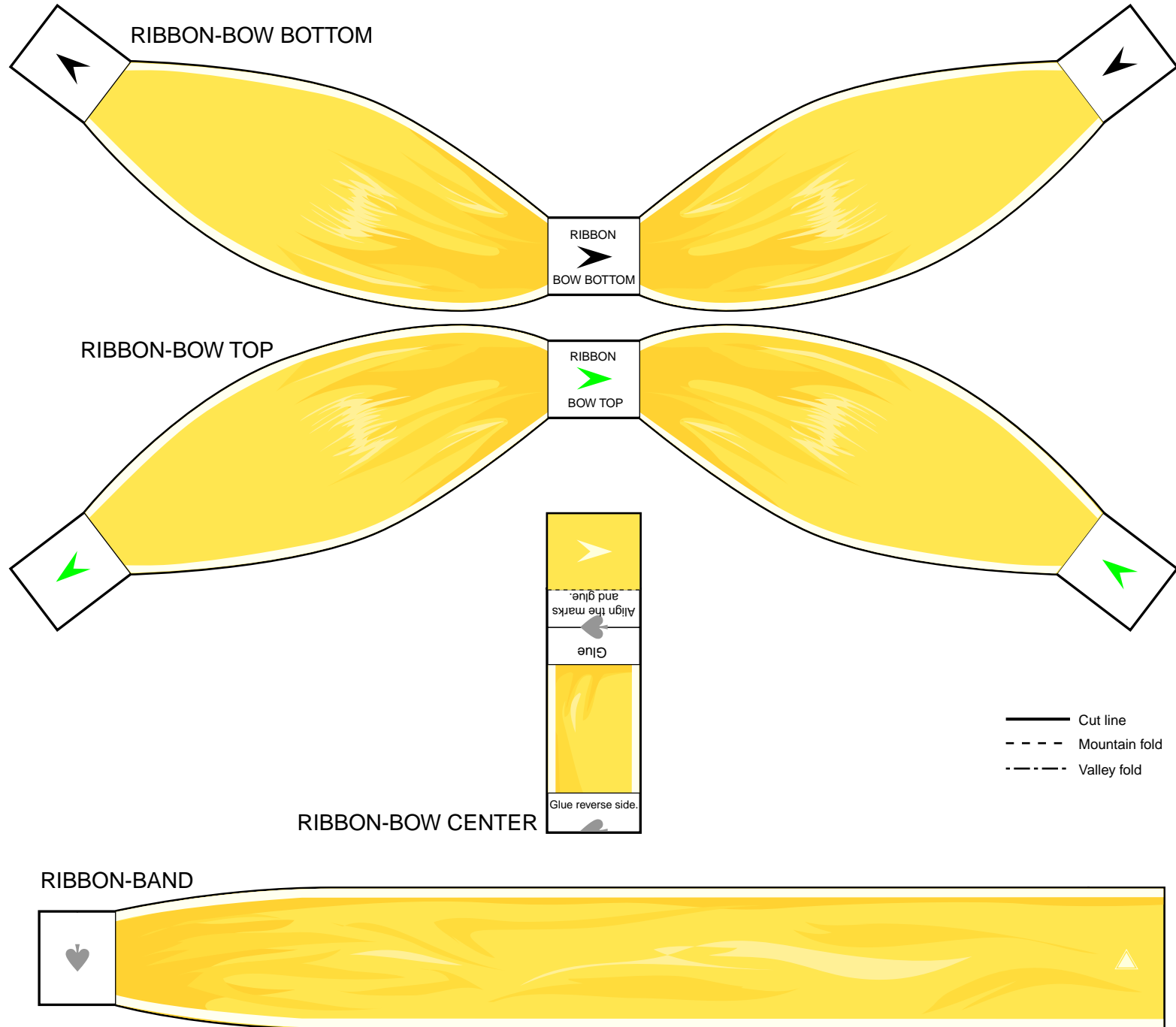
BOX OUTSIDE2



- Cut line
- - - Mountain fold
- · - · - Valley fold

BOX INSIDE





- Cut line
- - - Mountain fold
- · - · - Valley fold

RIBBON-BAND



CARD

