

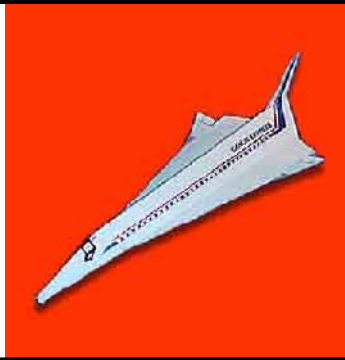
Canon Papercraft Mini-book

Toy Series

Orient Express

The Orient Express is a space plane design. A space plane flies through space to reach speeds much, much faster than airplanes can fly.

The Orient Express should be able to carry 300 to 500 passengers through space at Mach 25, making the flight from Tokyo to Washington in about two hours.



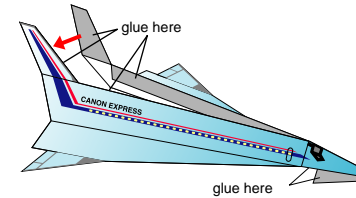
★Directions

* Items needed: one paper clip

Print out Page 1 and Page 2. Cut out all the parts, and fold along the mountain and valley fold lines.

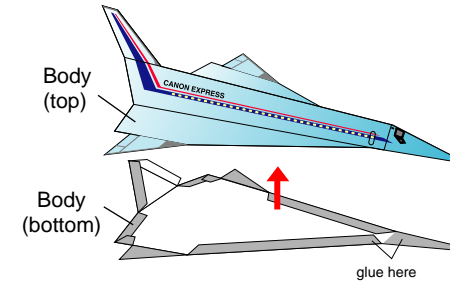
1. Assemble the upper body

Fold the body (top) along the mountain and valley fold lines, and glue it together as shown.



2. Assemble the body

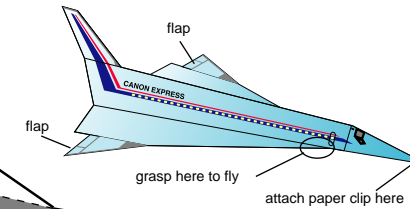
Glue the body (top) and body (bottom) together as shown.



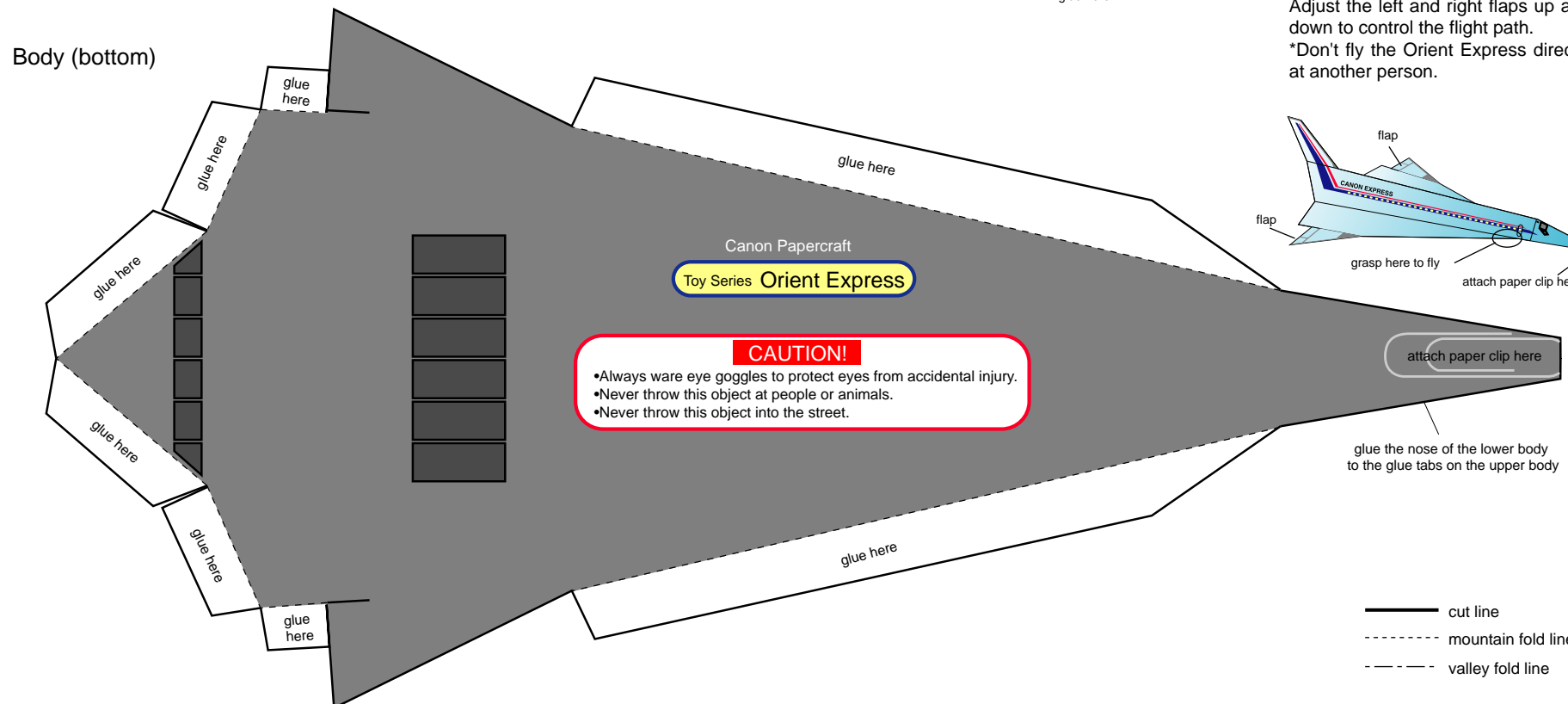
3. Attach weight to balance

After the glue is fully dry, clip a paper clip onto the nose of the Orient Express and give it a test flight! Adjust the left and right flaps up and down to control the flight path.

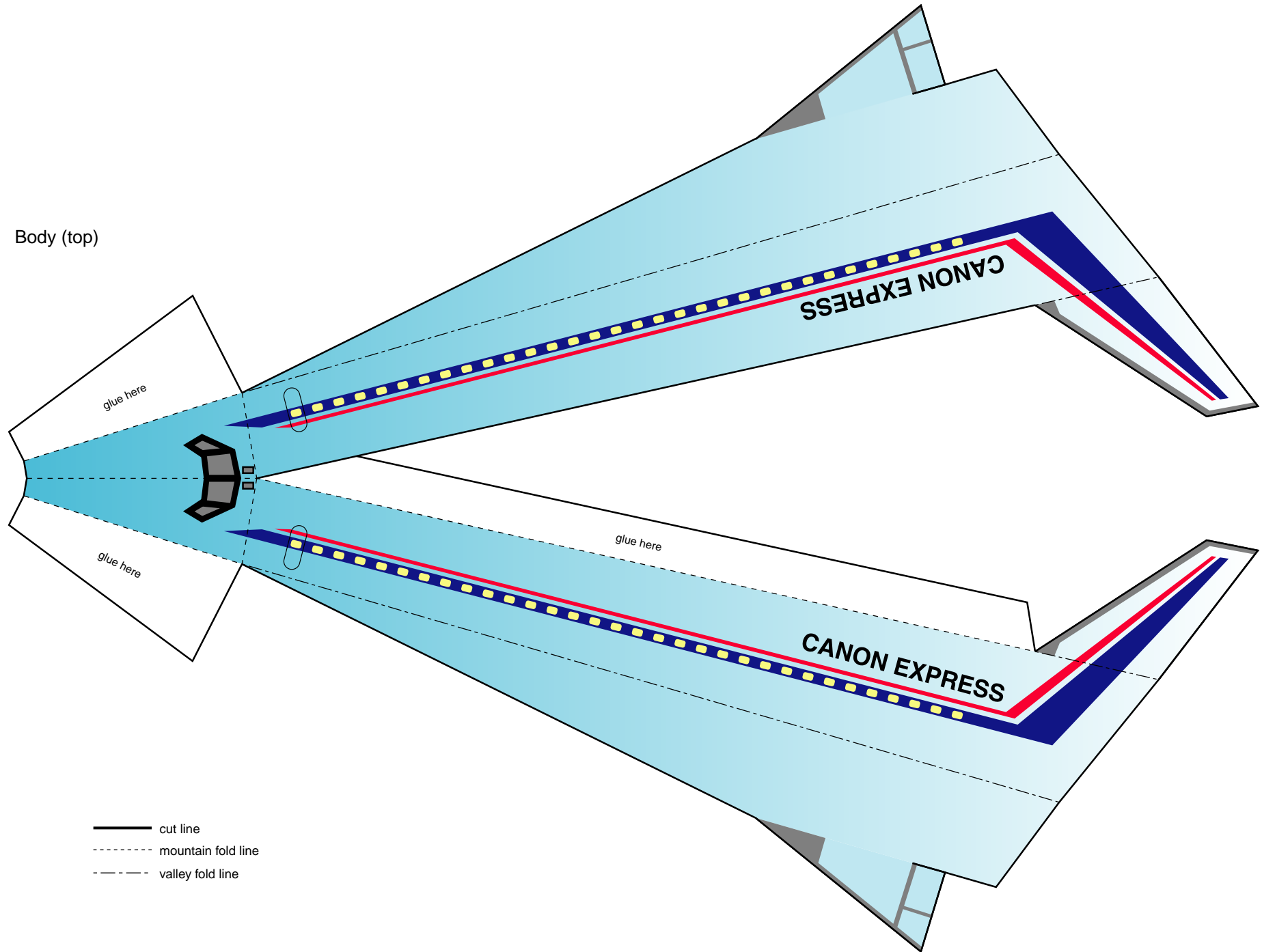
*Don't fly the Orient Express directly at another person.



* Cut out the card above and save it. You can collect the cards from each of the Papercraft projects to make your own mini-book!



Body (top)



- cut line
- - - mountain fold line
- · - valley fold line