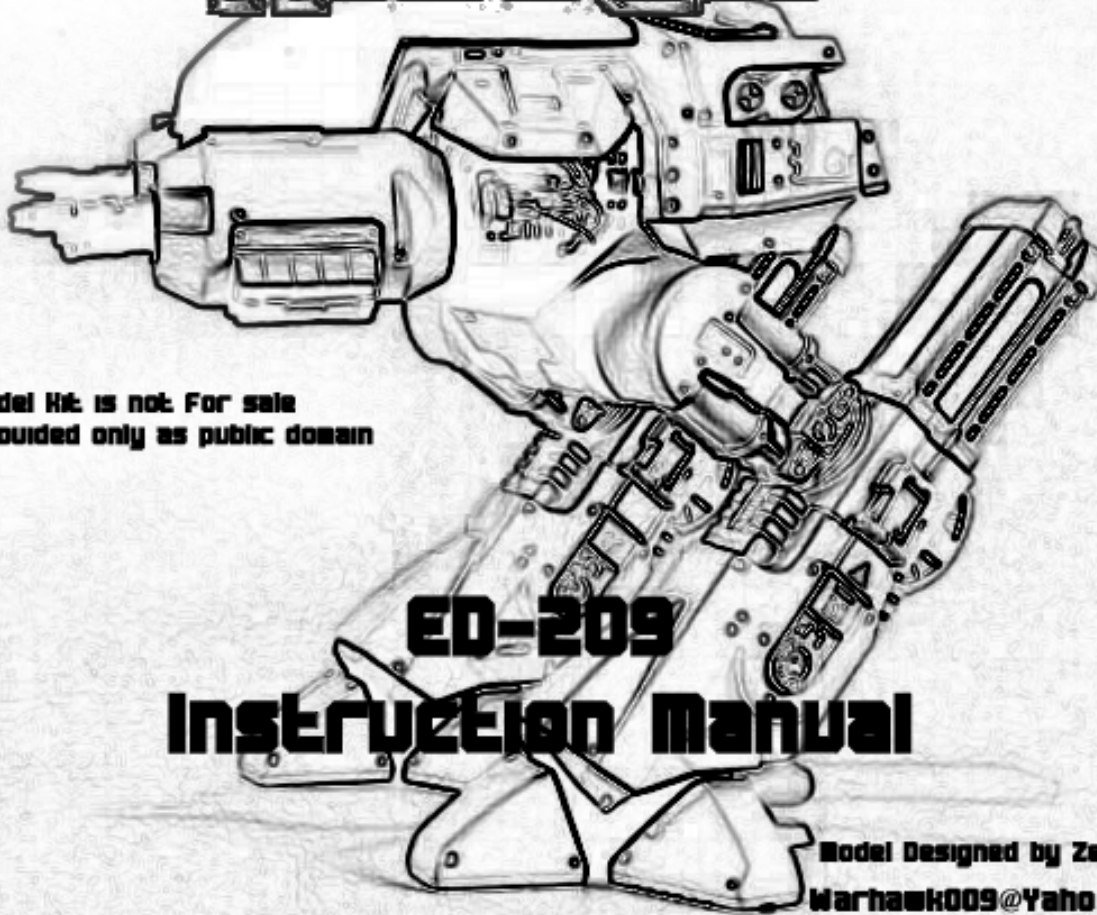


ROBOCOP



**This model kit is not for sale
It is provided only as public domain**

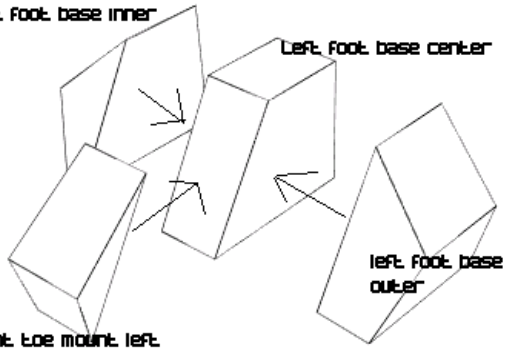
ED-209 Instruction Manual

**Model Designed by Zecks
Warhawk009@yahoo.com**

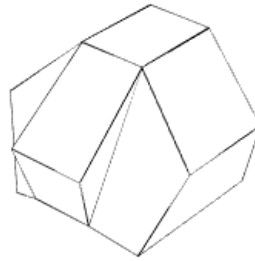
Robocop is a registered trademark of Orion pictures inc.

left foot base inner

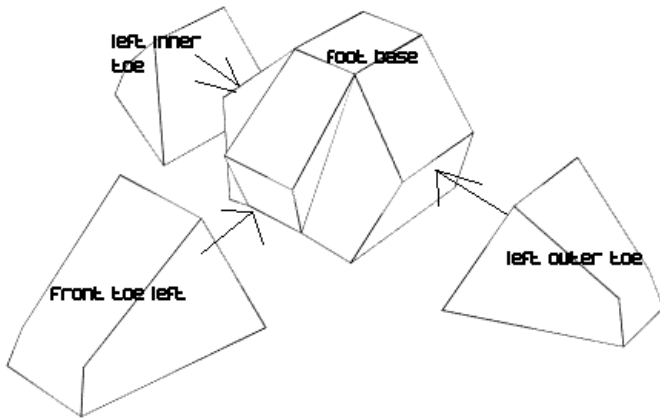
1.



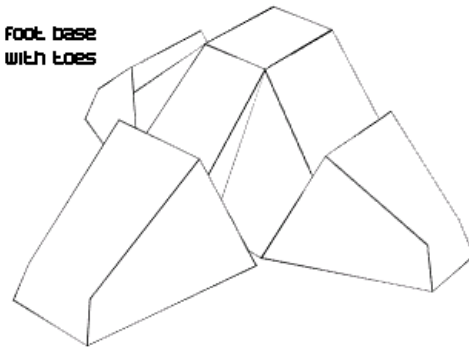
completed foot base



2.

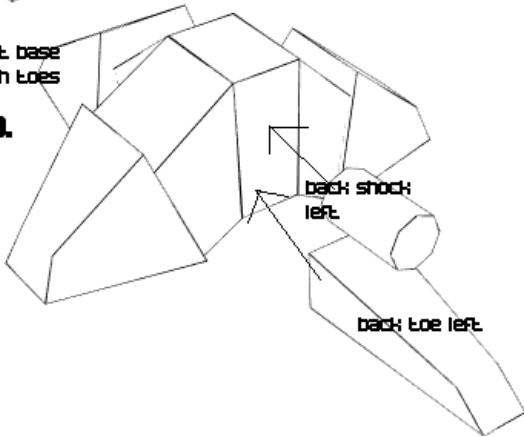


foot base with toes

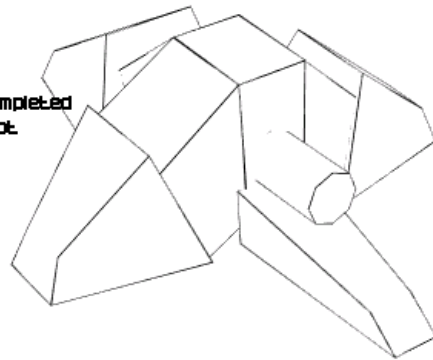


foot base with toes

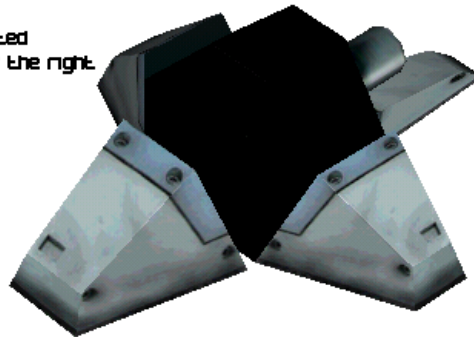
3.



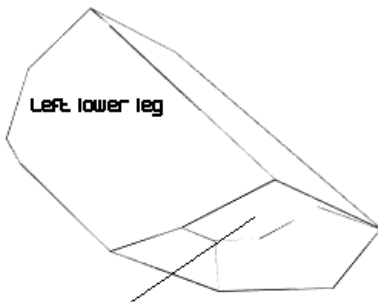
completed foot



Left foot is completed
Repeat process for the right foot.

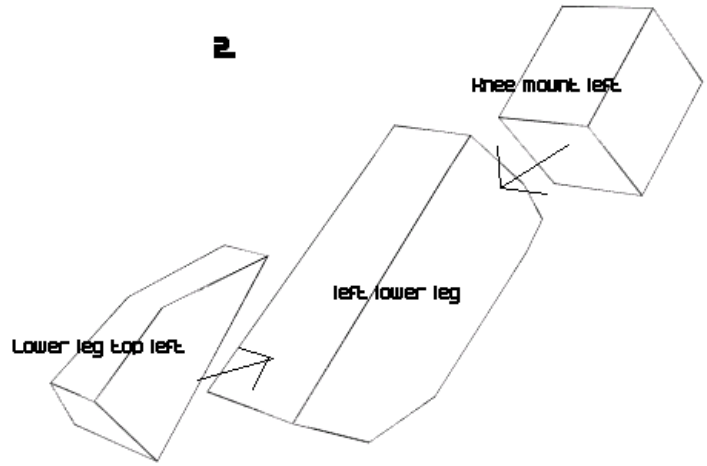


1.

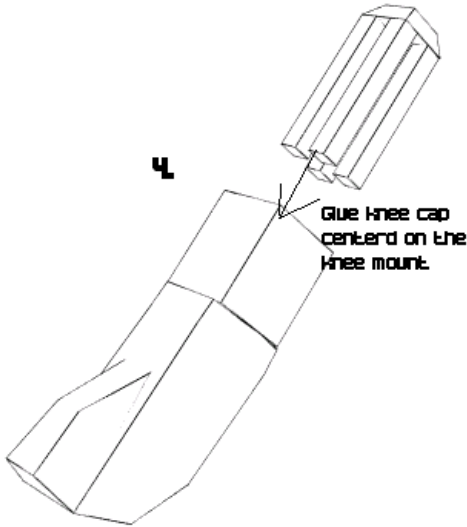


Fold bottom of lower leg inside it self making a small pocket, this is where the foot connects to the lower leg

2.

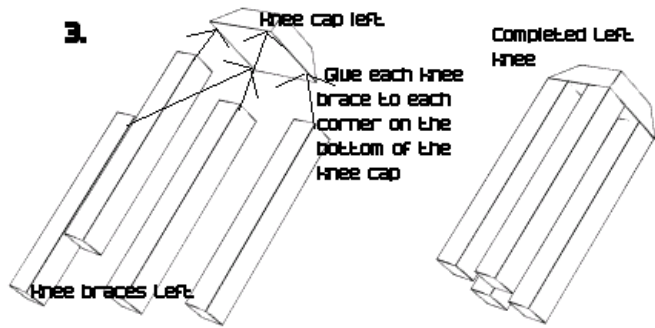


4.



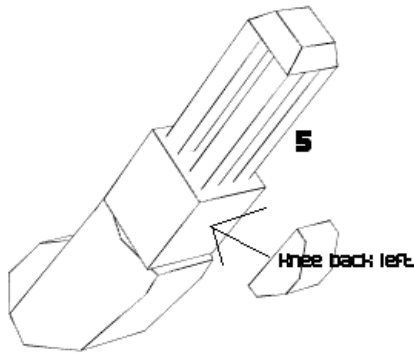
Glue knee cap centered on the knee mount.

3.



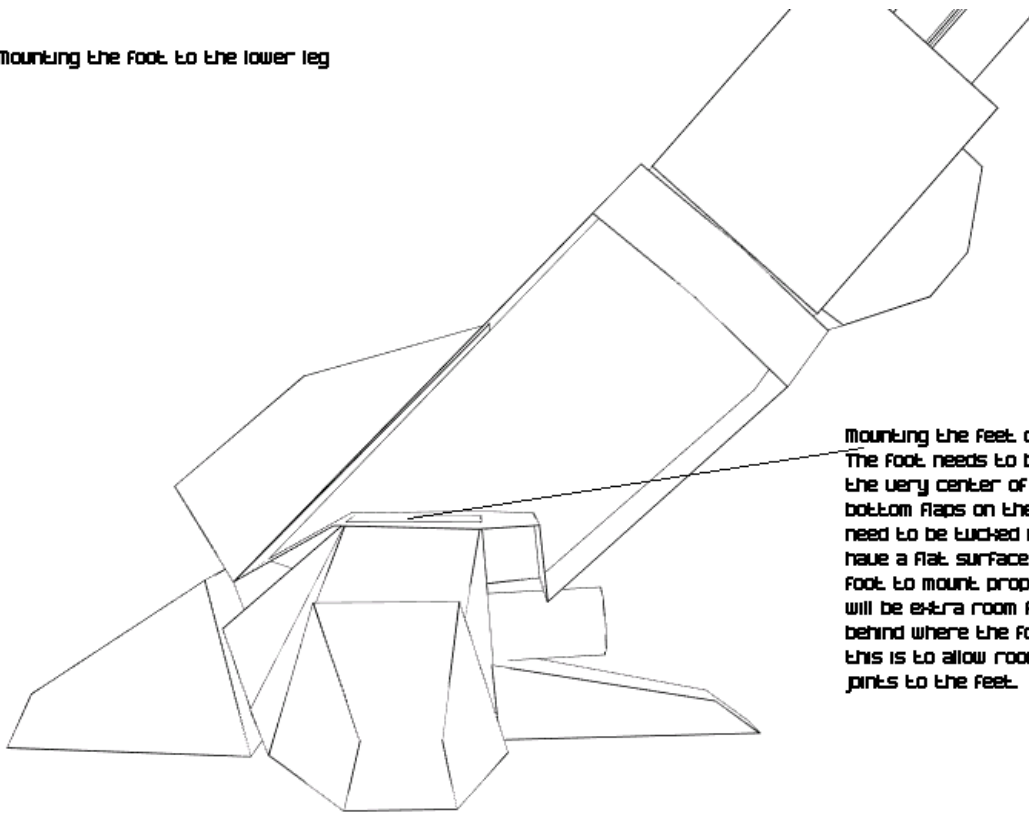
Glue each knee brace to each corner on the bottom of the knee cap

5.



Completed lower leg and knee

Mounting the foot to the lower leg



Mounting the feet can be tricky. The foot needs to be mounted in the very center of the leg. The bottom flaps on the lower leg need to be tucked inward and have a flat surface to allow the foot to mount properly. There will be extra room front and behind where the foot mounts. This is to allow room for modified joints to the feet.

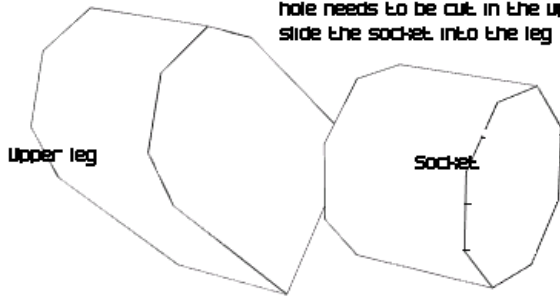


Completed foot and leg

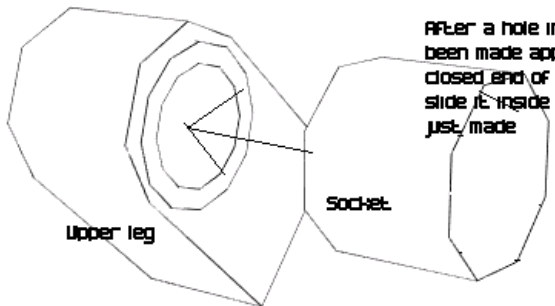
Upper leg and socket.

The upper leg is another tricky task of assembling this model. In order to mount the upper leg to the hips successfully a hole needs to be cut in the upper leg to slide the socket into the leg

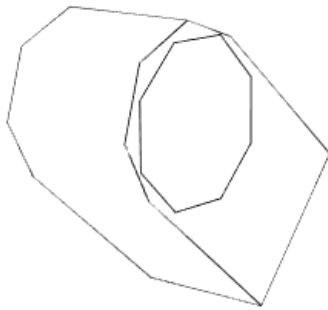
1.



2.



After a hole in the leg has been made apply glue to the closed end of the socket and slide it inside of the hole you just made

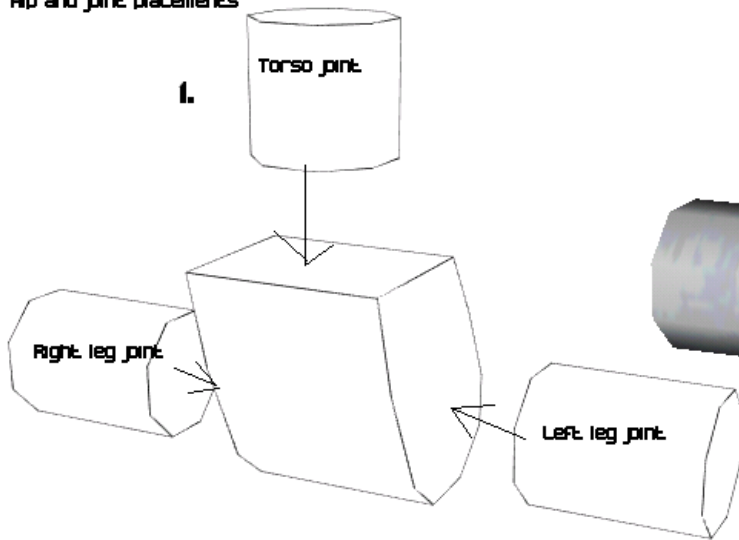


3.

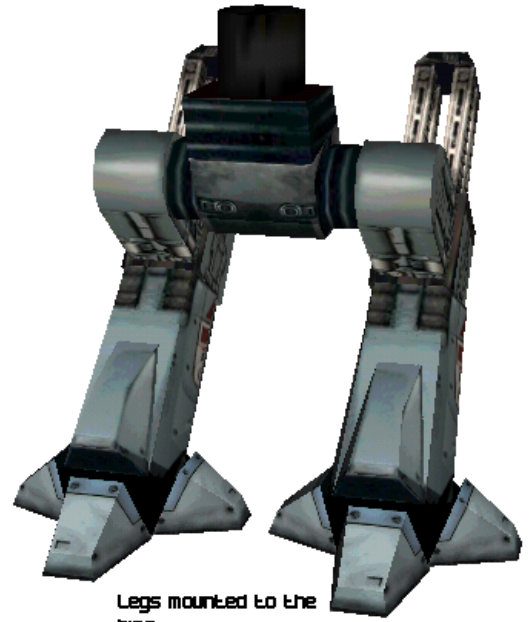
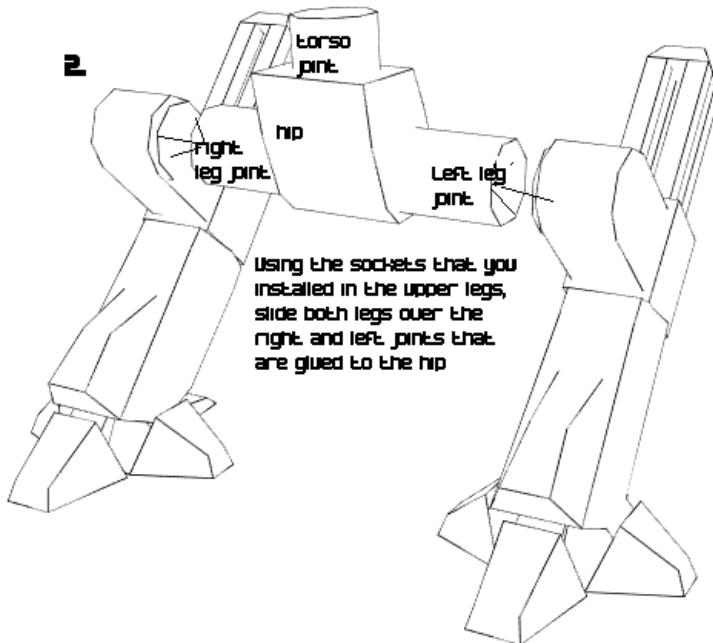


After the socket is installed mount the upper leg to the lower leg

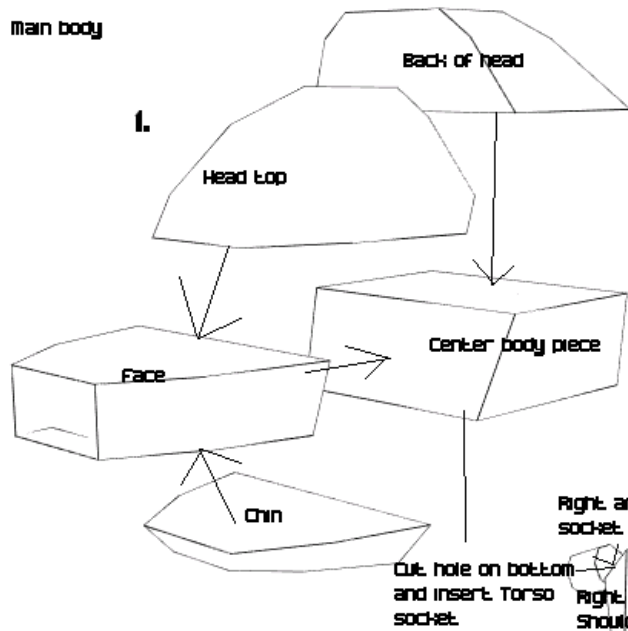
Hip and joint placements



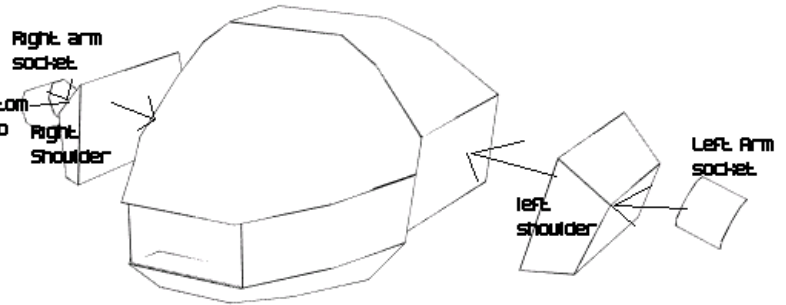
mounting the legs



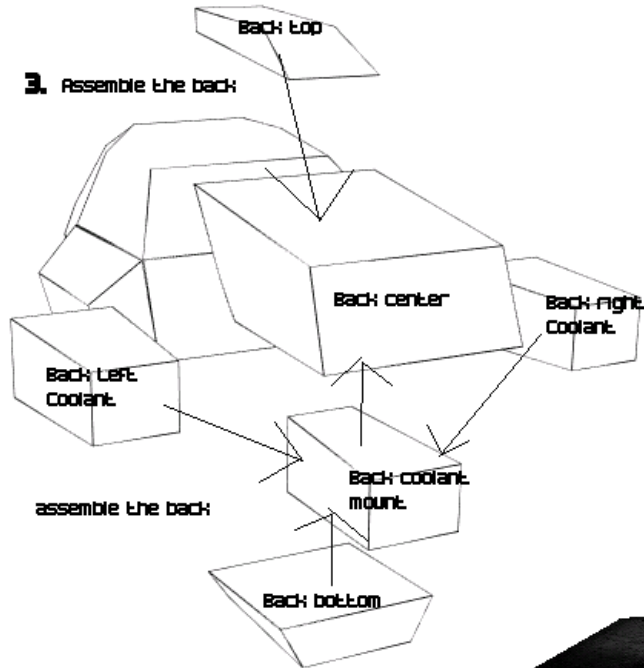
main body



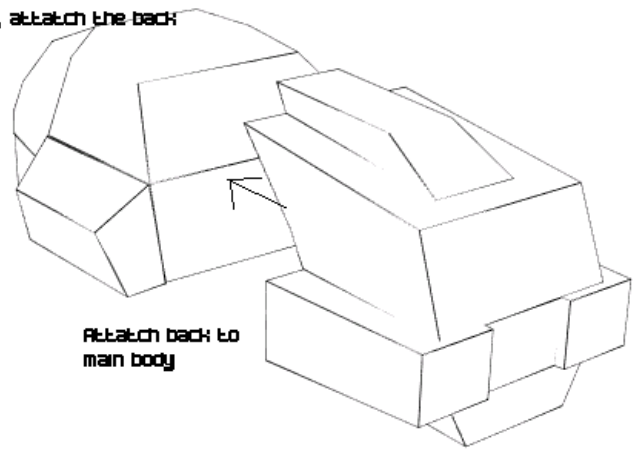
2. Cut holes in each shoulder and fit the sockets inside each shoulder. Do this the same way as the upper leg. Then attach the shoulder to the center body piece.



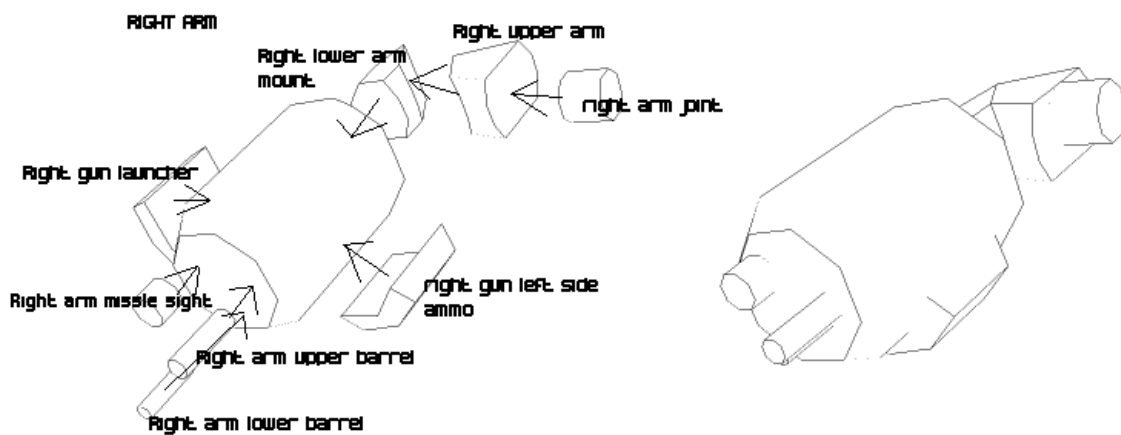
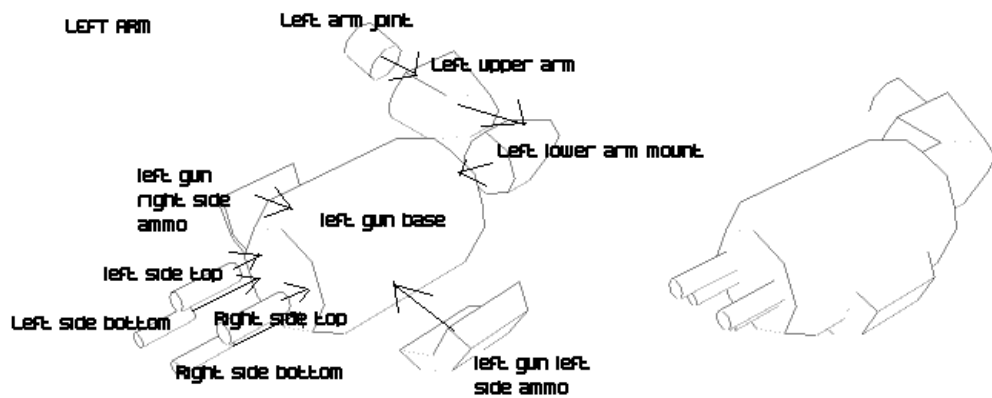
3. Assemble the back:

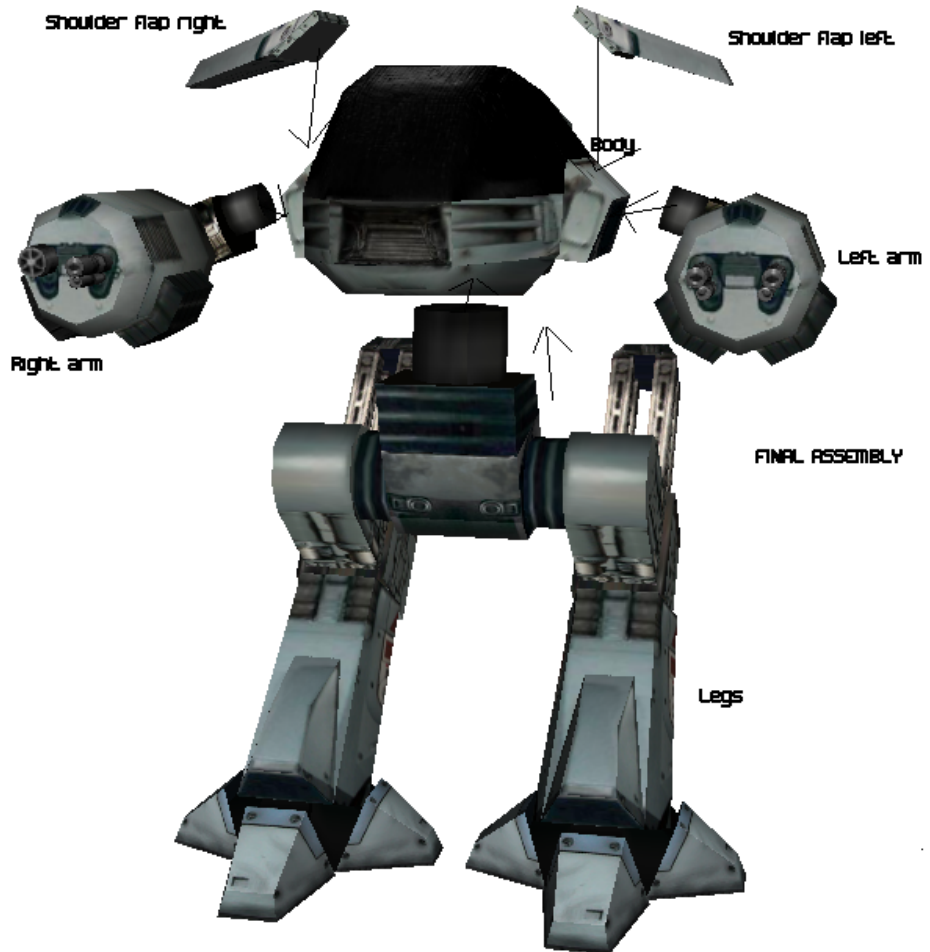


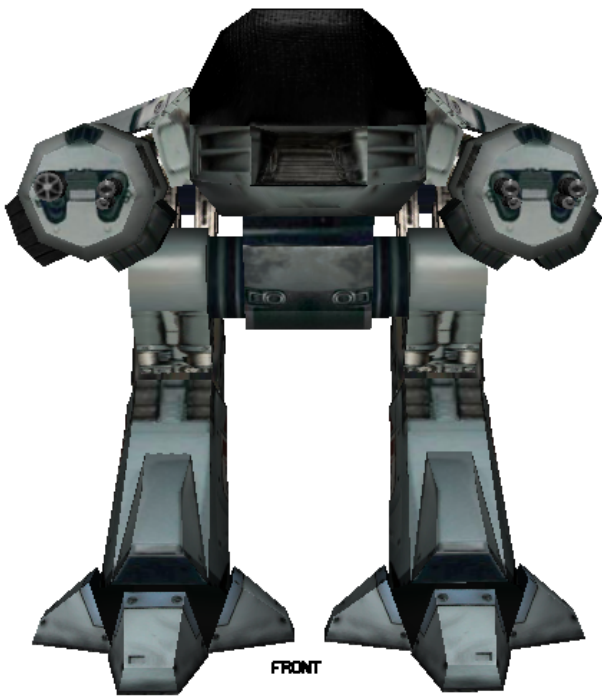
4. Attach the back:



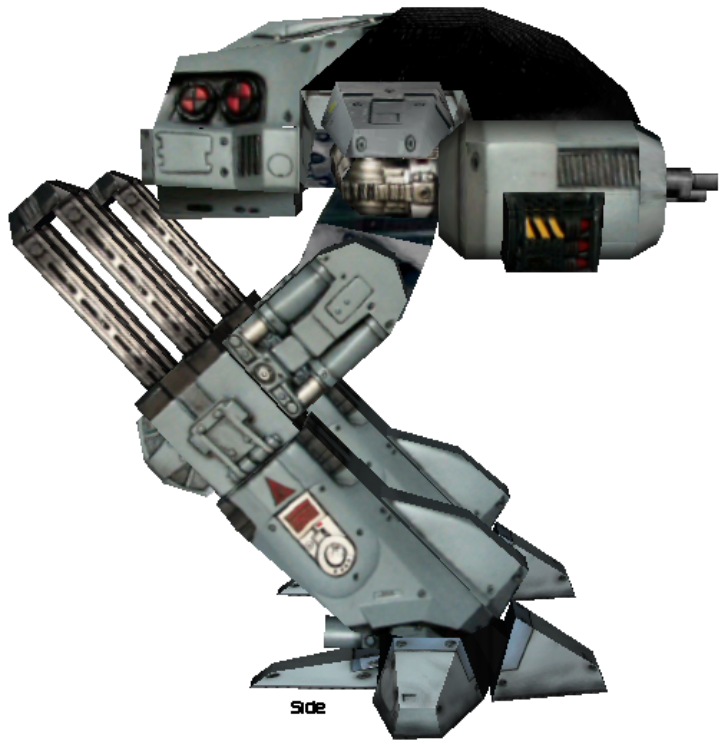
Completed body



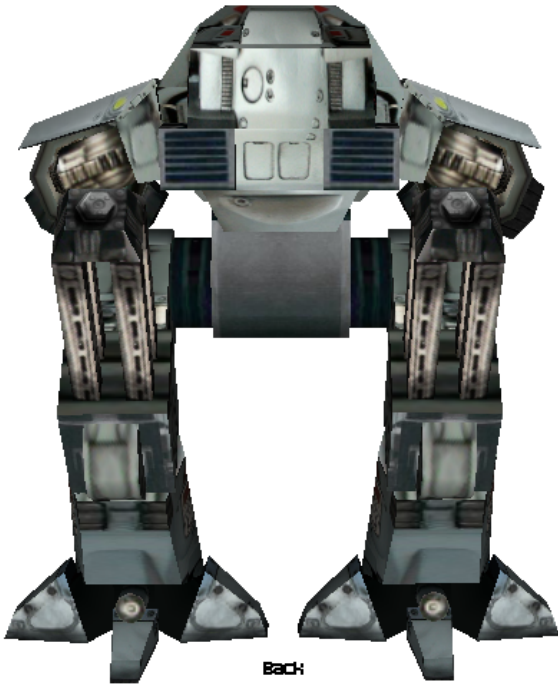




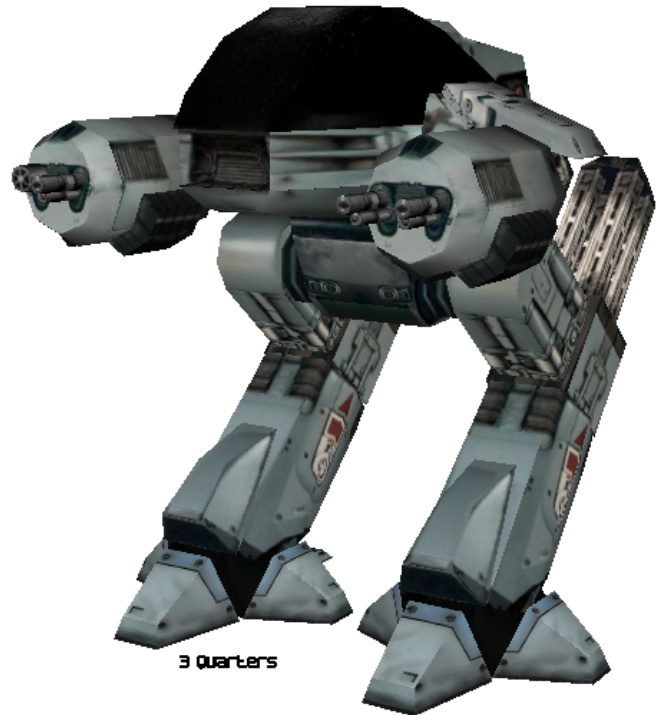
FRONT



Side



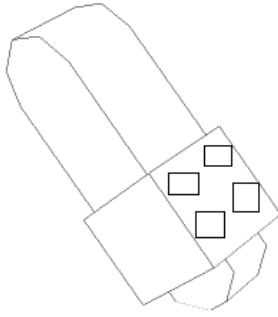
Back



3 Quarters

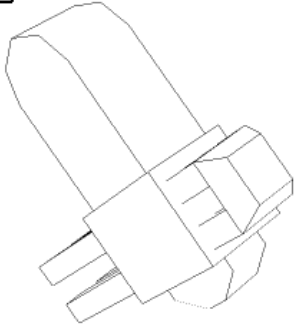
MOUNTING EXTENDED KNEE BRACES

1

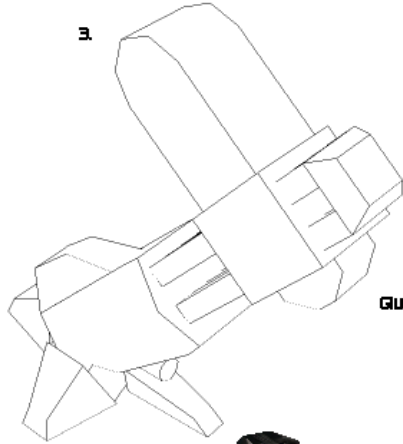


Cut holes through both sides of the knee mount and slide the extended braces through the holes

2



3



Glue knee braces to the lower leg



Knee mount slides along braces to create walking effect