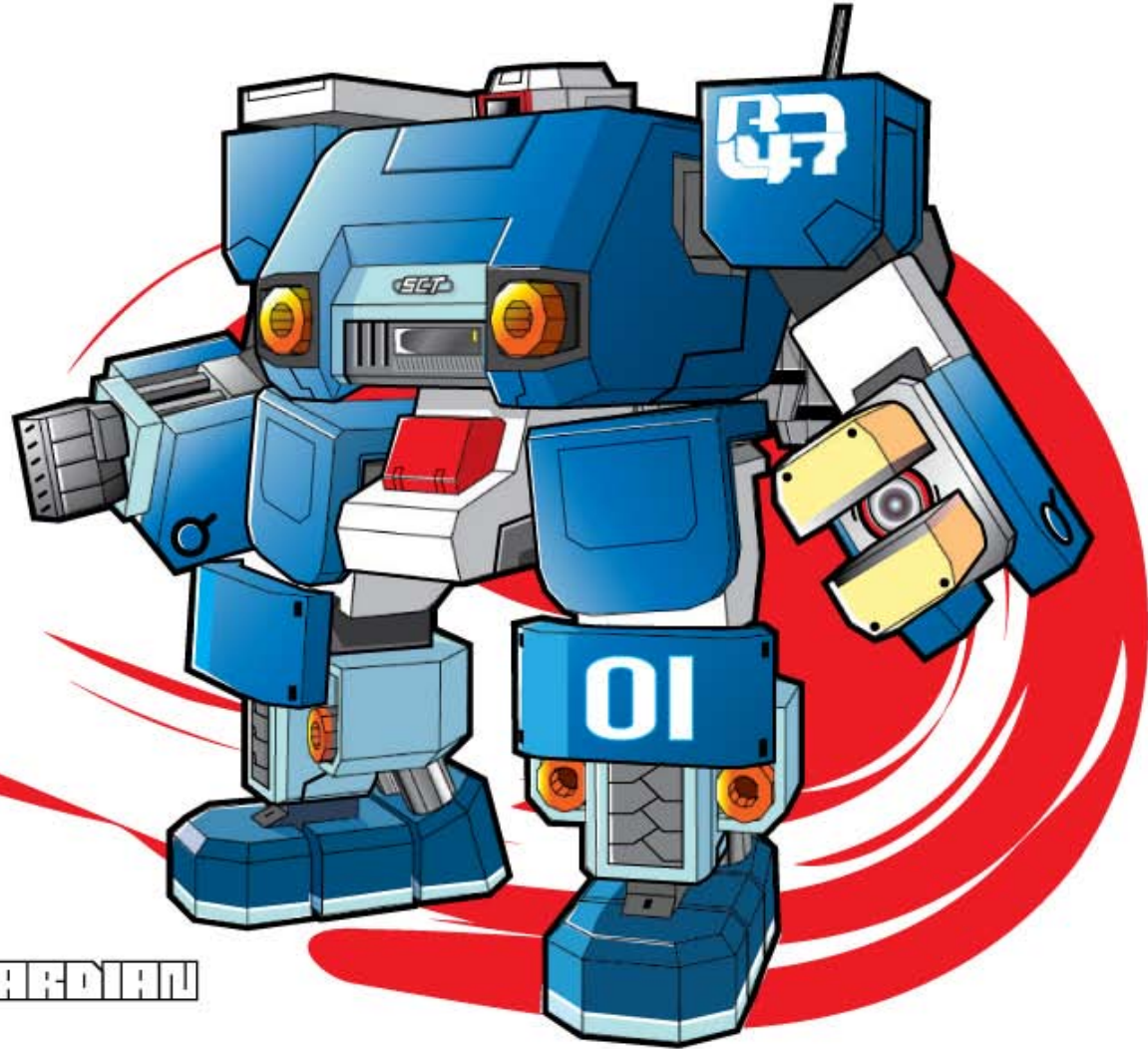




par adiusstudio. Thail and.

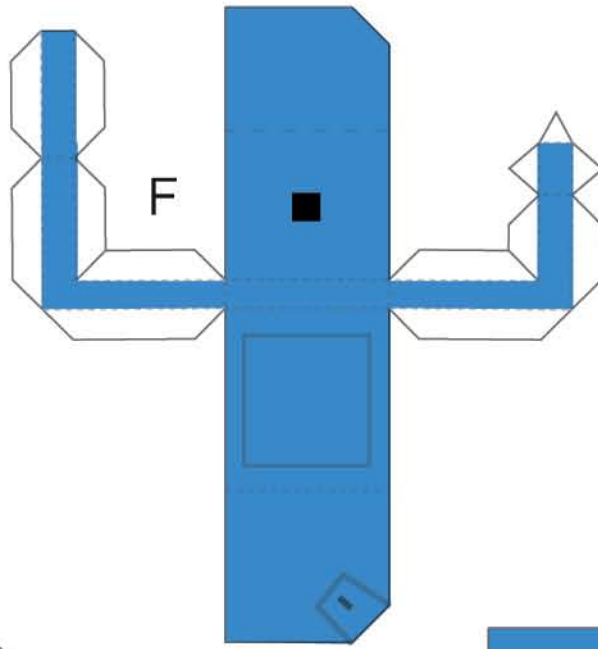
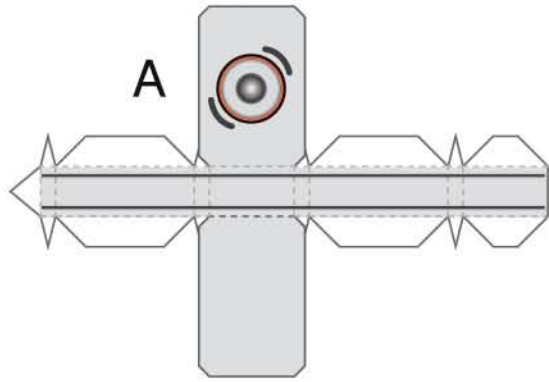
<http://paradius.spaces.live.com/> - p_online@hotmail.com



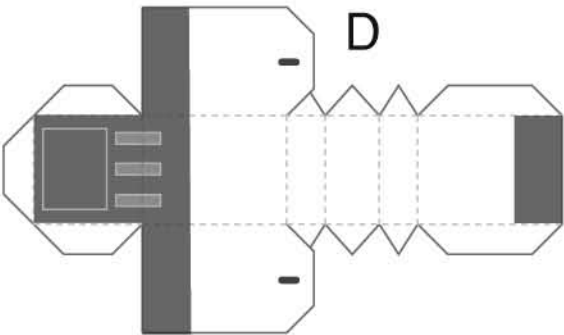
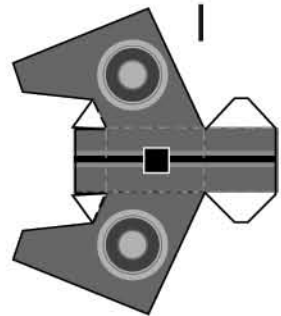
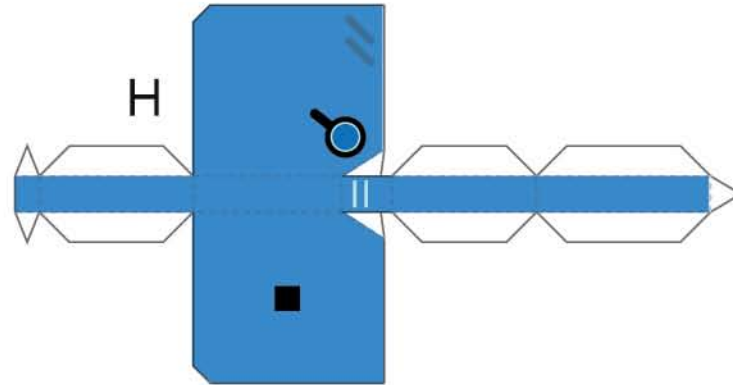
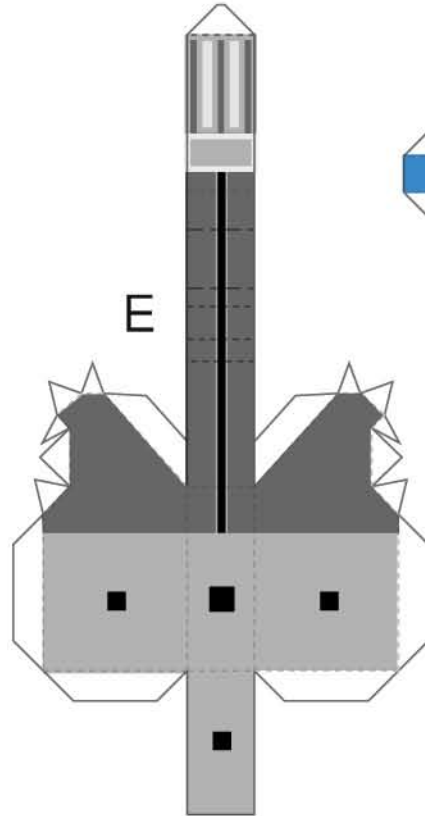
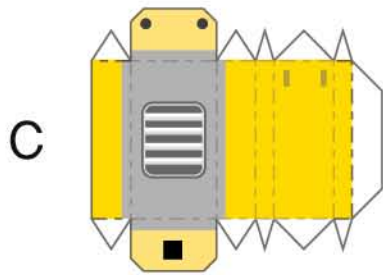
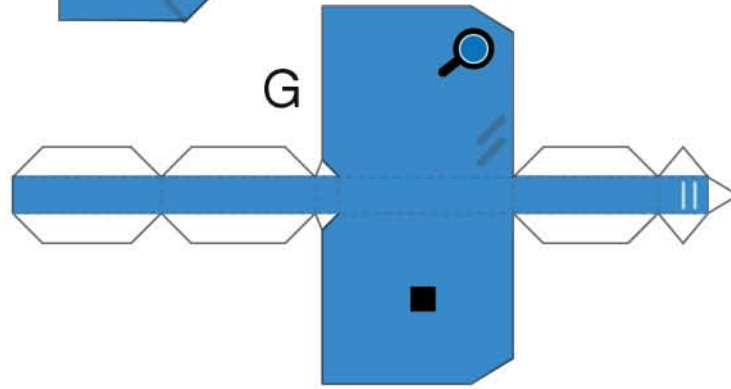
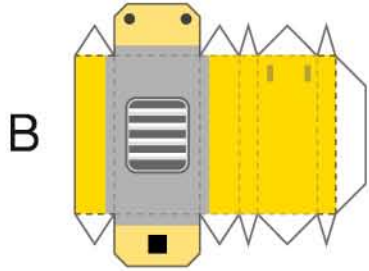
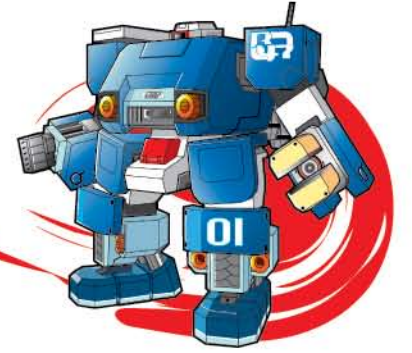
IRON GUARDIAN



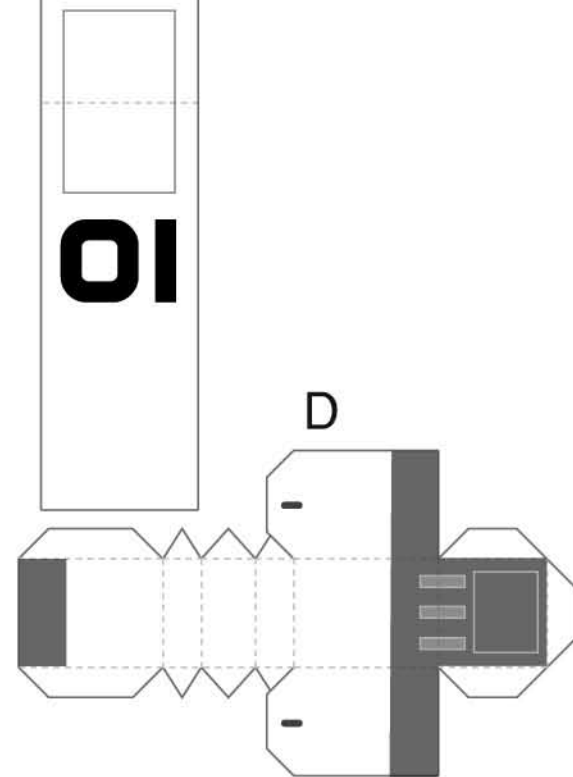
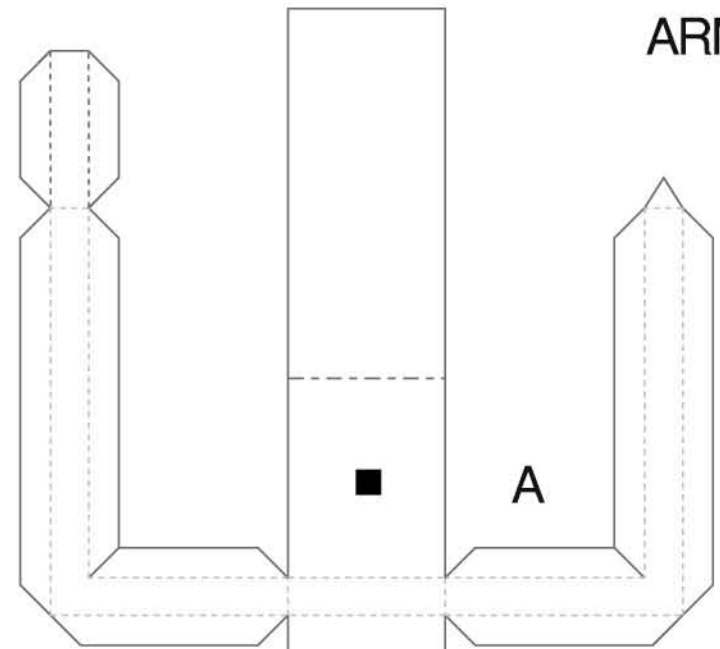
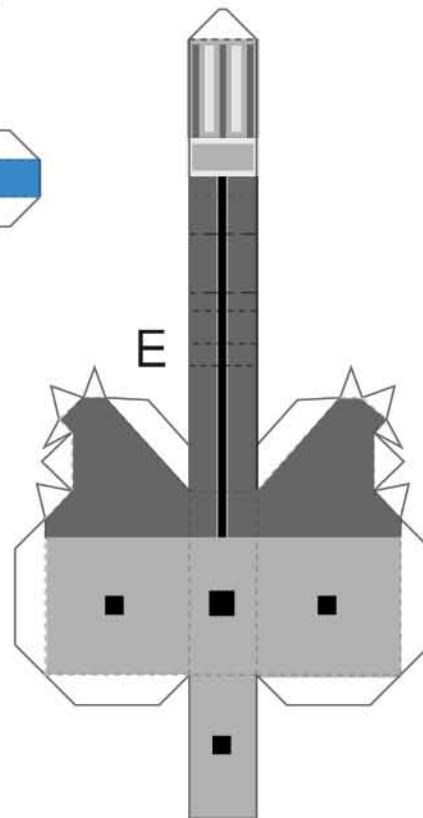
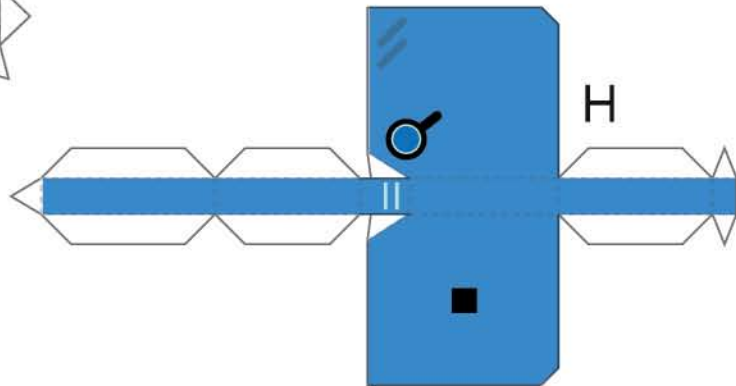
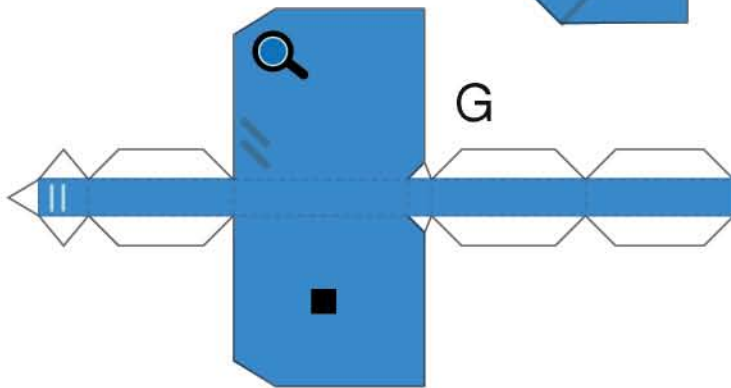
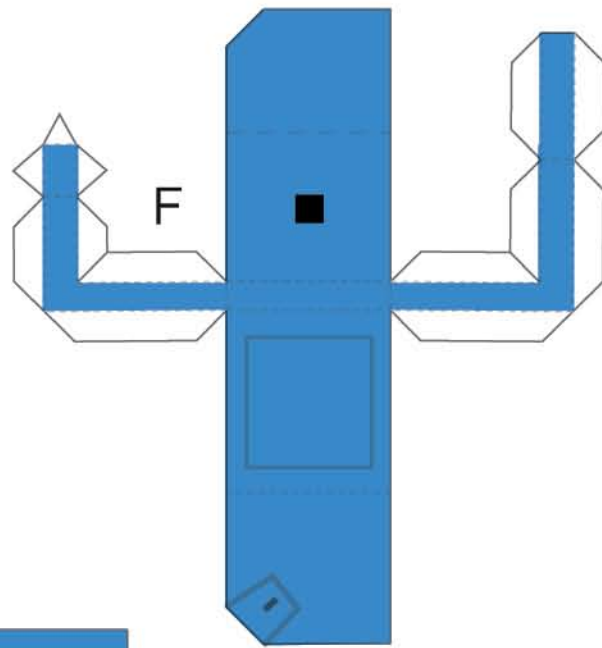
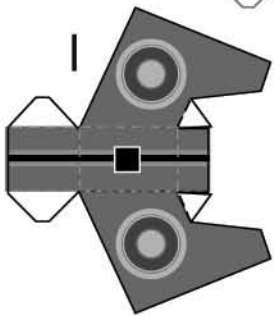
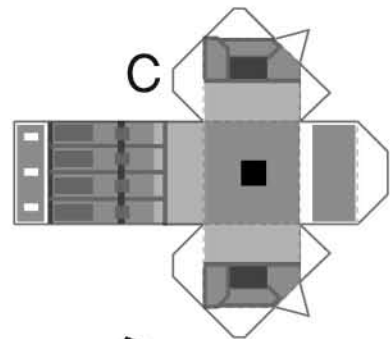
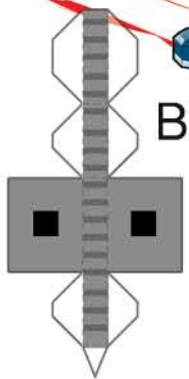
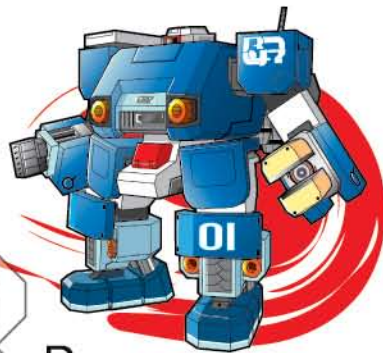
ARM-A



SCT
MECHANIC
RESCUE TEAM
No. 47

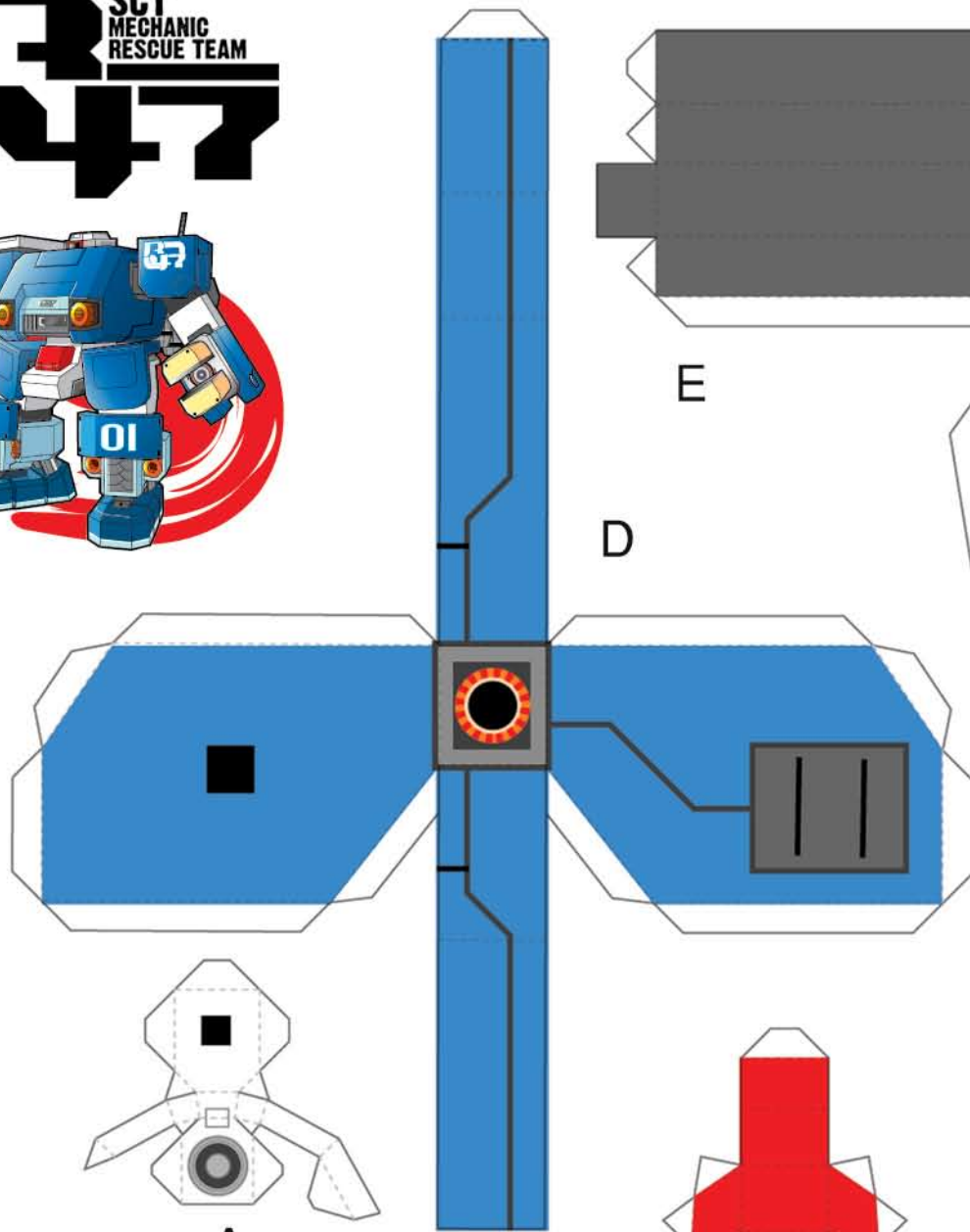


SCT
MECHANIC
RESCUE TEAM
No. **47**

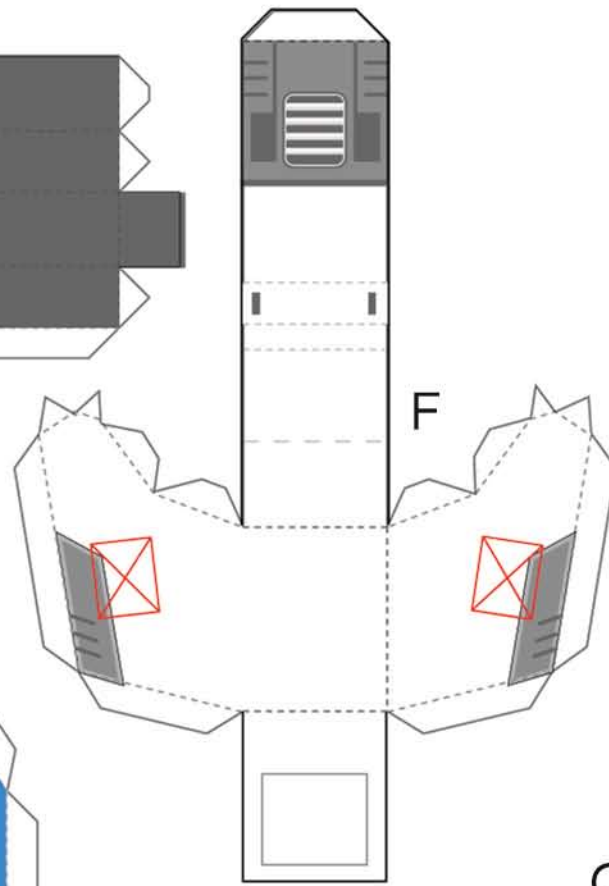


ARM-B

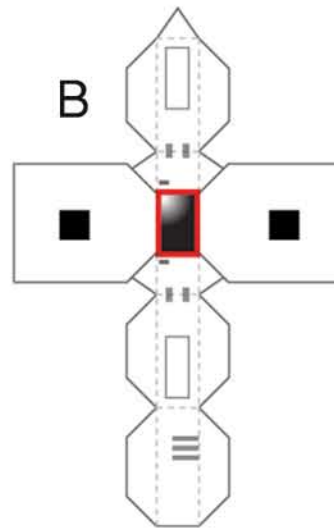
SCT
MECHANIC
RESCUE TEAM
No. **47**



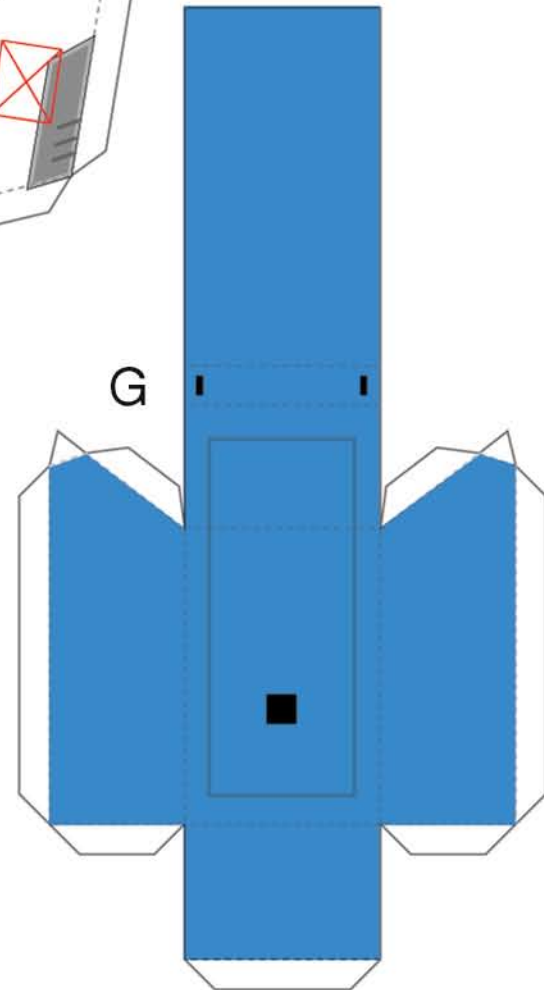
E



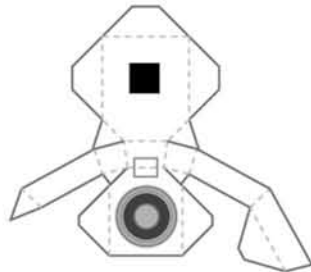
F



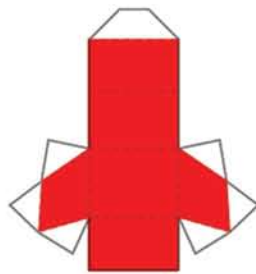
B



G



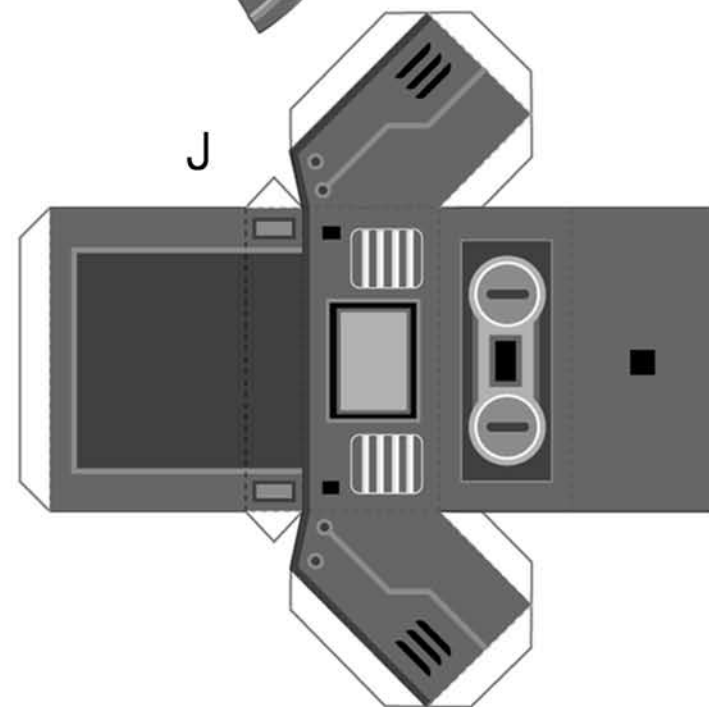
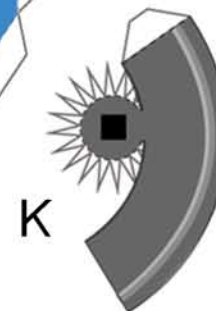
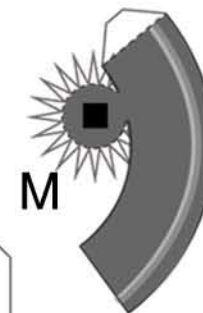
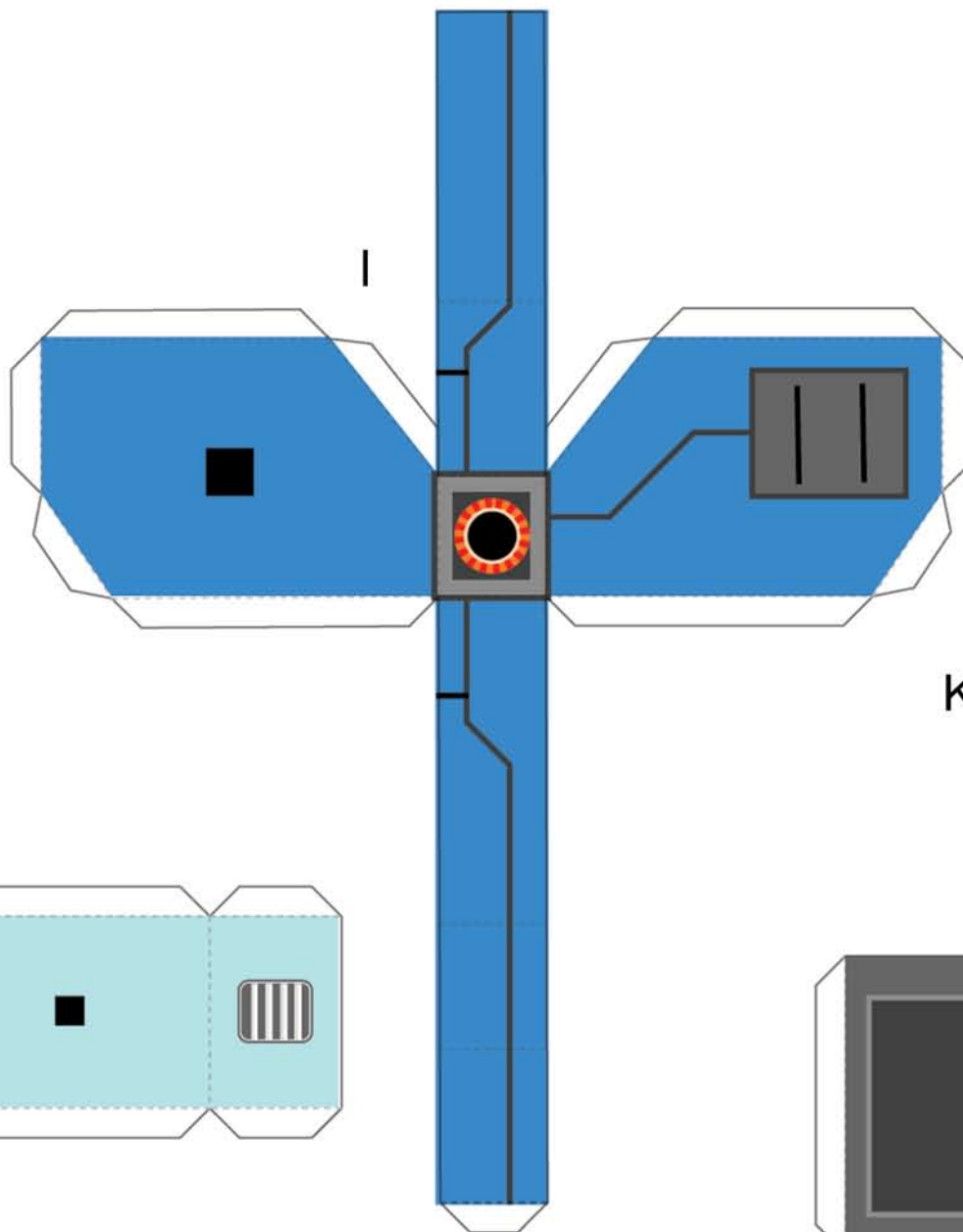
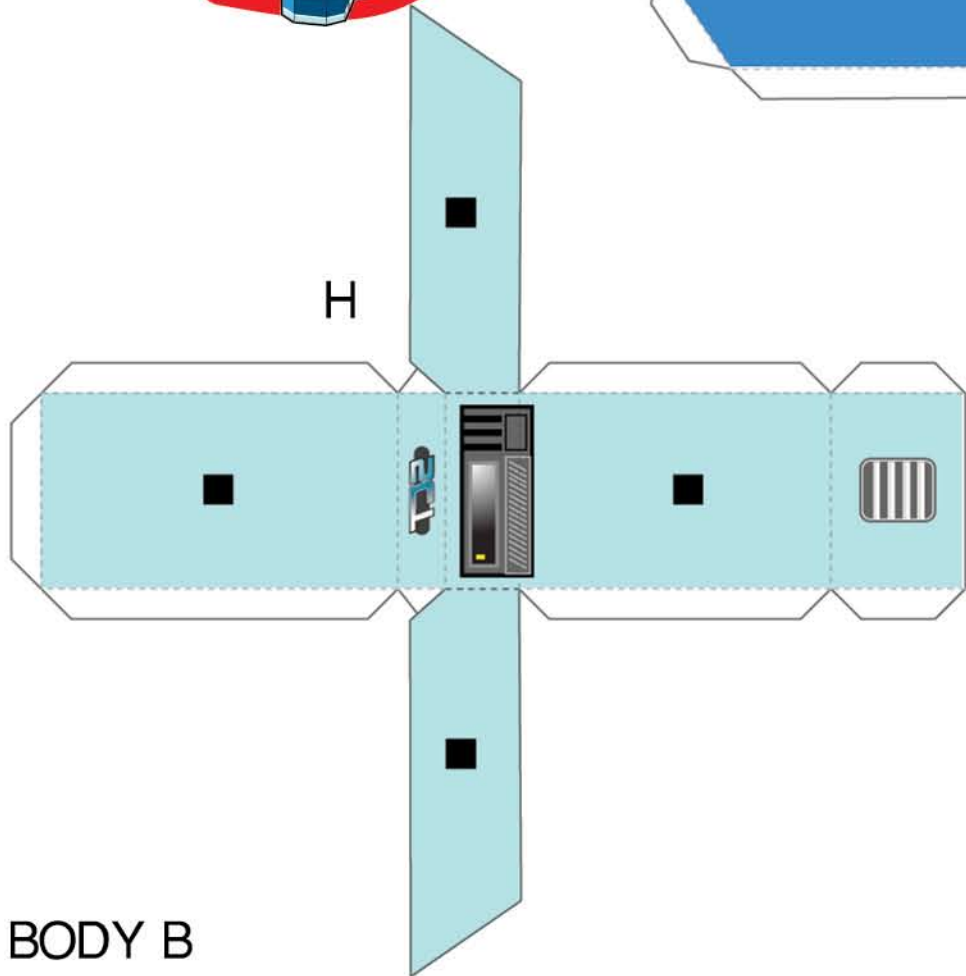
A



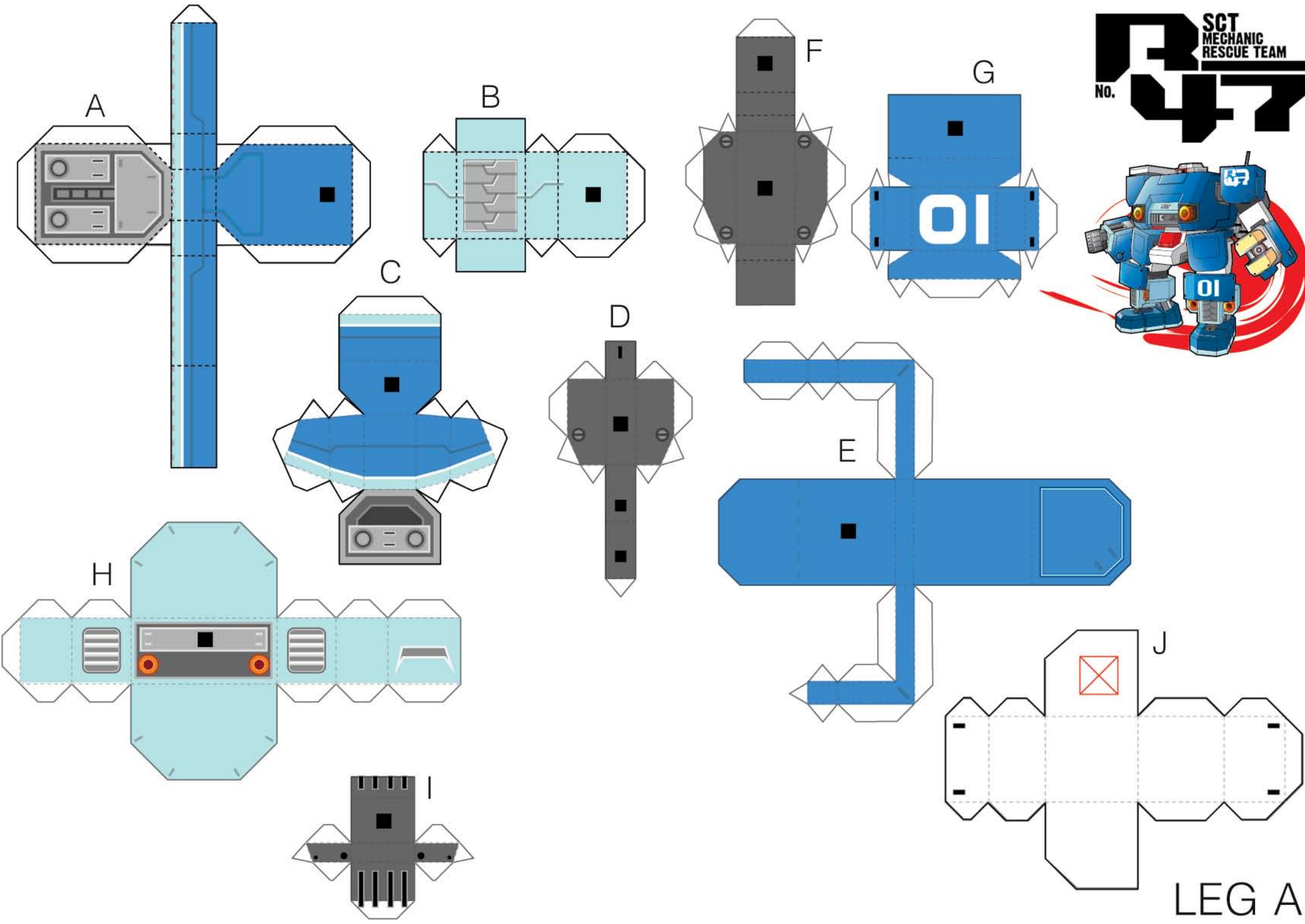
C

BODY A

SCT
MECHANIC
RESCUE TEAM
No. **47**

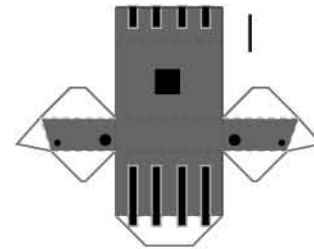
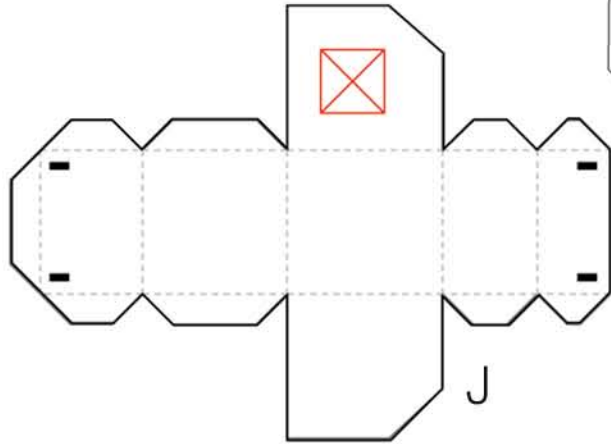
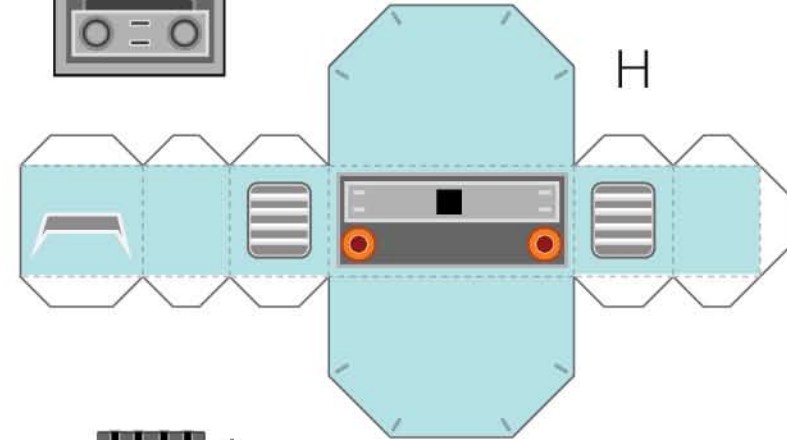
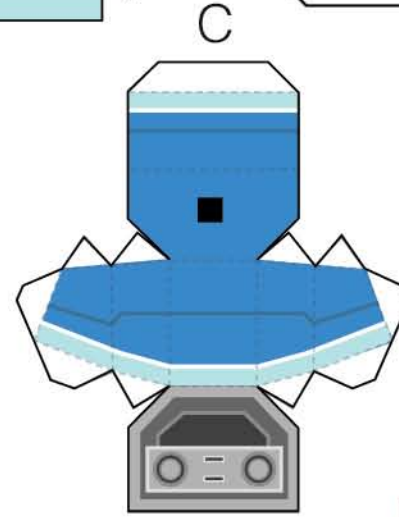
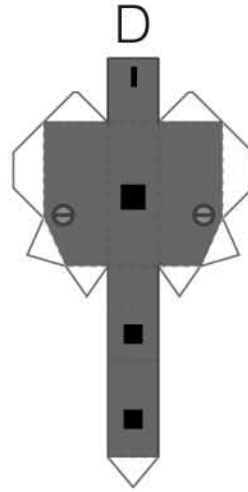
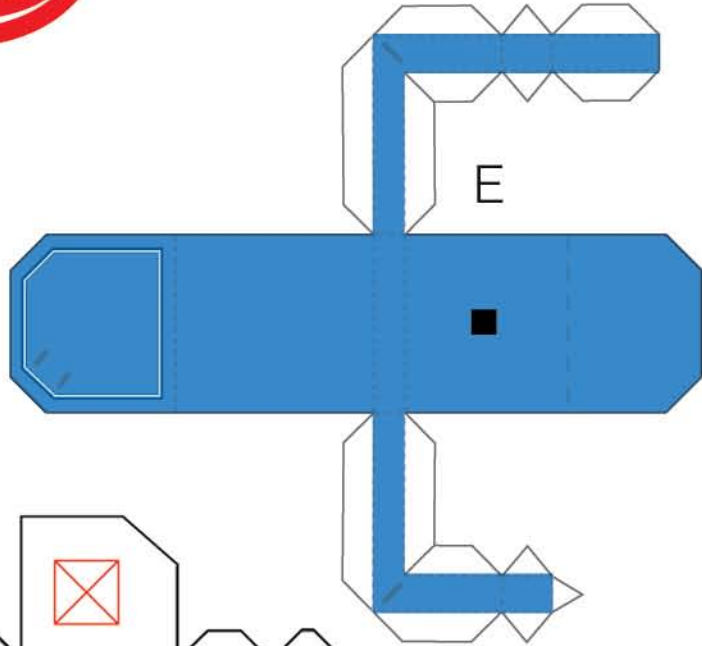
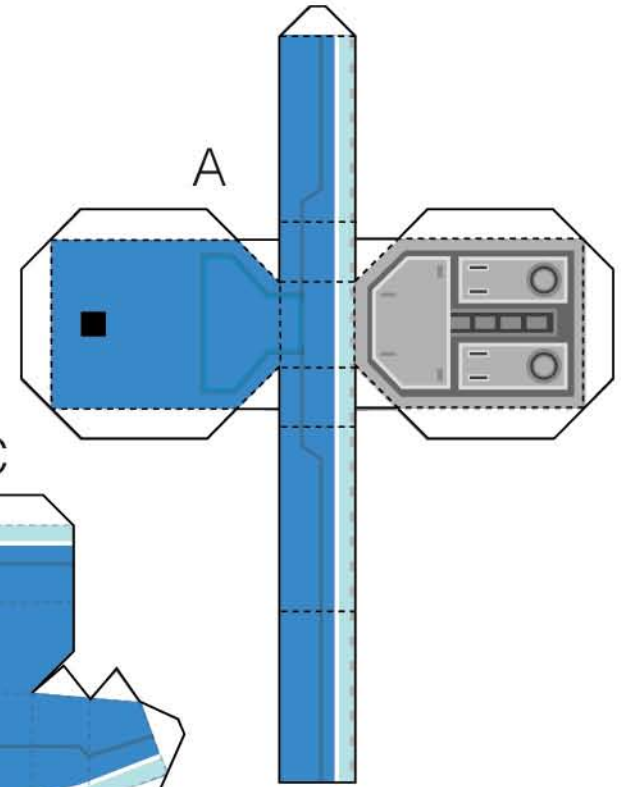
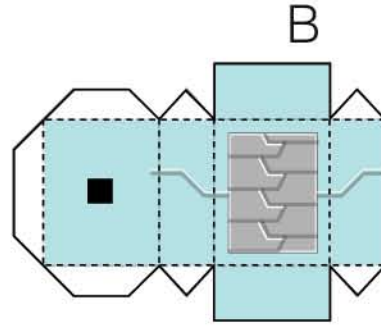
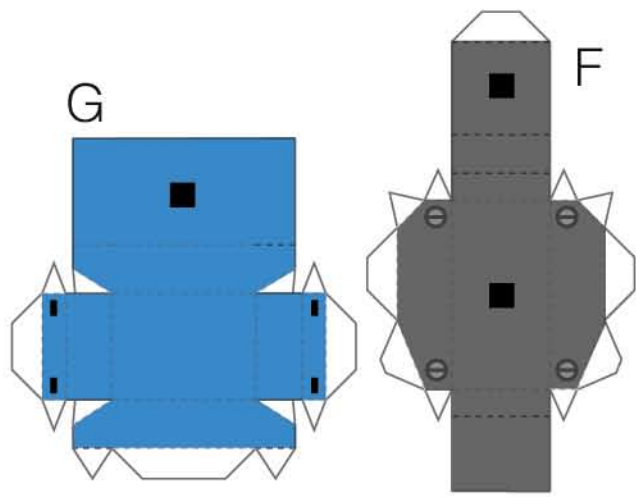
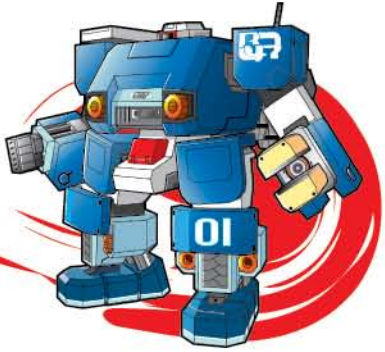


BODY B



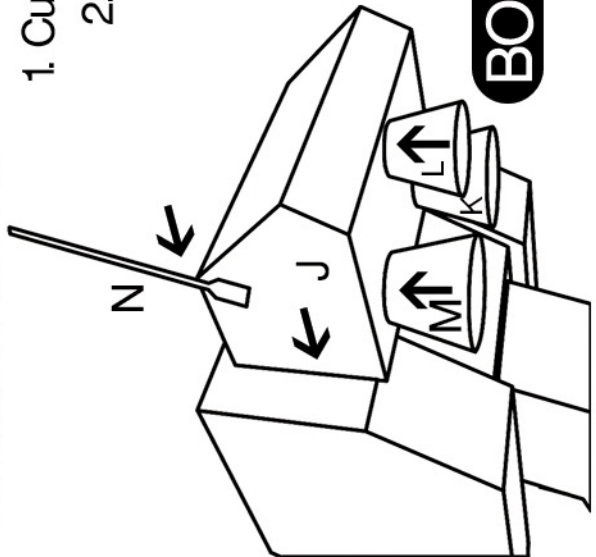
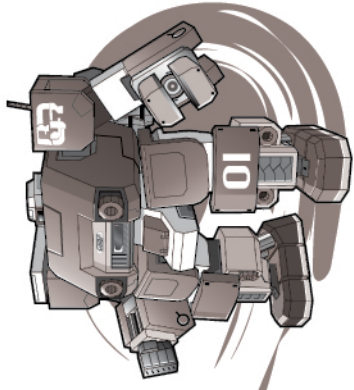
LEG A

SCT
MECHANIC
RESCUE TEAM
No. **47**

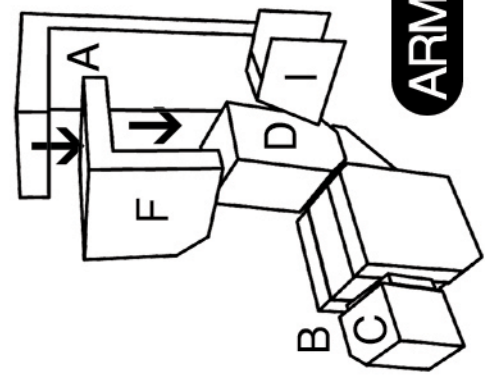


LEG B

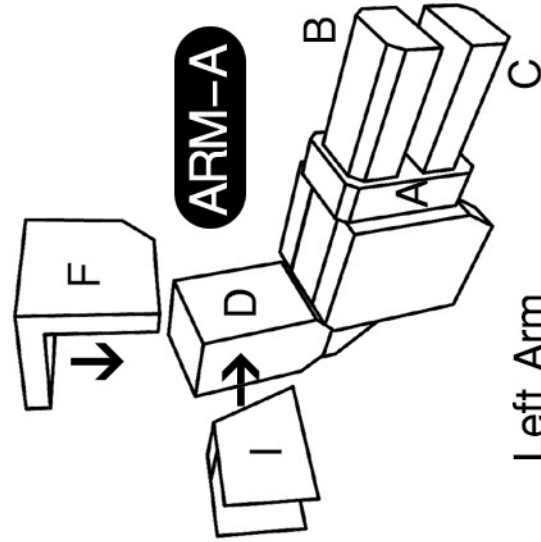
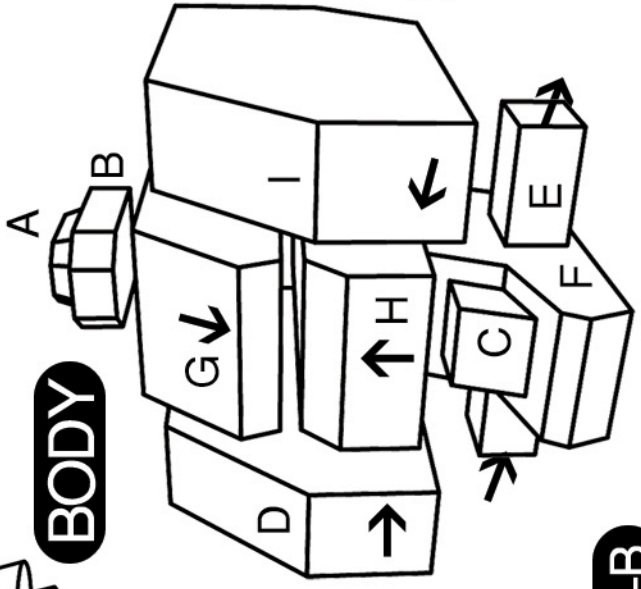
1. Cut the part
2. Fold every dot line
3. Glue on black square side
4. Enjoy!



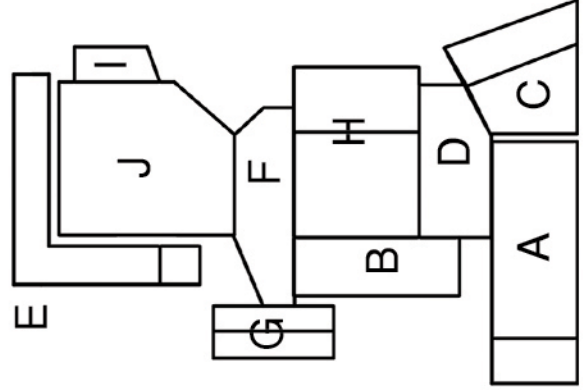
BODY



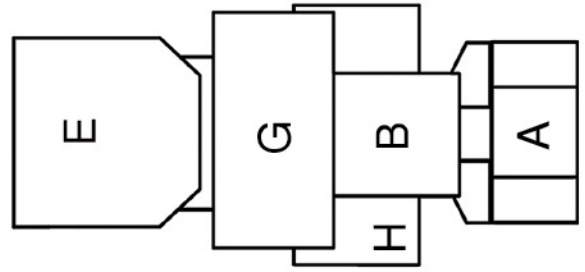
ARM-B



ARM-A

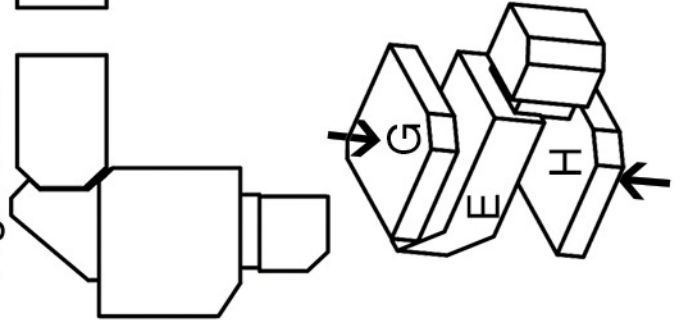


Side

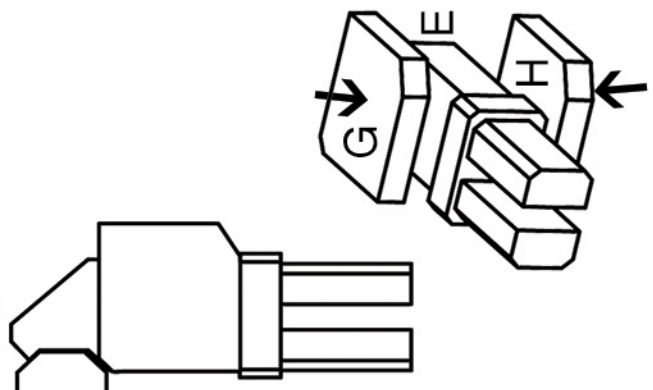


Front

Right Arm



Left Arm



LEG