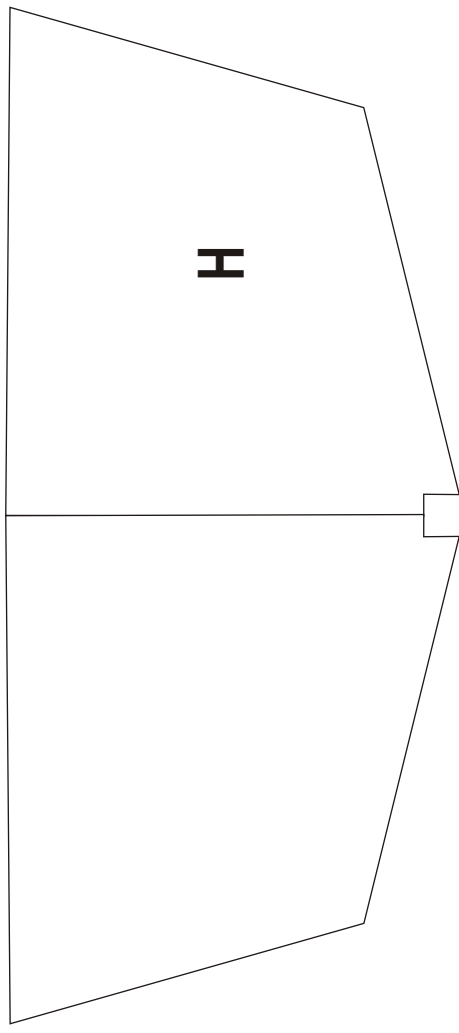
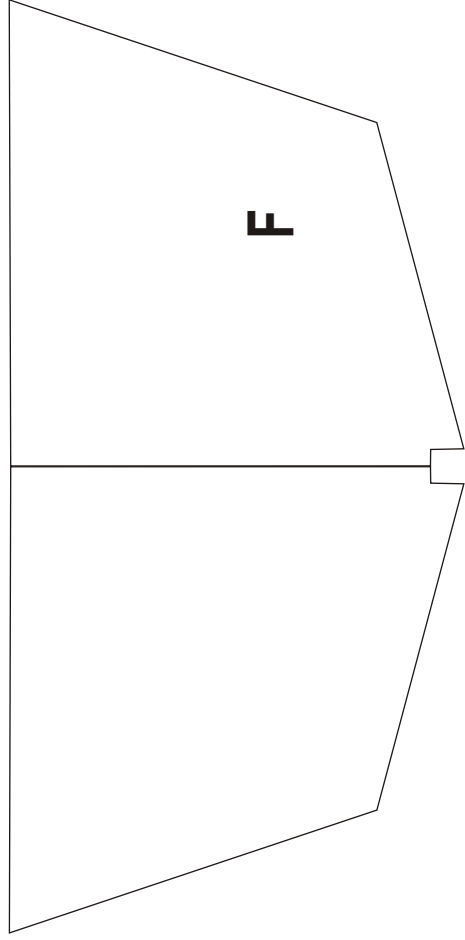
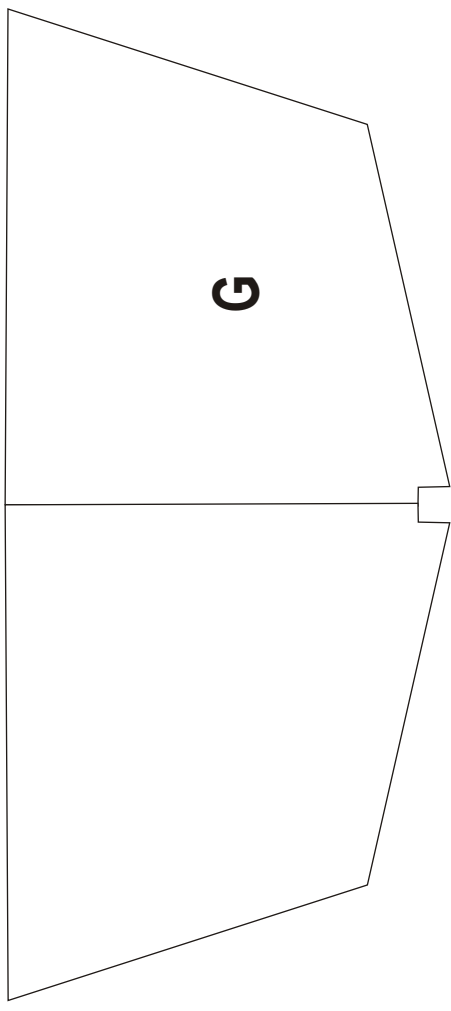
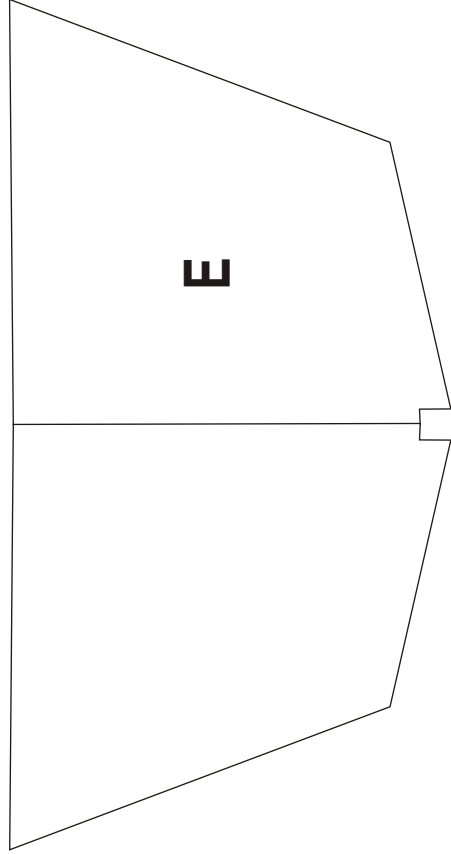
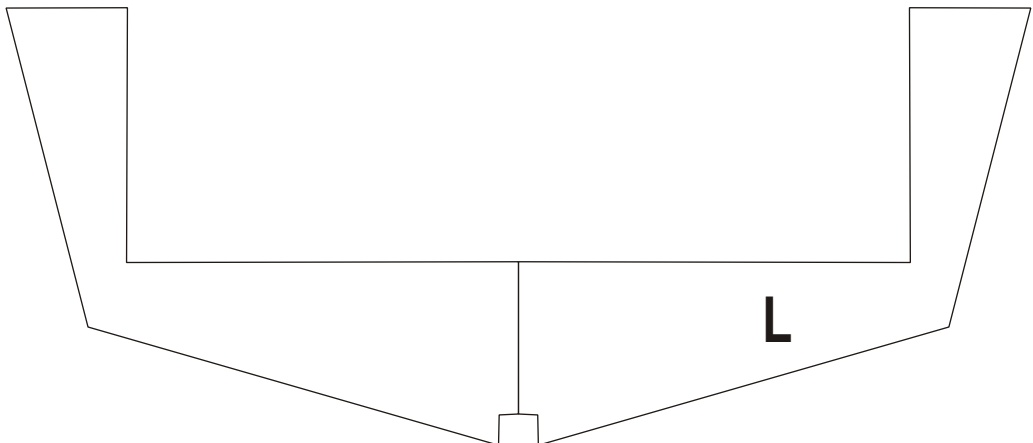
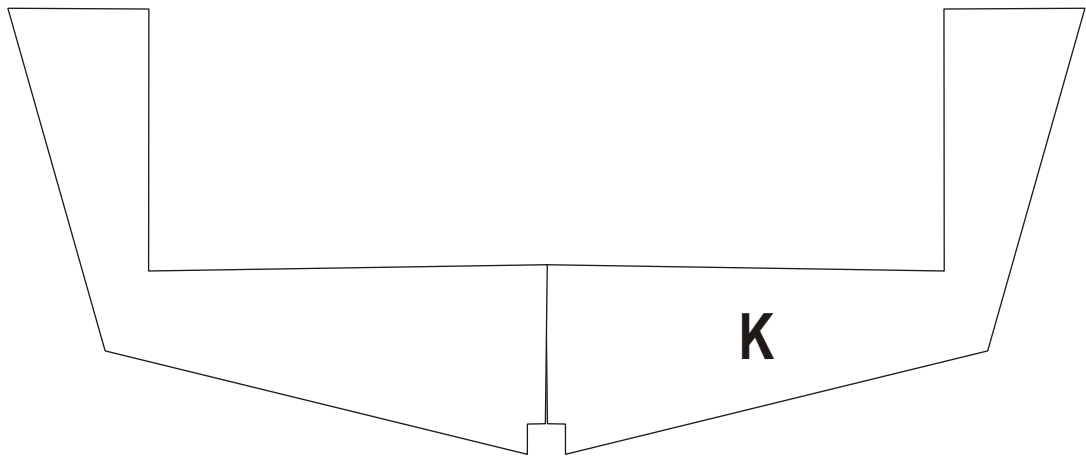
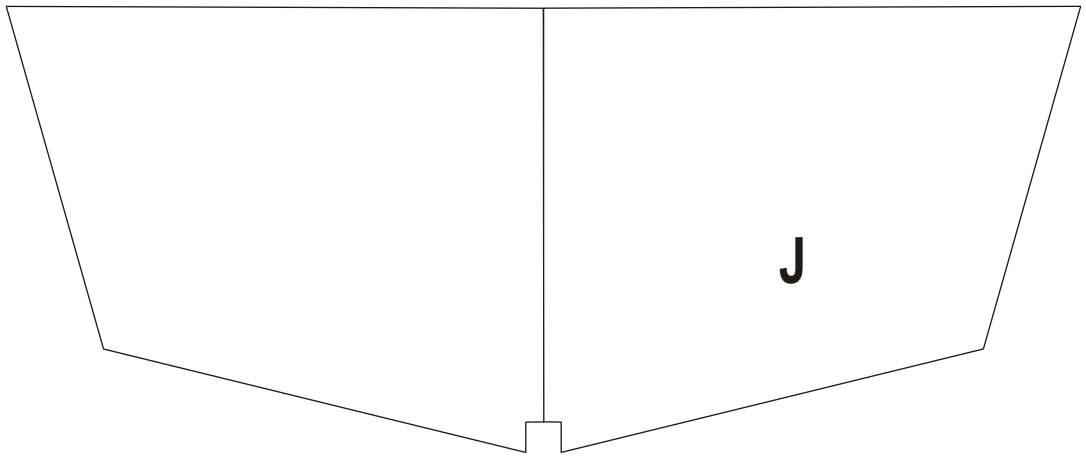
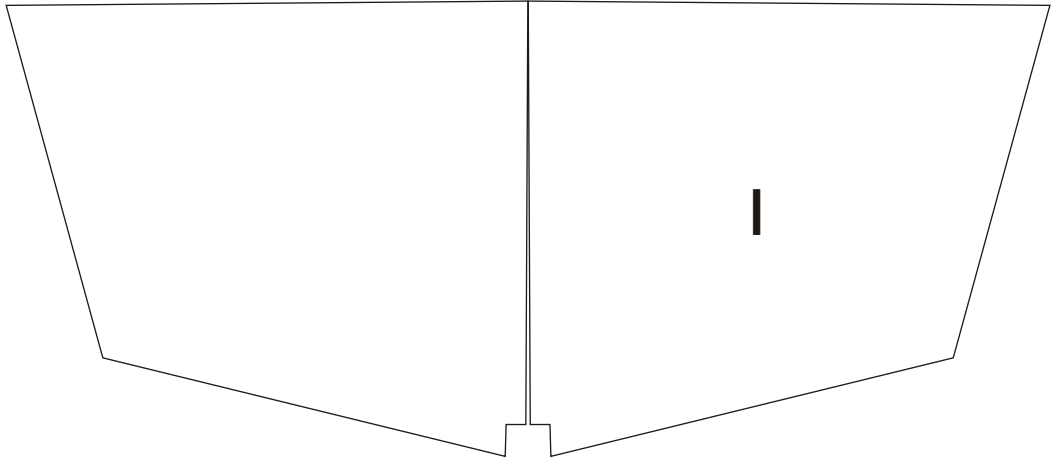
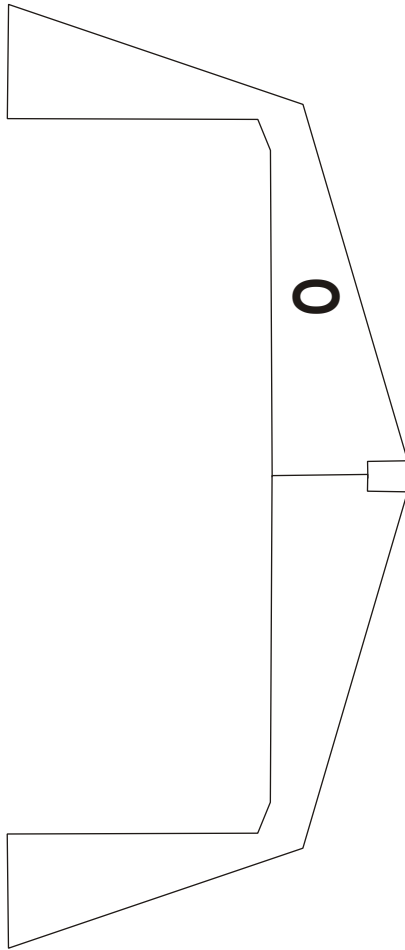
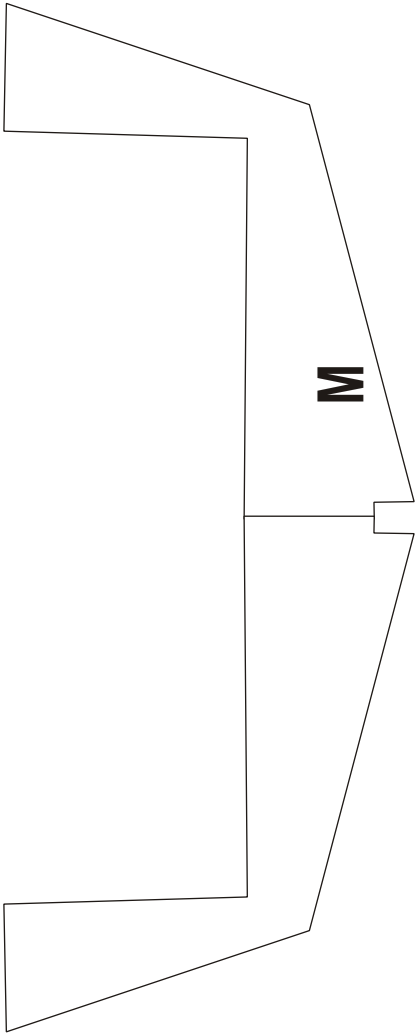
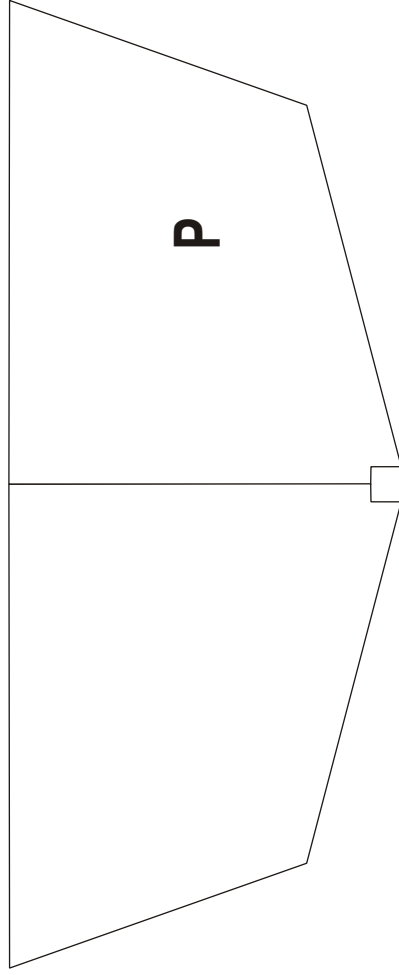
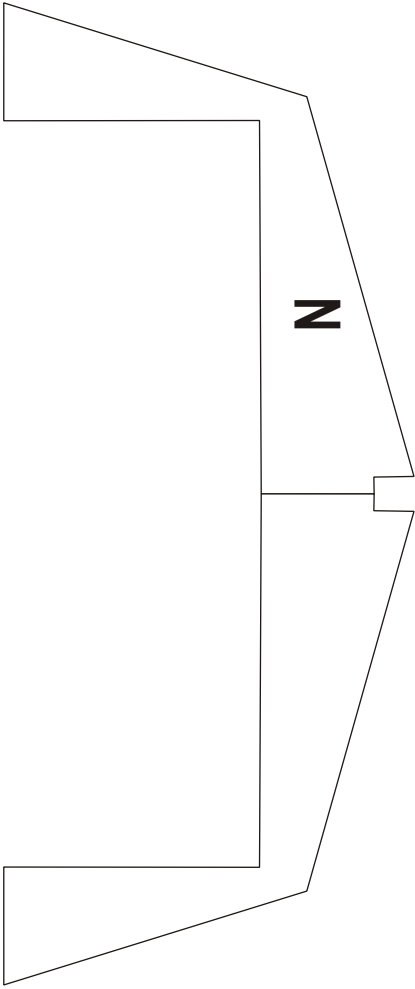


# IZABELLE 2 ESC: 1/20

## Bloco 2

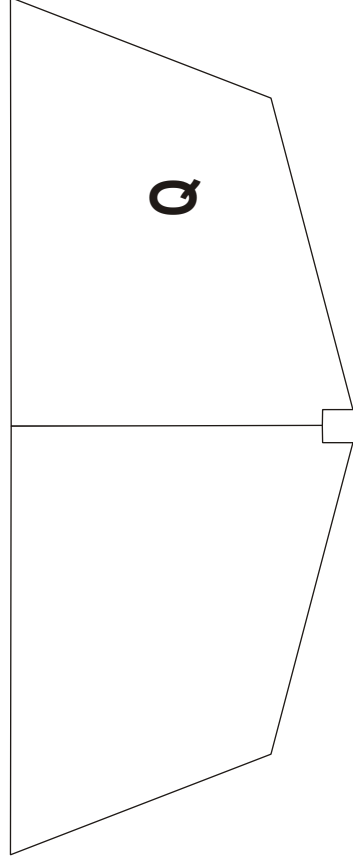




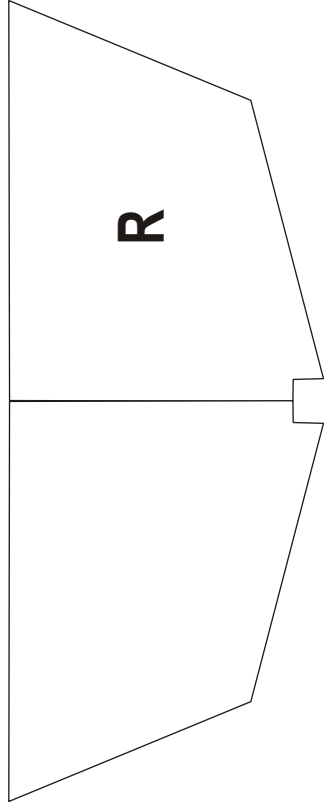


**IZABELLE 2 ESC: 1/20**

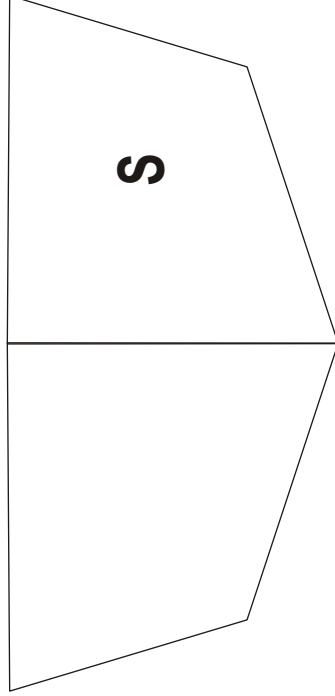
**Bloco 5**



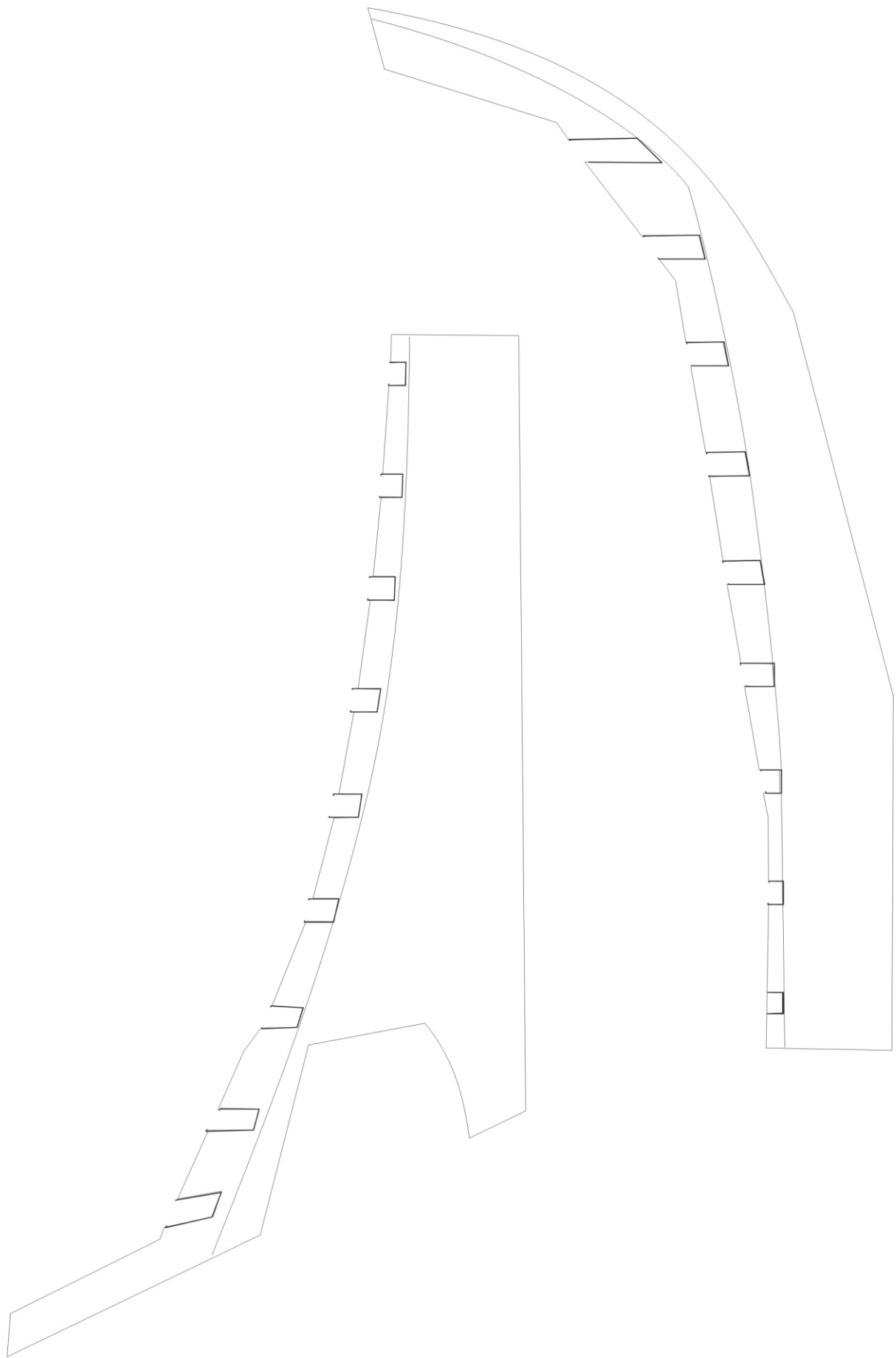
**Q**

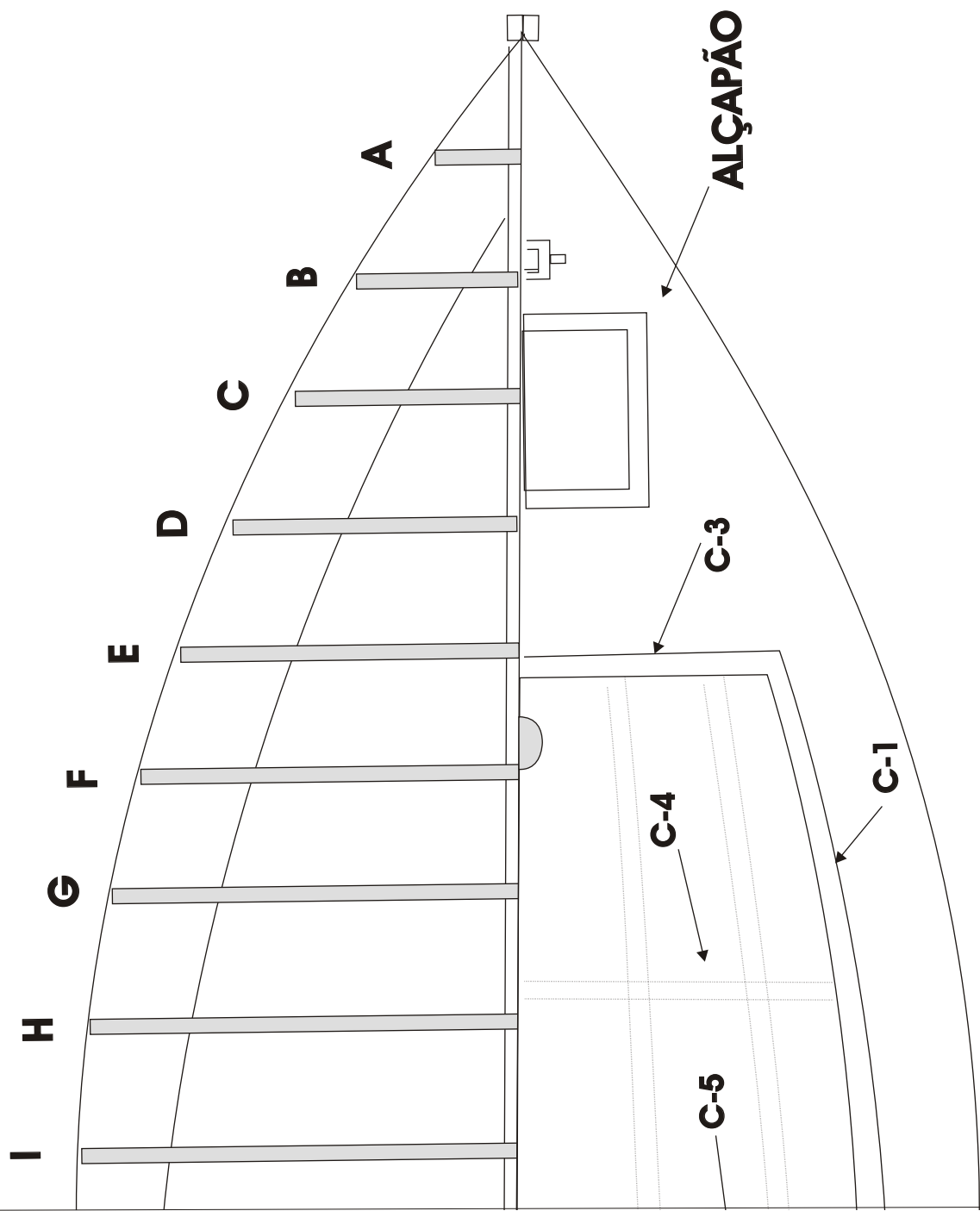


**R**



**S**





**J**

**K**

**L**

**M**

**N**

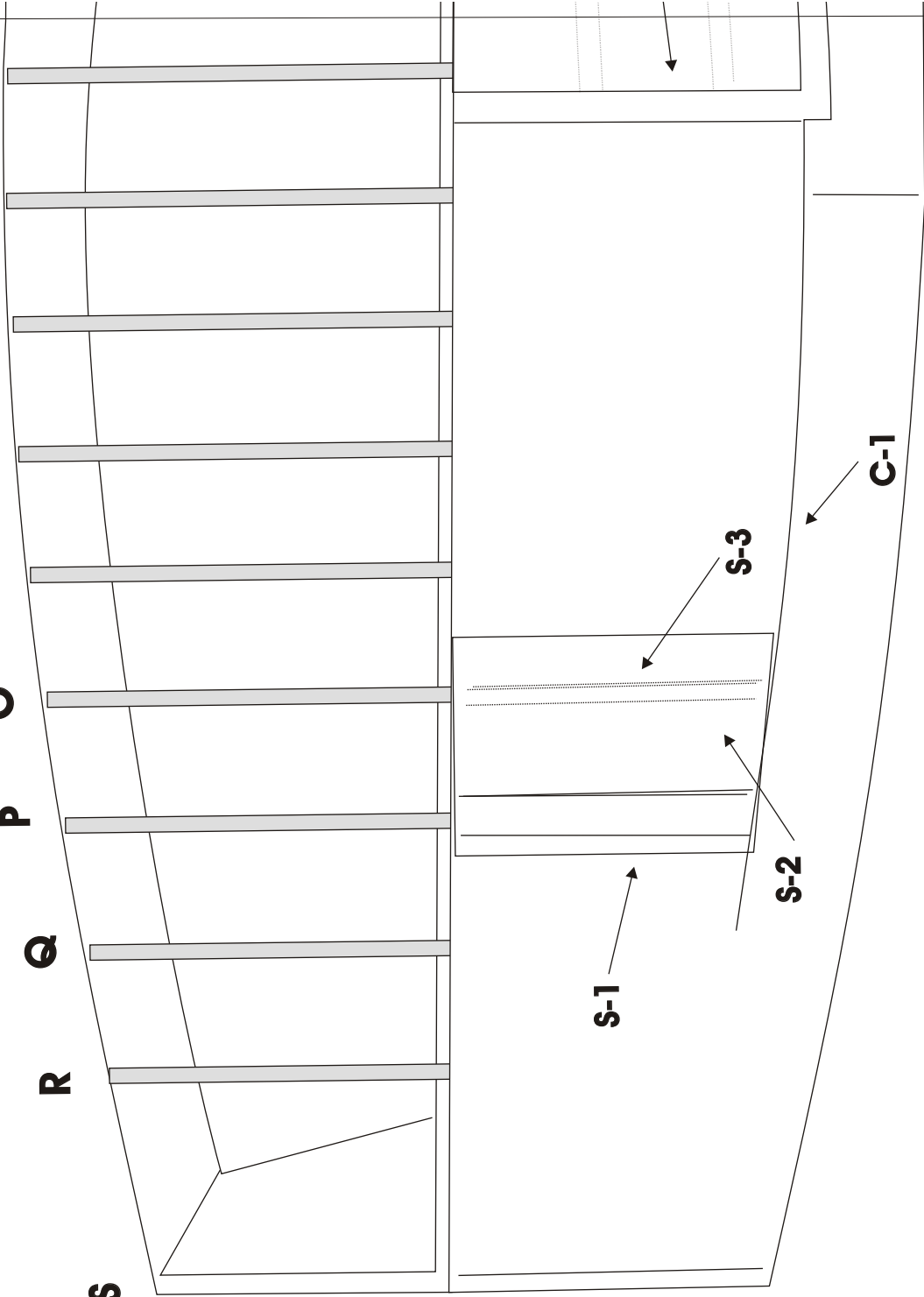
**O**

**P**

**Q**

**R**

**S**



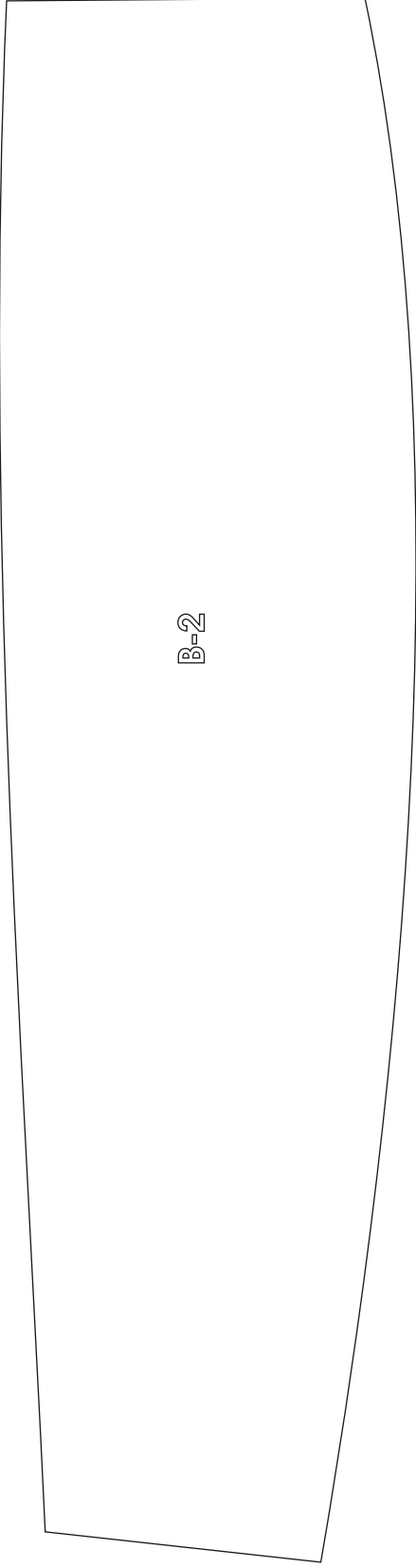
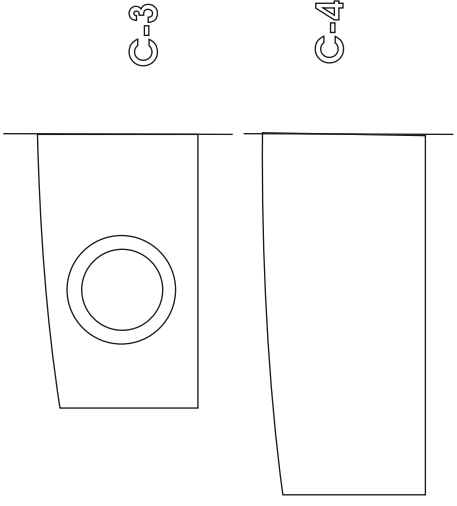
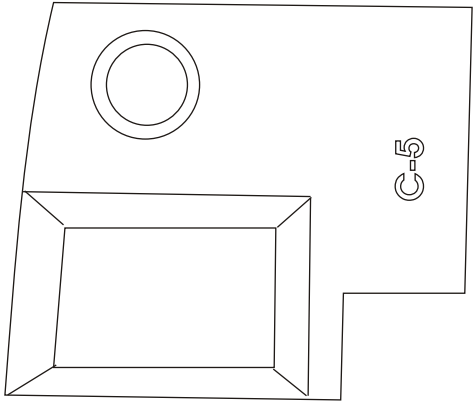
**S-1**

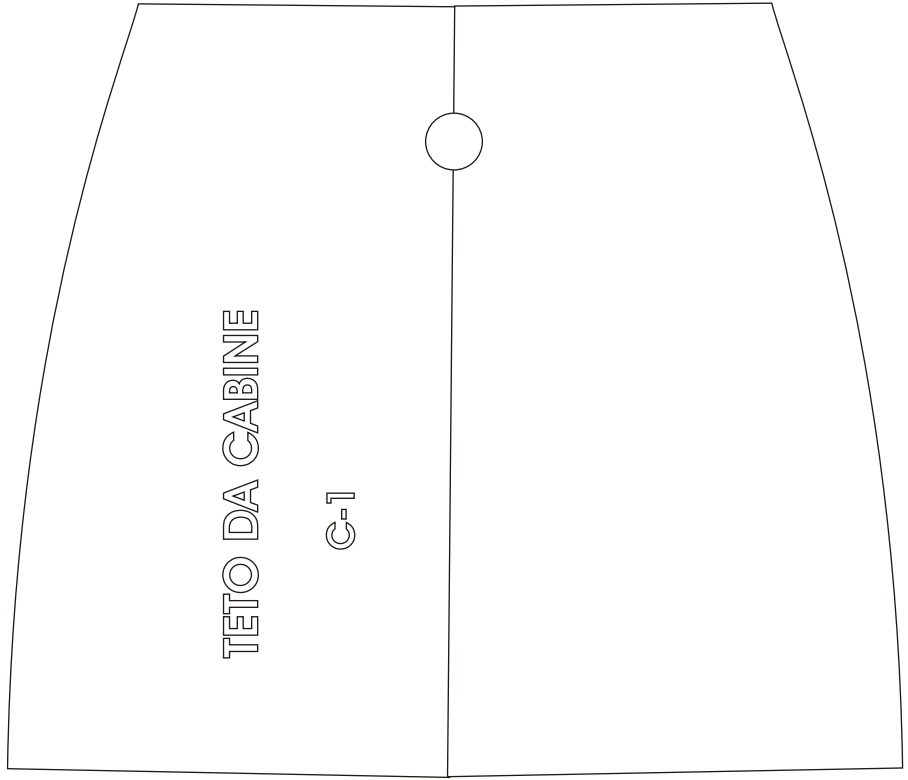
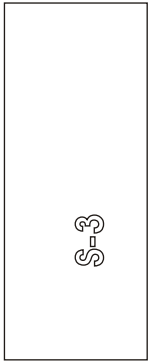
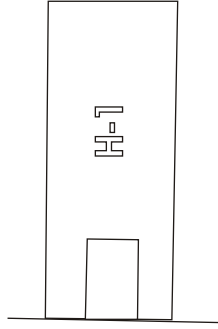
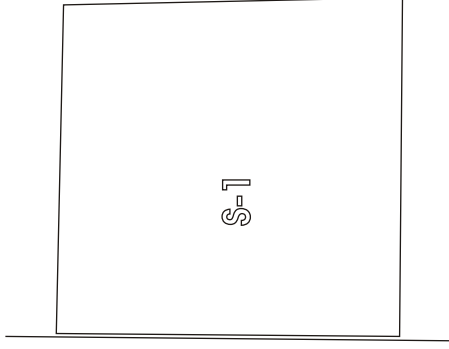
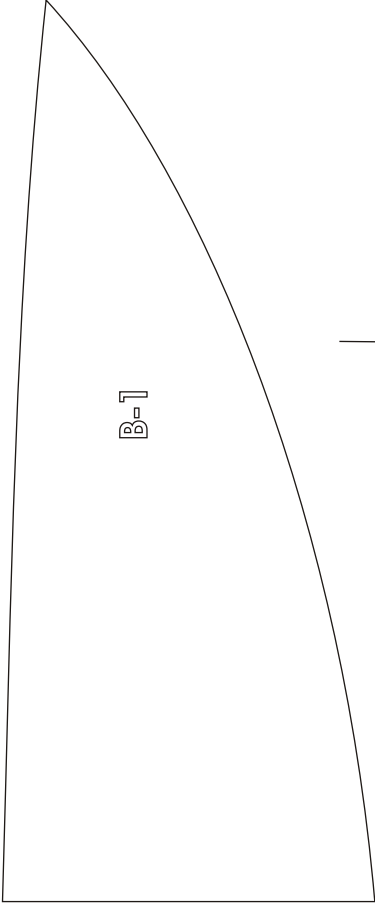
**S-2**

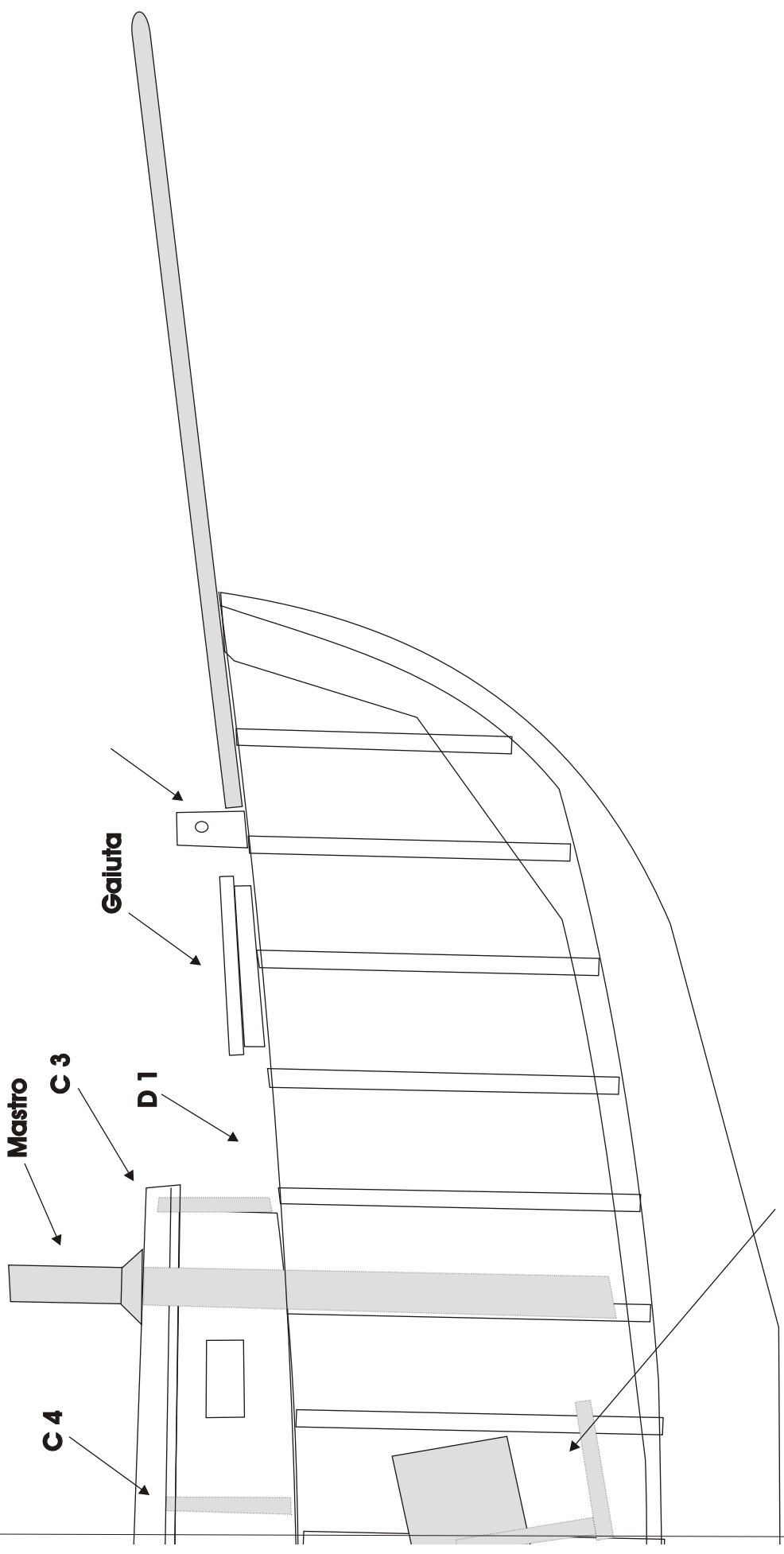
**S-3**

**C-1**









Mastro

C3

D1

Galuta

C4

Motor eléctrico (opcional)

**CANA DO LEME**



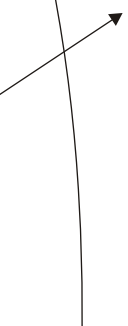
**ANTEPARA - S**



**S 1**



**S 2**



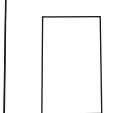
**D 2**



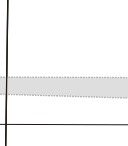
**C 2**



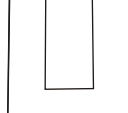
**C 5**



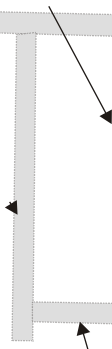
**C 1**



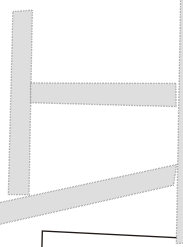
**C 4**



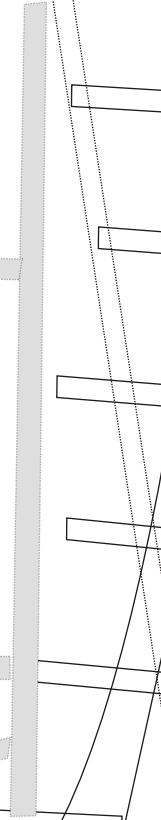
**H 2**



**S 3**



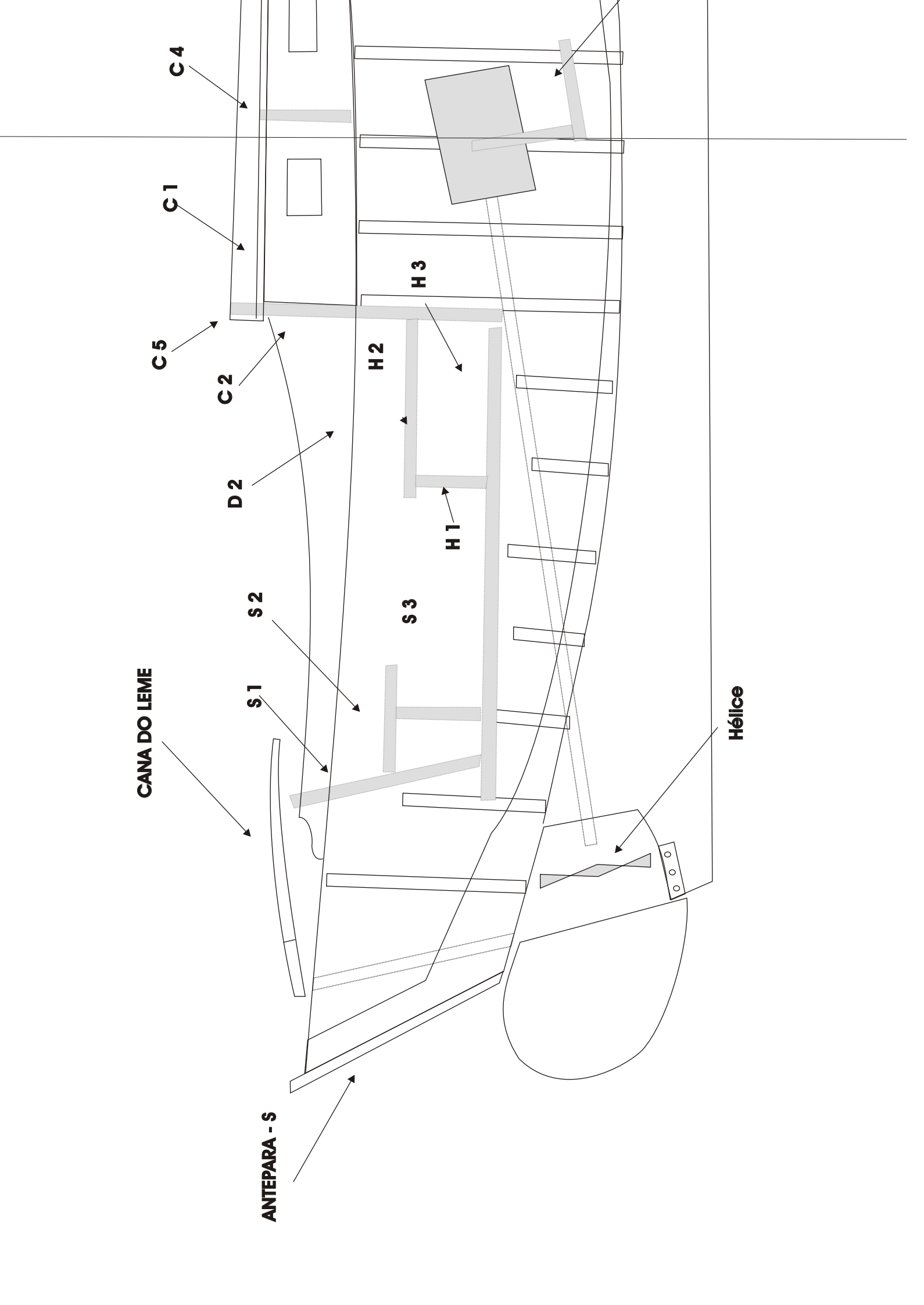
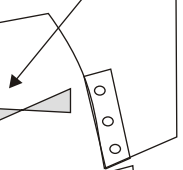
**H 1**

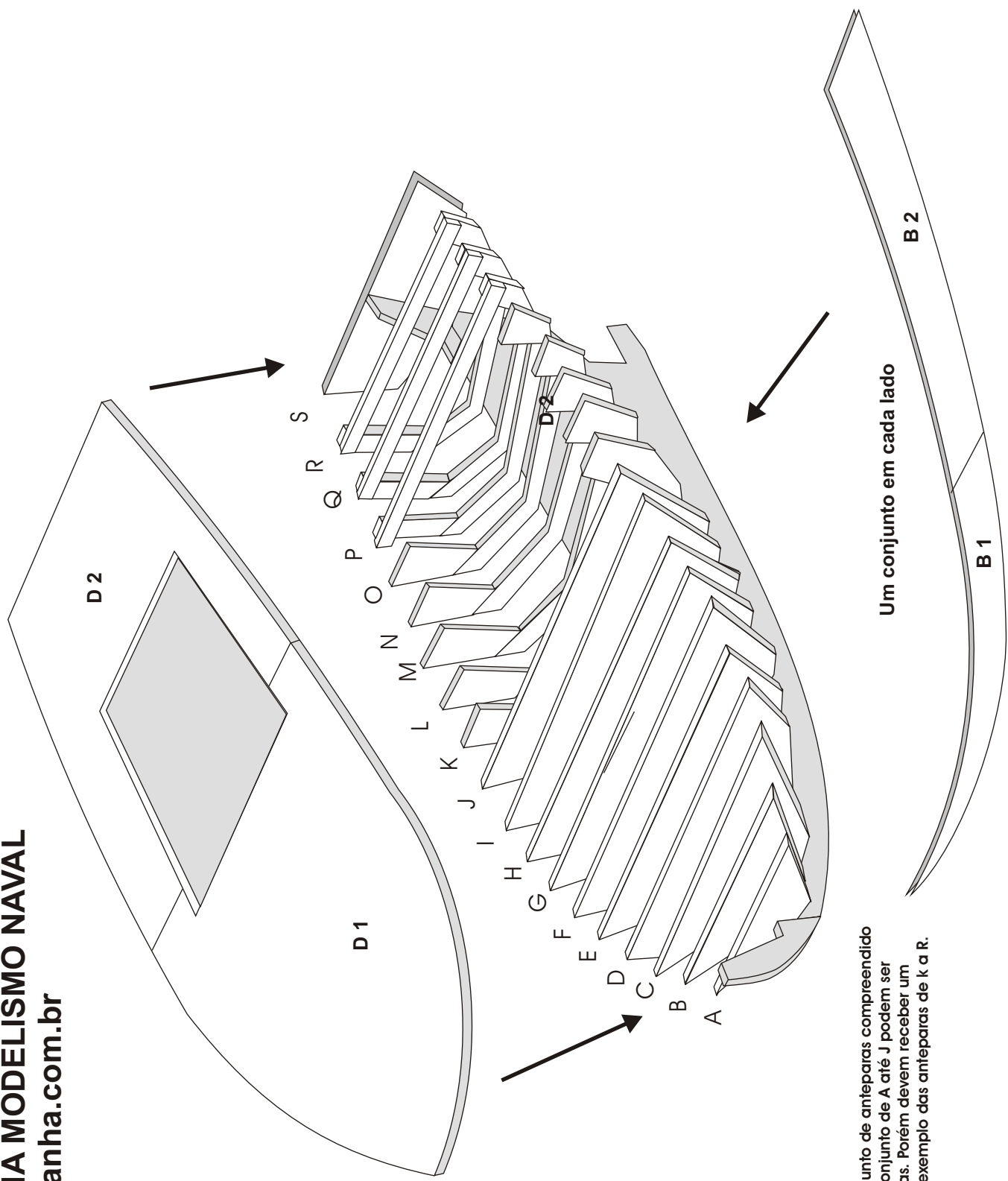


**H 3**



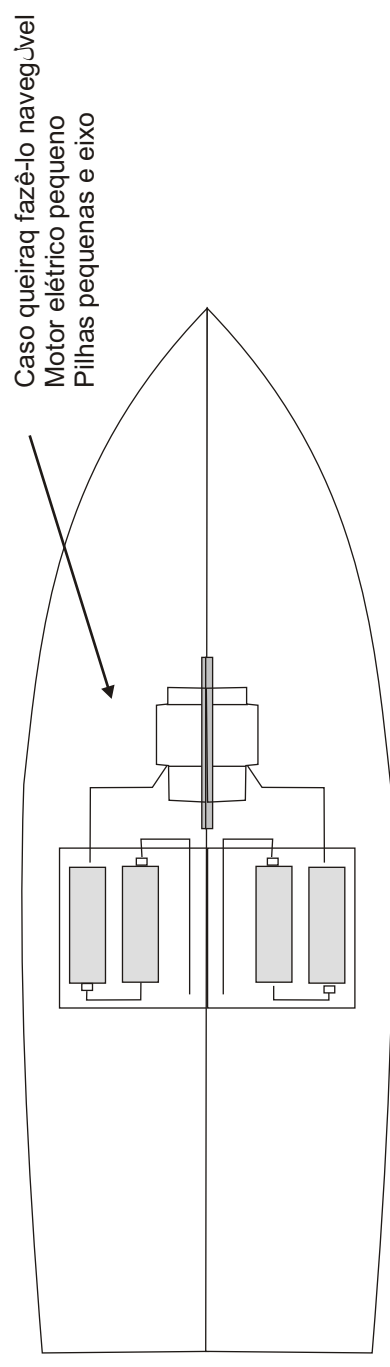
**Hélice**



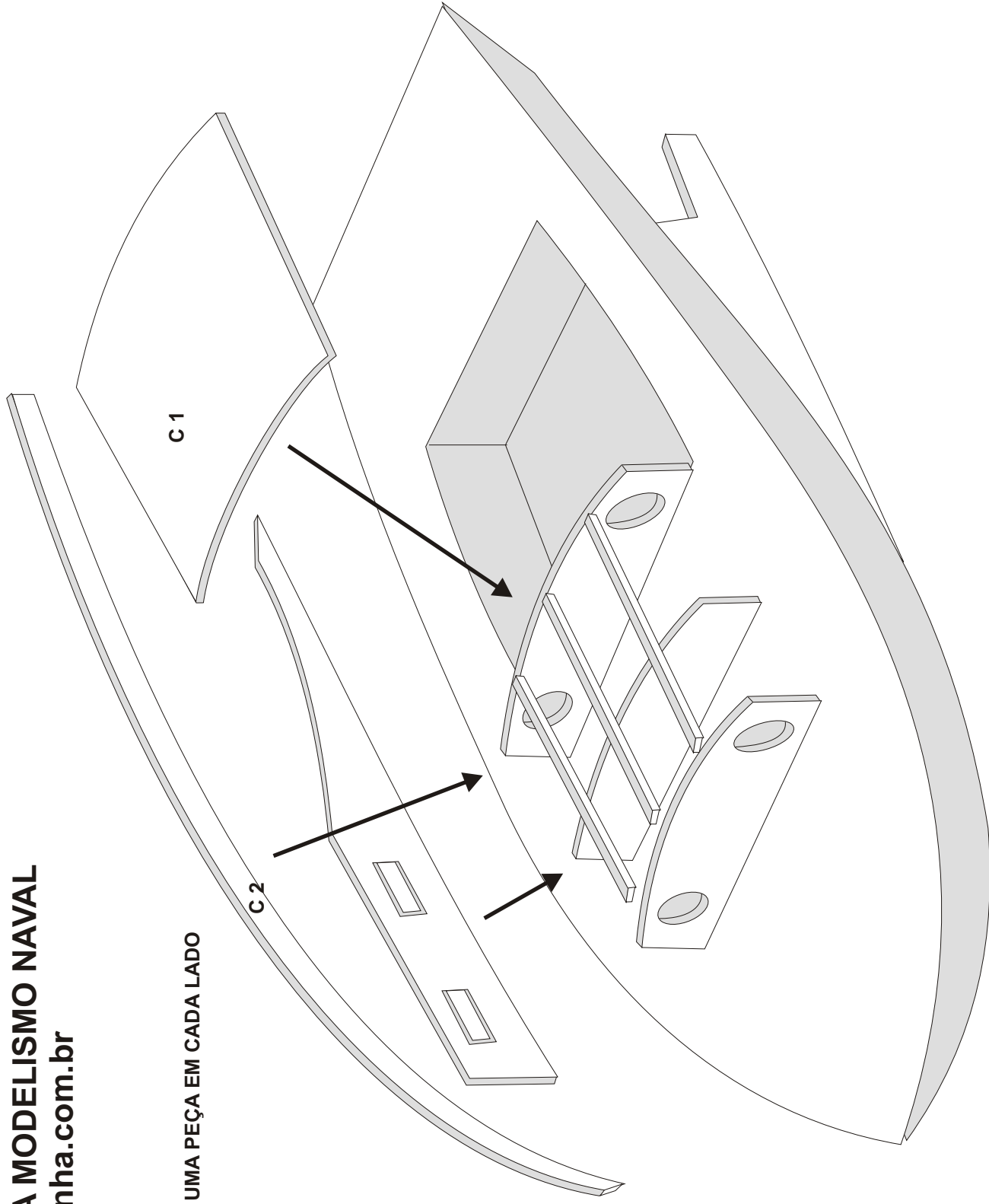


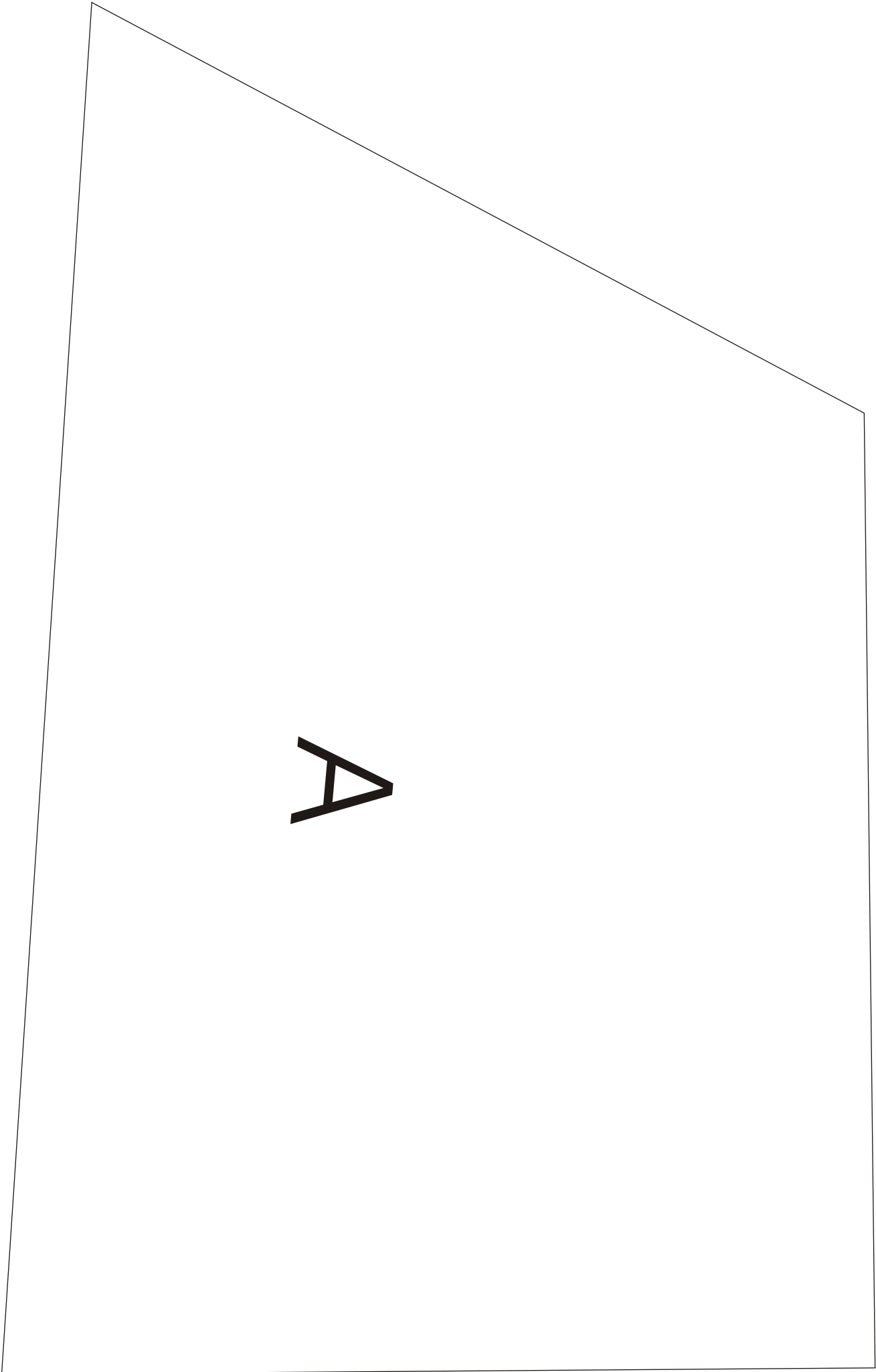
O conjunto de antepeças compreendido pelo conjunto de A até J podem ser vazadas. Porém devem receber um vau a exemplo das antepeças de k a R.

**ARTIMANHA MODELISMO NAVAL**  
**[www.artimanha.com.br](http://www.artimanha.com.br)**



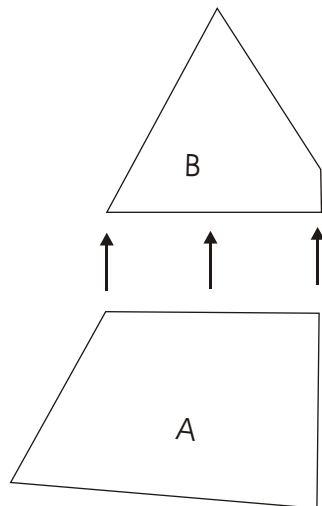
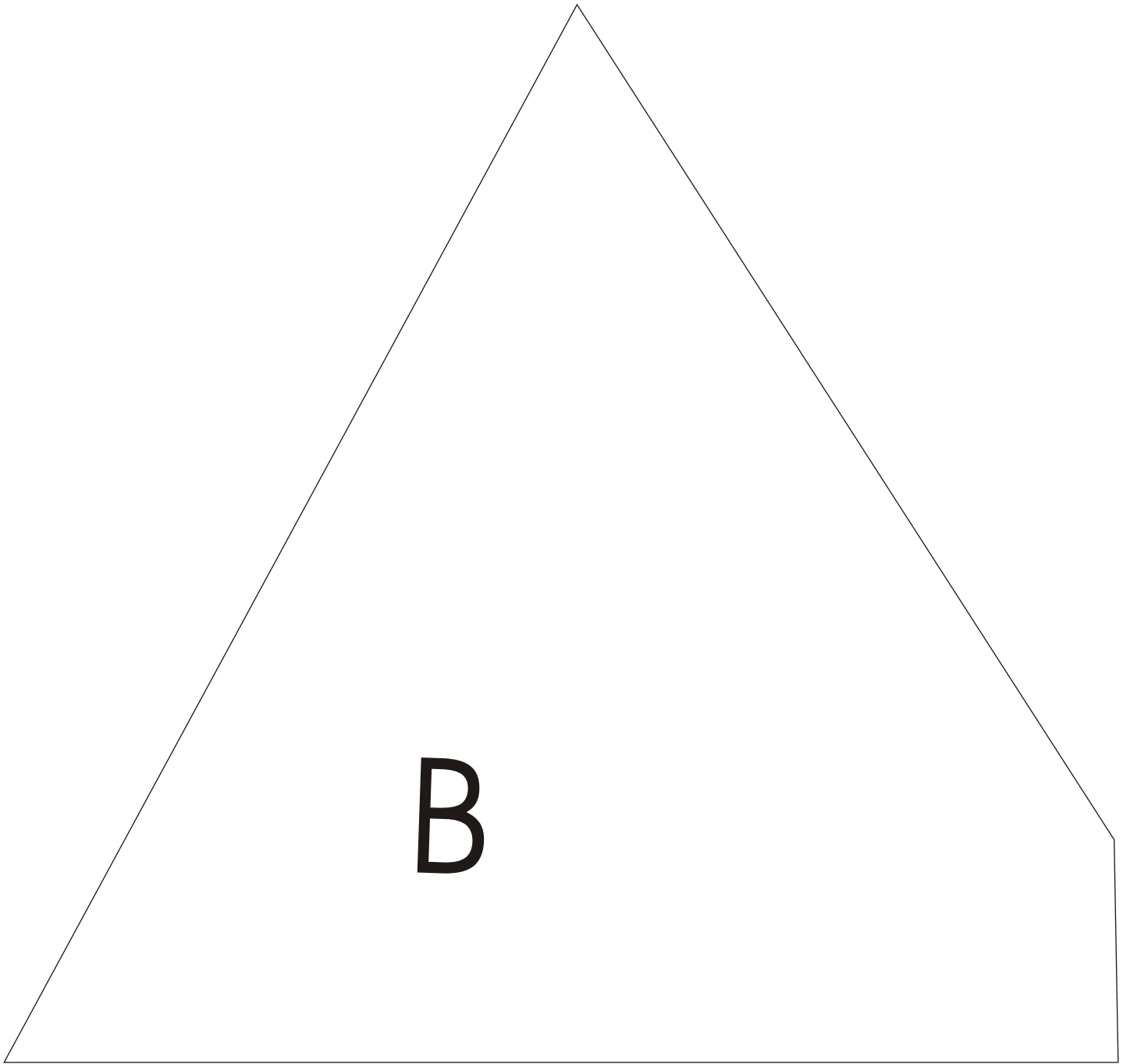
UMA PEÇA EM CADA LADO

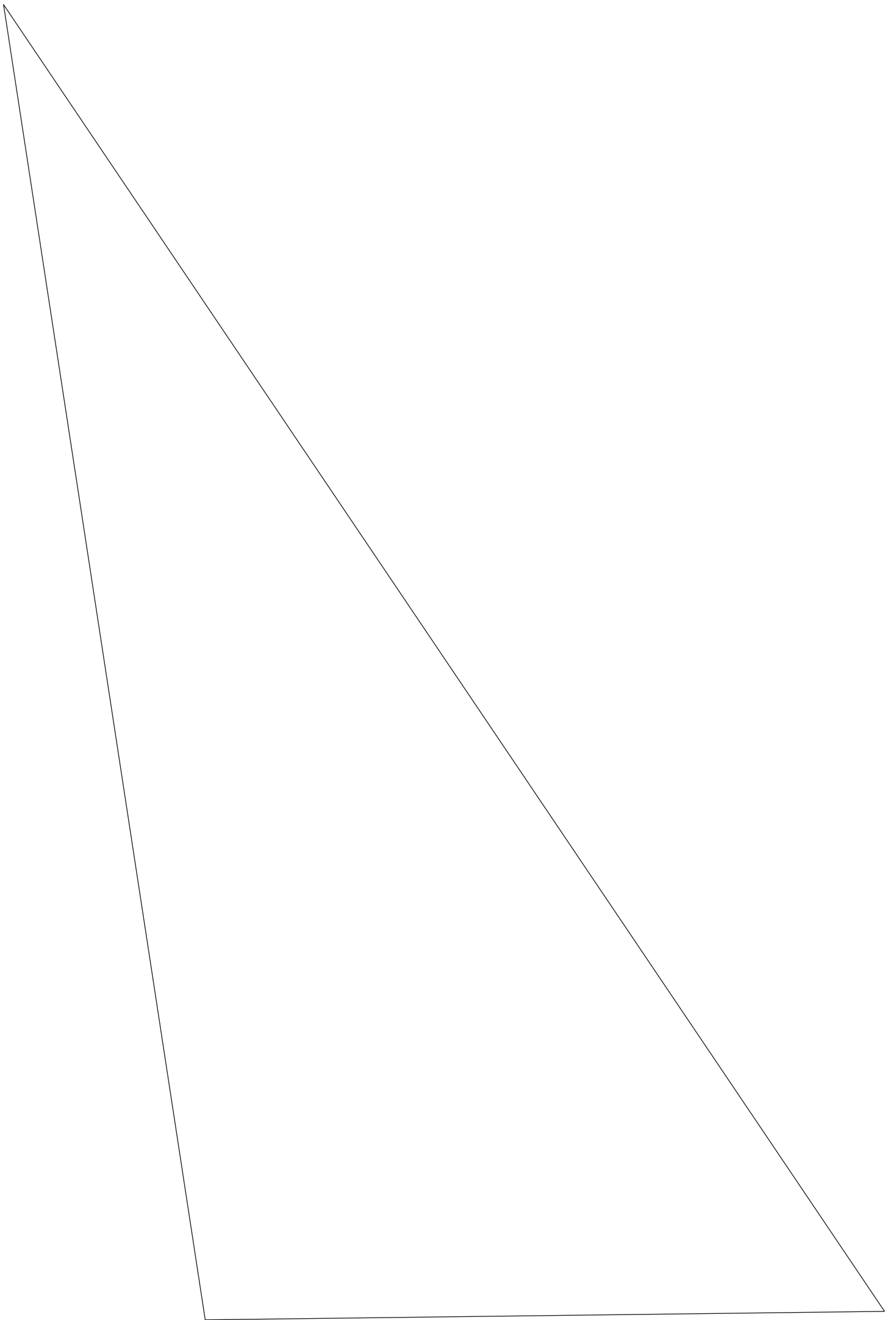




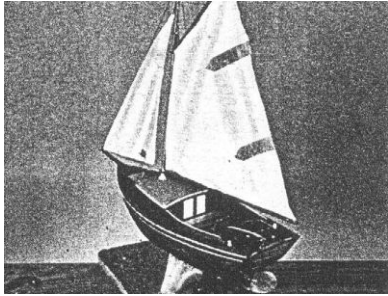
A



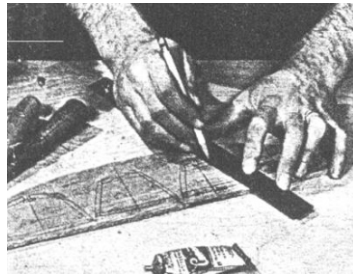




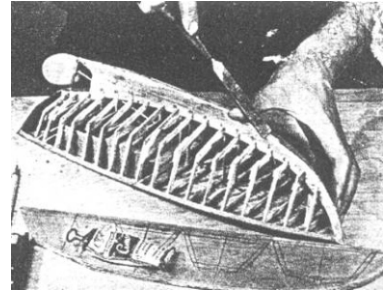
# MONTAGEM DO IZABELLE EM FOTOS



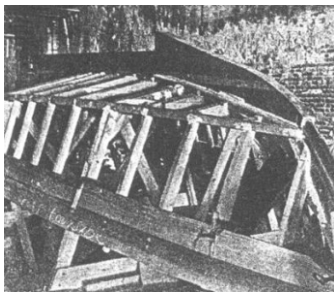
1



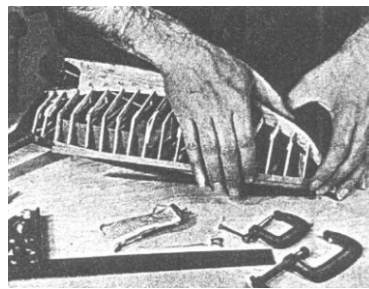
2



3



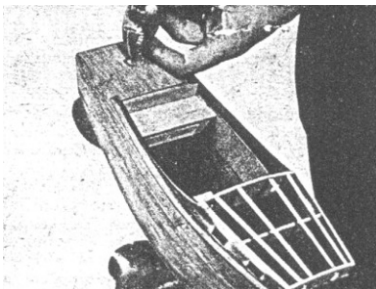
4



5



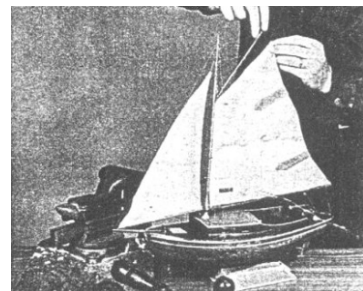
6



7



8



9