



NR KATALOG.
243

MIKROFLOTA

ISSN 1508-5449

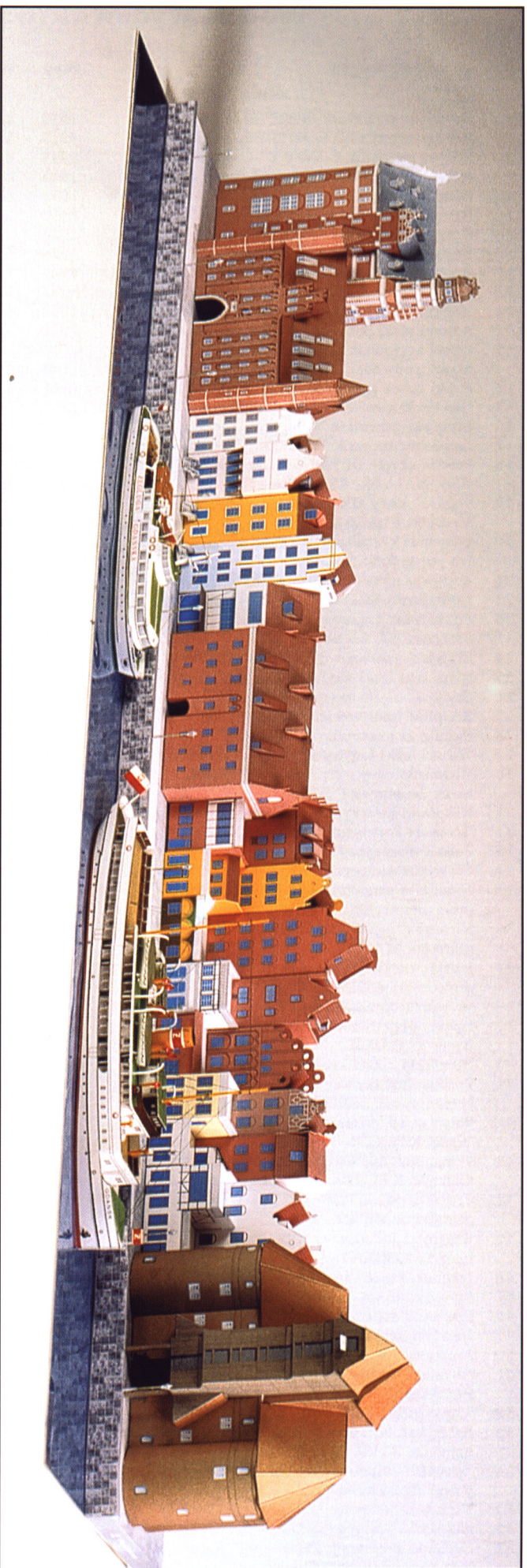
8
2001

BARKA
MOTOROWA **BM 5401**

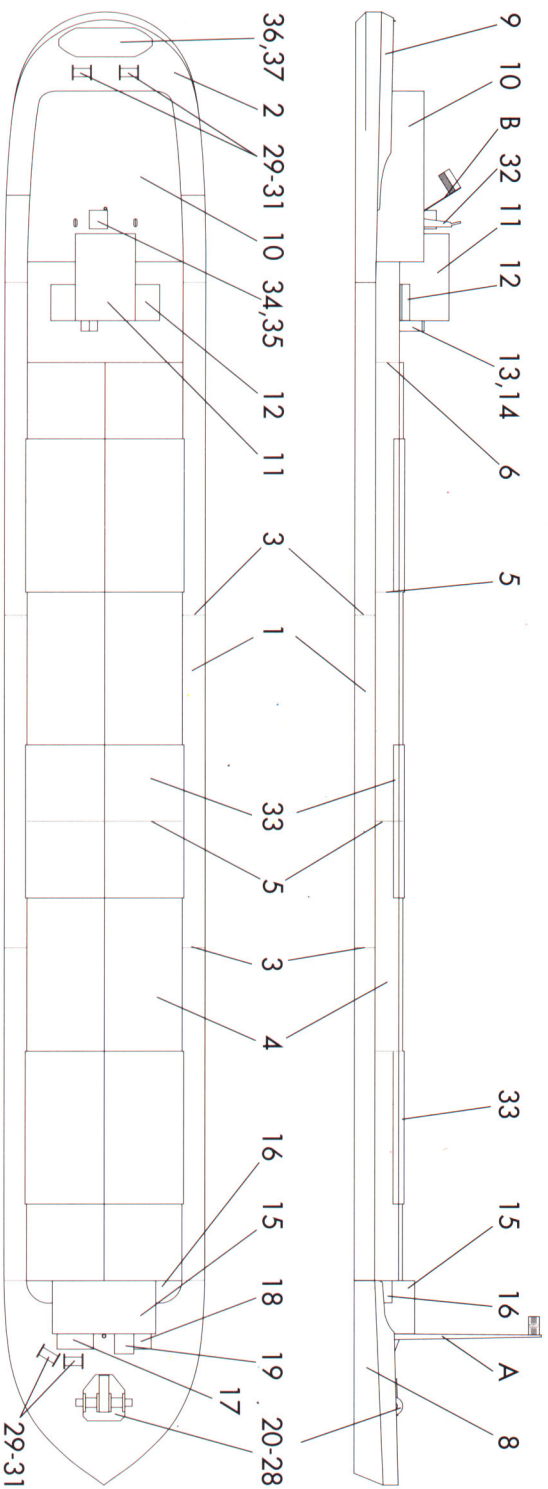
PROM **MOTŁAWA**

MODELE KARTONOWE W SKALI 1:200





JSC 211 Długie Pobrzeże + **JSC 203** Żuraw + **JSC 205** Dom Przyrodników i Brama Mariacka + statki: **JSC 241** Gdańsk + **JSC 242** Monika



Projekt modeli: **Bartosz Czolczyński**

Fotografia na okładce: **Waldemar Danielewicz**

©Copyright 2001 by **Wydawnictwo JSC**

Wydawnictwo JSC prowadzi sprzedaż wysyłkową wydanych przez siebie modeli okrętów, statków samolotów, budowli i pojazdów. Zamówienia proszę nadsyłać na adres:

**Wydawnictwo JSC, skrytka 20,
80-305 Gdańsk 5 Oliwa, Poland**

www.jsc.w.pl



Barges BM 500 are one of basic ship types of polish inland waters. Designed by Bureau for Designing and Study of River Craft in Wroclaw in second half of the fifties they were modern and quite fast ships. Lots of them are still in use on rivers and canals of whole Europe.

Barge BM500 is meant for bulk and break-bulk cargo. It has 2 or 3 holds of total cargo capacity 560 m³. Steel hull is whole

TECHNICAL DATA

length overall	57,00 m
beam overall	7,59 m
draught	1,70 m
hold capacity	560 m ³
displacement	455 t
propulsion	2 x Puck B120W 120 KM, 2 shafts, 4 rudders
crew	6 persons

welded with transversal arrangement of bonds. Six person crew has 2 kitchens, bathroom with bath, WC and heated quarter.

Barge BM-5401 was built in River Shipyard in Plock in 1966. Now it is used by Gdańsk Navigation (PUM Żegluga Gdańska Ltd.).

FERRY

MOTŁAWA

This ferry was built by River Shipyard in Tczew in 1987 to order of Central Maritime Museum in Gdańsk. The Museum took possession of new areas (Granaries: Miedź, Panna, Oliwa and part of wharf with ships: Soldek and Kaszubski Brzeg) and so its seat was divided

TECHNICAL DATA

length	12,11 m
beam	4,71 m
draught	1,60 m
propulsion	Puck SW 266/M5
crew	2 persons
passengers	50 persons

by river Motława. The ship ferries visitors of Museum to the other side of river and back. This is a very comfortable solution, because the land way between old part of Museum's seat (Crane and neighbouring buildings) and the new part takes more than one kilometre.

ASSEMBLING INSTRUCTIONS

To assemble the model you will need: scissors, pincers, sharp knife, steel ruler, paints and good paper glue.

Numbers of parts are marked black, parts to be glued in marked position - red and grey numbers in elliptical frame mark parts which should be glued in marked position but from below. Arrows show direction to bow.

Cut sheet with model into two pieces of cardboard. Press all lines where the parts should be bent by means of blunt edge of knife led at the ruler. Now cut out the parts. To approve the model's appearance paint edges of the parts.

Inland barge BM-5401

1-9 Hull. Bend part 1 after cutting the tab in stern part. Glue part 2 by means of these cut tab. Glue stiffenings 3 inside hull. Bend holds 4 and glue stiffenings 5 inside. Glue stiffening 6 inside part 4 where the cover of hold ends on stern. Bend tabs of deck 7 downwards and glue this deck between walls of part 4 and stiffening 6. Cut out sides 8, bend and round them and glue in bow part of hull. Glue sides 9 in stern part of model.

10-14 Deckhouse. Assemble part 10 and glue it on deck in marked position. Assemble part 11 and glue it on parts 7, 10. Glue skylights 12 to parts 7 and 11. Assemble locker 13, glue it to parts 7 and 11. Glue roof 14 on part 13.

15-19 Fore quarters. Assemble kitchen 14 and place it on fore deck gluing it to the hold. Assemble lockers 16 and glue them in marked position. Glue skylights on deck 1 where marked.

20-28 Windlass. Assemble according to Fig. 1 and glue on fore deck.

29-31 Reels. Assemble according to Fig. 2 and glue on fore deck (2 brown reels) and on after deck (2 black reels) as shown in assembly drawing.

32 Exhaust pipes. Cut the parts out, fold in half, bend tabs outwards, assemble and glue on part 10.

33 Hold covers. Bend the parts and glue on part 4.

34,35 Locker. Assemble part 34, glue roof 35 on it and place ready locker on part 10.

36,37 Boat. Cut out part 36, bend it and glue. Glue deck 37 inside hull 36. Fasten ready boat on after deck.

Ferry MOTŁAWA

1,2 Hull. Cut out part 1 and bend it. Glue stiffenings 2 inside hull.

3 Wheelhouse. Assemble the part and glue it on deck.

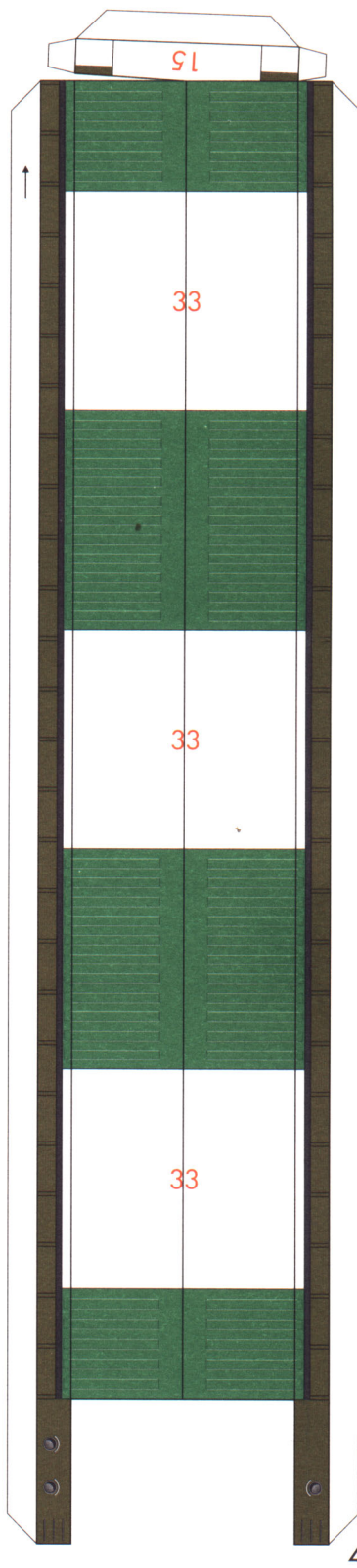
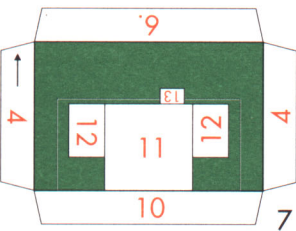
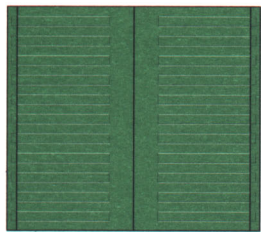
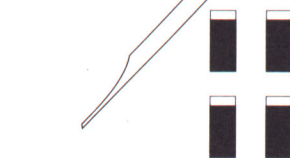
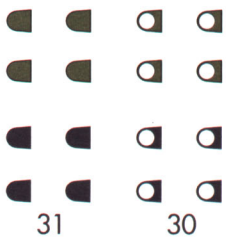
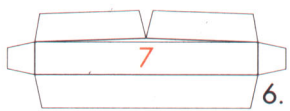
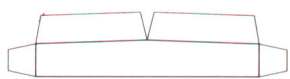
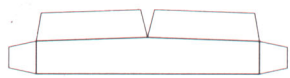
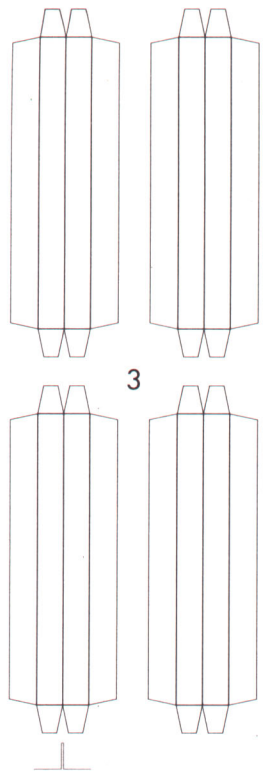
4 Bulwarks. Bend the parts according to Fig. 3 and outline on deck and glue on part 1.

5-8 Lockers for life-jackets. Assemble parts 5, 7 and glue them on deck. Glue roofs 6 and 8 on the lockers.

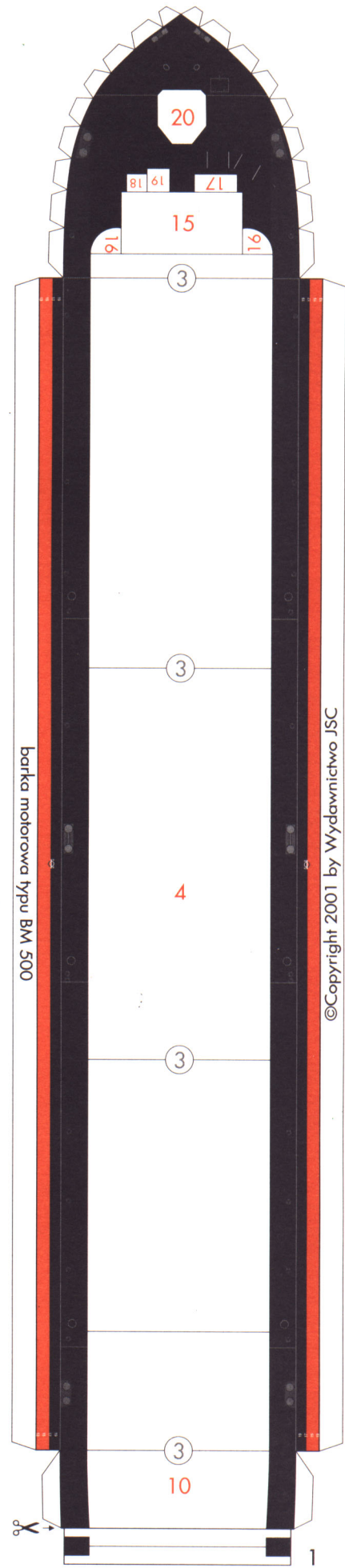
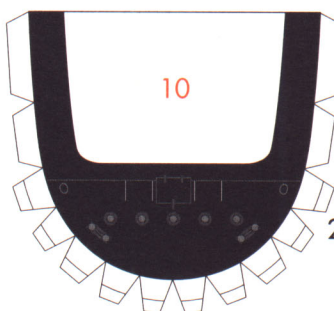
9-13 Wheelhouse. Glue together deck 9 and 10, place the parts on wheelhouse 3. Place part 11 on this deck and cover with roof made out of parts 12 and 13.

14 Life rafts. Assemble them out of four layers and glue in piles (two rafts) on the deck.

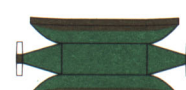
15,16 Gangways. Cut out parts 15 and bend them with printed surface directed inwards. Glue parts 16 from outside and fasten ready gangways on deck.



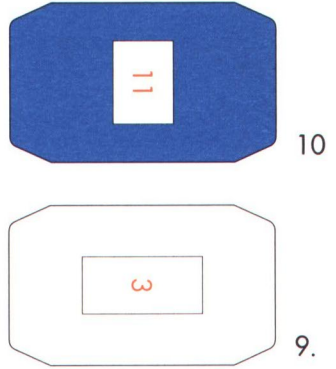
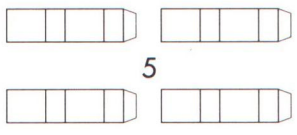
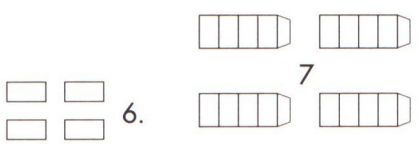
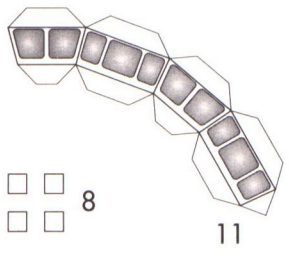
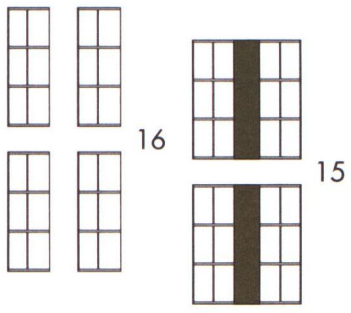
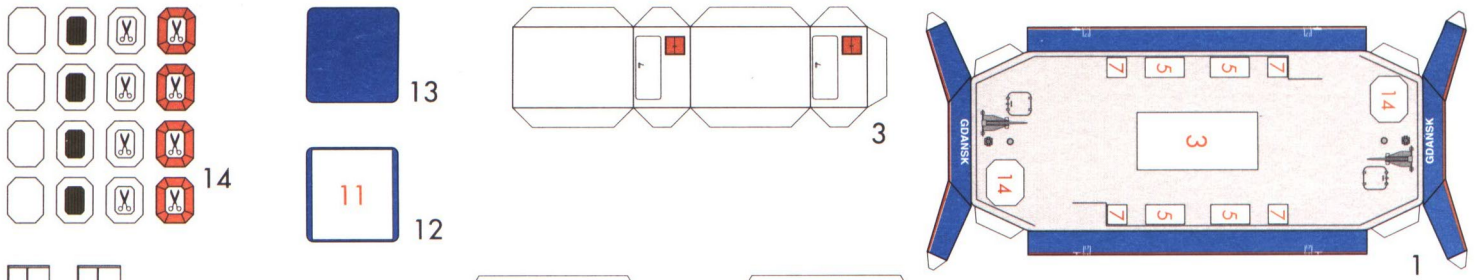
JSC Barka BM-5401 arkusz 1



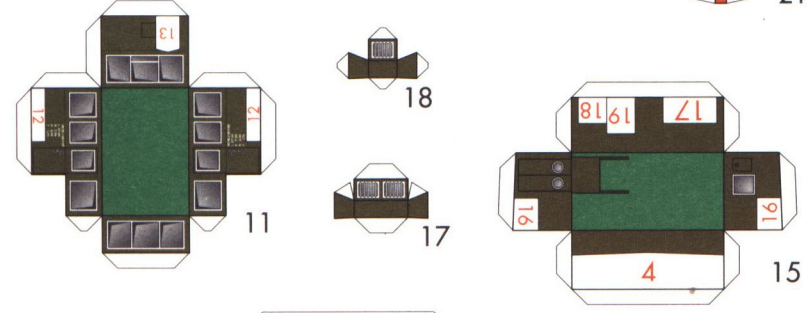
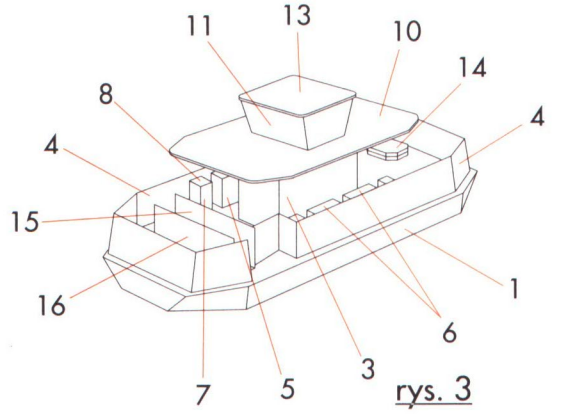
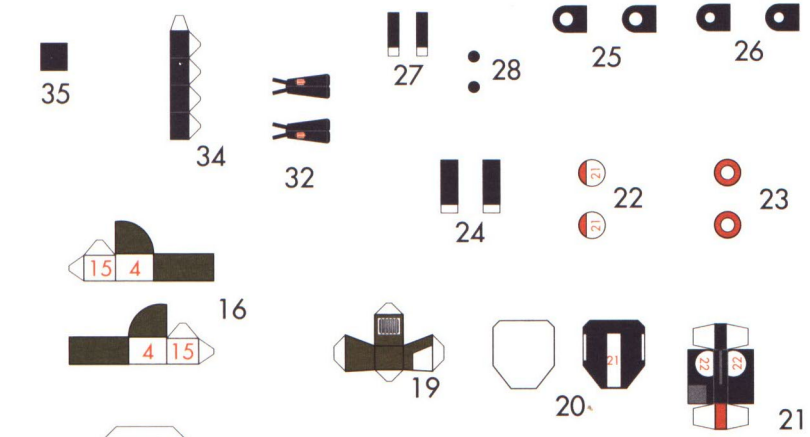
barka motorowa typu BM 500



©Copyright 2001 by Wydawnictwo JSC



JSC Prom MOTŁAWA
arkusz 1



JSC Barka BM-5401
arkusz 2

