

**JSC**

NR. KATALOG.

54

**MIKROFLOTA**

ZBIORNIKOWIEC

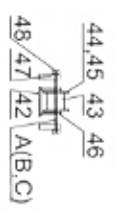
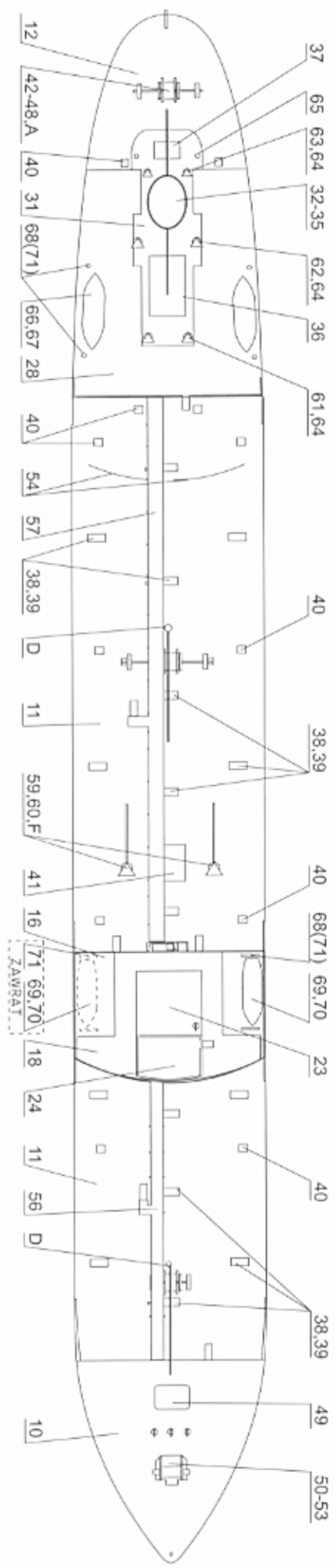
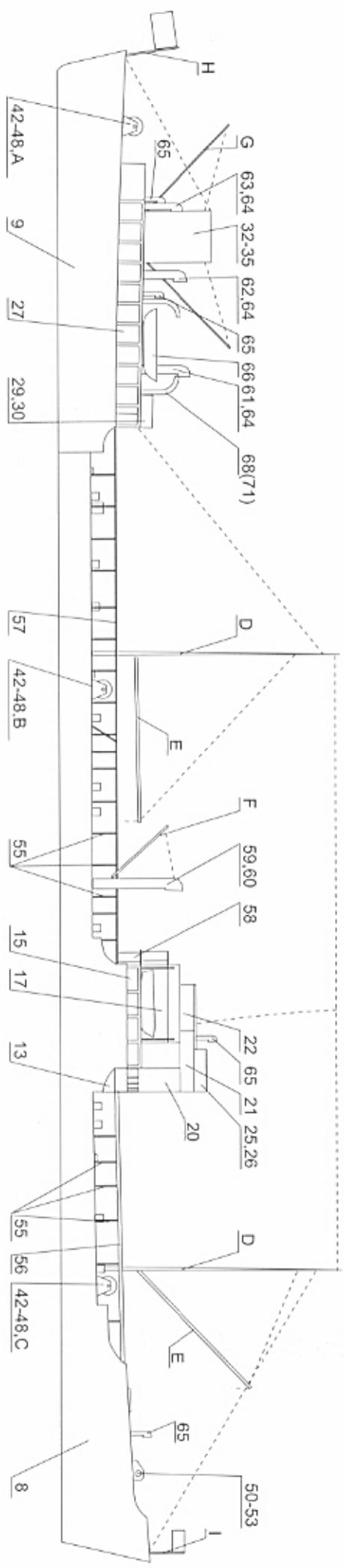
**ZELOS LUB ZAWRAT**

ISSN 1508-5449

$\frac{8}{2000}$

MODEL KARTONOWY W SKALI 1:400





- A - 1 szt.      B - 1 szt.      C - 1 szt.      D - 2 szt.
- E - 2 szt.      F - 2 szt.      G - 2 szt.      H - 1 szt.      I - 1 szt.

In 1941 a typical tanker was launched by A.B. Göta-verken in Göteborg (Sweden) for Redericaktiebolaget Transoil. The ship's hull was divided into 16 tanks. The fitting out continued in slow pace, especially as ruthless war prevented operations of such large vessel in European waters. Only in October 1944 the ship entered service as *Zelos* (call sign SEWT), managed by Rolf Sorman of Göteborg.

In October 1958 the sold was sold to Poland. She was taken over in Göteborg on 3 November 1958 and entered service with Polish Ocean Lines as *Zawrat* (call sign SPNO). She carried oil from Soviet Black Sea harbours to Poland. By that time she was 8454 tons gross and 4947 net while her deadwe-

ight capacity was 12734 t.

However, the ship was not in very good shape. In December 1960 she underwent a serious refit in South Shields, when considerable part of her plating was replaced. In July 1963 roku she was withdrawn from active service and in October 1963 *Zawrat* was taken over by Gdańsk harbour company „Portservice” to be used as a floating tank.

Soon it proved that her tanks are seriously corroded and *Zawrat* was to be broken up. On 26 February 1964 her flag was lowered in Gdańsk and soon after she was broken up in Gdańsk Repair Yard.

*written by Marek Twardowski*

Technical data (1944):	
tonnage:	8437 gross, 4033 net, RT;
dimensions:	147,3 x 18,1 x 8,5, m;
propulsion:	1 Götaverken 6 cylinder diesel engine, 4200 HP = 13,0 knots., 1 shaft;
complement:	ca. 37 men

## ASSEMBLING INSTRUCTION

**Important remark!** This model may be assembled as *ZELOS* or *ZAWRAT*. Parts with numbers: 4, 8, 9, 10, 11, 12, 20, 31, 32 are doubled and should be used according to assembled model. Pay attention to parts 68-71 which are described in assembling instruction.

**1-12 Hull.** Cut out part 1, bend tabs and assemble "step" of forecastle. Glue parts 2 to 1. Assemble a box out of part 3, and inside glue three stiffenings 4 bend as letter "C". Form stern out of parts 5, 6, take care of sides rounding at stern and glue stiffening 7 inside. Glue the parts of hull together, wrap them with sides 8 (from bow) and 9 (from stern) and cut excess on midship. Glue decks 10-12 on hull.

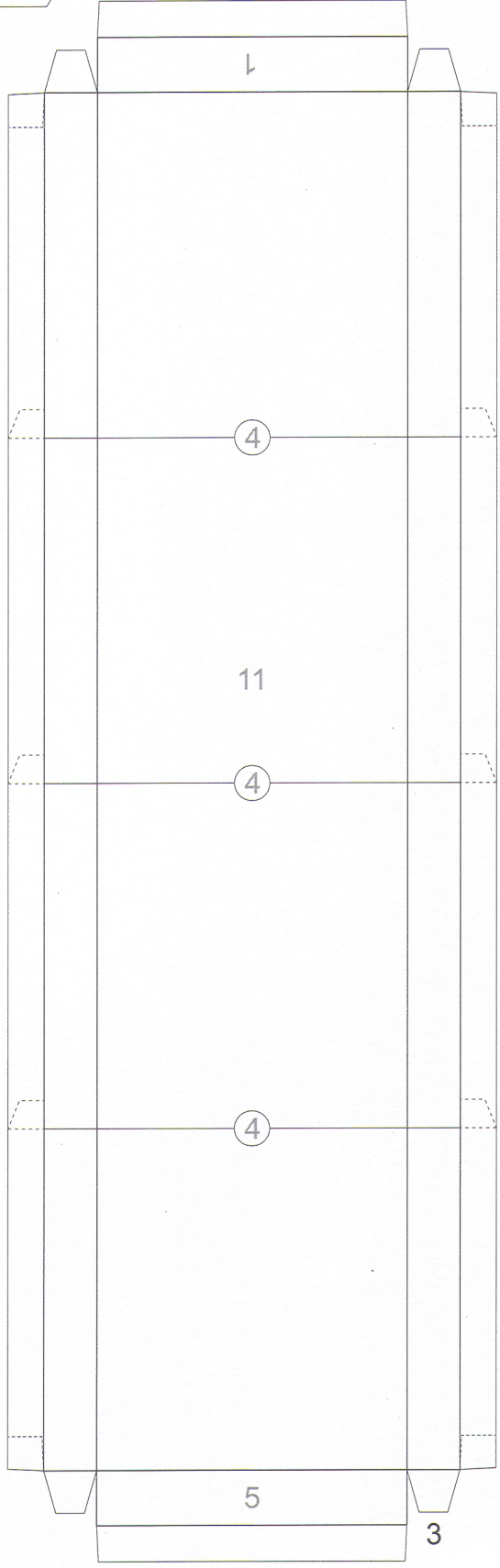
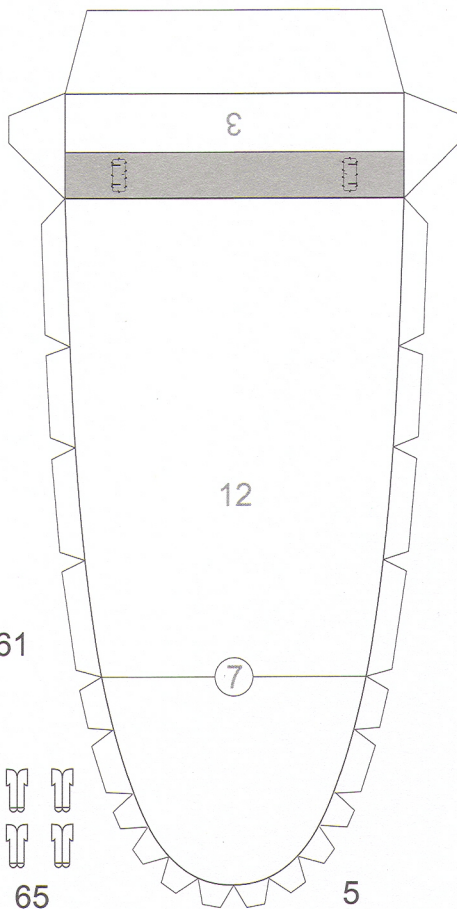
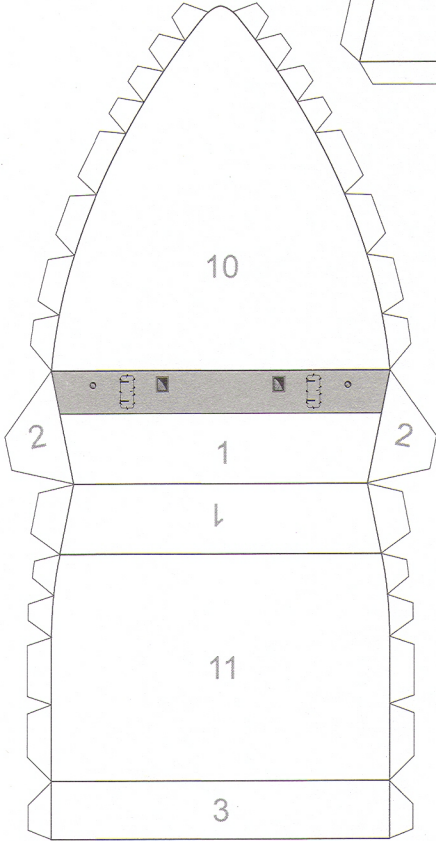
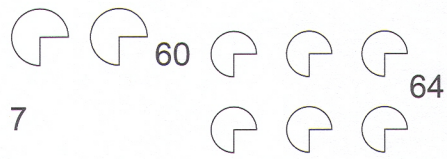
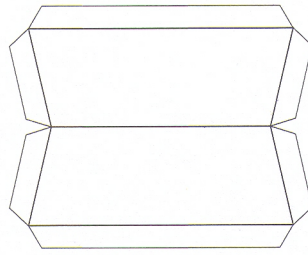
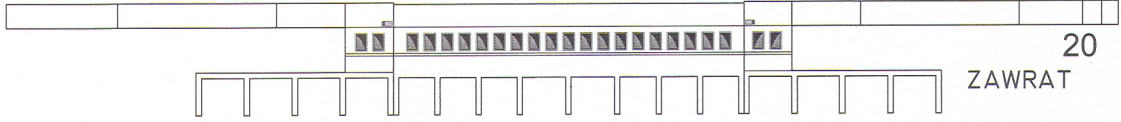
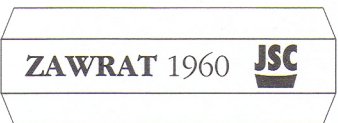
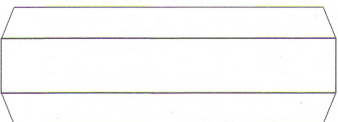
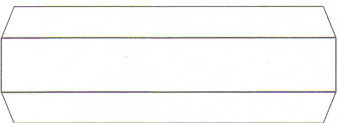
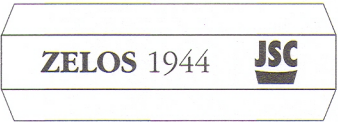
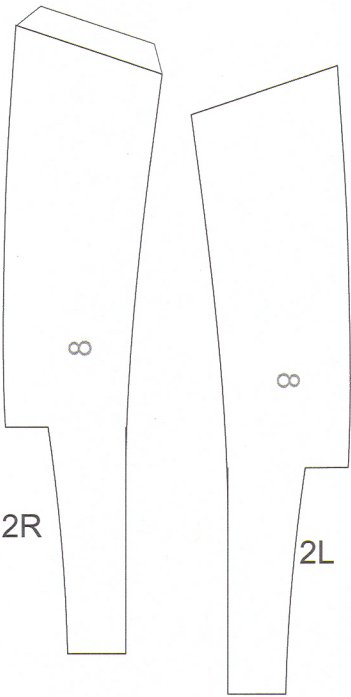
**13-26 Bridge house.** Glue assembled parts 13-18 on midship deck. Glue railing 19 to back edge of deck 16. Part 20 helps to wrap fronts and sides of decks 16, 18. Glue railings protruding from sides to edge of deck 14. Place deckhouses 21, 22 on deck 18 and fasten on them deck 23, 24 wrapped from outside with railing 24 and from inside with 26.

**27-37 Poop.** Glue deckhouse 27 and deck 28 wrapped with railing 29 and 30. Glue part 31 on deck 28. Roll strip 32 as a tube, inside from above glue strip 33. Shape the funnel by means of parts 34 (top) and 35 (bottom) and glue the whole on model. Glue engine room skylights 36 and 37.

**38-65 Additional equipment.** Glue parts 39 in pairs and place them on strips 38 forming hatch boxes which should be glued on main deck. Glue there also hatches 40 and skylight 41. Assemble cargo winches out of parts 42-48 and glue them on decks. Place hatch 49 and win-

class made out of parts 50-53 on fore deck. Glue strips 54 in pairs, bend a little and glue on main deck. Cut out "gates" 55 after gluing and mount them on main deck. They form supports of catwalks 56 and 57. Glue gangway 58 on platform 57 at the back of bridge house. Assemble strips 59 as long tubes, cut their tops at the slant and glue there cones 60. Glue ready ventilators-masts on main deck. Add booms F made out of wire. Assemble ventilators out of parts 61-64 (similar as out of parts 59, 60) and glue them around the funnel. Fold parts 65 in half, assemble and glue on decks 10, 23 and 28.

**66-71 Lifeboats.** Assemble boats out of parts 66, 67 and glue them on deck 28. Glue davits 68. Assemble motorboats out of parts 69, 70 - one for *ZELOS* (at left side of deck 16) or two for *ZAWRAT*. If you assemble *ZAWRAT*, davits 71 should be glued instead of 68. Davits 71 should be also glued at both sides of deck 16 together with motorboats.



6L

6R

65

5

2R

2L

ZELOS 1944

JSC

ZAWRAT 1960

JSC

ZAWRAT

20

59

60

64

7

10

2

1

2

1

11

3

4

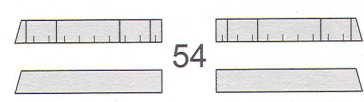
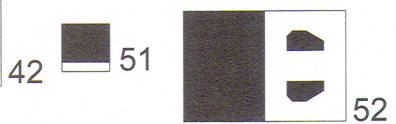
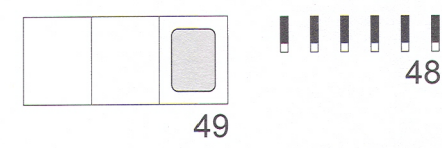
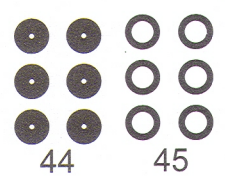
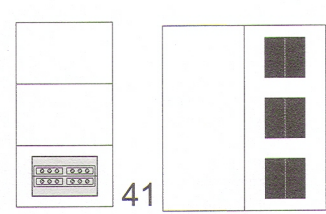
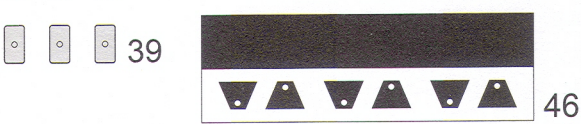
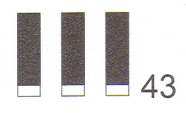
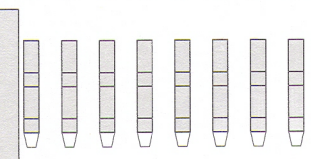
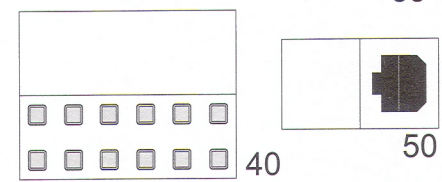
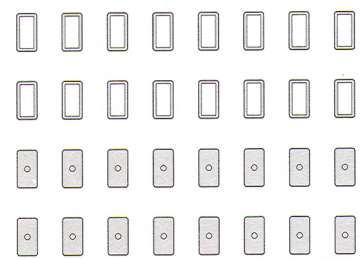
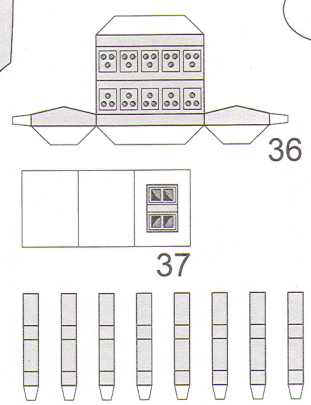
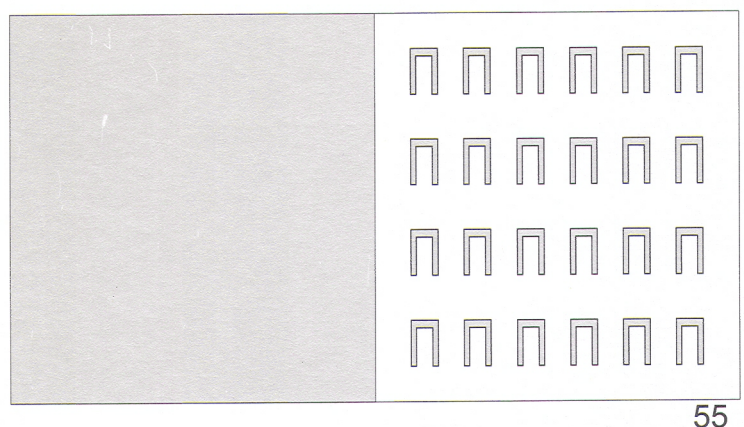
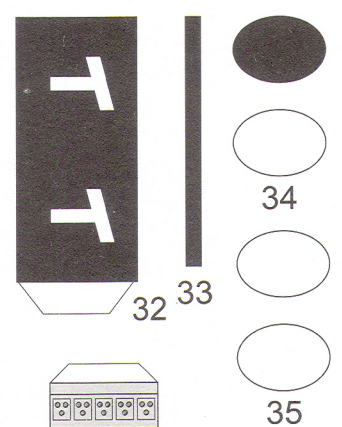
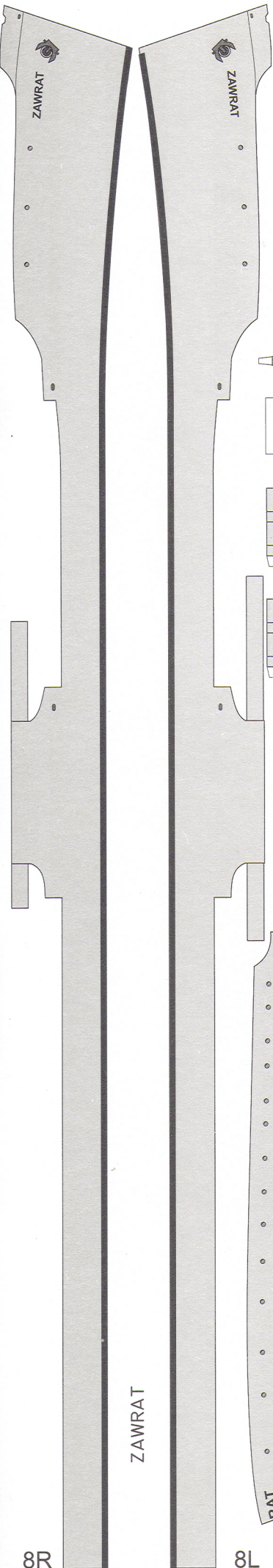
11

4

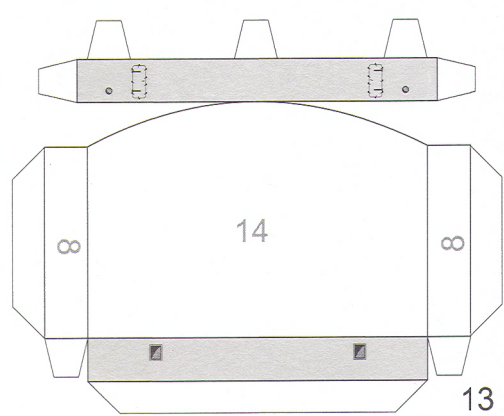
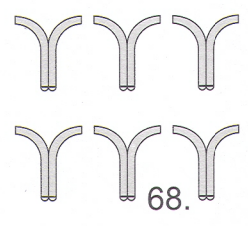
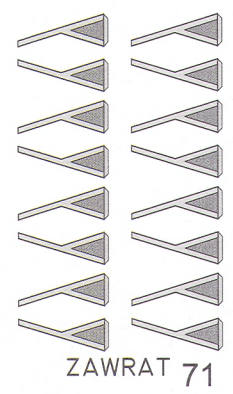
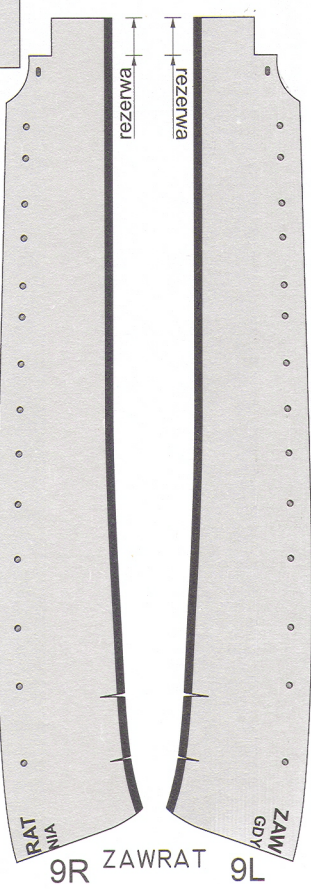
4

5

3



REZERWA



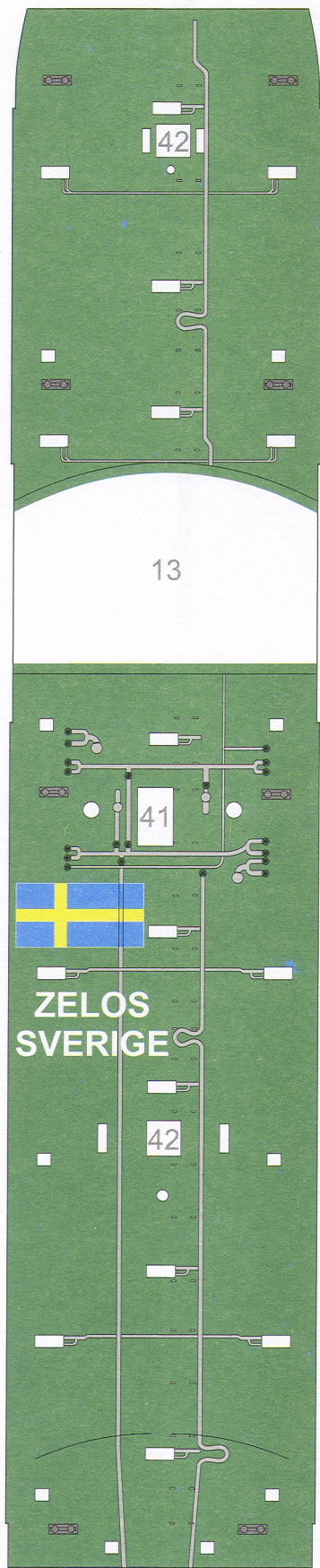
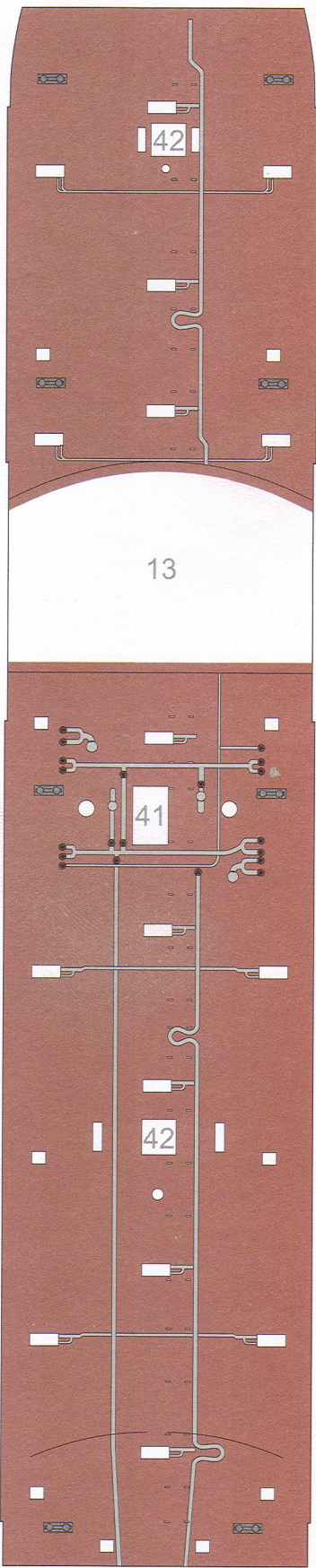
8R

8L

9R

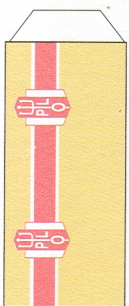
9L

13



ZAWRAT 11

REZERWA

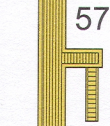


ZAWRAT 32



56

11



57

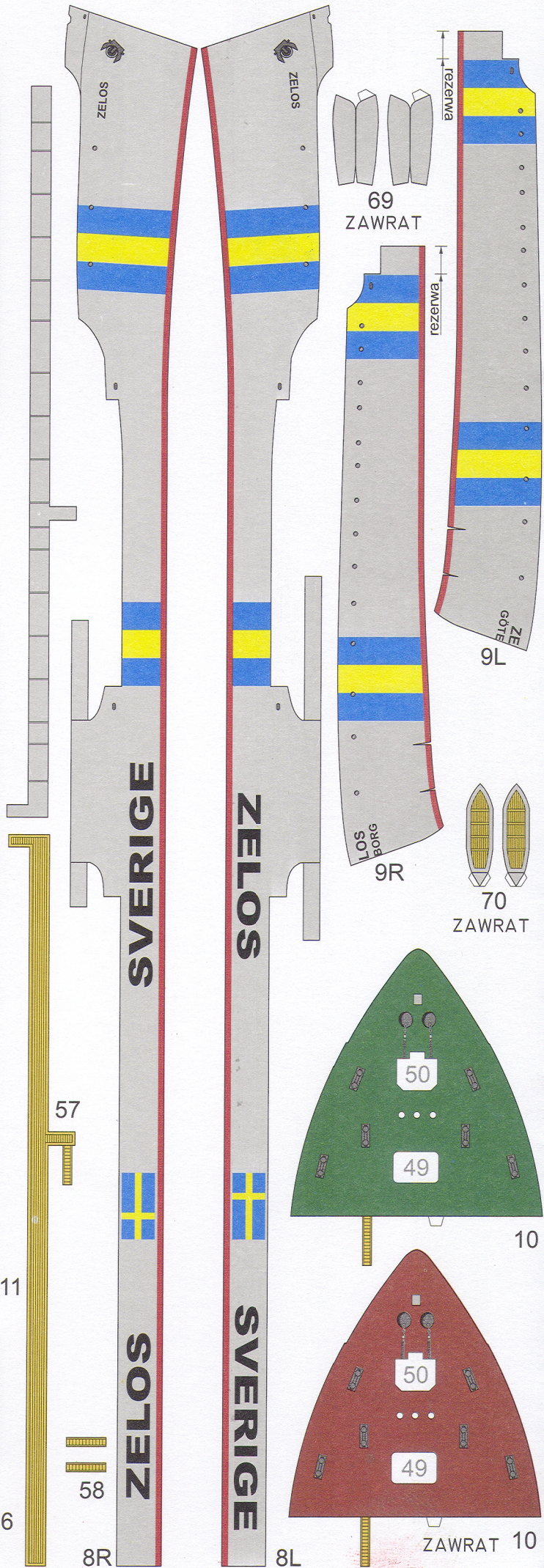


58

8R



59



69  
ZAWRAT

rezerwa

9L

LOS  
BORG  
9R

70  
ZAWRAT

10

ZAWRAT 10

8L

