

Canon Papercraft Mini-book

Toy Series

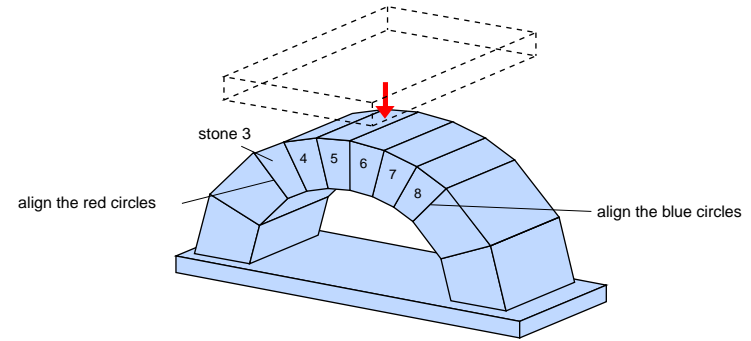
Arch Bridge

Just as with a real arch-shaped bridge, this paper sculpture distributes the load placed on it and can be quite strong. Assemble the parts and experiment. The bridge should be able to support fairly heavy objects, like books.



★Experiments

After stacking stones 3 through 8, as shown in the figure below, try placing heavy objects like books on top of the arch bridge. See how much weight it can hold!

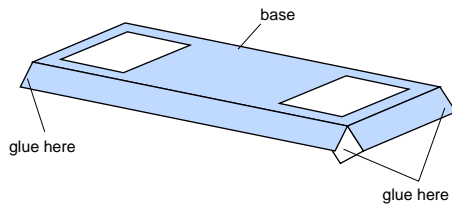


*Cut out the card above and save it. You can collect the cards from each of the Papercraft projects to make your own mini-book!

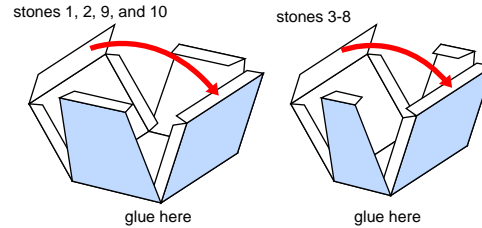
★Directions

Print out pages 1 through 5, cut out each individual part along their cut lines, and fold along the mountain and valley fold lines.

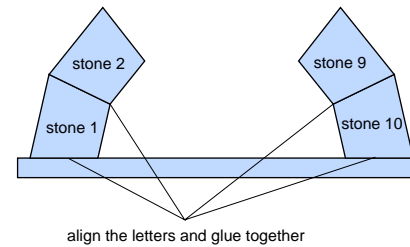
1. Build the base



2. Build the stones

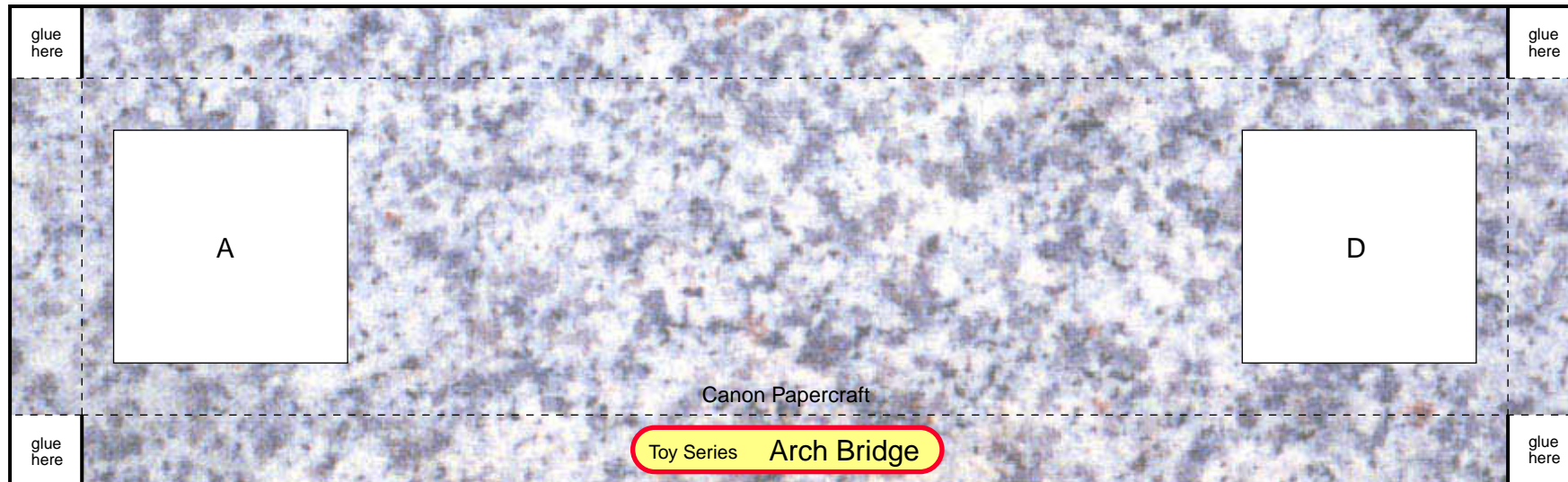


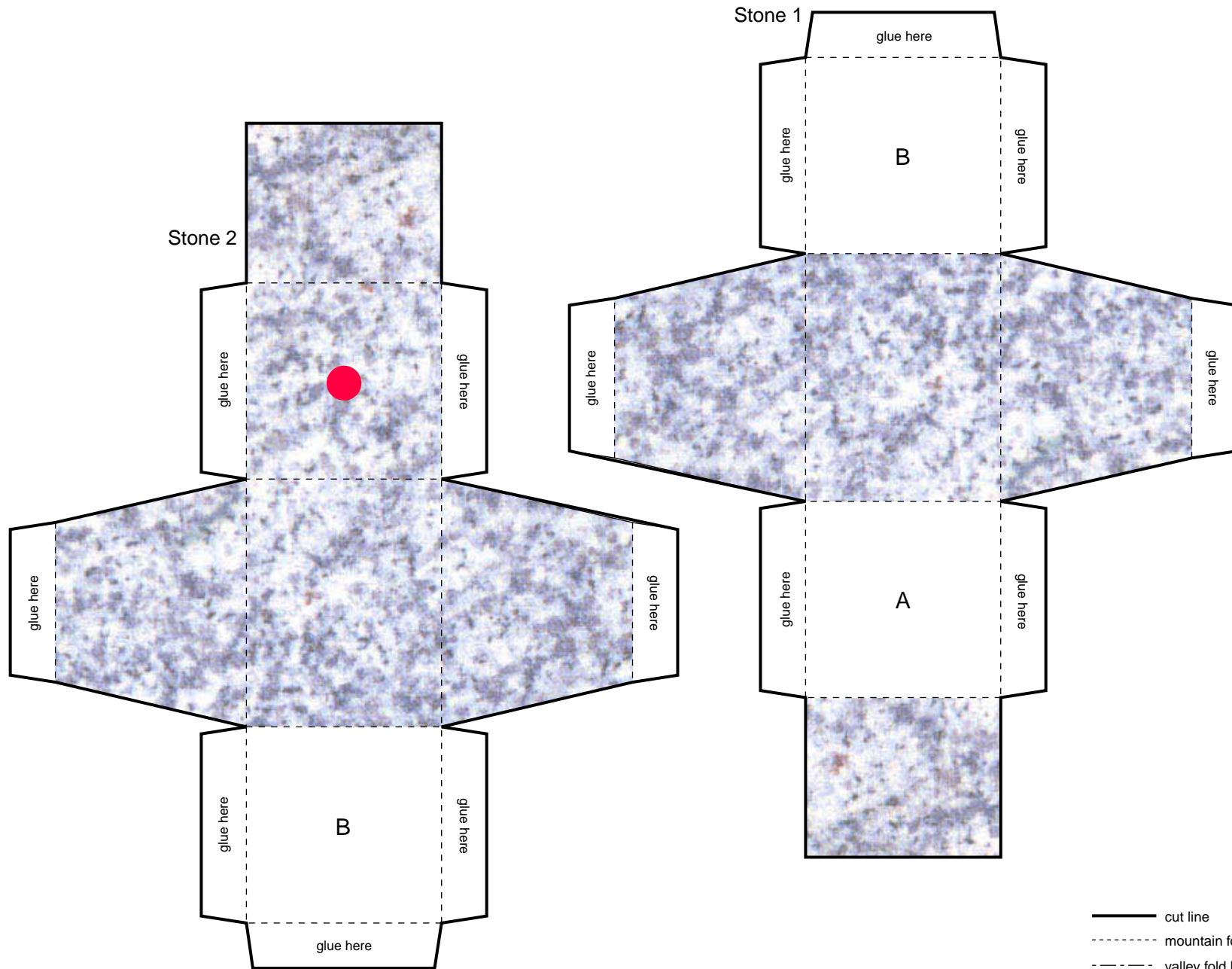
3. Assembly

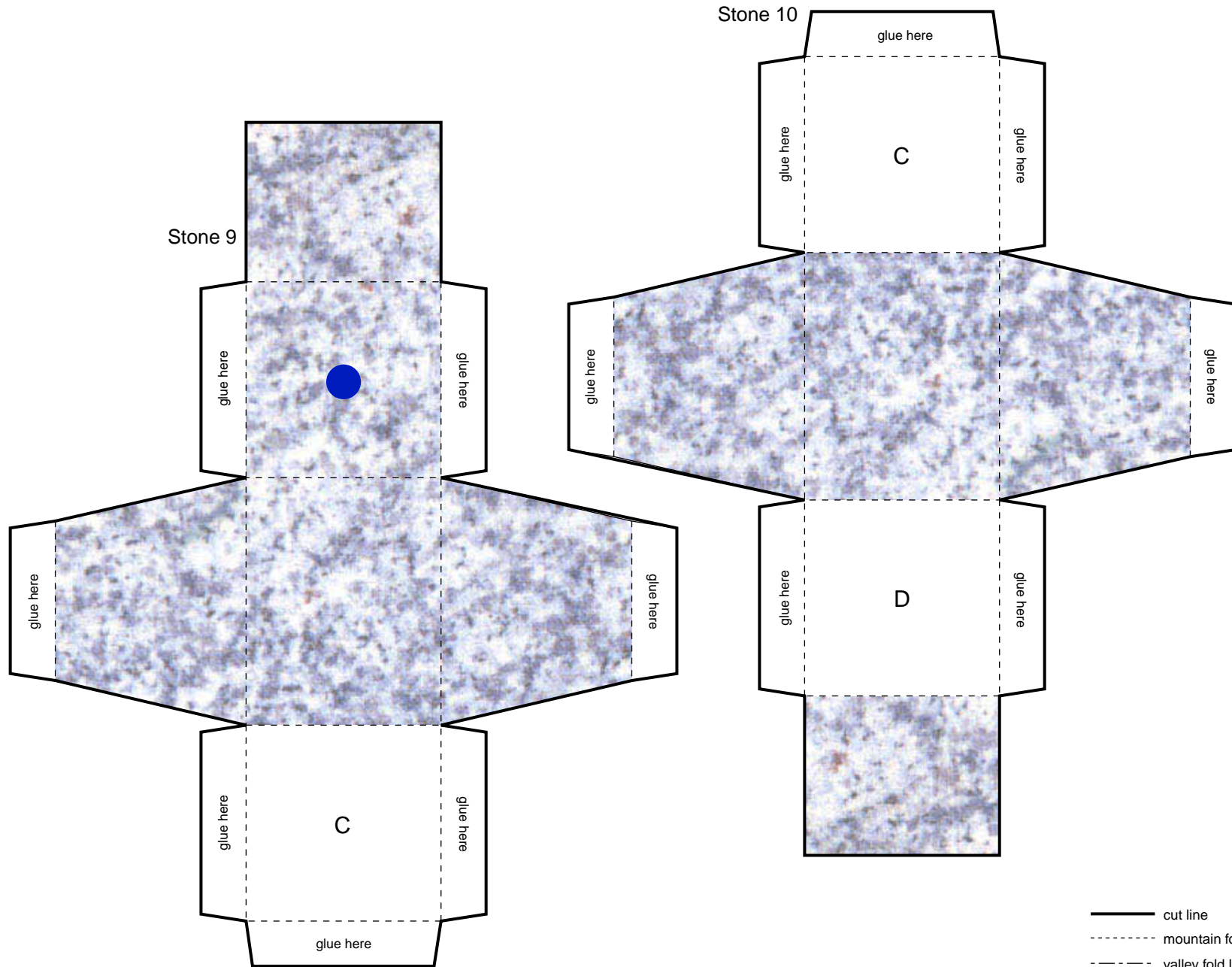


— cut line
 - - - - - mountain fold line
 - - - - - valley fold line

Base







— cut line
- - - mountain fold line
- · - valley fold line

