

Canon 3D-Papercraft Mini-book

Buildings of the World Series Egypt Abu Simbel

Abu Simbel is a temple carved out of solid rock, constructed by Ramses II in about the 14th century B.C.

The statues lined up at the entrance are 21 meters (69 feet) tall. The temple was moved recently to preserve it when a dam was built. The relocated temple preserves the exact orientation of the original location, so that the sun shines into the depths of the temple cave only twice a year, on the February 22 and October 22.

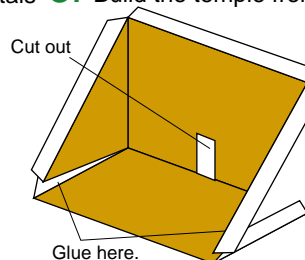
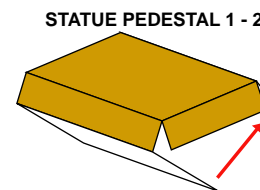
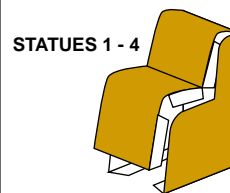


*Cut out the card above and save it. You can collect the cards from each of the Papercraft projects to make your own mini-book!

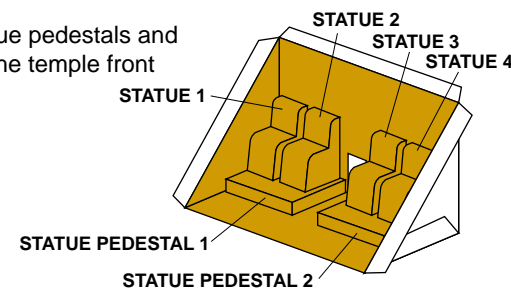
★ Directions

Print out pages 1 through 5, cut out each individual part along their cut lines, and fold along the mountain and valley fold lines.

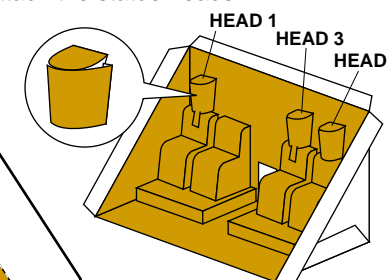
1. Build statues 1 - 4
2. Build the statue pedestals
3. Build the temple front



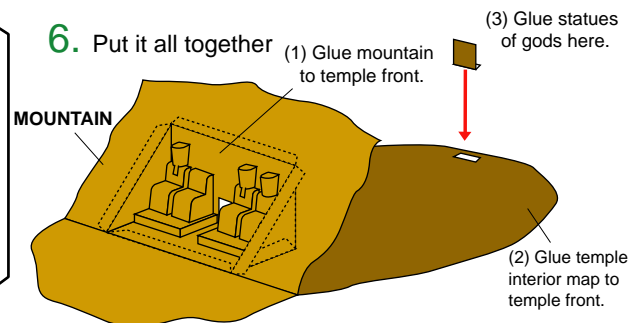
4. Attach statue pedestals and statues to the temple front



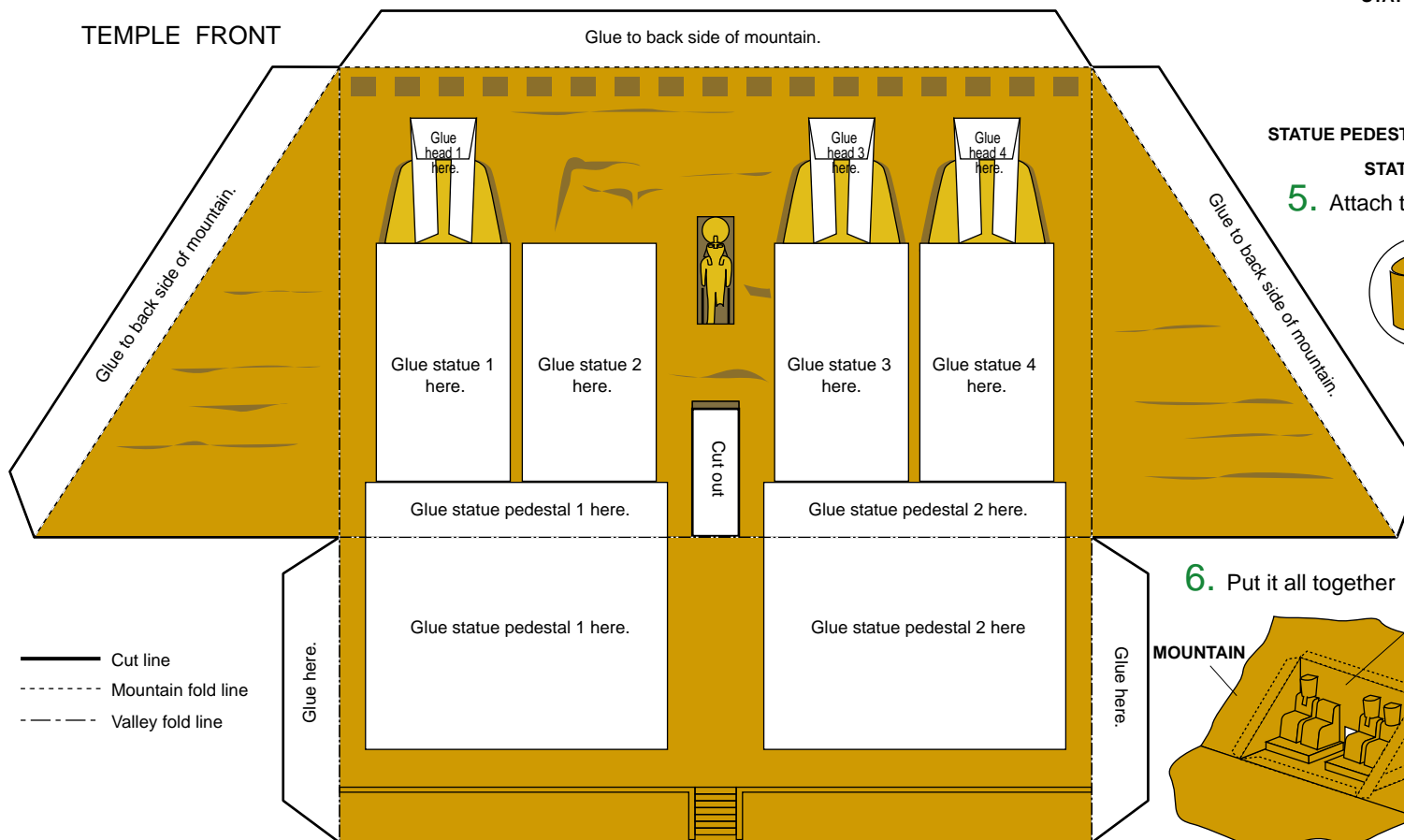
5. Attach the statue heads



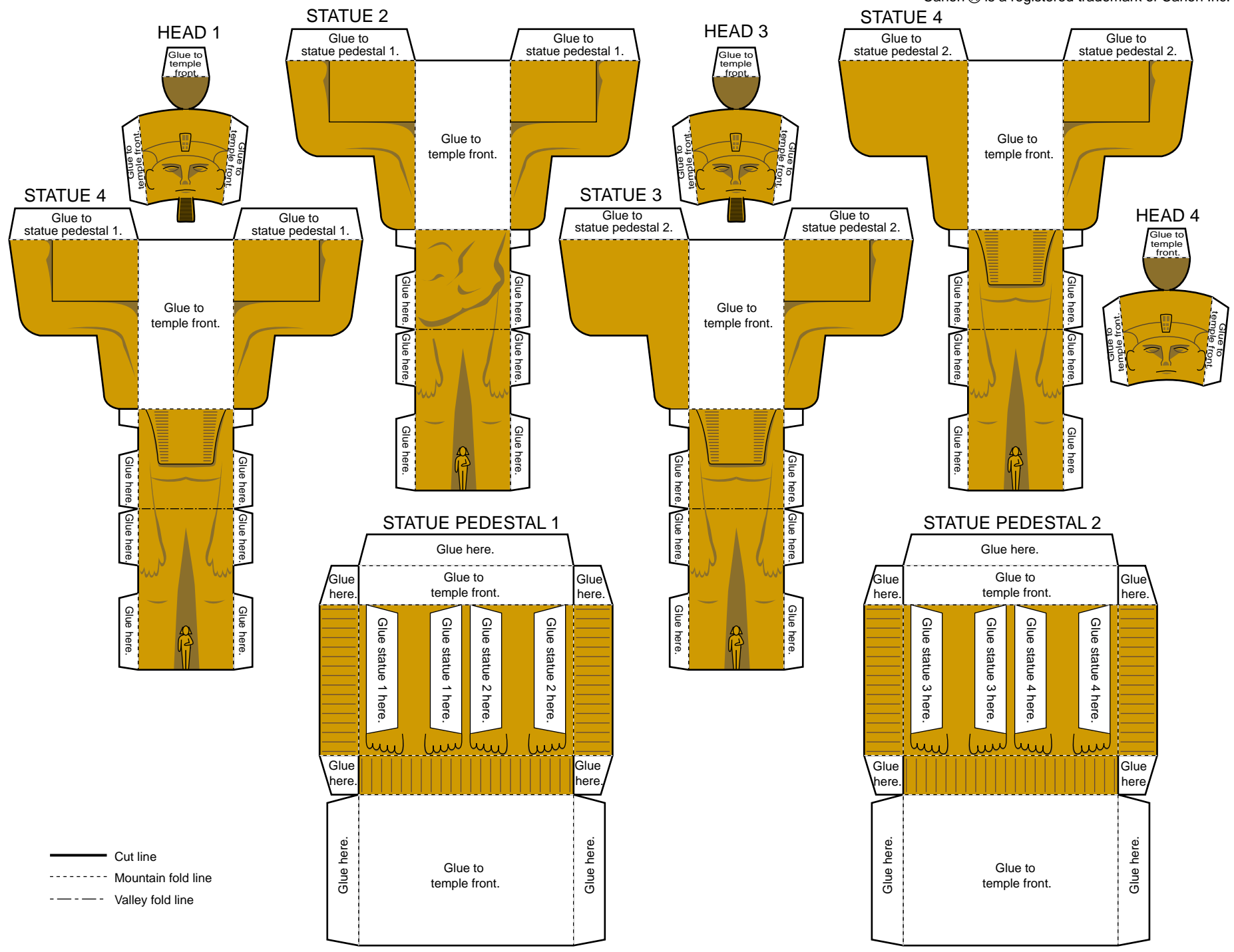
6. Put it all together



TEMPLE FRONT

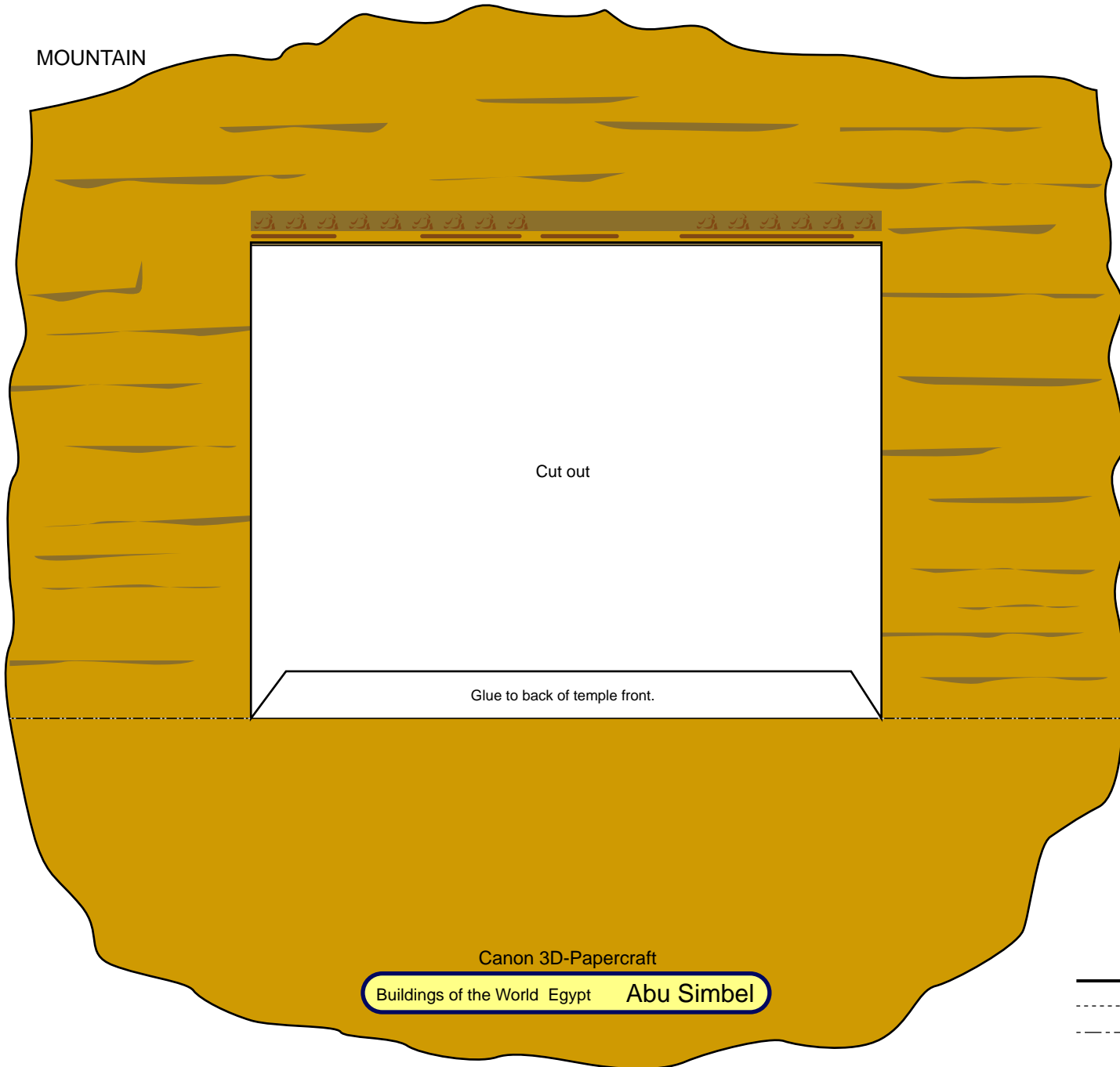


- Cut line
- - - Mountain fold line
- - - Valley fold line



- Cut line
- - - Mountain fold line
- · - Valley fold line

MOUNTAIN



Canon 3D-Papercraft

Buildings of the World Egypt Abu Simbel

- Cut line
- - - - Mountain fold line
- · - · Valley fold line

