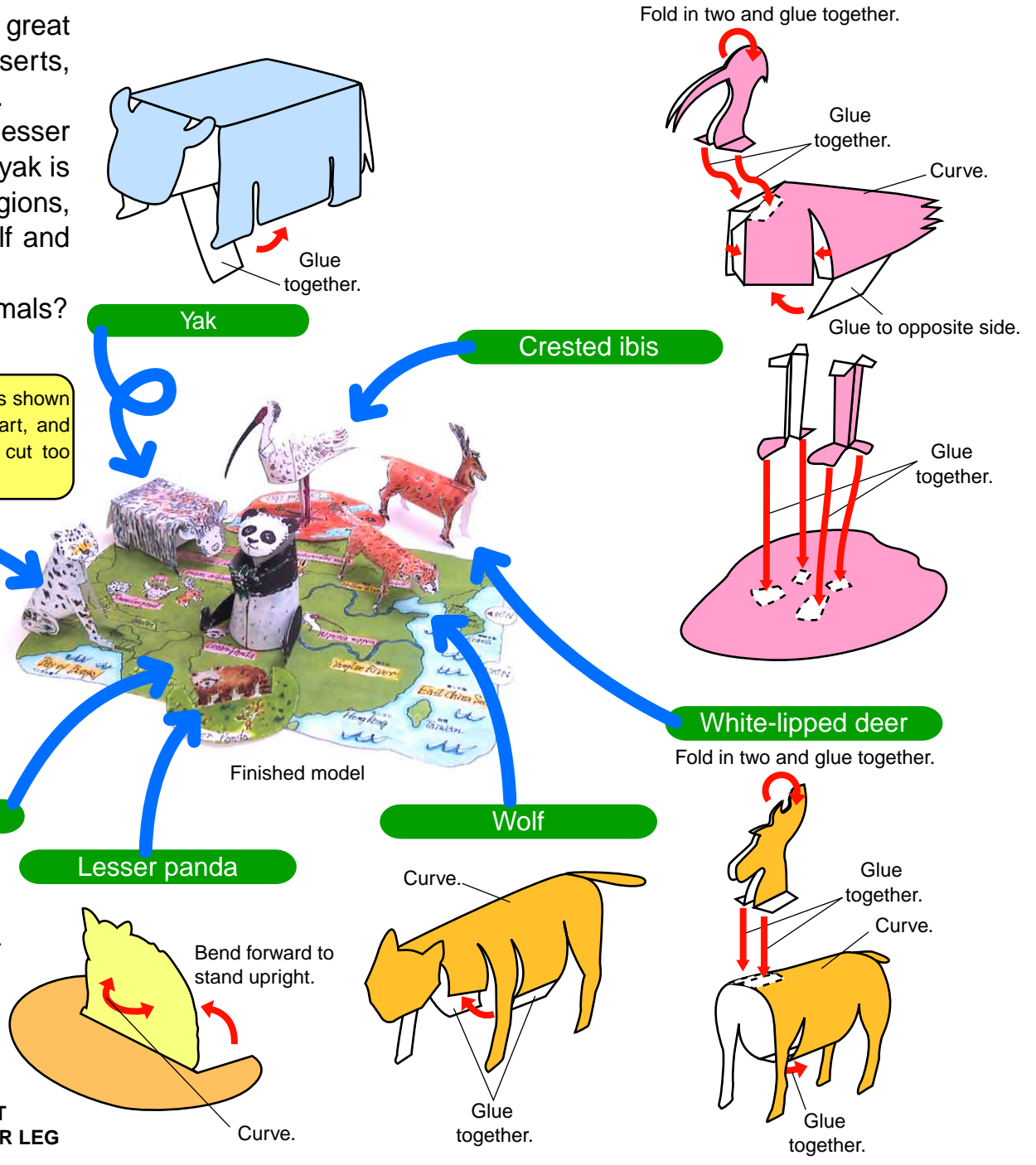


The vast Asian continent contains both great stretches of vegetation and broad deserts, and is home to a wide variety of animals. The bamboo-eating giant panda and lesser panda live in mountainous regions. The yak is indispensable to people living in cold regions, with its coat of long, fluffy hair. The wolf and snow leopard are skillful hunters. How much do you know about these animals?

Print out this pattern, cut out the pieces, and assemble as shown in the diagram. It may be easier to cut widely each part, and then trim the parts carefully. Don't worry if you can't cut too closely around some of the fine details.



Glue together in the order indicated by the numbers.

FRONT LEGS

RIGHT REAR LEG

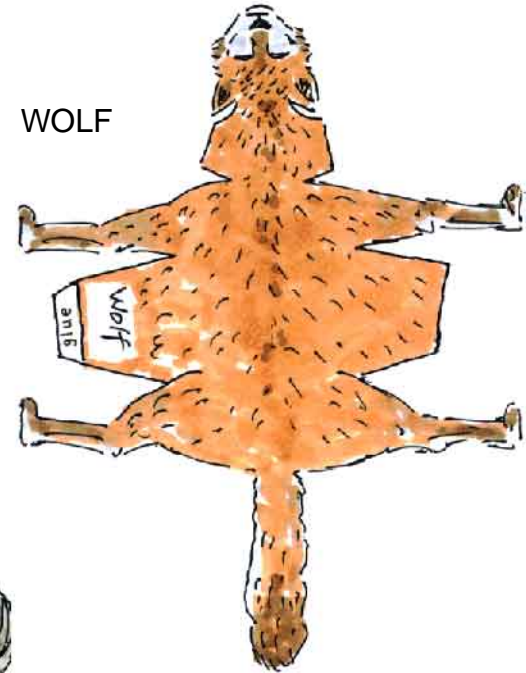
LEFT REAR LEG

GIANT PANDA

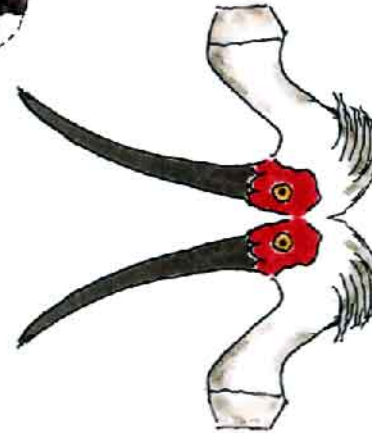
BODY



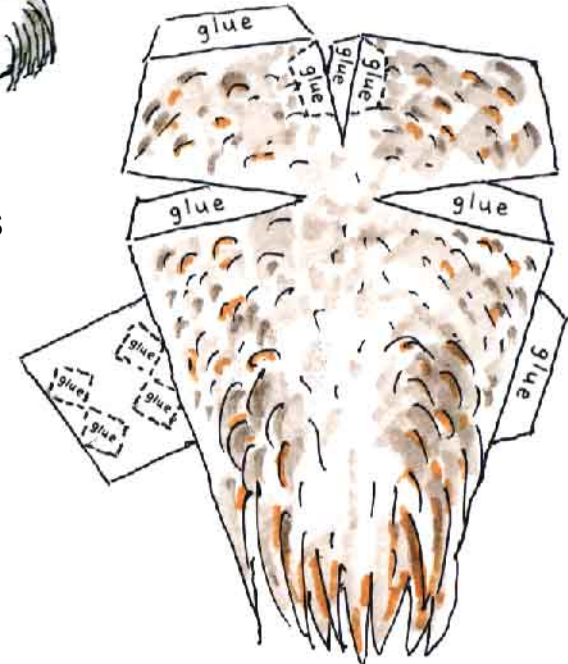
WOLF



CRESTED IBIS - HEAD



CRESTED IBIS - BODY

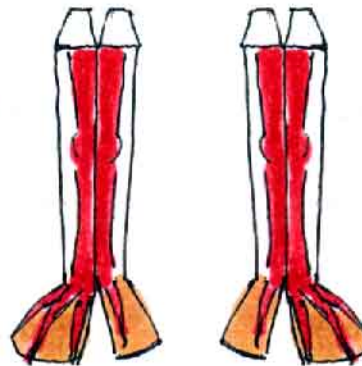


CRESTED IBIS - GROUND



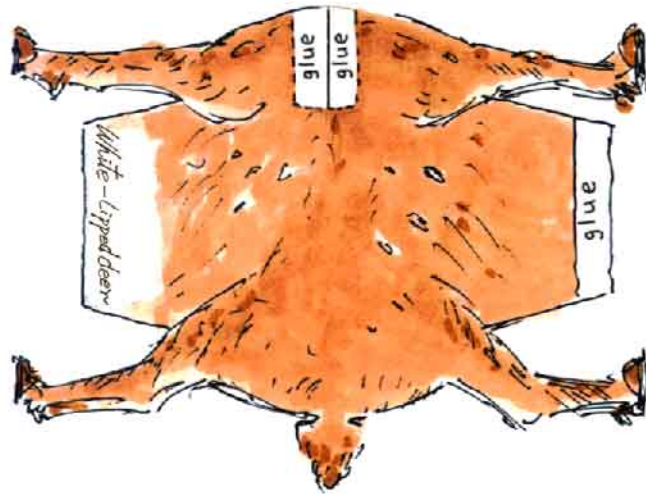
CRESTED IBIS - LEFT LEG

CRESTED IBIS - RIGHT LEG





WHITE-LIPPED DEER - BODY



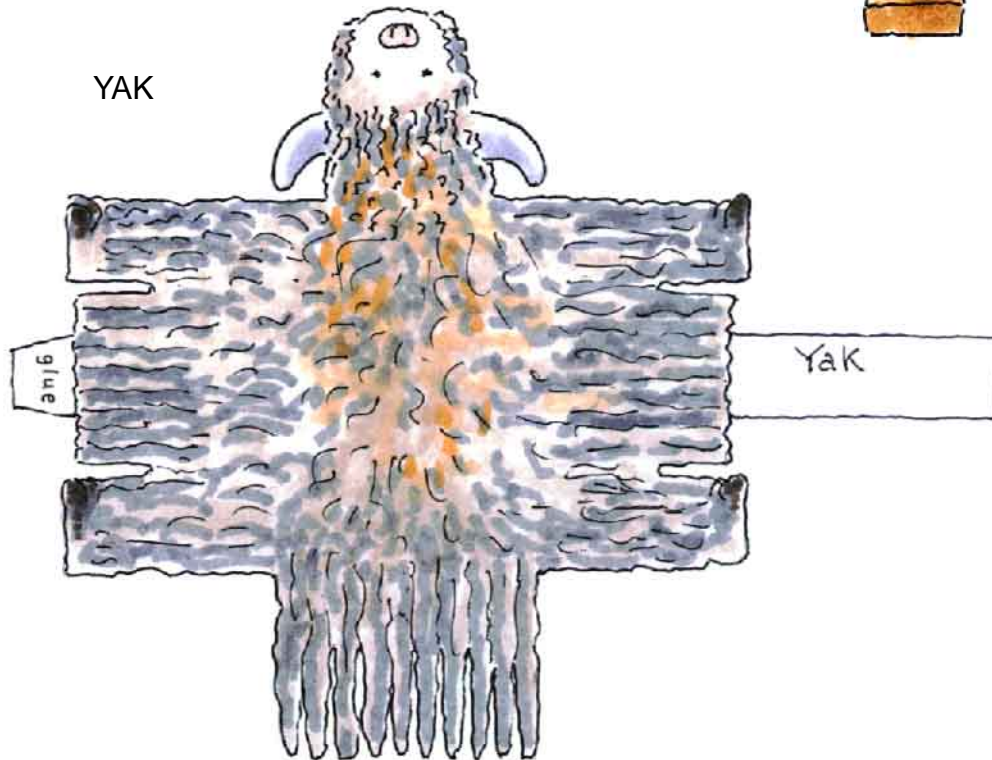
WHITE-LIPPED DEER - HEAD



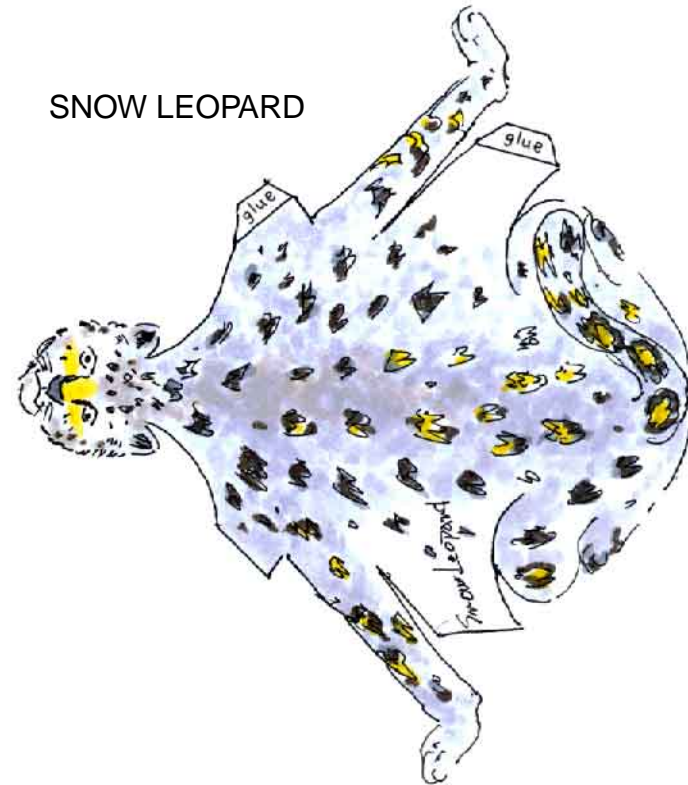
LESSER PANDA



YAK



SNOW LEOPARD



MAP

