

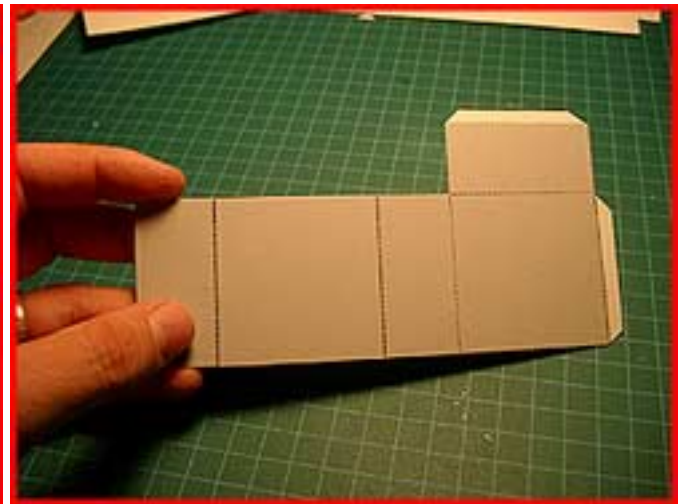
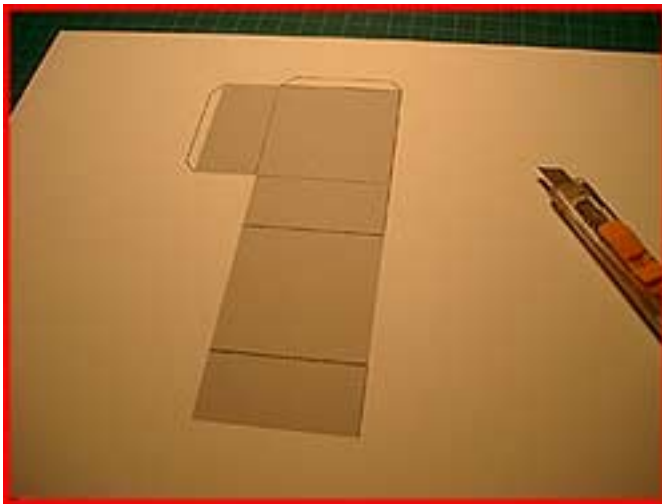


## "The Box Fold"

One of the most common folds in paper modeling might very well be the "box fold". Because it is so common we will use this "Box Fold" technique for each model that it applies to.

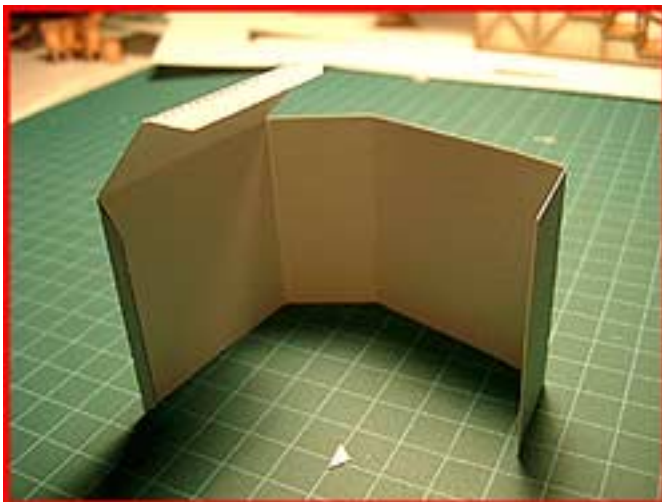
### Step 1

- Score and cutout the model where noted.



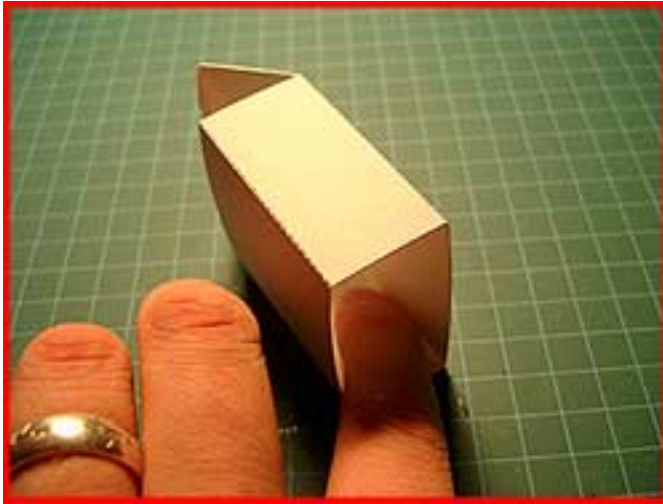
### STEP 2

- Fold the model as shown below. Apply a thin but even bead of glue on the wall side glue tab.



### STEP 3

By lying the model down you can achieve even pressure across the length of the glue tab. The table's hard surface ensures even glue distribution and tack while applying pressure to the tab. This technique should be used whenever possible with all models. If the model is too skinny to reach your fingers into, use a ruler or pencil to apply pressure. Stand the model up. Apply a bead of glue to the remaining top fold.



### STEP 4

Apply some light pressure to the outside of the top glue tab and move the tab into position flush with the wall. Once you have the proper position, place the model on its back and apply pressure to the tab from the inside of the model. Once again, if the model is too narrow to reach your fingers into, use a ruler or pencil to apply pressure. That's it!

