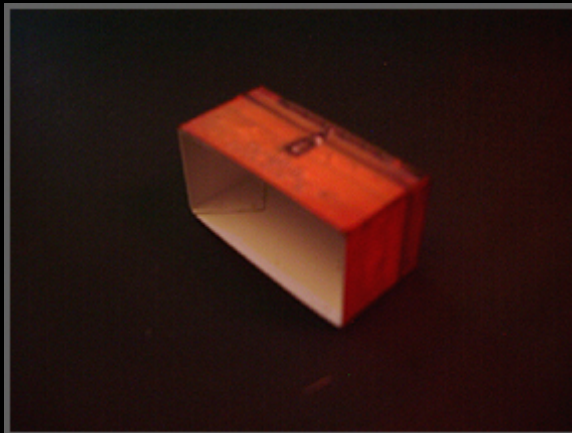




BEDS AND CHESTS

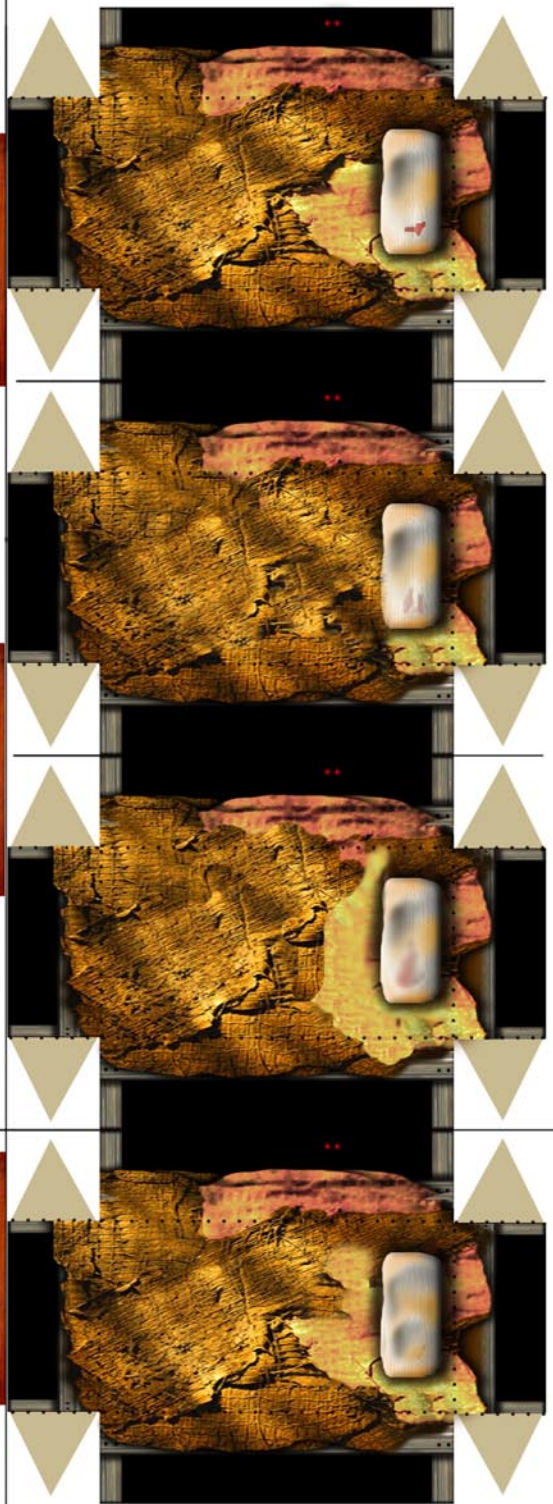
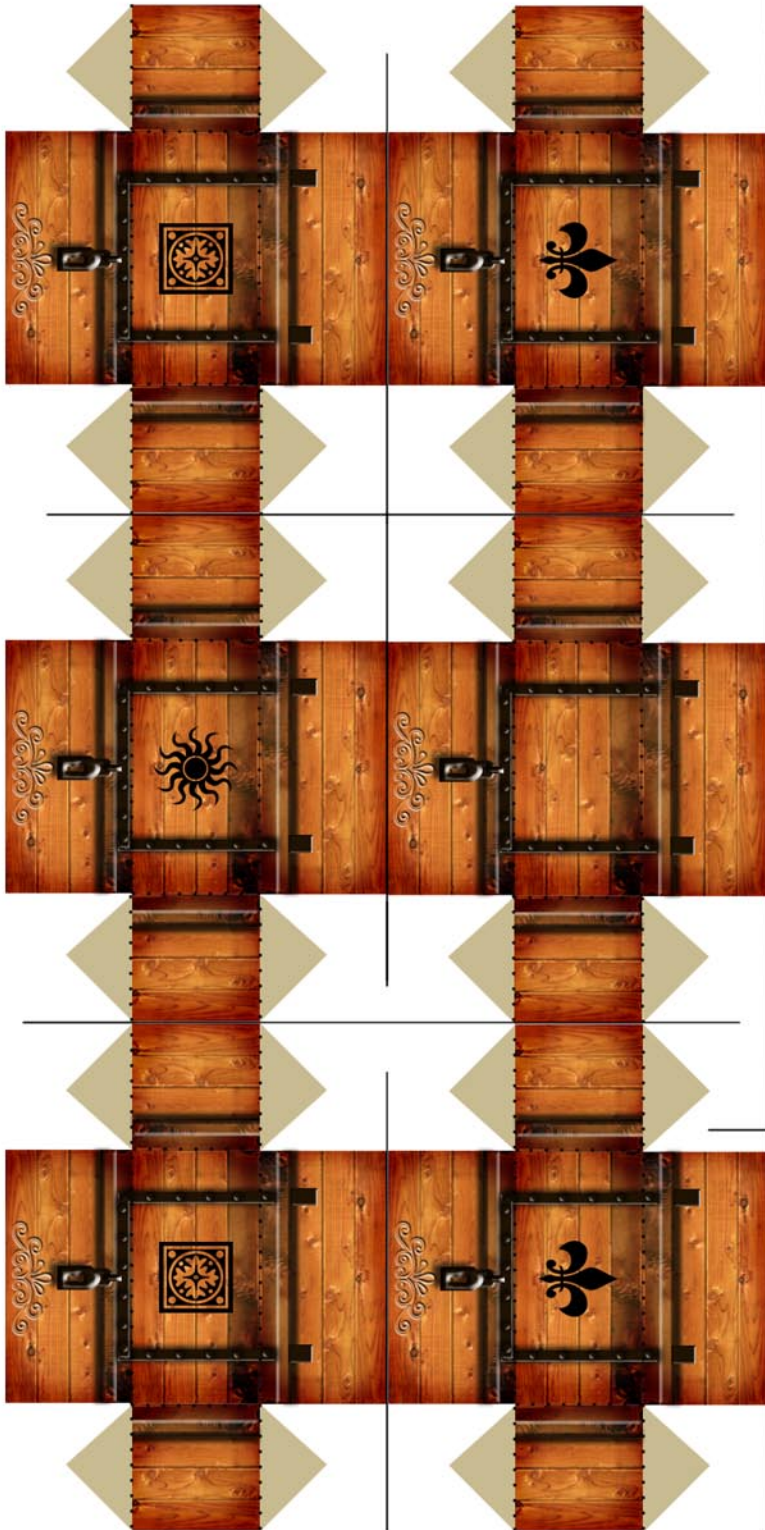


Difficulty Rating (Out of 10): 4 (None of the models on this sheet are particularly difficult to build but one sheet contains more cuts than the average model set.)

Recommended Duplications: 1-2 (Once again this is all dependent on how complicated you want your dungeon design to be. How many beds and chests do you require? One sheet contains four beds and four chests. The choice is yours!)

Steps:

- Cut and score where marked. Cut straight through the black cut lines to separate individual items.
- Fold your items where scored.
- Glue tabs to the inner walls. These models are all very box like and relatively self-explanatory. Refer to the above photos if necessary.



Cut Through Black Lines and Borders
Score and Fold Along Dotted Lines
Score and Fold on Reverse Side

