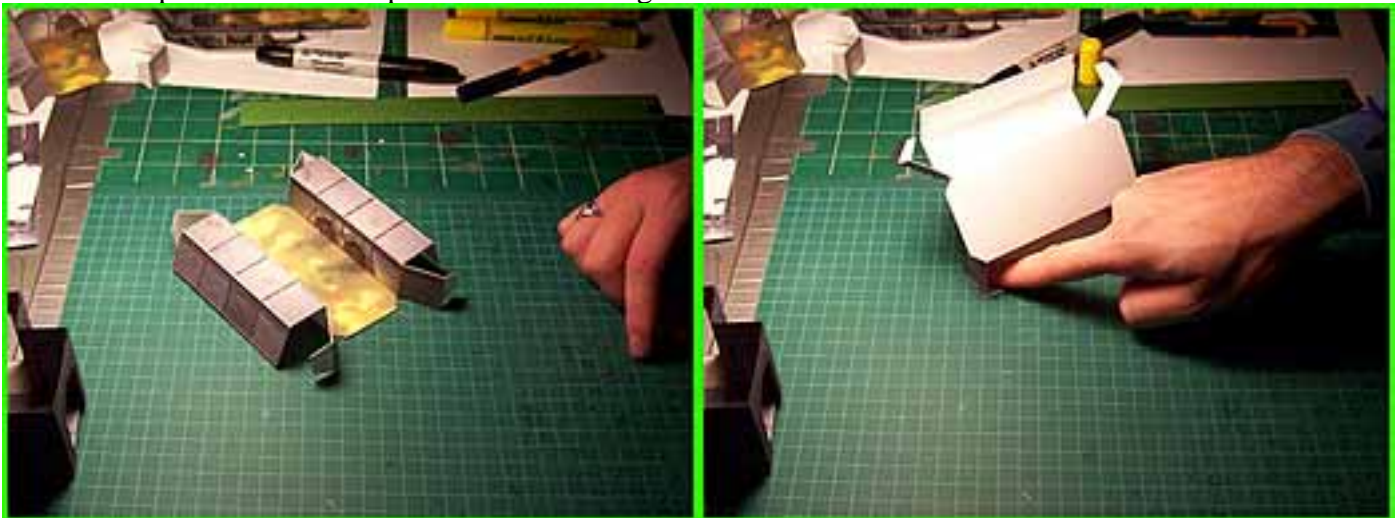




MODEL TYPE:	SEWER STRAIGHTAWAY
DIFFICULTY:	1 out of 5
APPROX BUILD TIME:	Quick - 5 to 10 minutes <i>(Time may vary depending on skill level)</i>
DUPLICATIONS <i>(Suggested):</i>	4 to 6 copies <i>(optimal)</i>
EDGING COLOR:	Grey or Black felt <i>(What is "Edging"?) Please refer to the included "Beginners Guide".</i>

STEP 1:

Cut and Score and fold your models as noted paying close attention to areas marked with reverse side scoring arrows. Apply a thin coat of glue to one of the glue tabs and glue flush with the end of the riser section. *It's important to note the position shown in the below photos. Whenever possible you should follow this technique and apply pressure to tabs against your worktable as shown. This simple method will ensure even glue distribution and a flawless bond.* Repeat the above step with the remaining three tabs.



STEP 2:

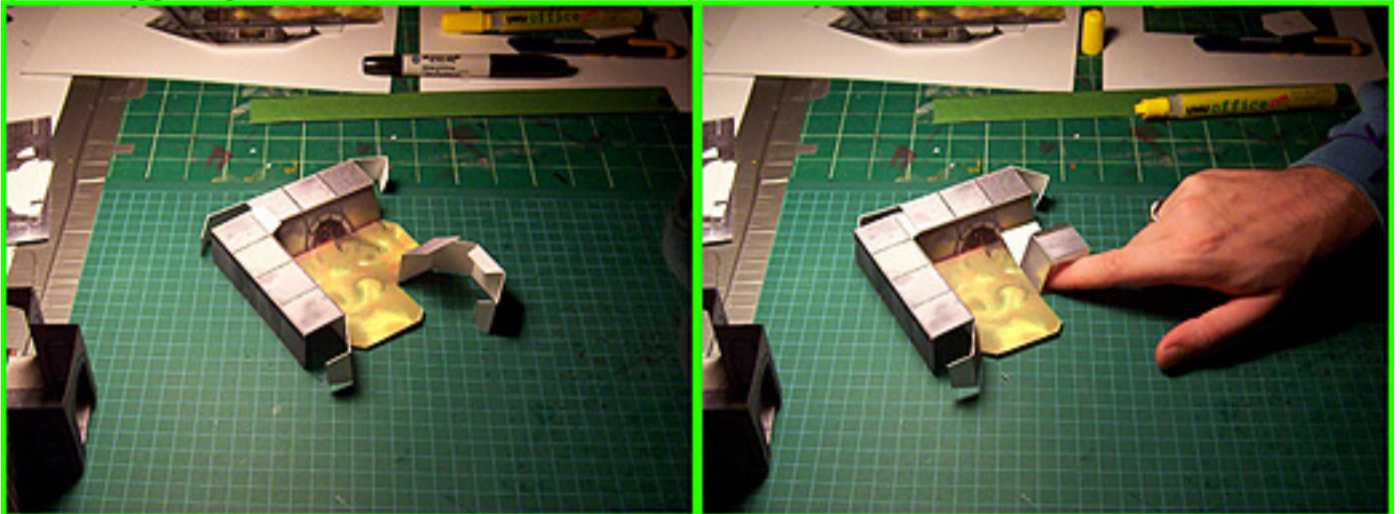
All done...Simplicity defined! *(Please note: The sewer extensions on each end are intended to overlap other sewer sections thereby hiding the seam)* Now build MORE!



MODEL TYPE:	SEWER CORNER
DIFFICULTY:	3 out of 5
APPROX BUILD TIME:	Moderate - 10 to 15 minutes <i>(Time may vary depending on skill level)</i>
DUPLICATIONS <i>(Suggested):</i>	4 to 6 copies <i>(optimal)</i>
EDGING COLOR:	Grey or Black felt <i>(What is "Edging"?) Please refer to the included "Beginners Guide".</i>

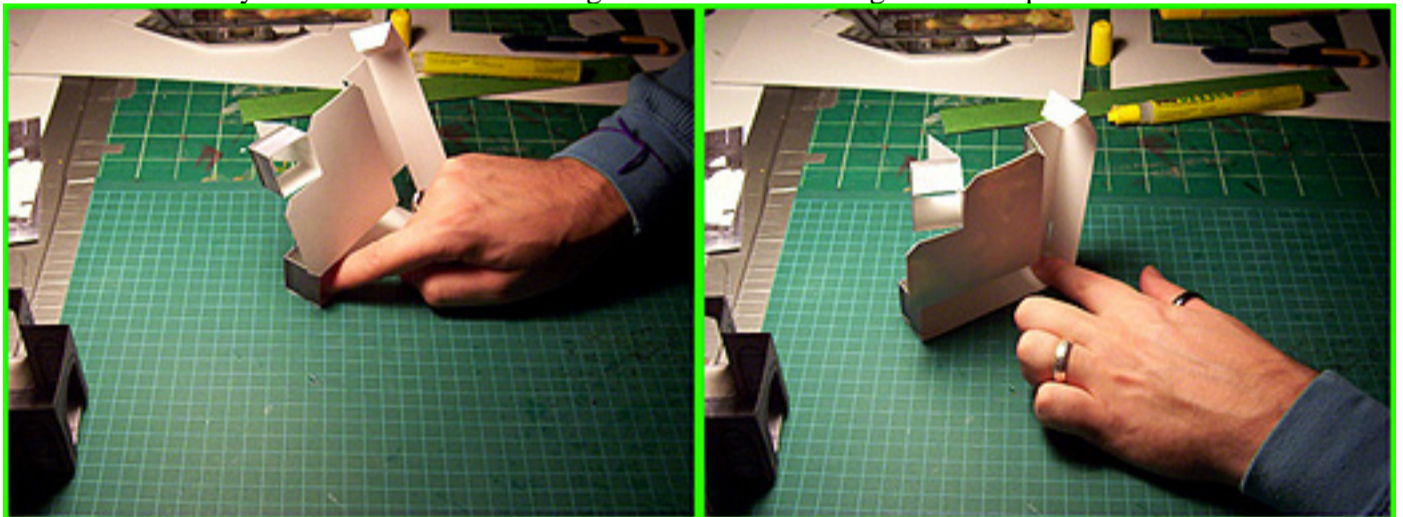
STEP 1:

Cut, score and fold your model as noted paying close attention to areas marked with reverse side scoring arrows. Also note the small straight cut along the base of the single riser block. Apply a thin coat of glue to the 1-inch risers inside glue tab and affix to the opposing side.



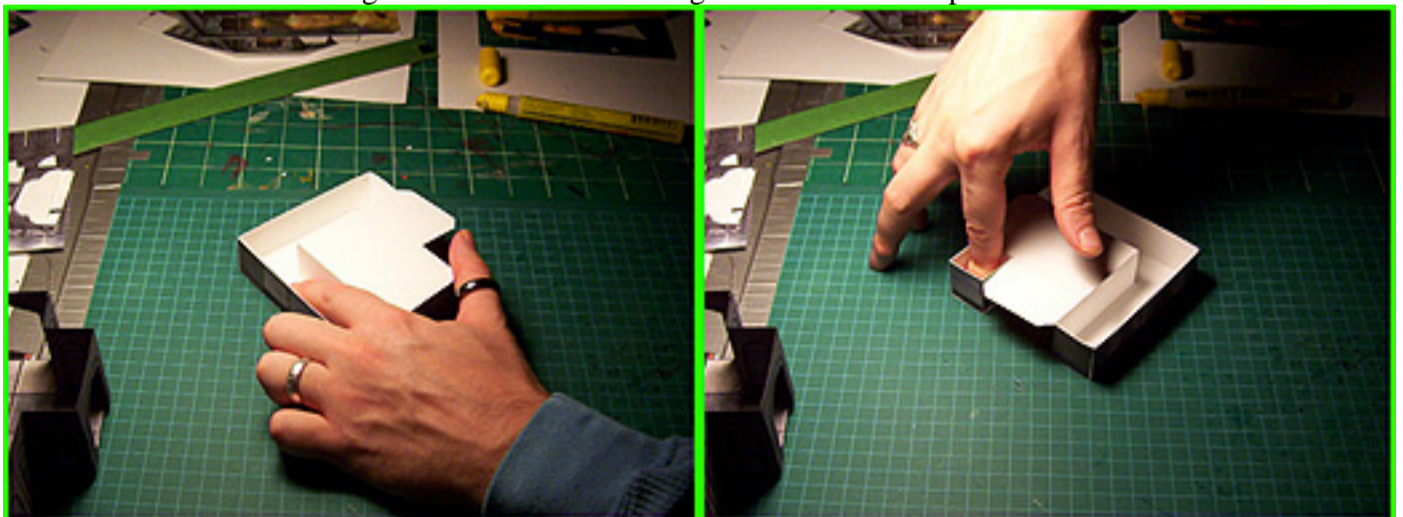
STEP 2:

Rotate your model on its side and glue the three outside glue tabs in place.



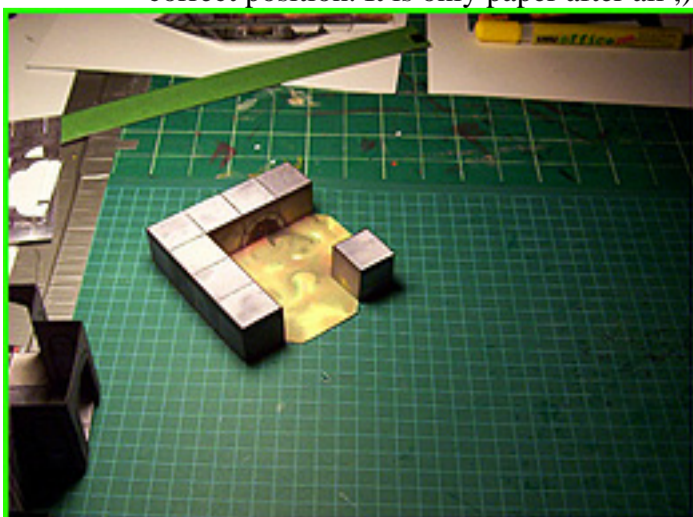
STEP 3:

Flip your model on its back and pull up the joining glue tab in the middle chamber. Glue the two seams together. Glue the remaining 1-inch riser tab in place.



STEP 4:

This model is a relatively complicated shape and if your cutting was out of whack you may experience some warping. If that's the case don't be afraid to bend the model into the correct position. It is only paper after all ;)

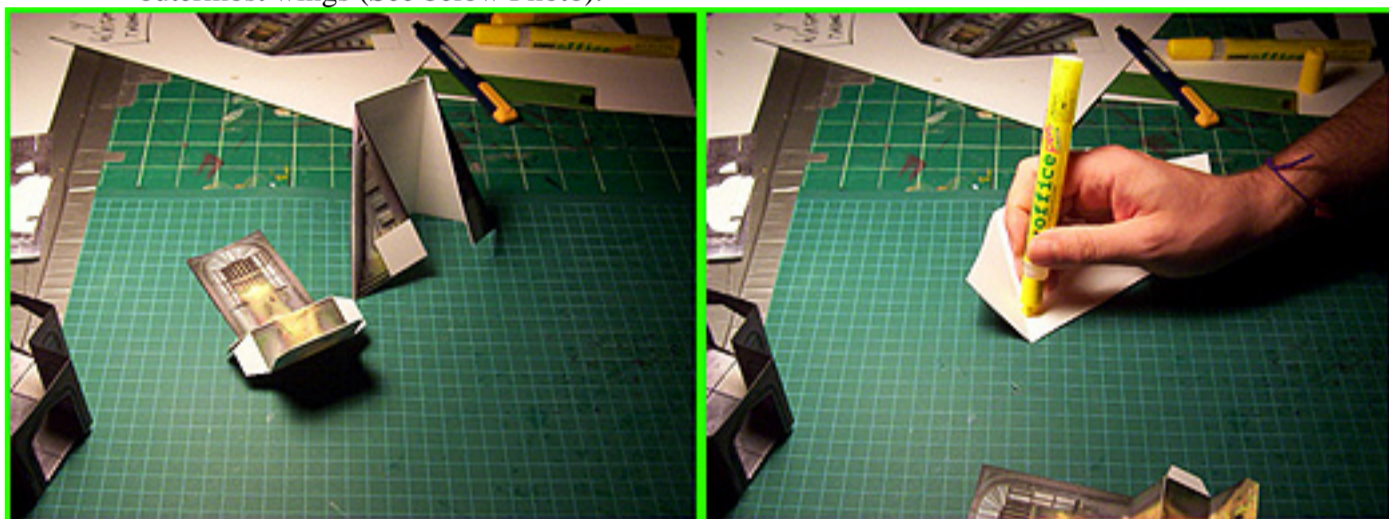


WORLDWORKS GAMES
DUNGEONTOURS™
GOthic REALMS™

MODEL TYPE:	SEWER OUTLET
DIFFICULTY:	2 out of 5
APPROX BUILD TIME:	Quick - 5 to 10 minutes <i>(Time may vary depending on skill level)</i>
DUPLICATIONS <i>(Suggested):</i>	2 to 4 <i>(optimal)</i>
EDGING COLOR:	Grey or Black and Yellow <i>(What is "Edging"? Please refer to the included "Beginners Guide".)</i>

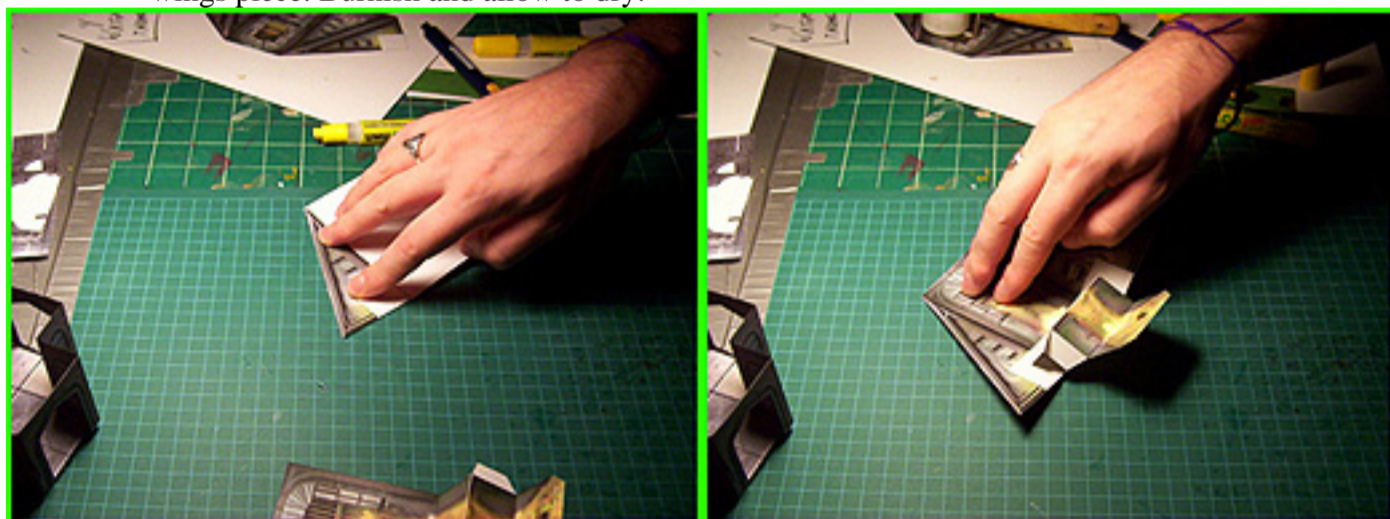
STEP 1:

Cut, score and fold your models as noted paying close attention to areas marked with reverse side scoring arrows. Apply a thin but even coat of glue to the underside of the two outermost wings (See below Photo).



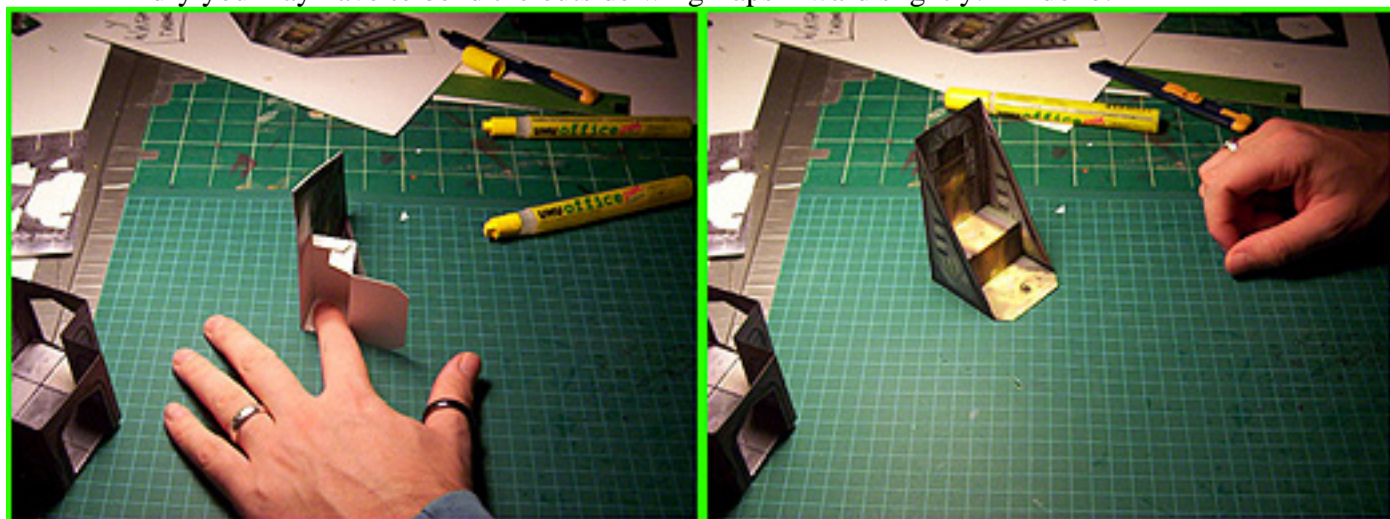
STEP 2:

Burnish (apply even pressure) to the two wings and allow at least one minute drying time. Apply a thin coat of glue to the backside of the sewer outlet and place in the white space between the two wing sections. Be careful to align the outlet with the top edge of the sewer wings piece. Burnish and allow to dry.



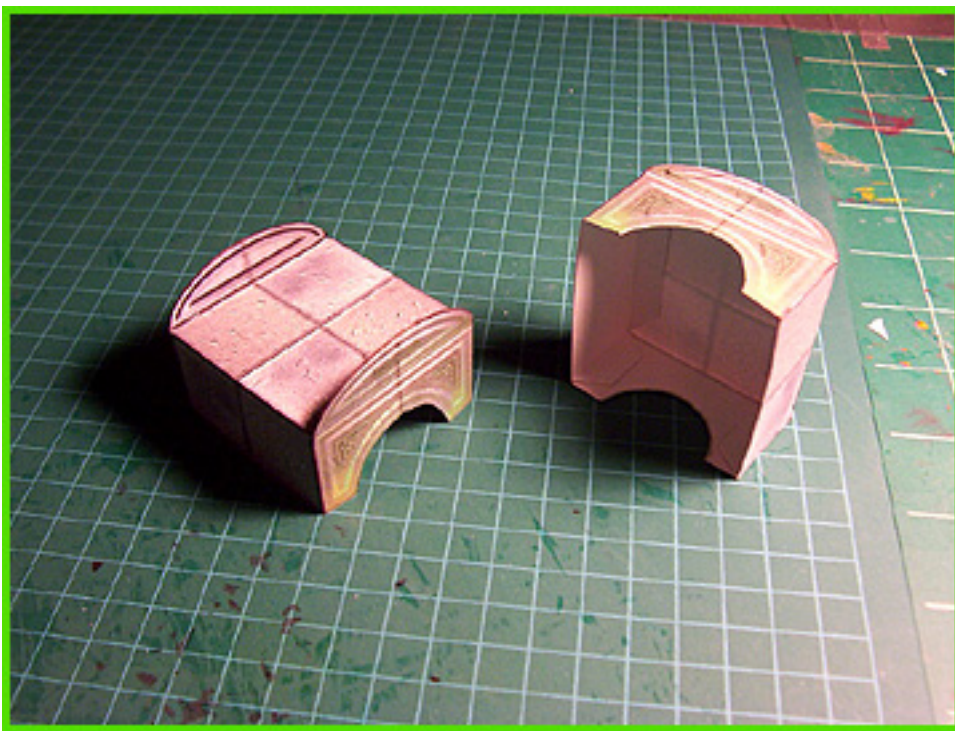
STEP 3:

Flip the model on its side bending inward the outer wing. Apply a thin coat of glue to the two sewer outlet glue tabs and place them within the white square. Apply pressure for at least 30 seconds. Allow a short drying period and repeat the step on the other side. Once dry you may have to bend the outside wing flaps inward slightly. All done!





MODEL TYPE:	SEWER BRIDGE
DIFFICULTY:	2 out of 5 <i>(Curved cuts)</i>
APPROX BUILD TIME:	Quick – 5 to 10 minutes <i>(Time may vary depending on skill level)</i>
DUPLICATIONS <i>(Suggested):</i>	2 to 4 <i>(optimal)</i>
EDGING COLOR:	Grey or Black <i>(What is “Edging”? Please refer to the included “Beginners Guide”).</i>



STEP 1:

Cut, score and fold your model as noted paying careful attention to areas marked with reverse side score lines. **DO NOT REMOVE** the white space surrounding the curved rail sections at this time. Glue the curved rail sections together (image on both sides) allowing a one-minute dry time and then remove the surrounding white space.

STEP 2:

Glue the two longest tabs to the underside of the bridge. Glue the remaining two end tabs in place.