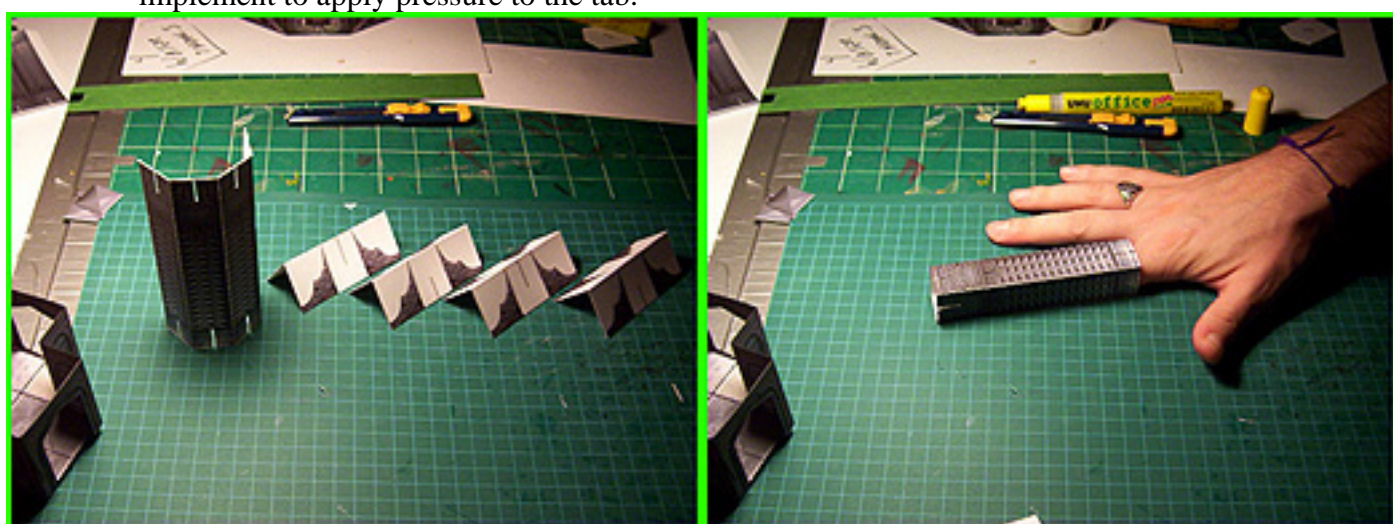




MODEL TYPE:	GRAND COLUMNS
DIFFICULTY:	4 out of 5 (multiple curved and small cuts)
APPROX BUILD TIME:	Moderate - 10 to 15 minutes (Time may vary depending on skill level)
DUPLICATIONS (Suggested):	4 to 6 (optimal)
EDGING COLOR:	Grey or Black (What is "Edging"? Please refer to the included "Beginners Guide".)

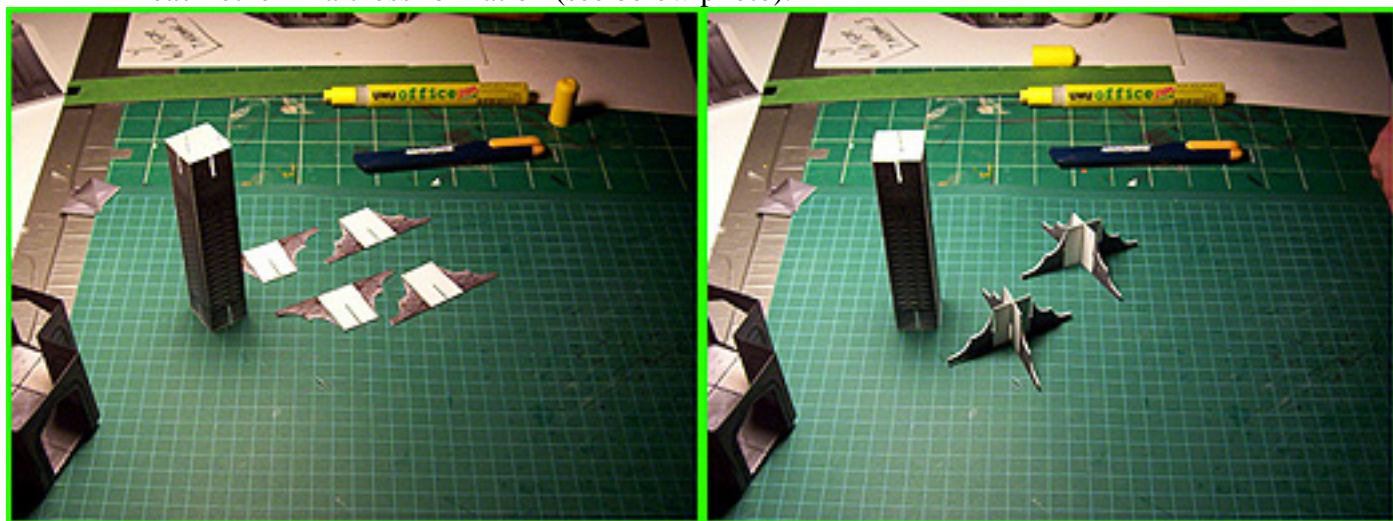
STEP 1:

Cut, score and fold your models as noted. You may at this time remove the small white slits on the main column at its base and peak (a steady hand can accomplish this freehand). **DO NOT REMOVE** the white space from the four curved column toppers at this time. Apply a thin strip of glue to the column glue tab and adhere to the inside of the column wall. If you have problems reaching your fingers inside the column use a pencil or any other skinny implement to apply pressure to the tab.



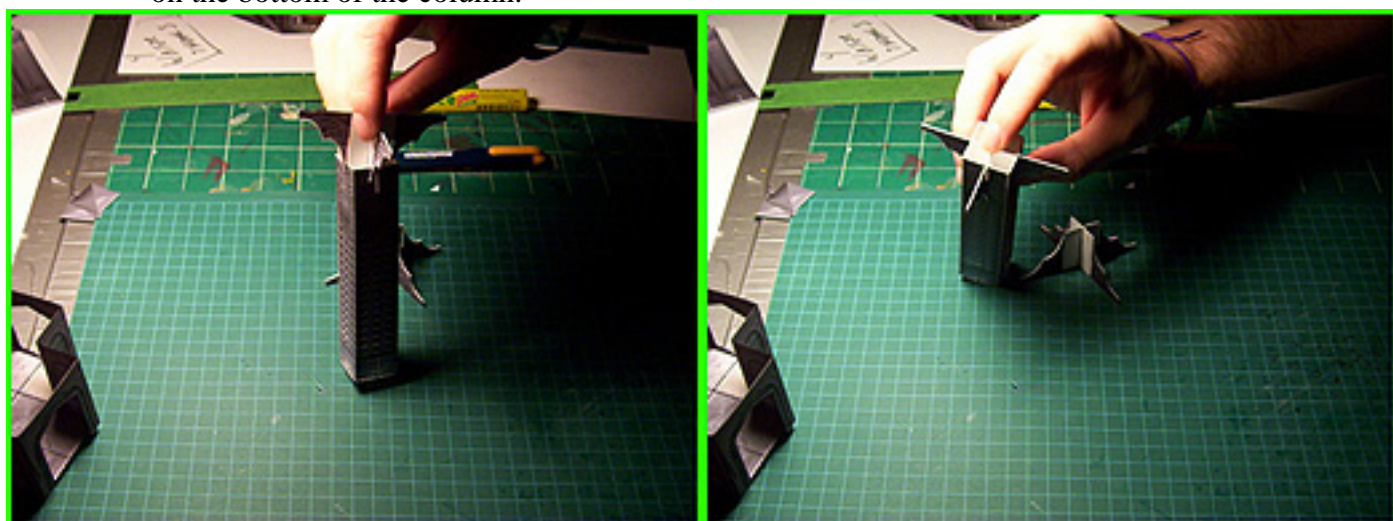
STEP 2:

Fold over and glue the four curved column toppers making sure to distribute the glue evenly. Allow one a one-minute dry time and carefully remove the outside curved white space from the sections (**DO NOT REMOVE** the central white space on each topper). Most of the cuts on these pieces will need to be done freehand. Slide the opposing sections on top of each other in a cross formation (see below photo).



STEP 3:

Carefully slide one of the toppers into the corresponding slits on the top of the column. Slowly work the piece down checking each side as you slide it in place. Repeat this process on the bottom of the column.



STEP 4:

Apply a few beads of glue to the cross in the middle of the topper and place the small square topper in this area. Apply pressure and allow to dry. That's it! A little on the painful side but a beautiful little atmospheric model.

