

WORLDWORKS GAMES

ArenaWorks™

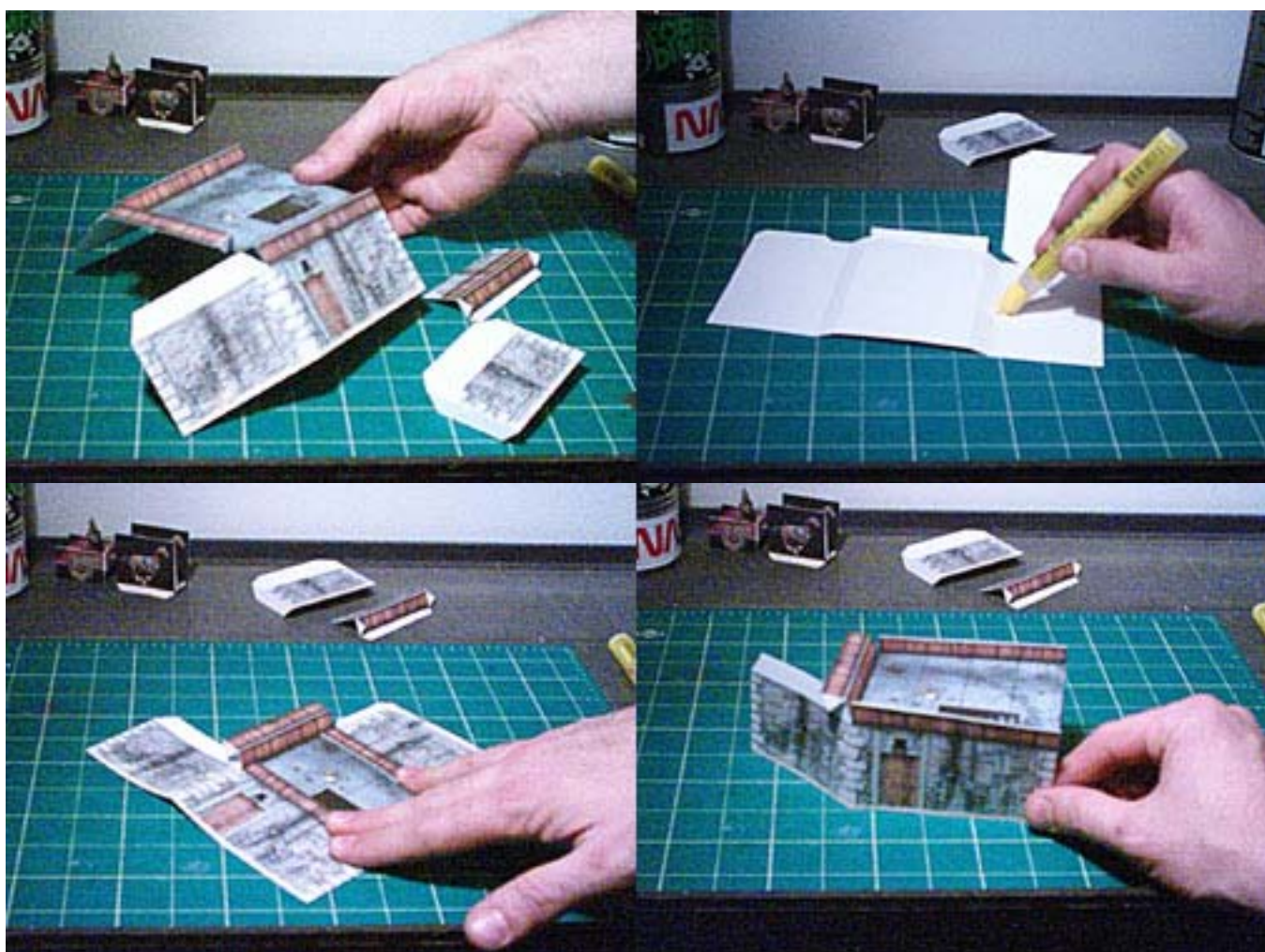
MODEL TYPE:	FLAT-TOP BUILDING
DIFFICULTY:	3 out of 5
APPROX BUILD TIME:	Quick - 5 to 10 minutes <i>(Time may vary depending on skill level)</i>
DUPLICATIONS (Suggested):	2 to 3 copies (optimal)
EDGING COLOR:	Grey or Black felt <i>(What is "Edging"?) Please refer to the included "Beginners Guide".</i>

This versatile building can stand alone or be integrated into the arena stands. If you don't need the stairwell on top cover it with the big wood panel from the "Fixings" sheet. If you wish to join it to the stands cut a section from the railing where you want to join, likewise for any stairs. This model fits entirely on one page, so it's a bit of a tricky build.



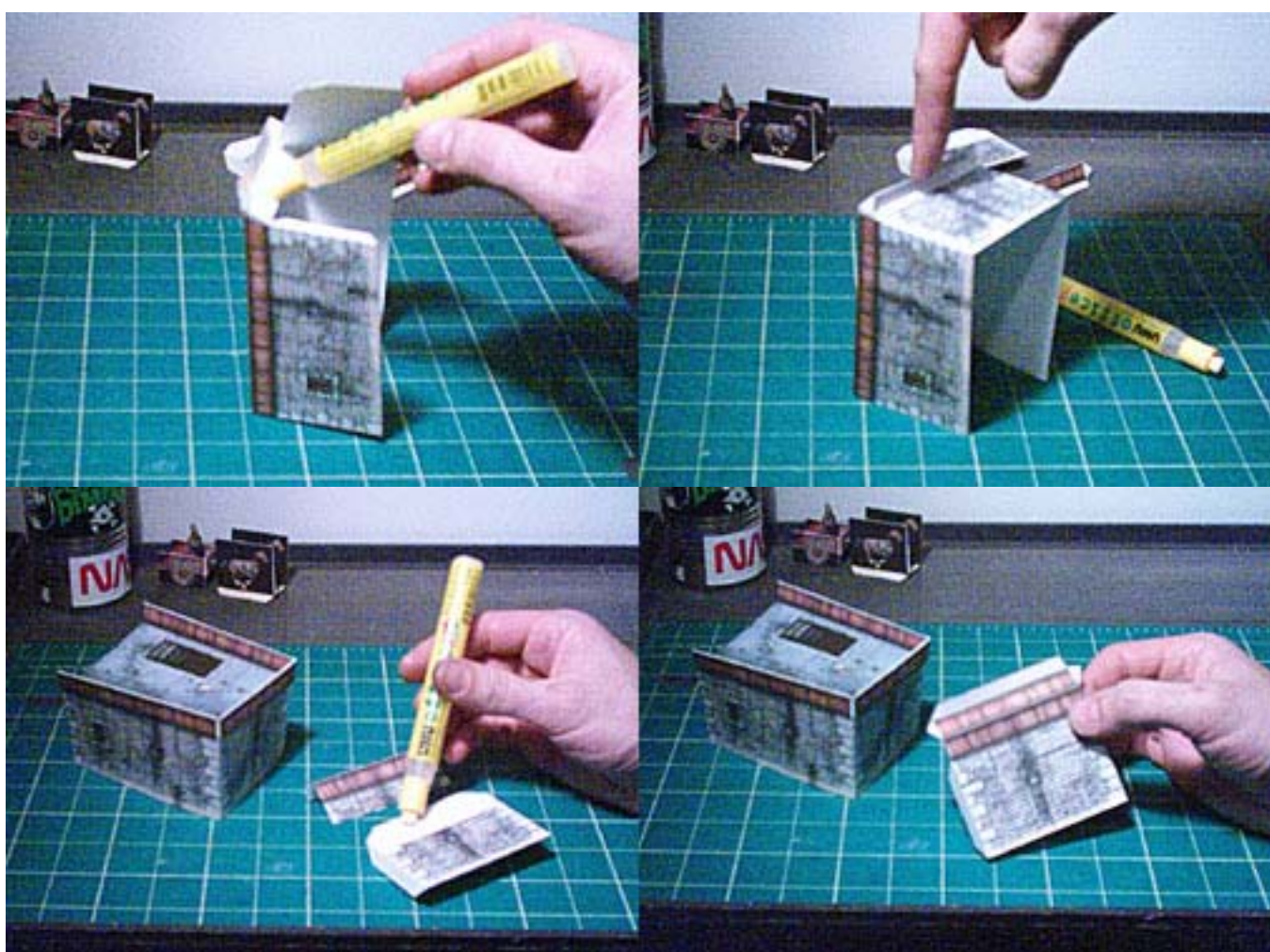
STEP 1:

Cut and score as shown being careful of the reverse fold marks. Apply glue to the underside of the railings on the long axis; do not apply glue to the very ends for now. Fold over the railings and stand up as shown.



STEP 2:

Apply an even coat of glue to the underside of the remaining railing and the tab on the wall. Fold the railing over and tuck the little triangular flaps into the railings on either side. Press hard. Apply glue to the loose wall piece and press the railing piece onto it as shown. Glue the underside of the railing and fold it over.



STEP 3:

Apply glue to all the tabs on the loose wall. Slot it onto the open side as shown, tucking the triangular tabs into the railings. Hold until dry.

