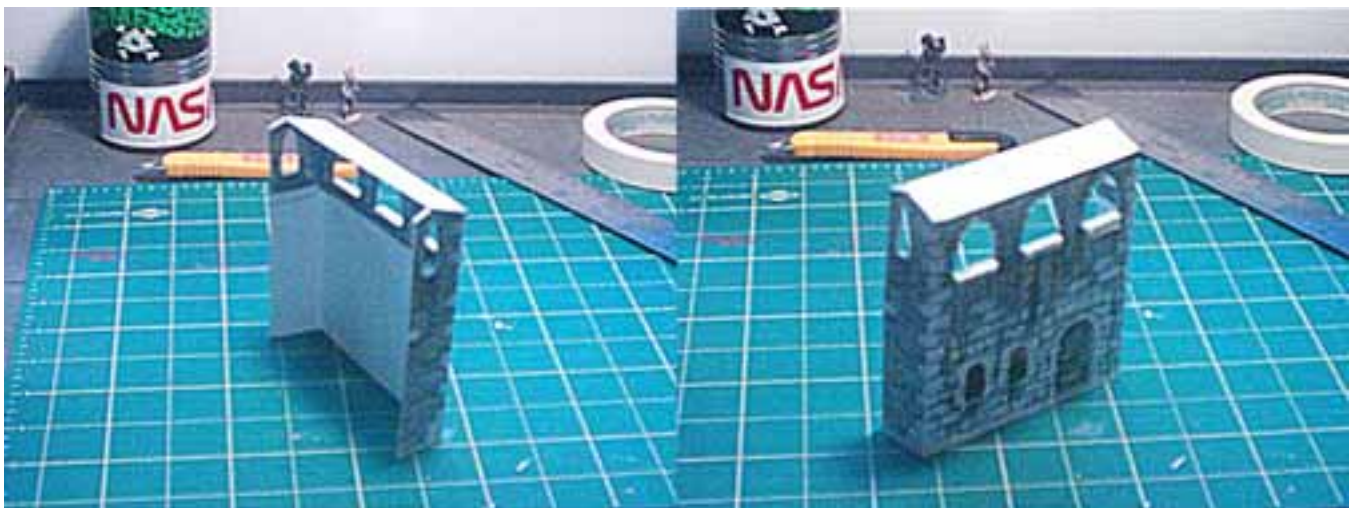


WORLDWORKS GAMES
ArenaWorks™

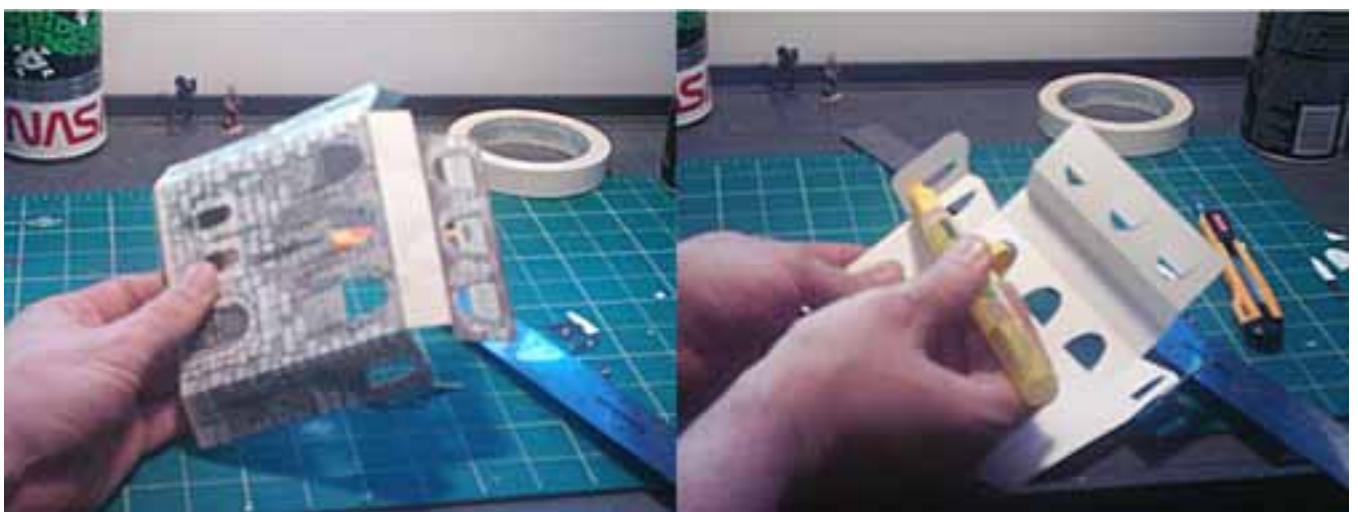
MODEL TYPE:	TERRACE-BACKS
DIFFICULTY:	3 out of 5 - Sills
APPROX BUILD TIME:	Quick - 5 to 10 minutes <i>(Time may vary depending on skill level)</i>
DUPLICATIONS (Suggested):	6 to 8 copies, as many as you have fronts
EDGING COLOR:	Grey or Black felt <i>(What is "Edging"?) Please refer to the included "Beginners Guide".</i>



The "Plain", "Food Vendor" and "Bet Window" backs are all essentially the same. Shown above is the Bet Window. More backs are the "Low" back and "House" back. Collect 'em all!

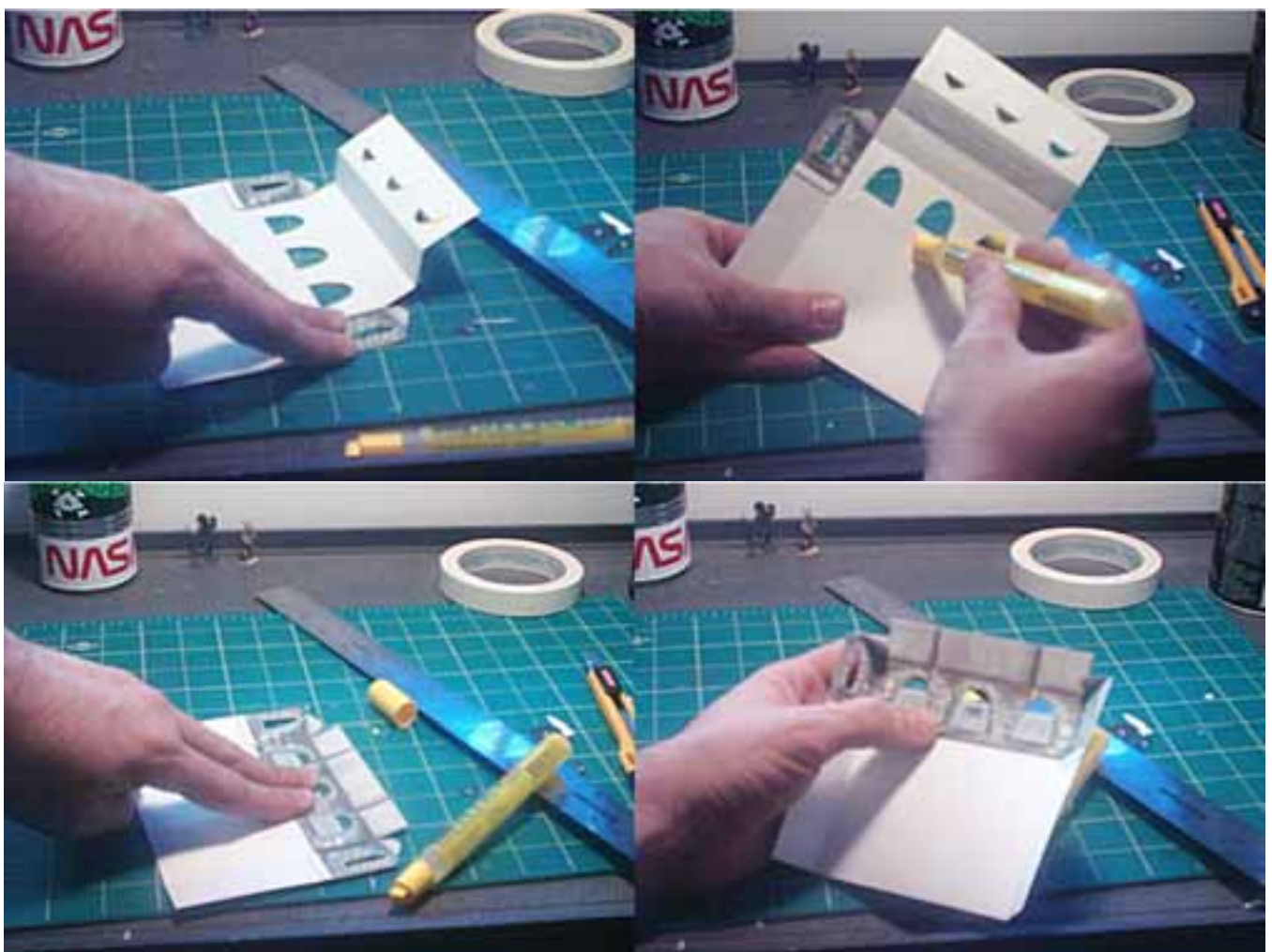
STEP 1:

Cut and score your model as noted paying close attention to areas marked with reverse side scoring arrows. Cut out the windows, decide now if you want to have sills on your windows. If not cut the window flush with the bottom. Fold the "ears" down, glue and press firmly.



STEP 2:

Fold the canvas canopy over the top and glue the inside wall down.



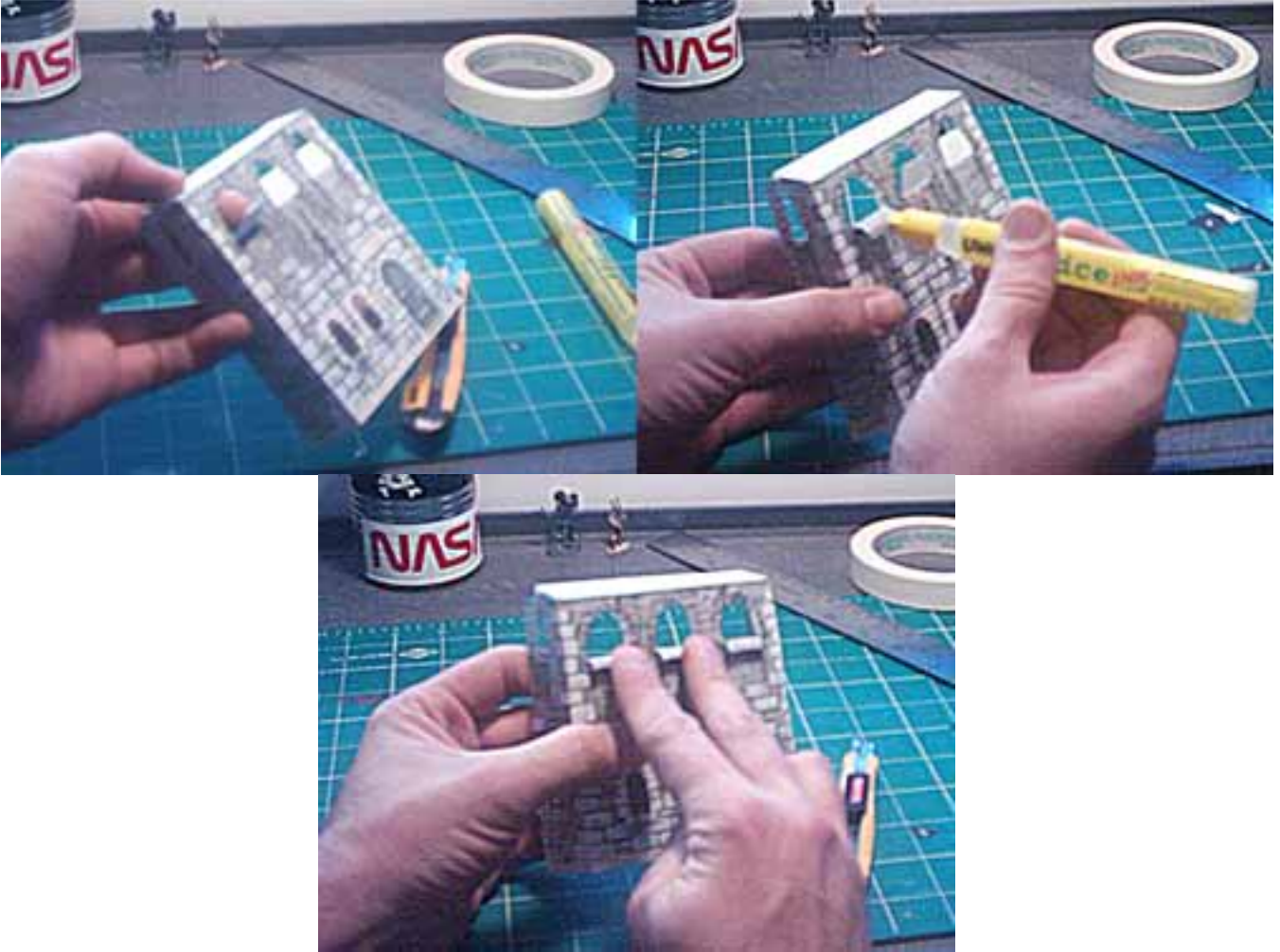
STEP 3:

Align the windows and set the canopy atop the side tabs.



STEP 4:

To make the windowsills fold the scored sill sections over and lightly glue the end segment. Roll it into a box and hold the end segment against the wall until it sticks.



STEP 5:

Time to mate your chosen front and back. Glue the tabs on the back of the front, and the inside of the back, spread the glue all the way to the top, under the small side windows. Slide the front and back together and press tightly.

