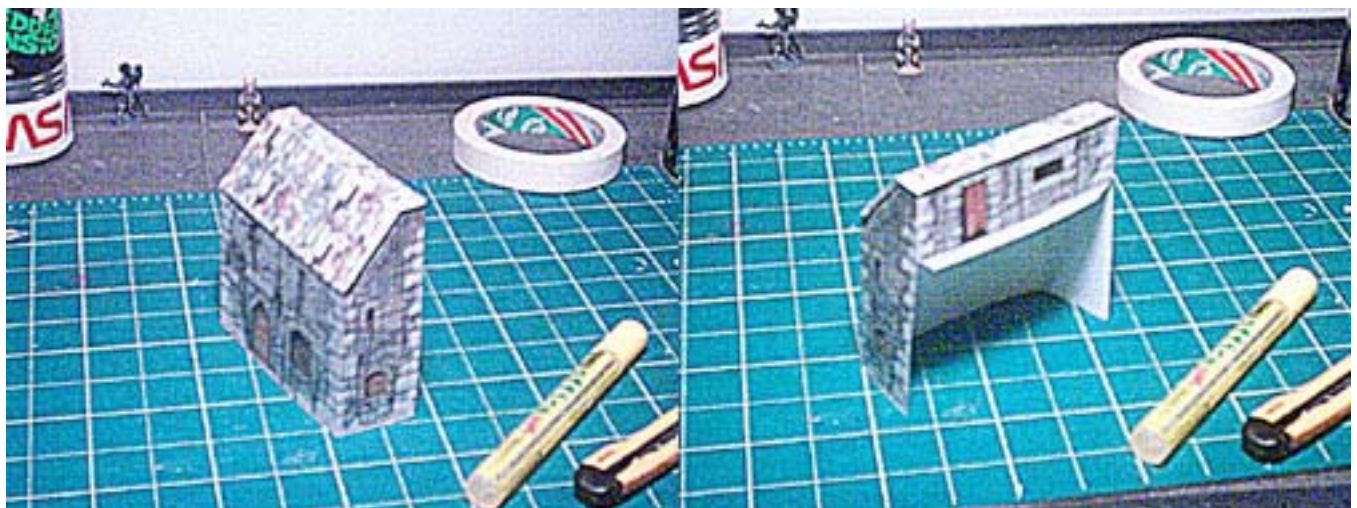


WORLDWORKS GAMES

# ArenaWorks™

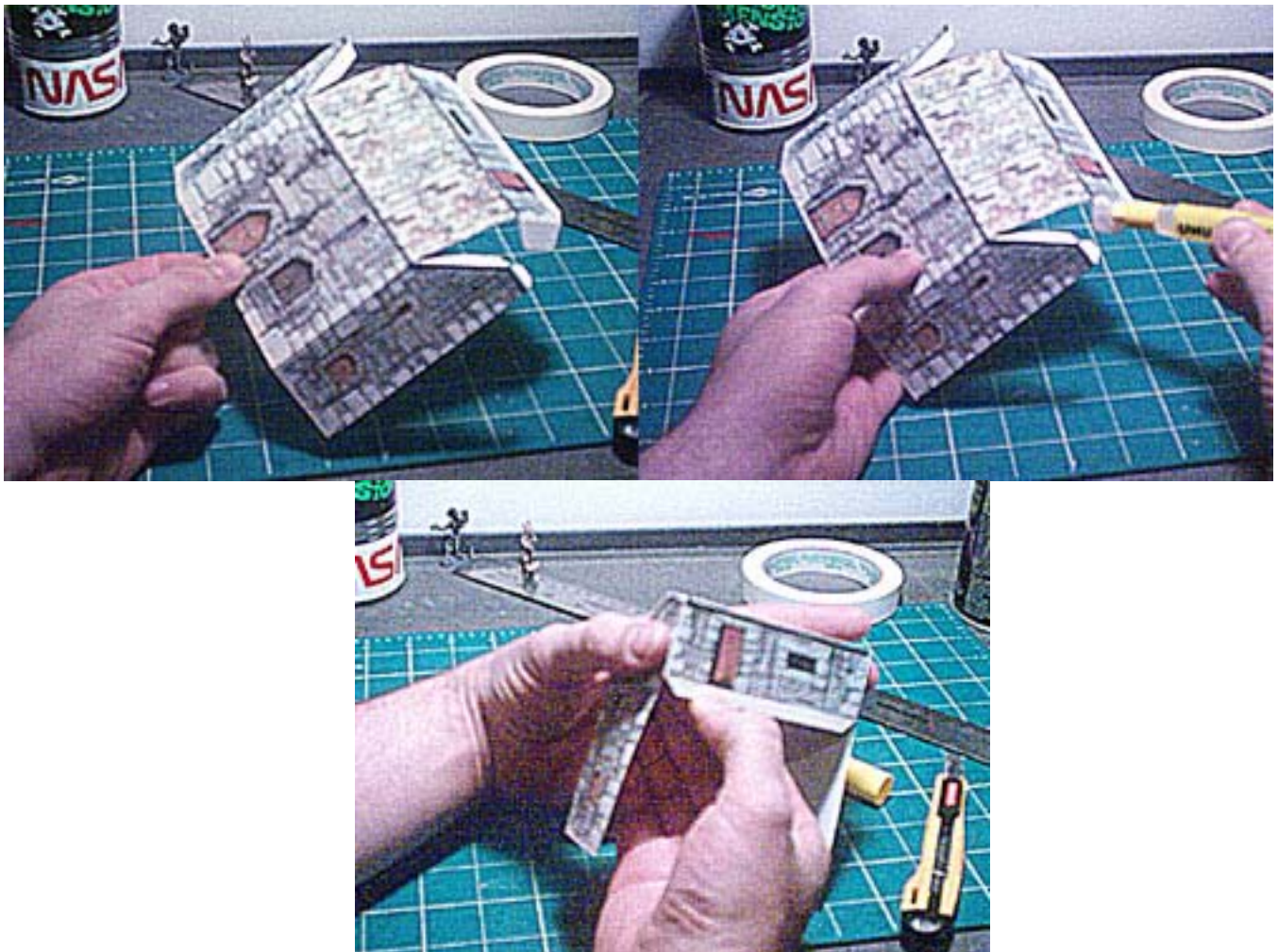
<b>MODEL TYPE:</b>	<b>TERRACE BACK-HOUSE</b>
<b>DIFFICULTY:</b>	<b>2 out of 5</b>
<b>APPROX BUILD TIME:</b>	Quick - 5 to 10 minutes <i>(Time may vary depending on skill level)</i>
<b>DUPLICATIONS (Suggested):</b>	<b>1 to 2 copies (optimal)</b>
<b>EDGING COLOR:</b>	<b>Grey or Black felt</b> <i>(What is "Edging"?) Please refer to the included "Beginners Guide".</i>

Here's an alternate back for the Terraces, with textures for a dojo-like place.



**STEP 1:**

Cut and Score your models as noted. Glue all the tabs save the one under the door. Fold the top over and press firmly.



**Joining Front and House Back**

**STEP 1:**

Glue all tabs. You don't have to score the two end tabs of the front of the terrace if you use this back. Slide front and back together and press hard. Reach up inside to get a tight seal below the door on top.

