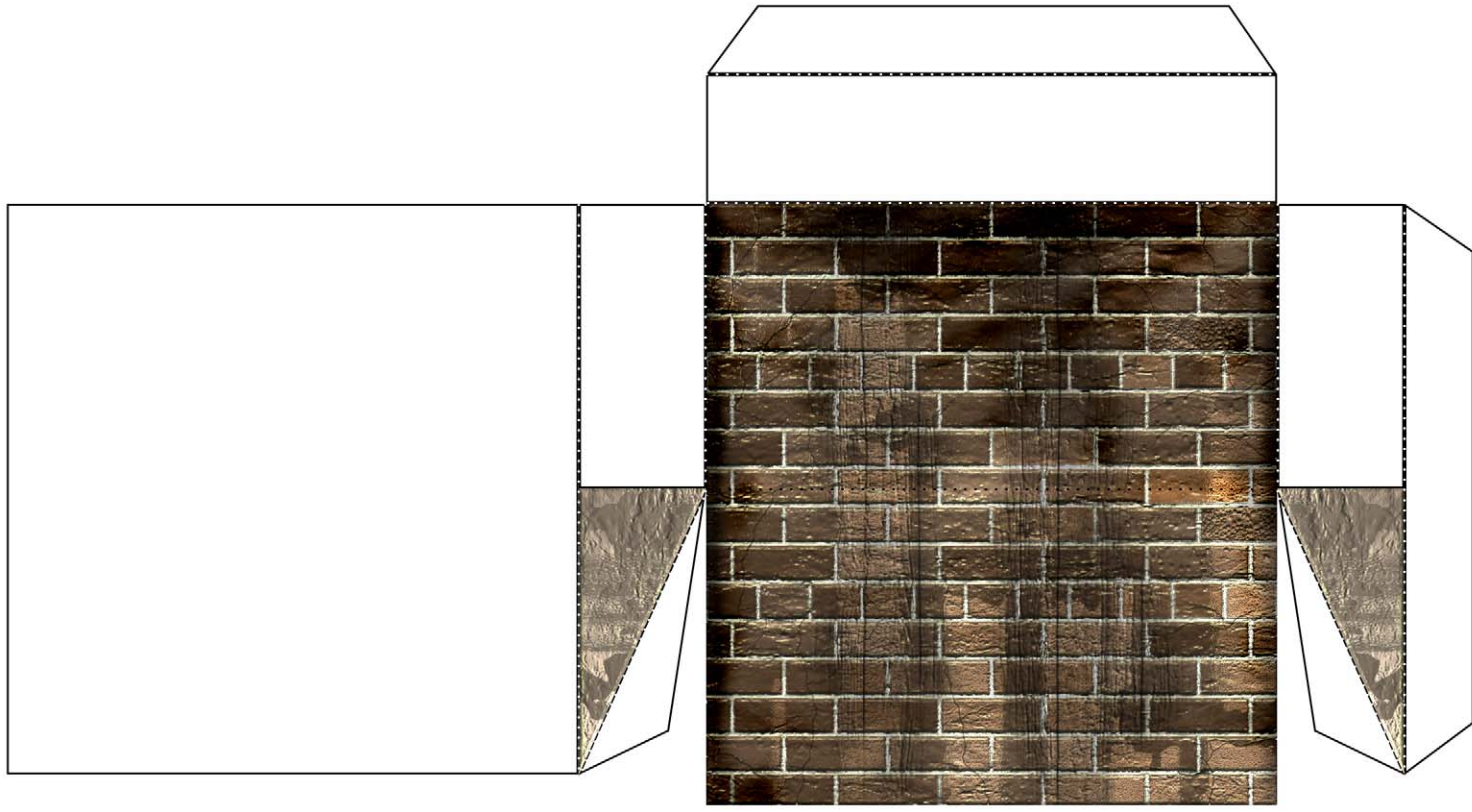
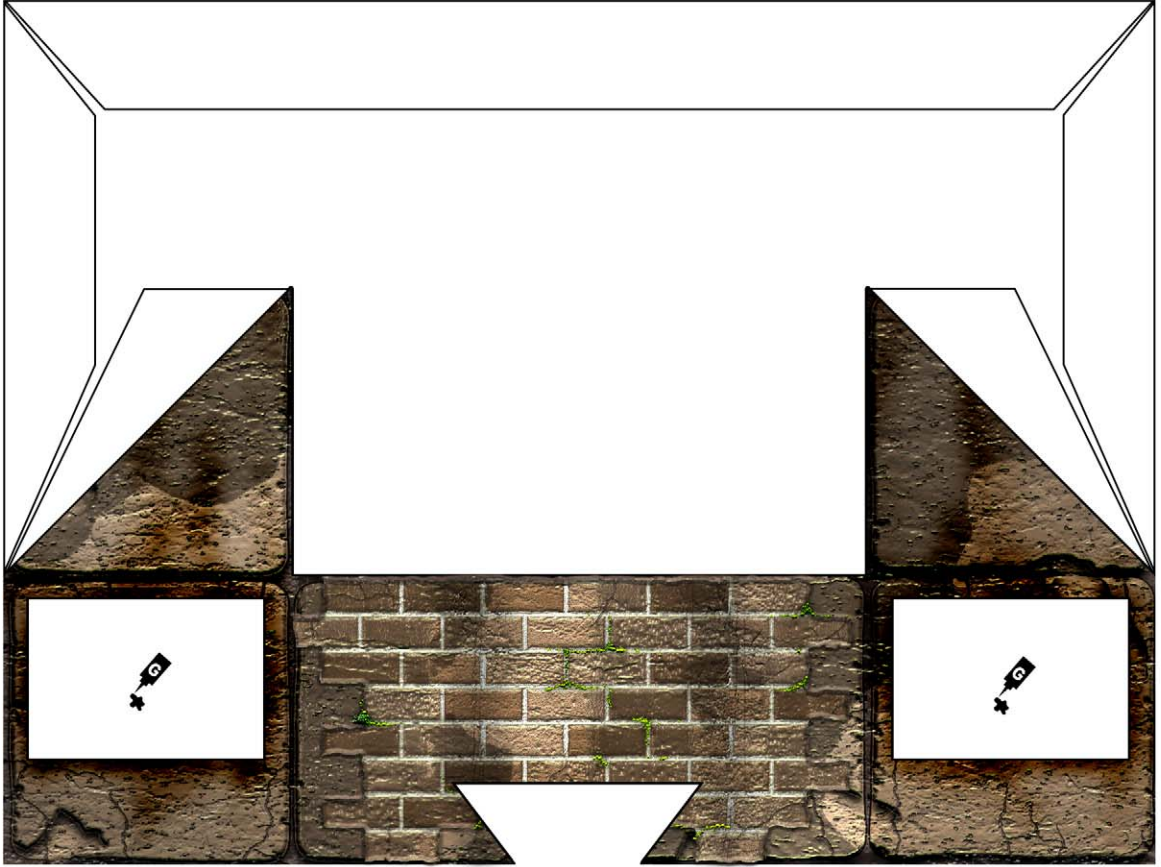
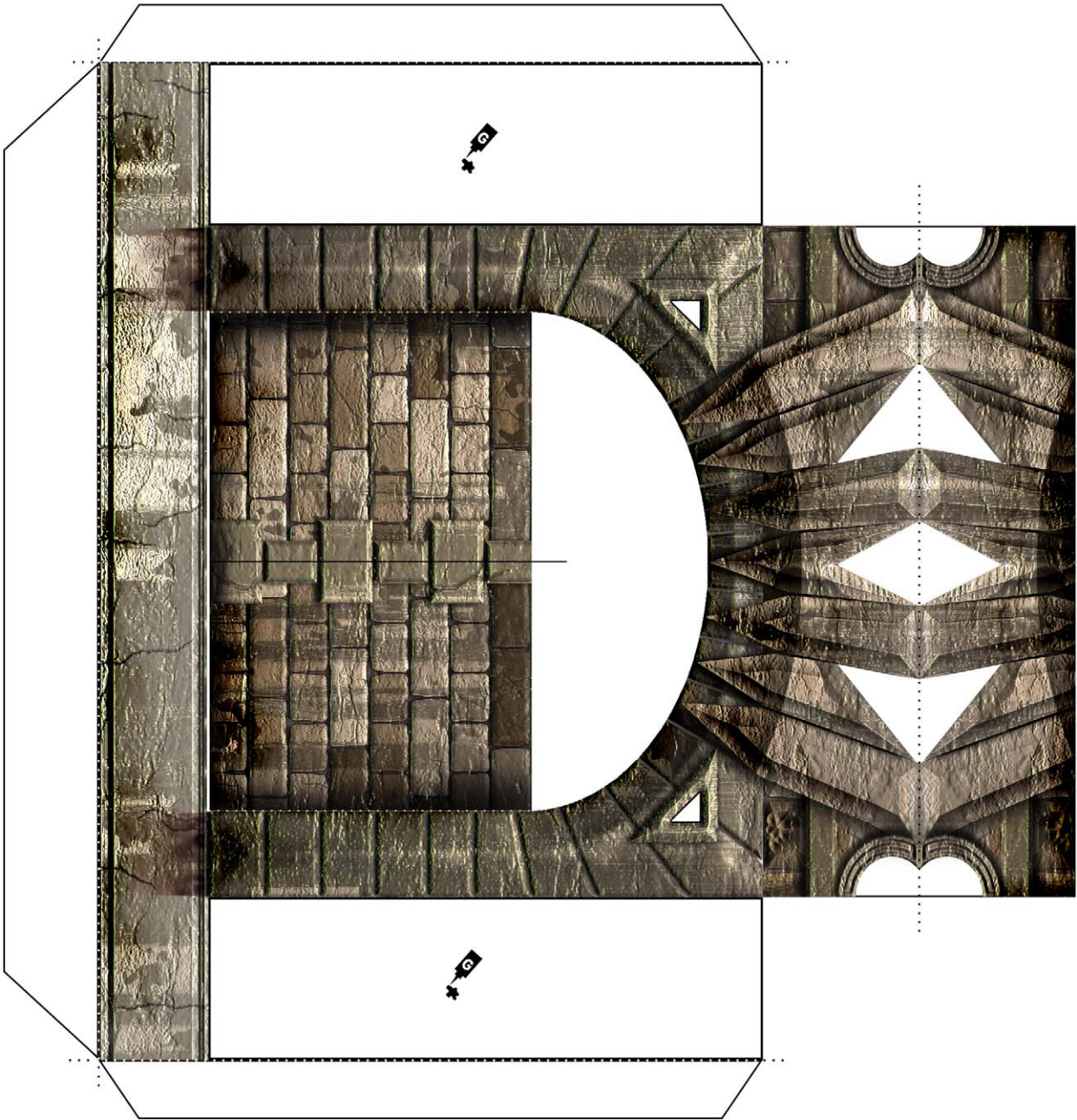


G Atchouse base





ATEHOUSE FRONT WALL



 Cut through Black lines or borders

.....
Score and fold along dotted lines

 Score and fold on reverse side

 Area intended for gluing

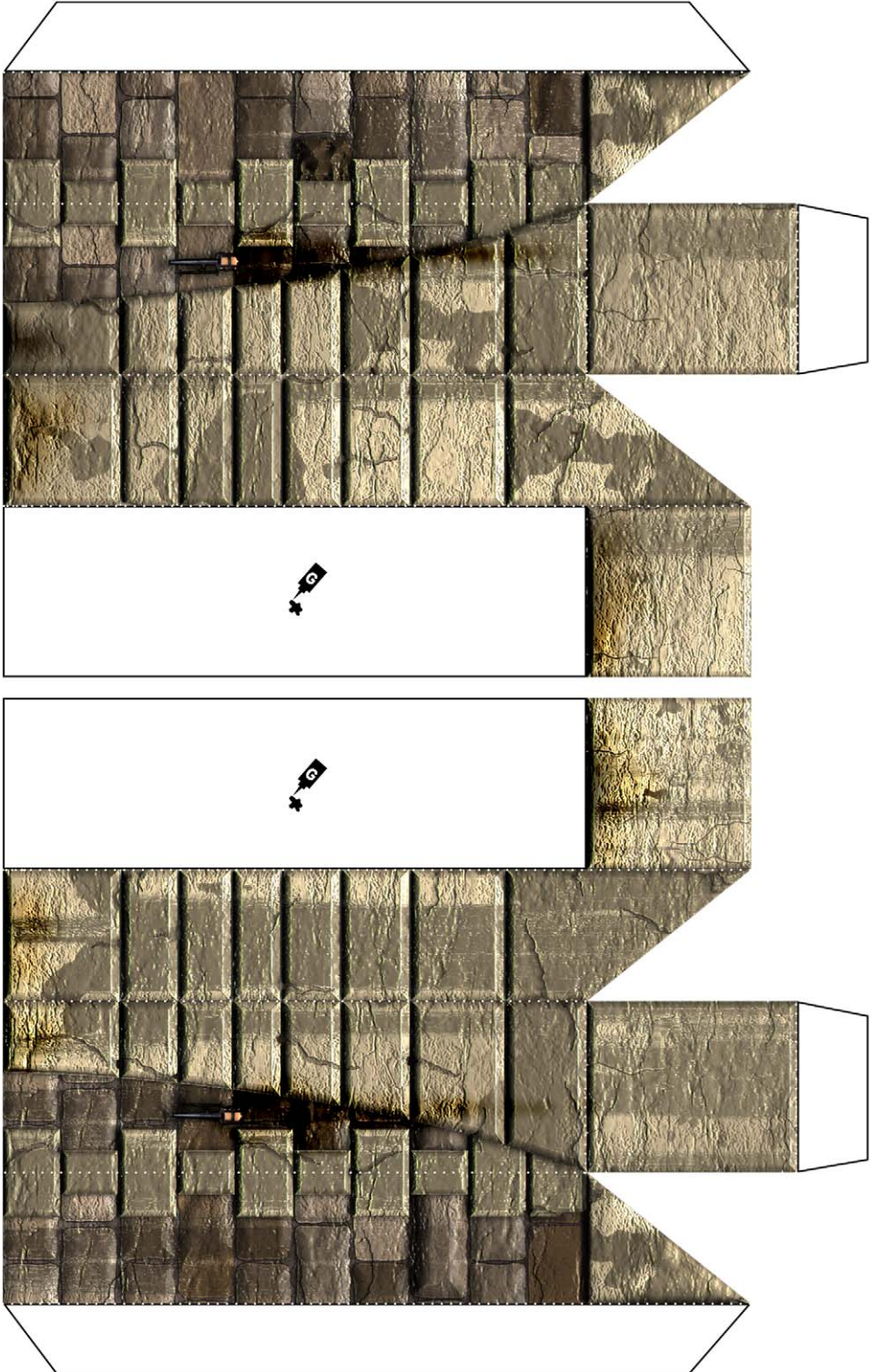
Visit <http://www.worldworksgames.com> for more models, video tutorials, help forums and MORE!

©copyright WorldWorksGames 2004





ATEHOUSE FRONT COLUMNS



 Cut through Black lines or borders

.....
Score and fold along dotted lines


 Score and fold on reverse side

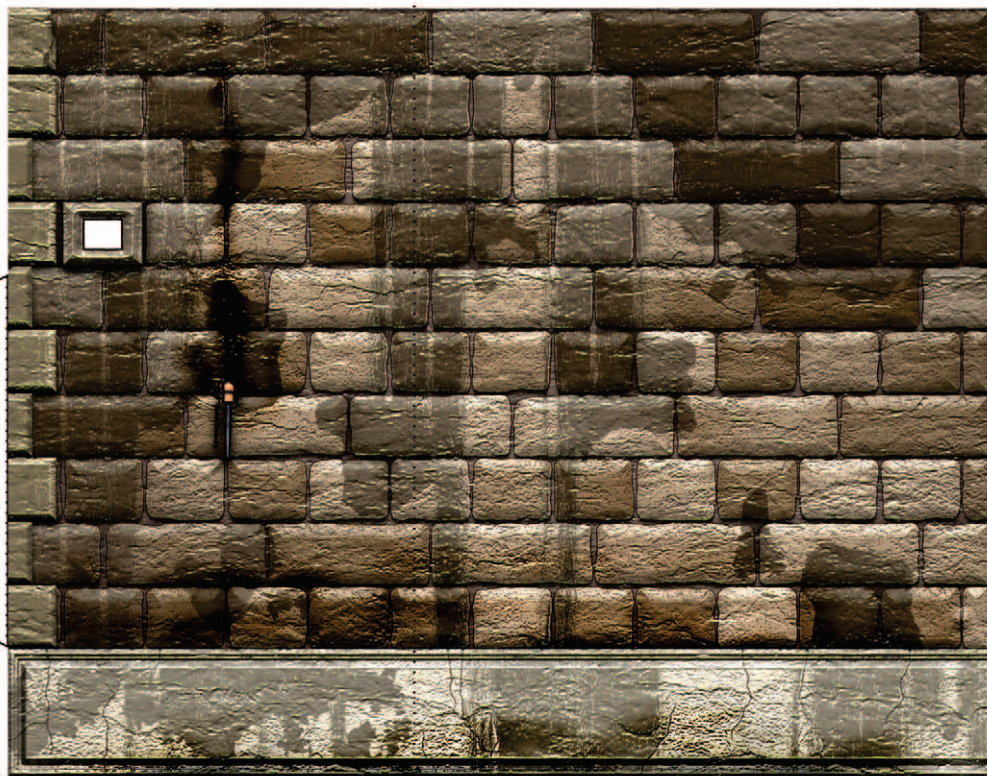
 Area intended for gluing

Visit <http://www.worldworksgames.com> for more models, video tutorials, help forums and MORE!

©copyright WorldWorksGames 2004

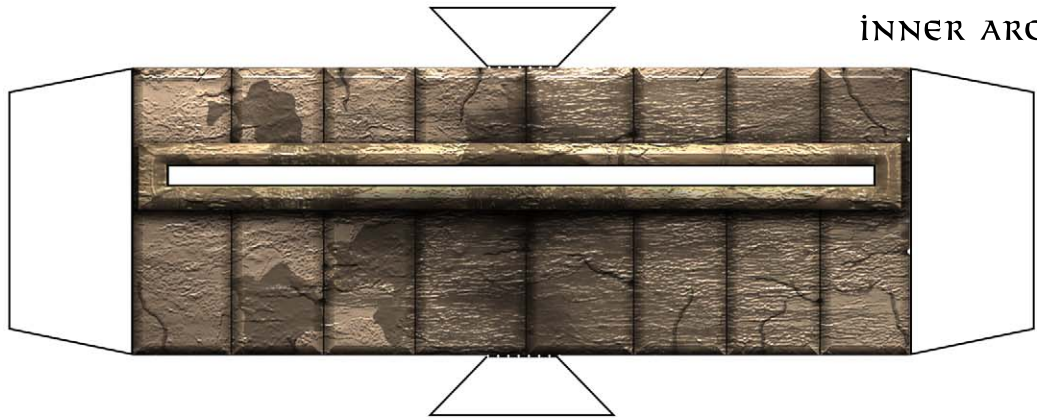


 Atehouse inside walls



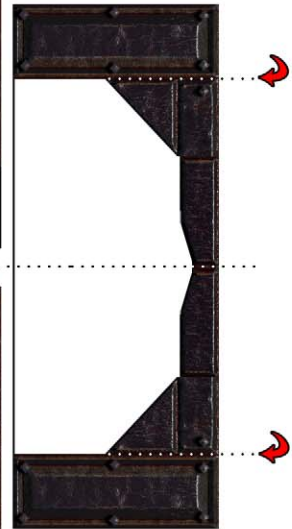
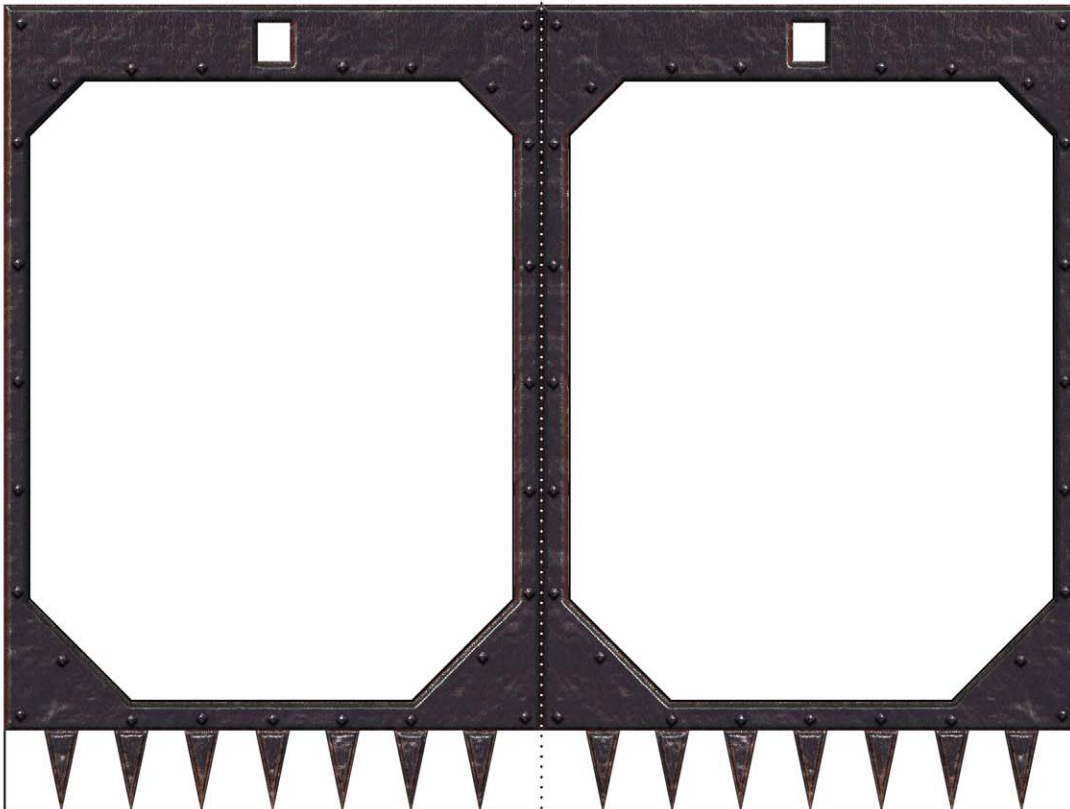
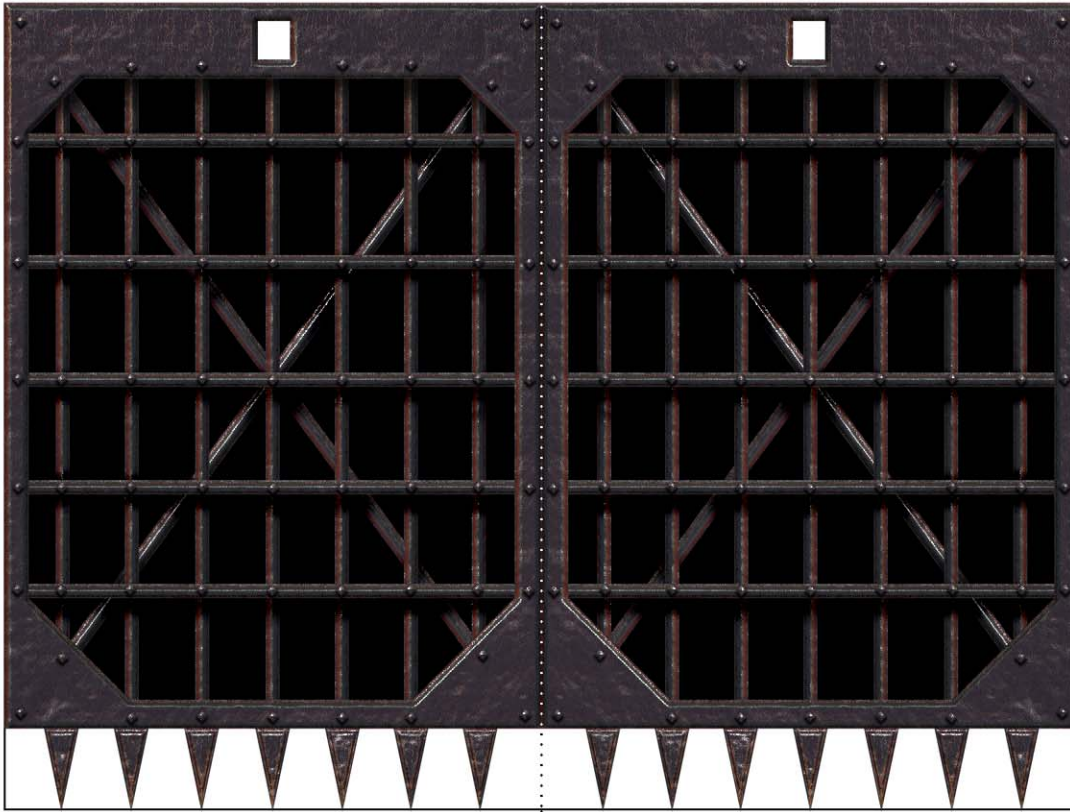


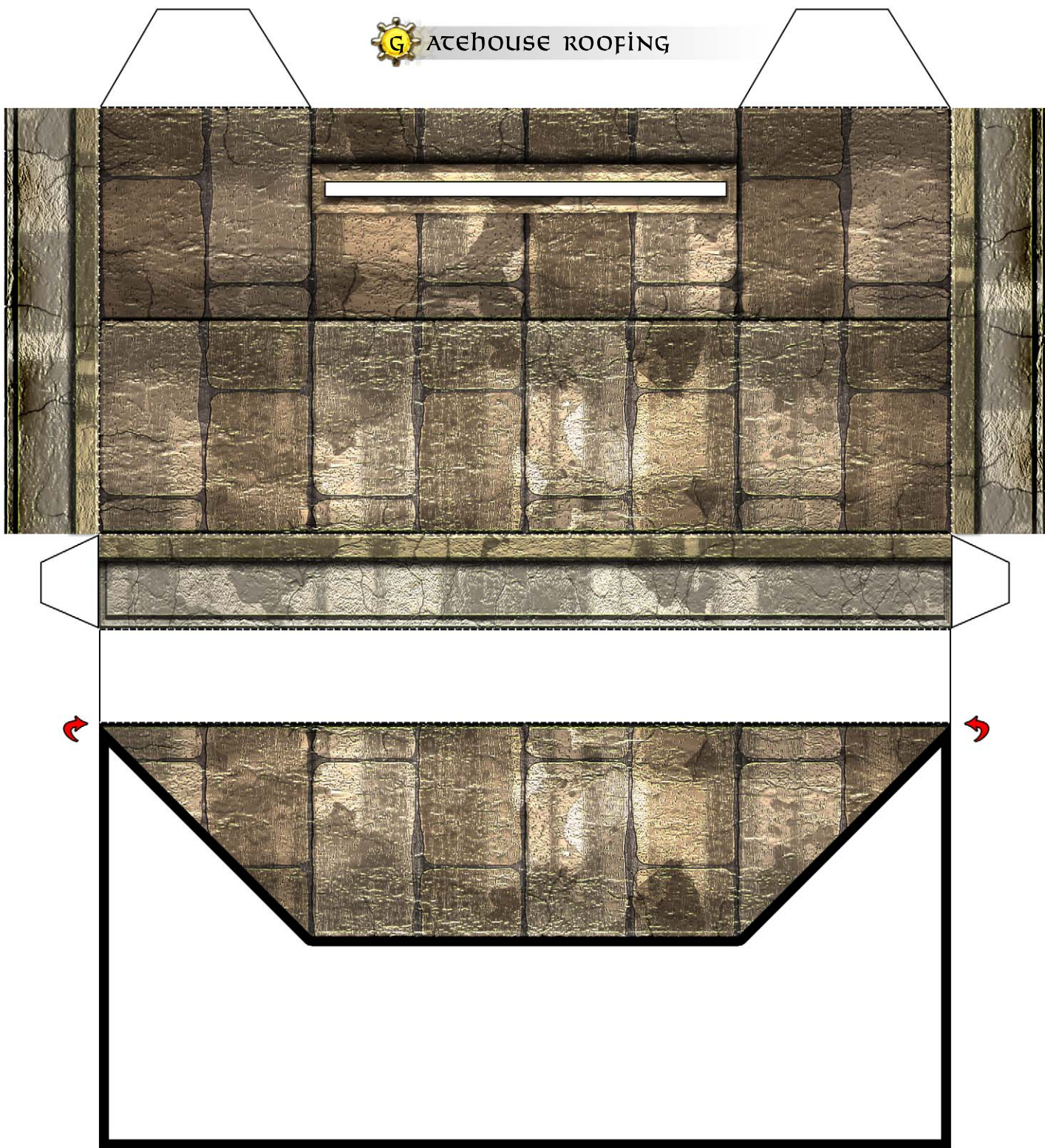
Gatehouse elements





Gatehouse GATES





 Cut through Black lines or borders

 Score and fold along dotted lines

 Score and fold on reverse side

 Area intended for gluing

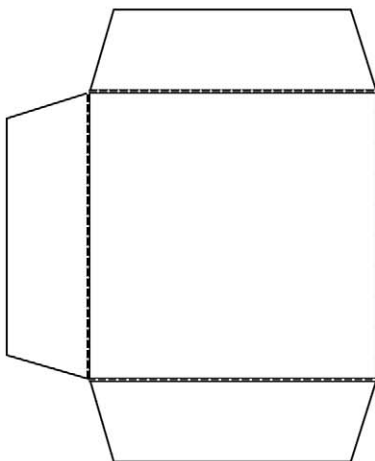
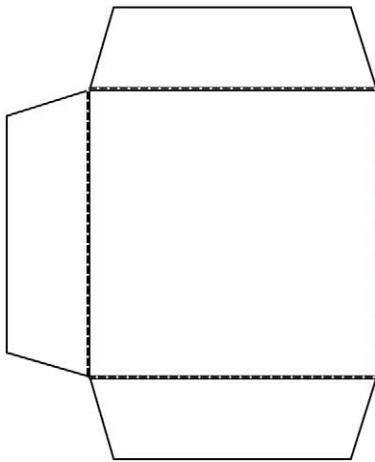


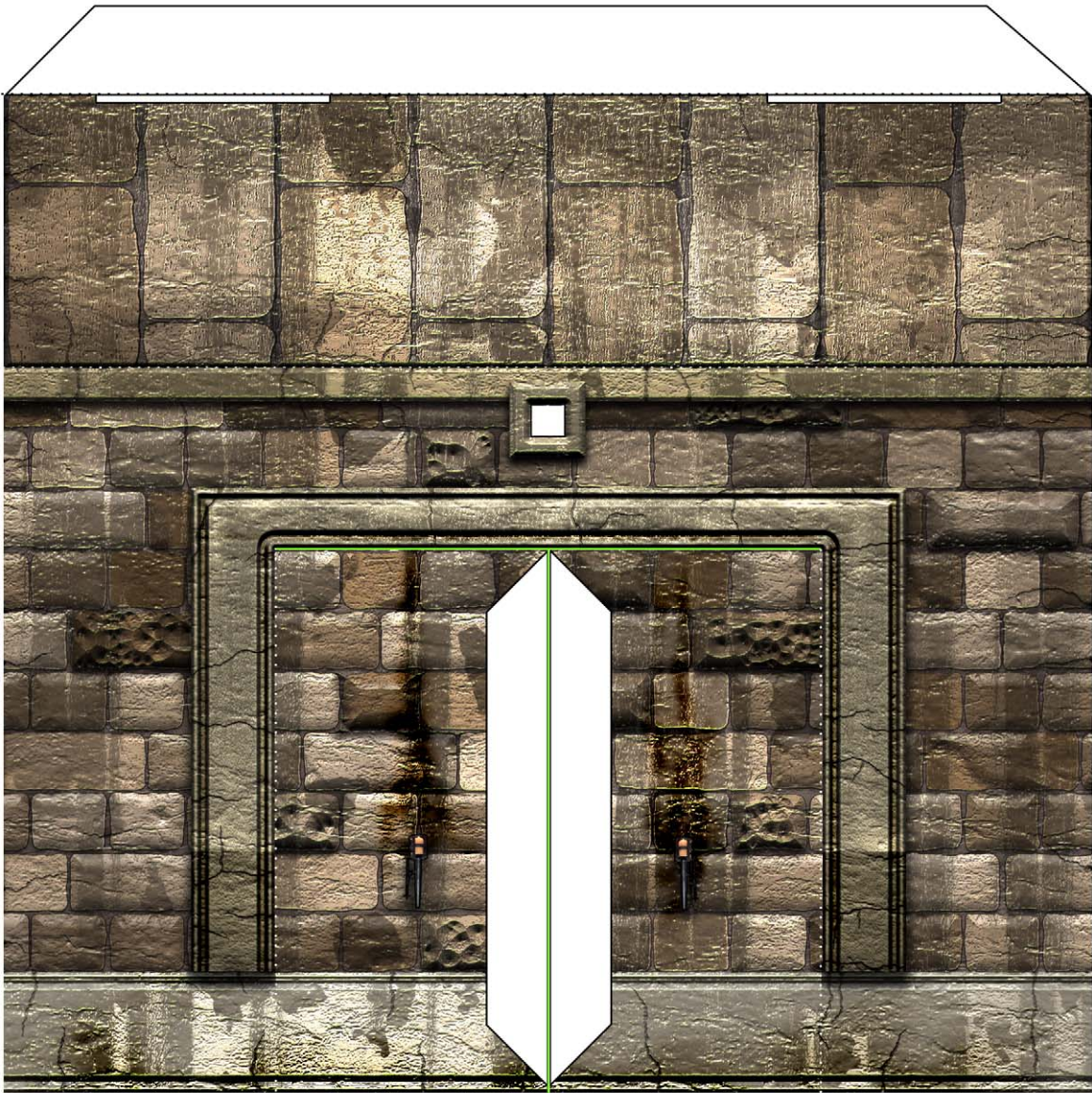
Visit <http://www.worldworksgames.com> for more models, video tutorials, help forums and MORE!

©copyright WorldWorksGames 2004



PPER WALL NO.1





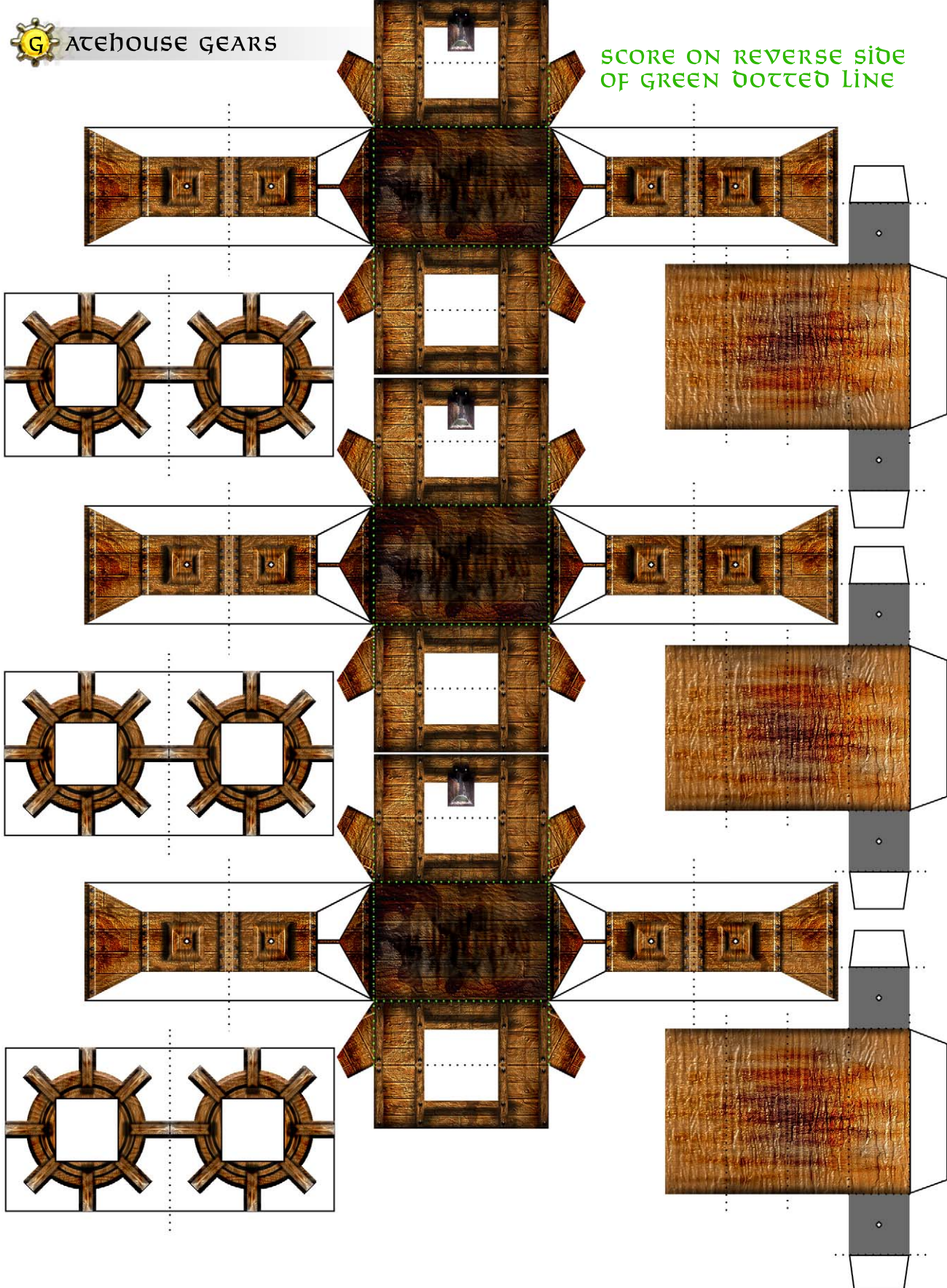
CUT THROUGH
GREEN LINES





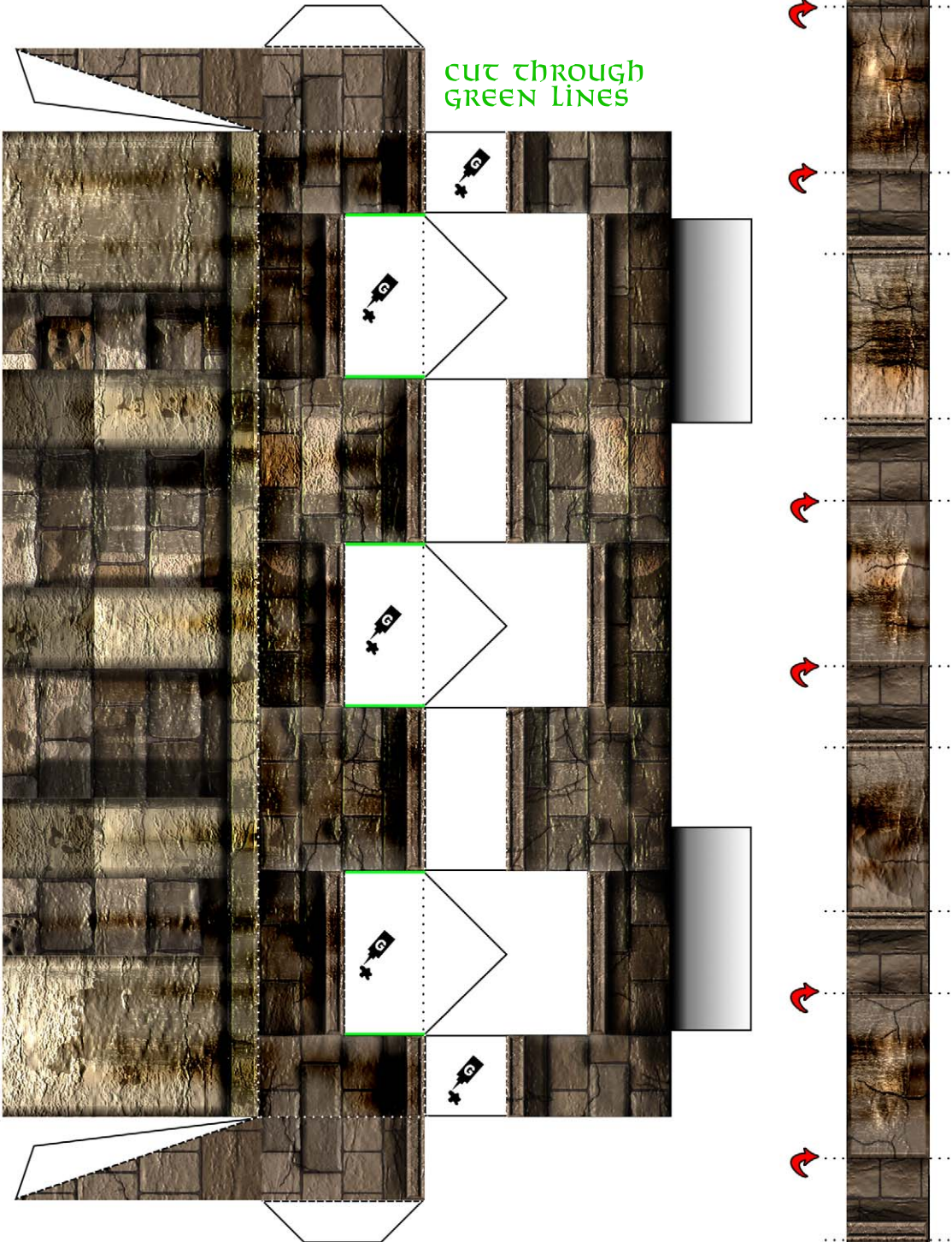
Warehouse Gears

SCORE ON REVERSE SIDE
OF GREEN DOTTED LINE





ATEHOUSE CRENELATION



CUT THROUGH GREEN LINES



Cut through Black lines or borders

Score and fold along dotted lines

Score and fold on reverse side

Area intended for gluing



Visit <http://www.worldworksgames.com> for more models, video tutorials, help forums and MORE!

©copyright WorldWorksGames 2004