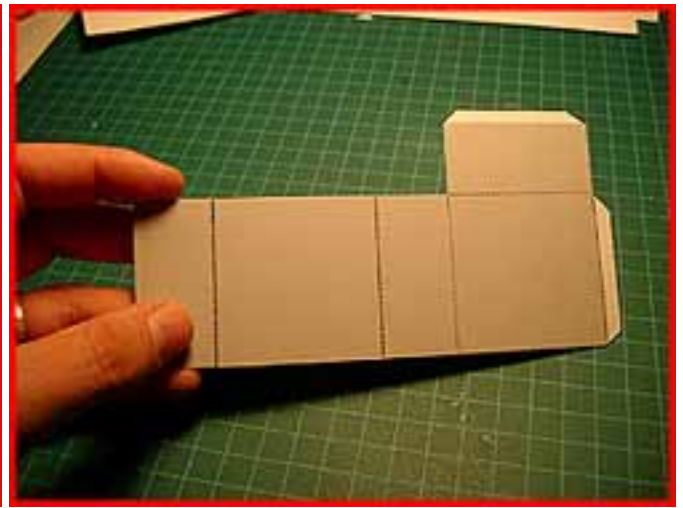
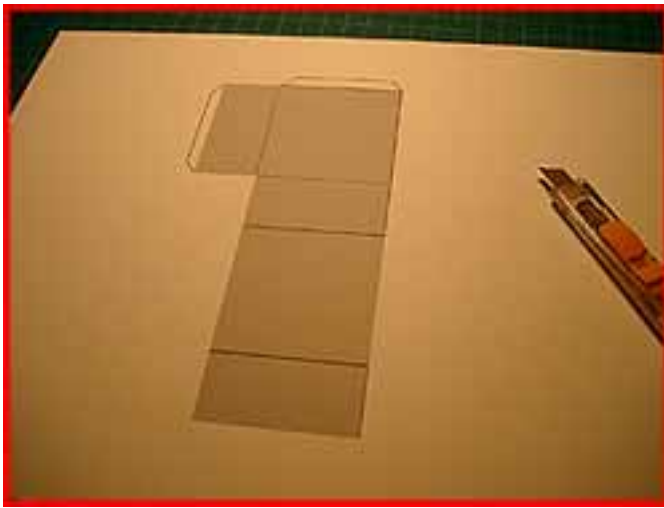




## "Bed and Dresser"

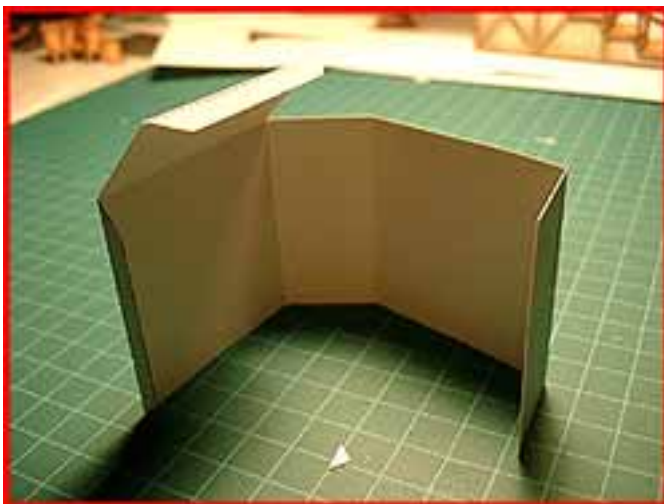
### Dresser

- The dresser follows a common fold called the "box fold". Score and cutout the model where noted.



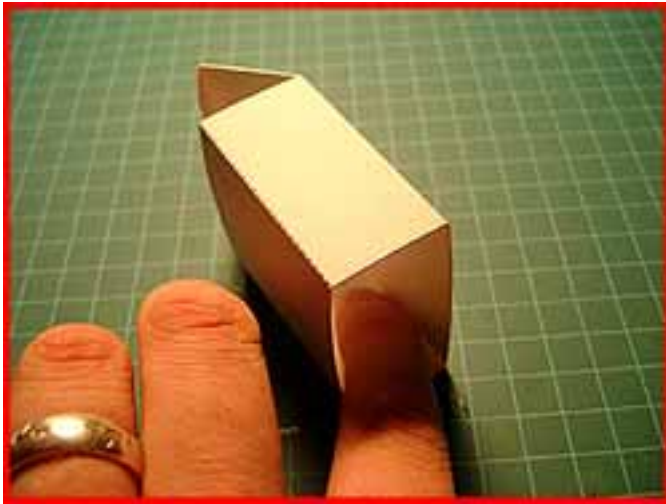
### STEP 2

- Fold the model as shown below. Apply a thin but even bead of glue on the wall side glue tab.



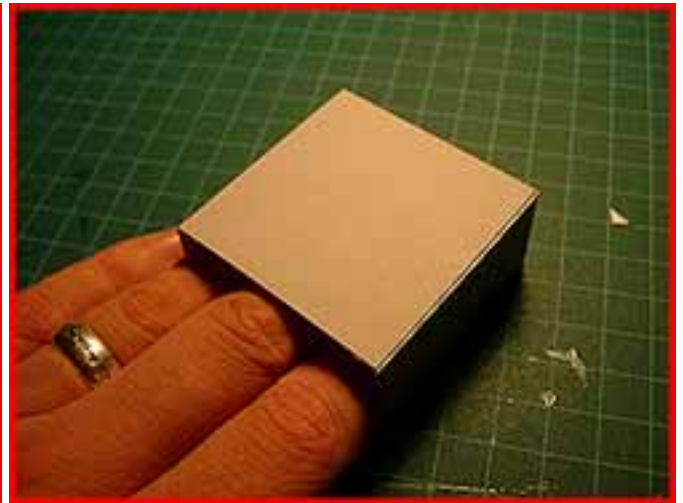
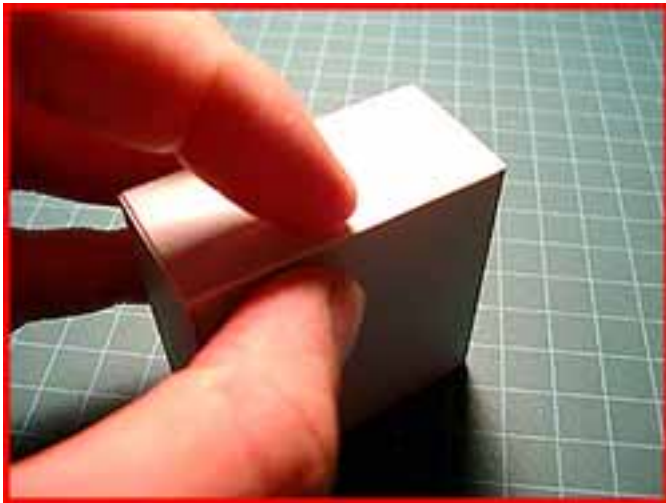
### STEP 3

By lying the model down you can achieve even pressure across the length of the glue tab. The tables hard surface ensures even glue distribution and tack while applying pressure to the tab. This technique should be used whenever possible with all models. If the model is too skinny to reach your fingers into use a ruler or pencil to apply pressure. Stand the model up. Apply a bead of glue to the remaining top fold.



## STEP 4

Apply some light pressure to the outside of the top glue tab and move the tab into position flush with the wall. Once you have the proper position, place the model on its back and apply pressure to the tab from the inside of the model. Once again, if the model is too narrow to reach your fingers into use a ruler or pencil to apply pressure. That's it!



## The Bed



- Cut, score and fold the bed as noted. Be careful to reverse side score the bed at the foot and head end of the bed.
- Sandwich glue the headboard together. Sandwich glue the footboard together
- Bring in the bedsides and glue the tabs to the inside of the head and footer.
- Once the model has had time to dry you may opt to remove the black areas for greater visual impact and realism.