
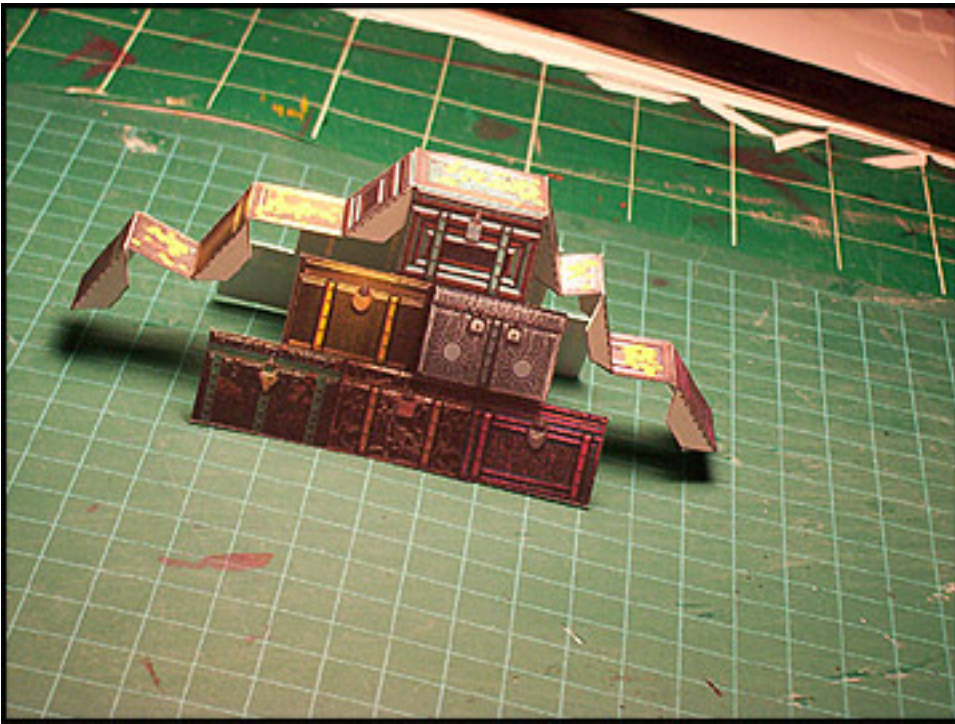




Model:	Treasure
Difficulty:	Moderate
Build Time:	10 mins
Duplications:	1 or 2

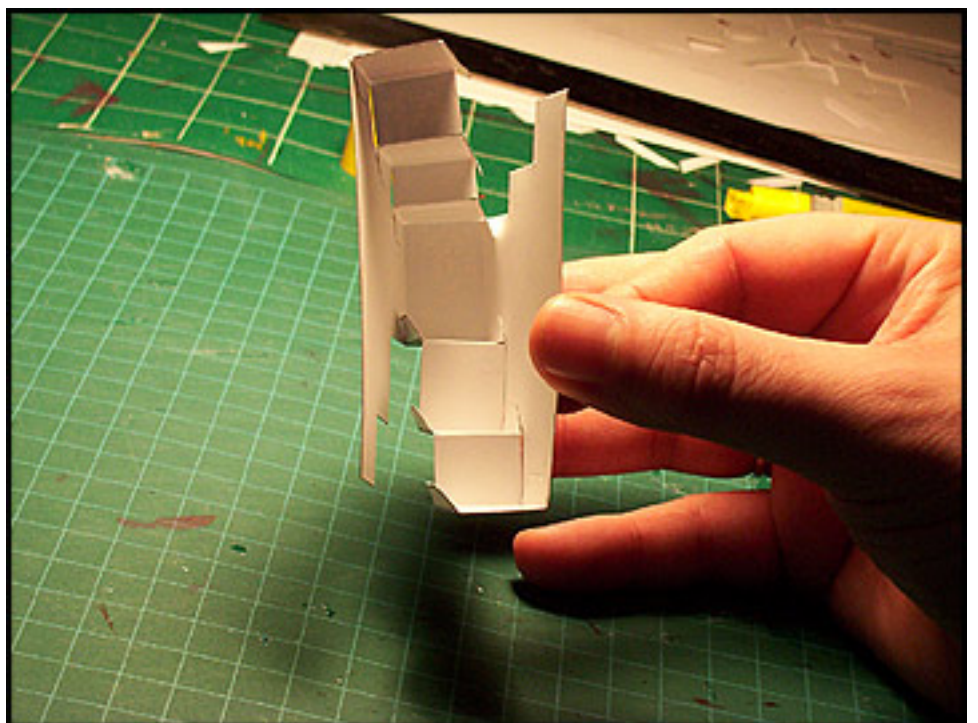


 Pirating **KILLS** small businesses like this one. If you enjoy WorldWorks Products and you want us to continue please support us by **NOT** sharing these files. Please help keep us alive!



Cut, score and fold as noted paying careful attention to areas marked with "Reverse side score" arrows.

- Start by gluing one side of the stairs tabs in place.



- Flip the model over and glue the opposing side in place (see photo)
- Glue the remaining tabs in place.

Once all the tabs are glued in place be sure to edge your model with a black or grey felt.

(What is "Edging"? Please refer to the included "Beginners Guide" or visit [www.worldworksgames.com](http://www.worldworksgames.com) for more resources and video tutorials.)