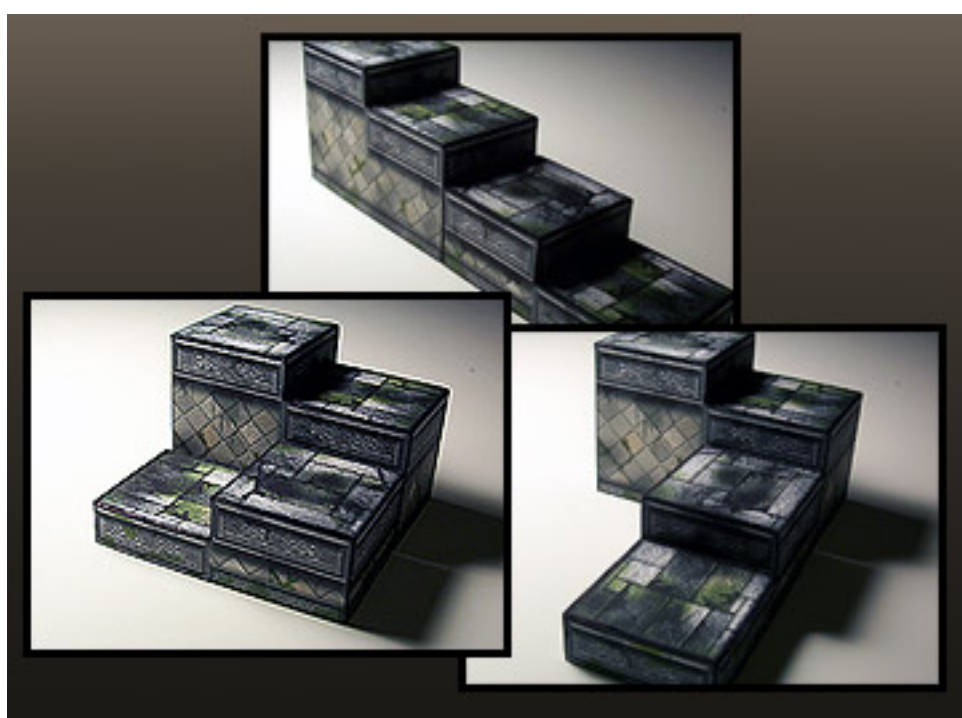

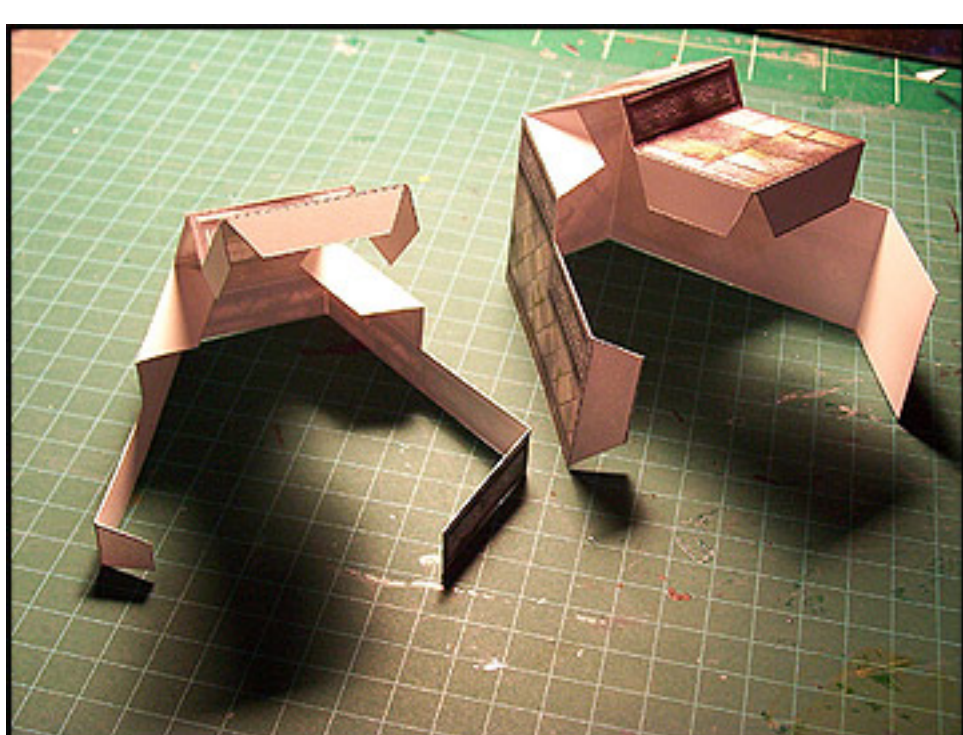


Model:	STAIRS
Difficulty:	Moderate
Build Time:	10 mins
Duplications:	1 or 2

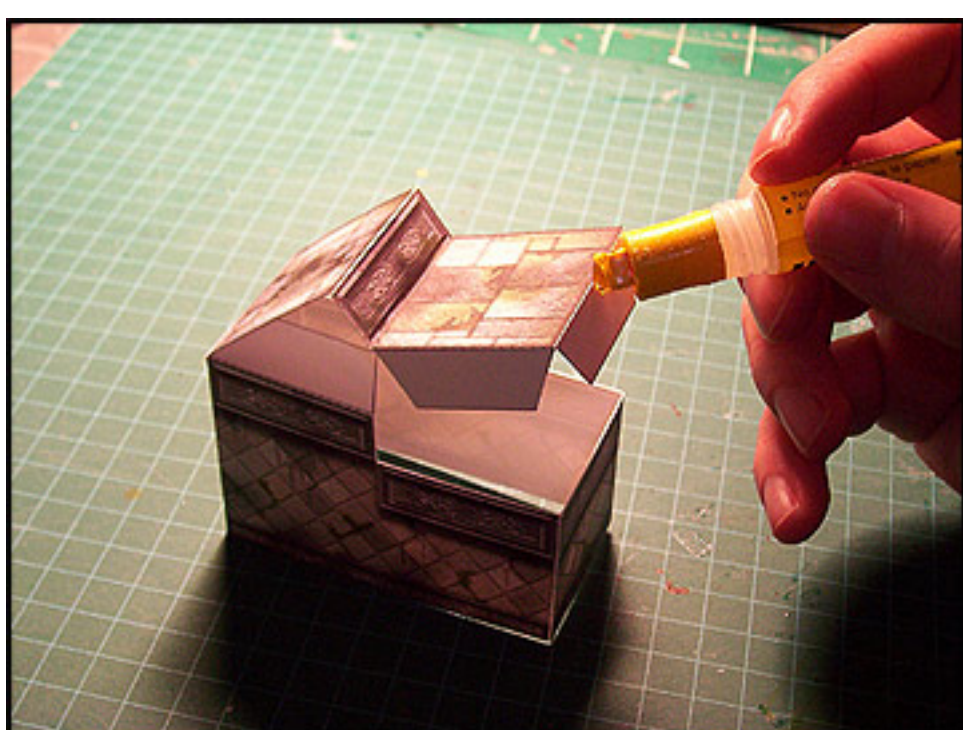
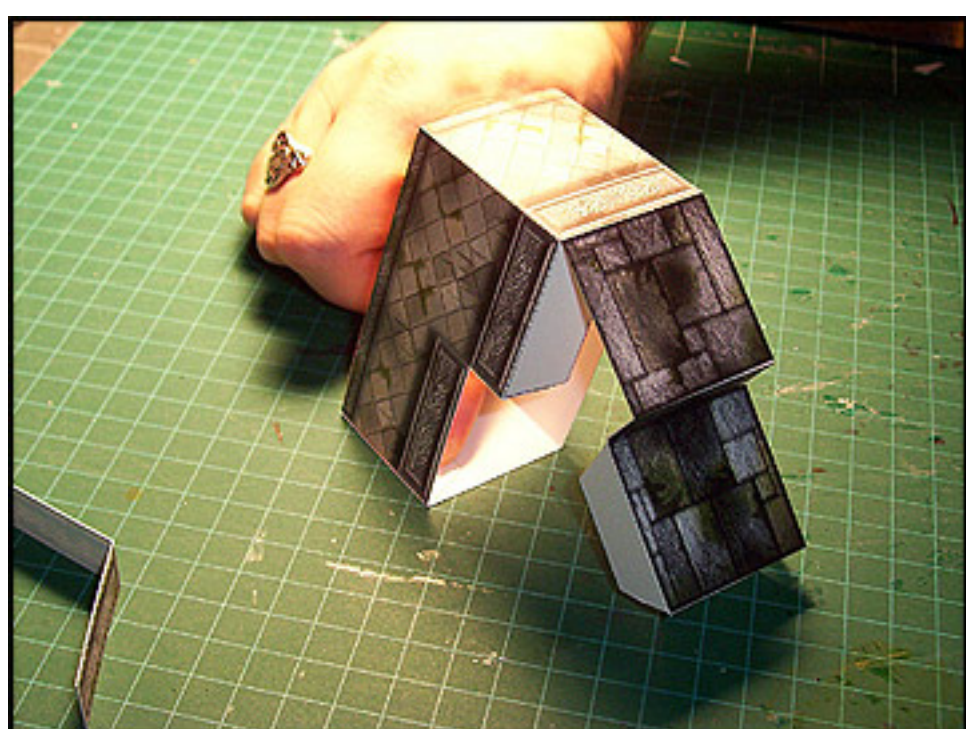


 Pirating **KILLS** small businesses like this one. If you enjoy WorldWorks Products and you want us to continue please support us by **NOT** sharing these files. Please help keep us alive!



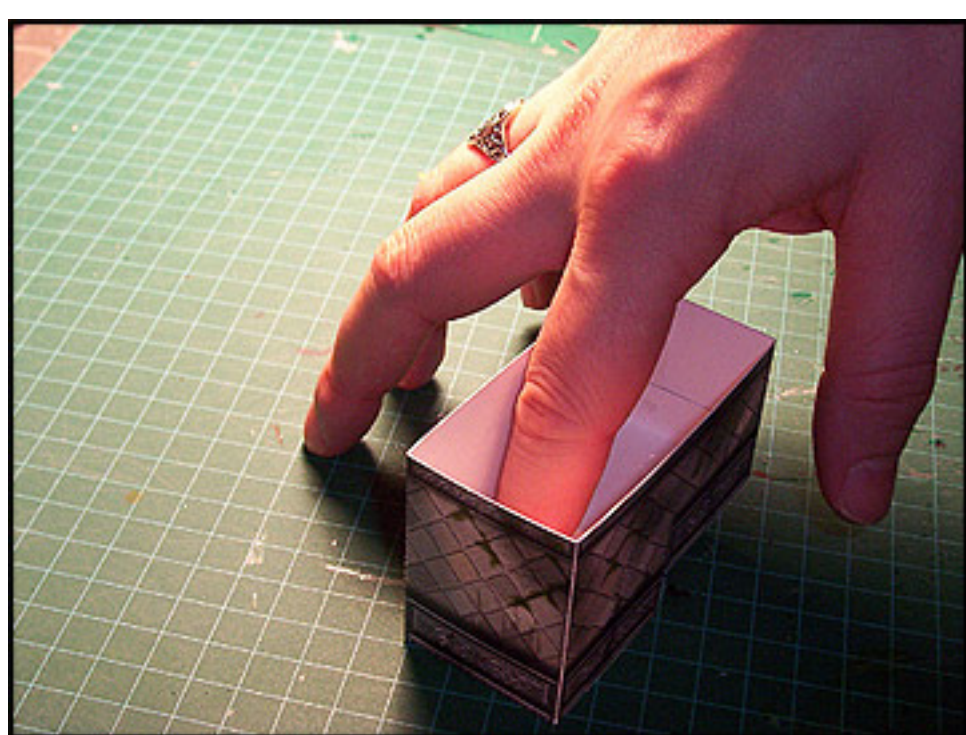
Cut, score and fold as noted paying careful attention to areas marked with "Reverse side score" arrows.

Begin by gluing the base stair glue tab to the other end of the structure. (See photo)



Apply glue to the bottom step glue tab and glue in place. Be careful to insert the remaining tabs inside the structure during this step.

Flip the model over and pull back the remaining tabs gluing them in place one at a time. If you have difficulty bending the tabs back to apply glue use the end of your blade, a pencil or some other long fine tipped object.



Once all the tabs are glued in place be sure to edge your model with a black or grey felt.

(What is "Edging"? Please refer to the included "Beginners Guide" or visit [www.worldworksgames.com](http://www.worldworksgames.com) for more resources and video tutorials.)