
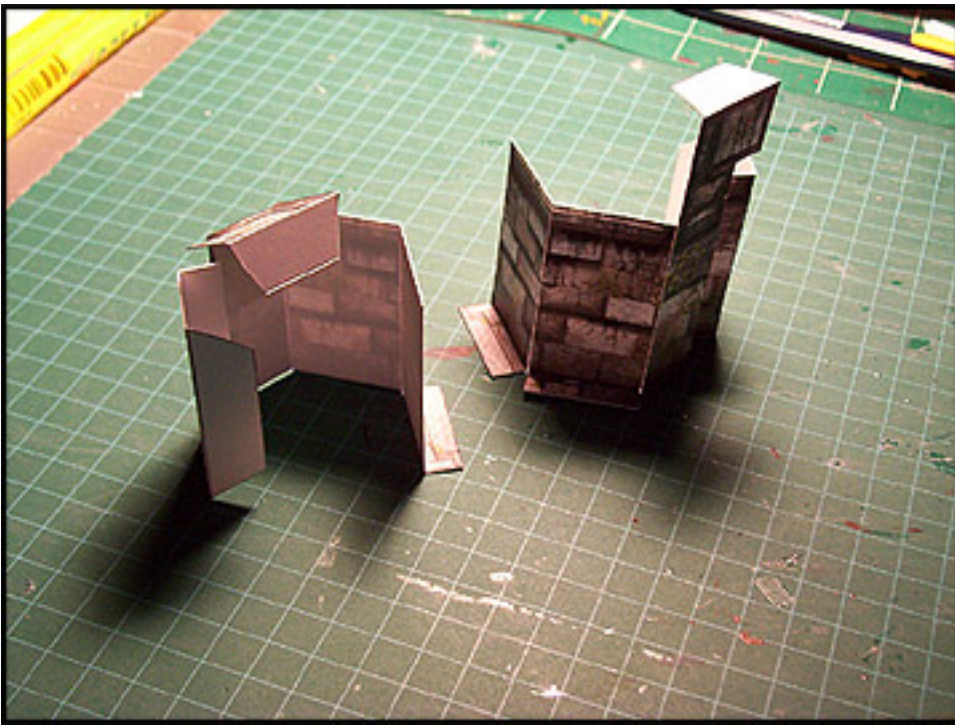




Model:	Corner
Difficulty:	Moderate
Build Time:	10 mins
Duplications:	4 to 6



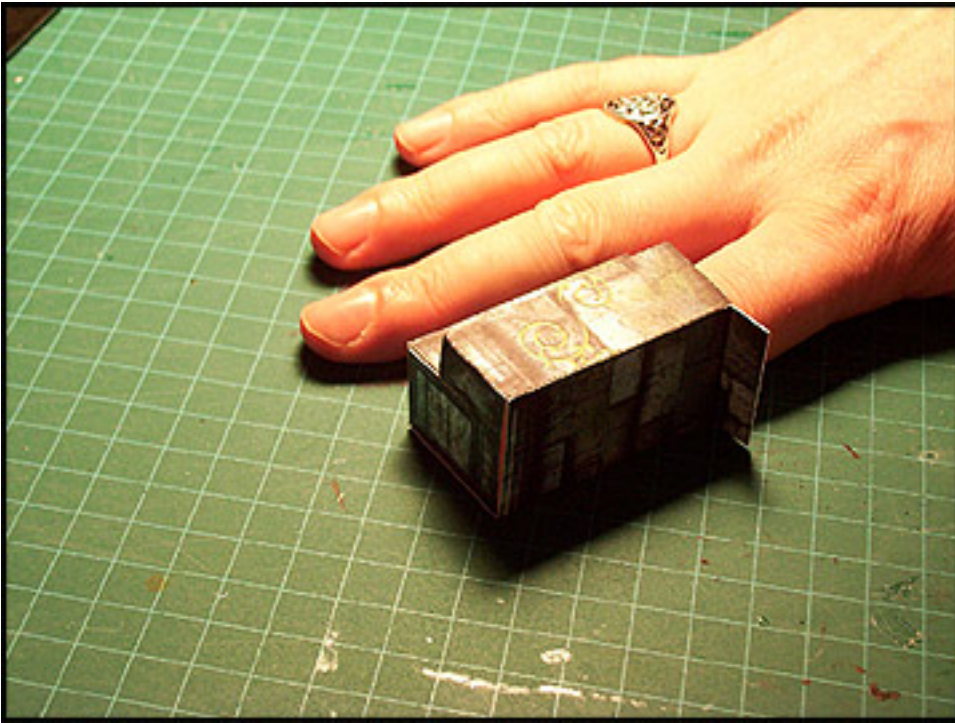
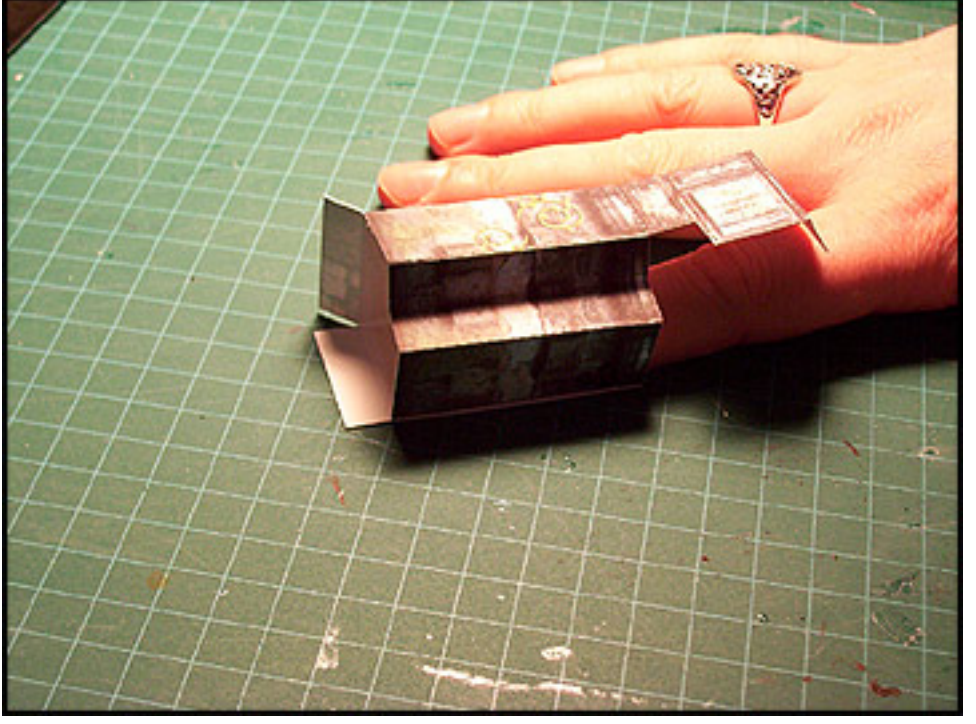
 Pirating **KILLS** small businesses like this one. If you enjoy WorldWorks Products and you want us to continue please support us by **NOT** sharing these files. Please help keep us alive!



Cut, score and fold as noted paying careful attention to areas marked with "Reverse side score" arrows.

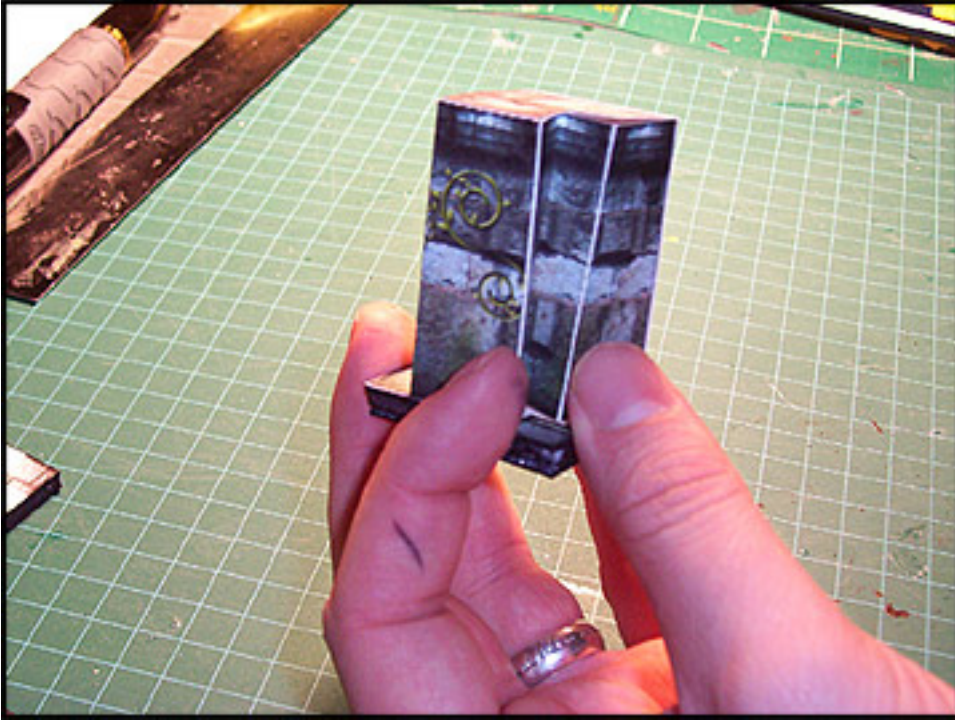
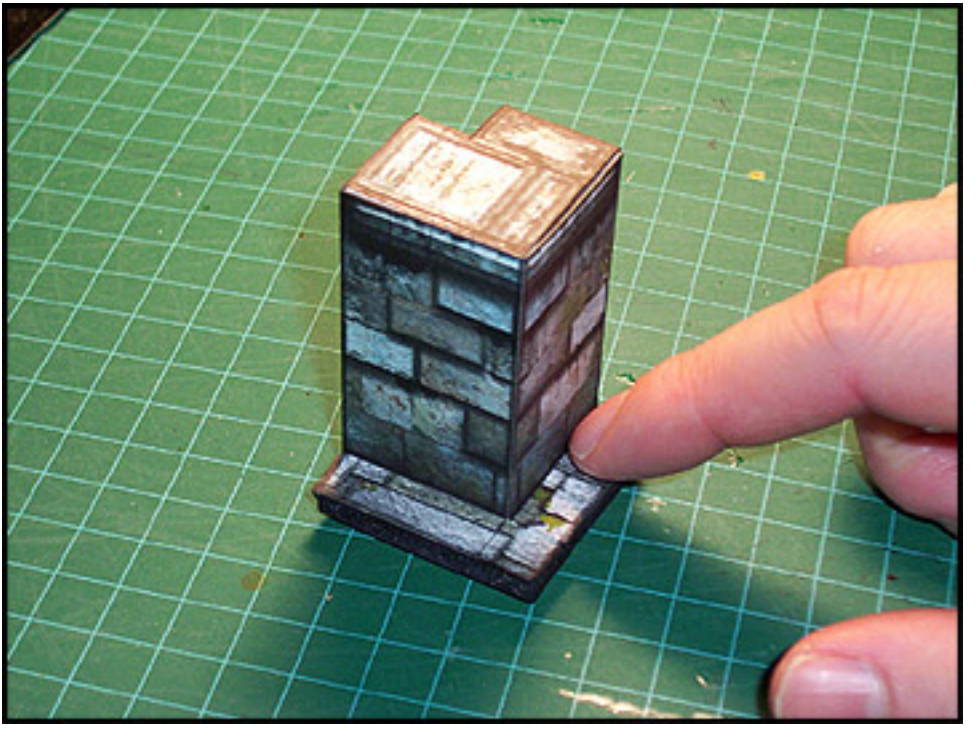
Mount your bases on a piece of foamcore. (Please see the "Pro Masterboard" section for complete instructions on mounting your base). It is vital that you complete this step now not later!

Begin by gluing the end wall tab to the inside of the opposing wall (See photo).



Glue the top wall "cap" tab to the inside of the wall.

Apply an even bead of glue to the glue base along one edge. Glue one side of the base wall tabs to the glue base. Be sure the tab does not overhang the glue base (Make sure its flush). Allow a short dry time. Bend the wall over and repeat the previous step to the remaining base tab.



Give the corner a slight bend. Do not be concerned if the edges of the inside corner are not completely flush with the base. This section was designed specifically to allow for some "give" when butting up against other wall sections.

Be sure to edge your model with a black or grey felt.

(What is "Edging"? Please refer to the included "Beginners Guide" or visit www.worldworksgames.com for more resources and video tutorials.)