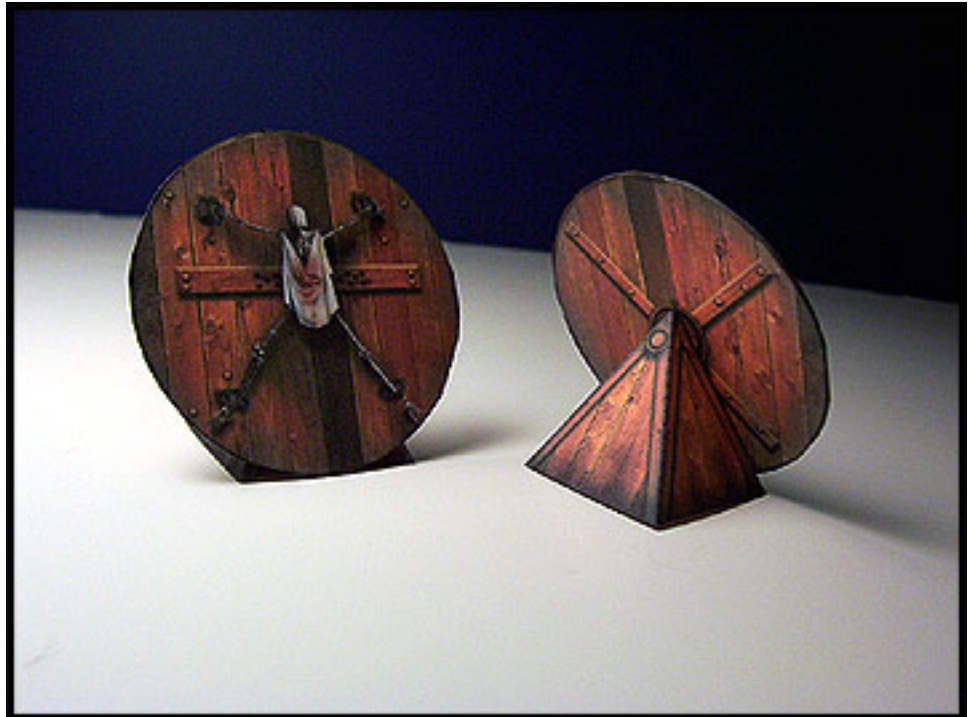




Model:	Torture Rack
Difficulty:	Easy
Build Time:	5 mins
Duplications:	2 to 4



 Pirating **KILLS** small businesses like this one. If you enjoy WorldWorks Products and you want us to continue please support us by **NOT** sharing these files. Please help keep us alive!

Cut, score and fold as noted paying careful attention to areas marked with “Reverse side score” arrows. **DO NOT** cut around the circular torture wheel, instead fold over and glue as one piece. Set to the side to dry.

- Glue the one tab of the pyramidal base to the inside of the opposing wall.
- Cut away the white space from the round torture wheel.
- Apply a thin but even coat of glue to the white space on the torture wheel base and mount the wheel.

Be sure to edge your model with a black or grey felt.

(What is “Edging”? Please refer to the included “Beginners Guide” or visit [www.worldworksgames.com](http://www.worldworksgames.com) for more resources and video tutorials.)