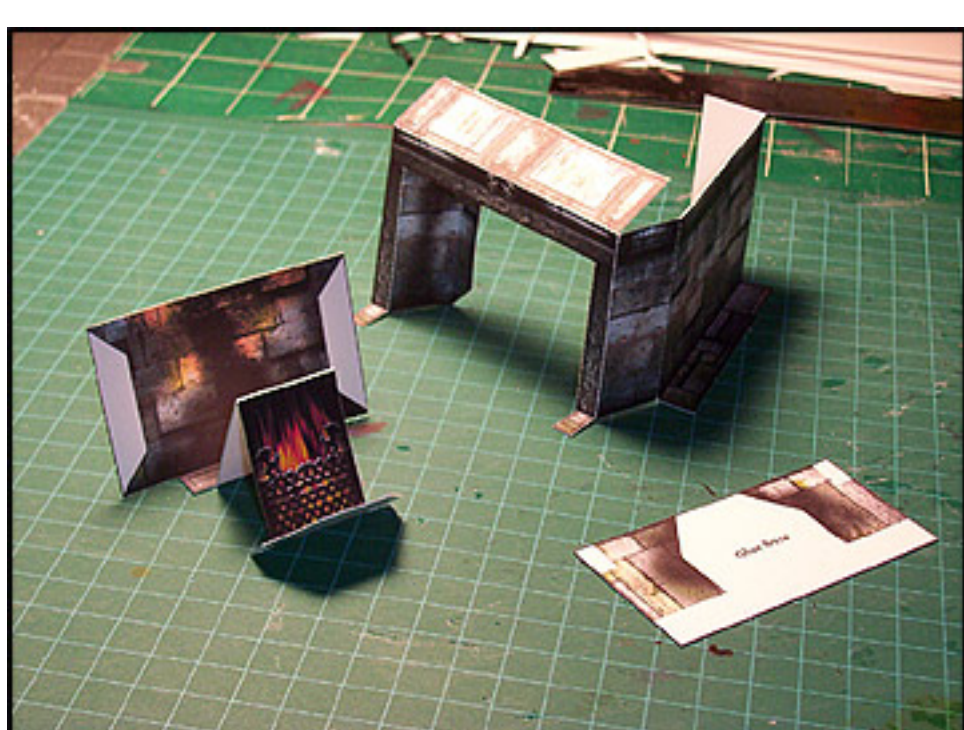


Model:	Fireplace
Difficulty:	Moderate
Build Time:	10 mins
Duplications:	2 to 4



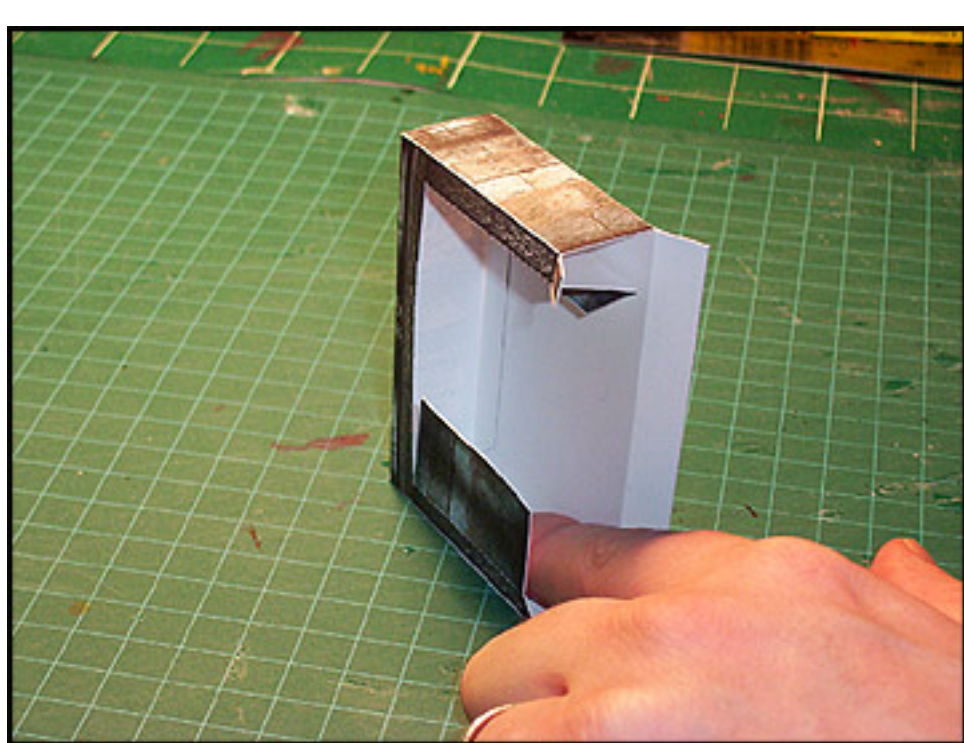
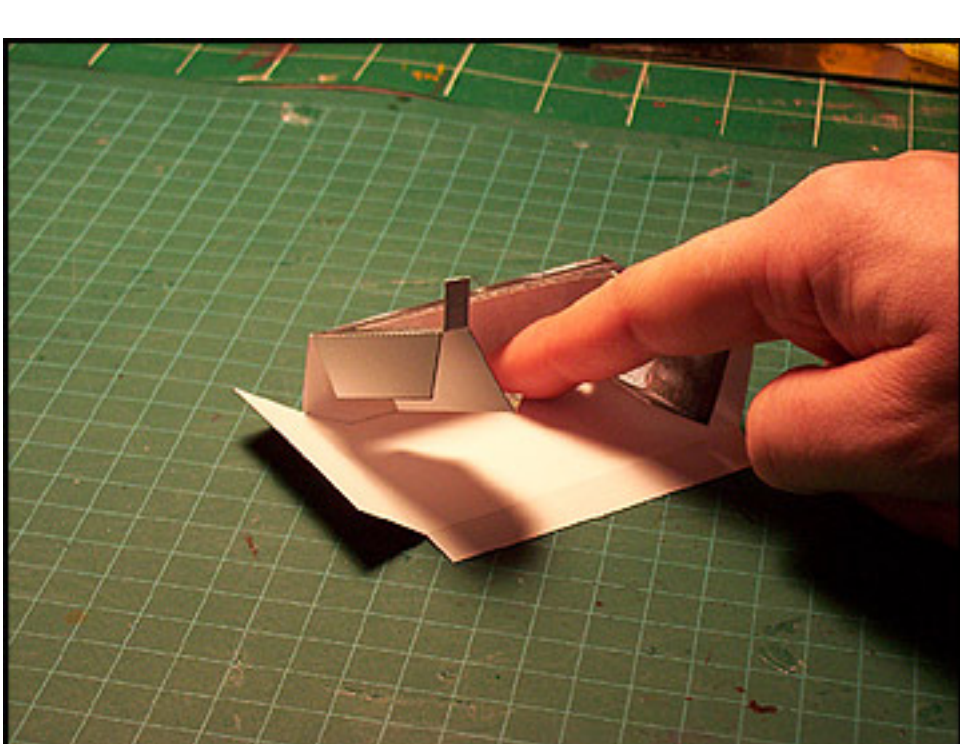
**Pirating KILLS** small businesses like this one. If you enjoy WorldWorks Products and you want us to continue please support us by **NOT** sharing these files. Please help keep us alive!



Cut, score and fold as noted paying careful attention to areas marked with "Reverse side score" arrows.

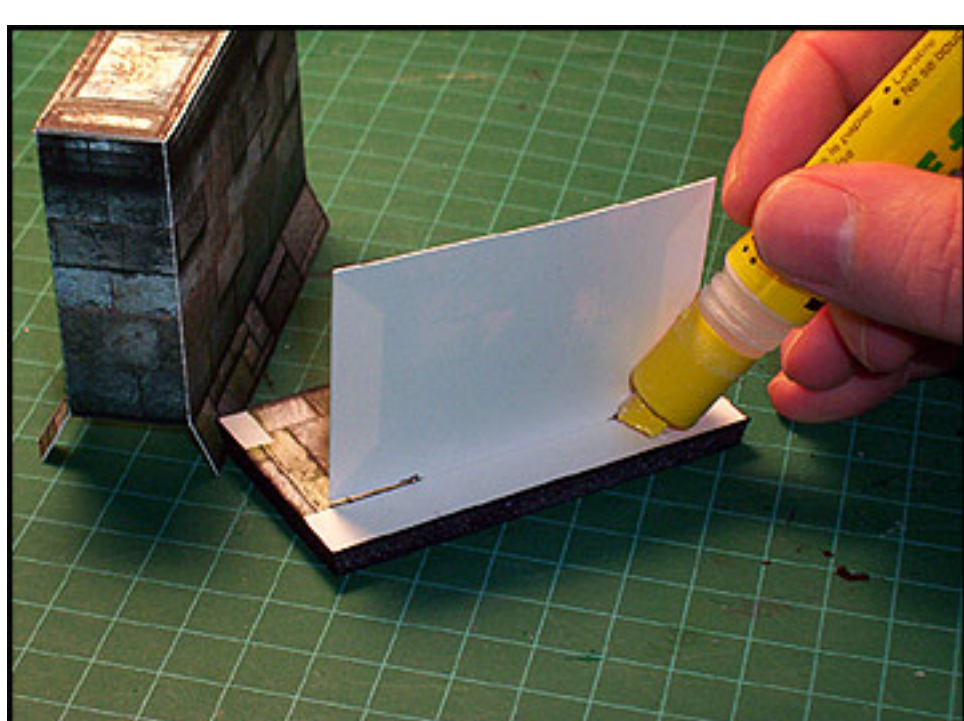
**Mount your base on a piece of foamcore. (Please see the "Pro Masterboard" section for complete instructions on mounting your base). It is vital that you complete this step now not later!**

Glue the top wall "cap" tab to the inside of the back wall (see photo).



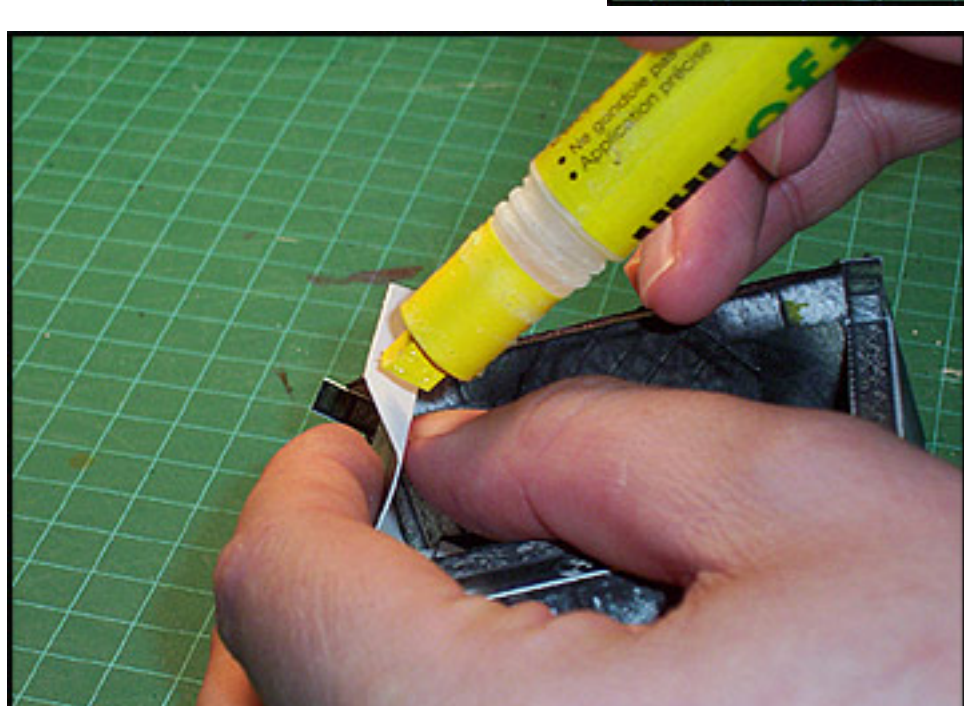
Glue the end wall tab to the inside of the opposing wall (See photo).

Glue the fire wall section to the glue base.



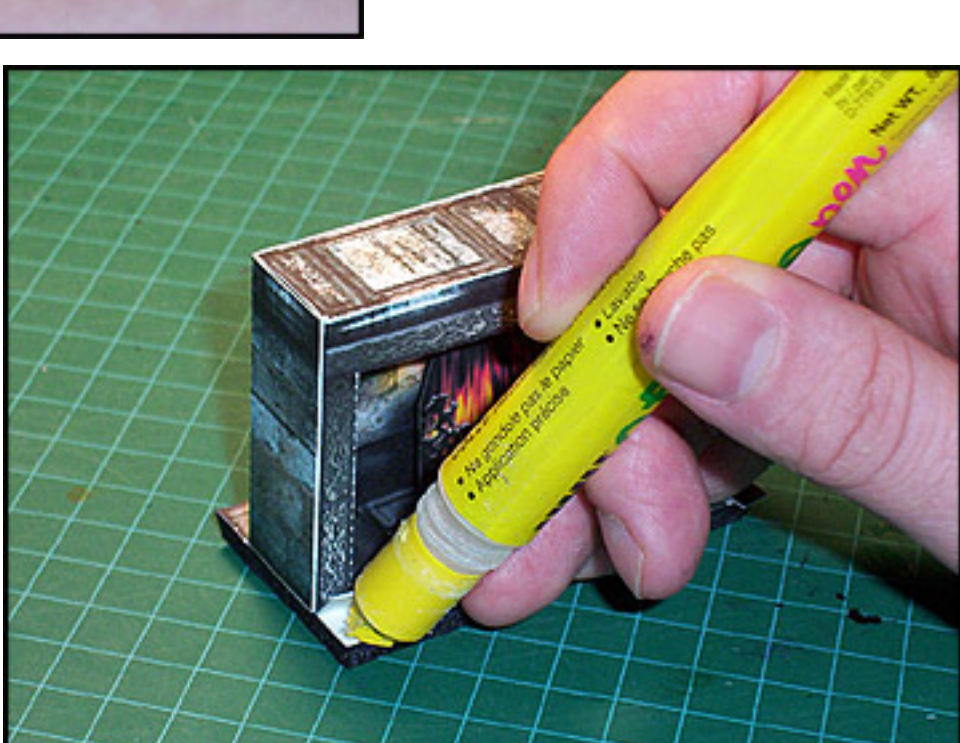
Apply a bead of glue along the back strip of the glue base.

Mount the main bottom wall tab section to the freshly glued strip and apply pressure. Make sure the tab does not overhang the glue base (Make sure its flush).



Pry back the inner fireplace walls and apply glue to the remaining inner tabs. Place in the white space along the back fire wall.

Glue the remaining two base tabs in place.



Be sure to edge your model with a black or grey felt.

(What is "Edging"? Please refer to the included "Beginners Guide" or visit [www.worldworksgames.com](http://www.worldworksgames.com) for more resources and video tutorials.)