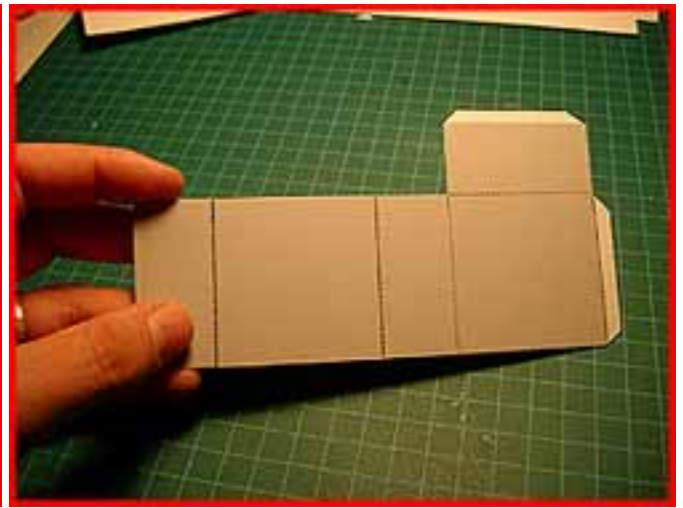
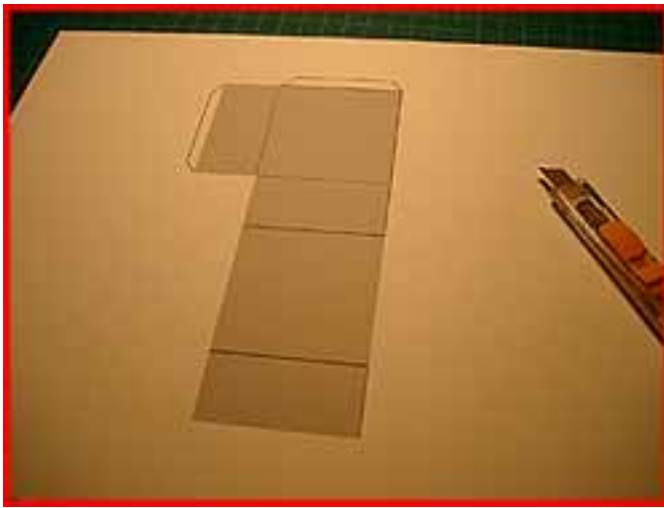




“Bookcase, Desk and IAdder”

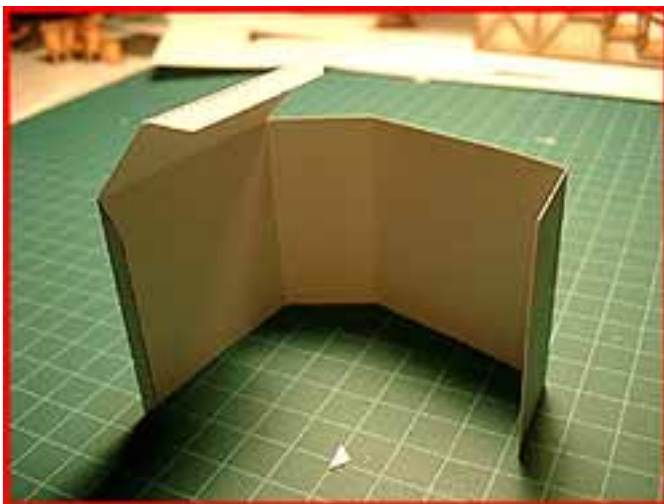
BookCase and Desk

- The bookcase and desk both follow a common fold known as the “box fold”. Score and cutout the model where noted.



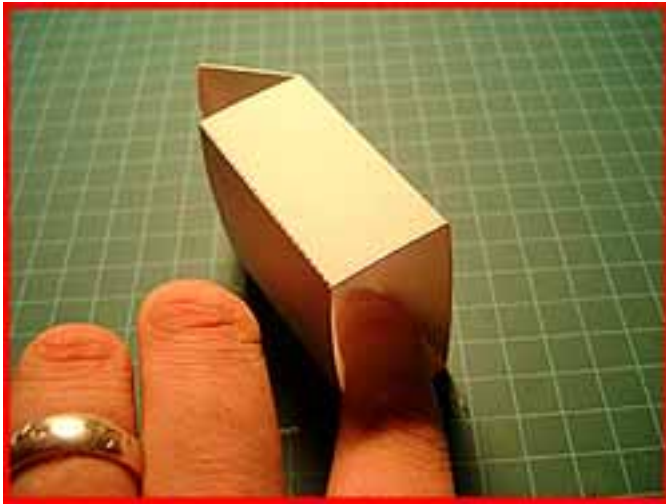
STEP 2

- Fold the model as shown below. Apply a thin but even bead of glue on the wall side glue tab.



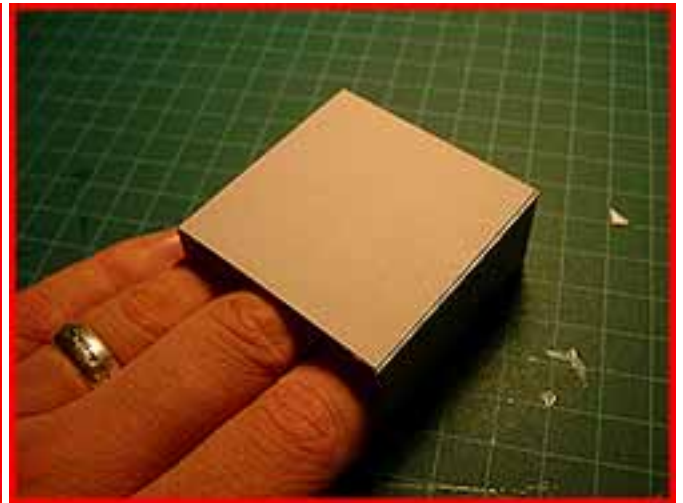
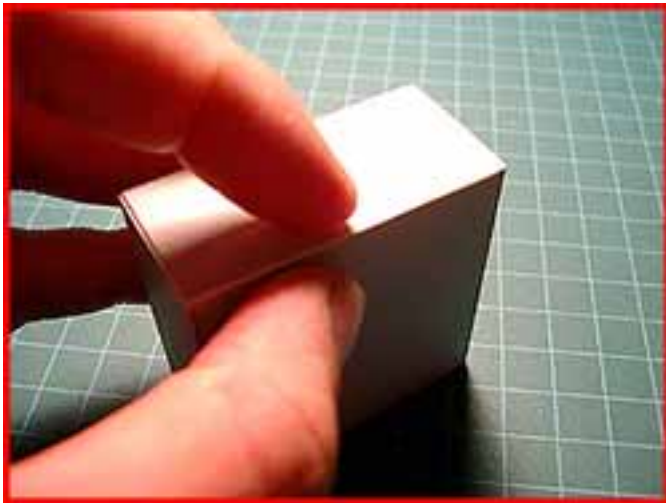
STEP 3

By lying the model down you can achieve even pressure across the length of the glue tab. The tables hard surface ensures even glue distribution and tack while applying pressure to the tab. This technique should be used whenever possible with all models. If the model is too skinny to reach your fingers into use a ruler or pencil to apply pressure. Stand the model up. Apply a bead of glue to the remaining top fold.



STEP 4

Apply some light pressure to the outside of the top glue tab and move the tab into position flush with the wall. Once you have the proper position, place the model on its back and apply pressure to the tab from the inside of the model. Once again, if the model is too narrow to reach your fingers into use a ruler or pencil to apply pressure. That's it!



The Ladder



- Cut, score and fold as noted. Be careful to reverse side score the ladder at the point where the stairs meet the side supports.
- For added realism you may wish to cut away the black area between the steps of the ladder.
- Flip the model over and use a black felt to color the reverse side of the ladder portion black.
- Once folded the construction and gluing points become obvious. glue the side supports in place so that the image appears on both sides.