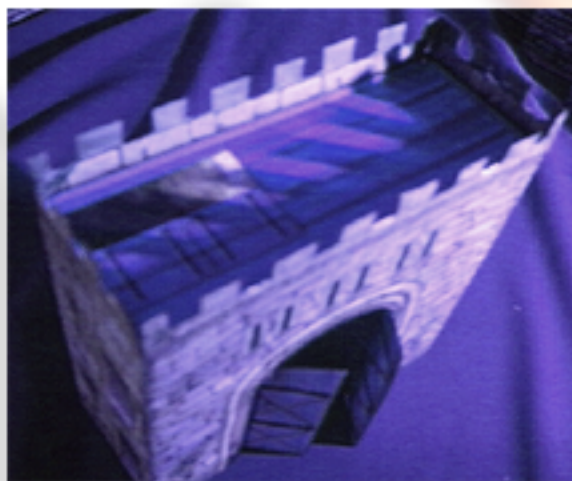


GATEHOUSE

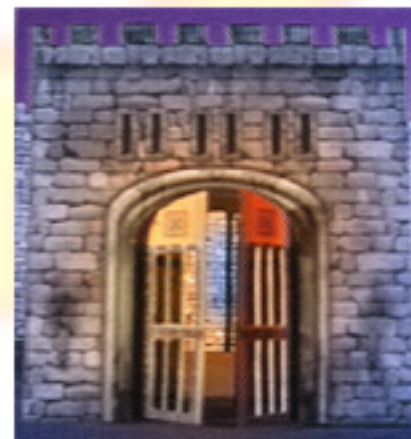


Difficulty Rating: 4

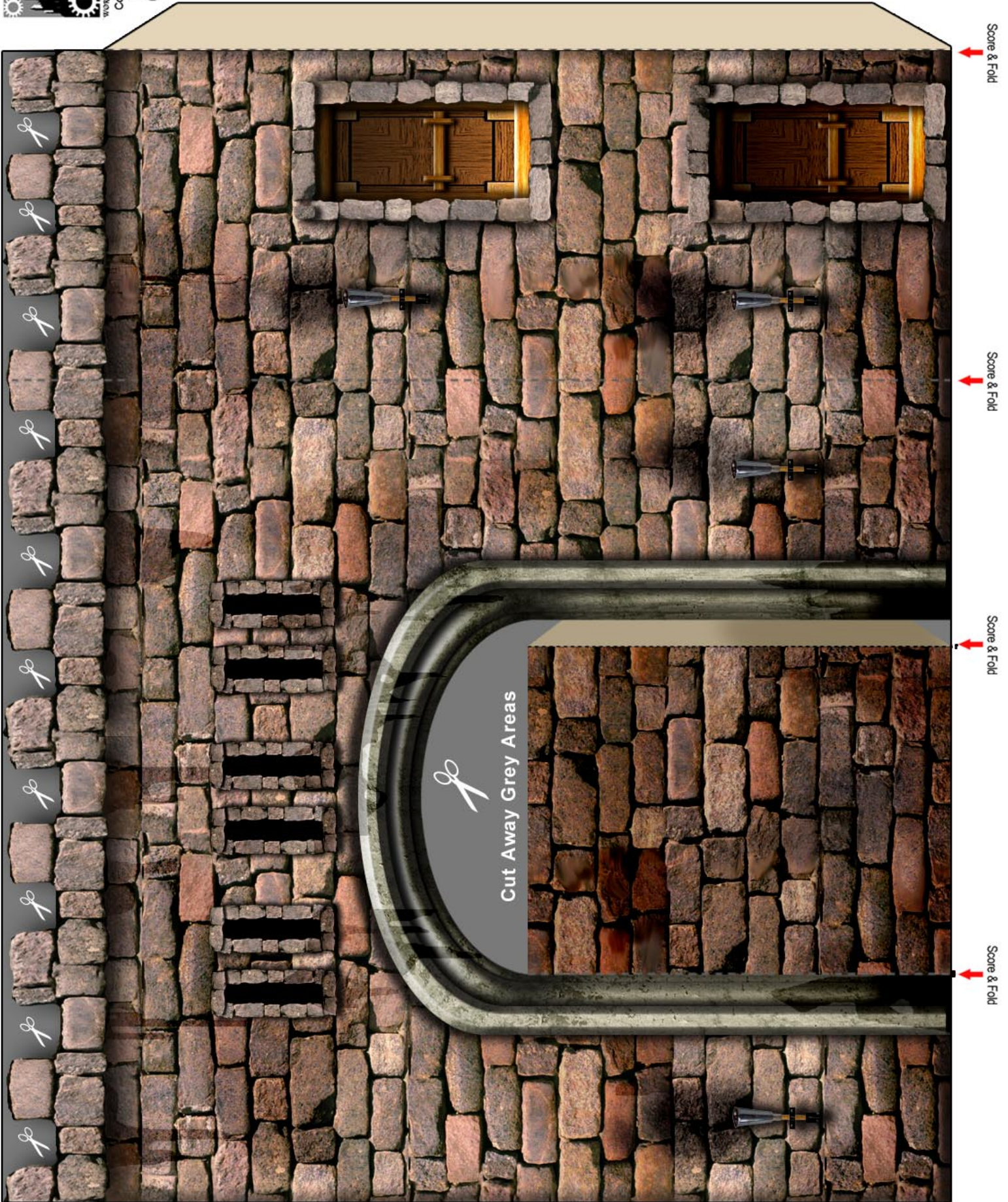
The Gatehouse is a really cool little model and while it has many folds I think you'll enjoy the building process. The end result is well worth your time!

Building Instructions

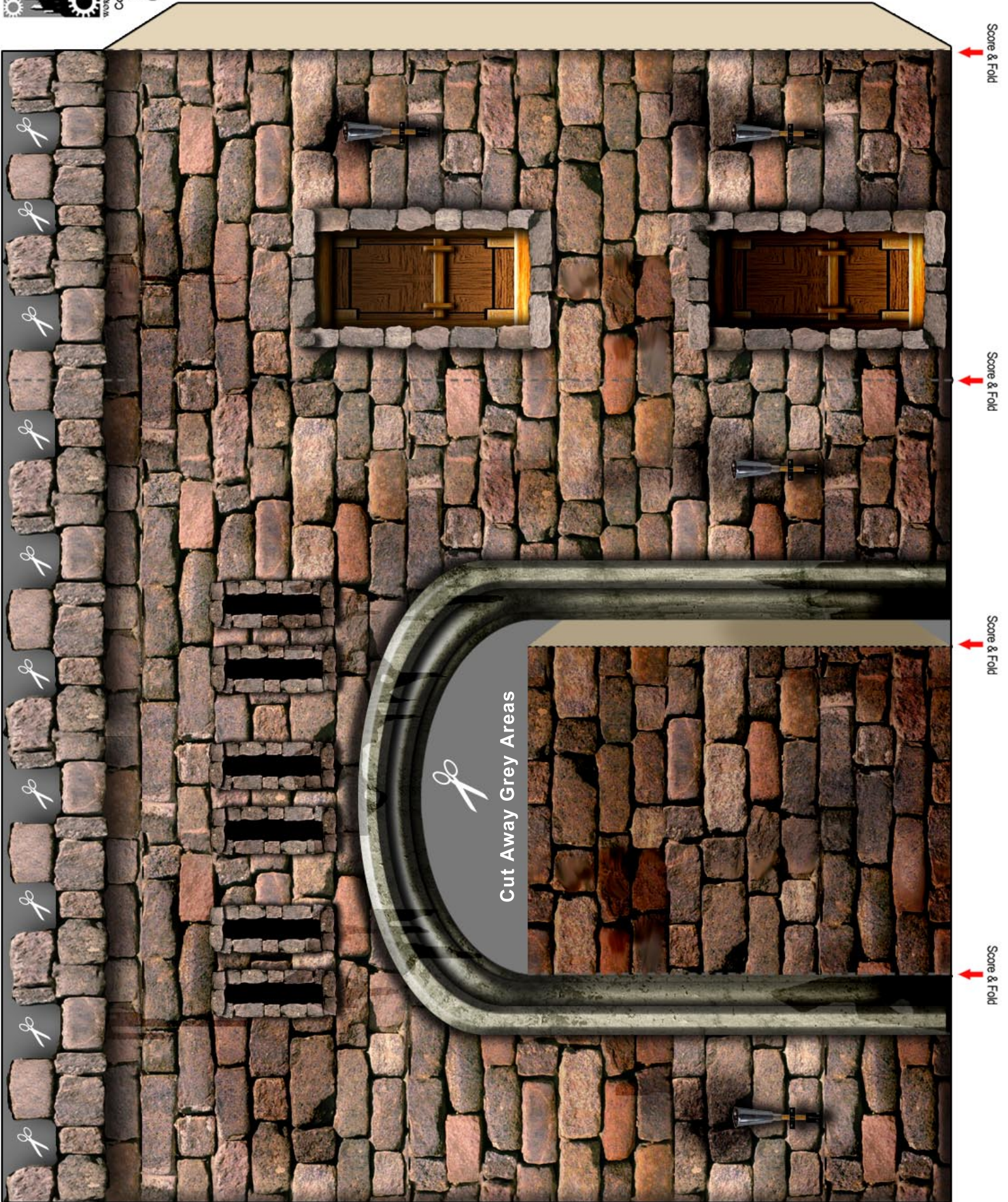
- Start by printing off all the templates for this model
(Tip: Give each page a couple of minutes to dry before cutting, See "Printing Tips")
- Cut out all of the various pieces for the model (See "Cutting Tips"). Pay special attention to the area in the middle of pages 1 and 2 where it makes note to "cut out grey areas". Be sure to make a straight cut down on the side with the extra tab. This will serve as the inside of the tunnel wall.
- Score and fold where marked
- Glue pages 1 and 2 together along the tabs. Use the "wooden ruler technique" (As seen in the beginners guide under "Gluing Tips") along the longer folds.
- Fold and Glue the inside tunnel walls to the opposite side of chamber creating a tunnel through the center of the Gatehouse.
- Fold, sandwich and glue the main doorway on page 3. Be sure to let this piece dry for at least 5 minutes before proceeding.
- Once the door is dry cut it down the center black line creating two separate doors. Score and fold the hinges for each door.
- Glue the door hinges to the inside of the tunnel wall. You can choose whatever depth suits your needs.
- The Gate on page 4 is an optional, additional gateway. If you choose to use it repeat the above steps. Make note of the grey areas where the bars are located. Remove these areas once the piece has fully dried.
- Take the roof piece from page 3 and insert into the top of the Gatehouse for fit. Be sure that the gatehouse roof gluing tabs are just below the top stones of the house. Once you are sure of position glue any one of the tabs, allow to dry and continue gluing the remaining tabs.



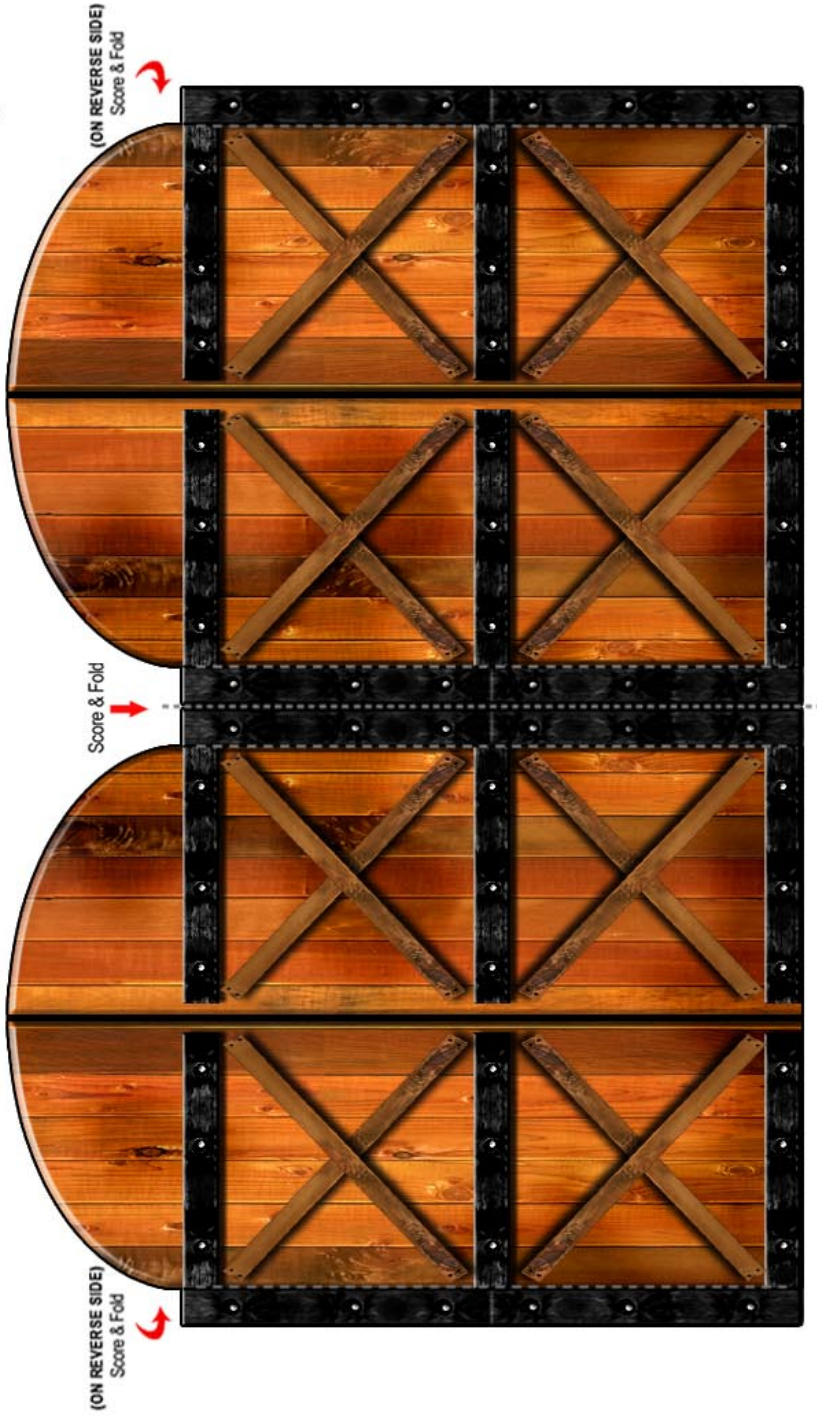
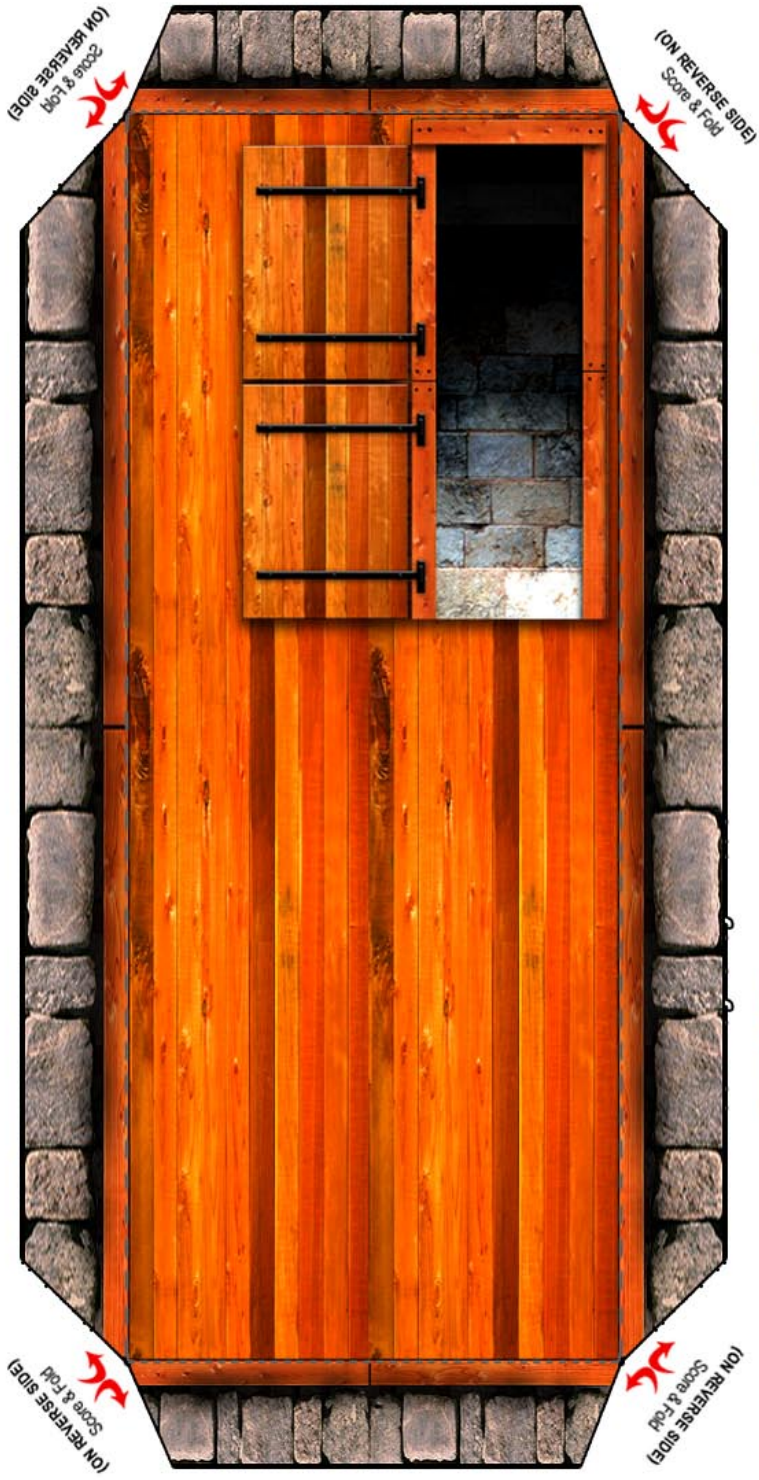
GATEHOUSE 1



GATEHOUSE 2

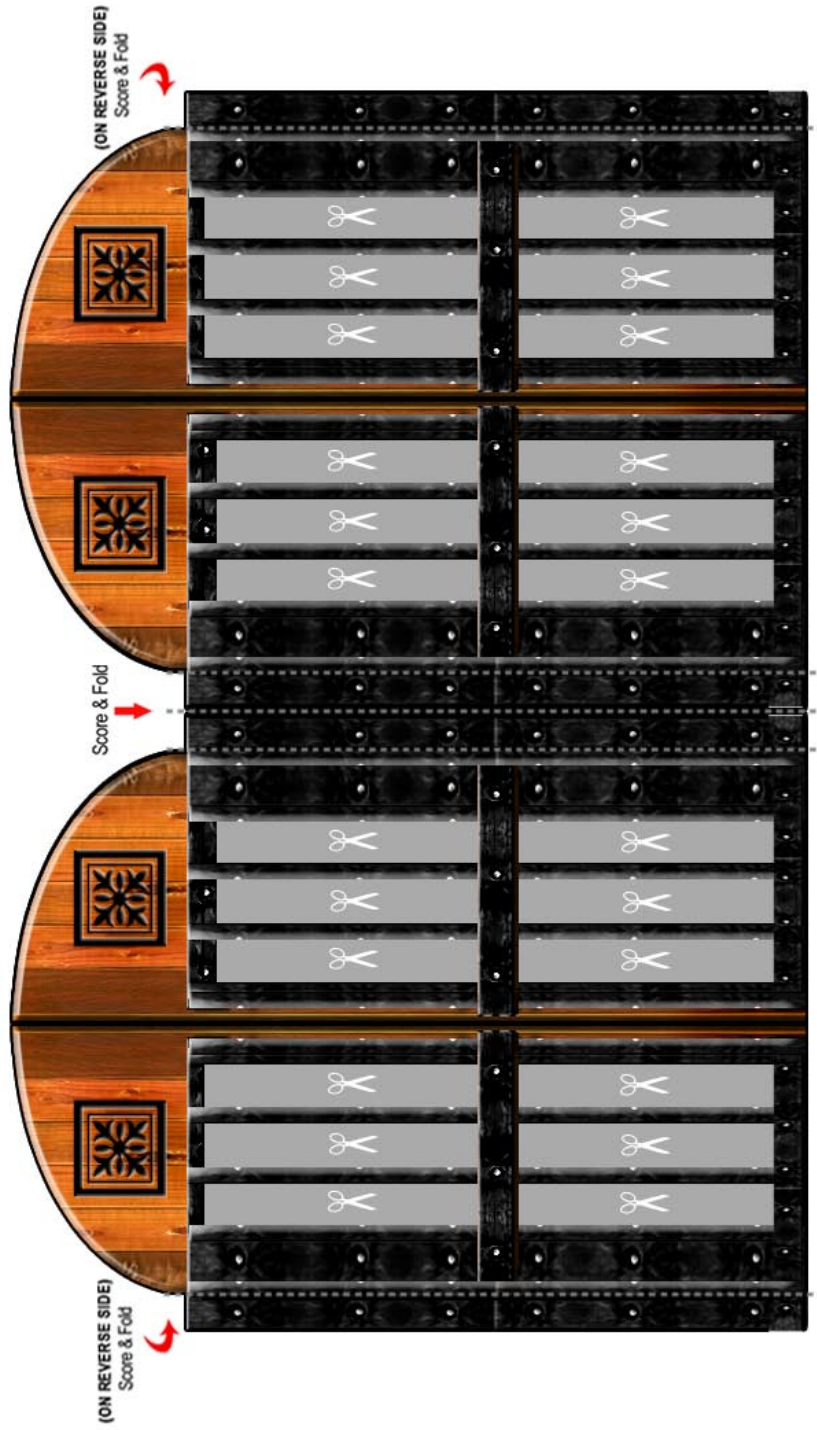


GATEHOUSE 3



----- SCORE & FOLD ALONG GREY DOTS
✂ CUT AROUND BLACK BORDERS

GATEHOUSE 4



----- SCORE & FOLD ALONG GREY BOTS
✂ CUT AROUND BLACK BORDERS

NOTE: Remove grey areas AFTER pasting gate together