

THE COURTYARD MAINHOUSE



This structure really pushes the size limitations of a card stock model. If you can, buy the heaviest weight card stock you can find for this one as it has some large surface areas. I used 110 LB cardstock and it worked great although there was some minor sagging on the roof. The thing to remember is that once all the pieces are in place the model will become more rigid.

Difficulty Rating: 6

A rating of 6 means that this model is fairly detailed and involves many cuts and folds. So far this is the most complicated model in any of the WorldWorks sets. If you can get through this one the rest are a breeze!

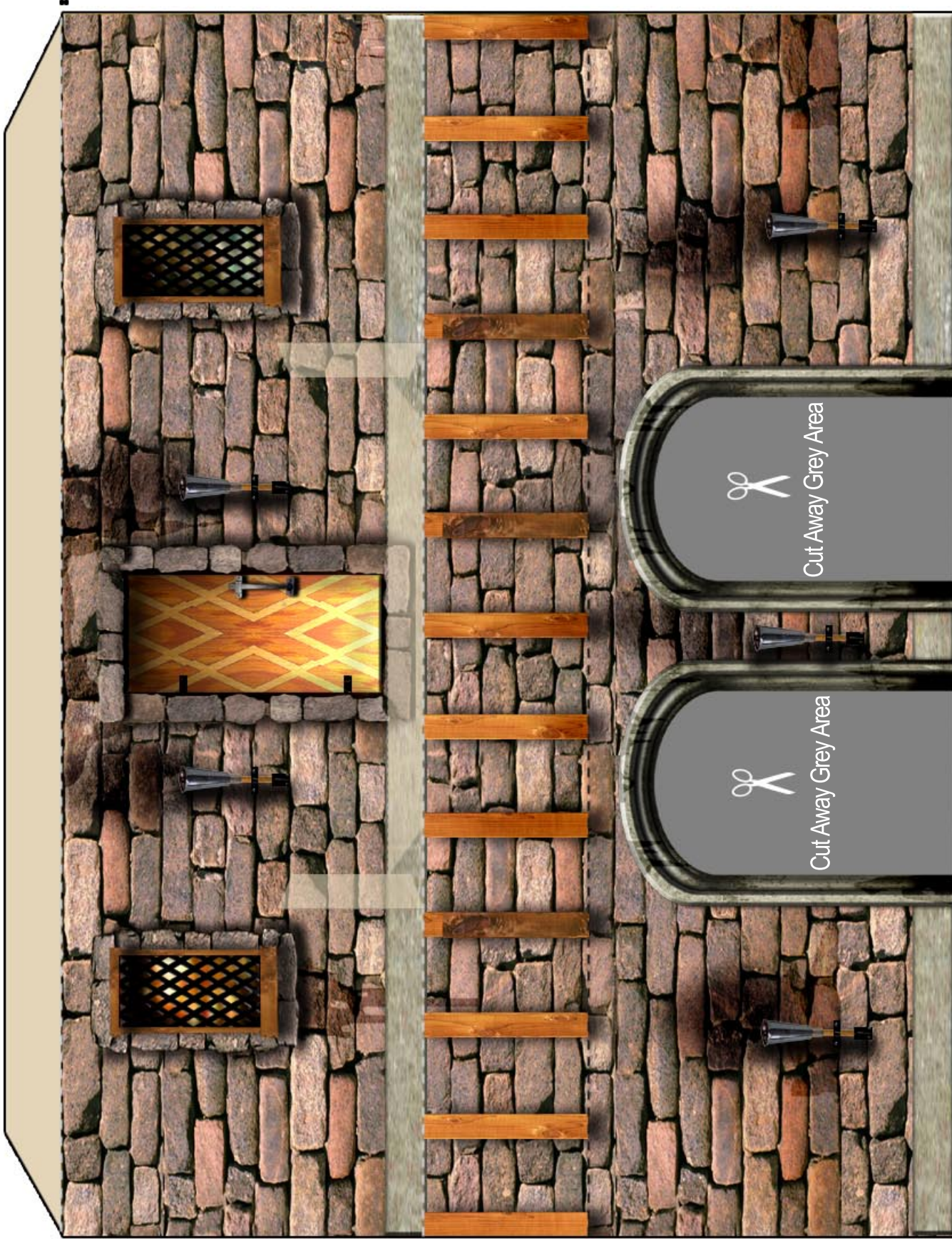


Building Instructions

- Start by printing off all the templates for this model (Tip: Give each page a minute to dry before cutting)
- Cut out all of the various pieces for the model (See "Cutting Tips")
- Take the items from page 5 (the stairs and balcony) and begin to score and fold them. Be careful to note which pieces require reverse side scoring and folding. The stairs in particular require that you score and fold the front and back with each alternating step. The first fold line from the top of the stairs is a front side score while the second is a reverse side score and so on. All other items on page 5 are front side folds unless otherwise noted.
- Take page 4 (side house with door) and score but DO NOT FOLD at this point. Take the guardrail (page 5) and place it on the marked position by the door. Once you are sure of position and fit glue the guardrail tab to this position. Take the stairs that you have previously folded and place them underneath the second story door. They should be flush with the guardrail and extend to the base of the wall. Once you are sure of position glue the tabs facing the wall and secure. Glue one tab at a time and work your way down from the top. Once dry you can now glue and secure the guardrail to the facing stair tabs.
- Take page 1 (front of building). Score the building but DO NOT FOLD at this point. Paste the balcony base (page 5) to the marked tab position under the second story door. Now take the balcony guardrail and position before pasting on marked tab areas. Secure the guardrail. Now glue and paste the remaining balcony base tabs to the guardrail. Now you can fold this page to include the overhang.
- Take page 4 (door with stairs) and fold all of the tabs. Take page 1 (front of building) and position it next to page 4 for fit. Once you clearly understand how the buildings fit together glue the first tab on the far right of the stair wall. –Show picture. (Tip- use ruler technique for these folds). Once this section is secure continue to glue the next 2 tabs in the same fashion.
- Take page 3 (The other side without stairs) and glue to page 1 (front side) with the same method as the previous step.
- Take page 2 (Back of house), fold and score and glue to pages 3 and 4.
- Take the two copies of page 6 (roof section) and discard one of the central supports (The long grey spine). Take the remaining spine and score and fold. From the top peak of the roof, place one half of the roof section on for fit. Make sure that there is a small overhang around the edges of the building. Flip the model over and glue the back wall tab to the roof section. By flipping the model over you will have a solid and flat surface to glue the roof sections. Continue to glue the remaining tabs. Repeat this process on the other roof section. Now take the grey spine and glue it to the top peak of the roof. This does two things;
 1. Adds support to the two roof sections
 2. Hides the seam of the joining sections

Once the spine is loosely glued to the roof sections flip the model over and apply pressure to the area from the reverse side. This will ensure that the roof is securely fastened to the roof spine and will prevent sagging.

- Finally, take the two doors section from page 5, score, fold and place inside the model. This section should fit so that both doors are in line with the two arches. This gives the effect of having a recessed entryway.



Score & Fold
↑

Score & Fold
↑

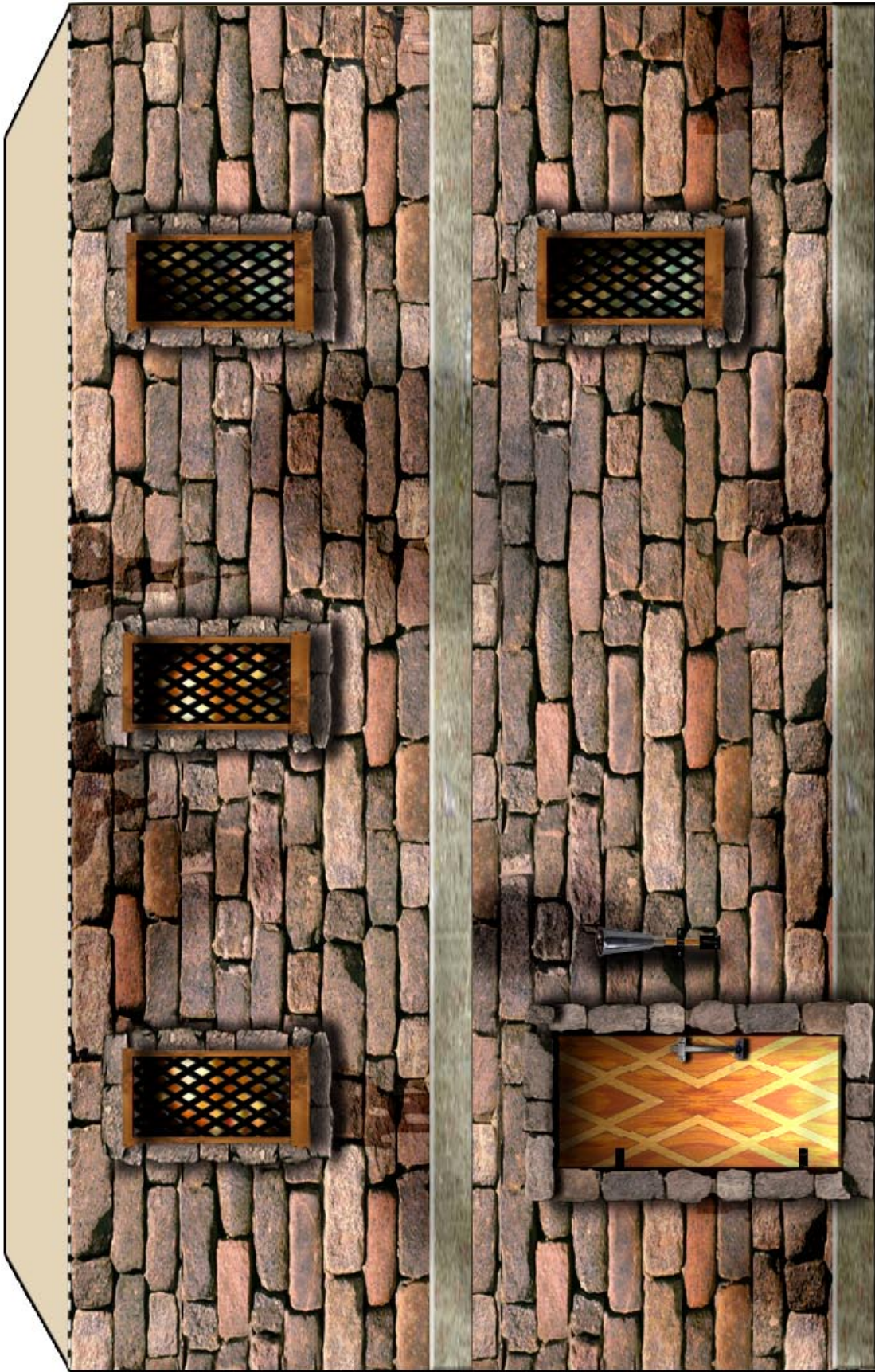
(ON REVERSE SIDE)
Score & Fold
↶

Cut Away Grey Area

Cut Away Grey Area

MAINHOUSE 1

----- SCORE & FOLD ALONG GREY DOTS
✂ CUT AROUND BLACK BORDERS

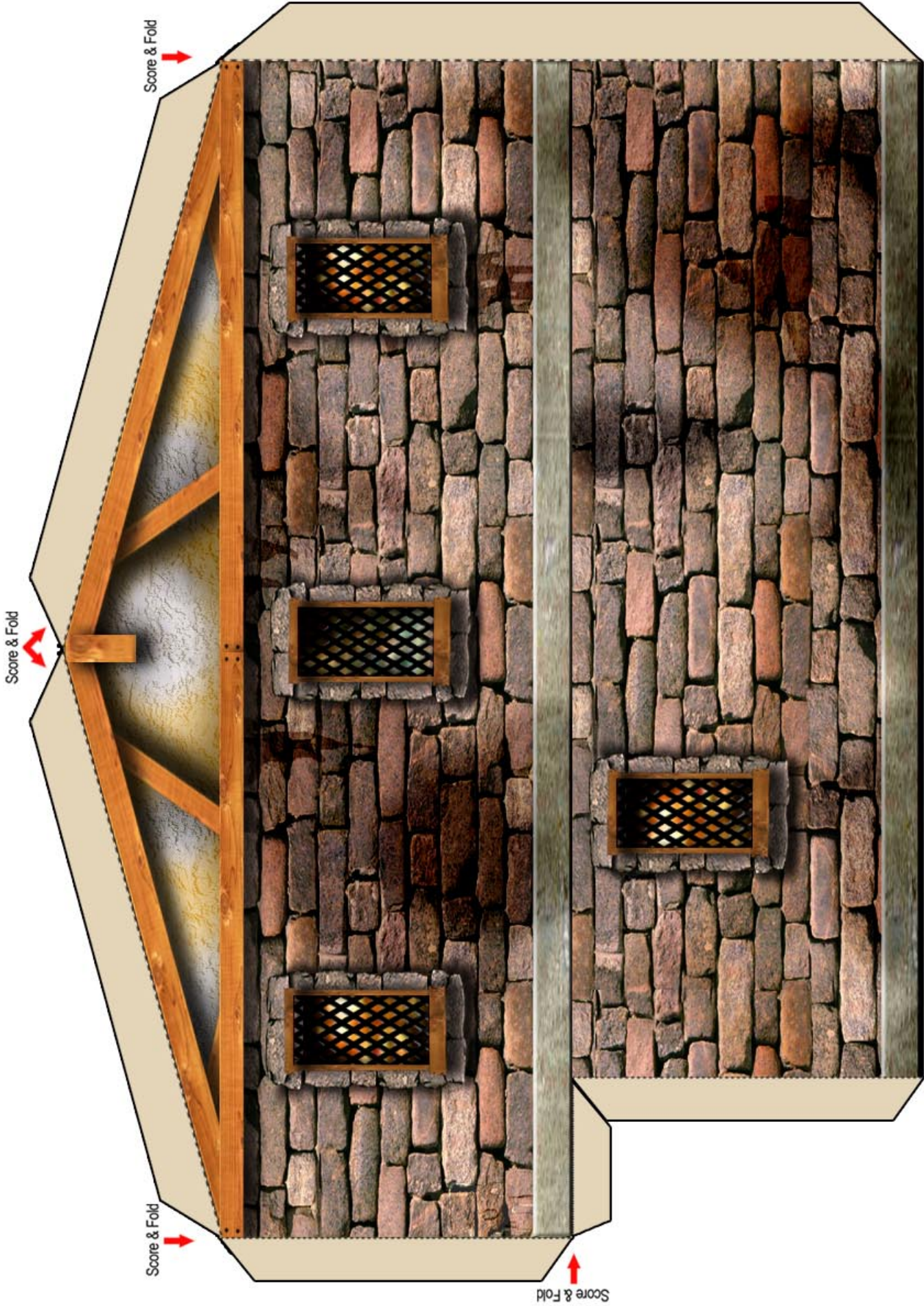


↑
Score & Fold

----- SCORE & FOLD ALONG GREY DOTS
✂ CUT AROUND BLACK BORDERS



MAINHOUSE 2

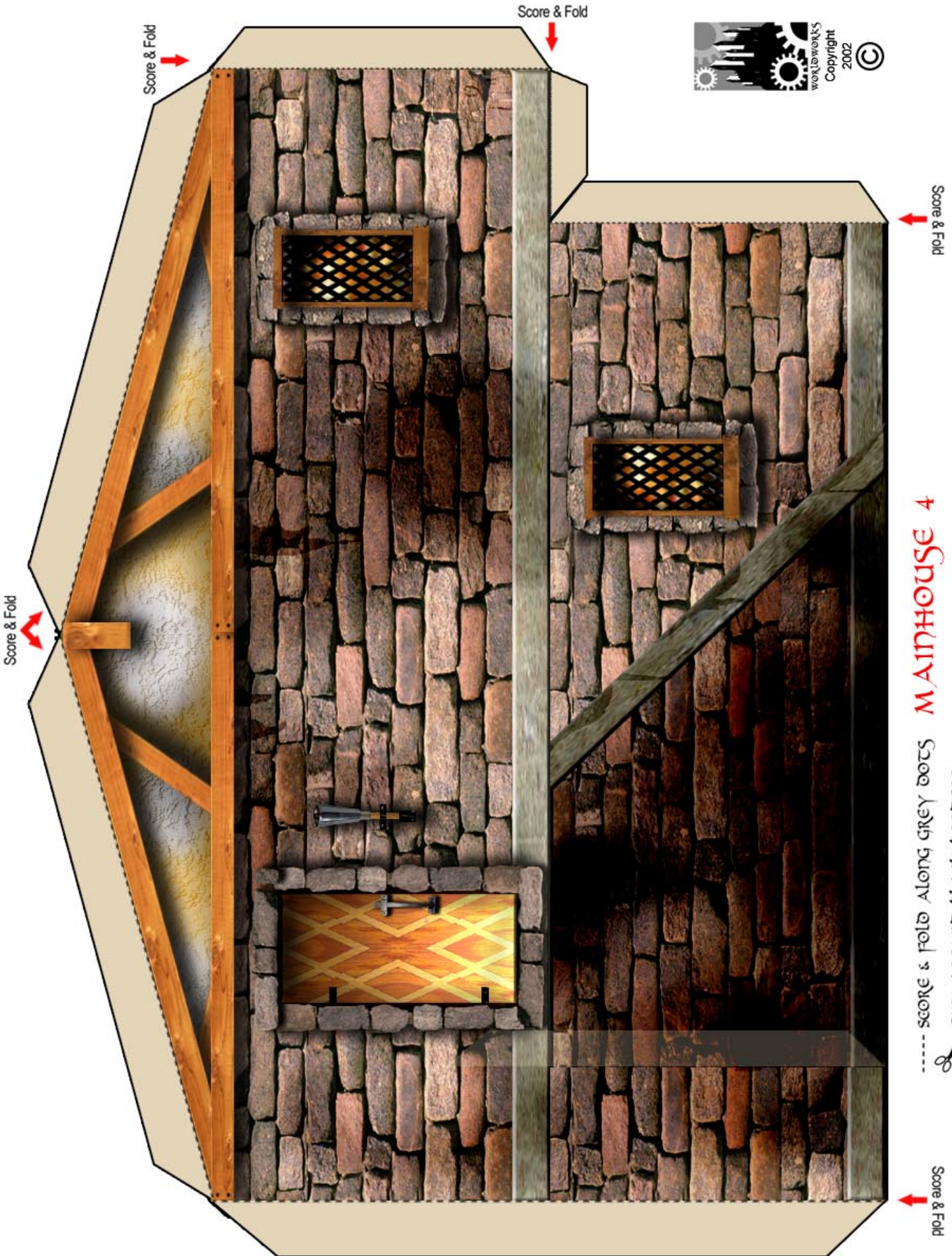


MAINHOUSE 3

----- SCORE & FOLD ALONG GREY DOTS

 ✂ CUT AROUND BLACK BORDERS

Score & Fold

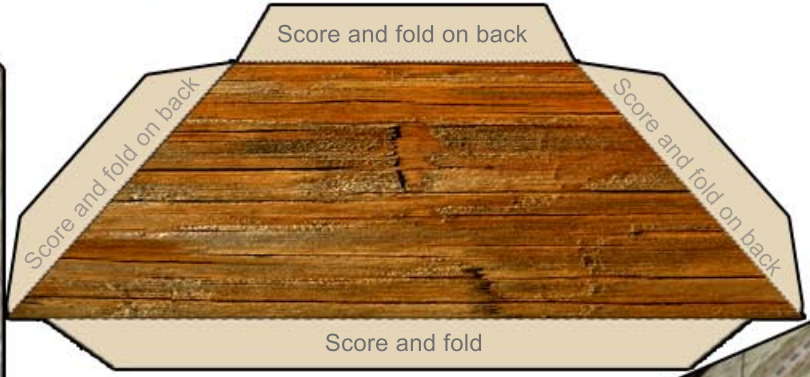
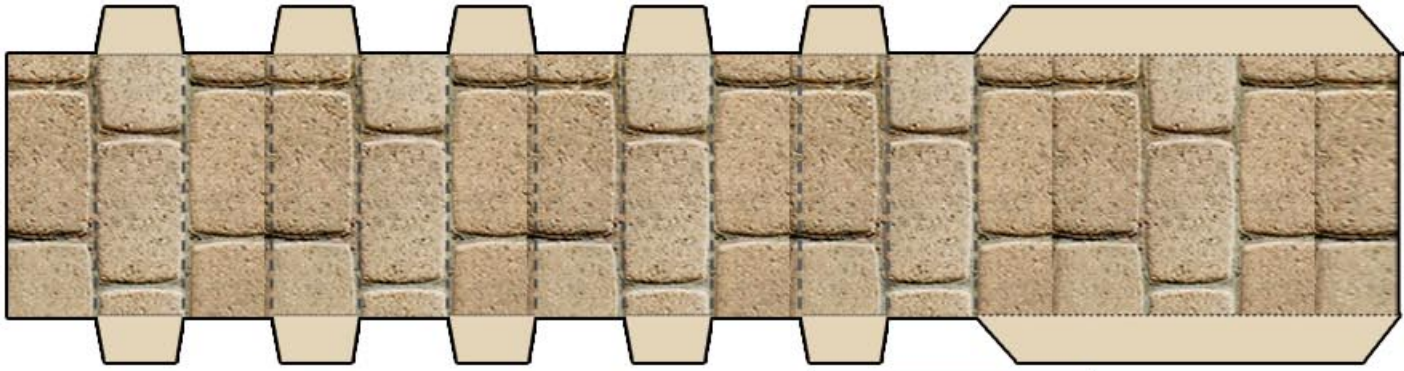


wek@work
Copyright
2002 ©

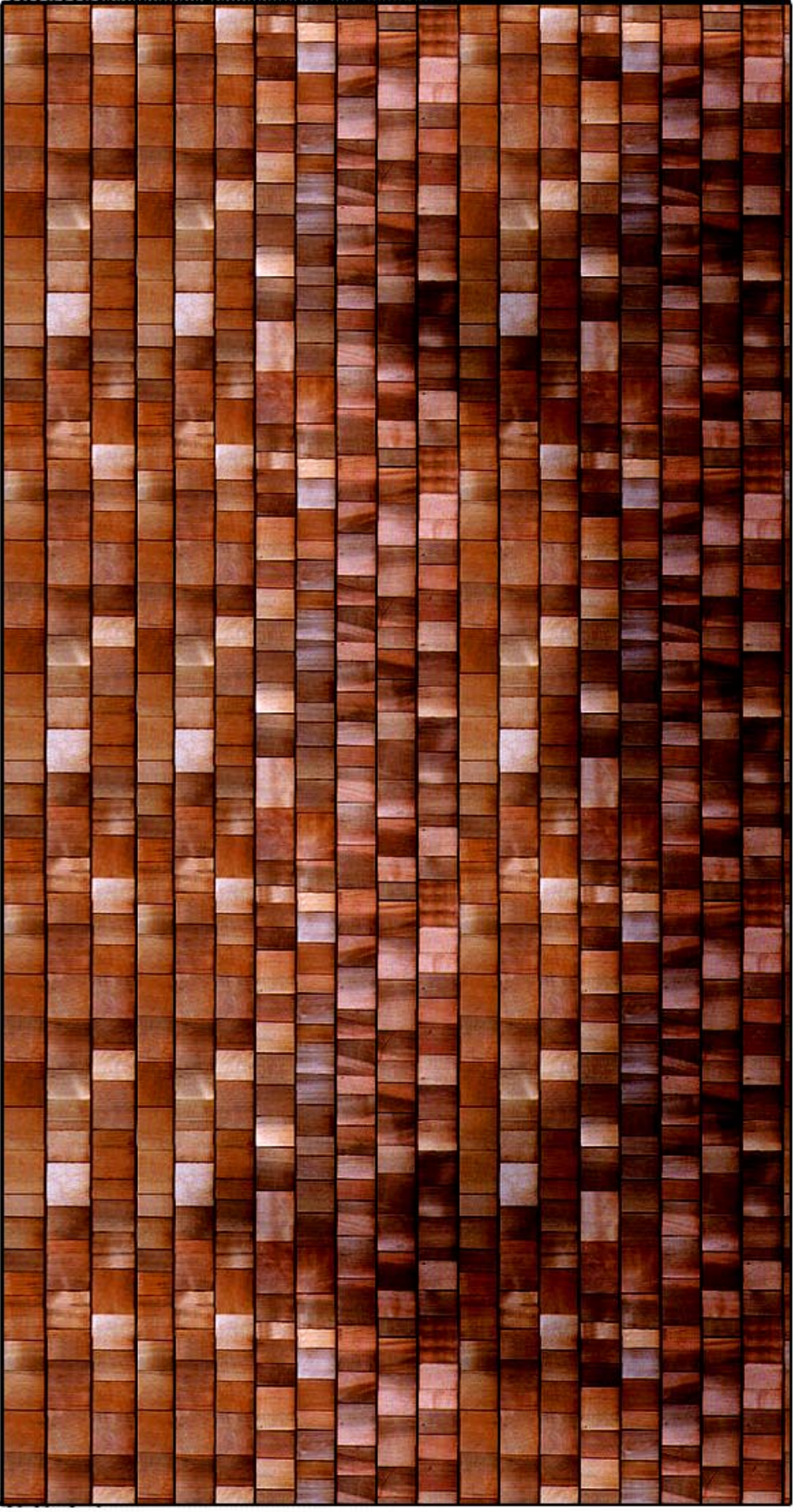
MAINHOUSE 4

----- SCORE & FOLD ALONG GREY DOTS
✂ CUT AROUND BLACK BORDERS

Score & Fold



Note: Print this page twice



Score & Fold



----- SCORE & FOLD ALONG GREY DOTS
✂ CUT AROUND BLACK BORDERS

MAINHOUSE PAGE 6