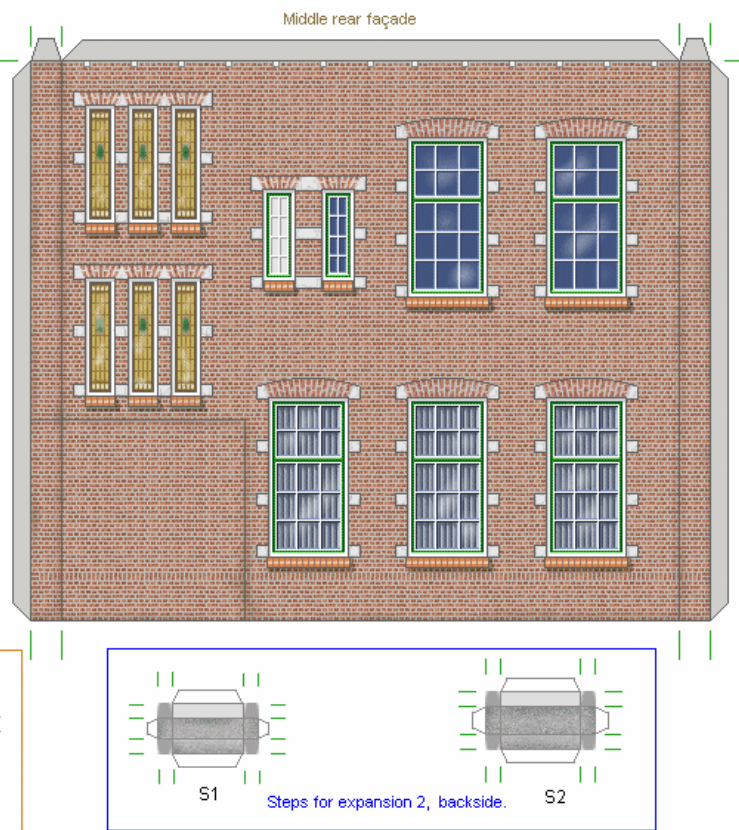
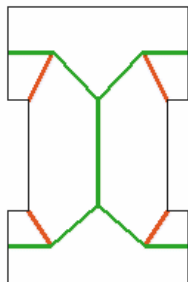




Notes about the roof.

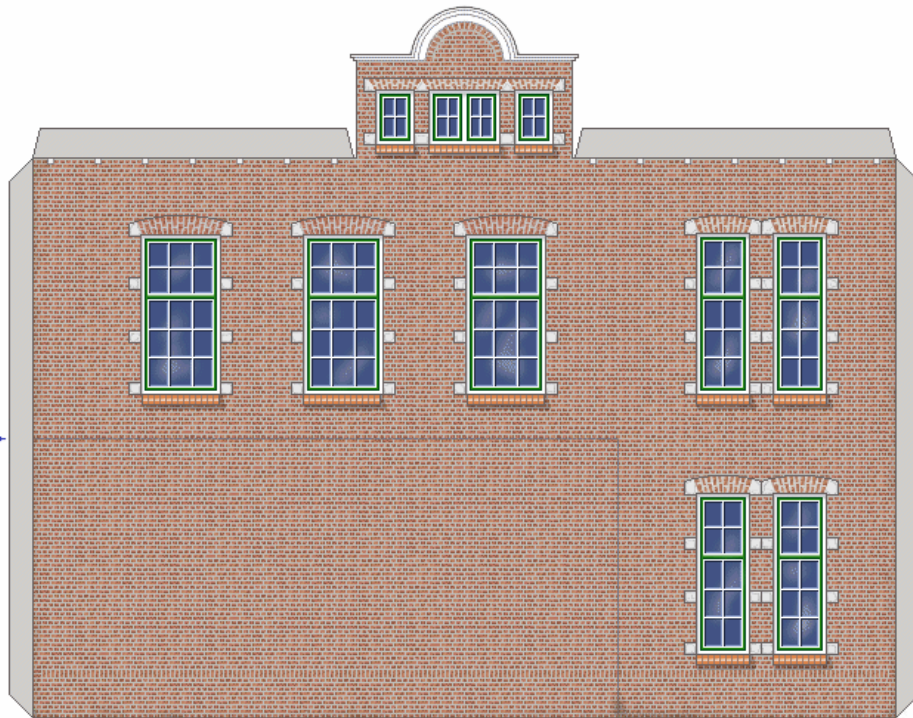
Green marked areas is where the rooftops come.
Areas with red line have NO tiles, so glue carefully. Don't let glue show here.





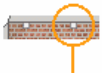
Left façade, with balcony.

Right façade



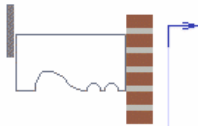
Right façade

Keep these lines just inside walls of expansion.



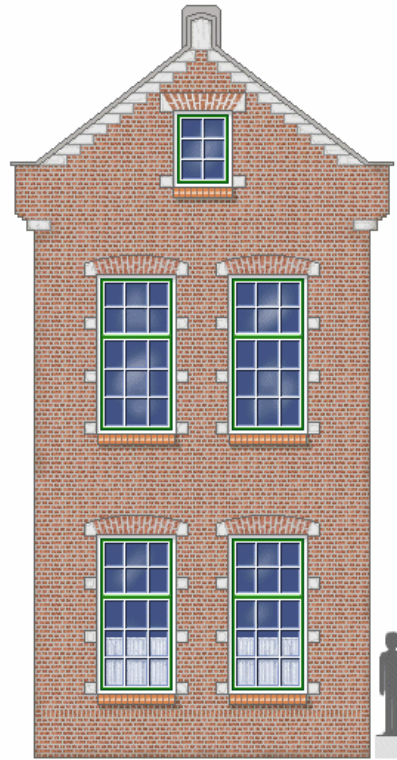
Squares show where supports are placed, not their actual size !

Here, the supports are 3 bricks high, plus cement.

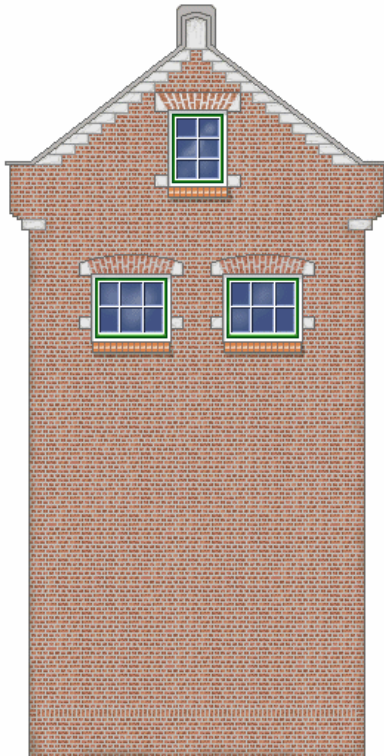




Left front façade



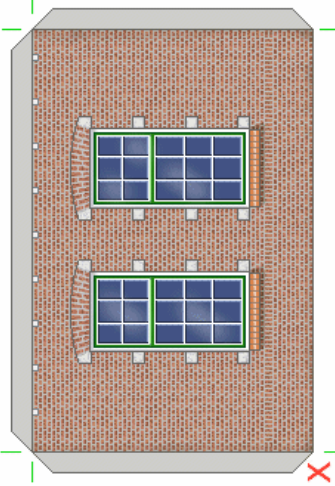
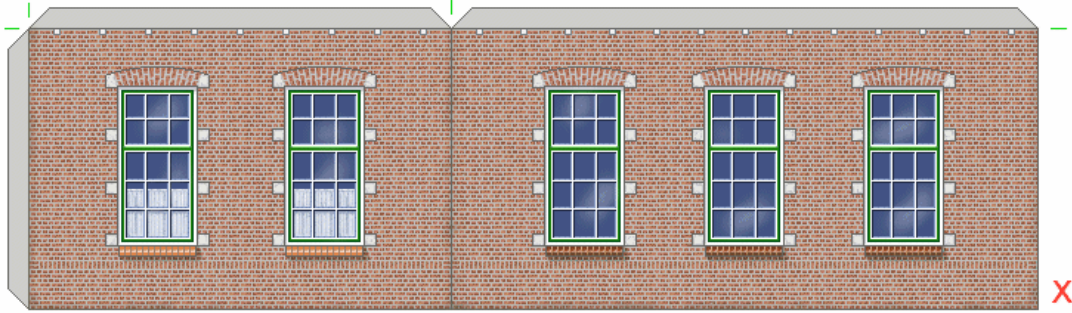
Right front façade



Right rear façade

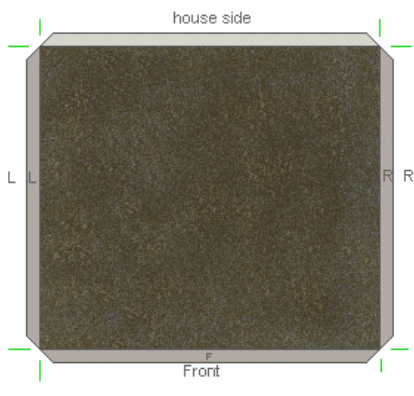
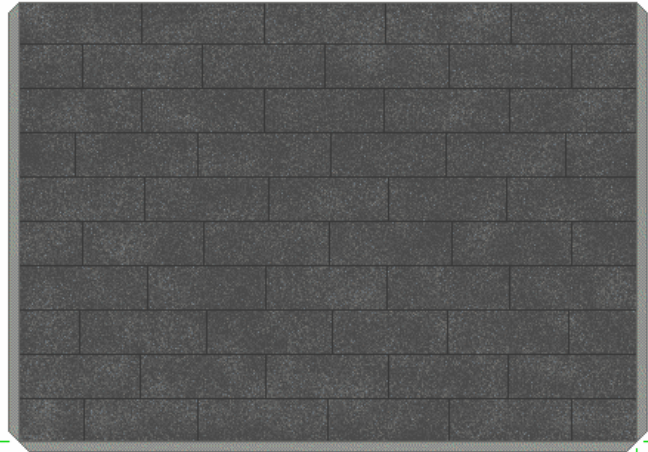


Left rear façade



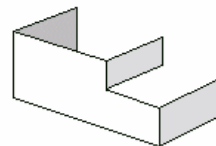
Expansion 1

Please make your own flap. Cut out straight and make sure roof lines up nicely against wall. ↘



Expansion 2, backside.

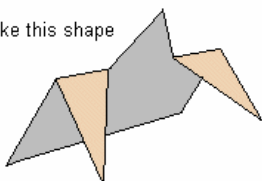
make this shape




Check pictures for placement of white roof lining.





make this shape



Cut and stack A, B, C, D and E.
Roll up F solid and place on top.
Paint top of F black to simulate opening.



F
E
D
C
B
A

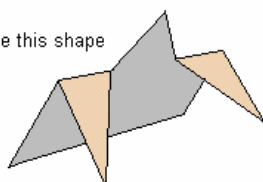



Paint white sides of parts
A ... F grey with felt-pen or
waterpaint.

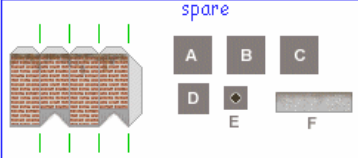
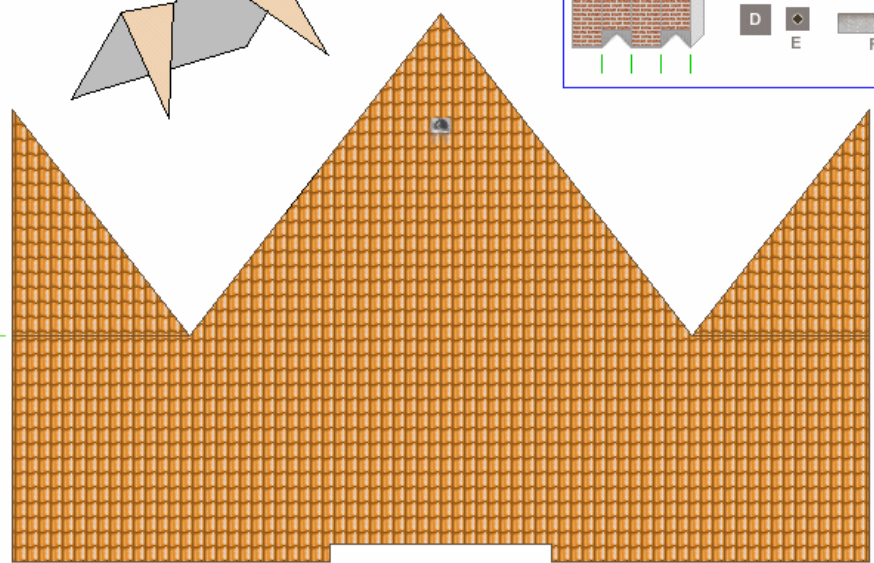
Do not cut out roof until house is finished. Determine exact width after placing part I, J, K and L.

ATTENTION : do not cut out roof until walls are firmly in place !

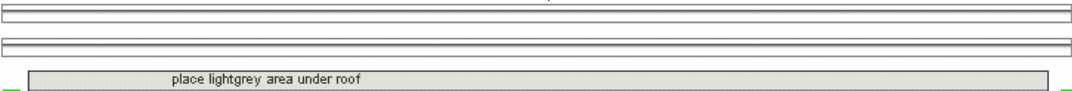
make this shape



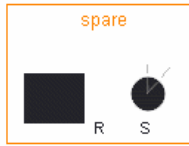
spare

Extra parts Measure and cut to length



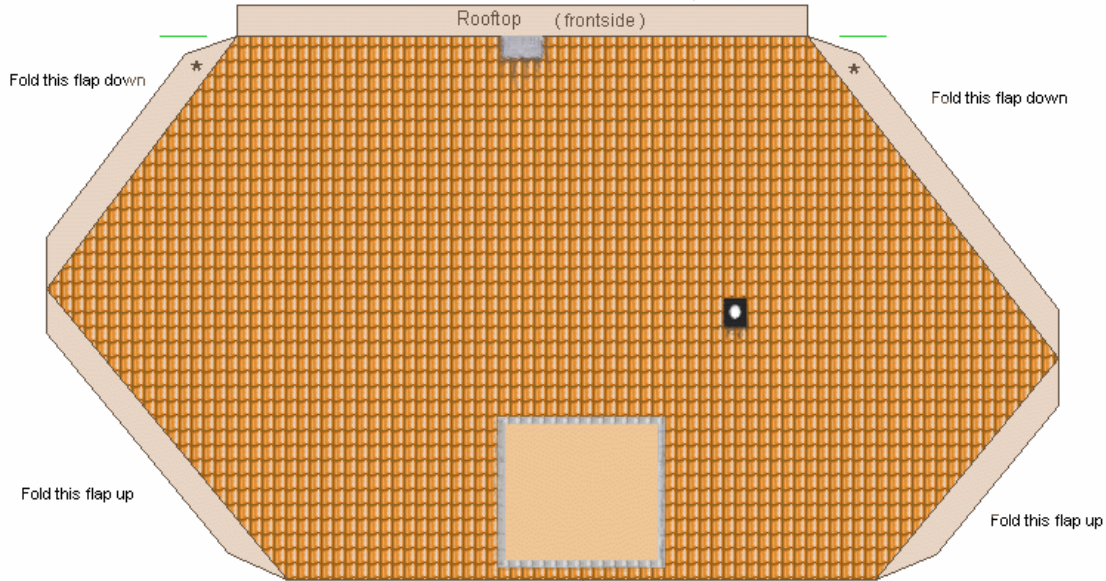
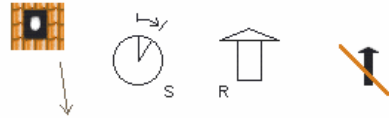
place lightgrey area under roof



Roll-up R solid and glue S on top.
Make S cone shaped.



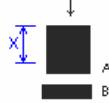
Make oval hole and insert R+S.



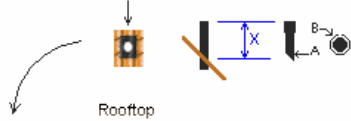
ATTENTION : do not cut out roof until walls are firmly in place !

Small chimney .

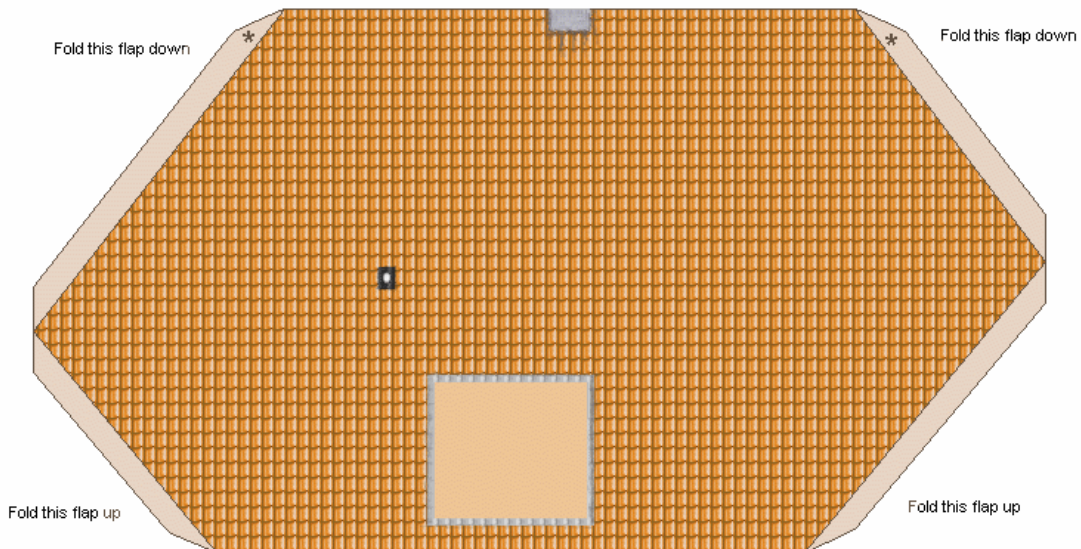
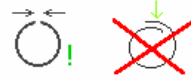
Cut and roll-up solid.



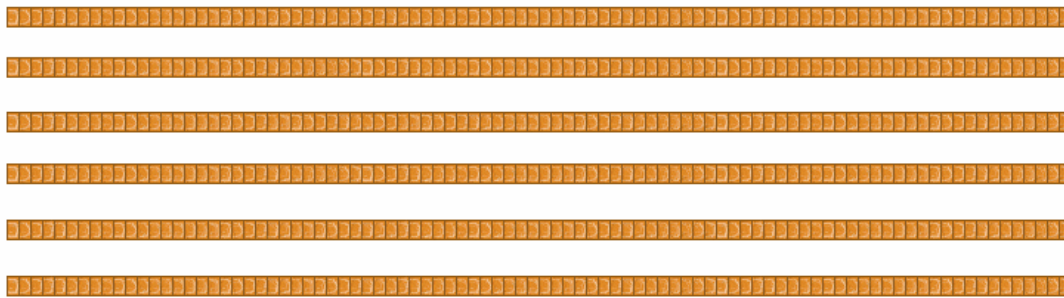
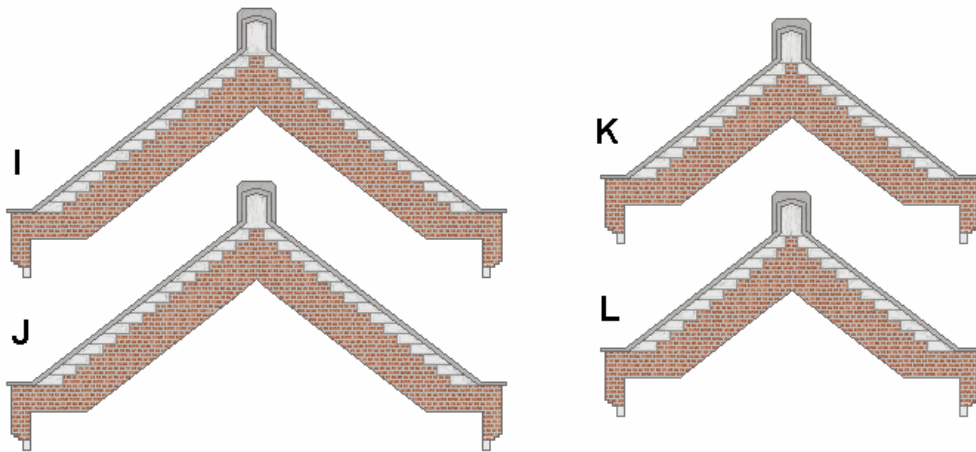
Make a small hole and insert chimney.



Roll B around A, do not overlap B.



ATTENTION : do not cut out roof until walls are firmly in place !



Design and copyright : Fam. Rothuizen, 1913 + 2001 , Goes , Netherlands . Modeldesign and modelcopyrights E. te Groen, Middelburg, Netherlands.

Note from the designer.

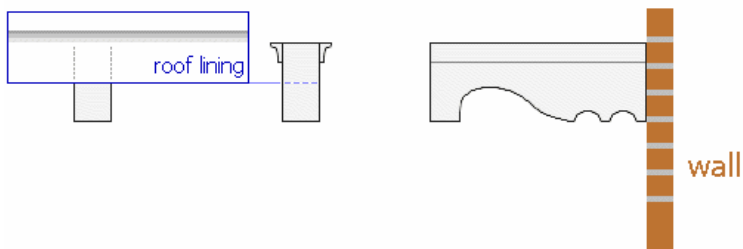
This house has many roof supports.

Even on the large model, and especially on the small one, the roof supports will be too small and too short to be cut out by the builder and still maintain a nice result.

Therefore I advice to leave them away (on the small model)

or to use match sticks, cut to size. They can be painted white, if wanted. Another option is to use white plastic strips, which even can be filed easily into the right shape .

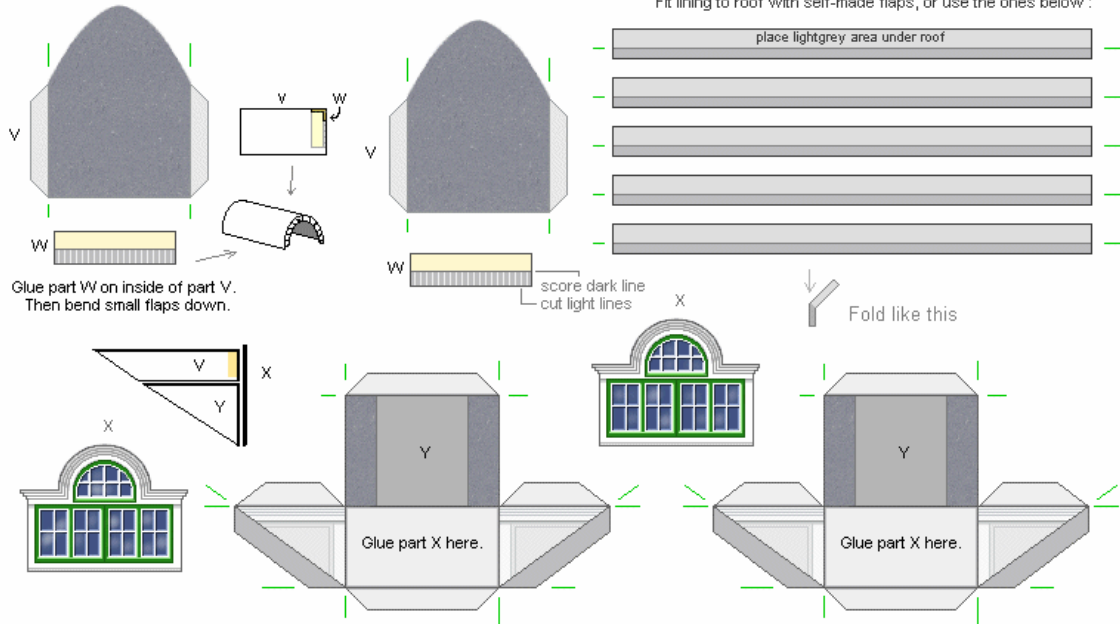
The lighter areas mark the spot where the supports are mounted.



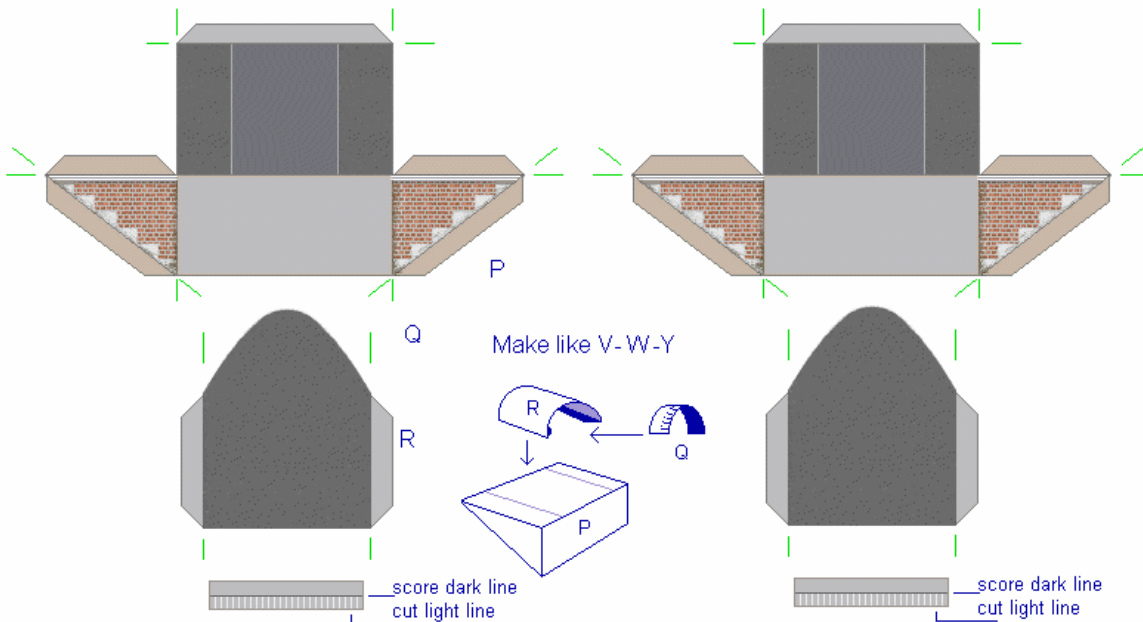
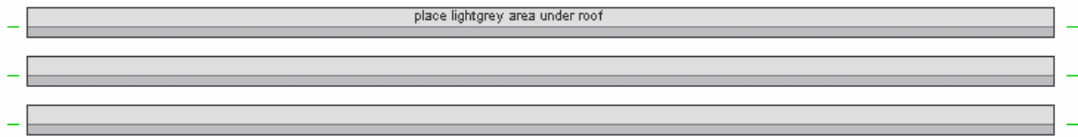
Roof lining. After finishing the house and roofs, measure and cut to size.



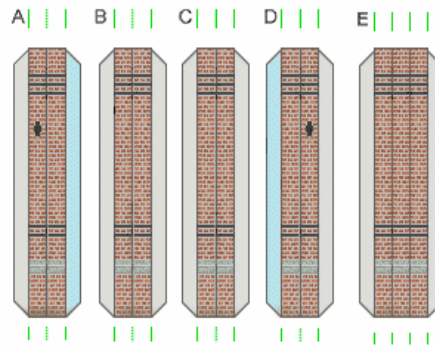
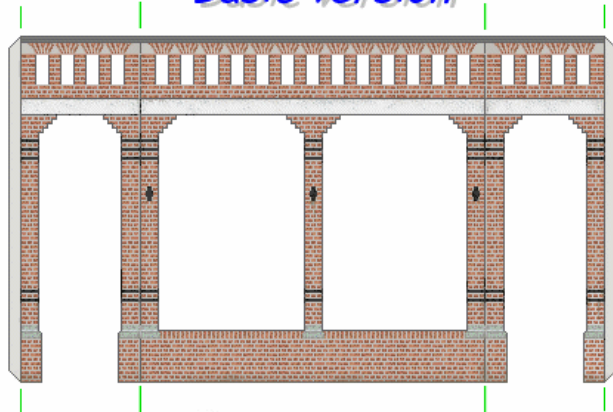
Fit lining to roof with self-made flaps, or use the ones below :



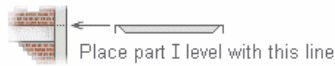
Use these flaps to glue roofing to roof. Cut to needed length.



Basic version



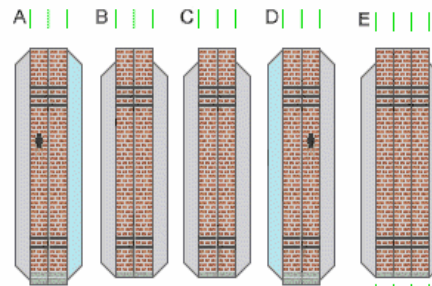
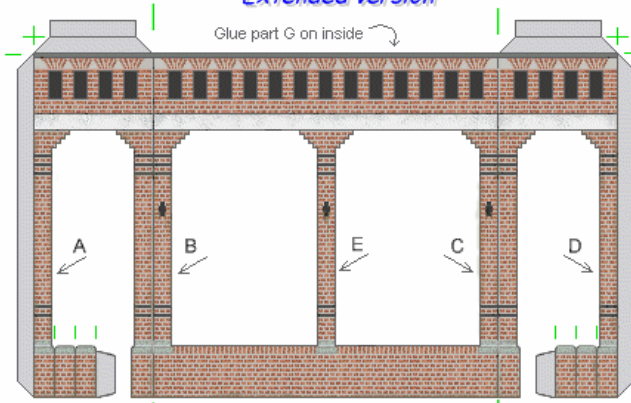
Glue grey flaps onto balcony, lightblue flaps onto the house.



When building the balcony, part I is necessary.
Other parts are optional. Add A-B-C-D and E if wanted.

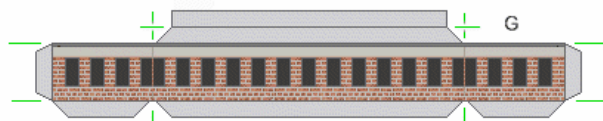


Extended version

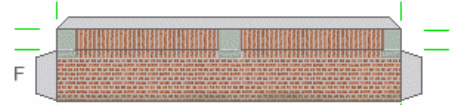
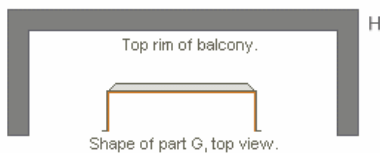


Glue grey flaps onto balcony, lightblue flaps onto the house.

First glue parts A and D into place, then fold lower parts around.



Fold part G with ink up and place on inside of balcony.
Fold grey flaps backwards.



Glue part I at this height,
but first cut out part G to determine exact position.

