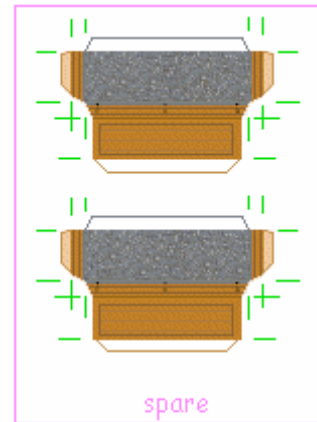
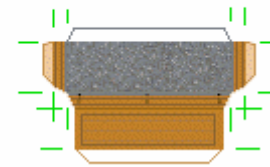
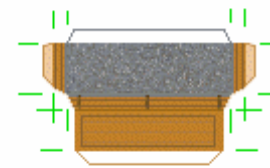




Middle front façade



Place above door. Please check example and pictures for exact placement.

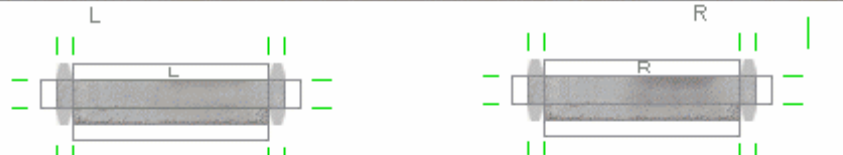


spare

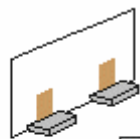
Make this shape :



( front view )



Place small grey steps at bottom of both doors, if wanted.



Make your own "sign", or "plate". Or just glue a piece of wall in place.

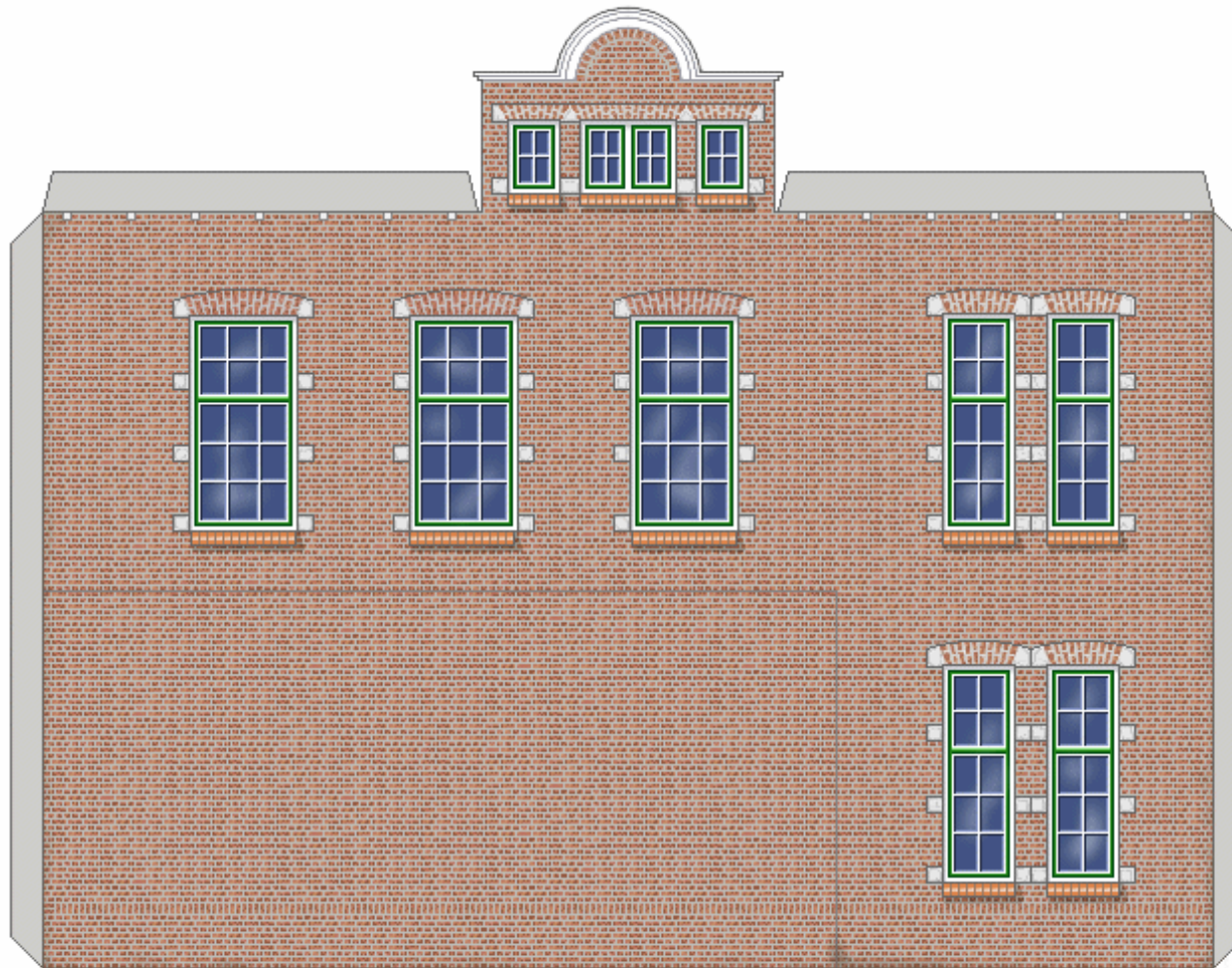


Left façade, with balcony.

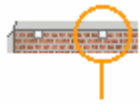
Design and copyright : Fam. Rothuizen, 1913 + 2001, Goes, Netherlands. Modeldesign and modelcopyrights E. te Groen, Middelburg, Netherlands.



Right façade

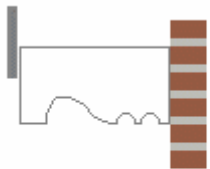


Right façade



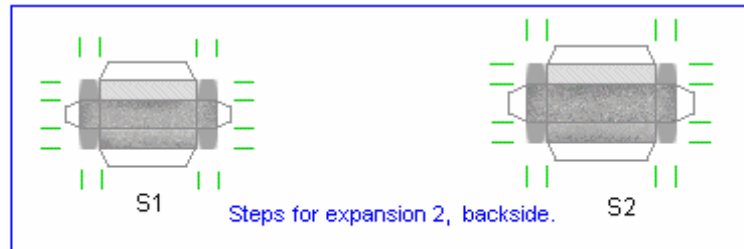
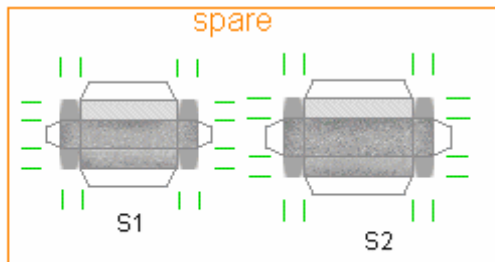
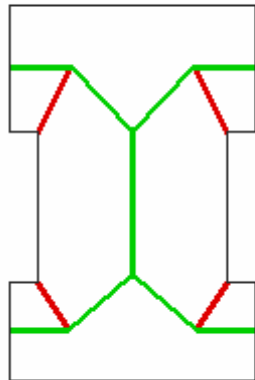
Squares show where supports are placed, not their actual size!

Here, the supports are 3 bricks high, plus cement.



Notes about the roof.

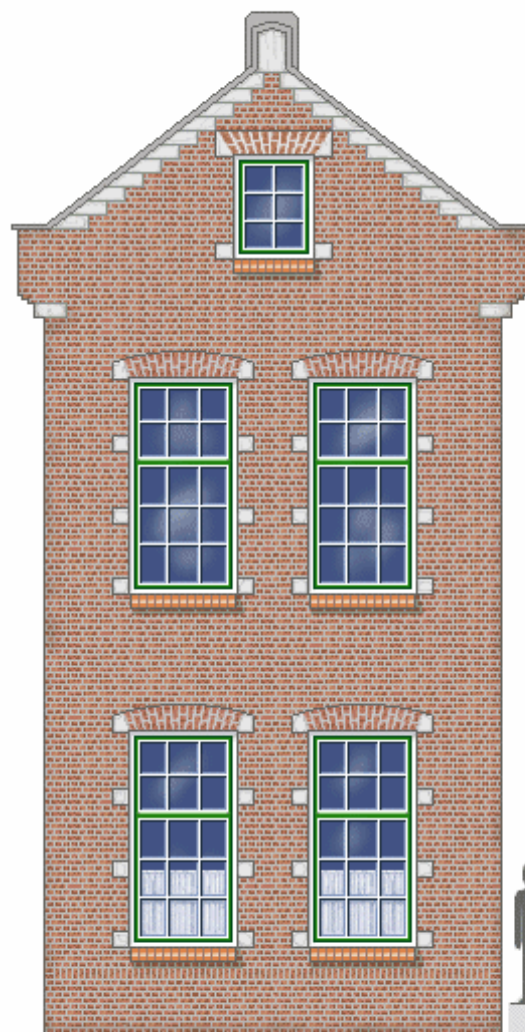
Green marked areas is where the rooftops come.  
Areas with red line have NO tiles, so glue carefully. Don't let glue show here.





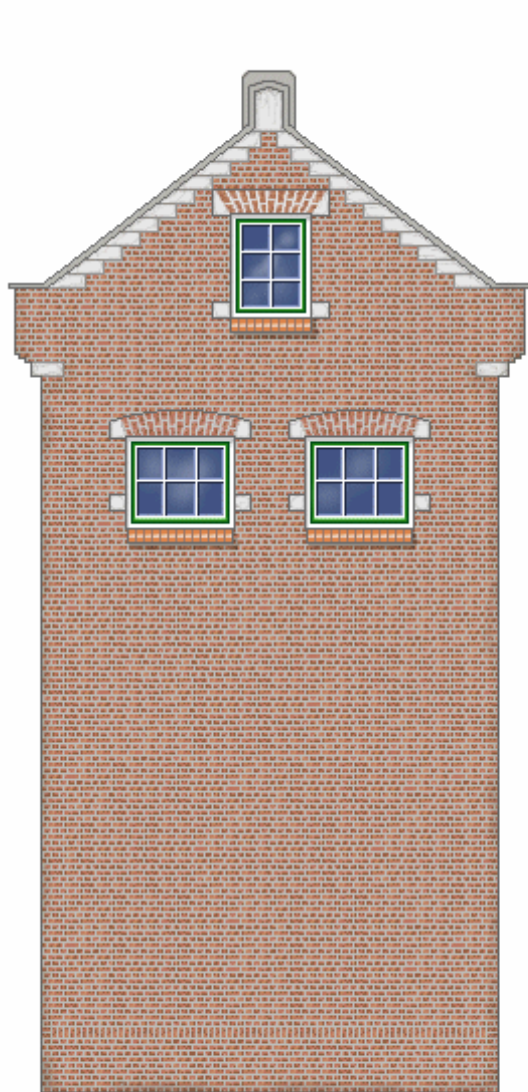


Left front façade



Right front façade

Design and copyright : Fam. Rothuizen, 1913 + 2001, Goes, Netherlands. Modeldesign and modelcopyrights E. te Groen, Middelburg, Netherlands.



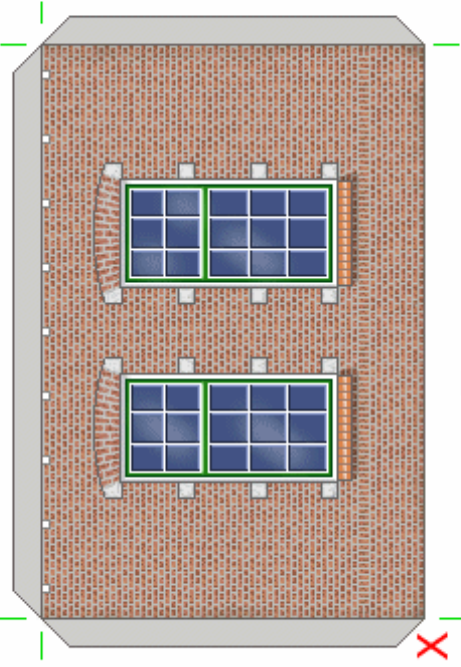
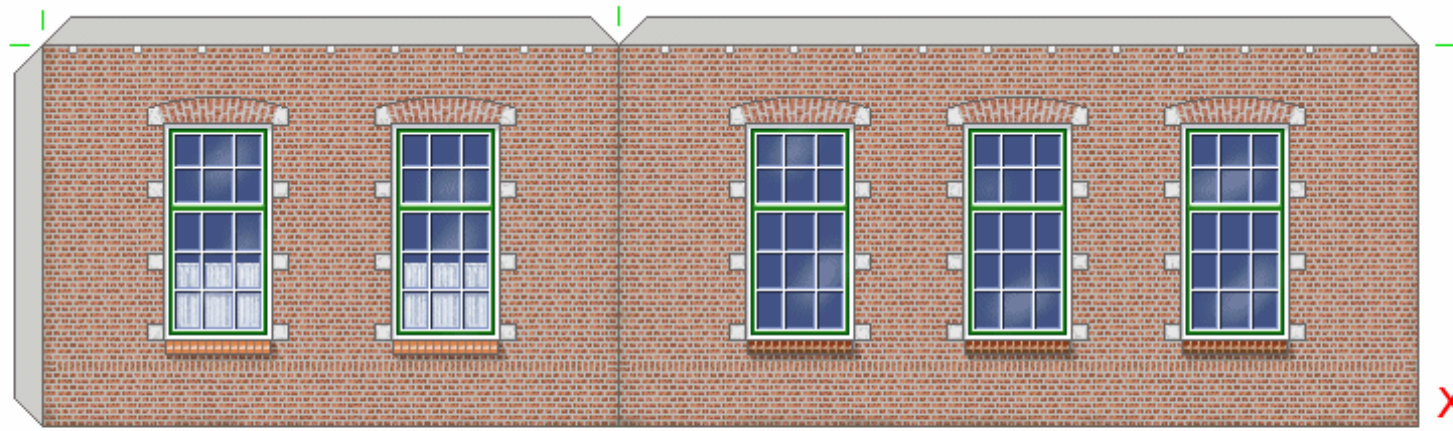
Right rear façade



Left rear façade

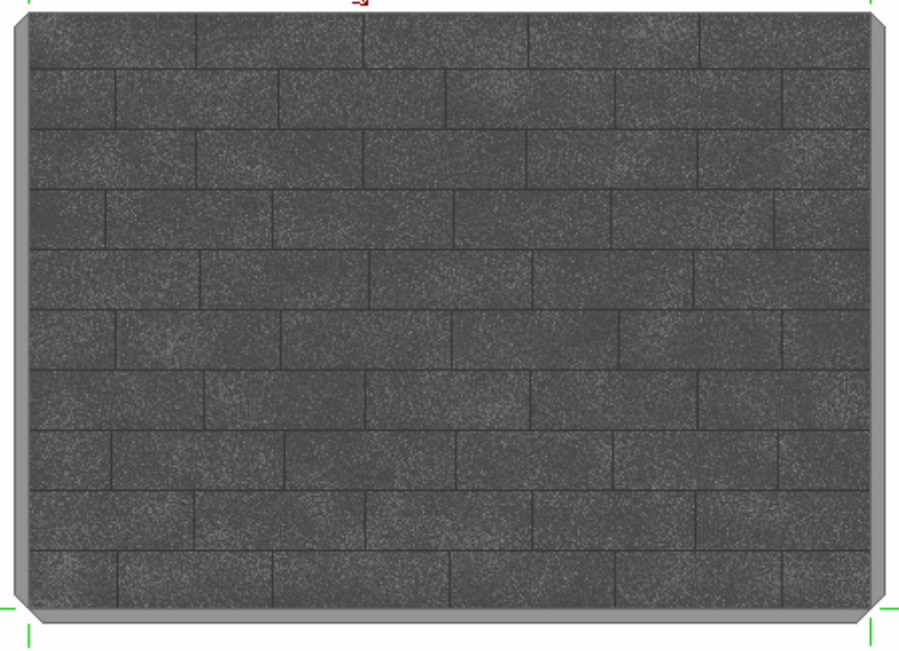
Design and copyright : Fam. Rothuizen, 1913 + 2001, Goes, Netherlands. Modeldesign and modelcopyrights E. te Groen, Middelburg, Netherlands.

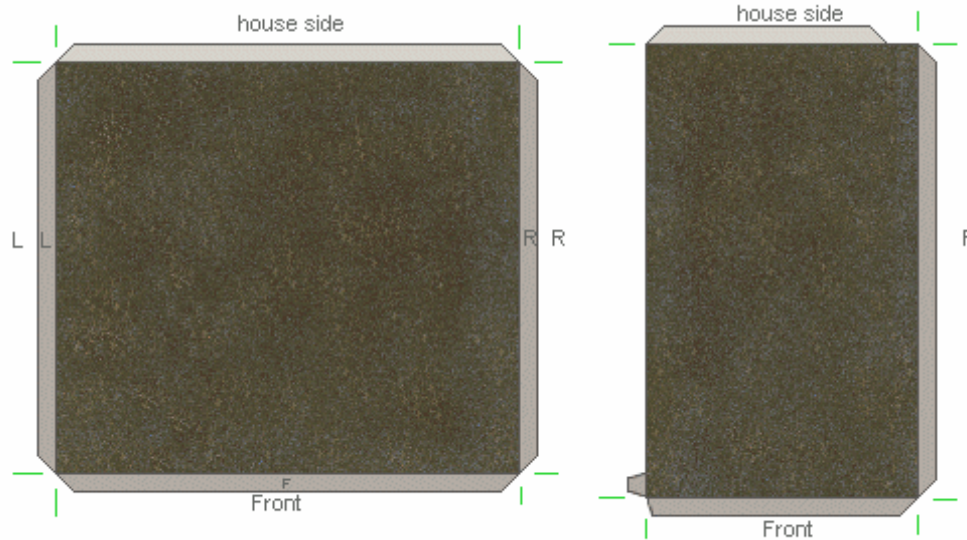
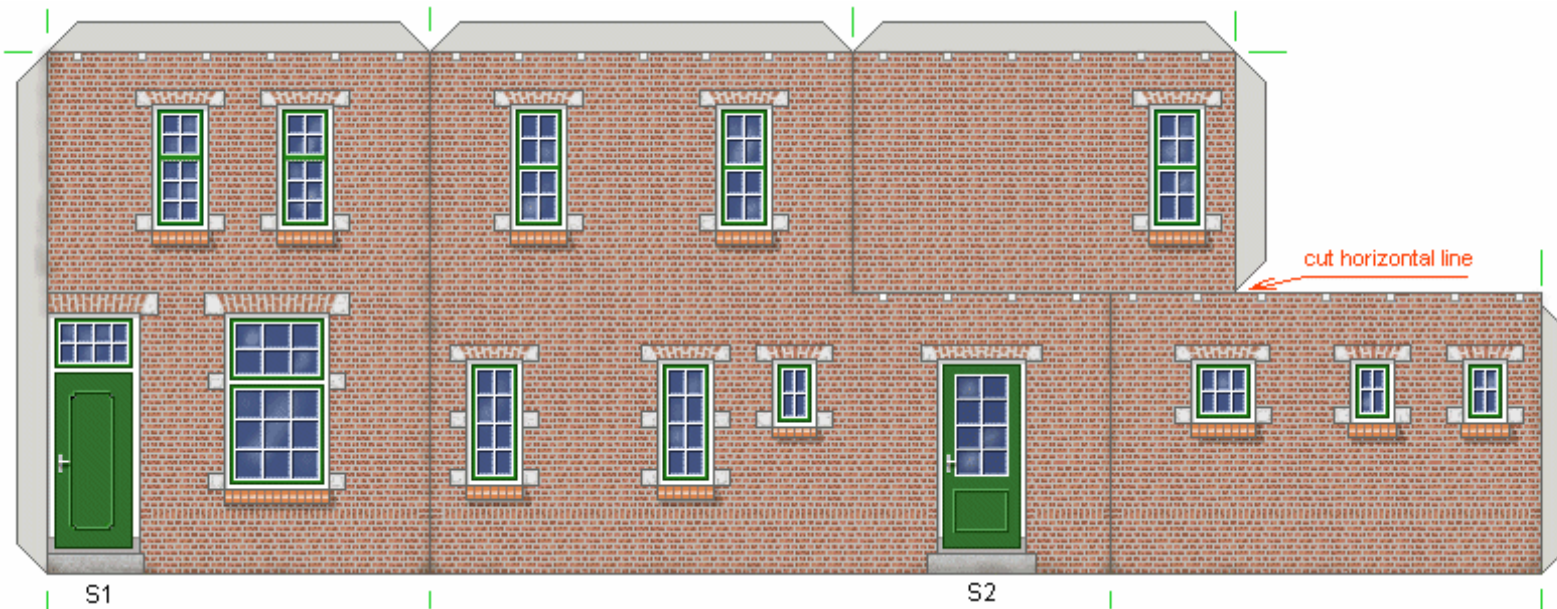




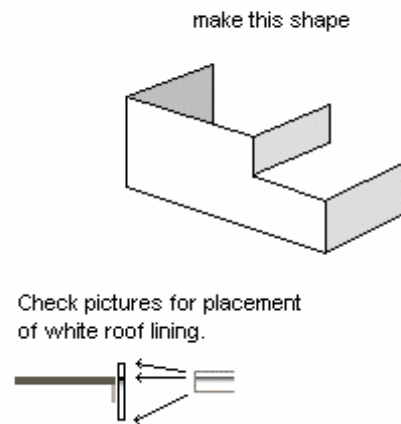
Expansion 1

Please make your own flap. Cut straight and make sure roof lines up nicely against wall.



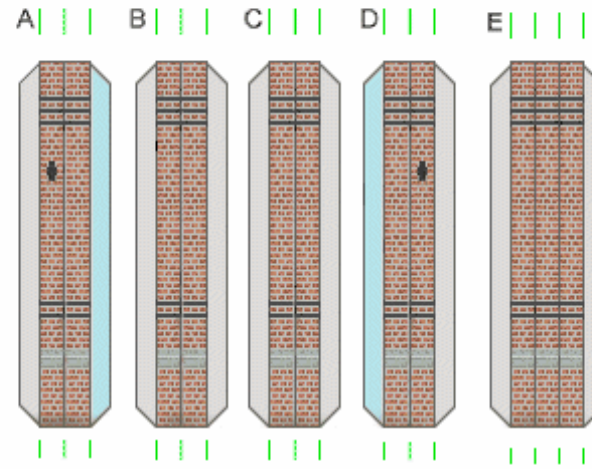
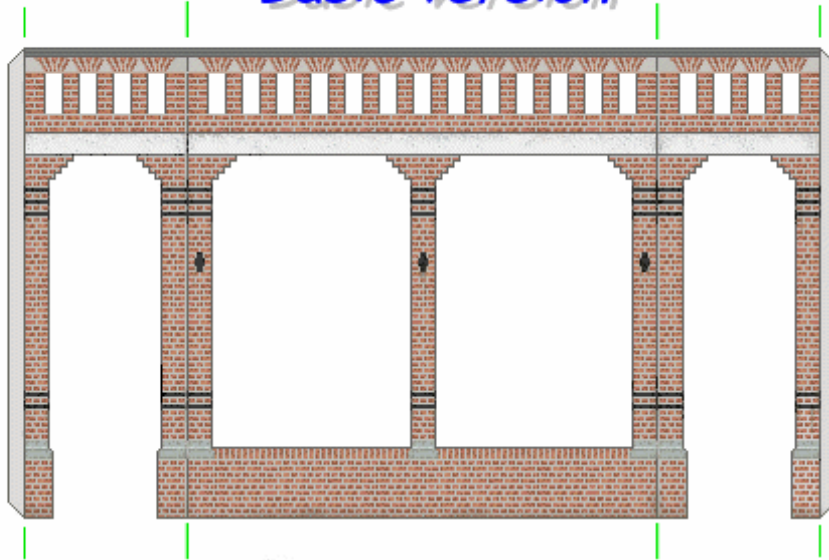


**Expansion 2, backside.**

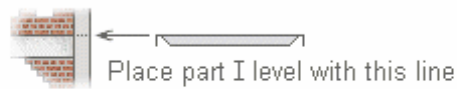




# Basic version

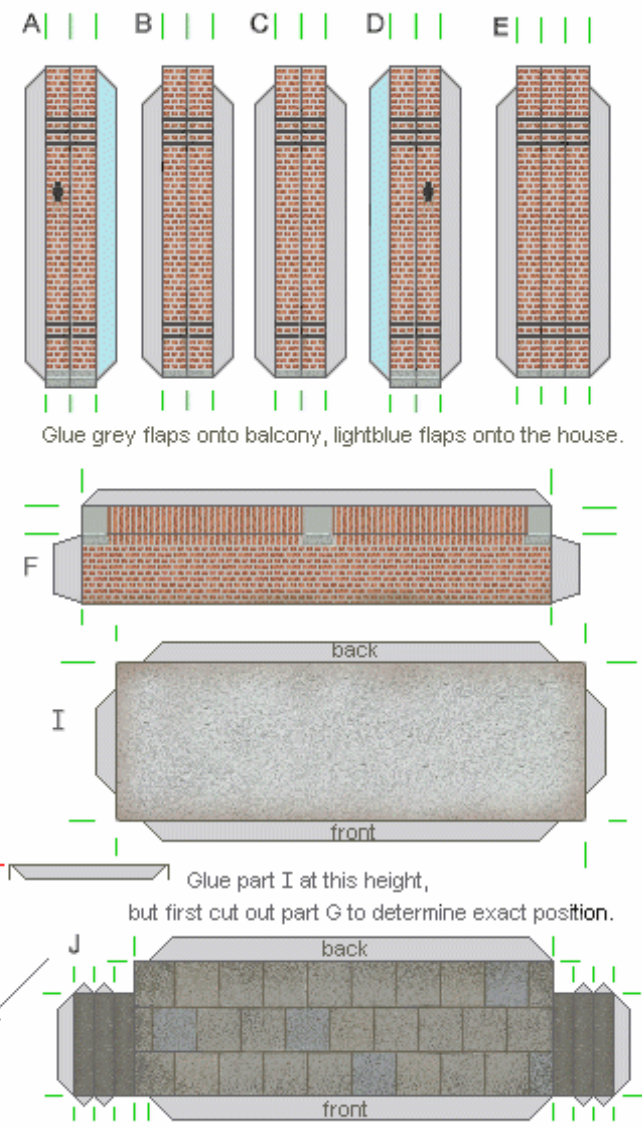
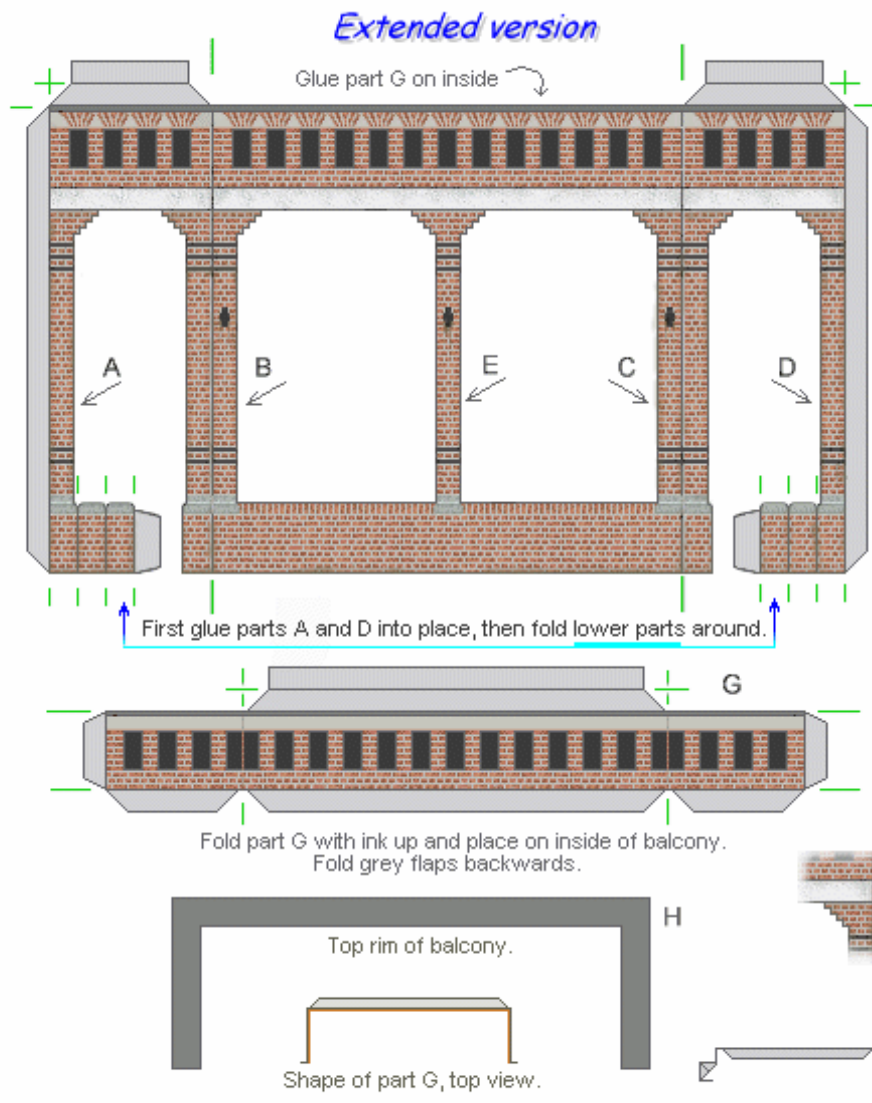


Glue grey flaps onto balcony, lightblue flaps onto the house.



When building the balcony, part I is necessary.  
Other parts are optional. Add A-B-C-D and E if wanted.



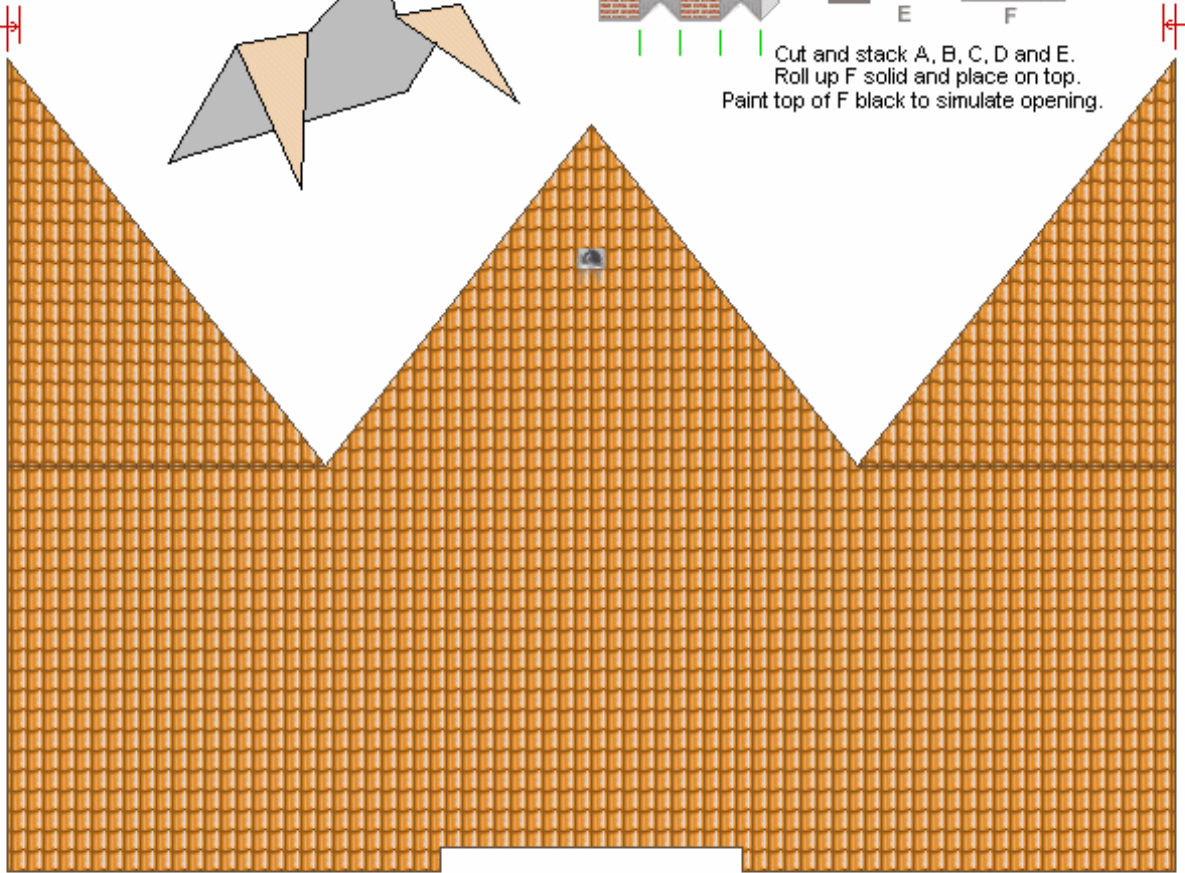


Design and copyright : Fam. Rothuizen, 1913 + 2001, Goes, Netherlands. Modeldesign and modelcopyrights E. te Groen, Middelburg, Netherlands.

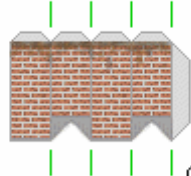


Design and copyright : Fam. Rothuizen, 1913 + 2001 , Goes, Netherlands. Modeldesign and modelcopyrights E. te Groen, Middelburg, Netherlands.

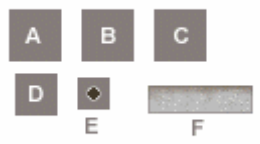
make this shape




Cut and stack A, B, C, D and E.  
Roll up F solid and place on top.  
Paint top of F black to simulate opening.



A B C  
D E F



F  
E  
D  
C  
B  
A

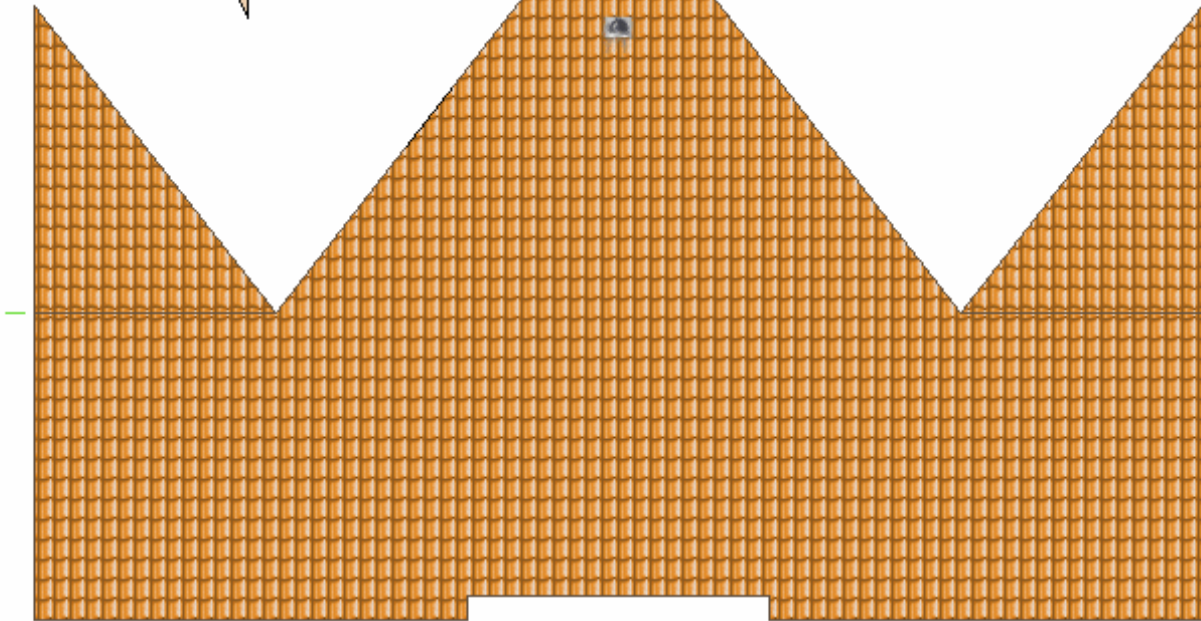
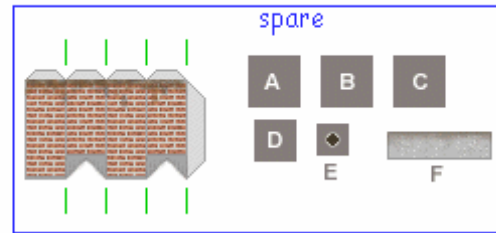
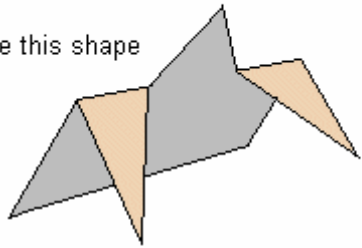


Paint white sides of parts  
A ... F grey with felt-pen or  
waterpaint.

? ?  
Do not cut out roof until house is finished. Determine exact width after placing part I, J, K and L.

ATTENTION : do not cut out roof until walls are firmly in place !

make this shape



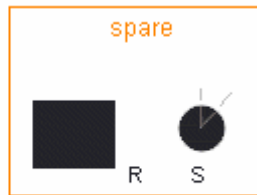
Extra parts

Measure and cut to length



Design and copyright : Fam. Rothuizen, 1913 + 2001 , Goes, Netherlands. Modeldesign and modelcopyrights E. te Groen, Middelburg, Netherlands.

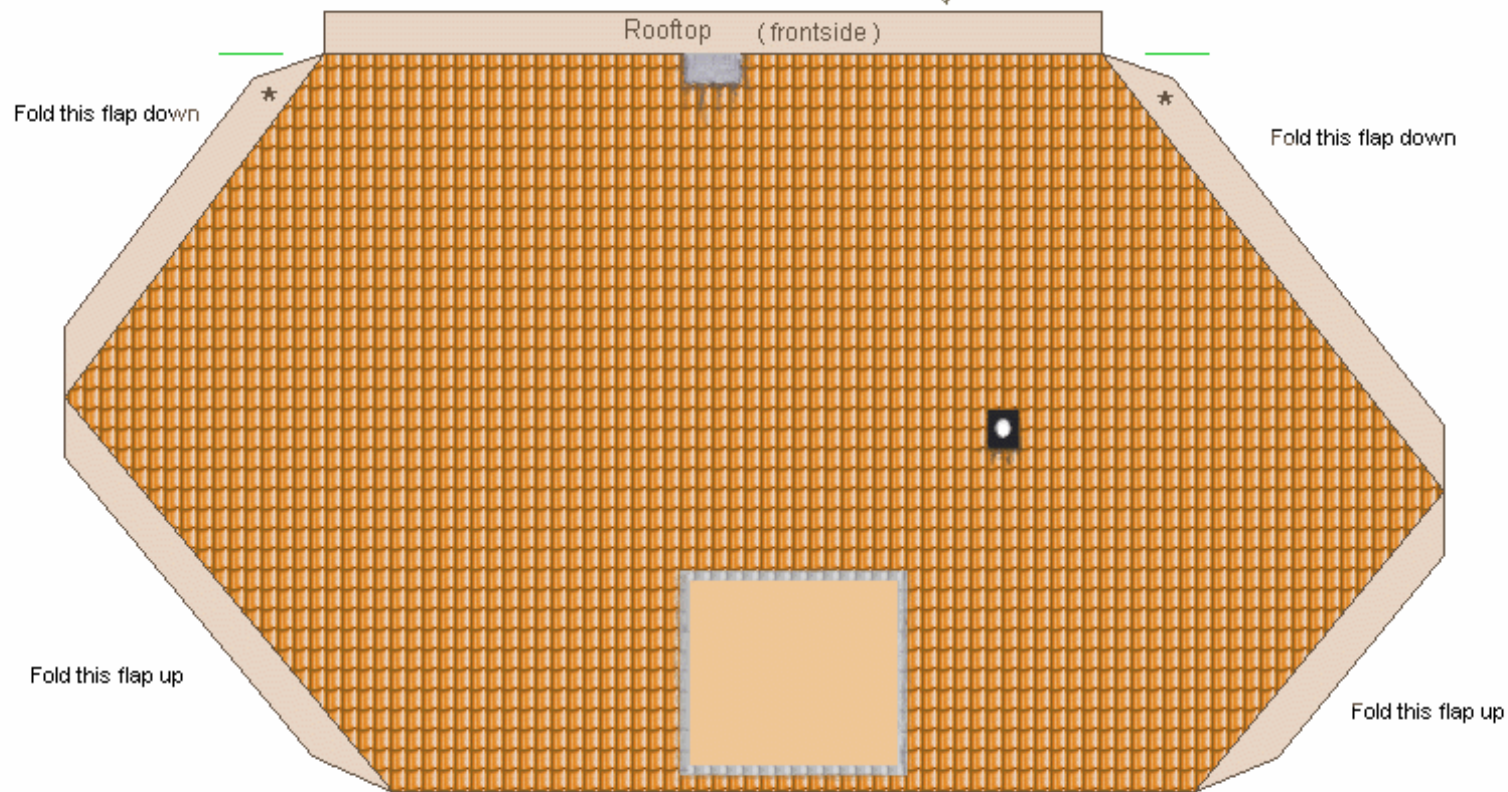
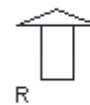




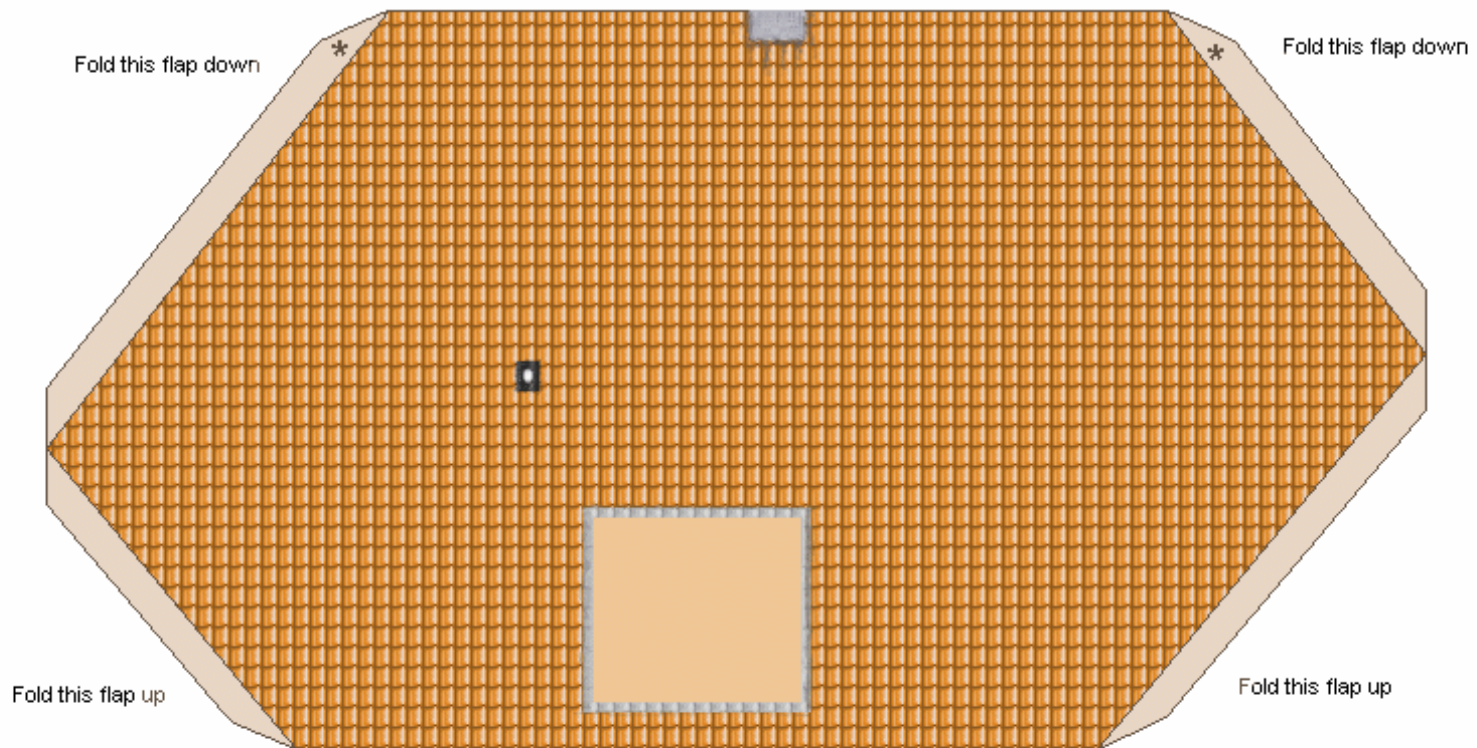
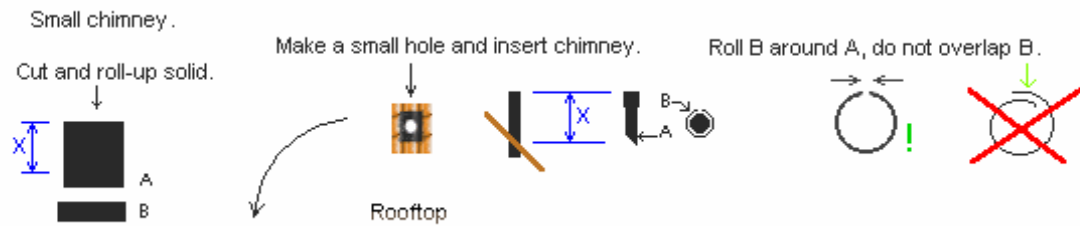
Roll-up R solid and glue S on top.  
Make S cone shaped.



Make oval hole and insert R+S.

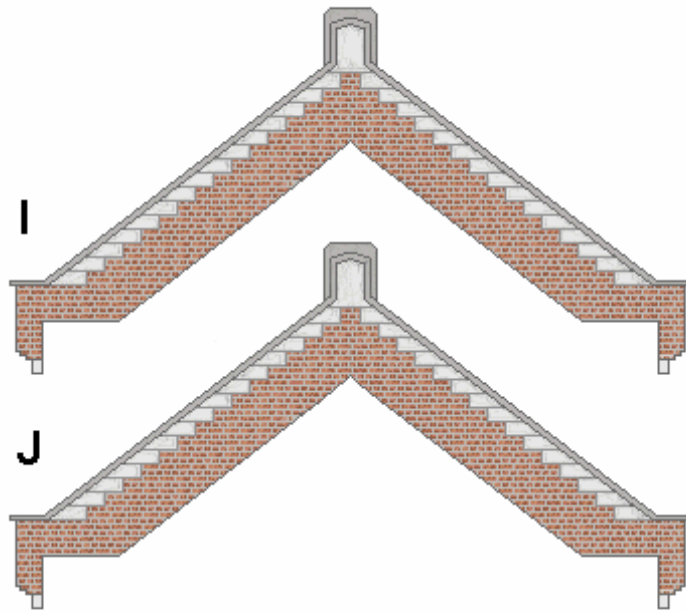


ATTENTION : do not cut out roof until walls are firmly in place !

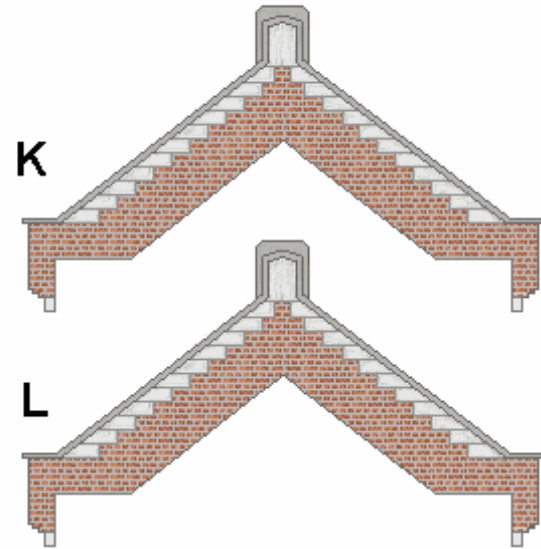


**ATTENTION : do not cut out roof until walls are firmly in place !**

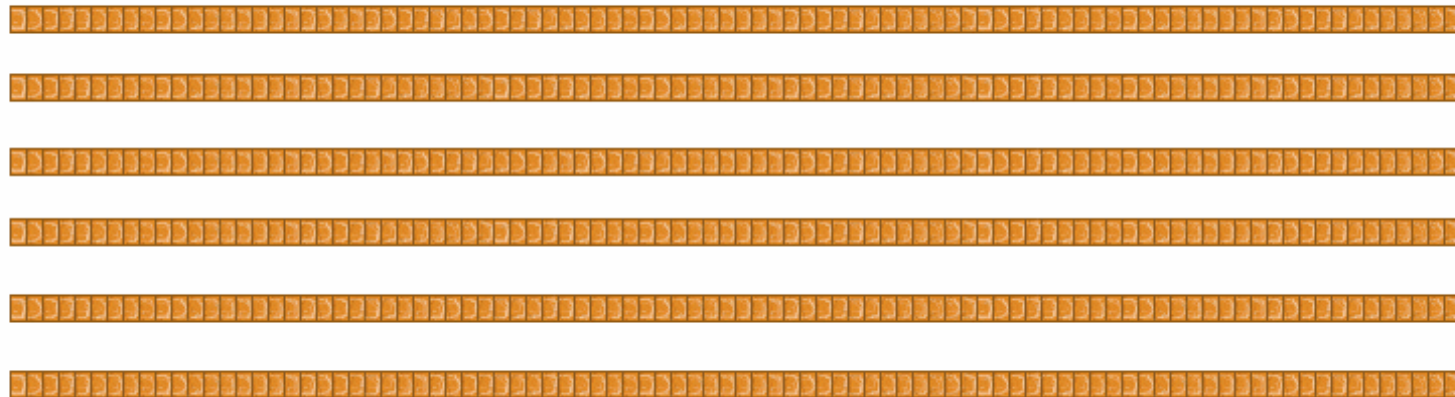




Rooftops.



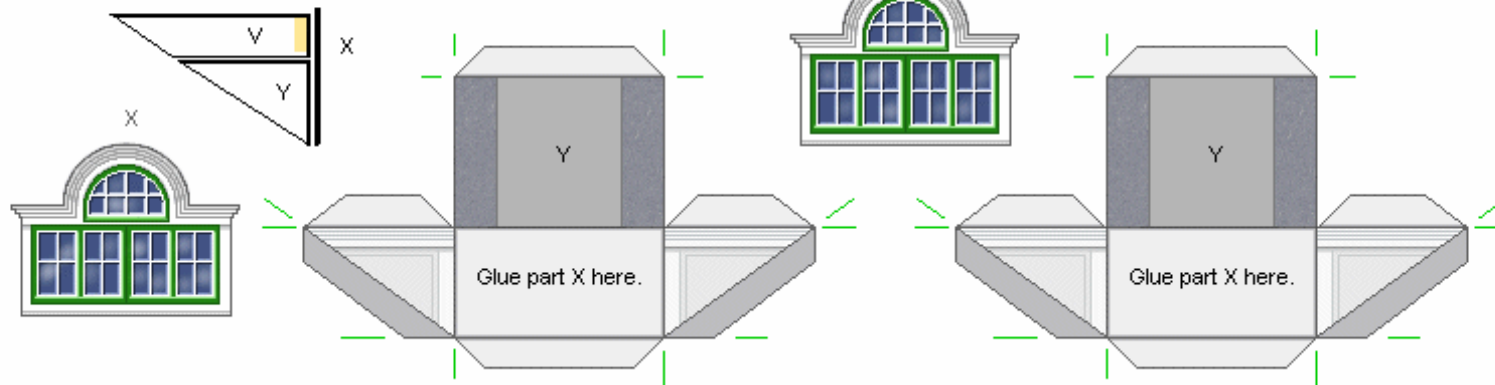
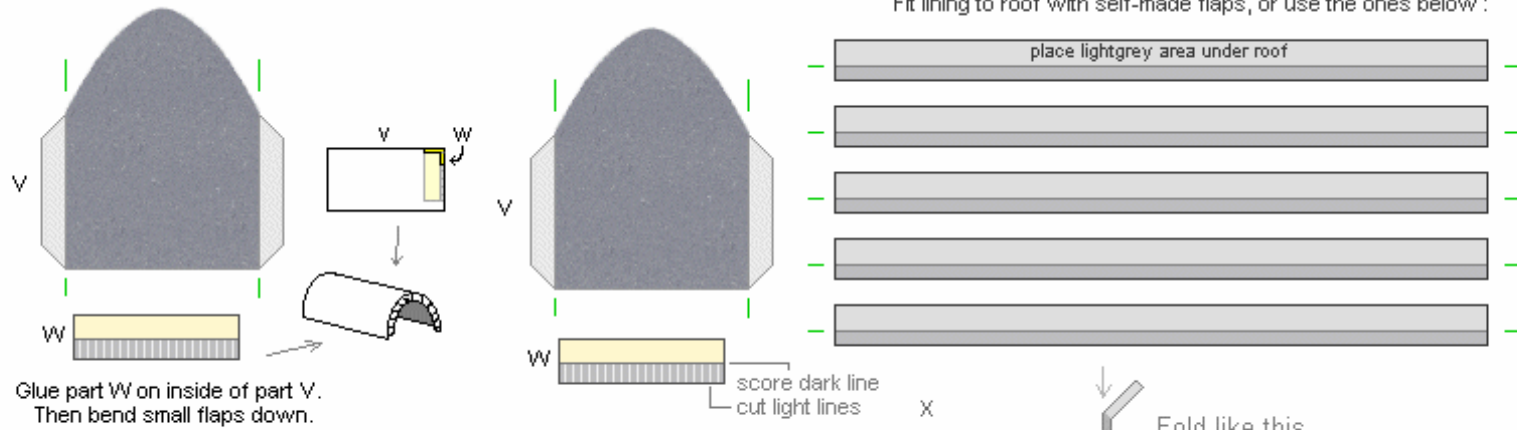
Make half round 



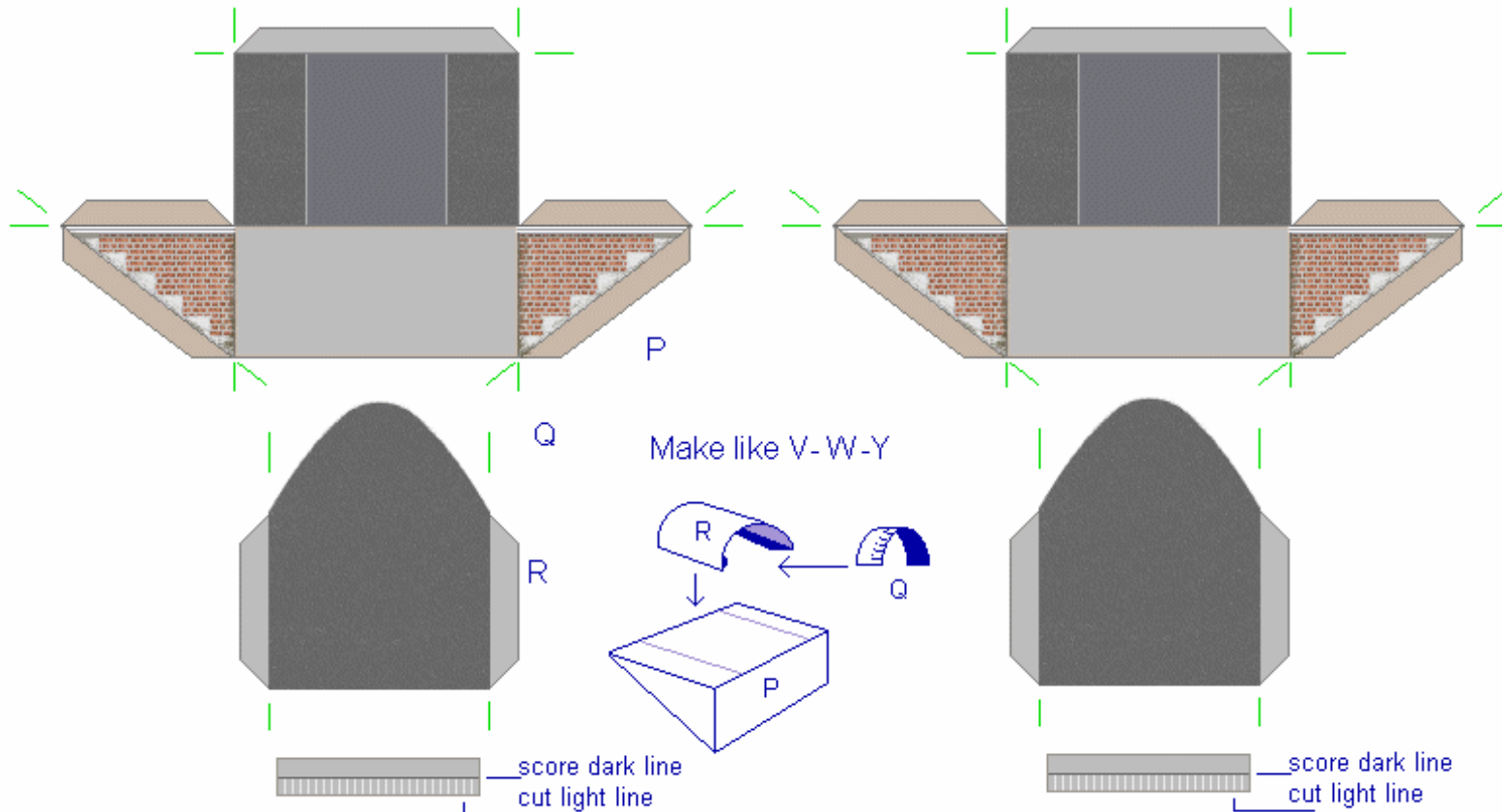
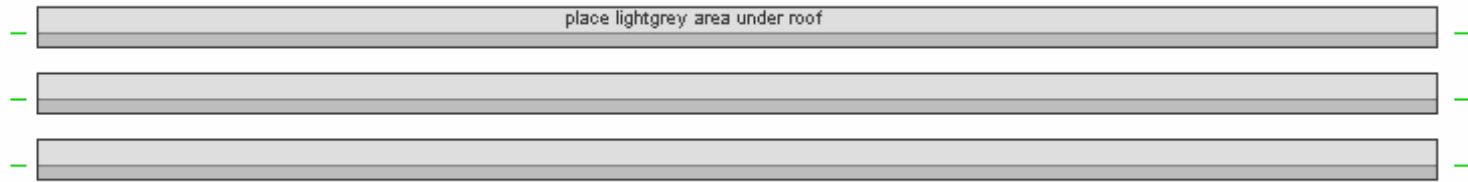
Roof lining. After finishing the house and roofs, measure and cut to size.



Fit lining to roof with self-made flaps, or use the ones below :



Use these flaps to glue roofing to roof. Cut to needed length.



Design and copyright : Fam. Rothuizen, 1913 + 2001, Goes, Netherlands. Modeldesign and modelcopyrights E. te Groen, Middelburg, Netherlands.