

# CASA UNIFAMILIAR

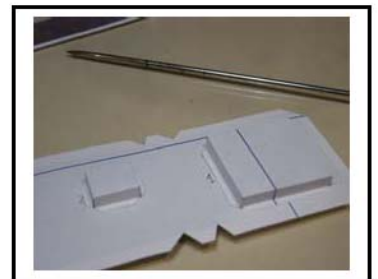
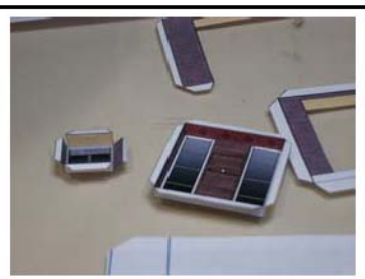
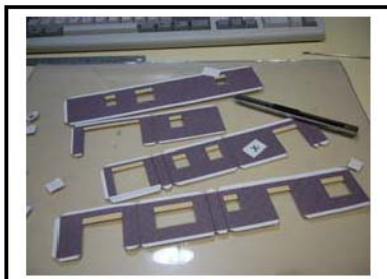


## Instrucciones de montaje

- 1- Cortar y pegar por debajo con cinta adhesiva la base 1 y 2



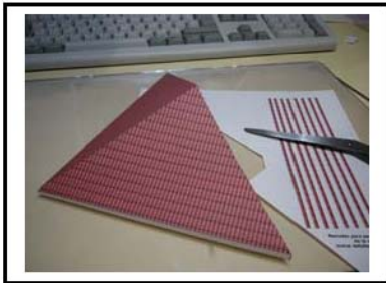
- 2- Recortar Paredes y enganchar ventanas por detrás



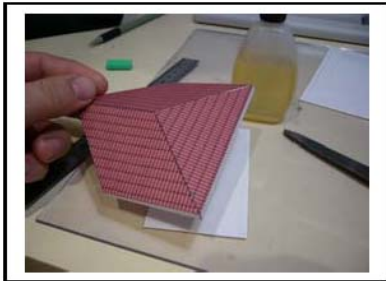
3-Enganchar, todos los desarrollos de las paredes y pegarlos en la base



4-Montar cubierta y pegarla en base de cubierta



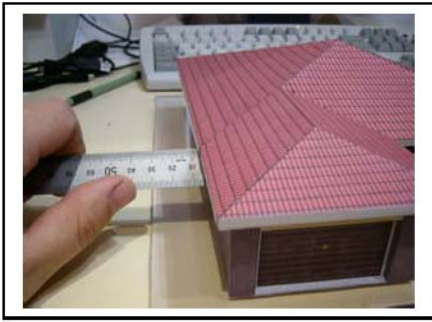
5- montar cubierta pequeña y pegarla en cubierta grande



6- Montar el escalón de entrada



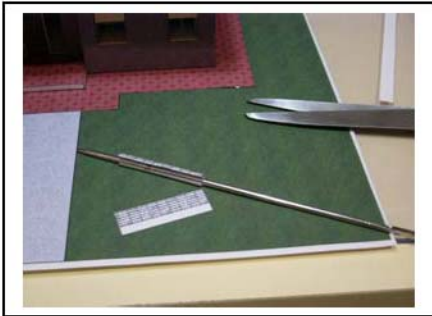
7- Centrar la cubierta en la casa y pegarla



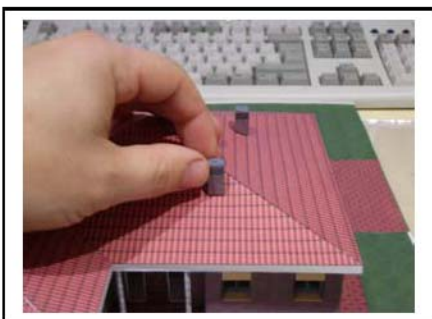
8- cortar y pegar jardín 1 y 2 y pegar la casa encima



9- cortar, enrollar y pegar las columnas de la entrada

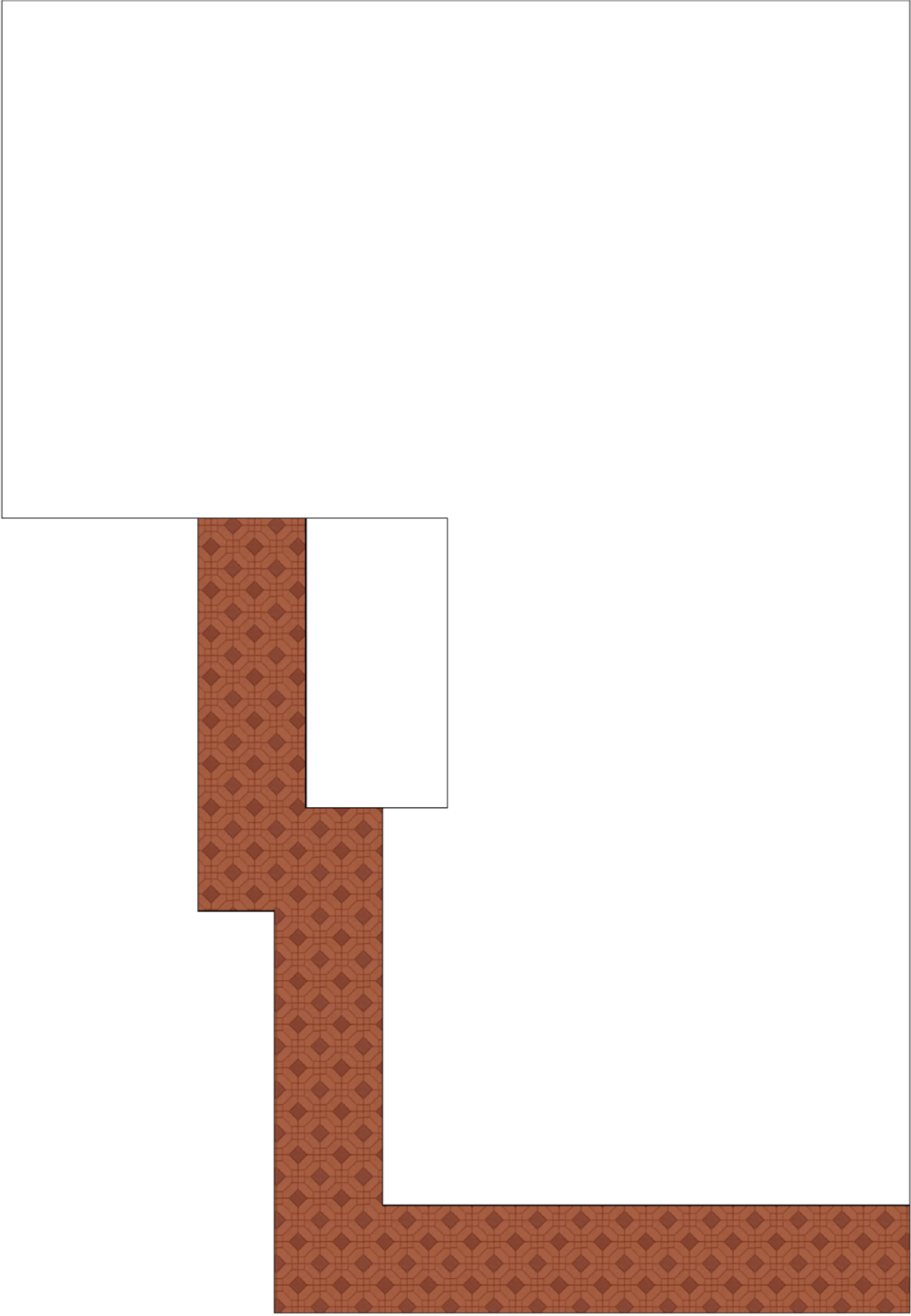


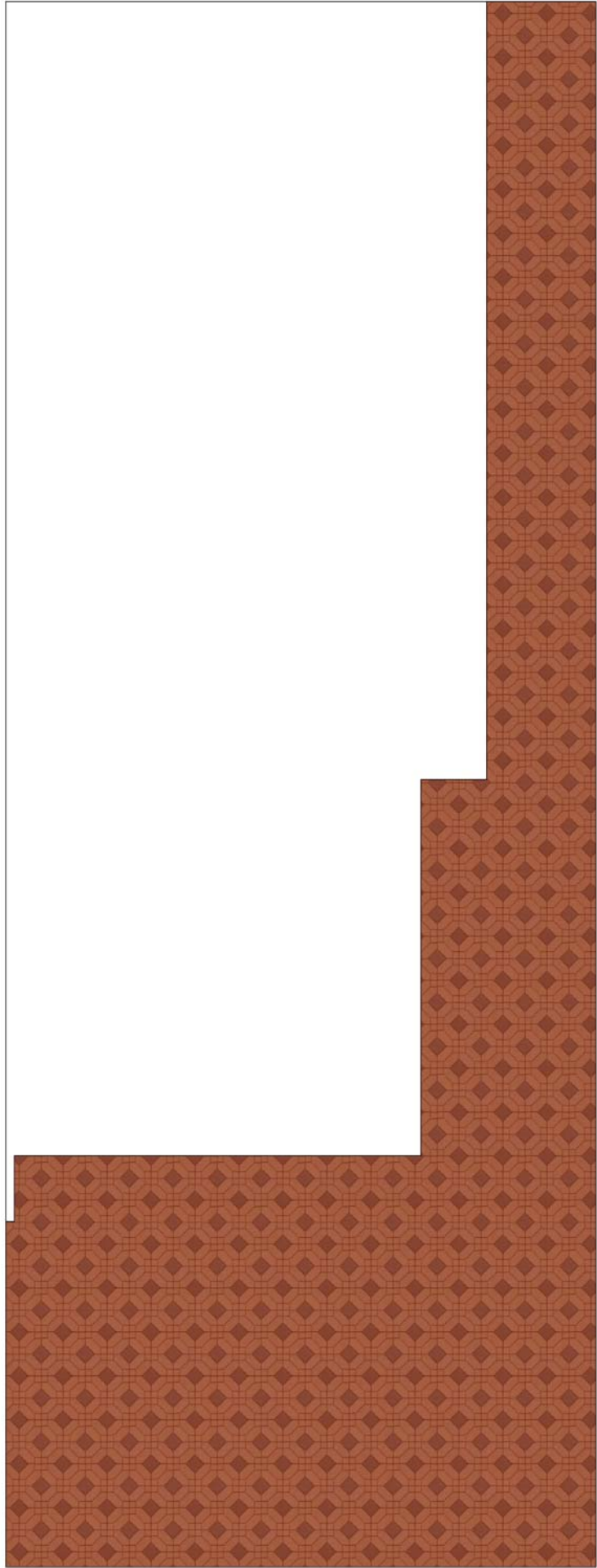
10- Montar y pegar chimeneas, y acabar pegando los remates del techo.

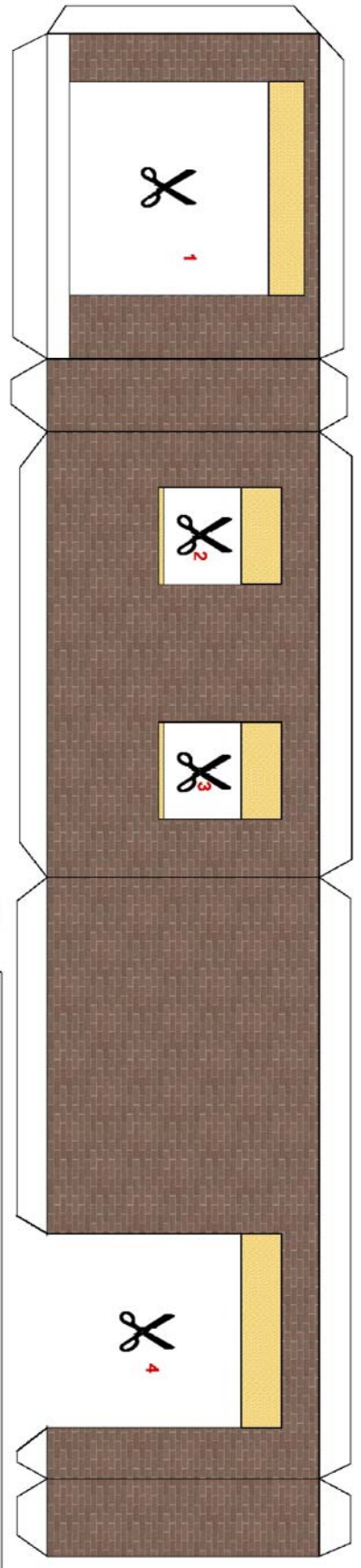
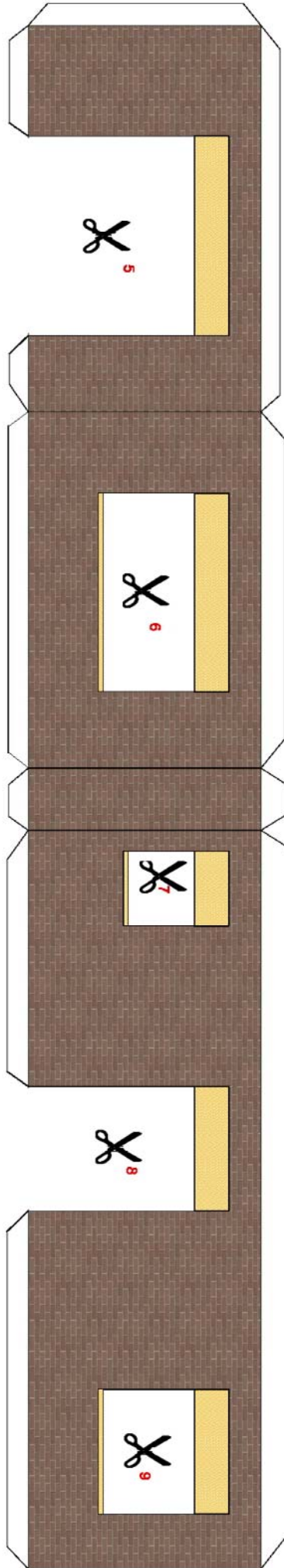
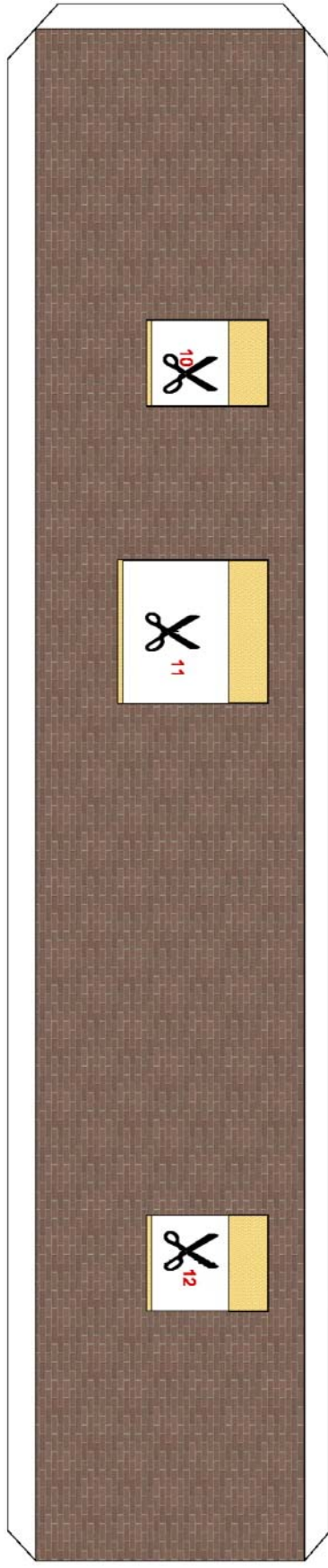
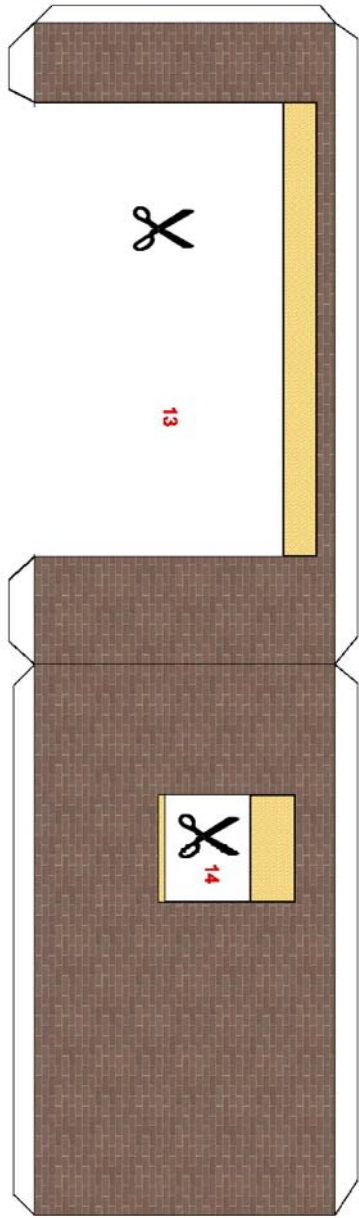


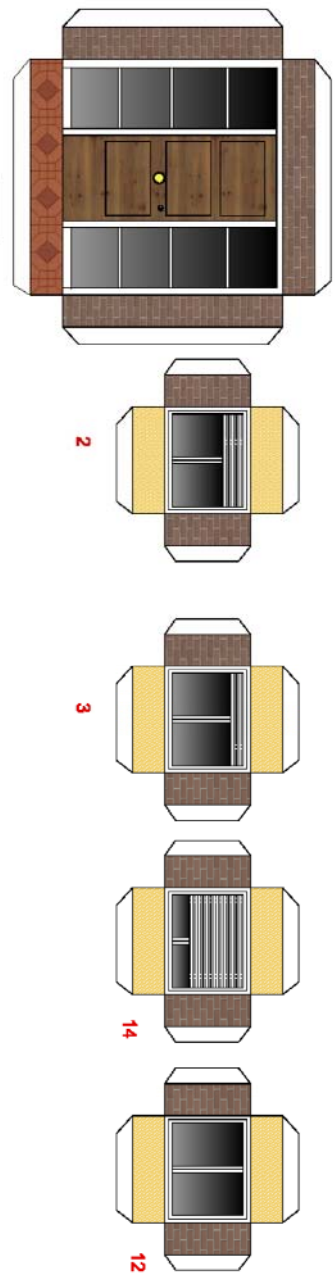
Esta maqueta ha sido diseñada por Toni Mauricio, prohibida su comercialización, libre difusión

[WWW.maquetasdepapel.com](http://WWW.maquetasdepapel.com) 29/11/2003

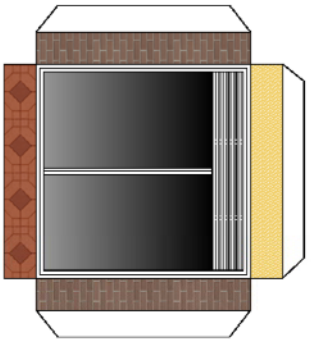




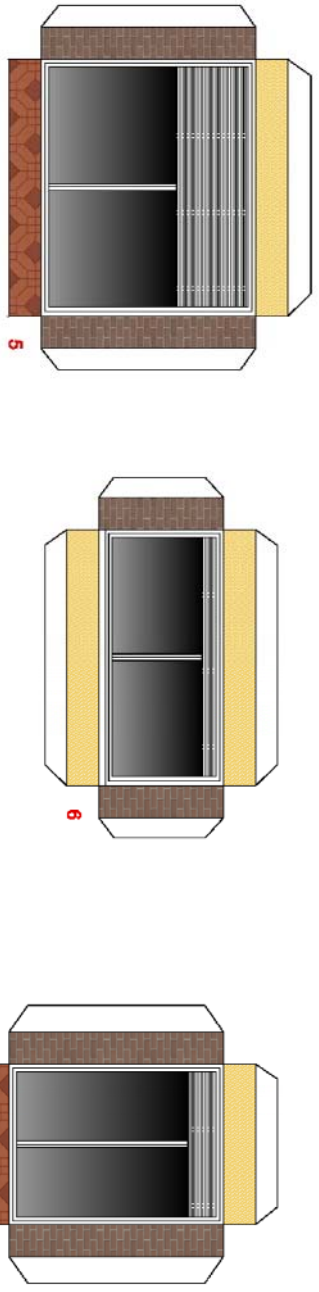




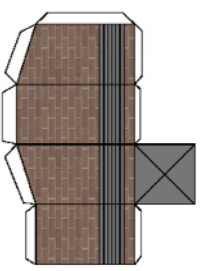
chimenea cocina



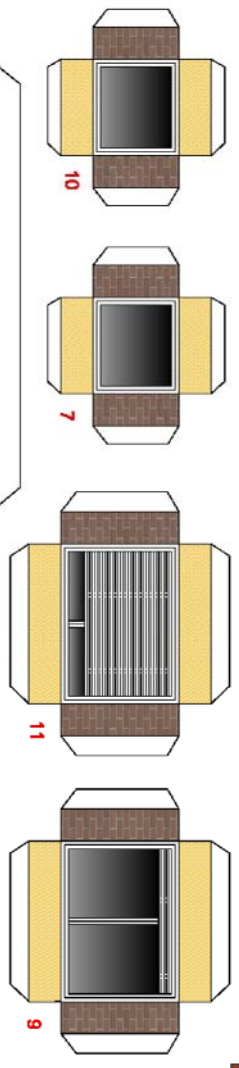
4



5



6

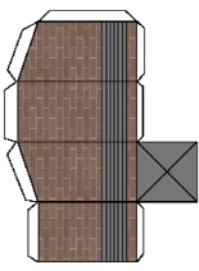


7

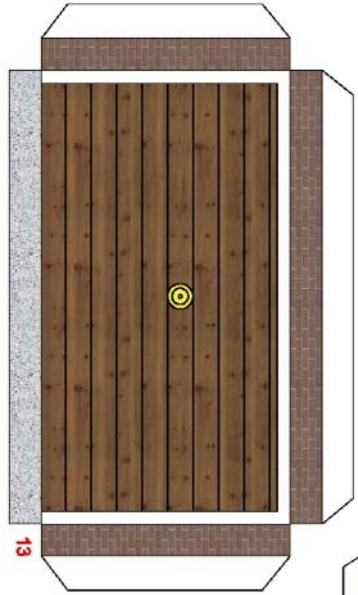
10

11

14



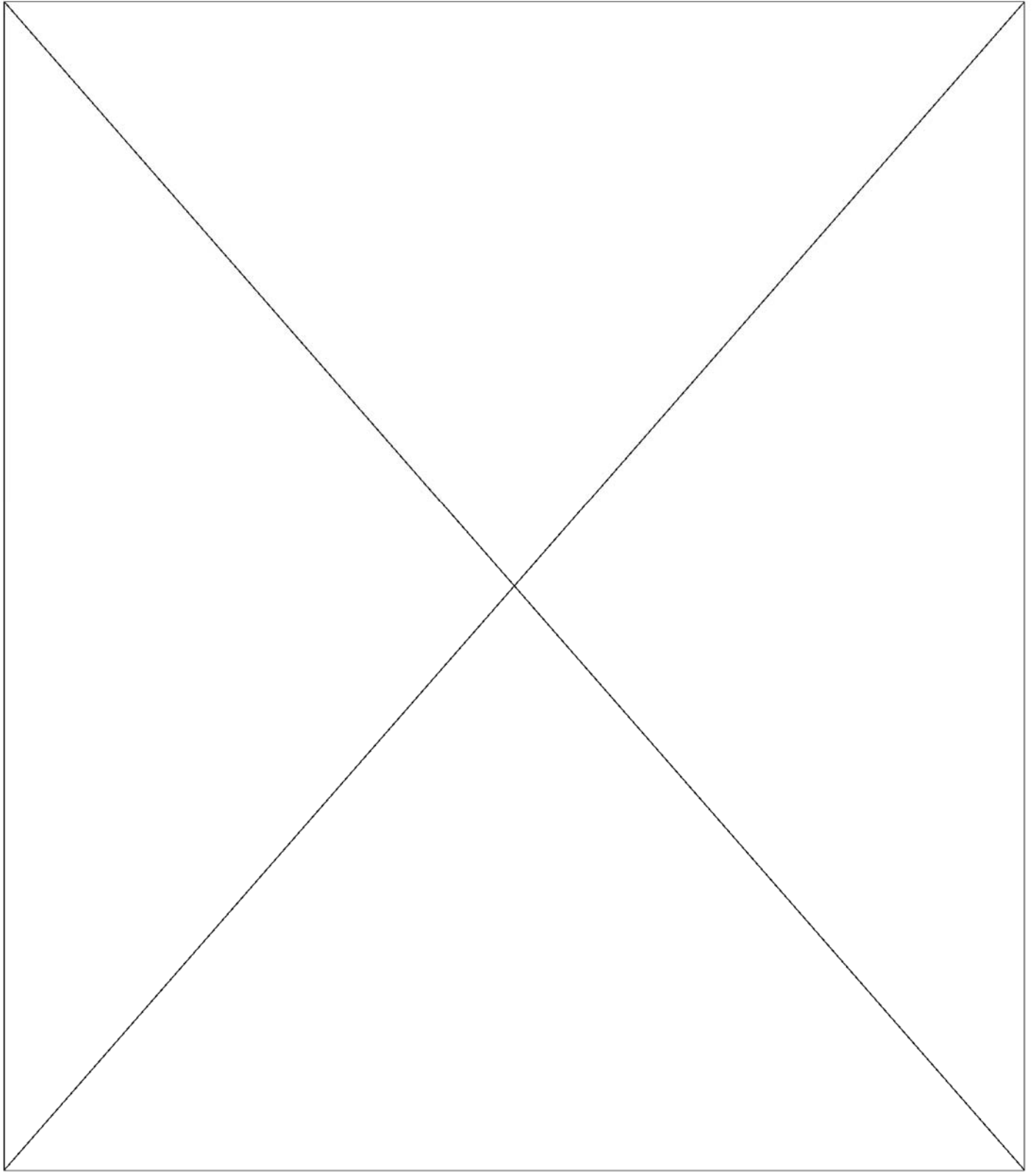
chimenea comedor



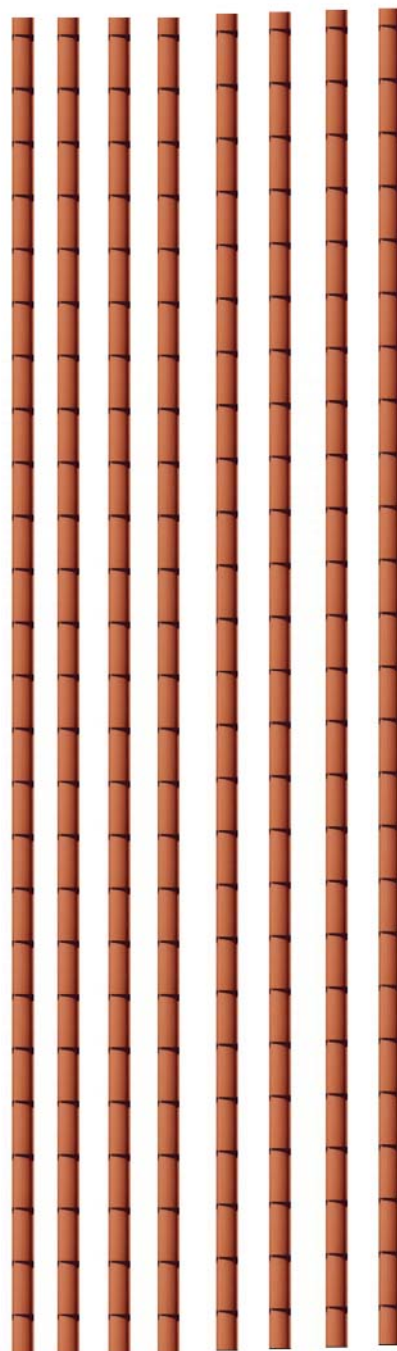
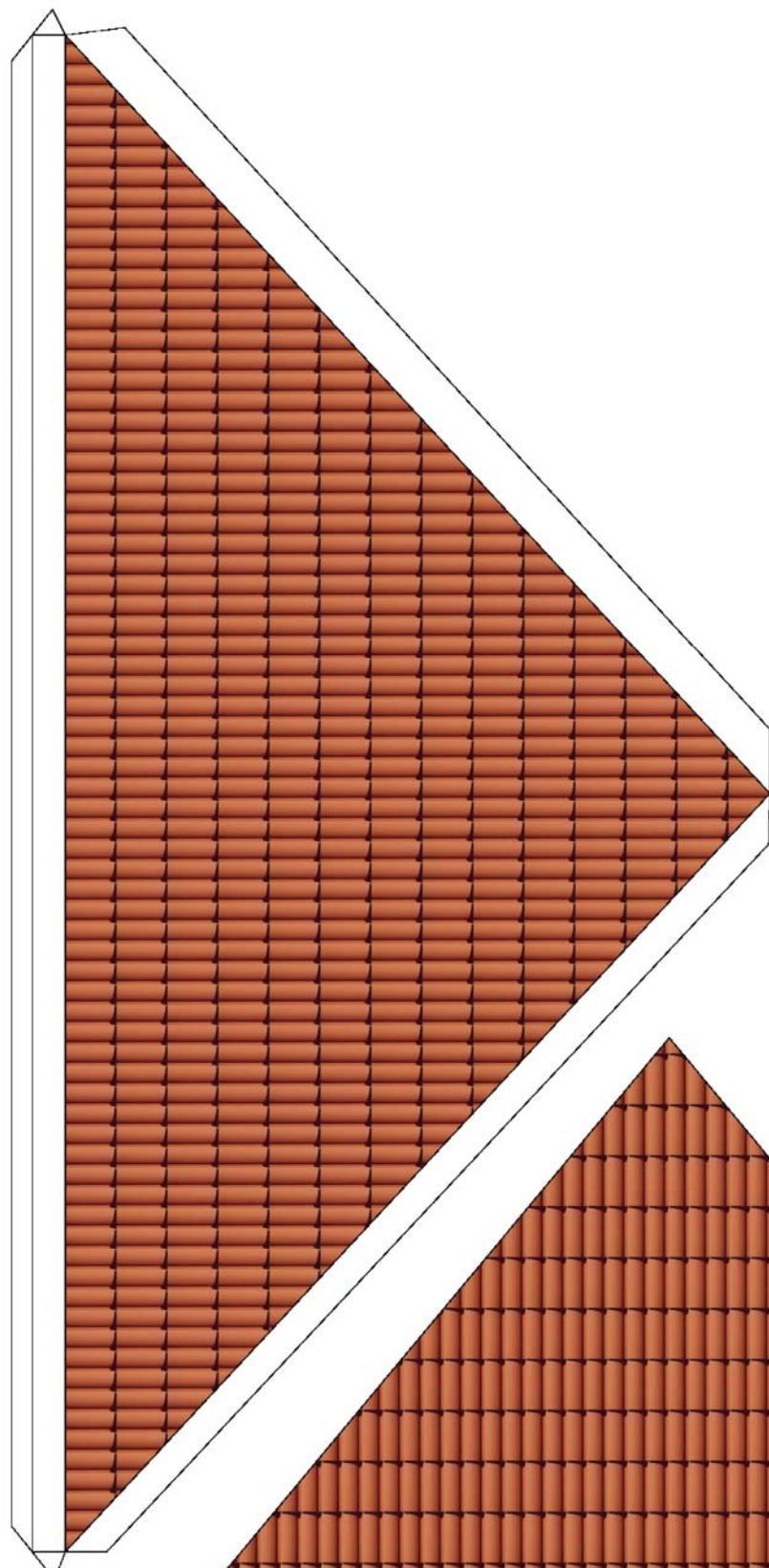
13

[www.Maquetasdepapel.com](http://www.Maquetasdepapel.com)

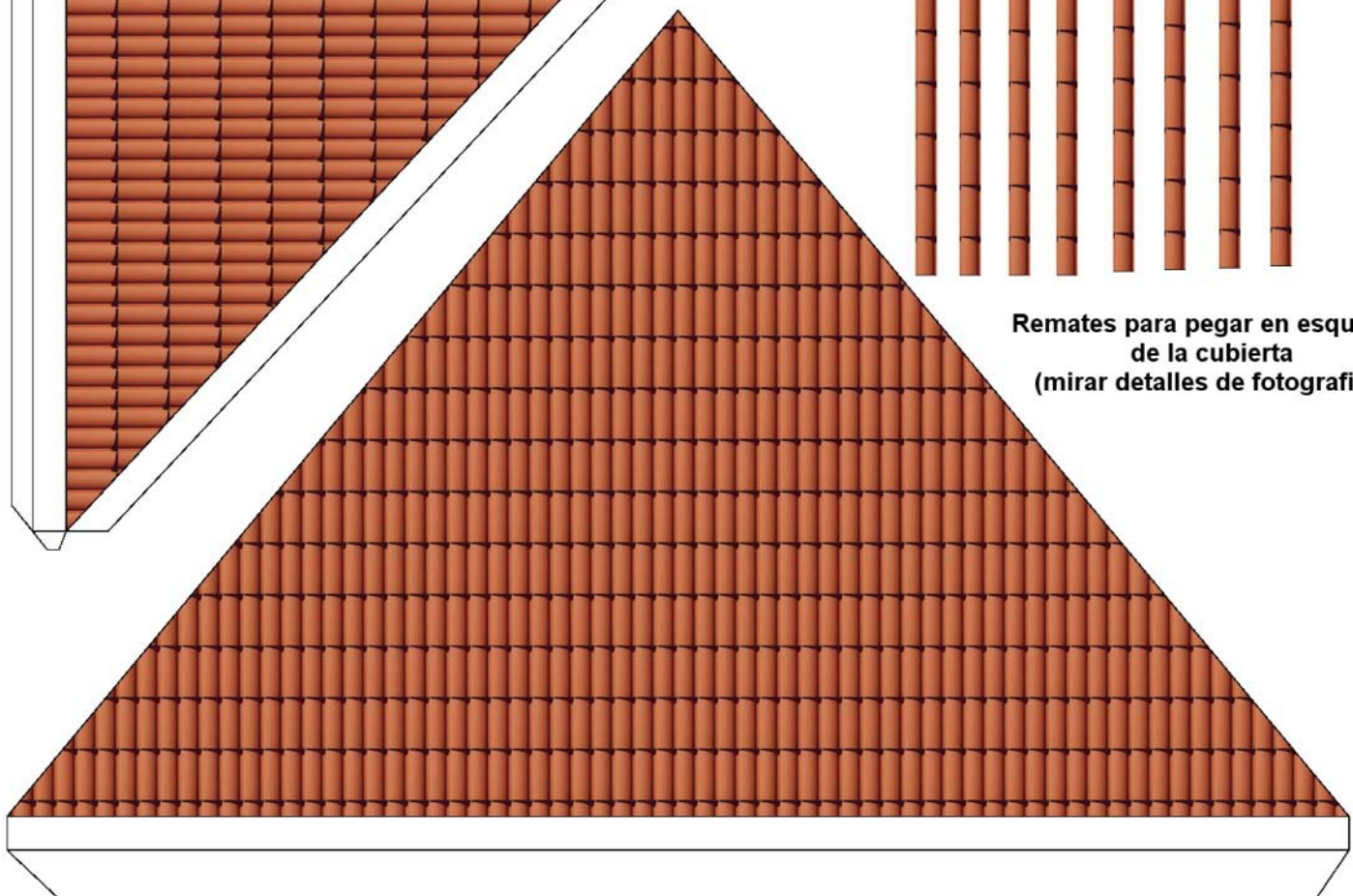
Prohibida su venta  
difusion libre

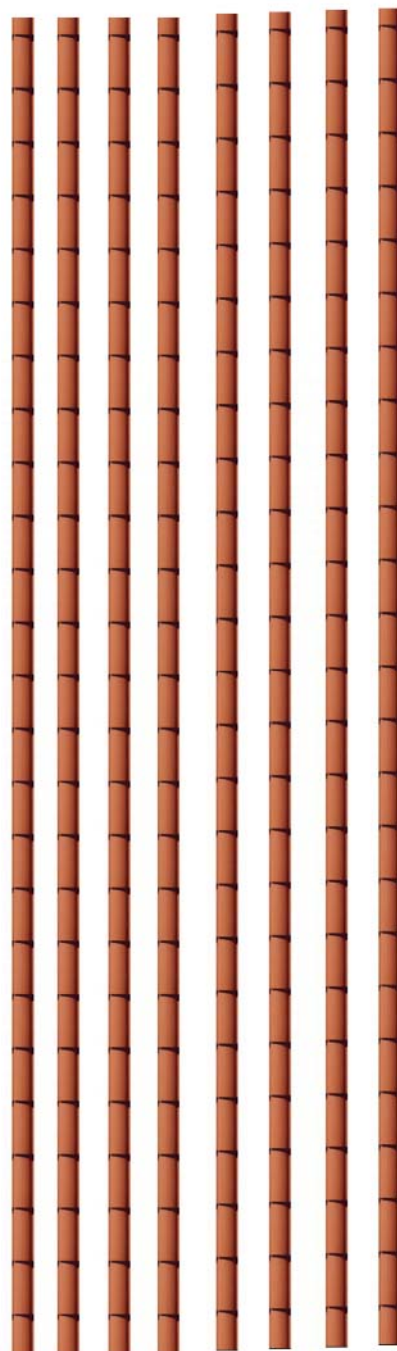
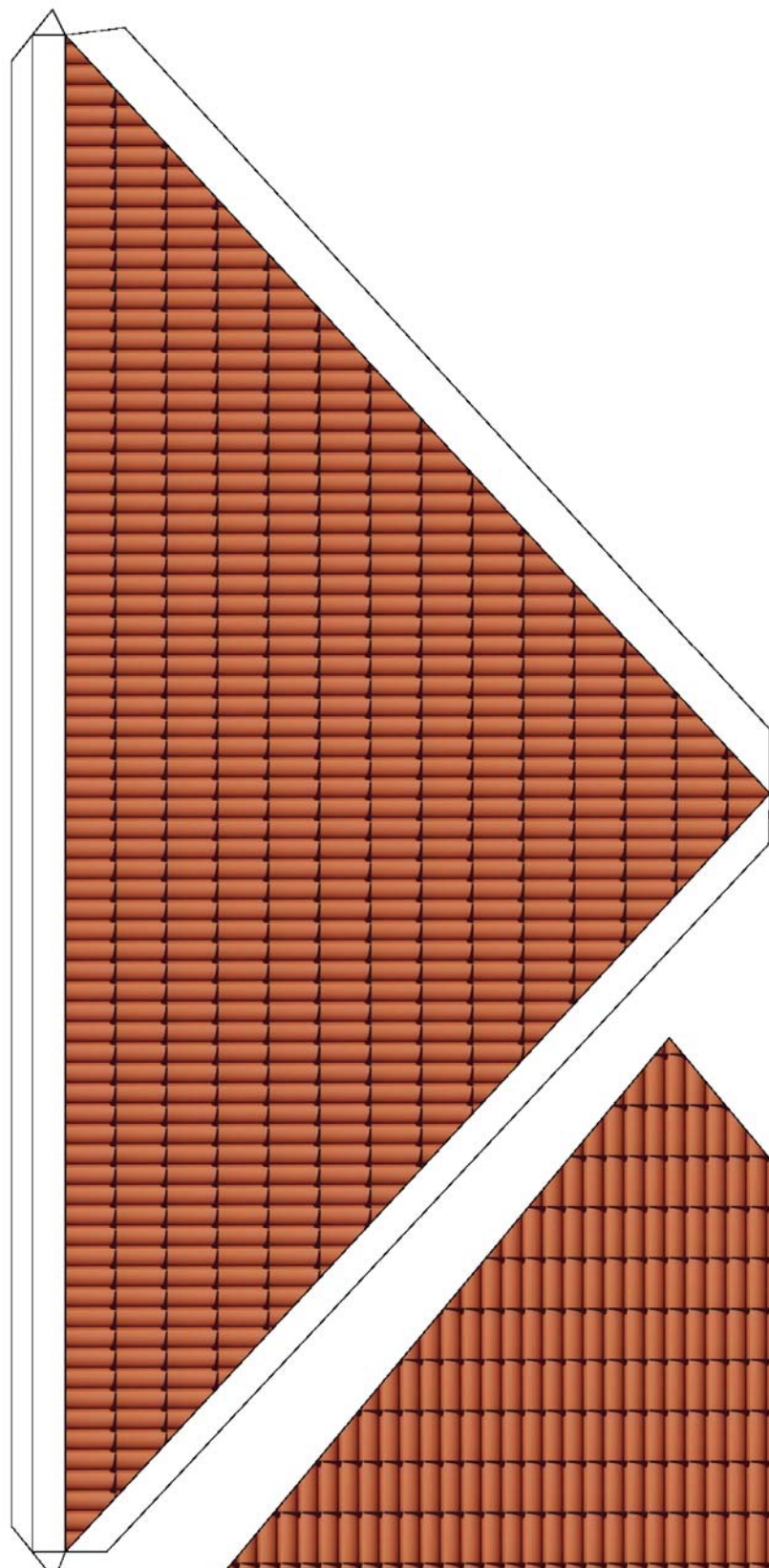




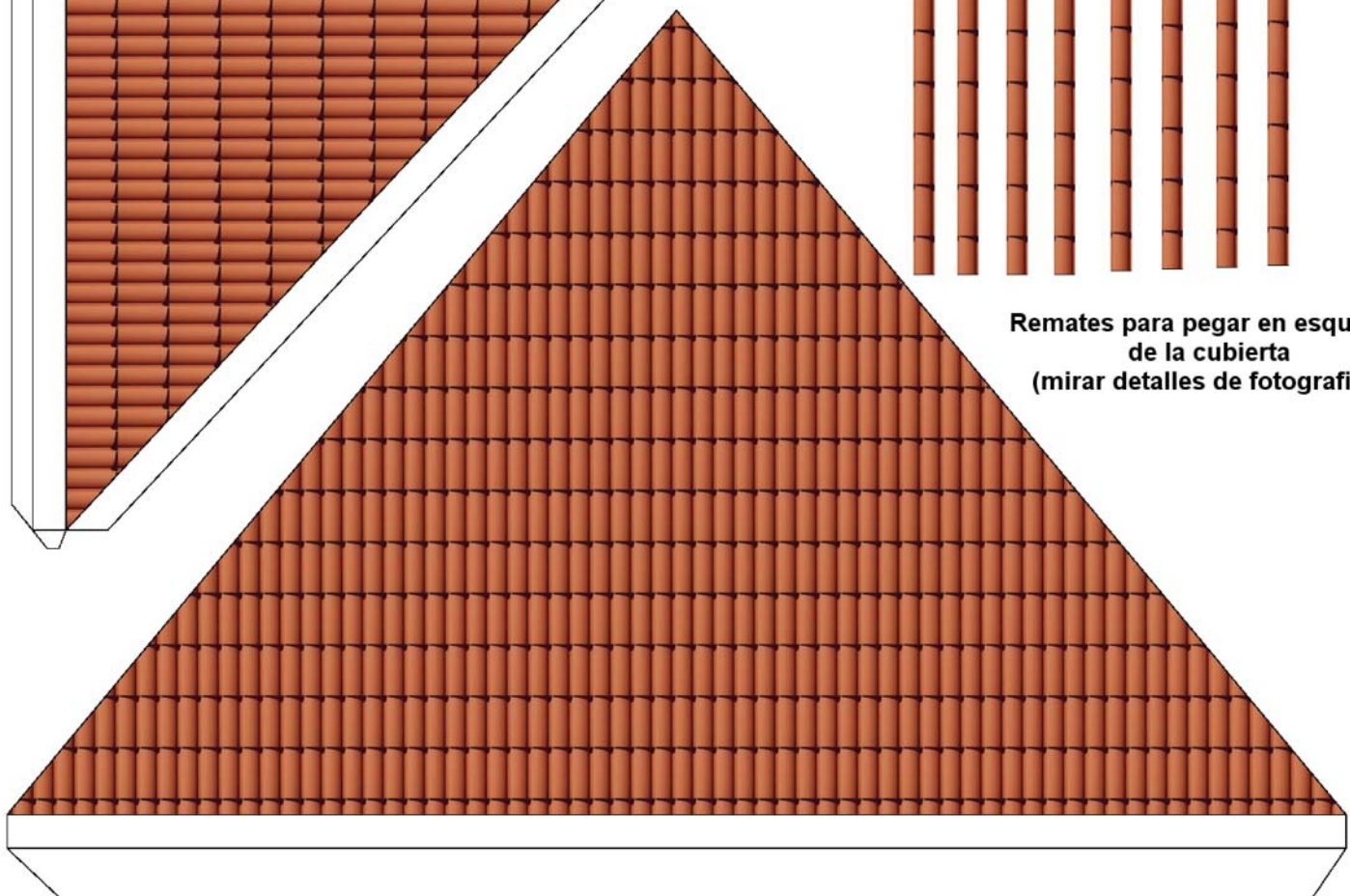


**Remates para pegar en esquinas  
de la cubierta  
(mirar detalles de fotografías)**

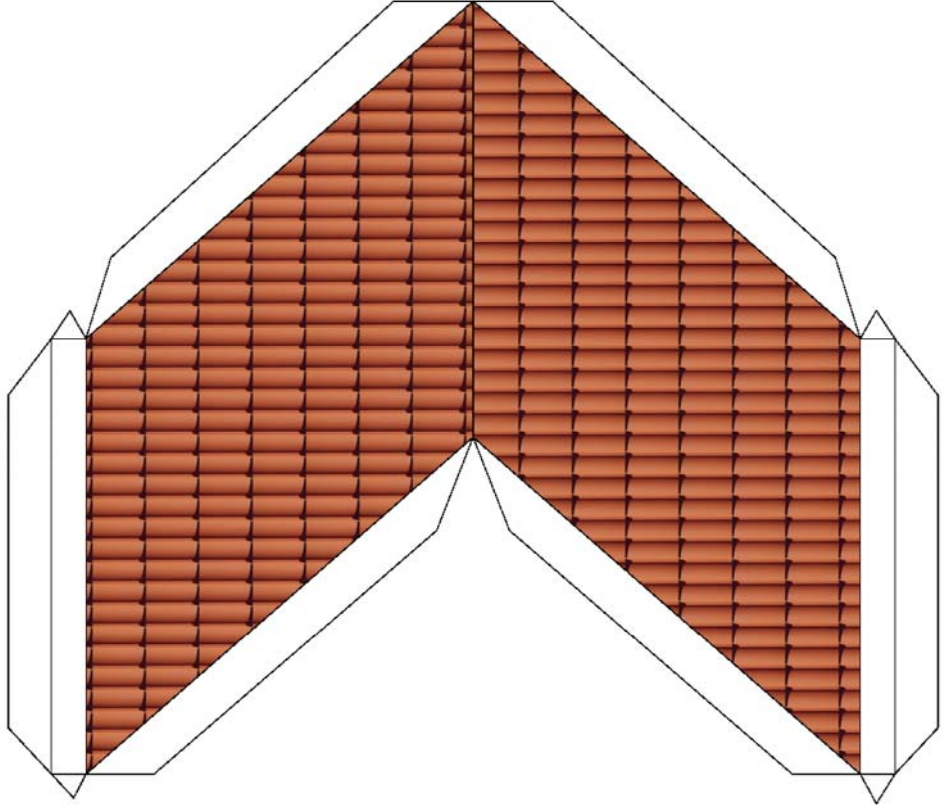




**Remates para pegar en esquinas  
de la cubierta  
(mirar detalles de fotografías)**



techo entrada de garaje



columnas entrada

