



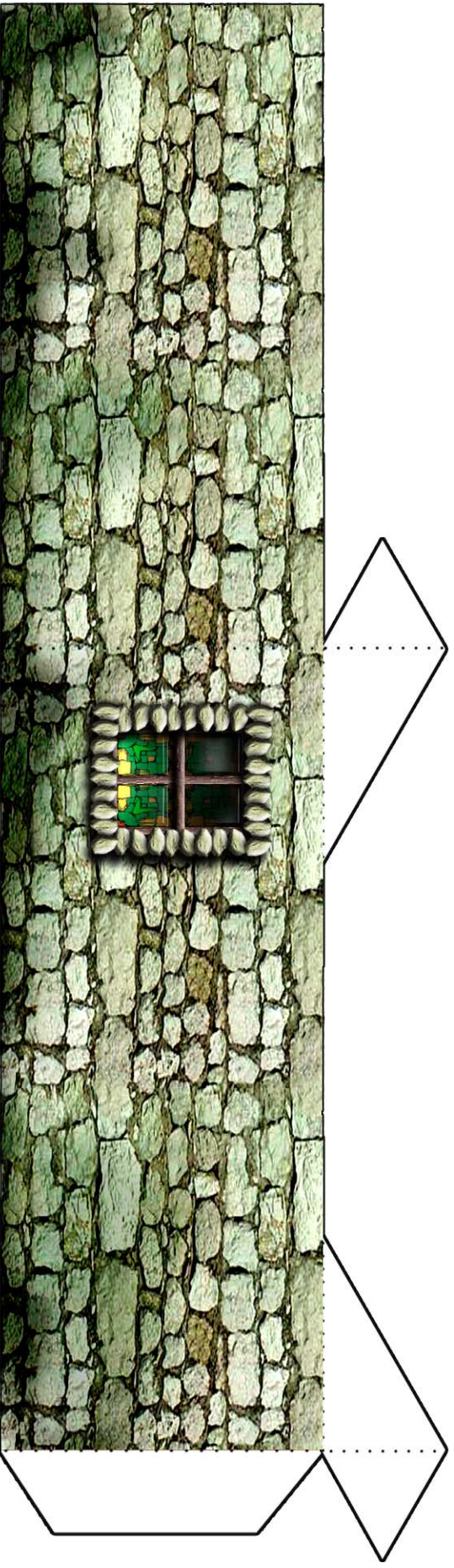
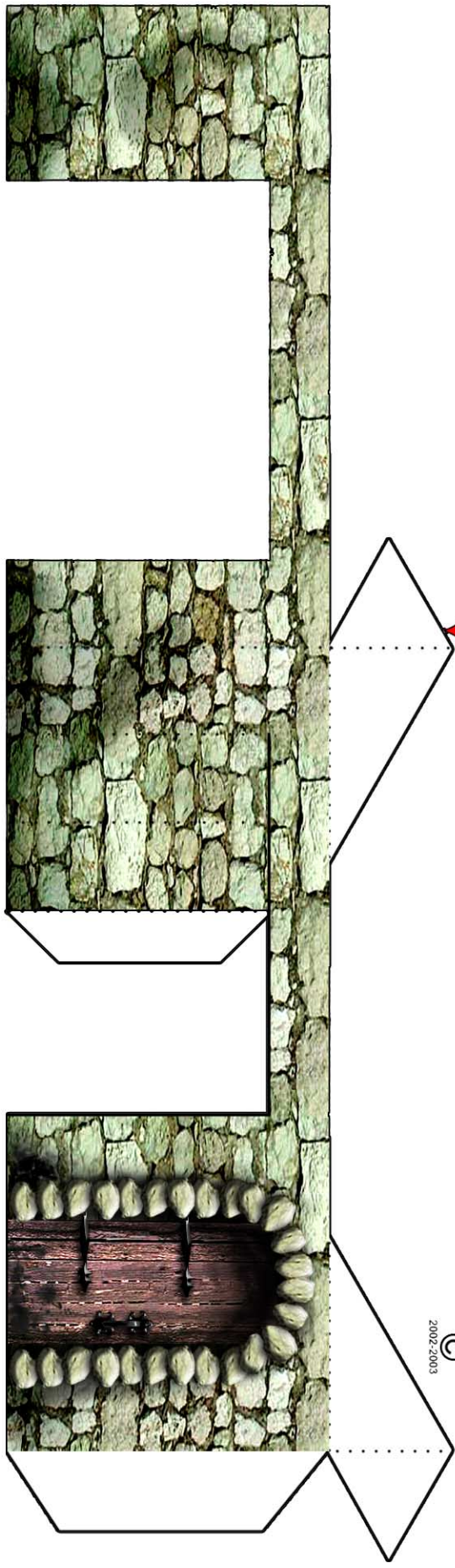
SMITH

The smithy goes together essentially the same way the other buildings do with some minor differences.

- Cut, score and fold your models
- Construct your model as noted in the generic instruction set in the previous folder.
- On page.1 fold the arch column inward and glue to form the corner support column (See photos)
- Take the smithy interior on page. 3 and paste its glue tabs to the inside of the base wall. (See Photos)



Cut Through Black Lines and Borders _____ ✂
Score and Fold Along Dotted Lines
Score and Fold on Reverse Side







Cut Through Black Lines and Borders
Score and Fold Along Dotted Lines
Score and Fold on Reverse Side

