

3D PAPER CRAFT

[Seasons & Holidays]

Mother's Day: Carnation Card



The second Sunday in May is designated as "Mother's Day". In 1907, an American named Anna Jarvis gave carnations to visitors at a memorial service held on the anniversary of her mother's death. This was the first celebration of what became Mother's Day. Today, people give their mothers flowers or gifts. You can use this carnation card to express your thanks to your mother.

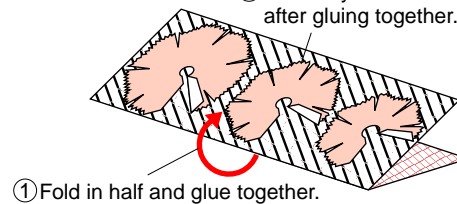
Directions

Build the FLOWER PETALS 1



FLOWER PETALS 1 - 3

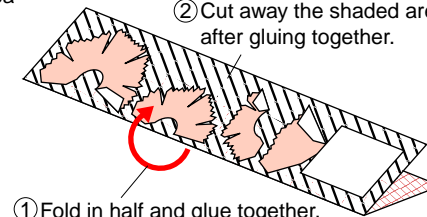
② Cut away the shaded area after gluing together.



① Fold in half and glue together.

FLOWER PETALS 4 - 7

② Cut away the shaded area after gluing together.



① Fold in half and glue together.

FLOWER PETAL 1

FLOWER PETAL 2

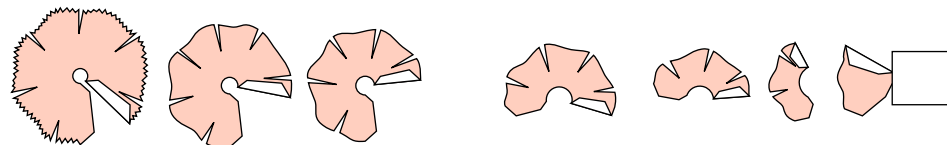
FLOWER PETAL 3

FLOWER PETAL 4

FLOWER PETAL 5

FLOWER PETAL 6

FLOWER PETAL 7



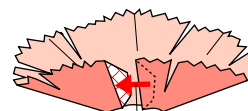
Fold each of the FLOWER PETALS along all of their fold lines.

FLOWER PETAL 1

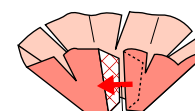
FLOWER PETAL 2

FLOWER PETAL 3

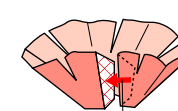
FLOWER PETAL 4



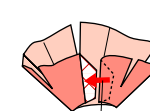
Glue.



Glue.



Glue.

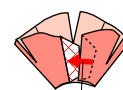


Glue.

FLOWER PETAL 5

FLOWER PETAL 6

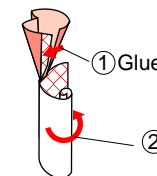
FLOWER PETAL 7



Glue.



Glue.



① Glue.

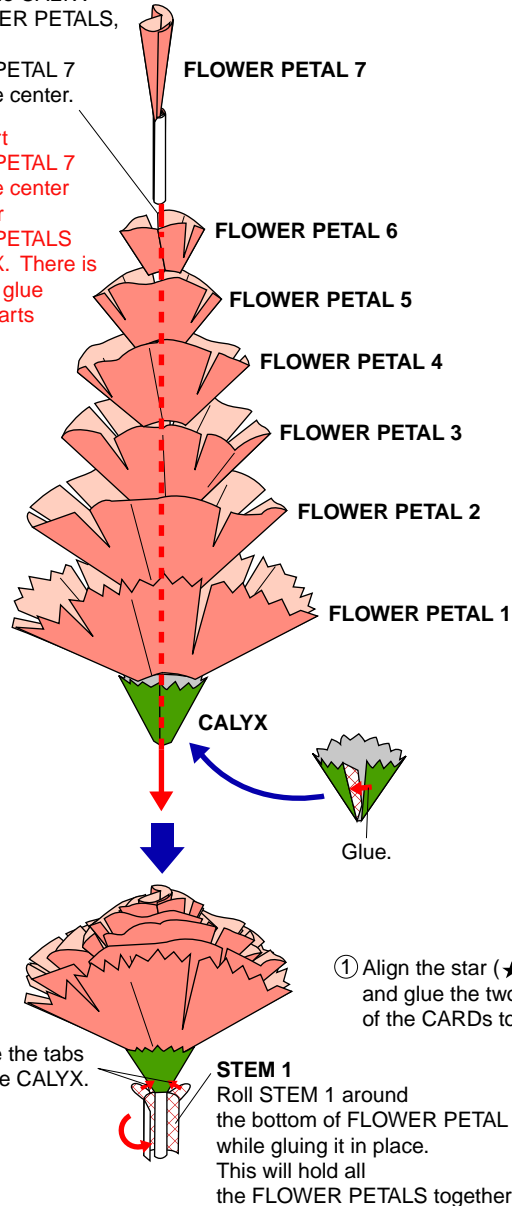
② Roll up tightly and glue together.

Directions

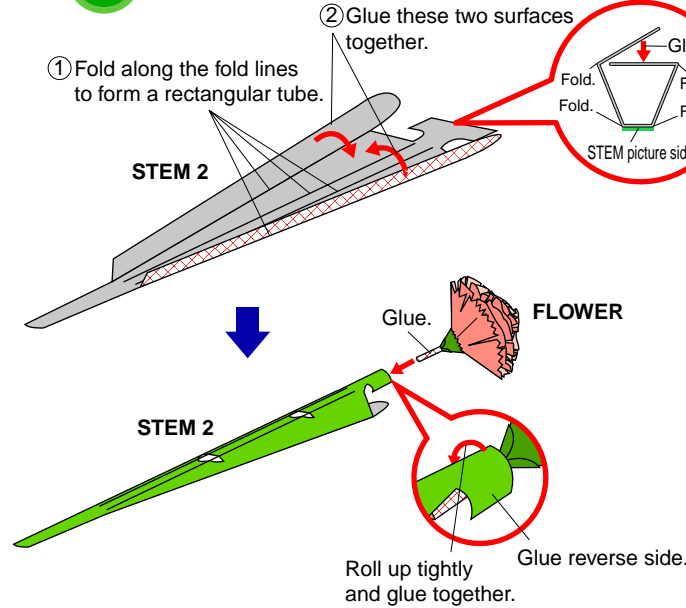
2 Put the FLOWER together

Stack up the CALYX and FLOWER PETALS, and insert FLOWER PETAL 7 through the center.

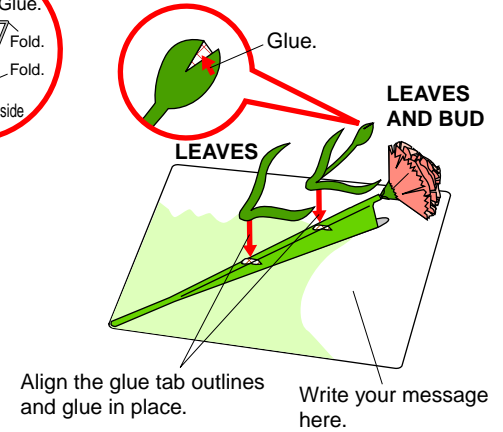
* Just insert FLOWER PETAL 7 through the center of the other FLOWER PETALS and CALYX. There is no need to glue the other parts together.



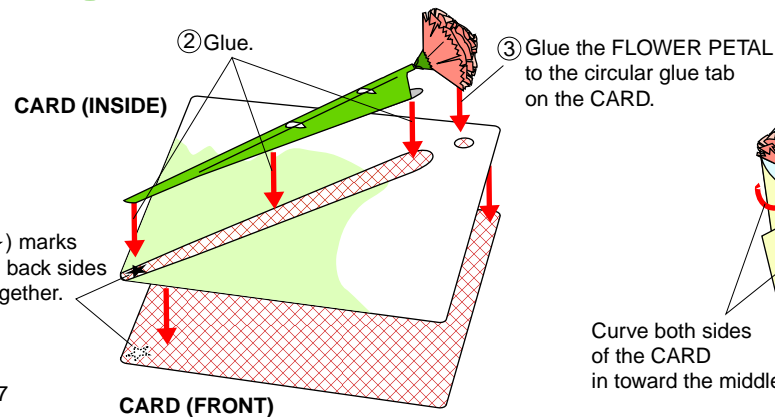
3 Attach the FLOWER and STEM



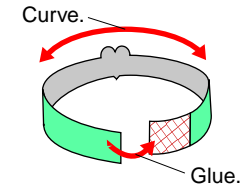
5 Glue the LEAVES AND BUD



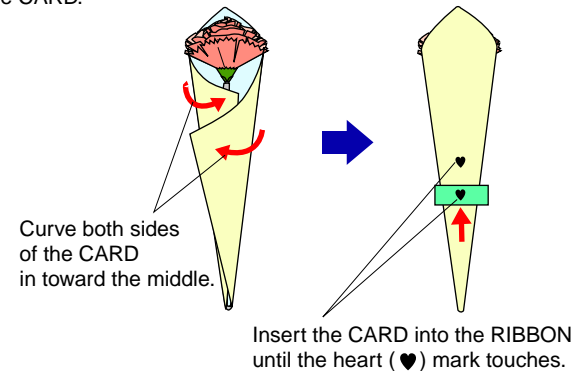
4 Glue the FLOWER to the CARD



6 Build the RIBBON

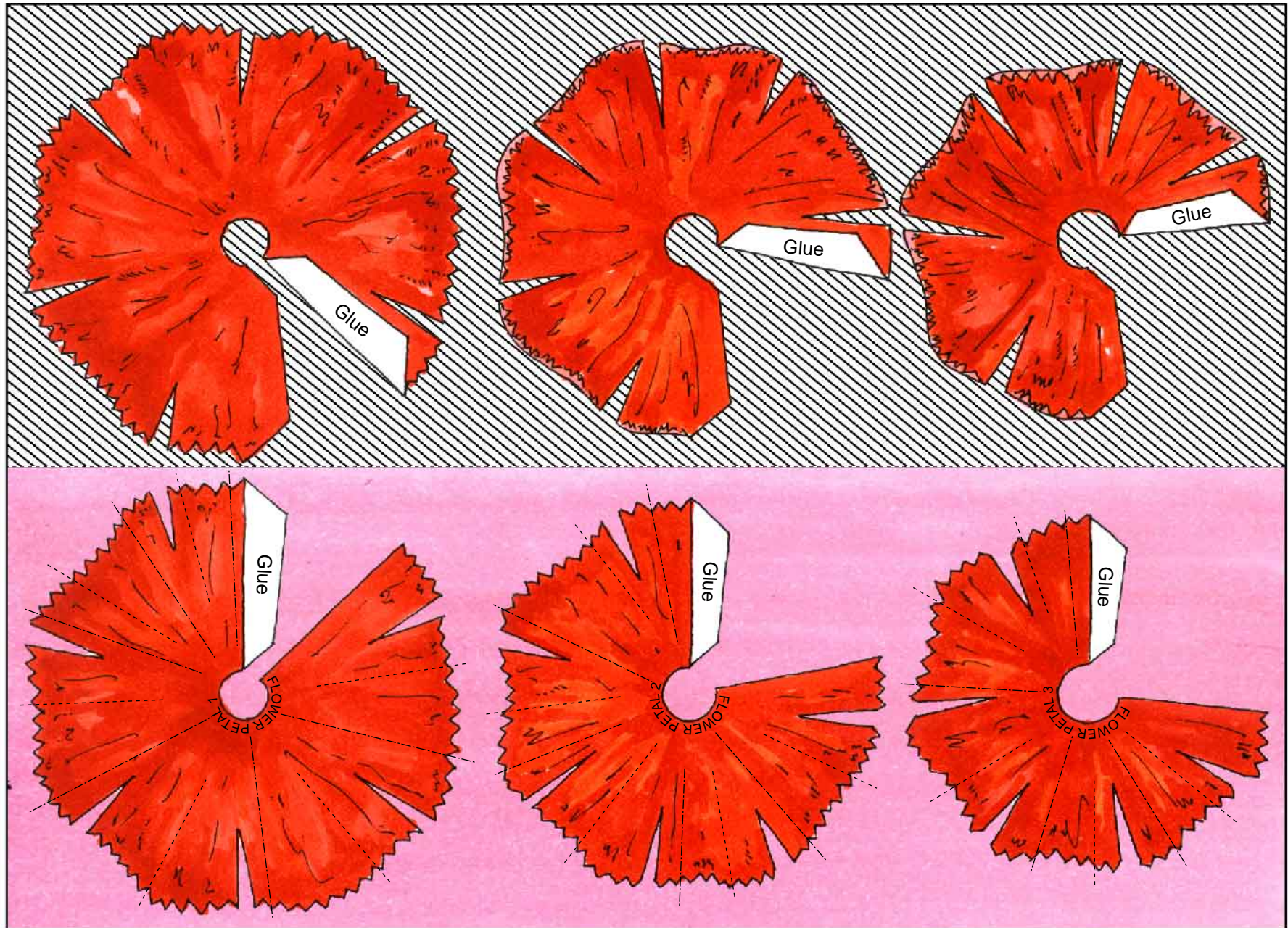


7 Roll the CARD

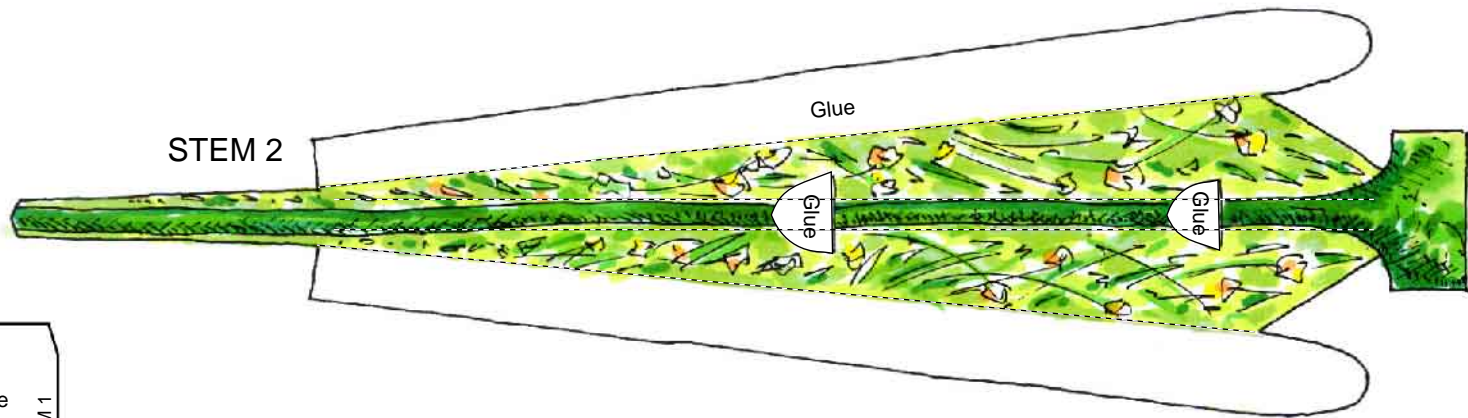
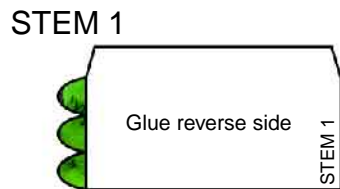
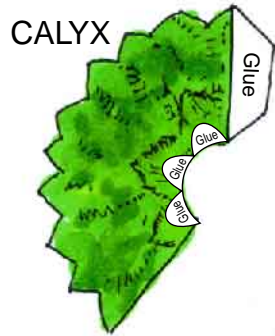
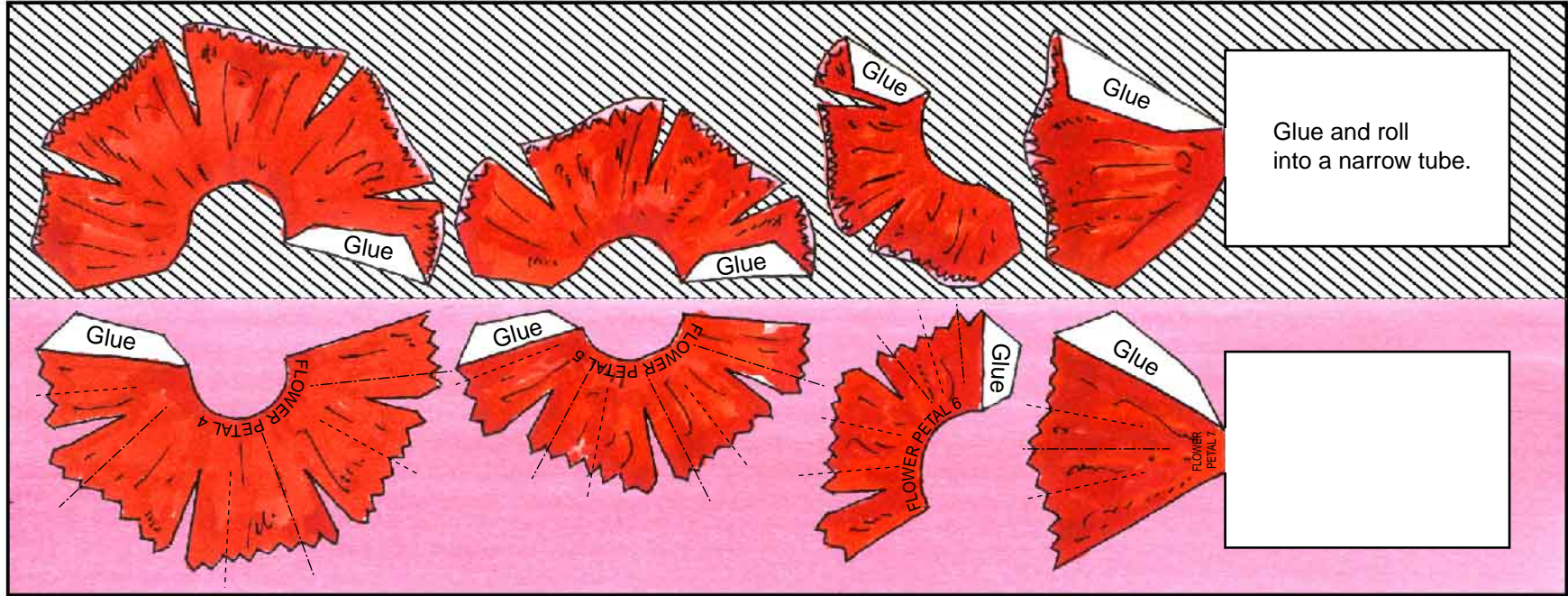


FLOWER PETALS 1 – 3

- Cut line
- - - Mountain fold
- · - · Valley fold



FLOWER PETALS 4 – 7



- Cut line
- - - Mountain fold
- · - · Valley fold

CARD
(FRONT)

Canon
PAPER CRAFT
<http://bj.canon.co.jp/english/2d/papercraft/>
Canon® is a registered trademark of Canon Inc.
© D-Japan, Inc.

- Cut line
- - - Mountain fold
- · - · Valley fold

RIBBON



Glue

Happy Mother's Day!



CARD (INSIDE)

- Cut line
- - - Mountain fold
- · - · - Valley fold

LEAVES AND BUD



LEAVES

