



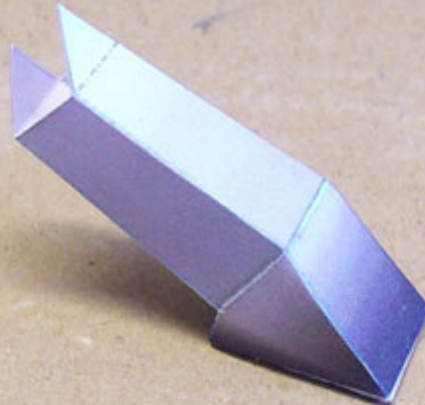
# Romani Ranch mule assembly manual

## step 1



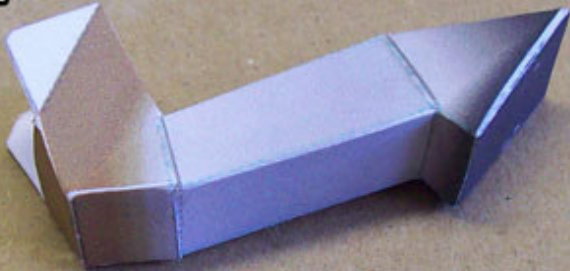
Step 1 is to cut out and assemble *part 1*. ;o)

## step 2



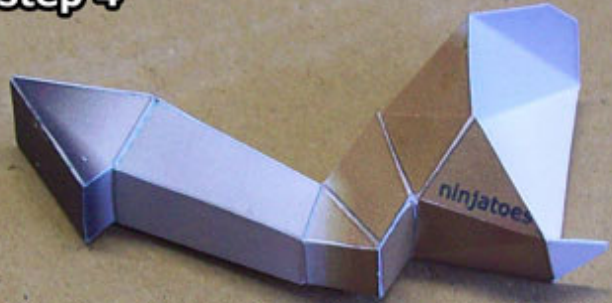
I bet you knew part 2 was next?

## step 3



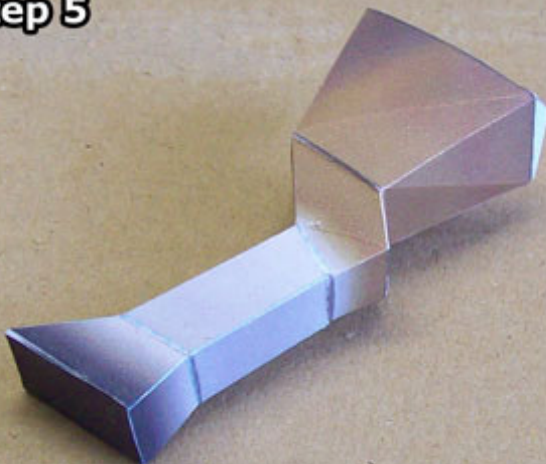
It's best to assemble part 3 first, and then glue it to the rest of the leg as shown here.

## step 4



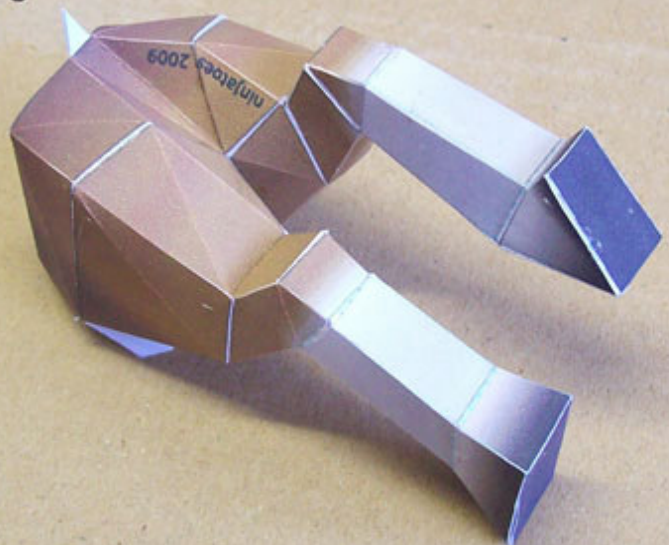
Likewise, glue together the two ends of part 4 before glueing it to the rest of the leg.

## step 5



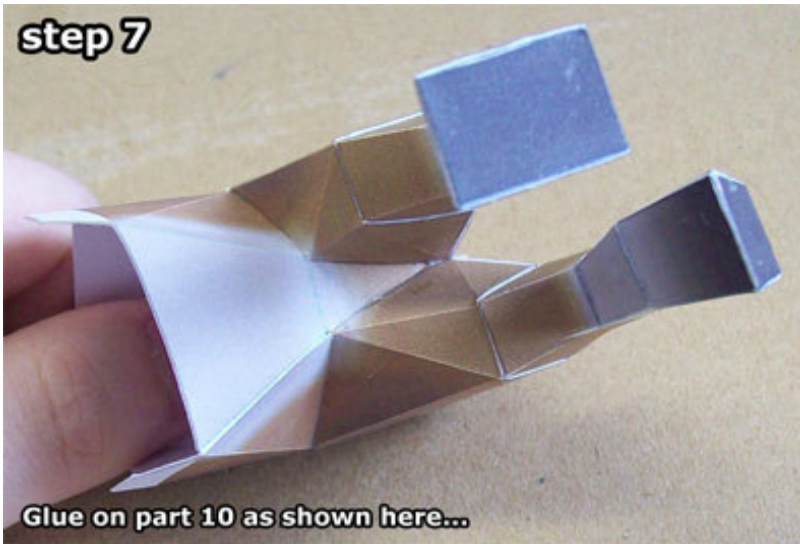
Parts 5-8 go together much the same way as you can see here.

## step 6



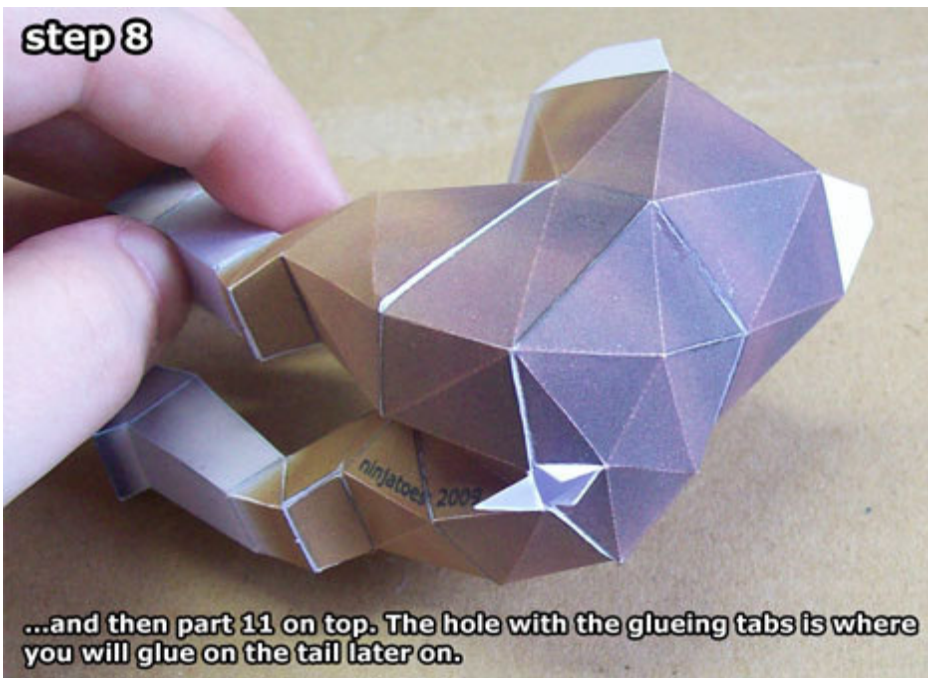
Glue the two hind legs together using part 9. Make sure to valley fold the thin, triangular part between the legs and you can't really go wrong. ;o)

**step 7**



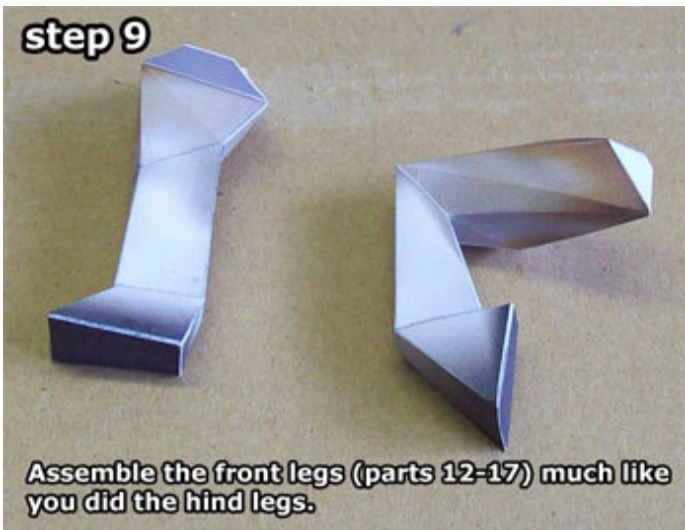
Glue on part 10 as shown here...

**step 8**



...and then part 11 on top. The hole with the glueing tabs is where you will glue on the tail later on.

**step 9**



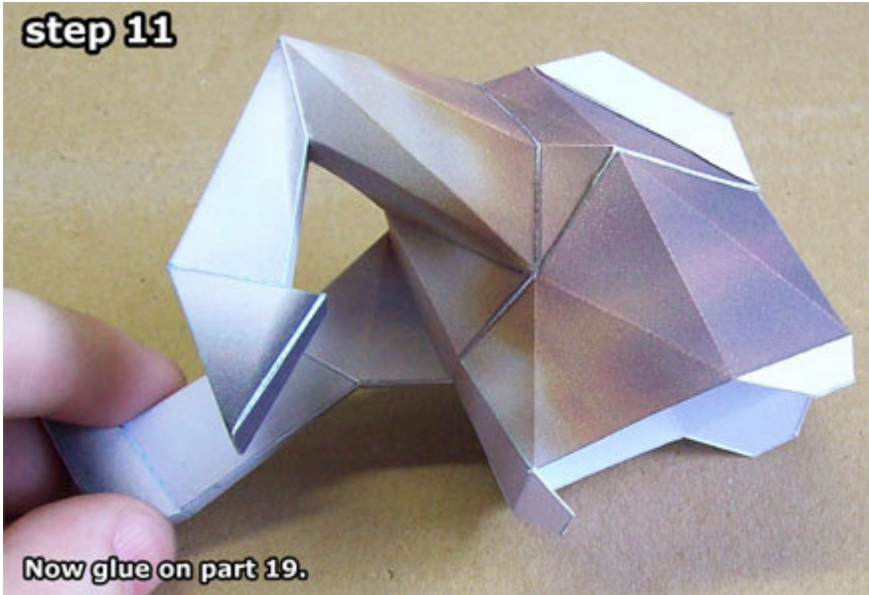
Assemble the front legs (parts 12-17) much like you did the hind legs.

**step 10**



Use part 18 to glue the front legs together as shown here.

### step 11



Now glue on part 19.

### step 12



Glue on the neck parts (parts 20+21) and then glue the two halves of your mule together. If you're having trouble making the mule stand up, adjust the legs until it does.

### step 13



Cut out and assemble part 22.

### step 14



Glue on part 23 as shown here (make sure you got all the valley folds right).

**step 15**



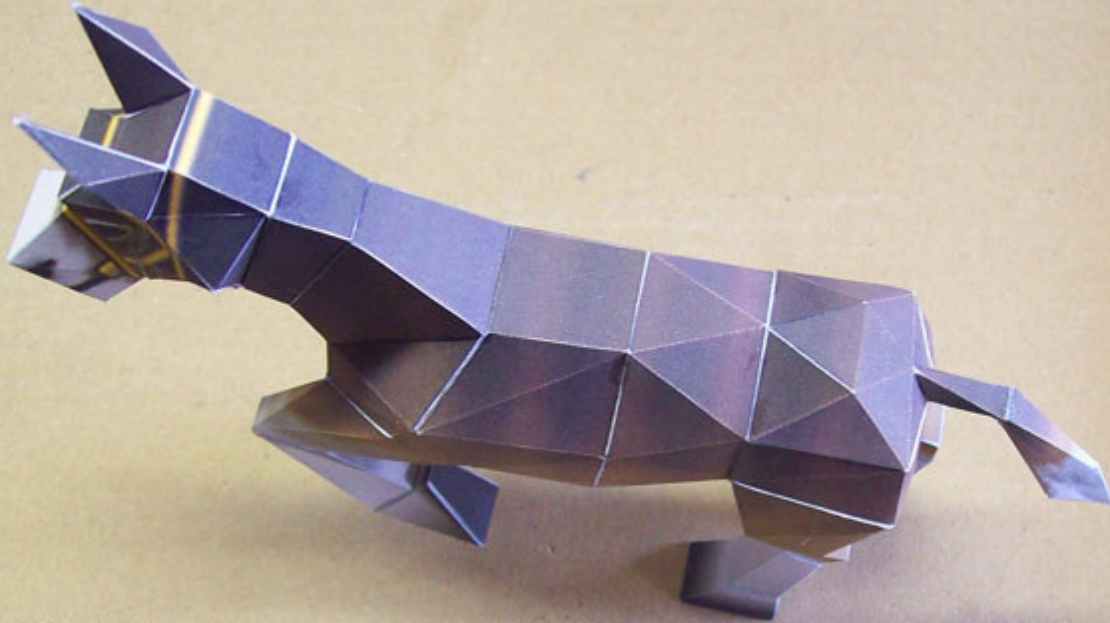
Glue on the snout (part 24) and then glue the head to the neck.

**step 16**



Assemble the ears (parts 25+26) and glue them to the glueing tabs left on the head.

**step 17**



**And that's that! Your very own Romani Ranch mule! I hope you had fun building!**

[www.kickme.to/ninjatoes](http://www.kickme.to/ninjatoes)  
[www.ninjatoes.blogspot.com](http://www.ninjatoes.blogspot.com)