

kotwy z drutu-gr.1mm.

Drażek sterowy

czarna rurka plastikowa

szpilka

15mm

48-wewn.

48a

48-zewn.

111

112

91

87

87a

87b

87c

87d

92

98a

107

108

109

110

115b

115a

114b

114a

113

112a

112

111

106

107

108

109

110

115b

115a

114b

114a

113

112a

112

111

106

107

108

109

110

115b

115a

114b

114a

113

112a

112

111

106

107

108

109

110

115b

115a

114b

114a

113

112a

112

111

106

107

108

109

110

115b

115a

114b

114a

113

112a

112

111

106

107

108

109

110

115b

115a

114b

114a

113

112a

112

111

106

107

108

109

110

115b

115a

114b

114a

113

112a

112

111

106

107

108

109

110

115b

115a

114b

114a

113

112a

112

111

106

107

108

109

110

115b

115a

114b

114a

113

112a

112

111

106

107

108

109

110

115b

115a

114b

114a

113

112a

112

111

106

107

108

109

110

115b

115a

114b

114a

113

112a

112

111

106

107

108

109

110

115b

115a

114b

114a

113

112a

112

111

106

107

108

109

110

115b

115a

114b

114a

113

112a

112

111

106

107

108

109

110

115b

115a

114b

114a

113

112a

112

111

106

107

108

109

110

115b

115a

114b

114a

113

112a

112

111

106

107

108

109

110

115b

115a

114b

114a

113

112a

112

111

106

107

108

109

110

115b

115a

114b

114a

113

112a

112

111

106

107

108

109

110

115b

115a

114b

114a

113

112a

112

111

106

107

108

109

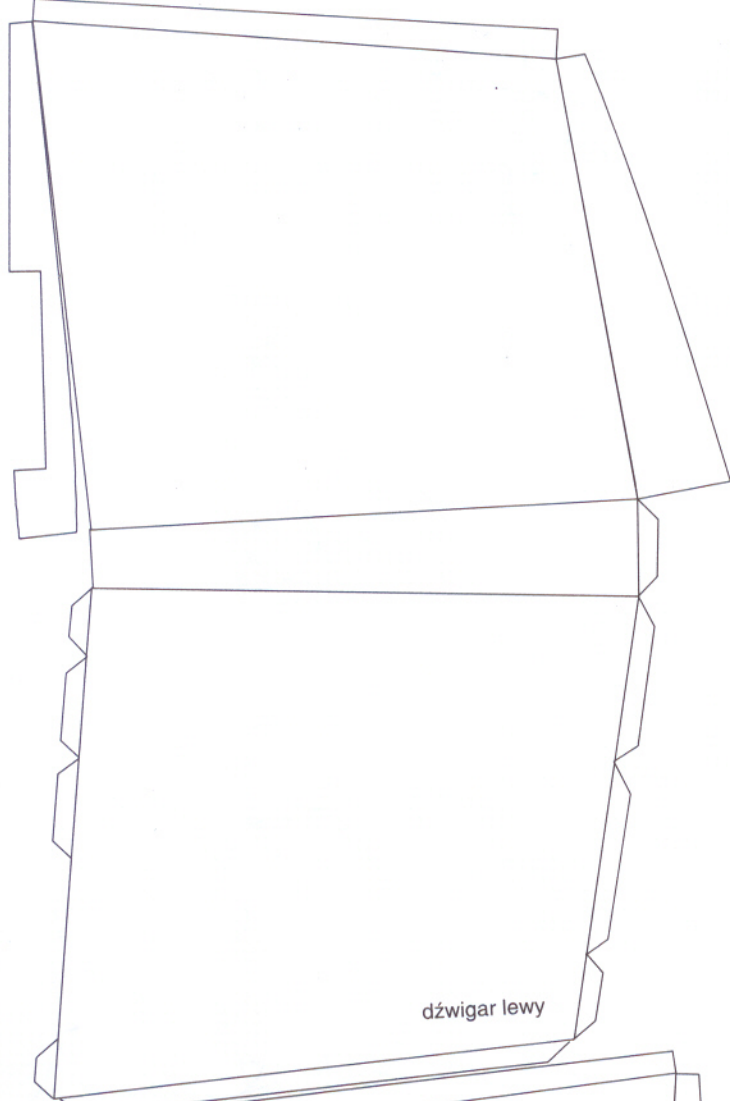
110

115b

115a

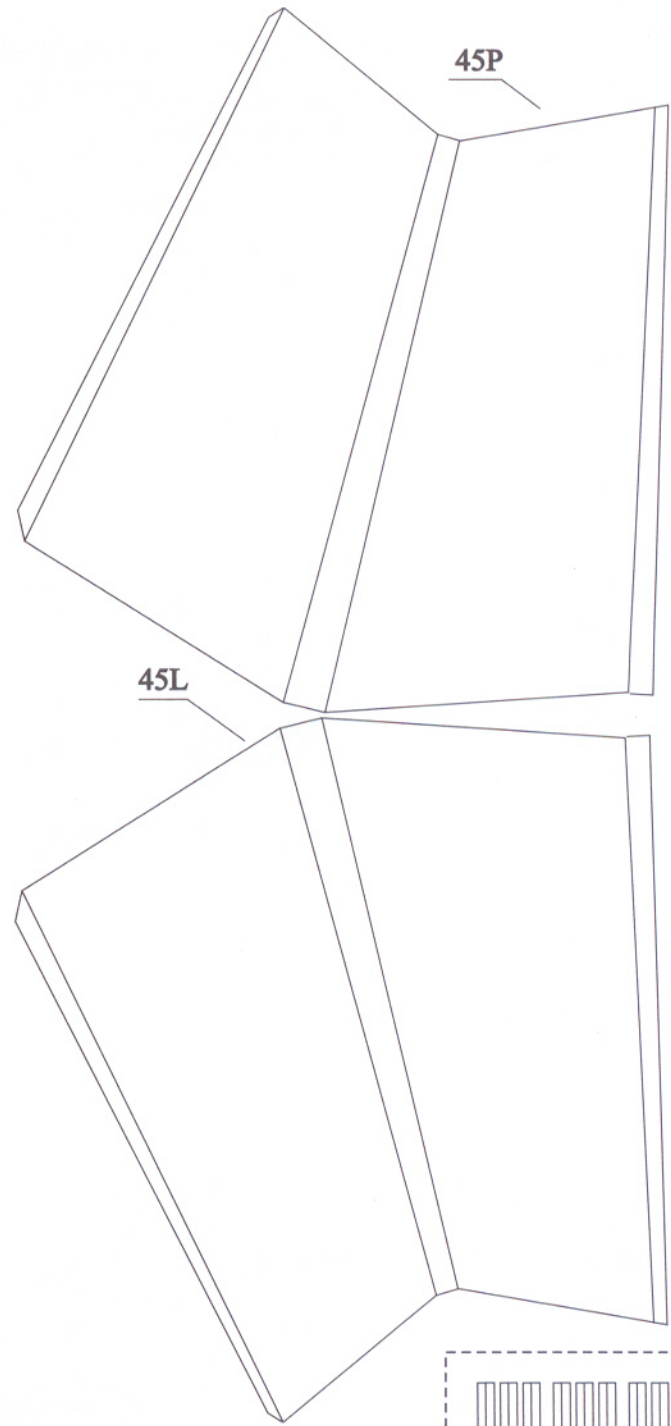
114b

114a



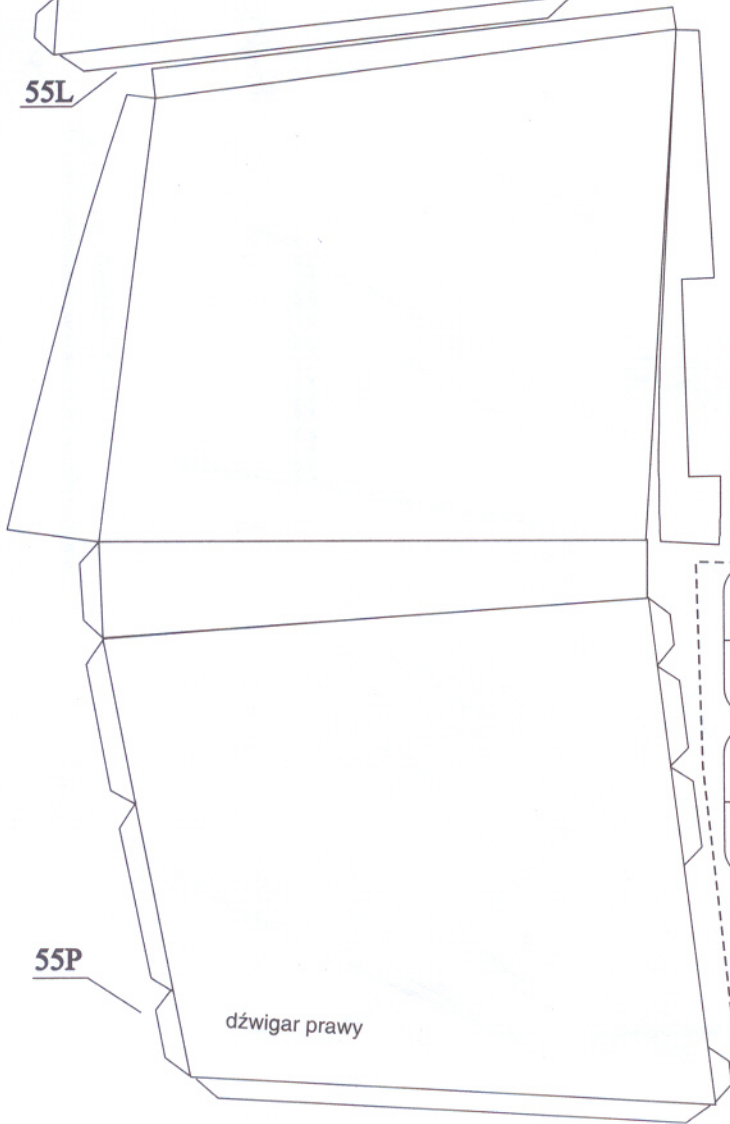
dźwigar lewy

55L



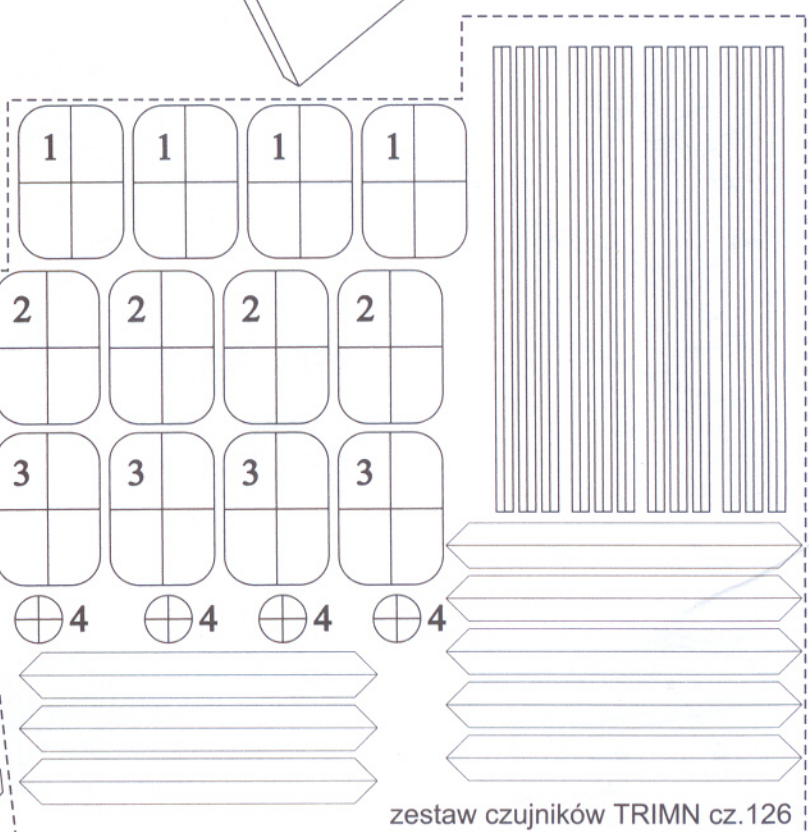
45P

45L

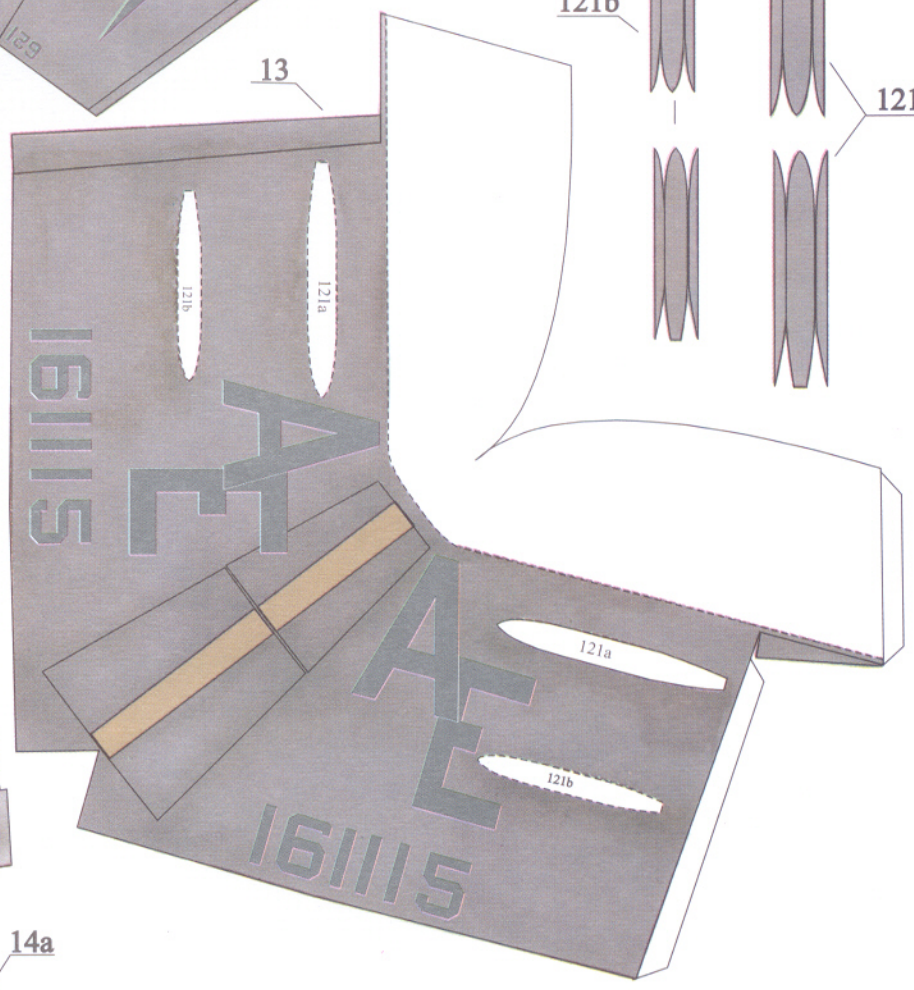
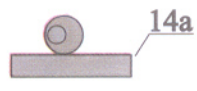
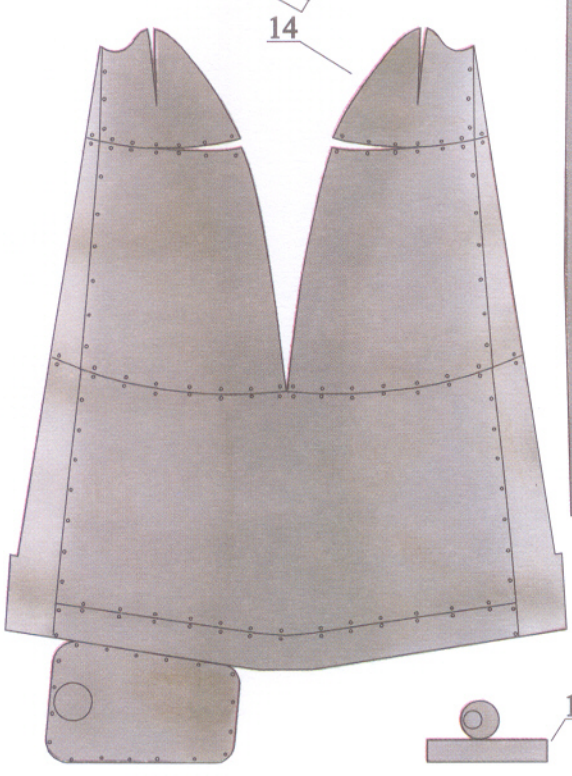
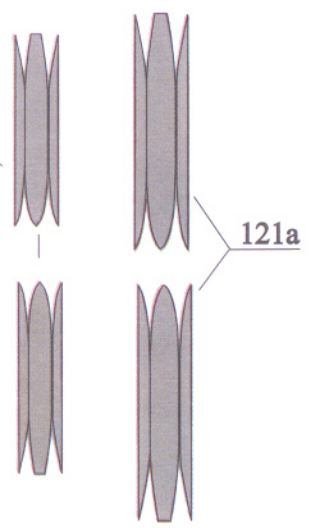
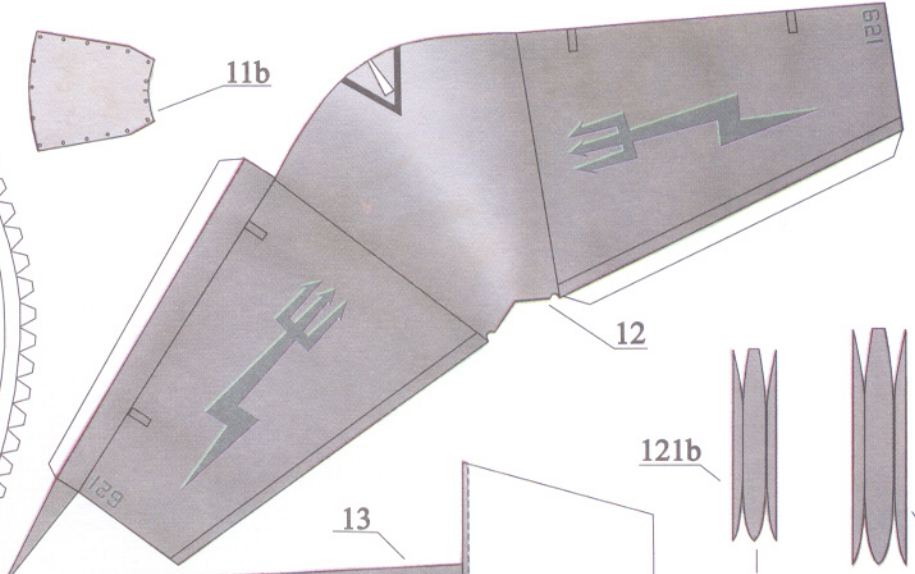
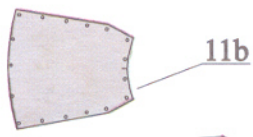
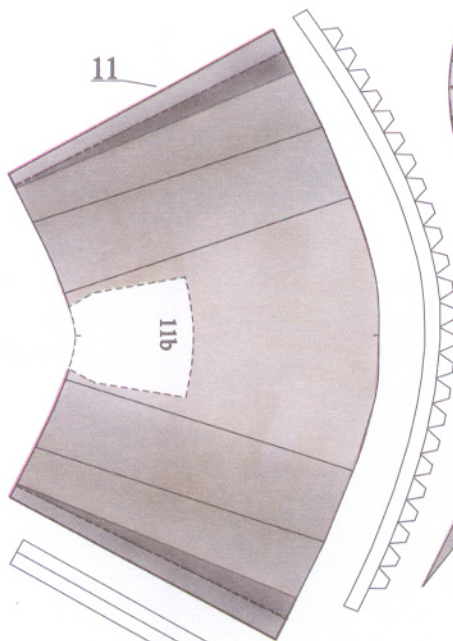
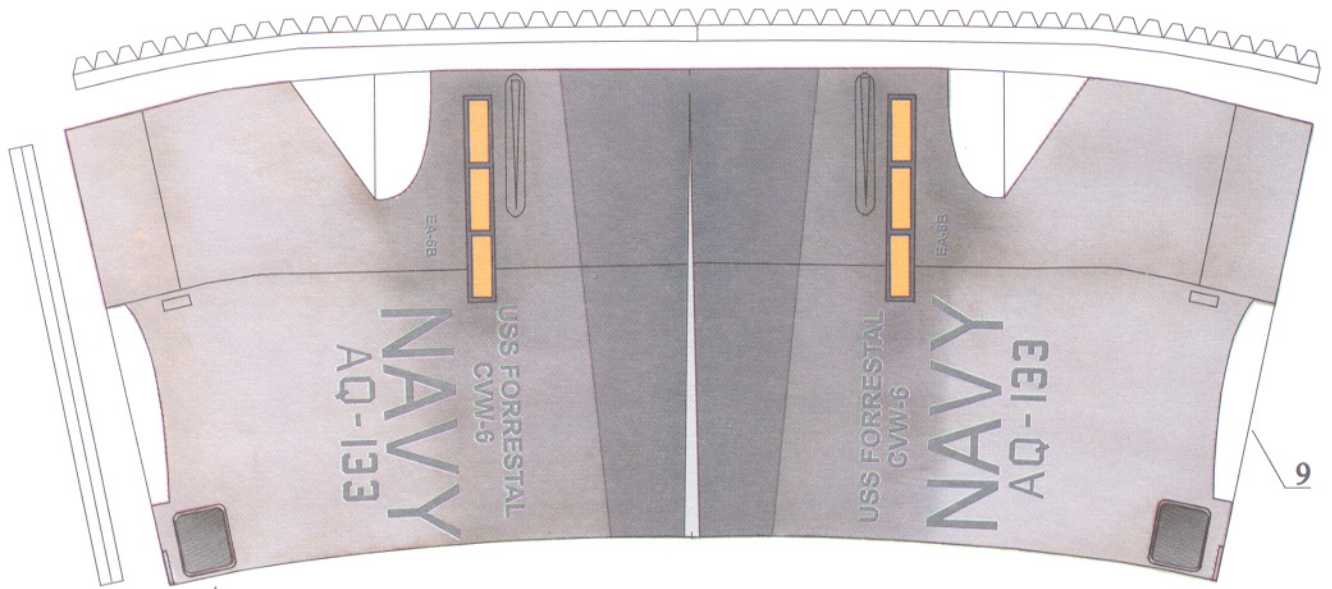


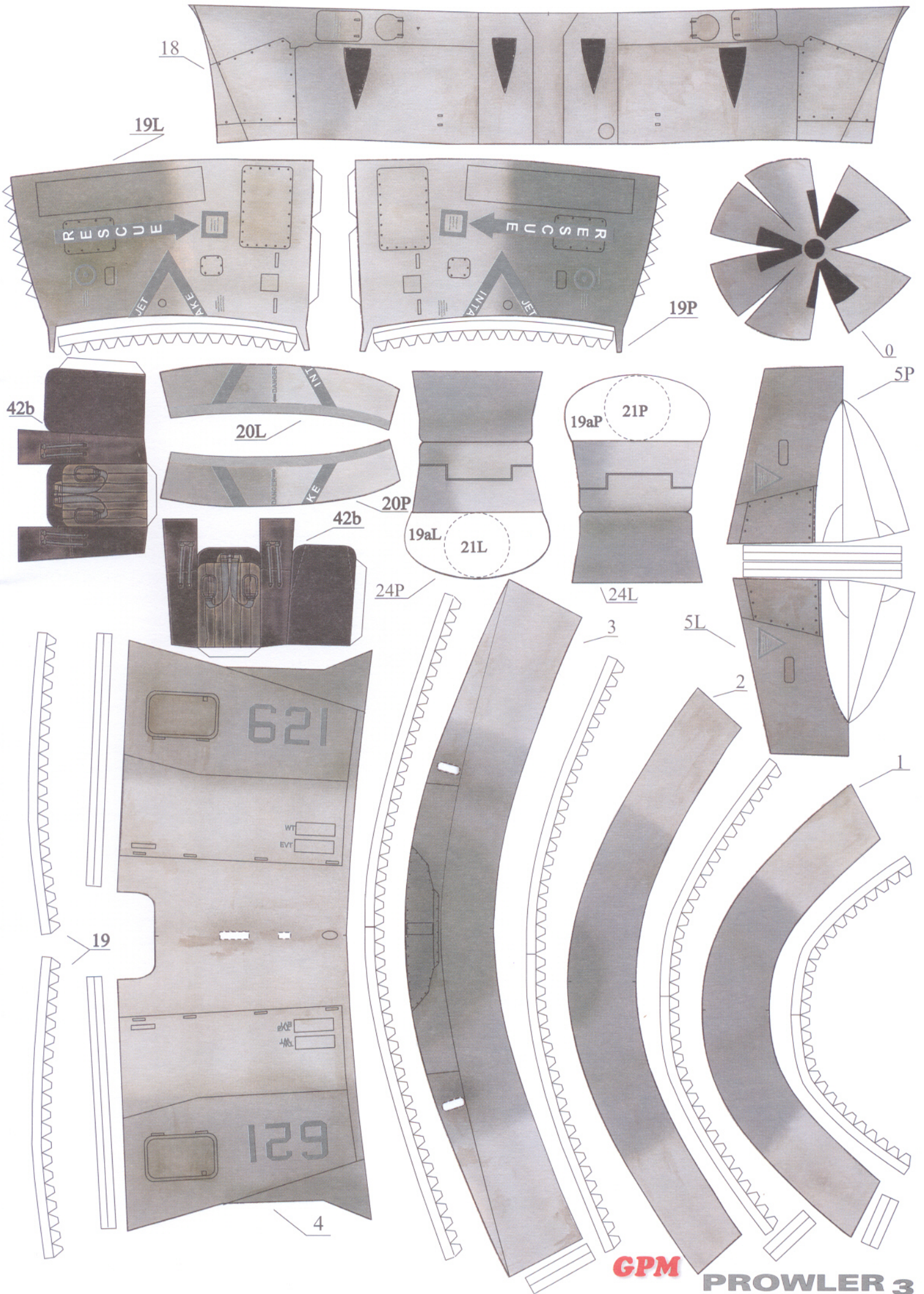
dźwigar prawy

55P

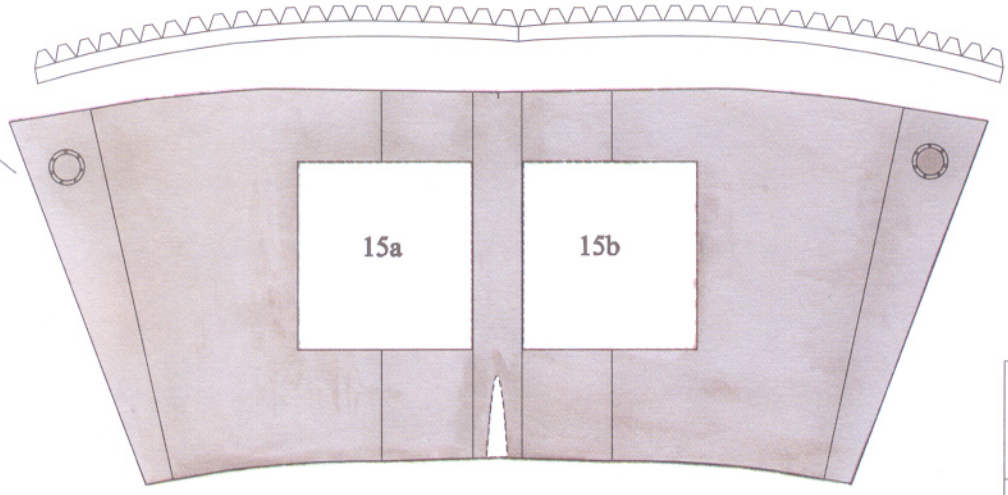


zestaw czujników TRIMN cz.126

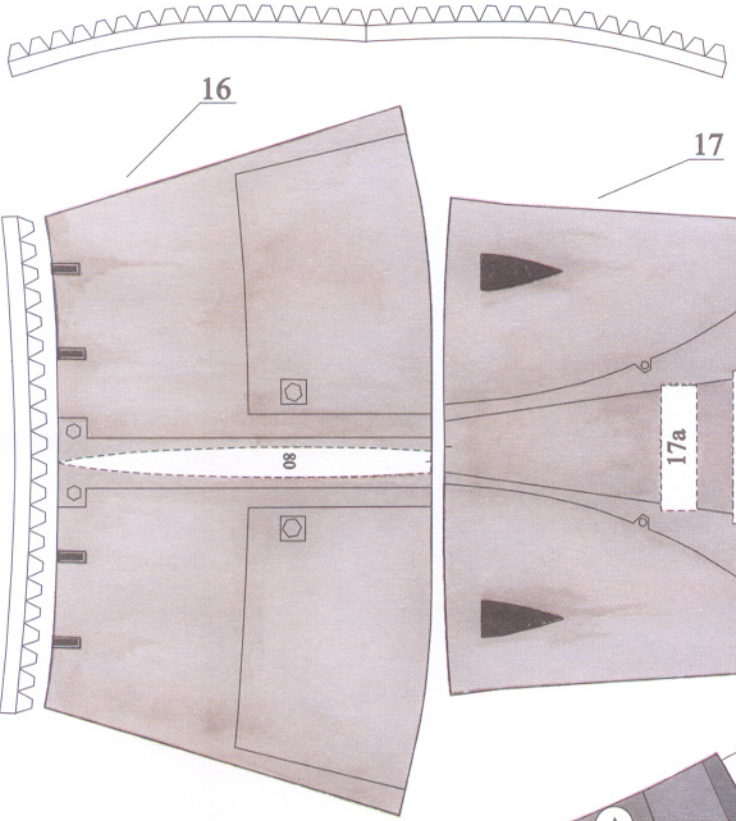




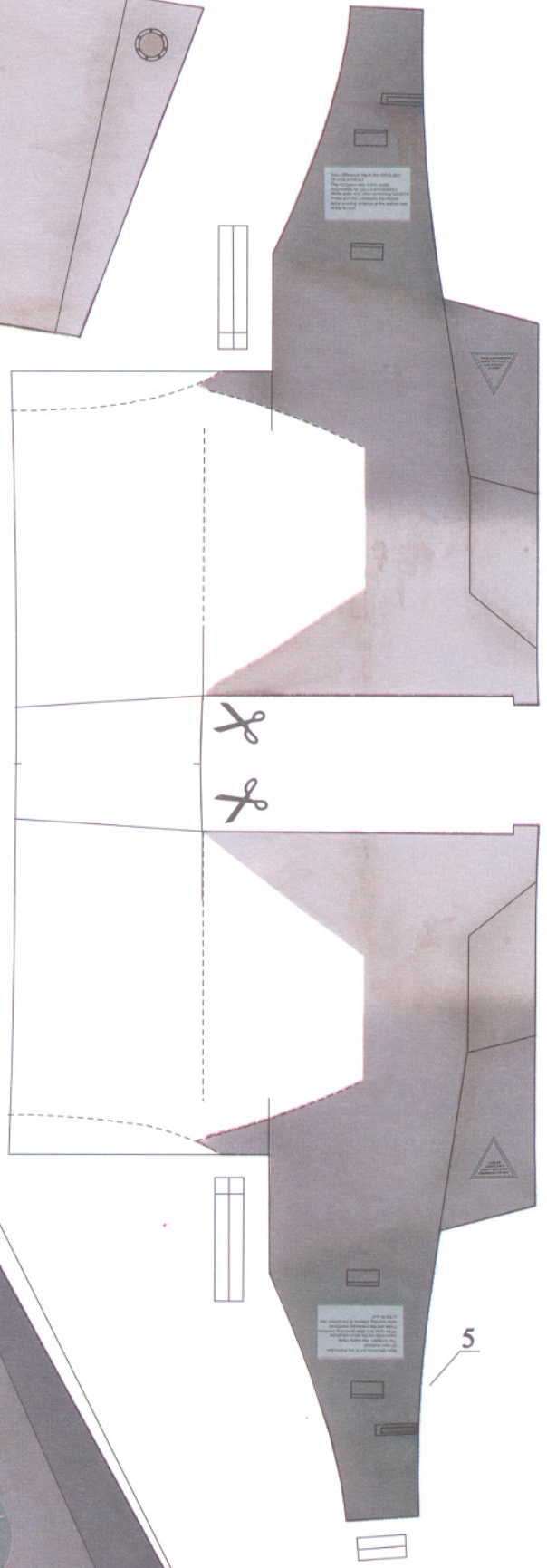
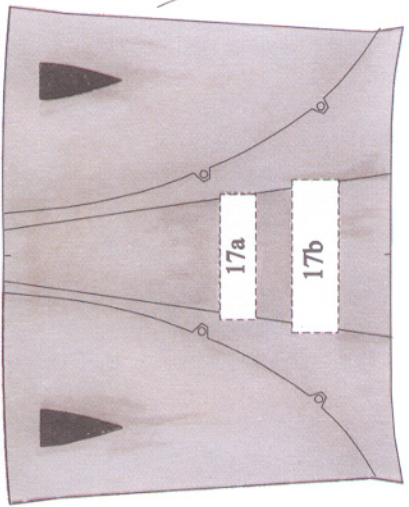
15



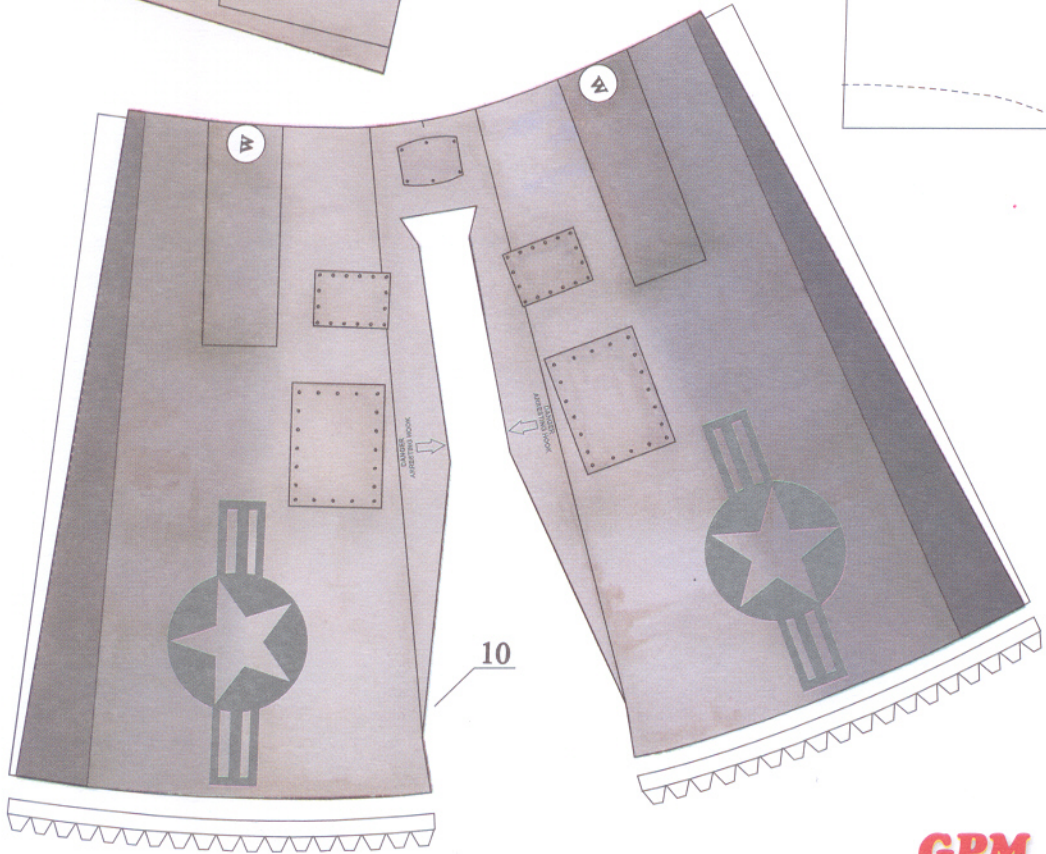
16



17



5

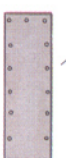


10

17a

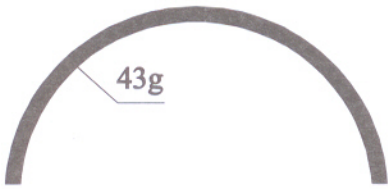


17b

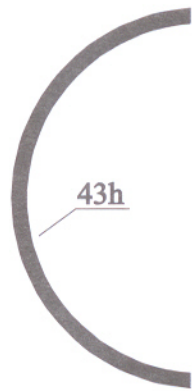


GPM

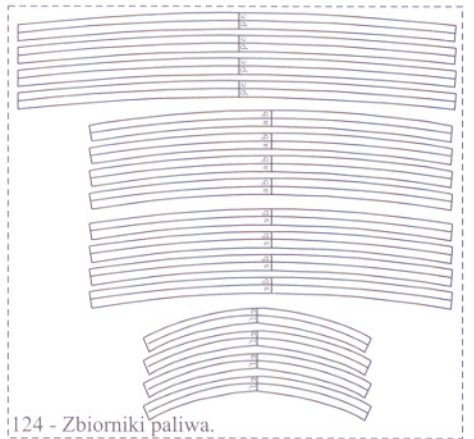
PROWLER 4



43g



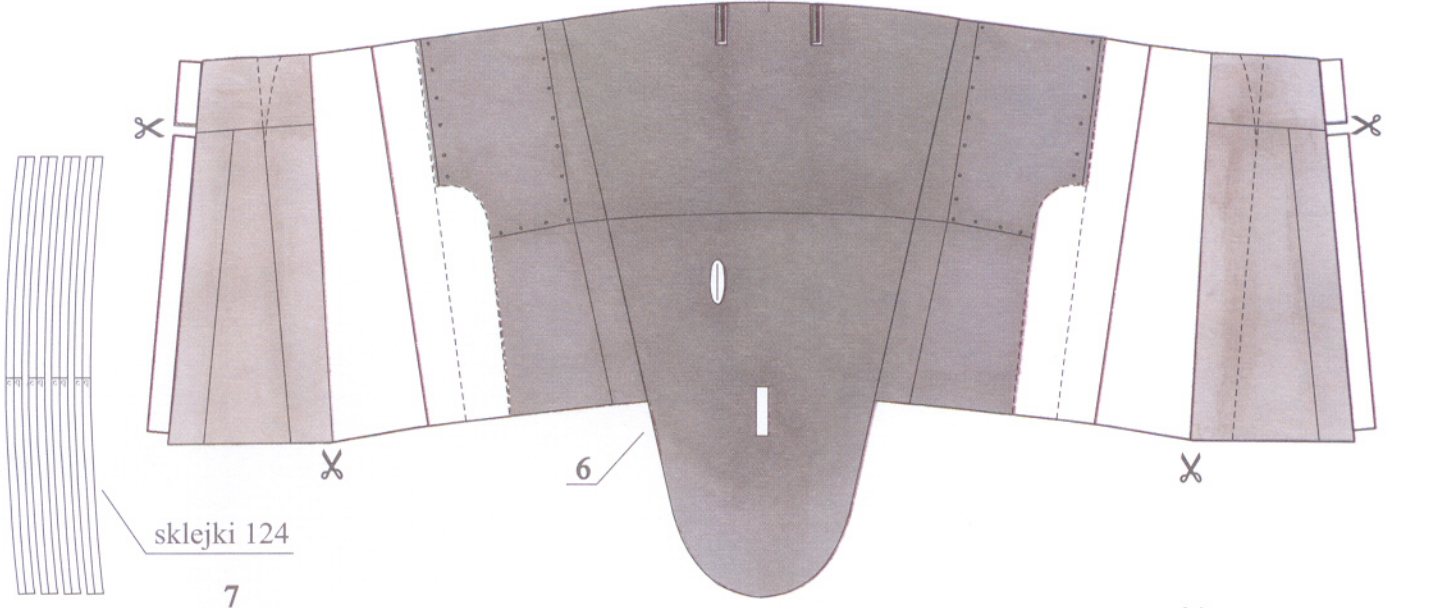
43h



124 - Zbiorniki paliwa.

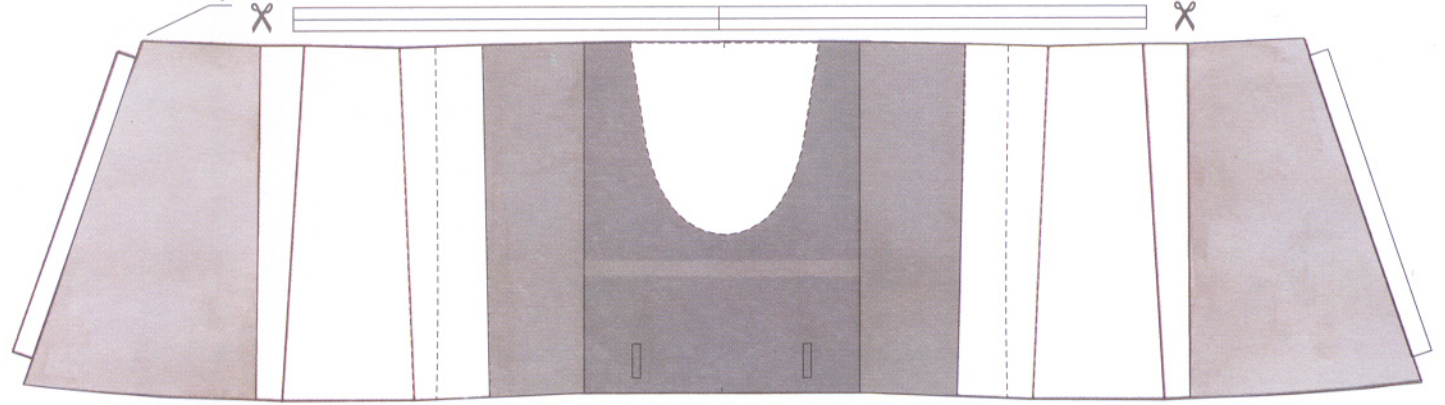


43f

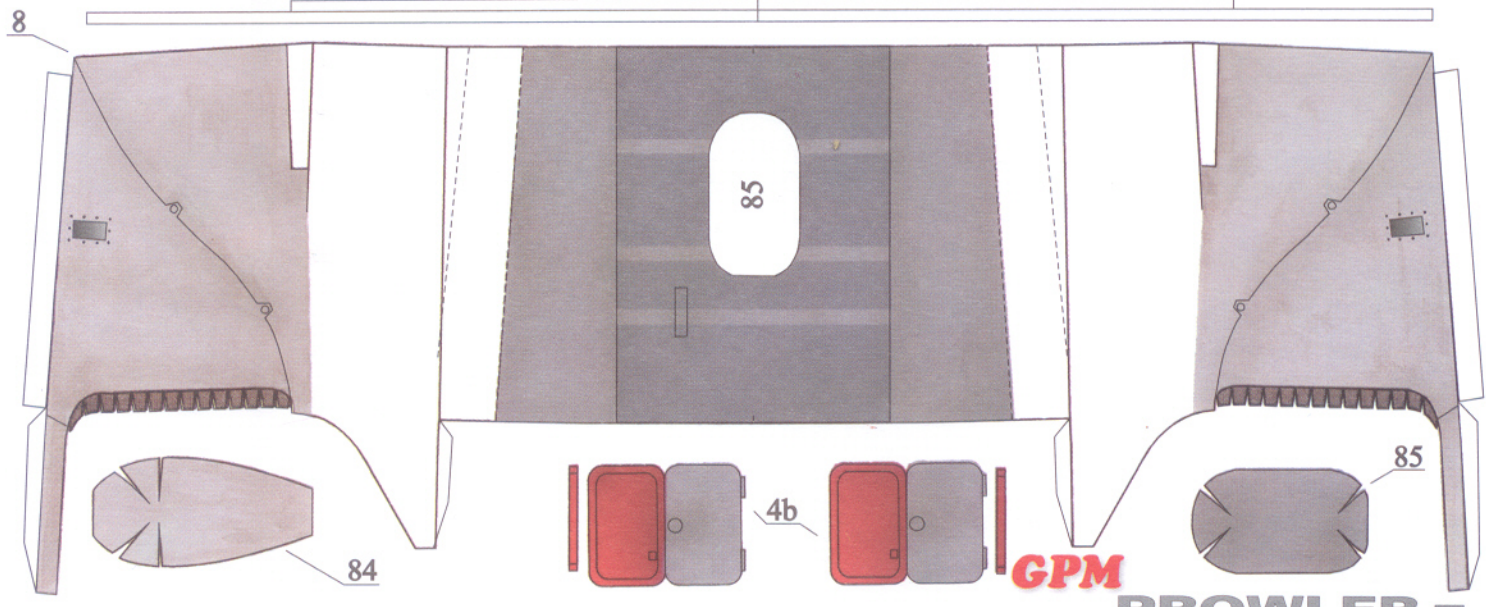


sklejki 124

6



7

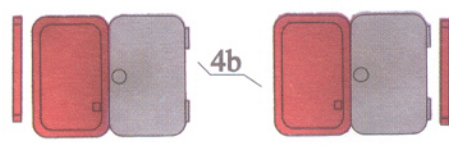


85

85

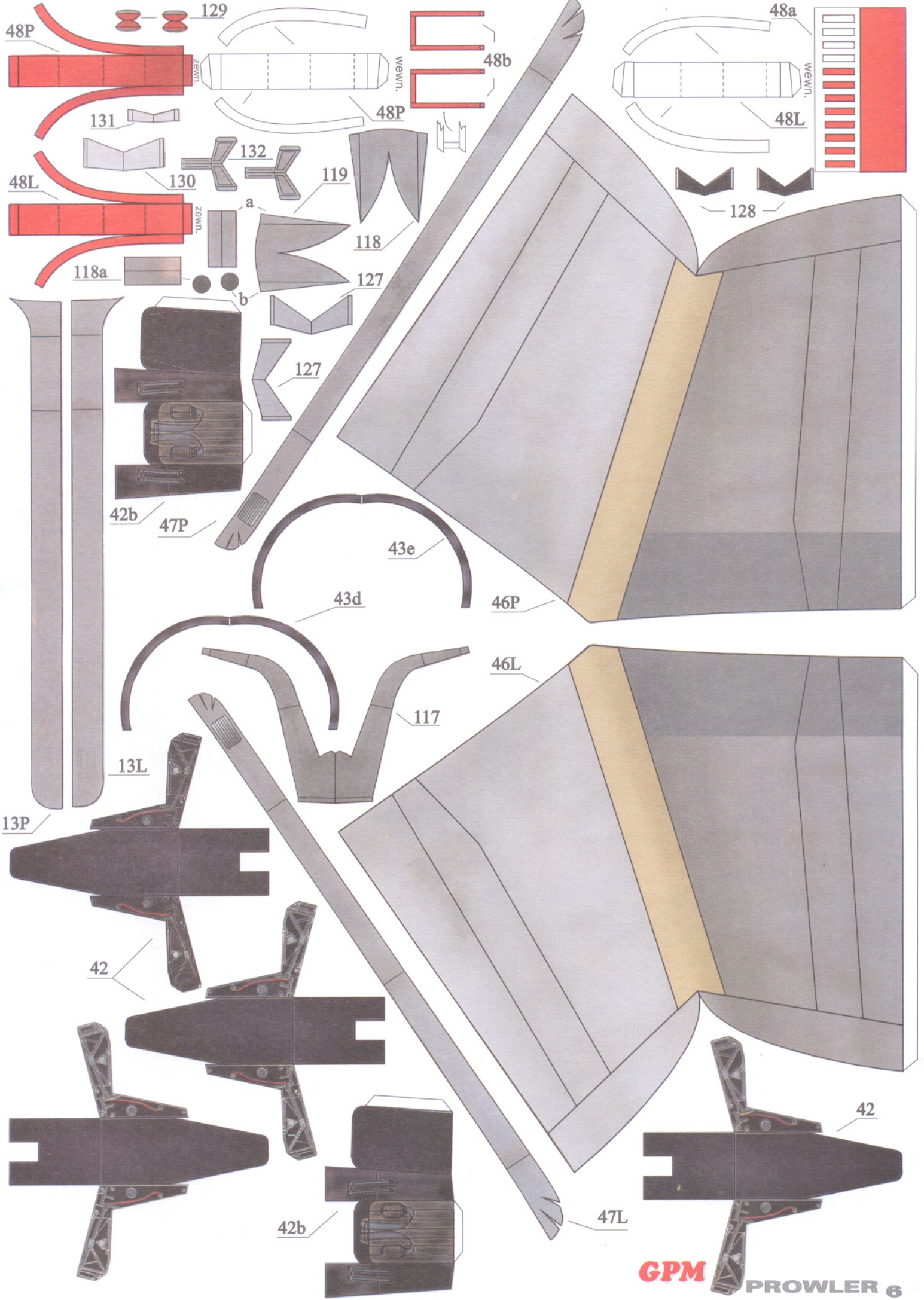
84

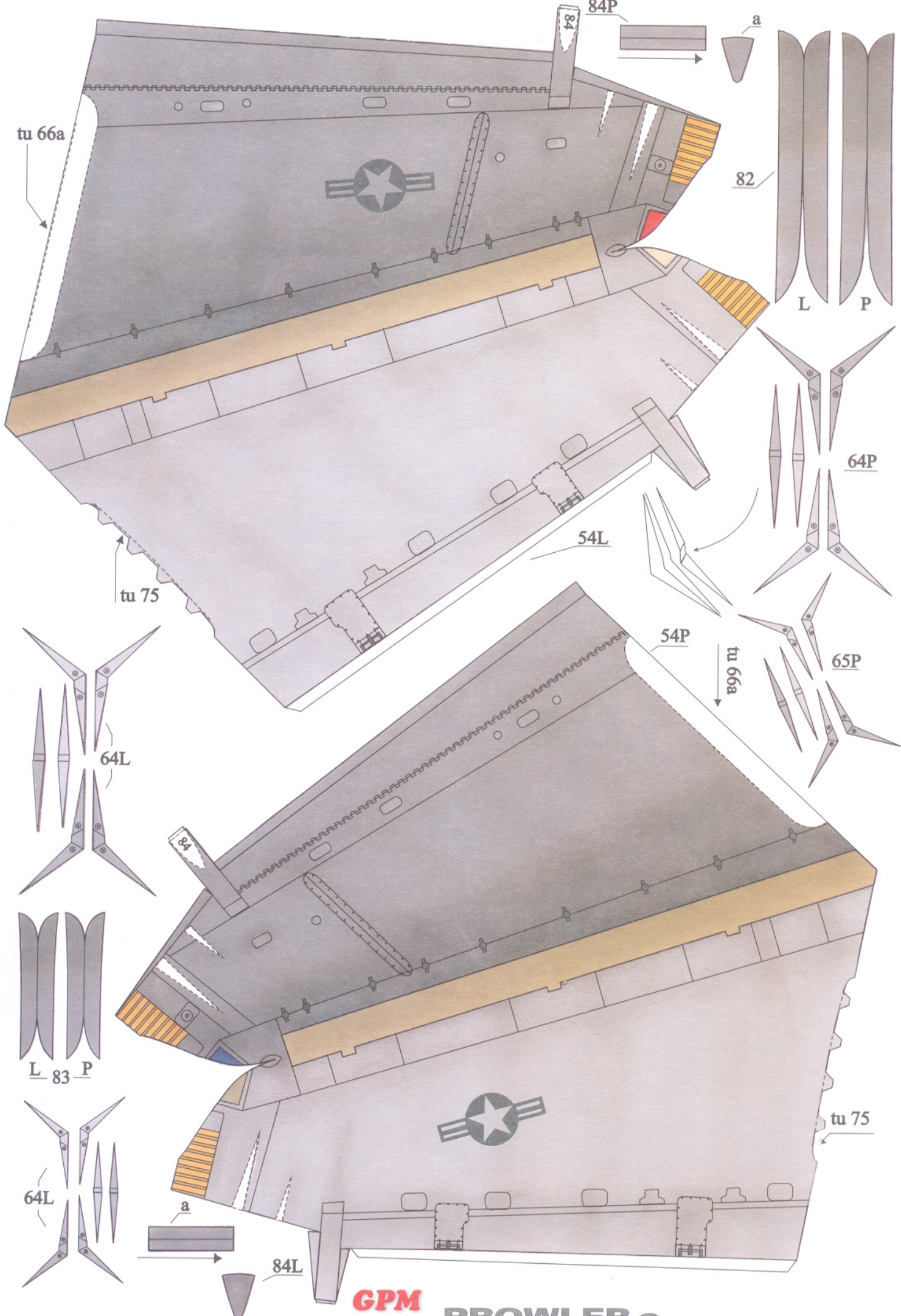
4b



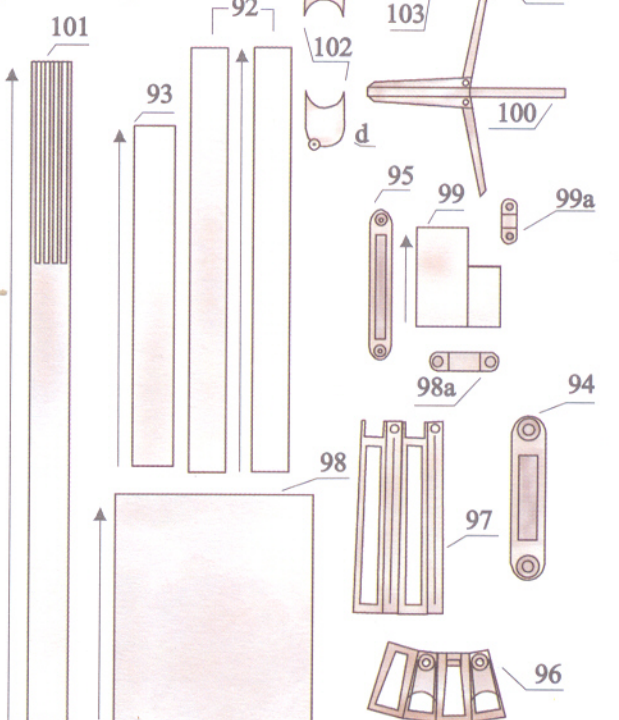
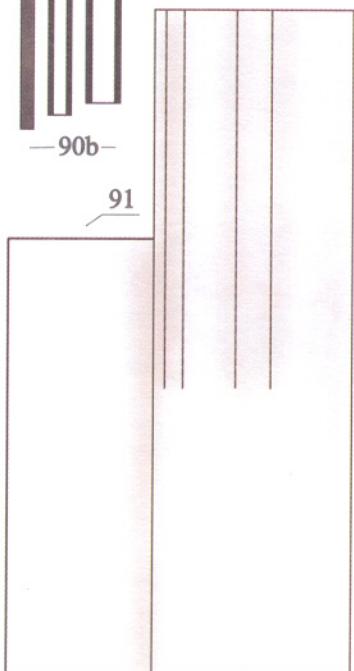
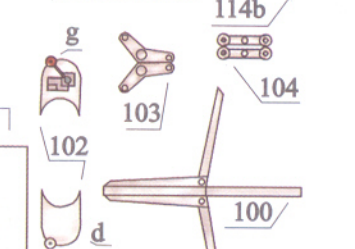
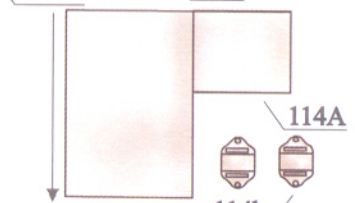
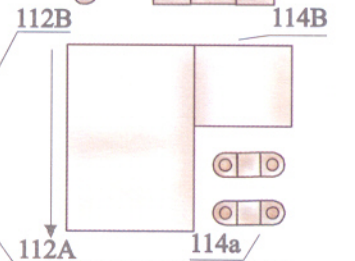
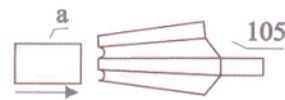
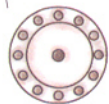
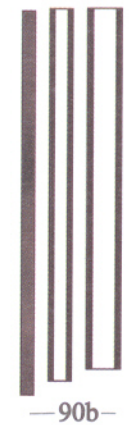
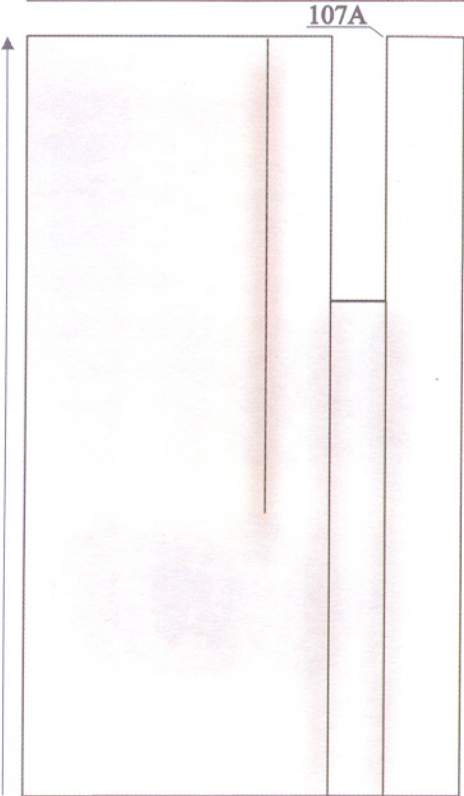
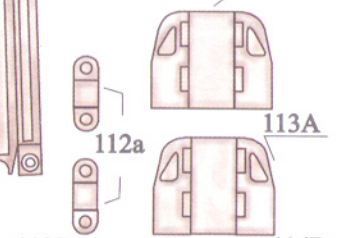
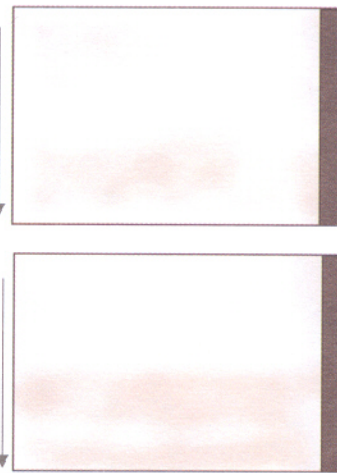
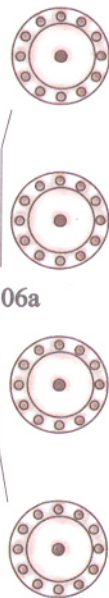
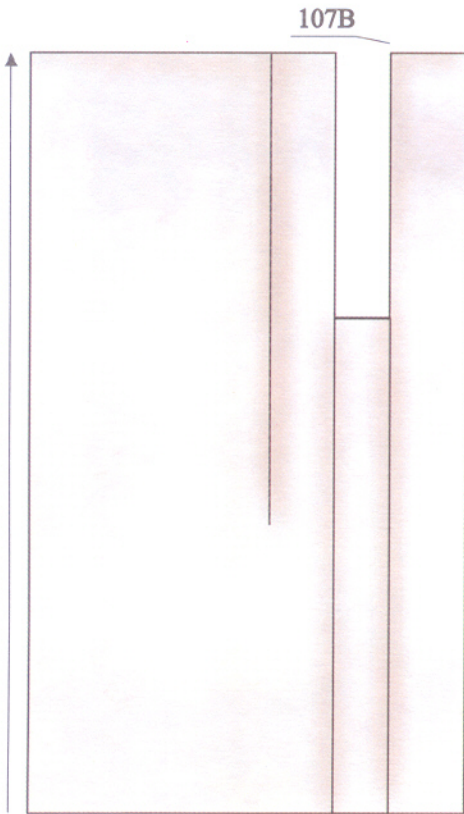
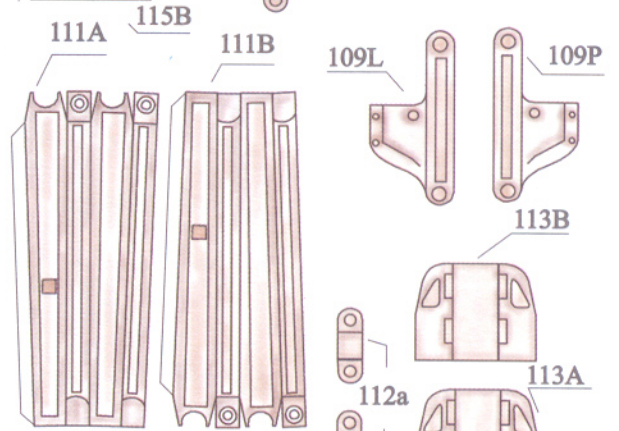
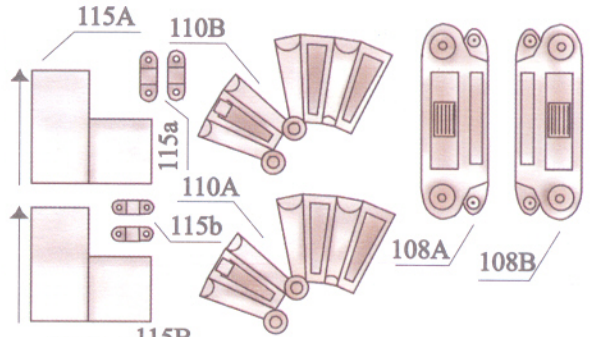
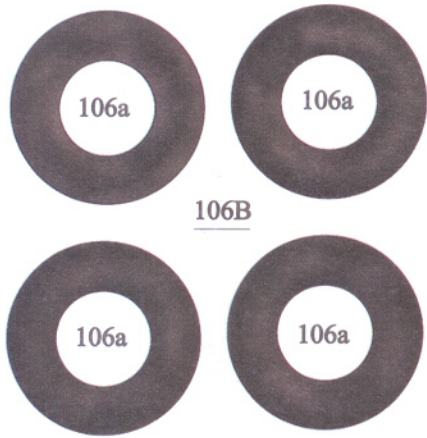
GPM

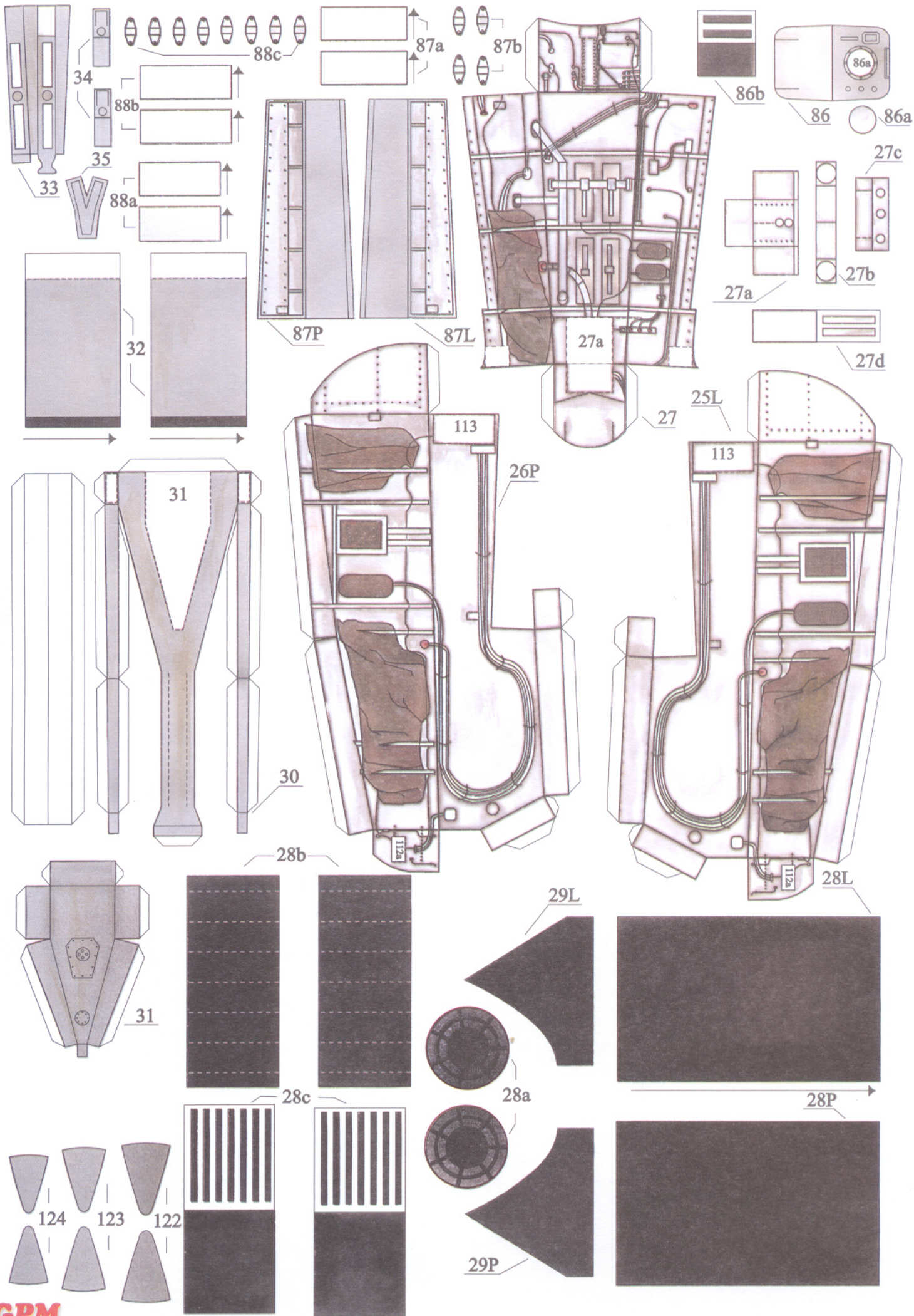
PROWLER 5





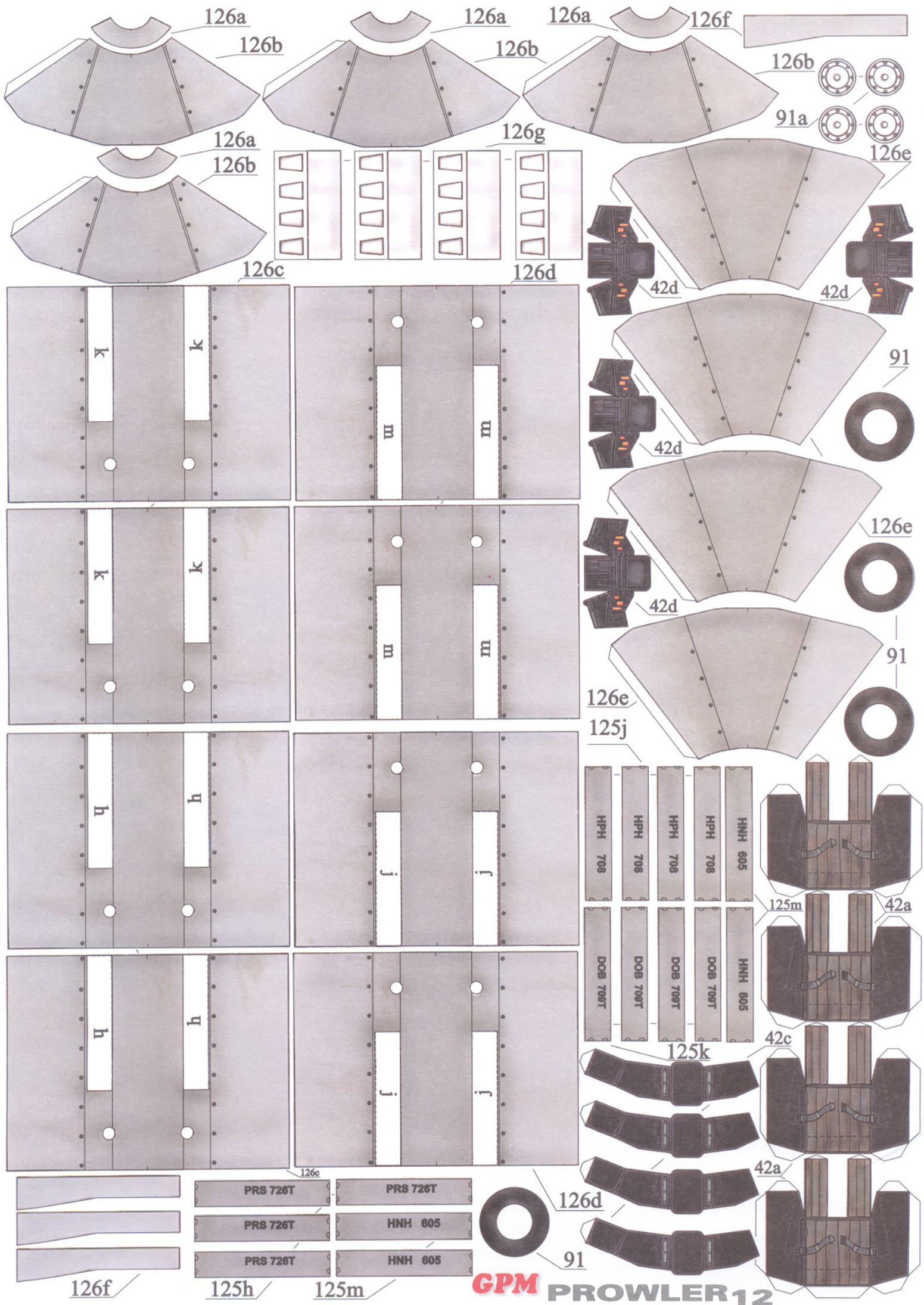
GPM PROWLER 9





GPM

PROWLER 11



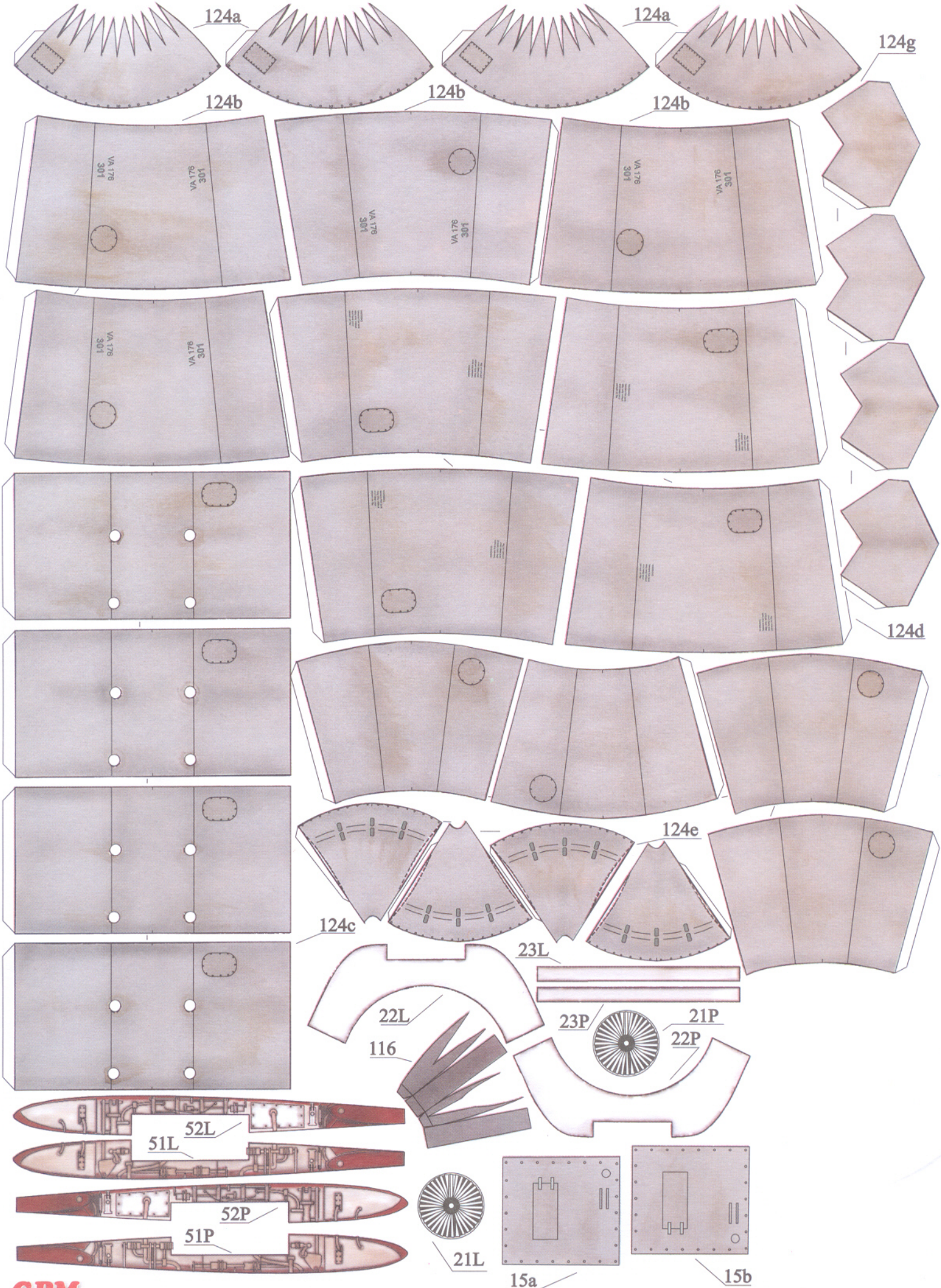
PRS 726T	PRS 726T
PRS 726T	HNH 605
PRS 726T	HNH 605

126f

125h

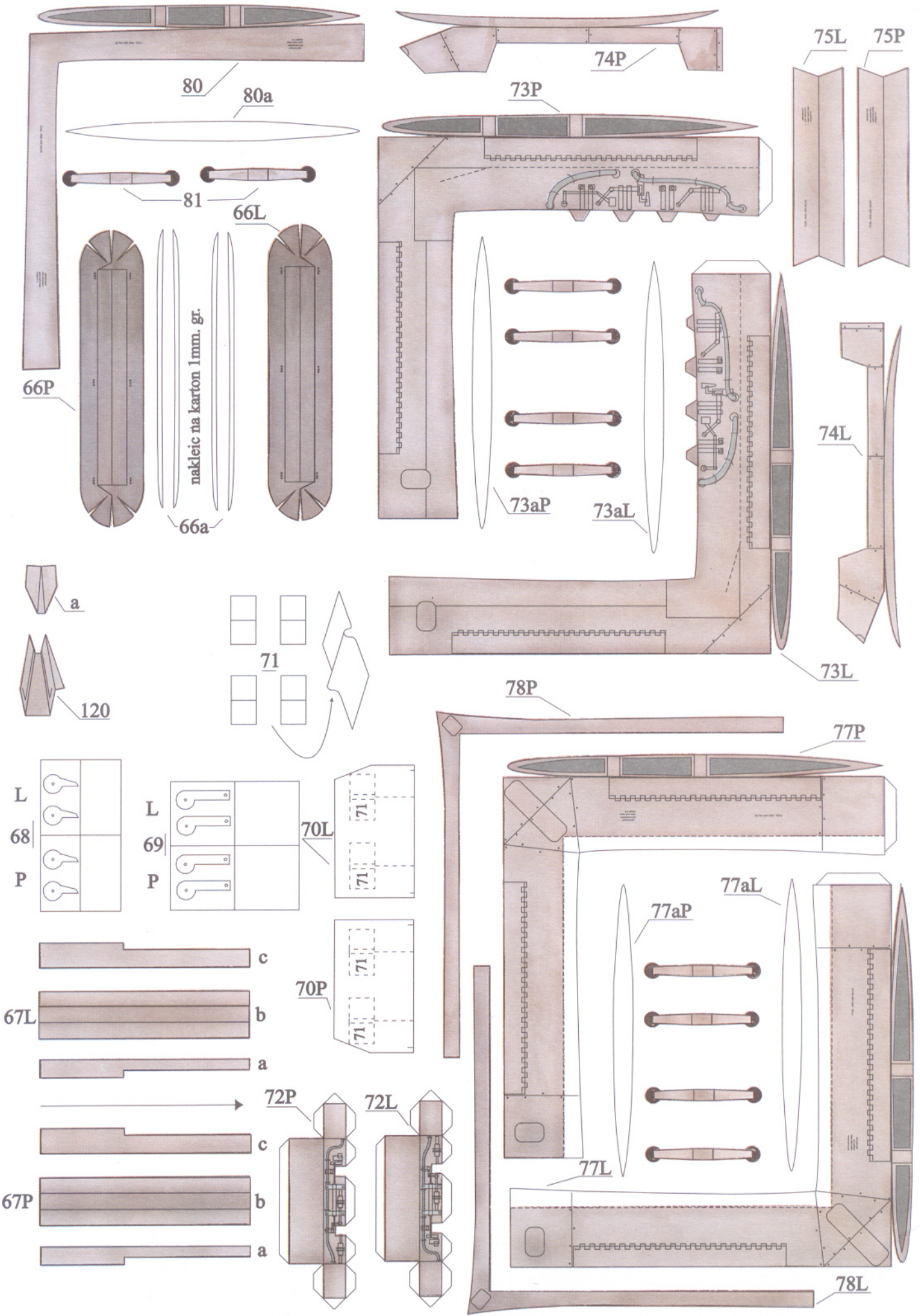
125m

GPM PROWLER 12



GPM

PROWLER 13



GPM

PROWLER 14

