

KARTONOWE  
**ABC** 8'98

ISSN 1428 - 4618

B-24 J

# LIBERATOR

## GPM

NR KAT. 048

SERIA "G"



STOPIEŃ  
TRUDNOŚCI

1

2

3

WYMIARY MODELU

DŁUGOŚĆ ..... 73 cm

ROZPIĘTOŚĆ ... 102 cm

WYSOKOŚĆ ..... 26 cm

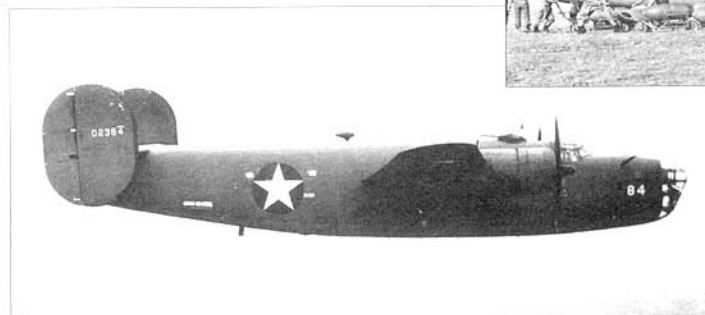
skala 1:33



# Samolot bombowy - B-24 J Liberator

opracowanie graficzne i opis: Tadeusz Grzelczak

Samolot B24 D "Liberator"



Samolot bombowy "Liberator" stanowił najliczniejszą grupę samolotów bojowych i był najliczniej wyprodukowanym samolotem bojowym w Stanach Zjednoczonych w okresie minionej wojny. Projekt "Liberator" powstał w biurze konstrukcyjnym pod kierunkiem inż. S. M. Laddona. Prototyp oznaczony X3-24 oblatano 29 grudnia 1939 r.

Walory lotne i bojowe nowej konstrukcji sprawiły, iż maszyna trafiła na taśmę montażową. Po przystąpieniu Stanów Zjednoczonych do wojny, "Liberatory" były produkowane w dużych ilościach.

B-24 występowały w wielu wersjach: B24A, XB-24, B24C, 24-D, E, G, H, I, L, M, na zamówienie St. Zjednoczonych i Wielkiej Brytanii.

Model, który będziecie budować przedstawia wersję B-24 J, z dodatkową wieżyczką zamontowaną na dziobie.

## Dane techniczne:

Załoga - 8-10 osób; rozpiętość - 33,53 m; długość - 22,58 m; wysokość - 7,67; prędkość maks. - 467 km/h; pułap - 8534 m; zasięg - 3379 km.

Całkowicie metalowy górnopłat z podwójnym usterzeniem kierunku. Półskorupowy kadłub, wielorzędowy. Skrzydła dwudźwigarowe o dużym wydłużeniu. Podwozie trójkołowe, wciągane w locie. Napęd: cztery silniki w układzie podwójnej gwiazdy 14 cylindrowy Pratt Whitney Twin Wasp: R1 830-43 o mocy 1200 KM. Uzbrojenie (zależne od wersji do 4 ruchomych stanowisk strzeleckich po 2 sprzężane k.m. kalibru 12,7 mm, 3 k.m. kalibru 7,7 mm. Bomby do 5800 kg.

## Opis budowy:

Uwagi ogólne:

Model należy do trudnych i pracochłonnych, wymaga cierpliwości i dokładności wykonania. Przed sklejaniem należy dokładnie zapoznać się z planem ogólnym modelu i rysunkami montażowymi. Stosujemy zasadę pasowania części "na sucho" przed sklejaniem.

- Części oznaczone literą L (P) - strona lewa (prawa)
- Części oznaczone gwiazdką - nakleić na tekturę o gr. ok. 1 mm.

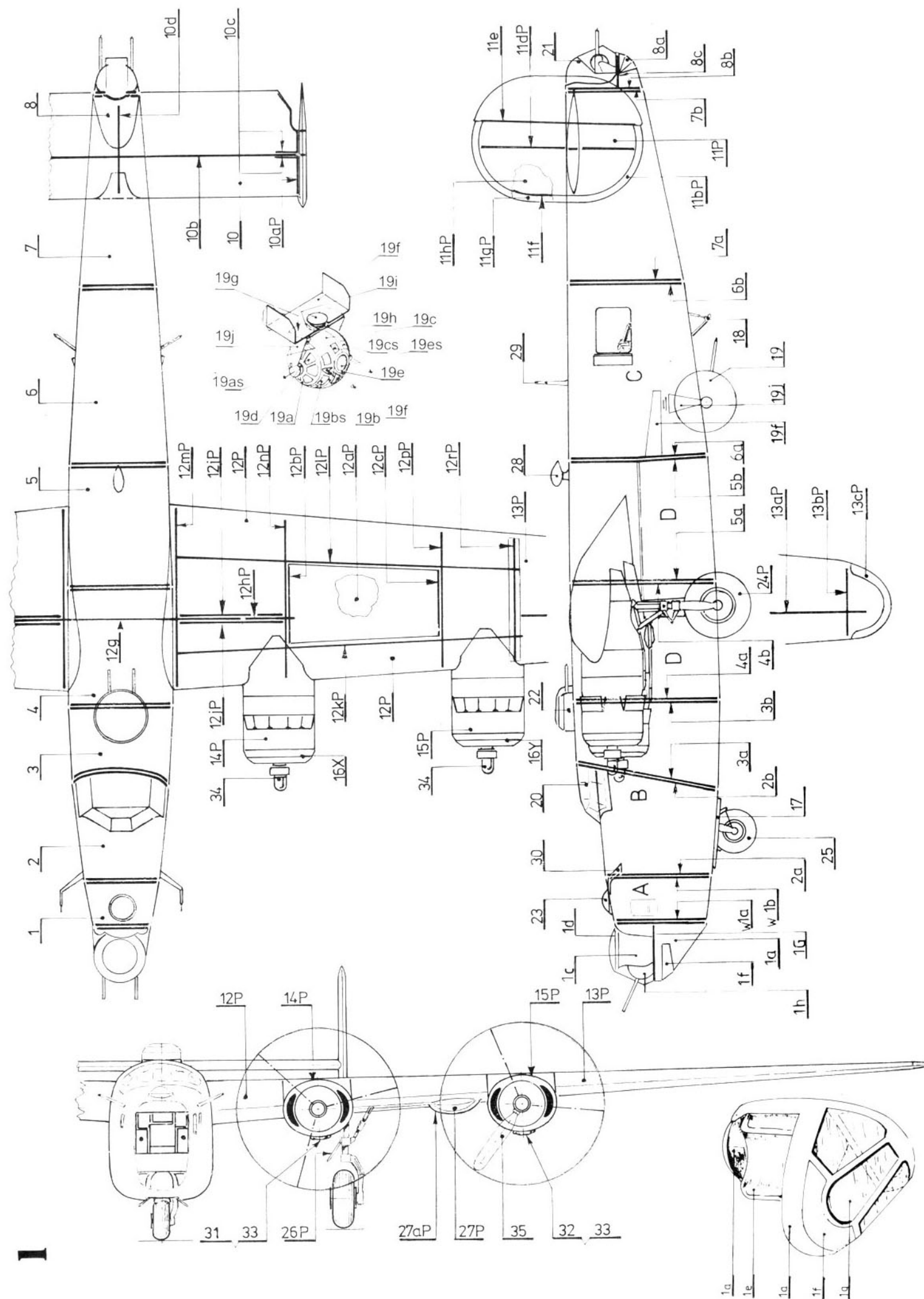
Budowę modelu rozpoczynamy od sklejania kadłuba, dokładnie posługując się planem i rysunkami montażowymi. W przypadku budowy modelu z wnętrzem wykorzystujemy części oznaczone literami: A, B, C, D. O dalszej kolejności budowy modelu, jego zespołów, i elementów, decyduje wykonawca.

W celu prawidłowego wykonania modelu ograniczamy się do kilku niezbędnych uwag:

- przy budowie modelu z otwartą komorą bombową należy wręgi: 4a, 4b, 5a, 4, 5, w miejscach oznaczonych odciąć, wg rys. 12.
- oszkleńcie wykonać należy ściśle wg szablonów (1:1)
- pomalować na kolor szary odwrotną stroną cz.: 19a, 19b, 19cL, 19cP, 19dL, 19dP, 19eL, 19eP, 19fL, 19fP, 20, 20d, 20b, 21a, 21b
- gondole podwozia głównego wykonać należy w kolejności, cz.: 12aP, 12bP, 12cP, wkleić w kratownicę wykonaną z cz.: 12KP, 12LP, 12NP, 12MP; dopiero teraz doklejamy cz. 12P.

Pozostałe części sklejamy wg rys. montażowych i planu ogólnego modelu.

Życzymy udanej zabawy!

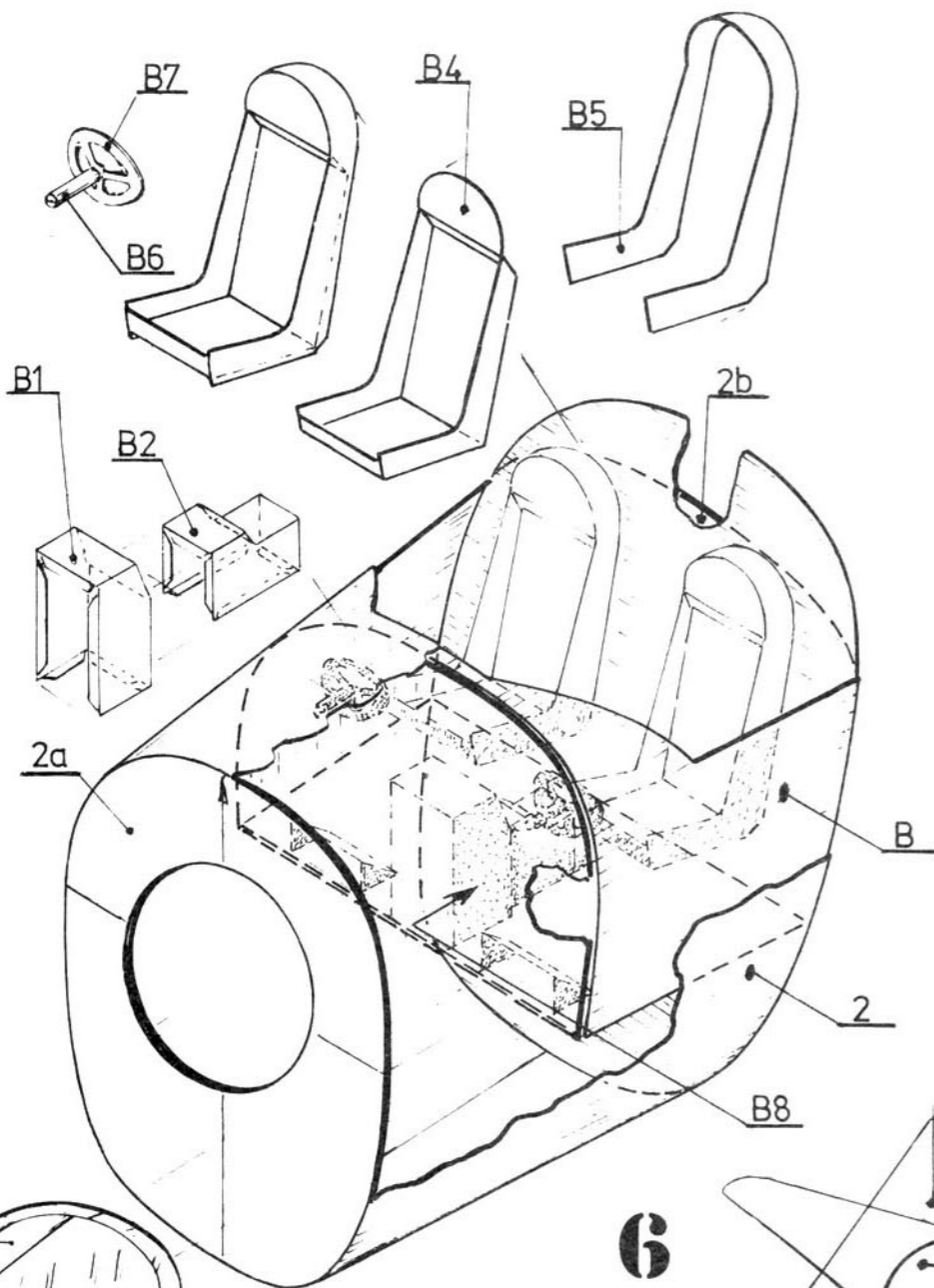


Kartonowe ABC 8/98  
"B-24J LIBERATOR" (nr kat. 048)

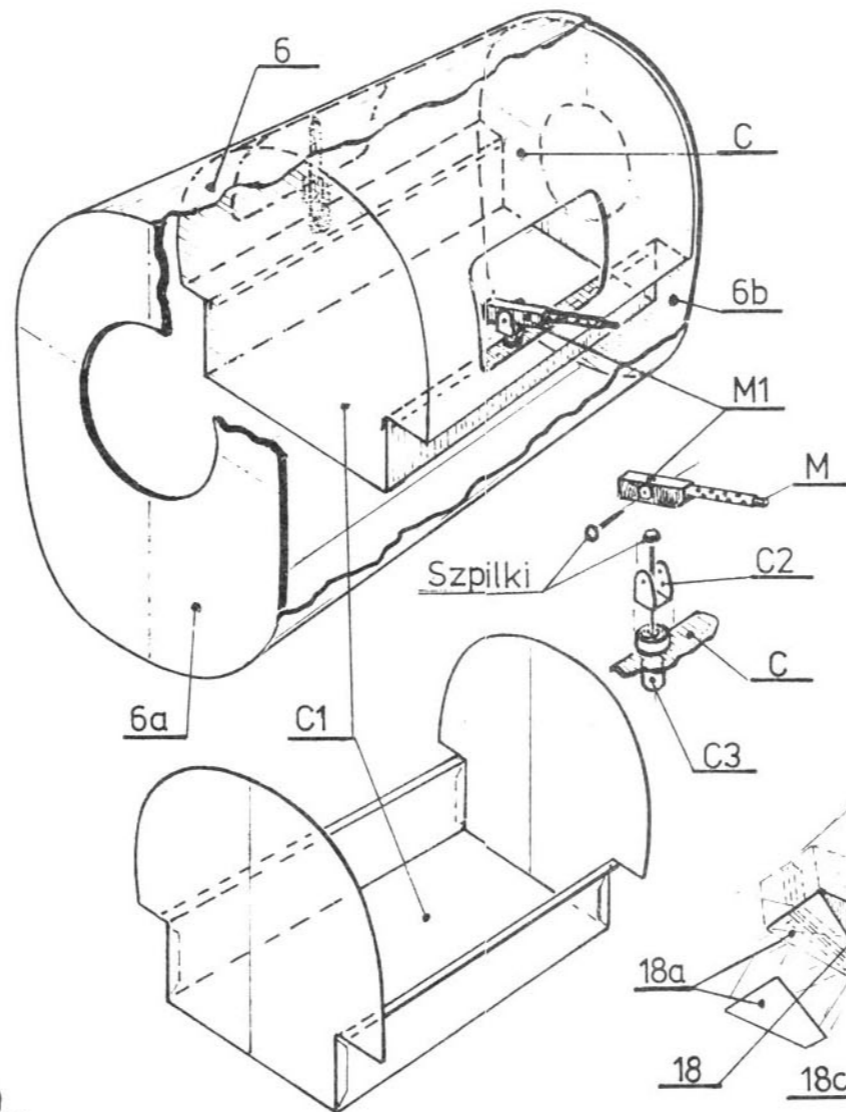
ISSN 1428 - 4618

Wydawca: "GPM" Łódź, ul. Zgierska 73 tel./fax (0-42) 57-94-40  
Adres korespondencyjny: 90-954 Łódź 4 skr. poczt. 13  
Wszelkie prawa zastrzeżone.  
Przedruk i kopiowanie jedynie za zgodą redakcji

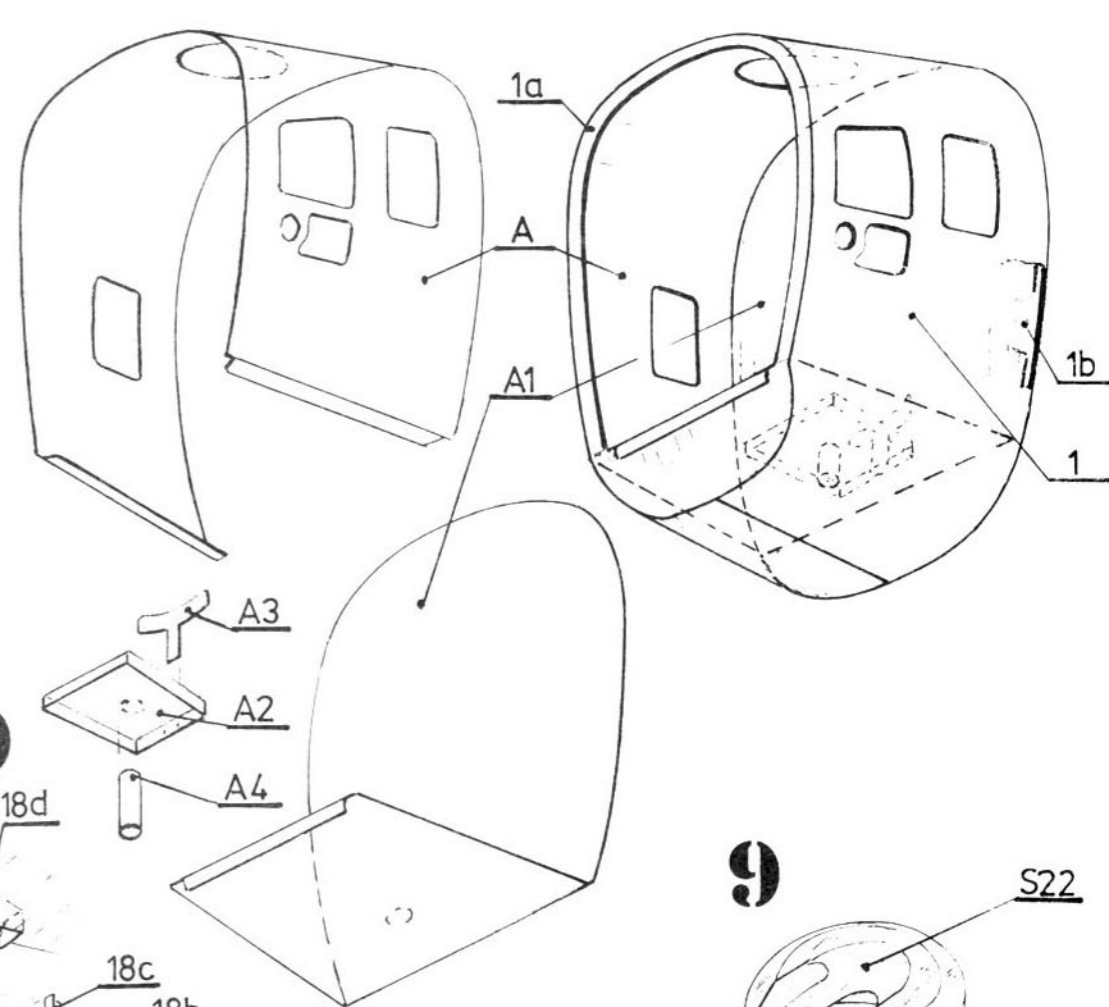
3



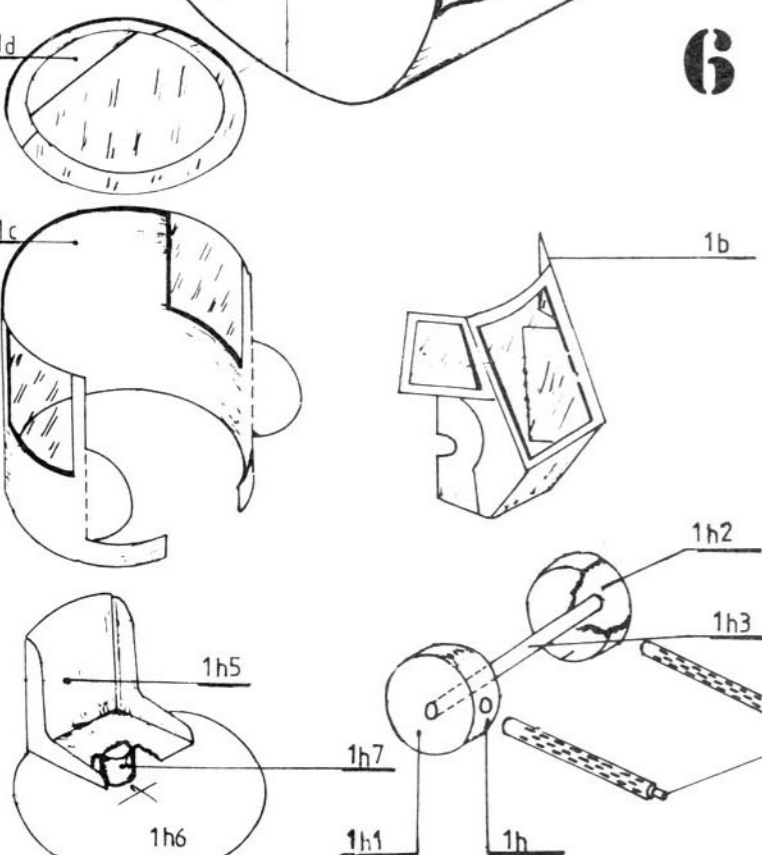
4



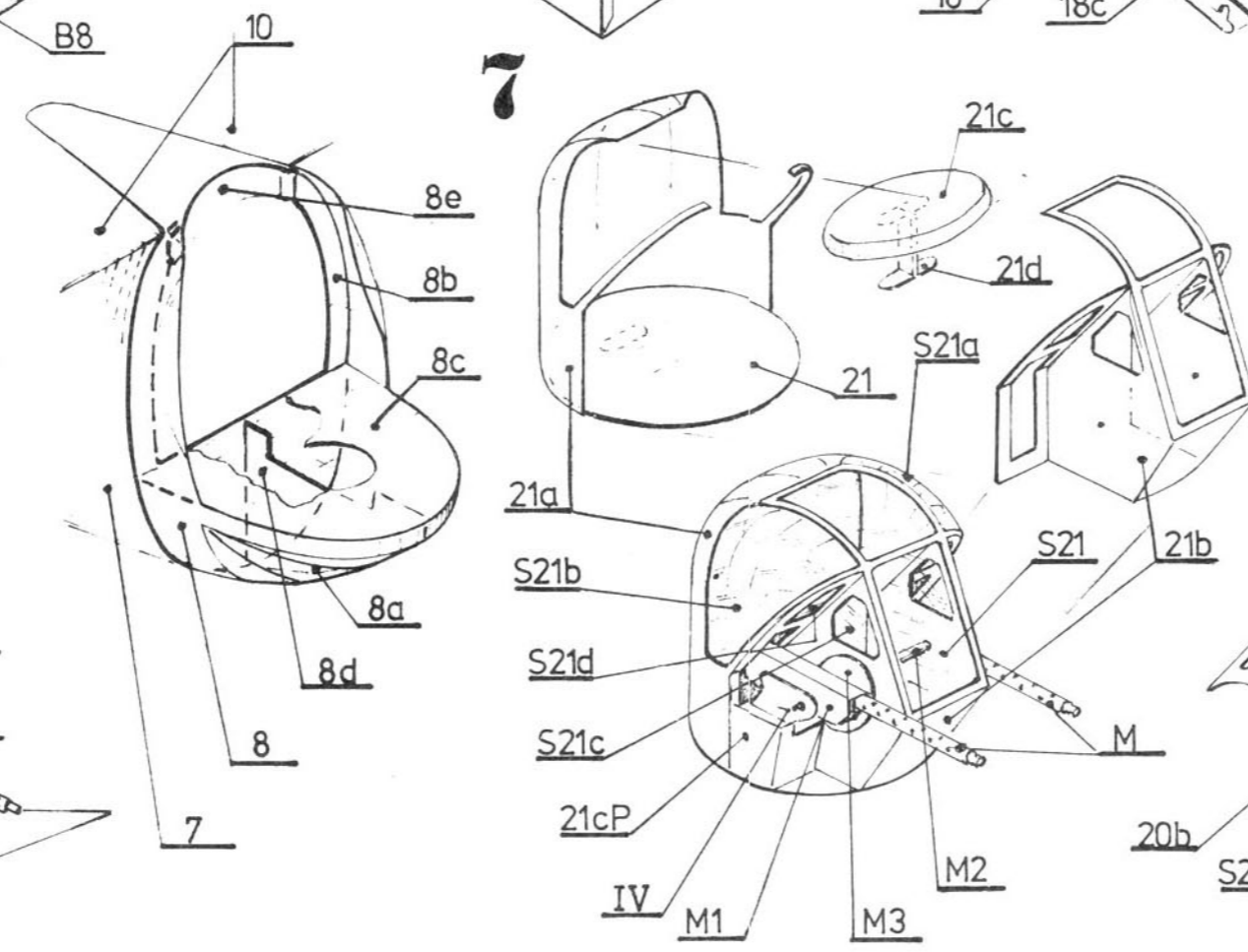
2



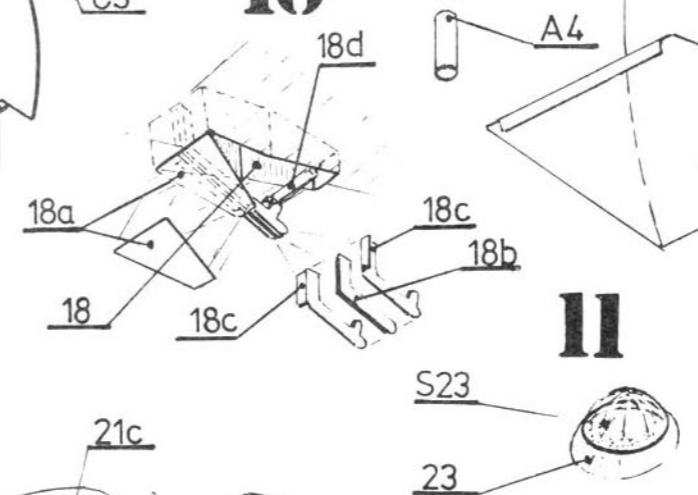
6



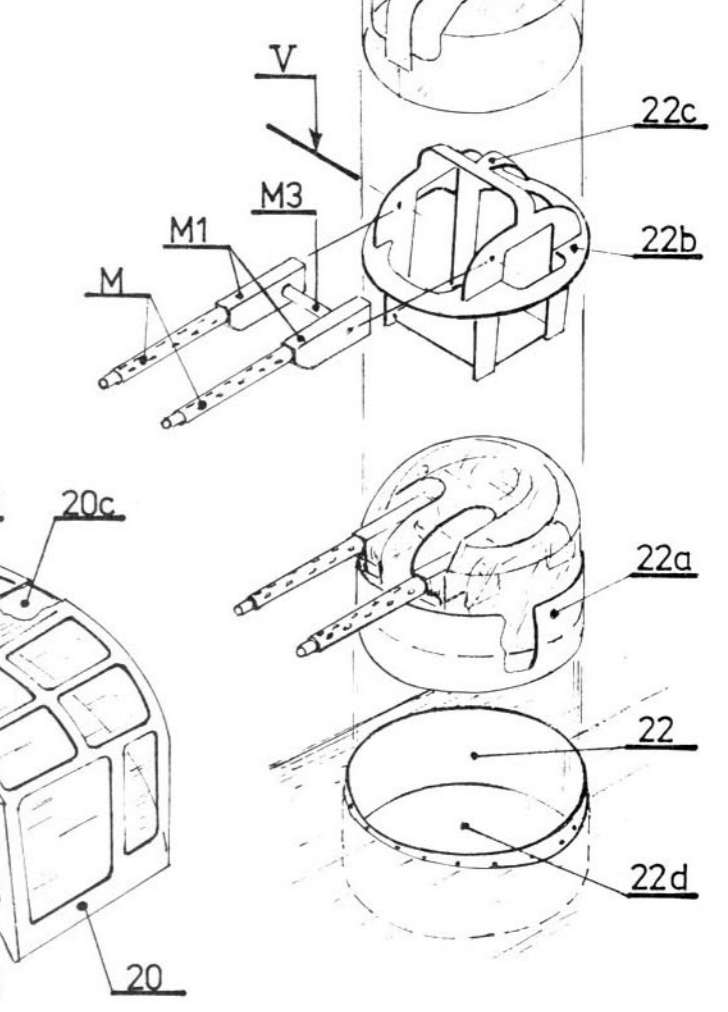
7



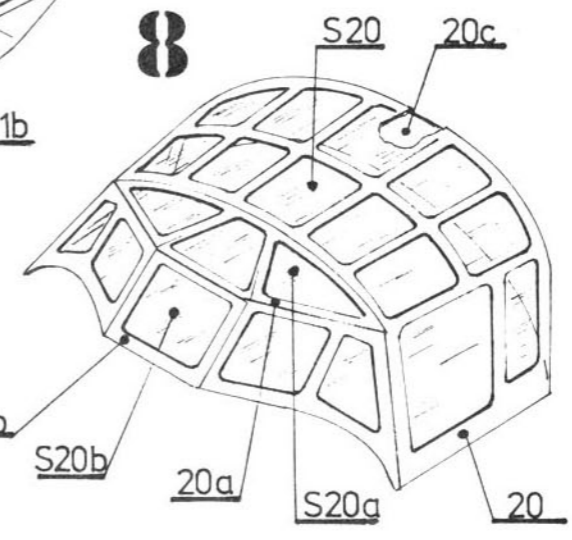
10



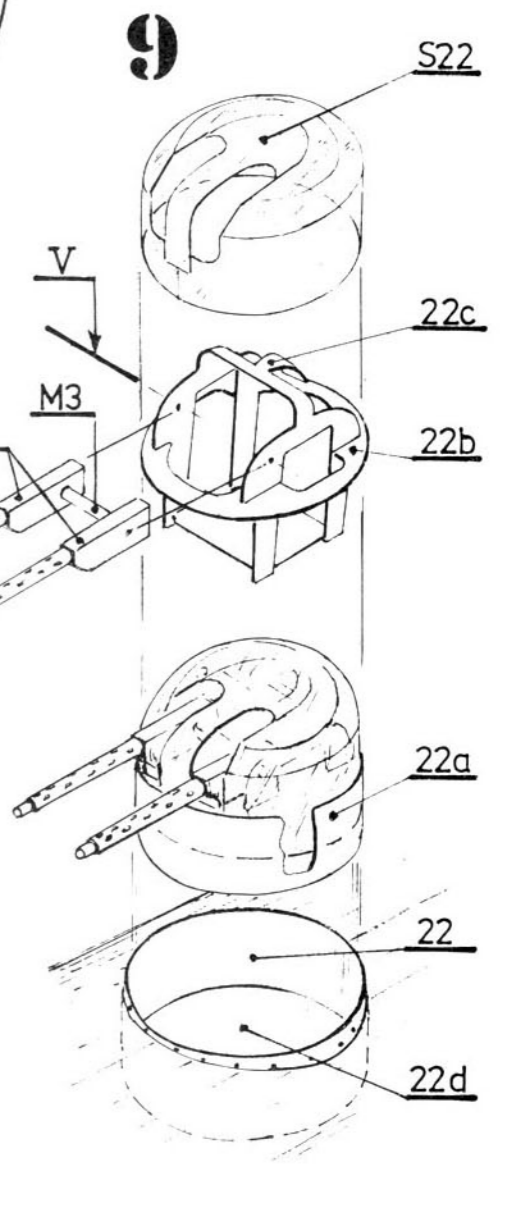
11



8



9

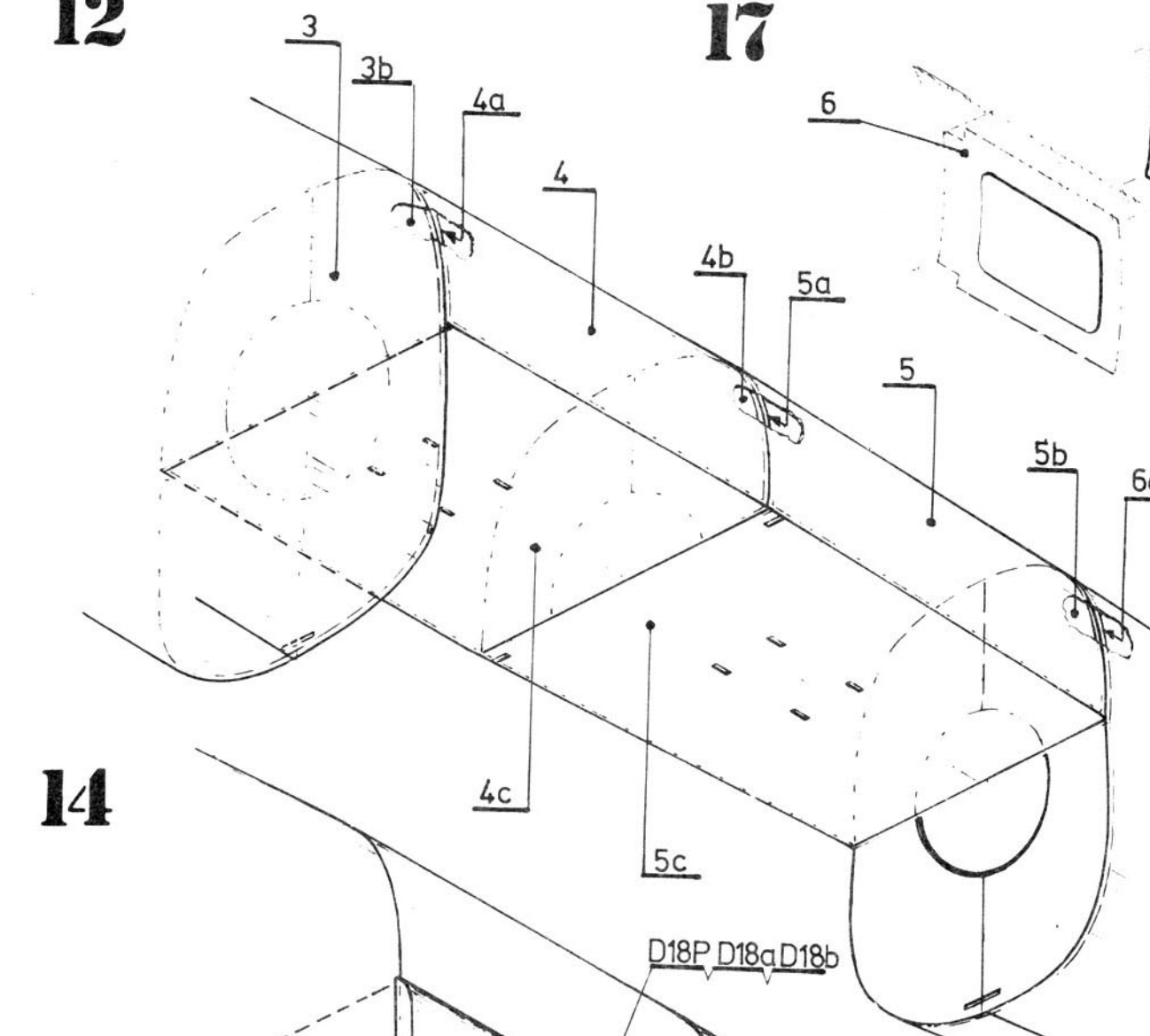


12

17

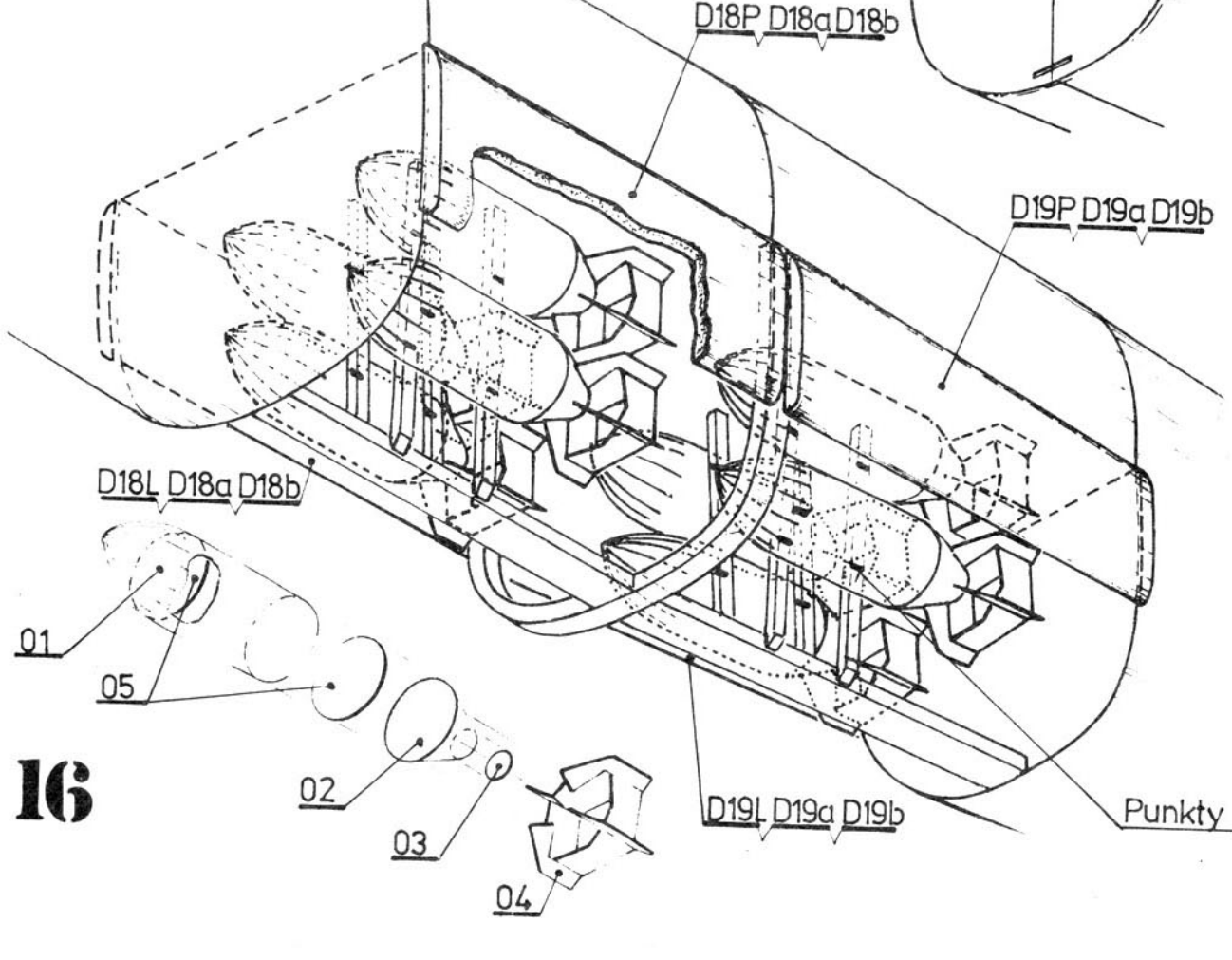
13

15

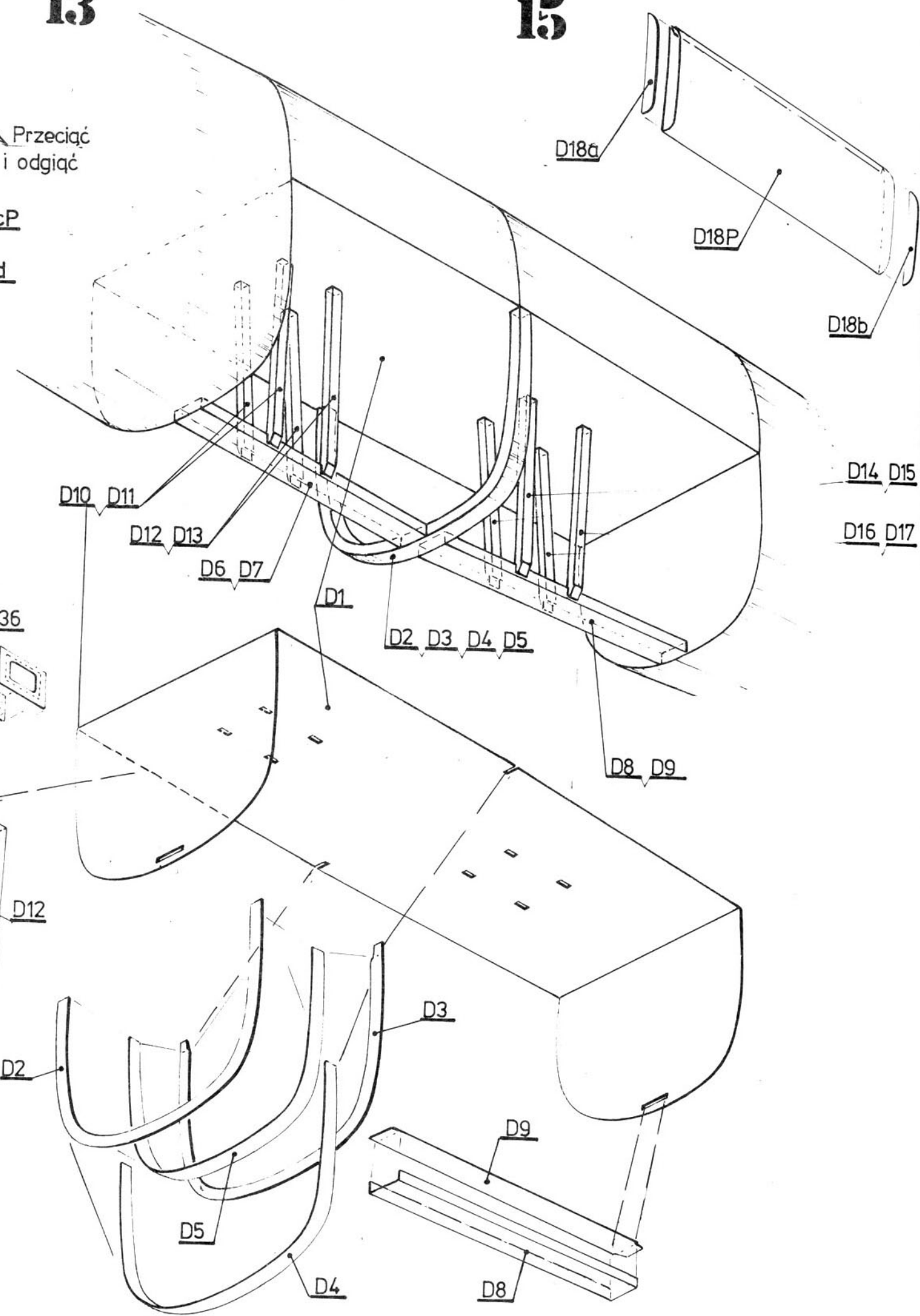


14

18

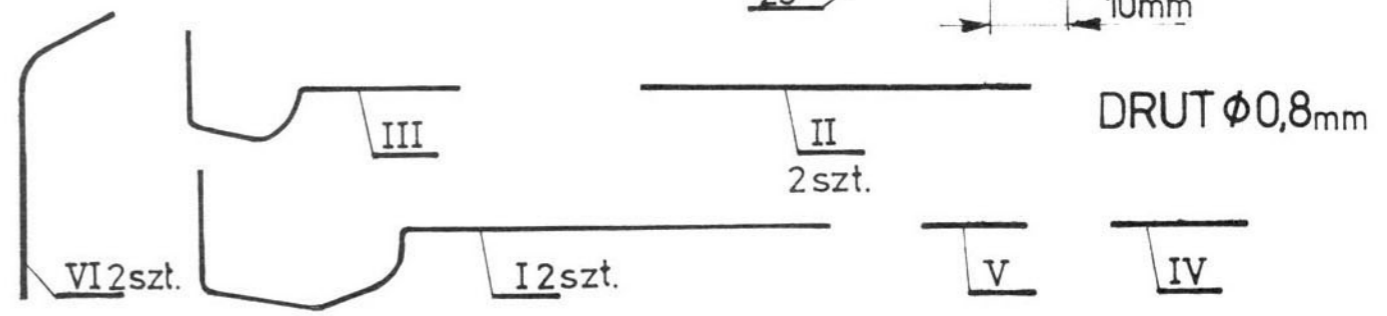
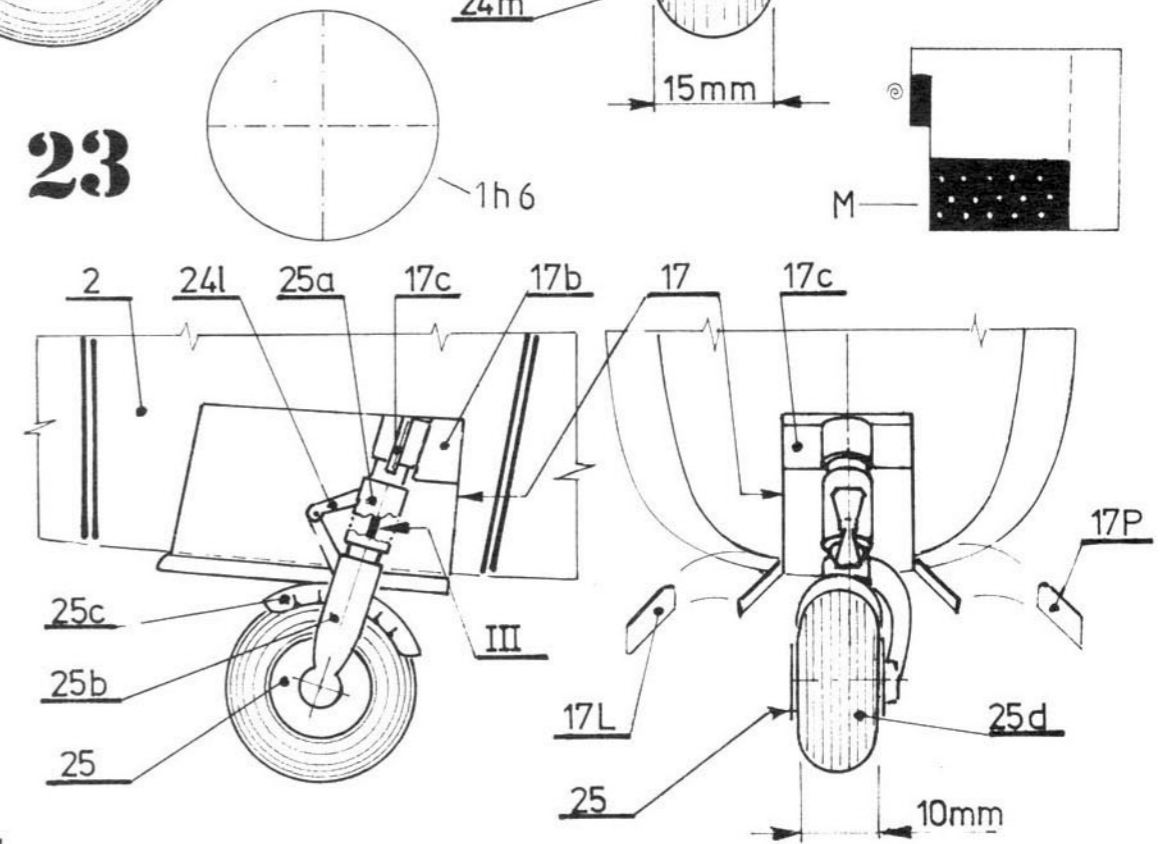
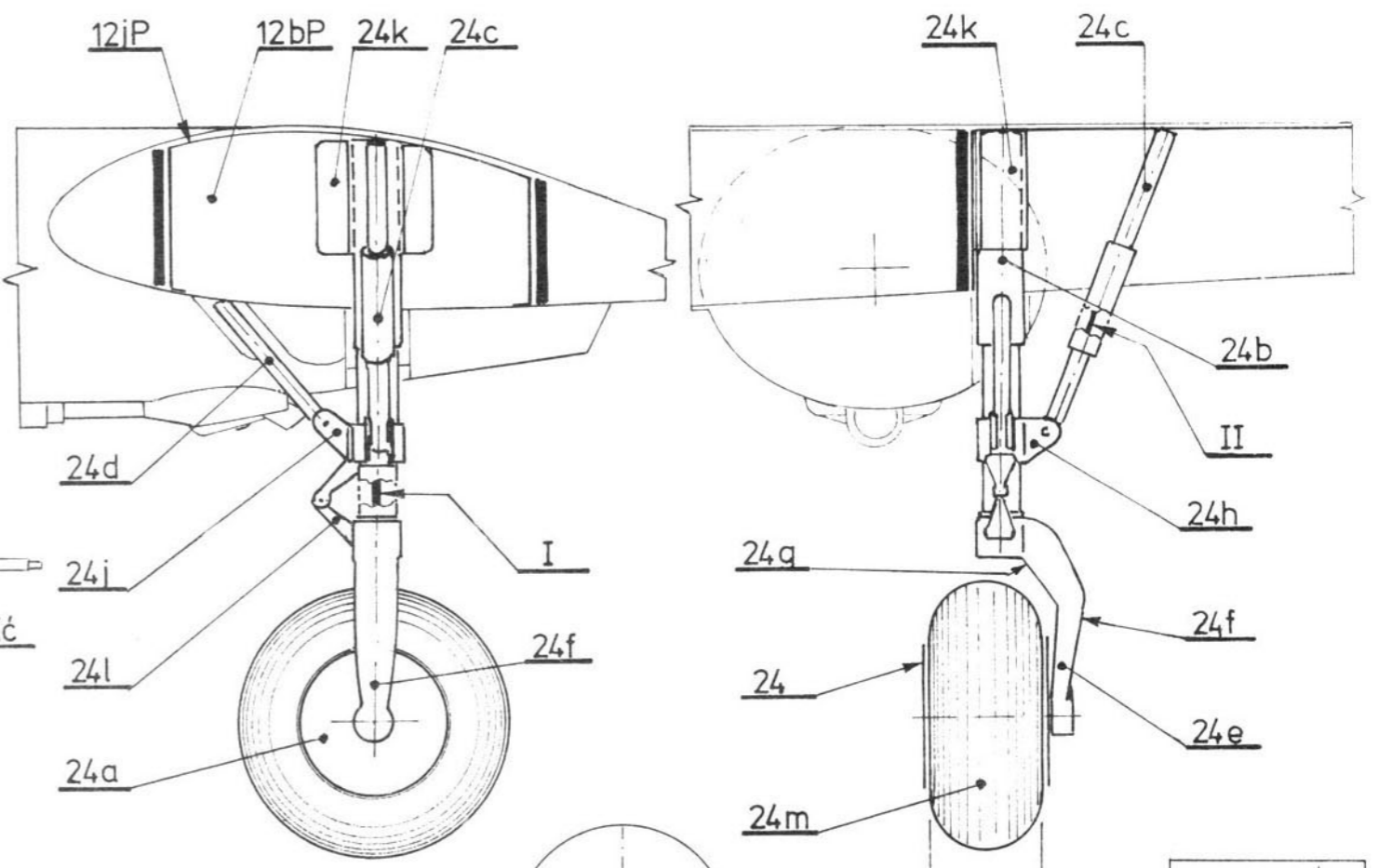
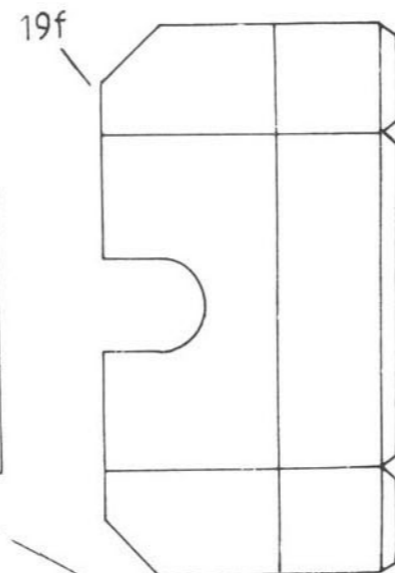
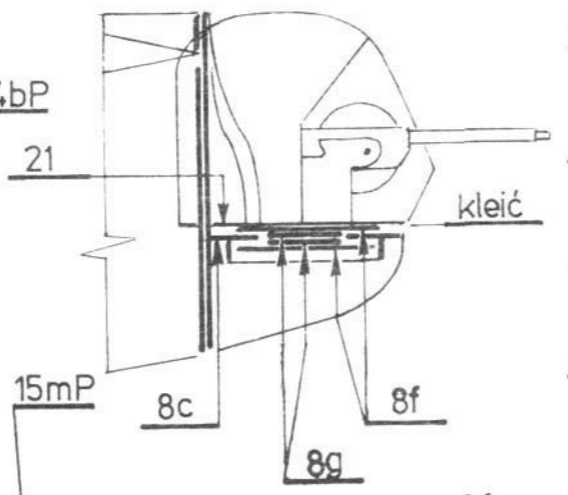
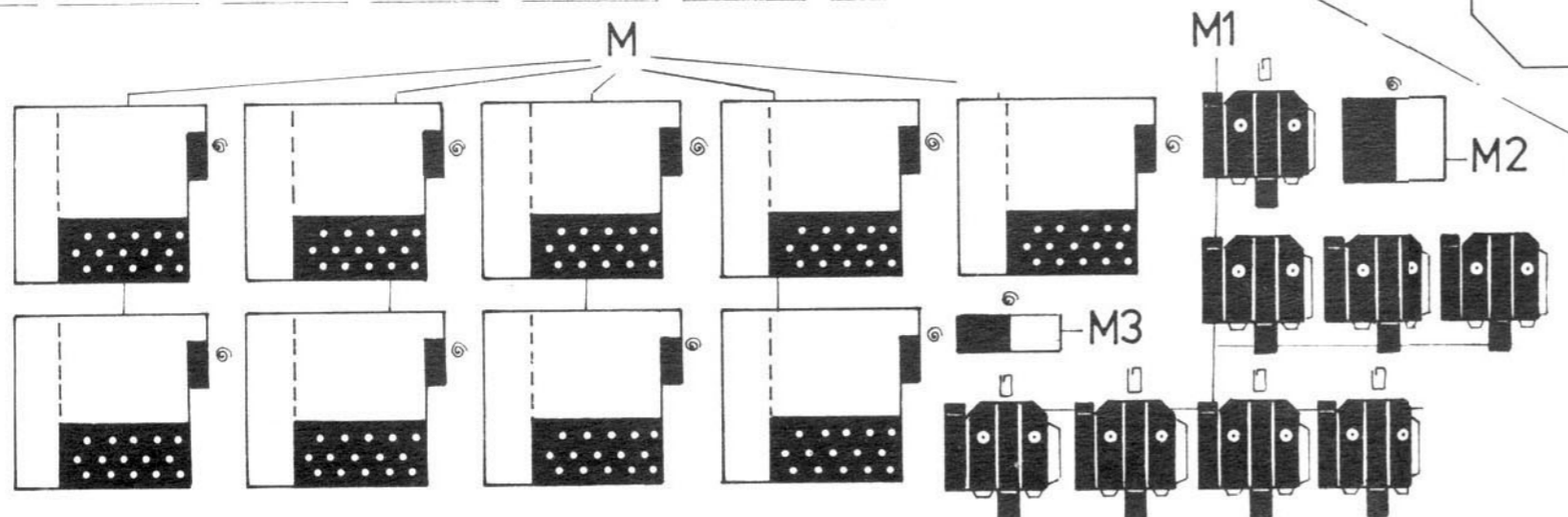
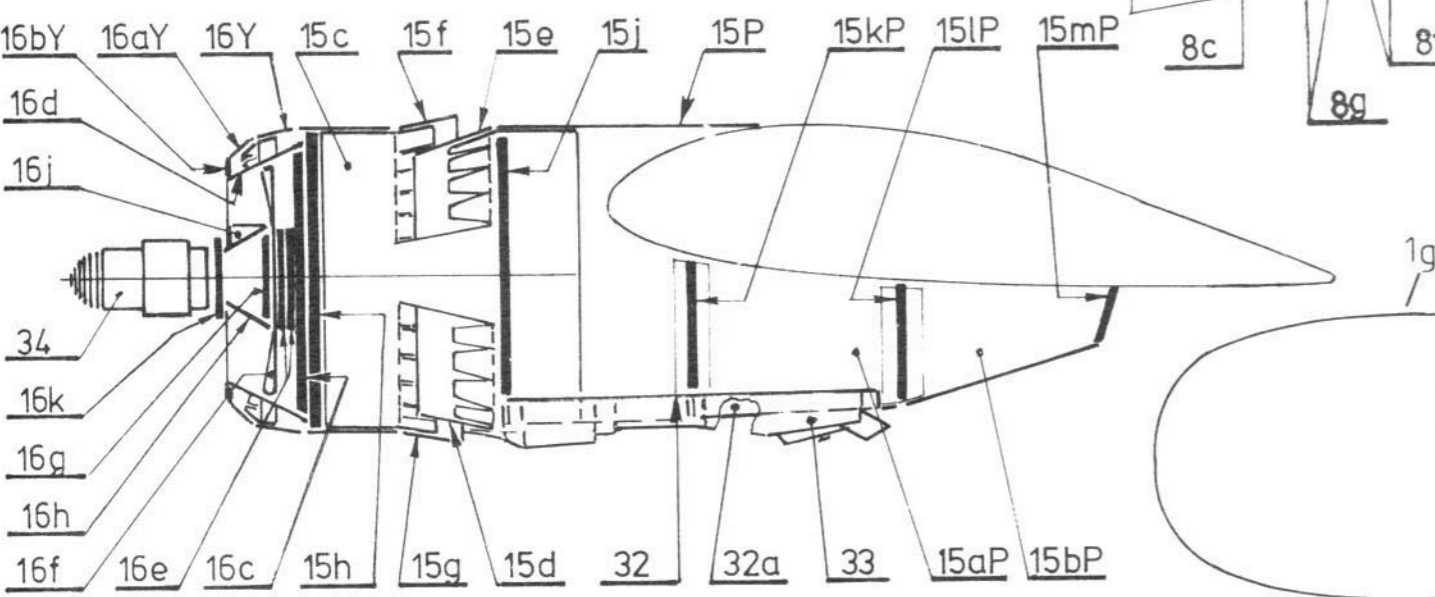
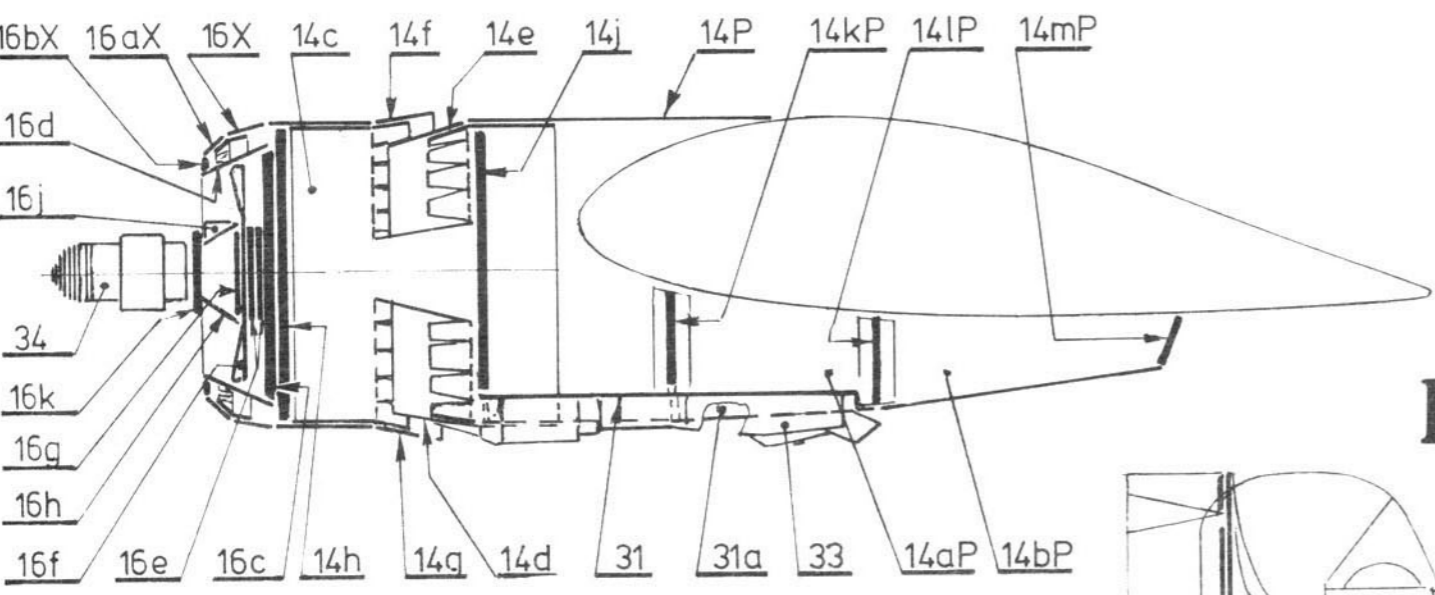


16



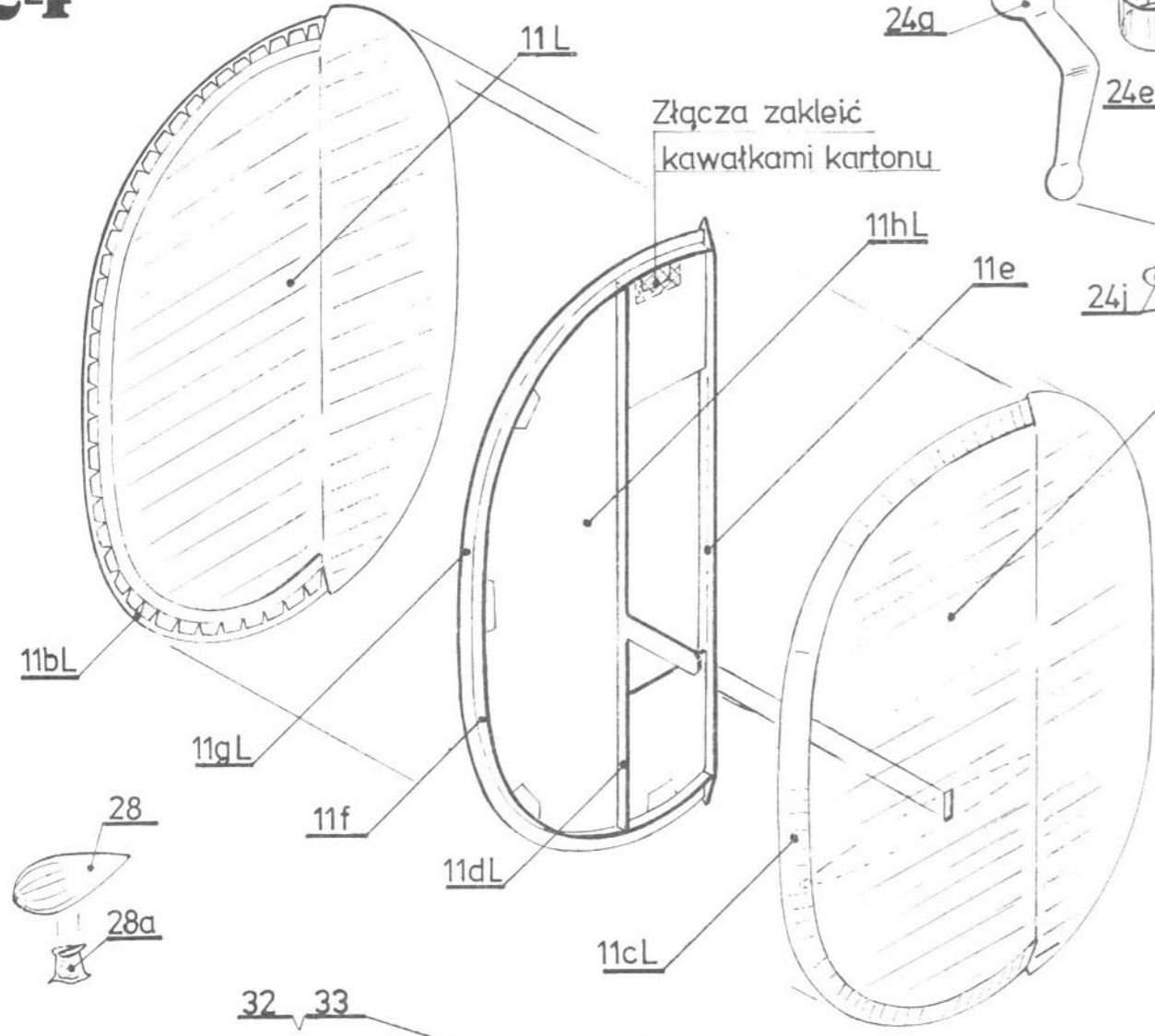
Przeciąć i odgiąć

Punkty przyklejania bomb



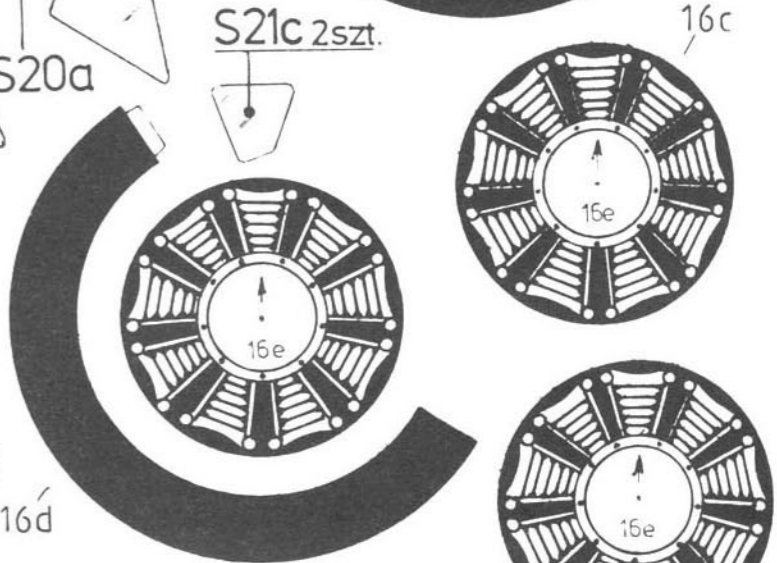
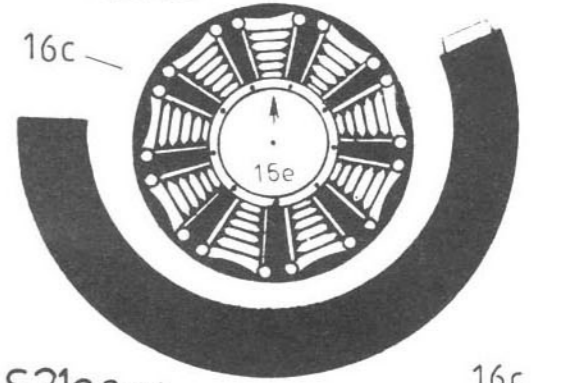
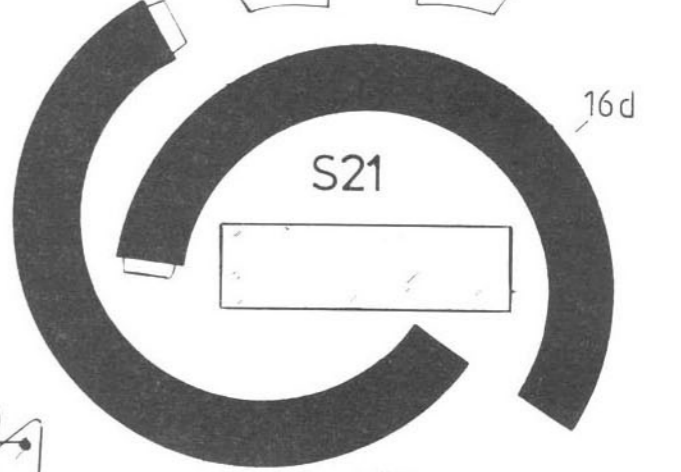
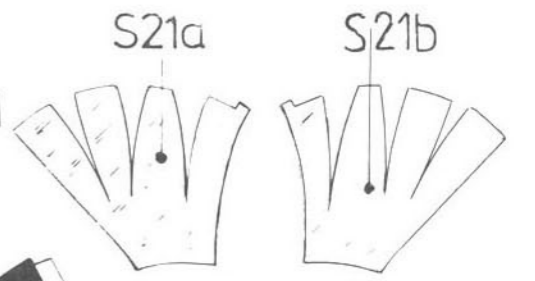
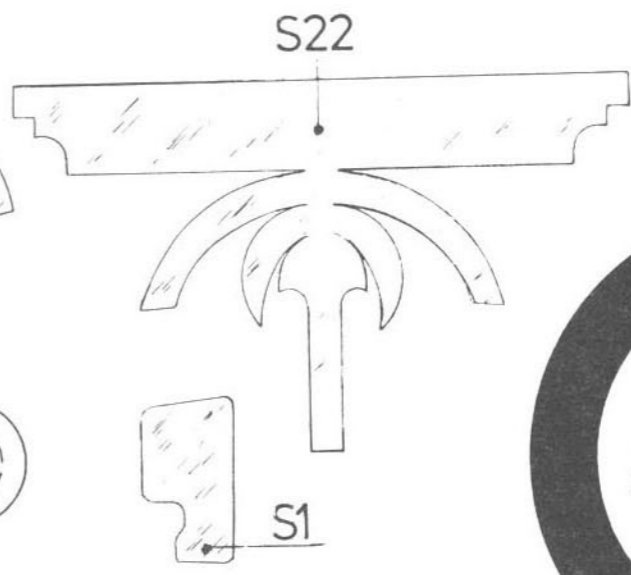
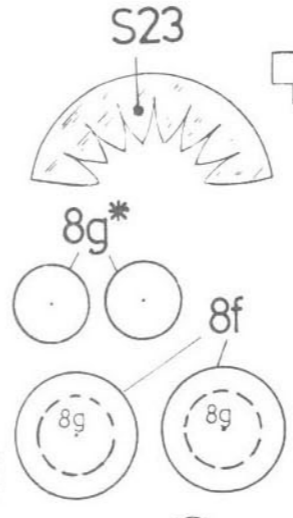
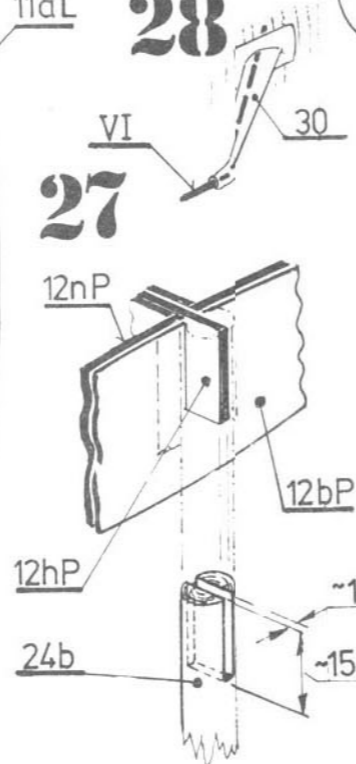
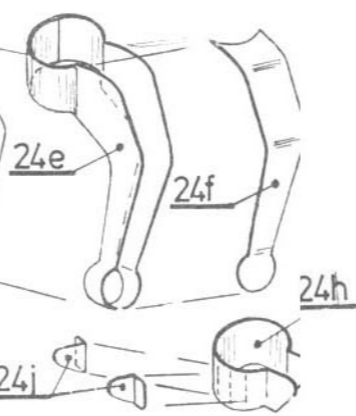
24

29



28

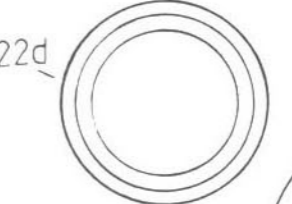
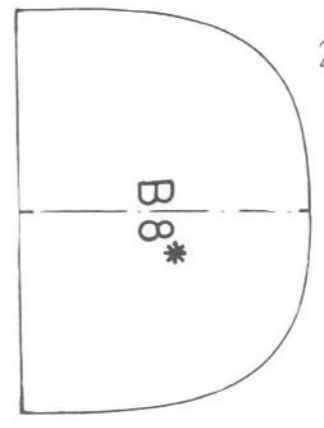
27



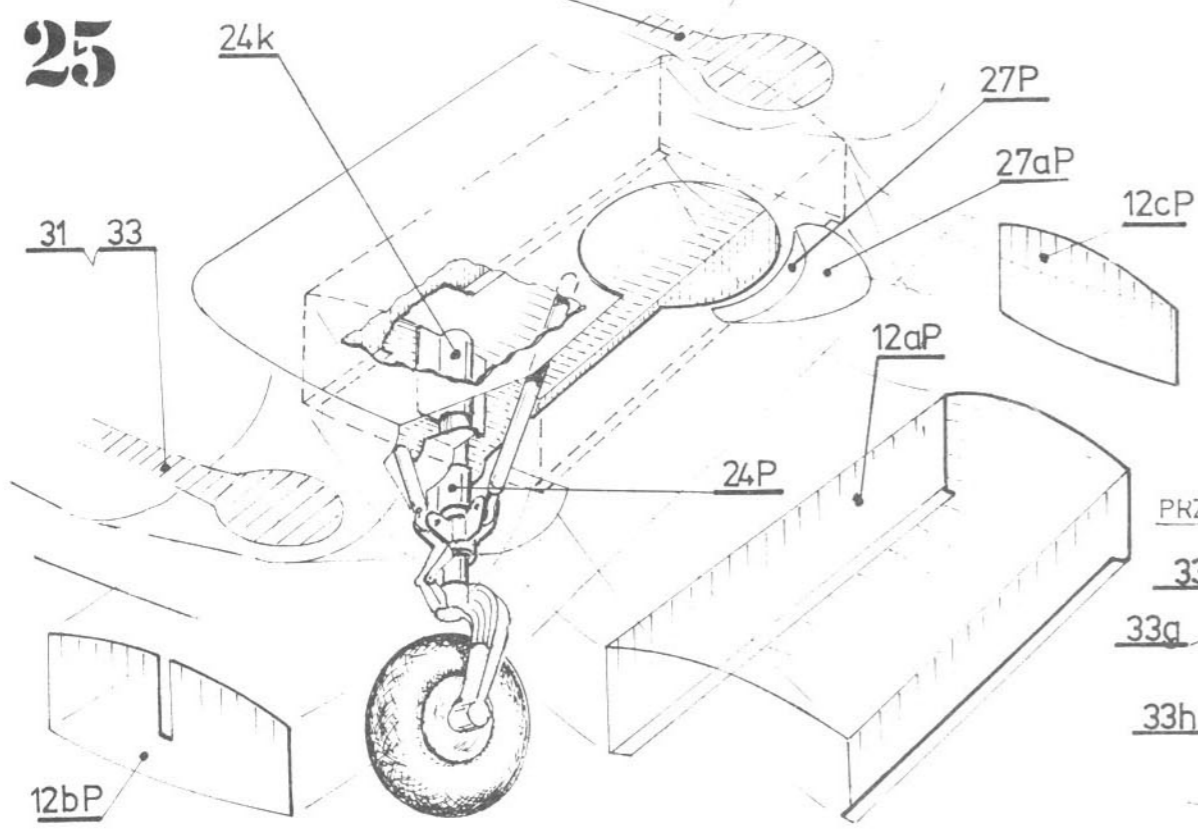
S36 10szt.

S21d 2szt.

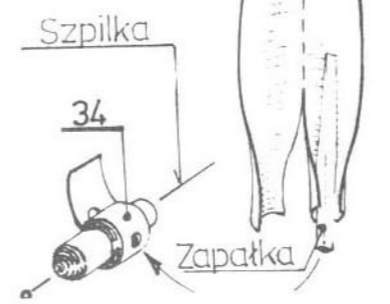
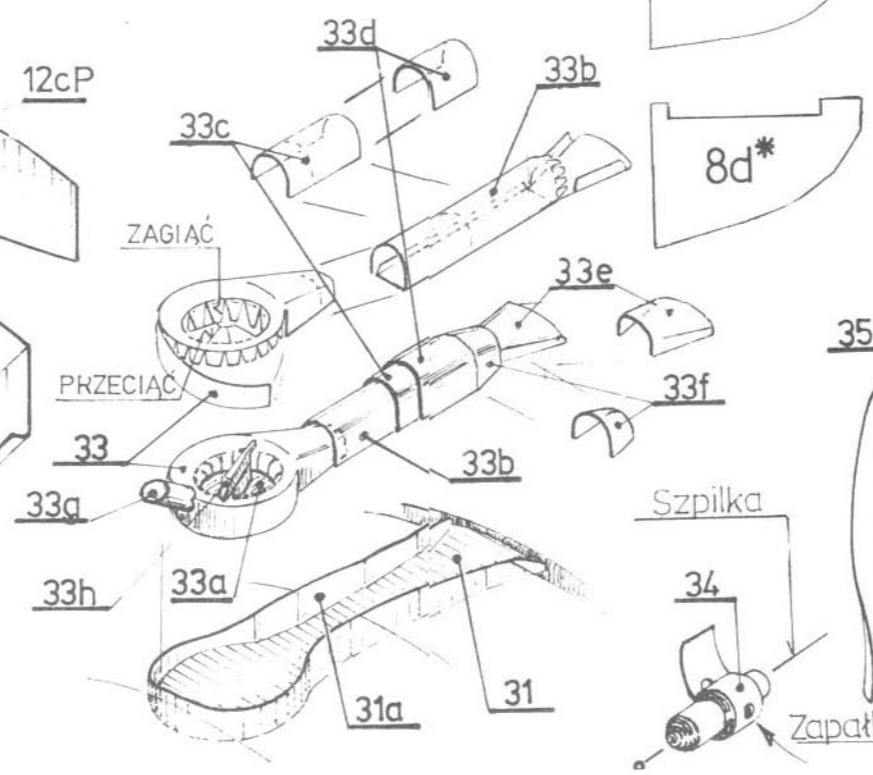
30

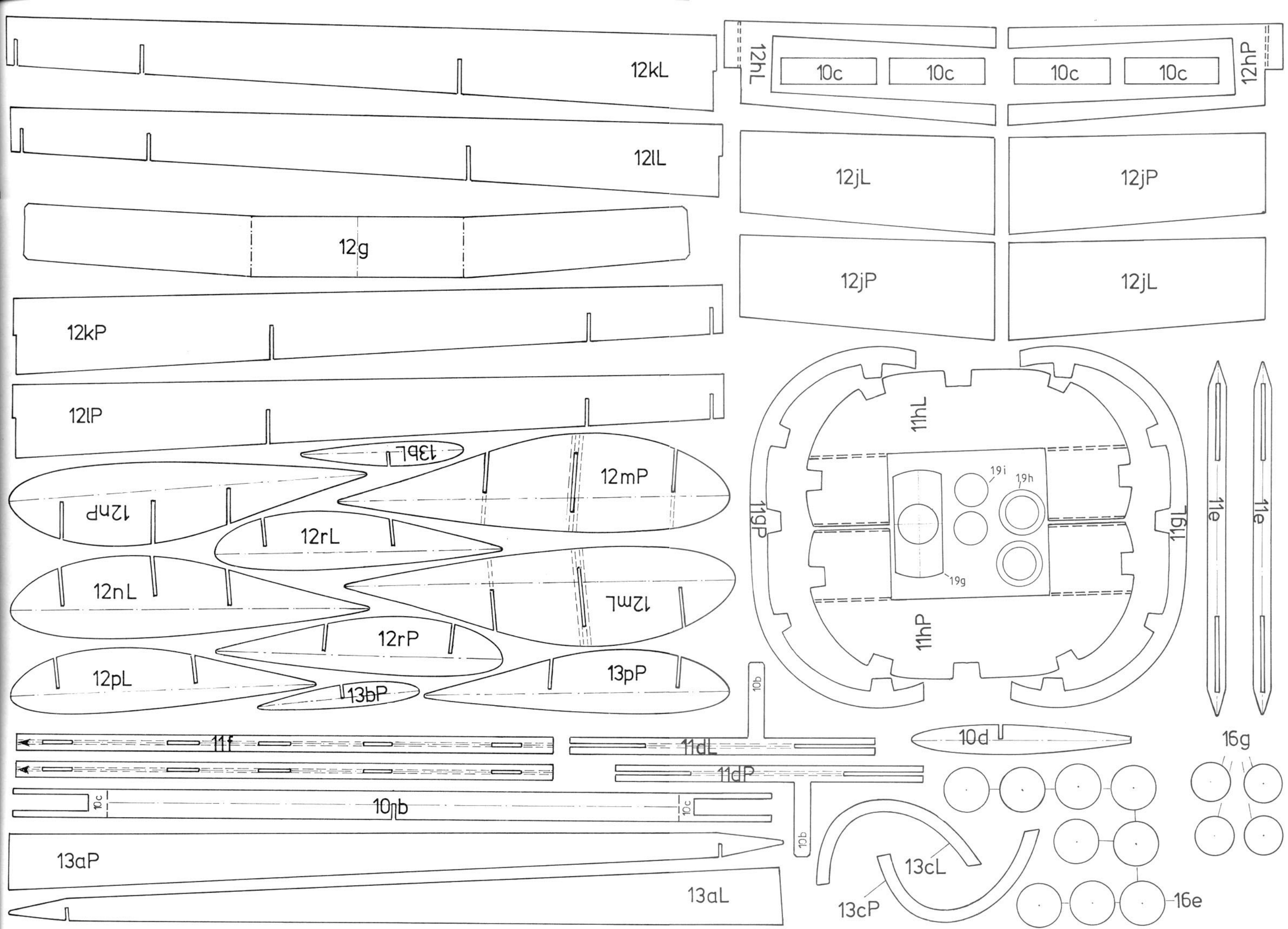


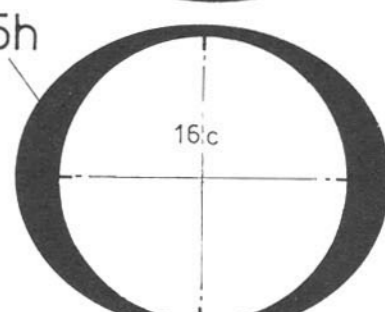
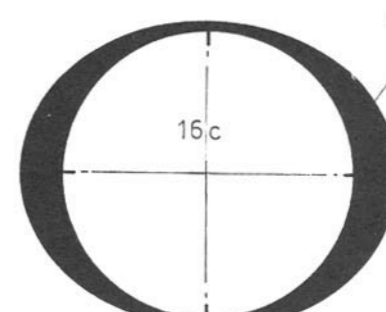
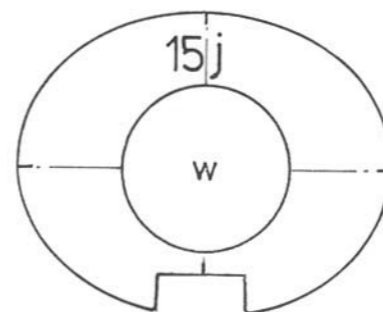
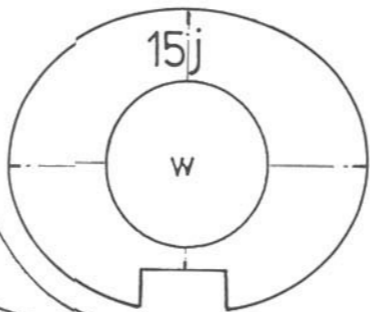
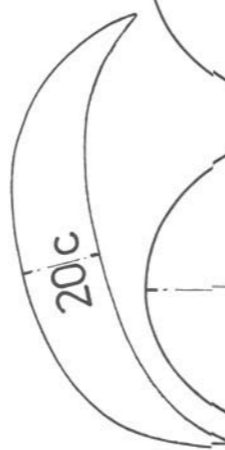
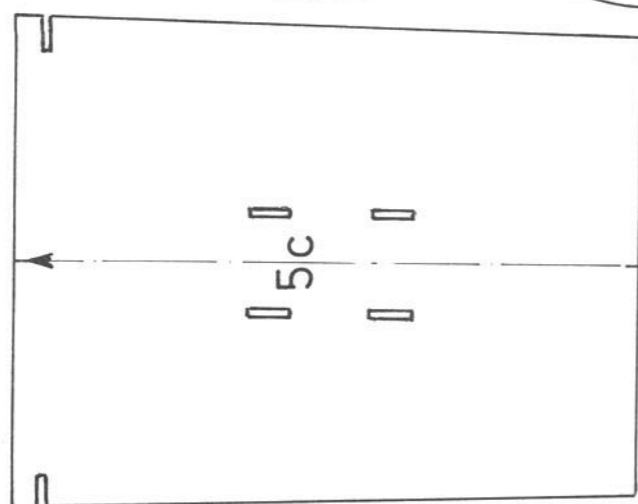
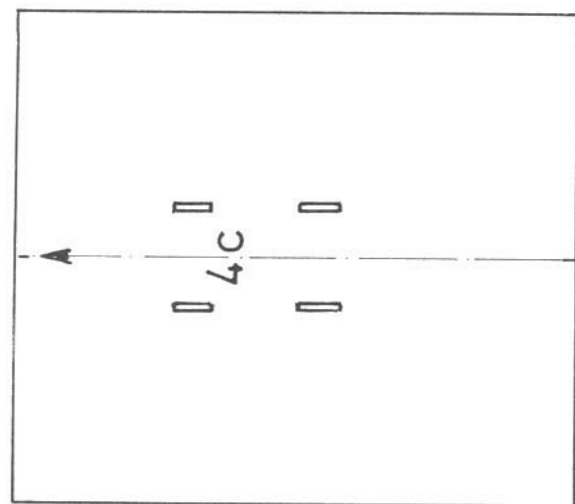
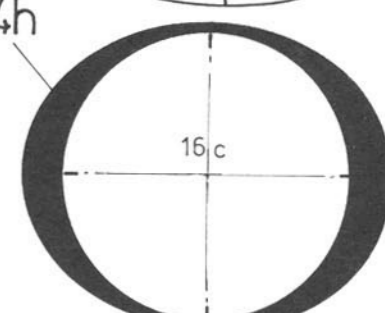
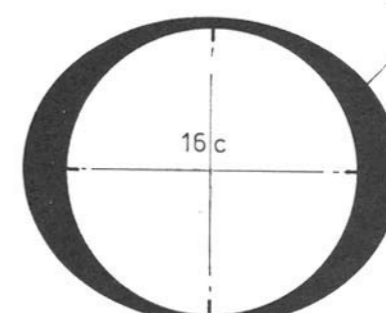
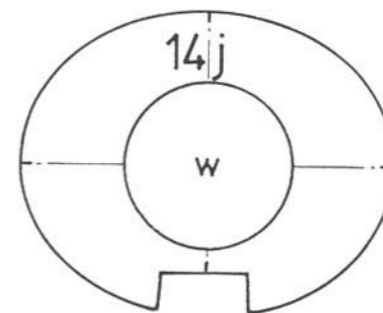
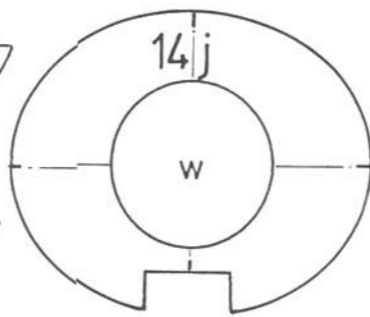
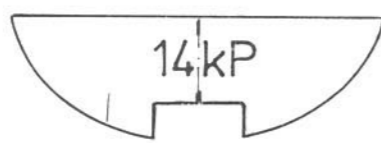
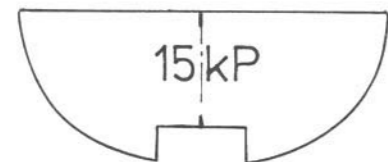
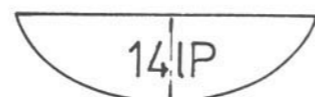
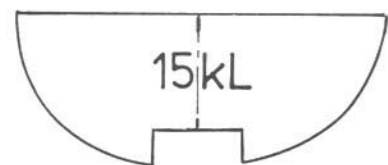
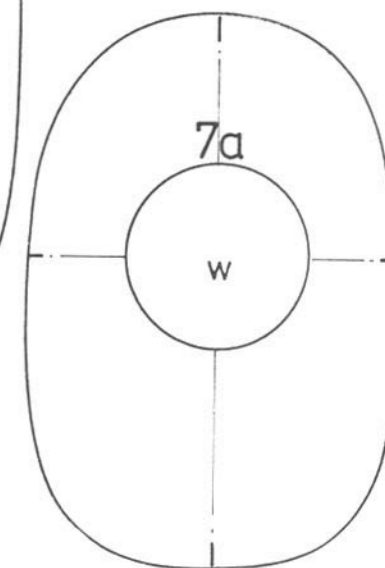
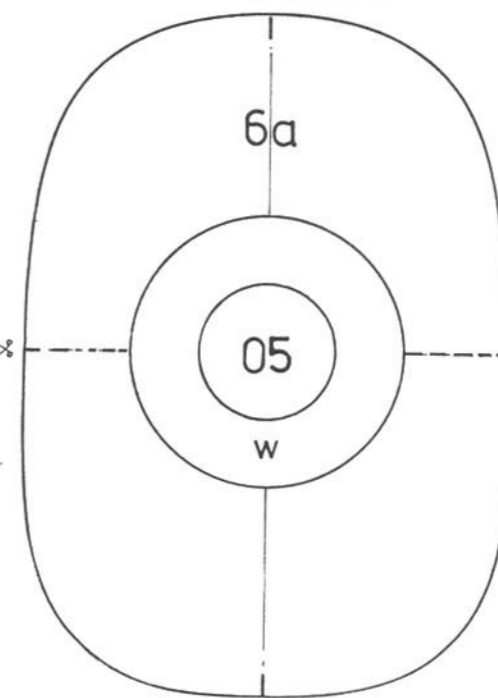
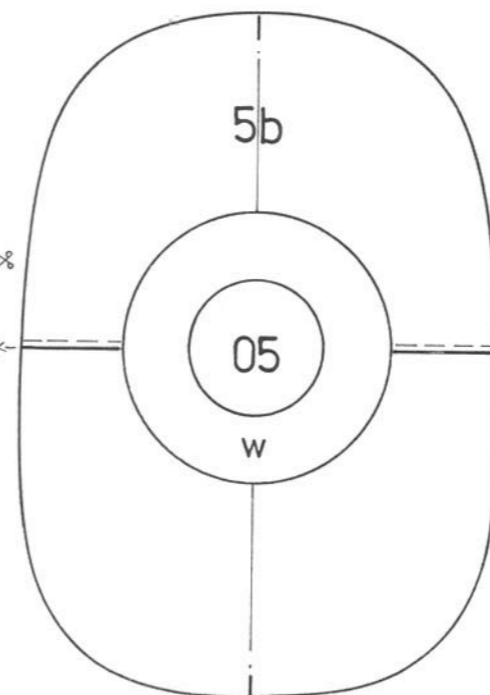
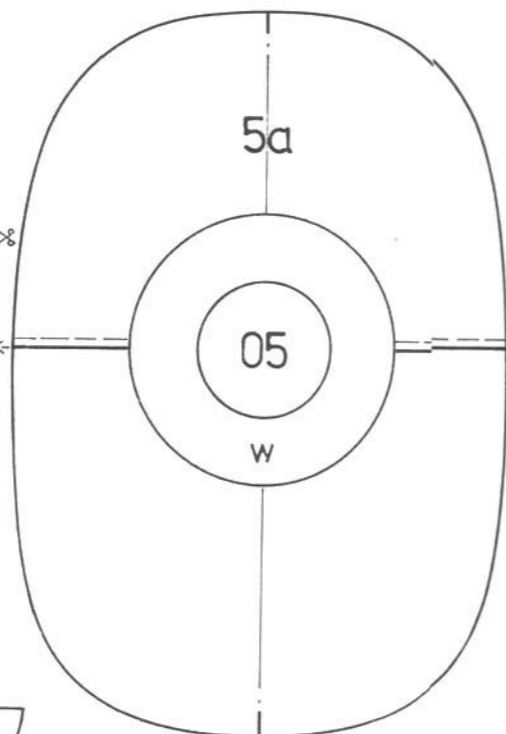
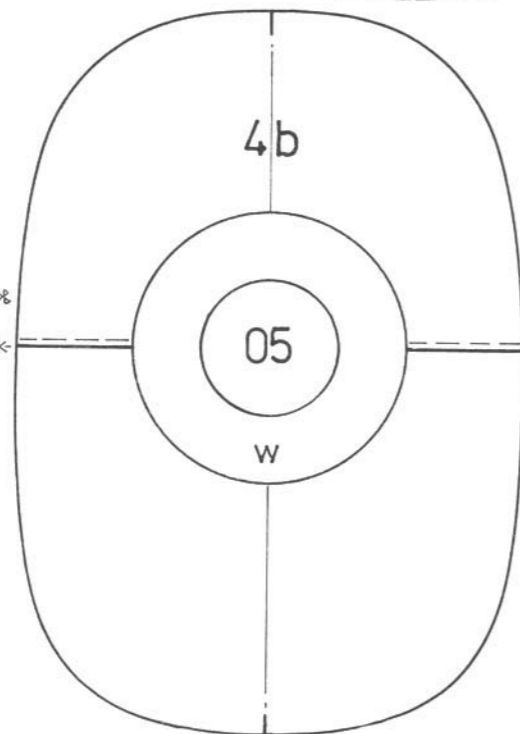
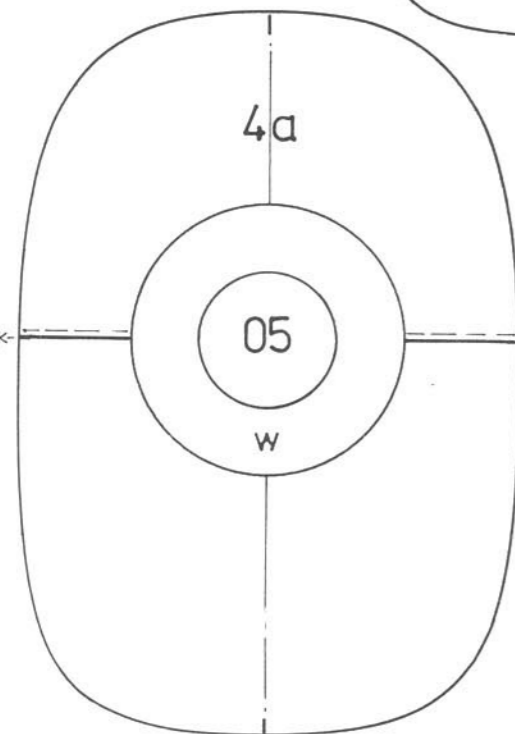
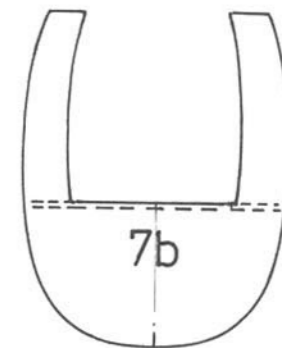
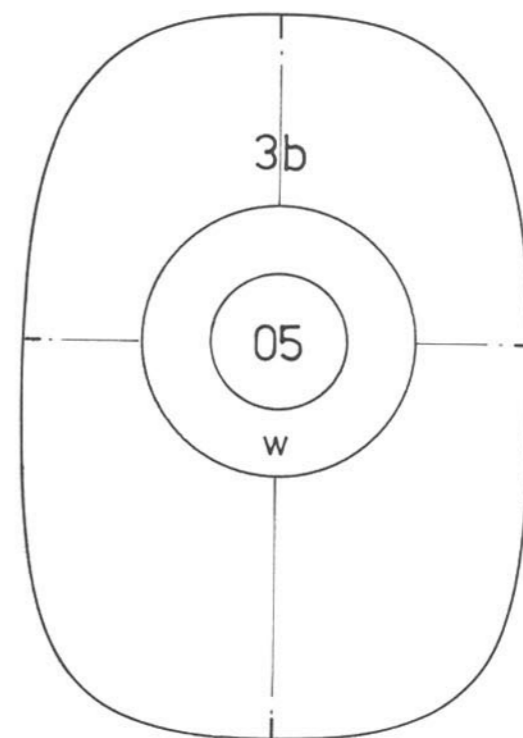
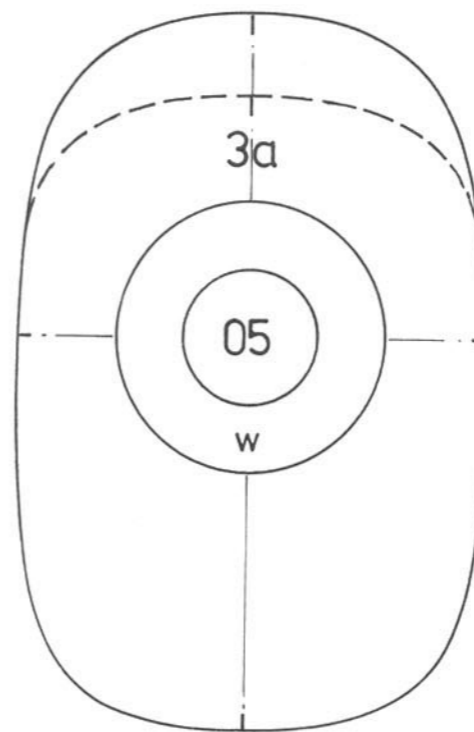
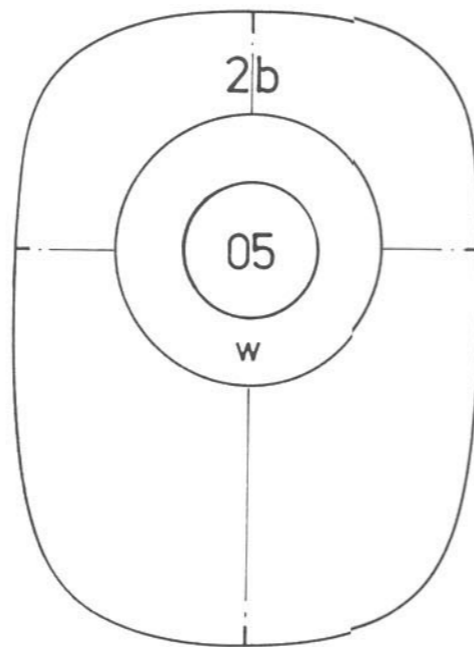
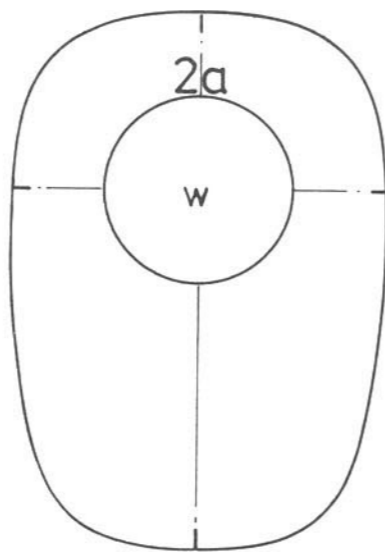
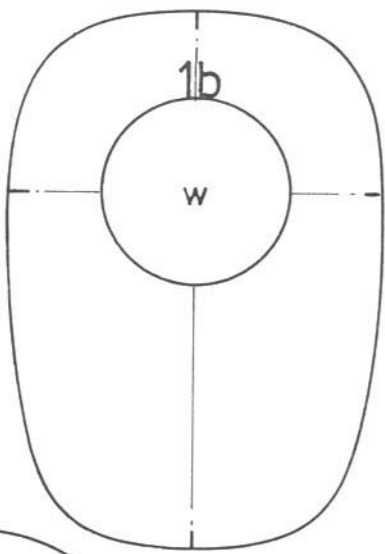
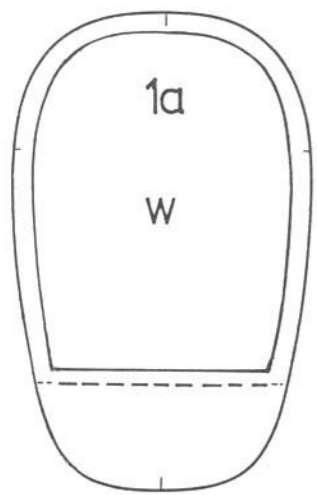
25



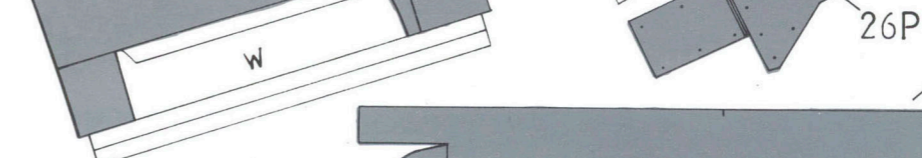
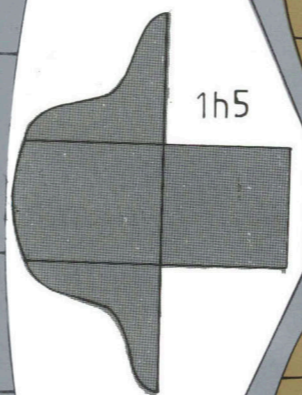
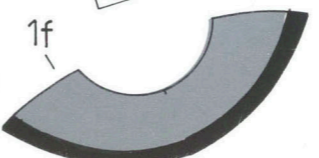
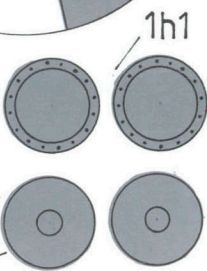
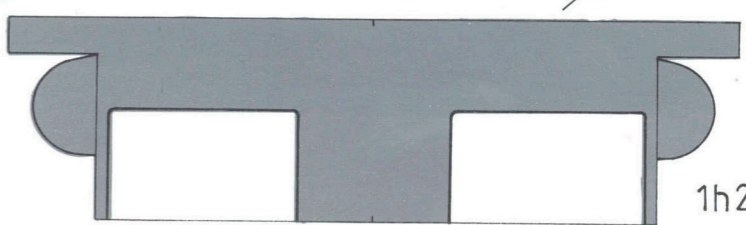
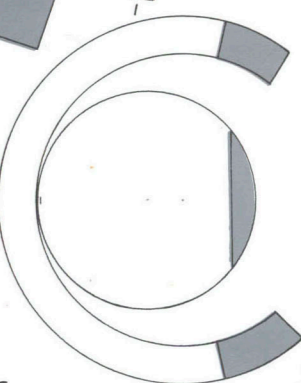
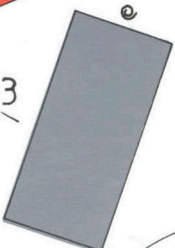
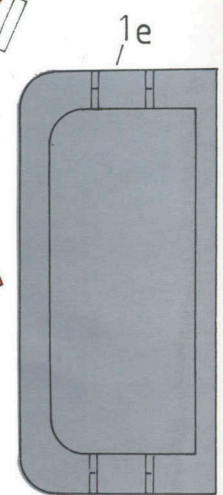
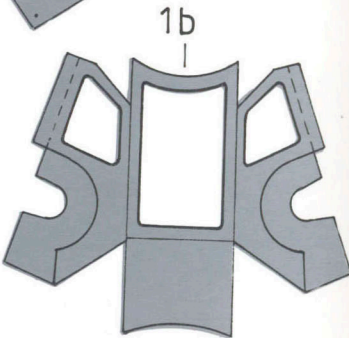
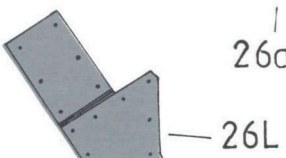
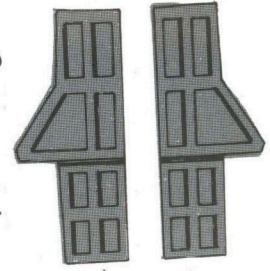
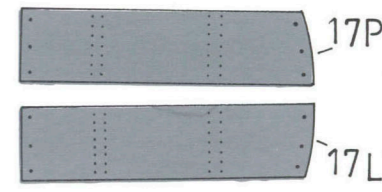
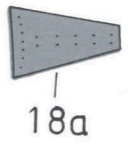
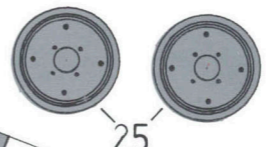
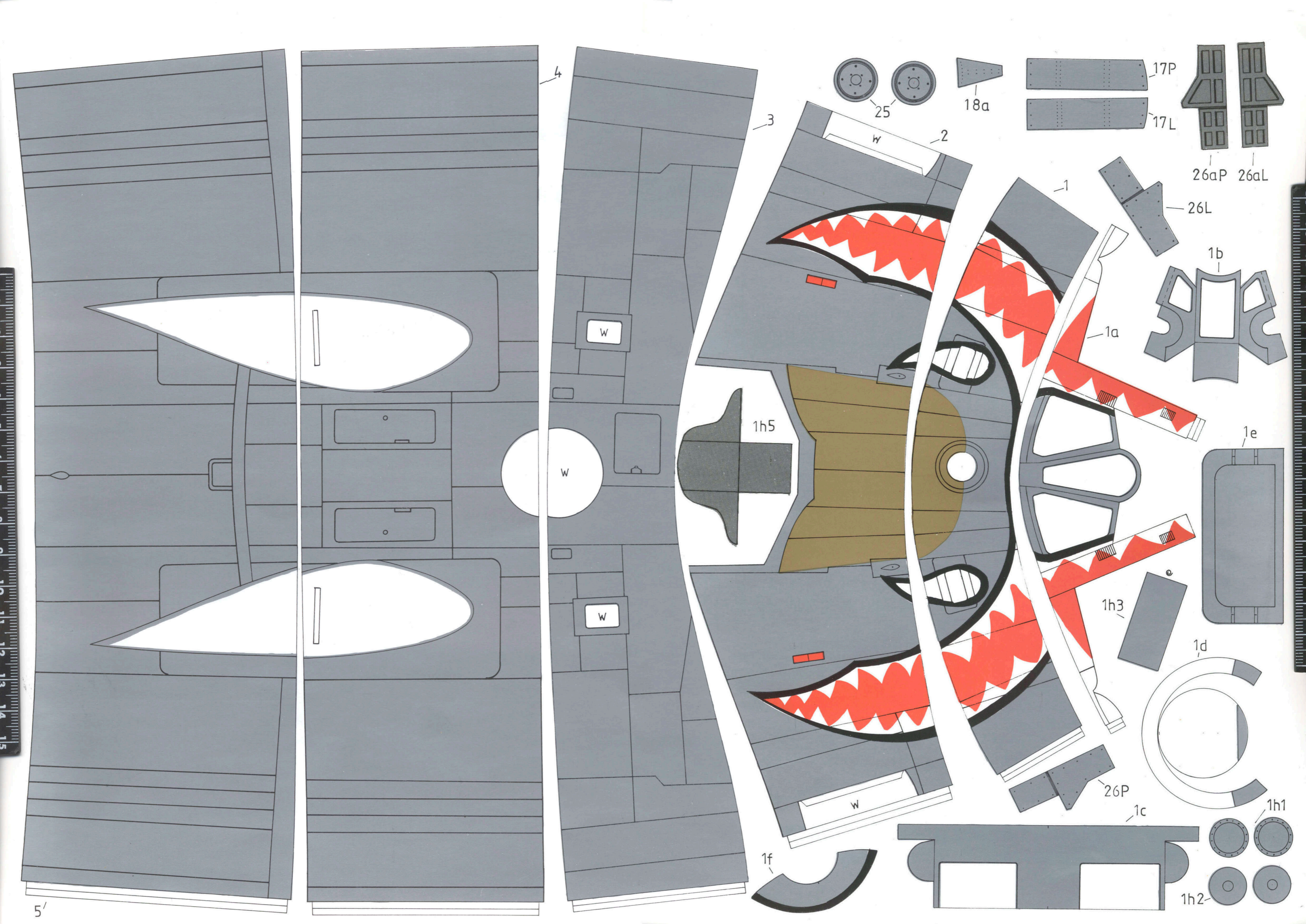
26











4

3

w

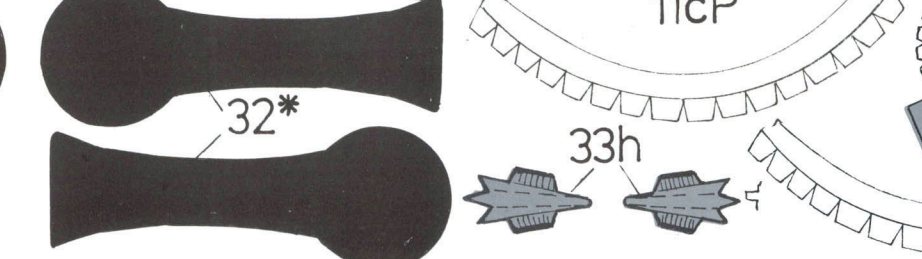
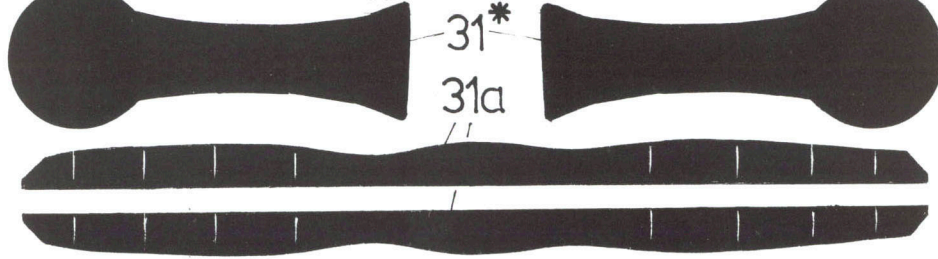
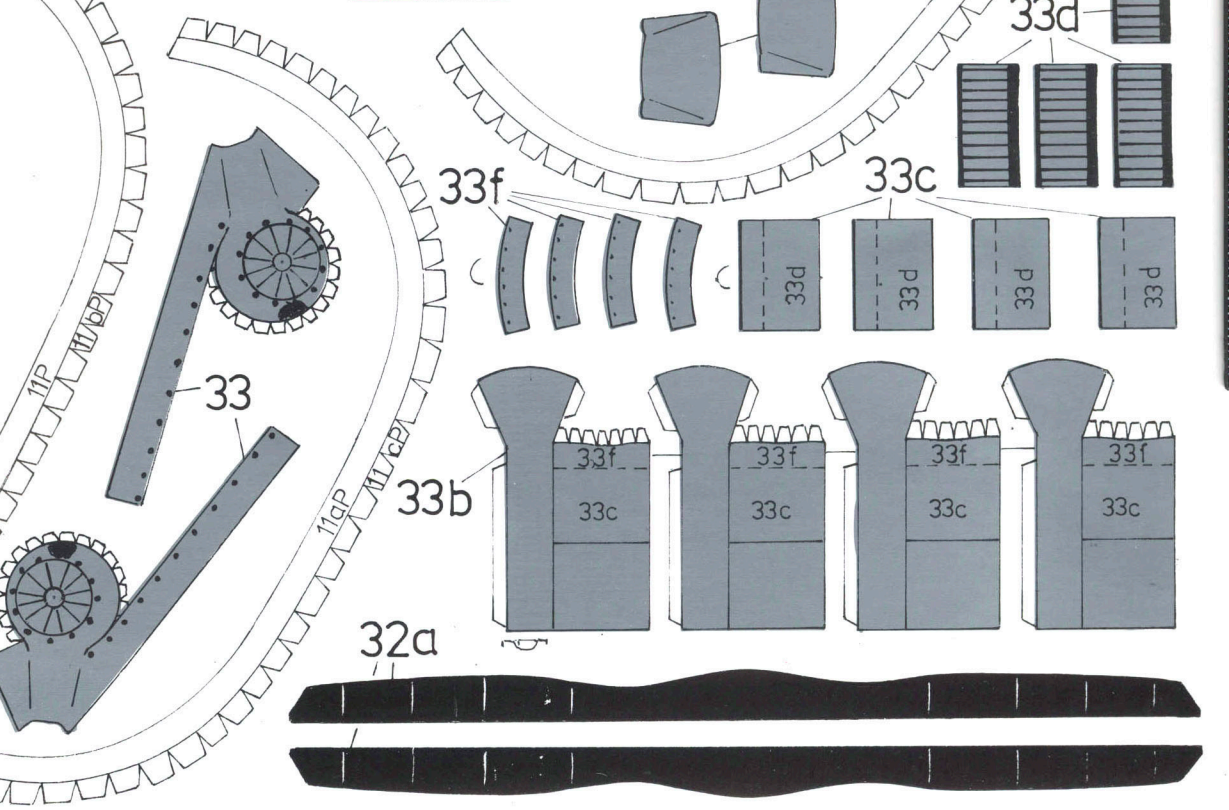
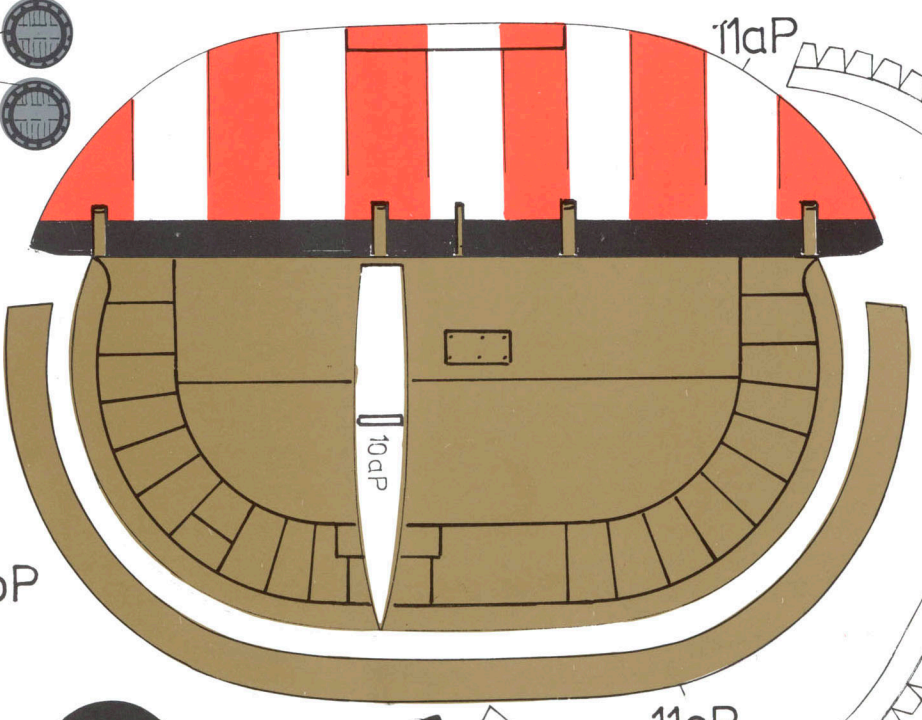
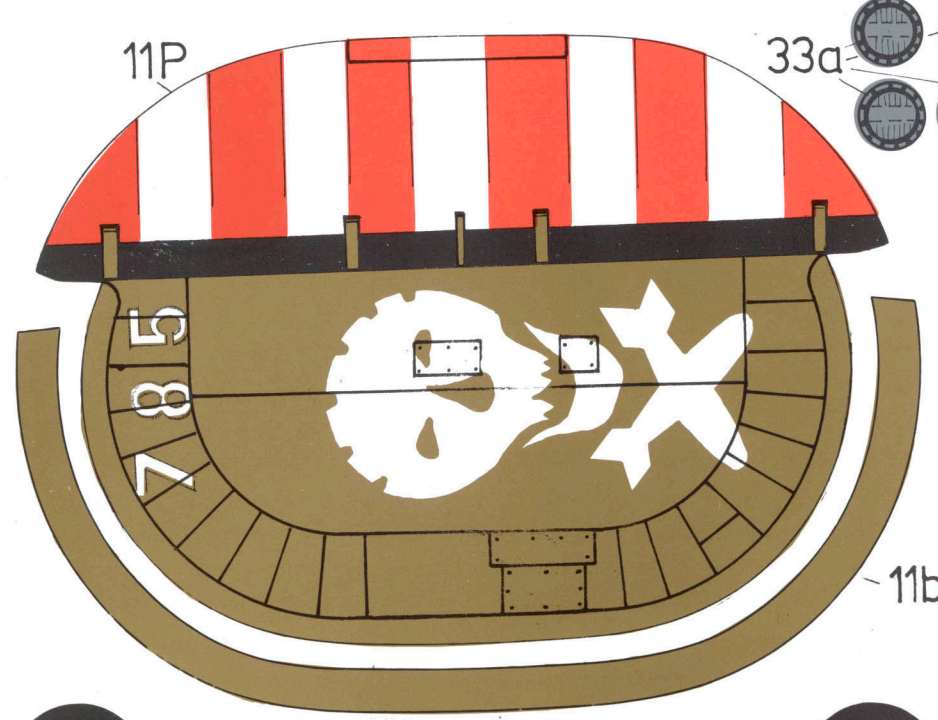
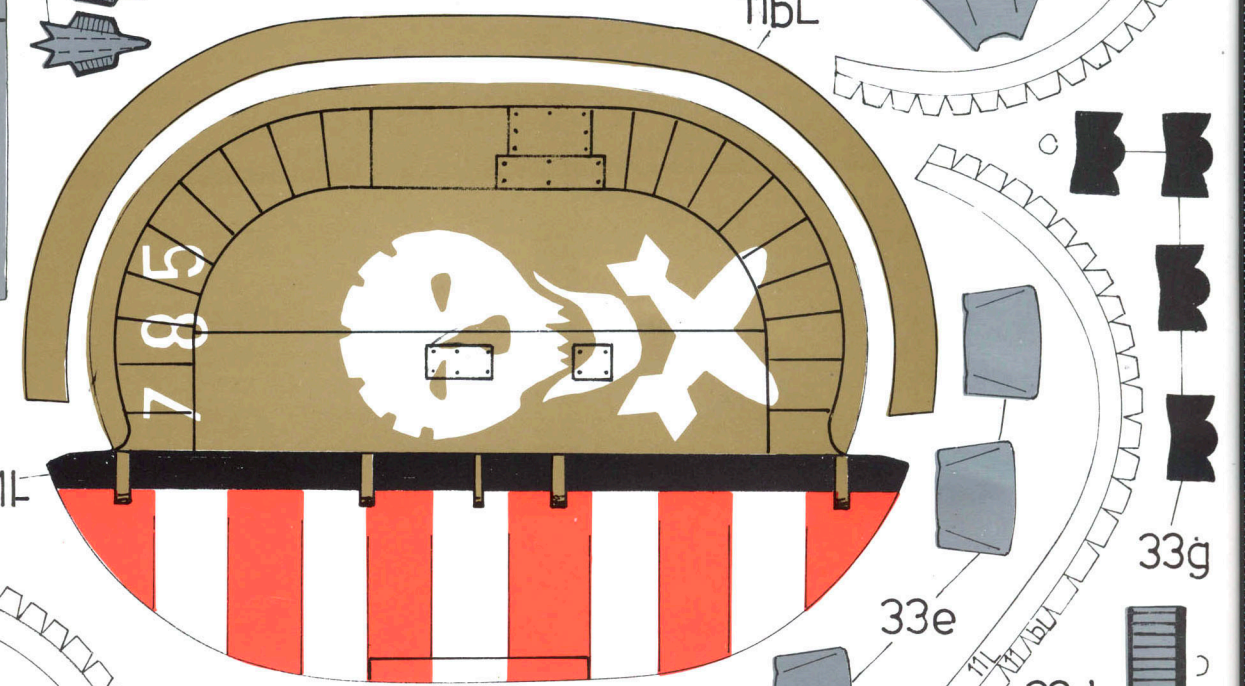
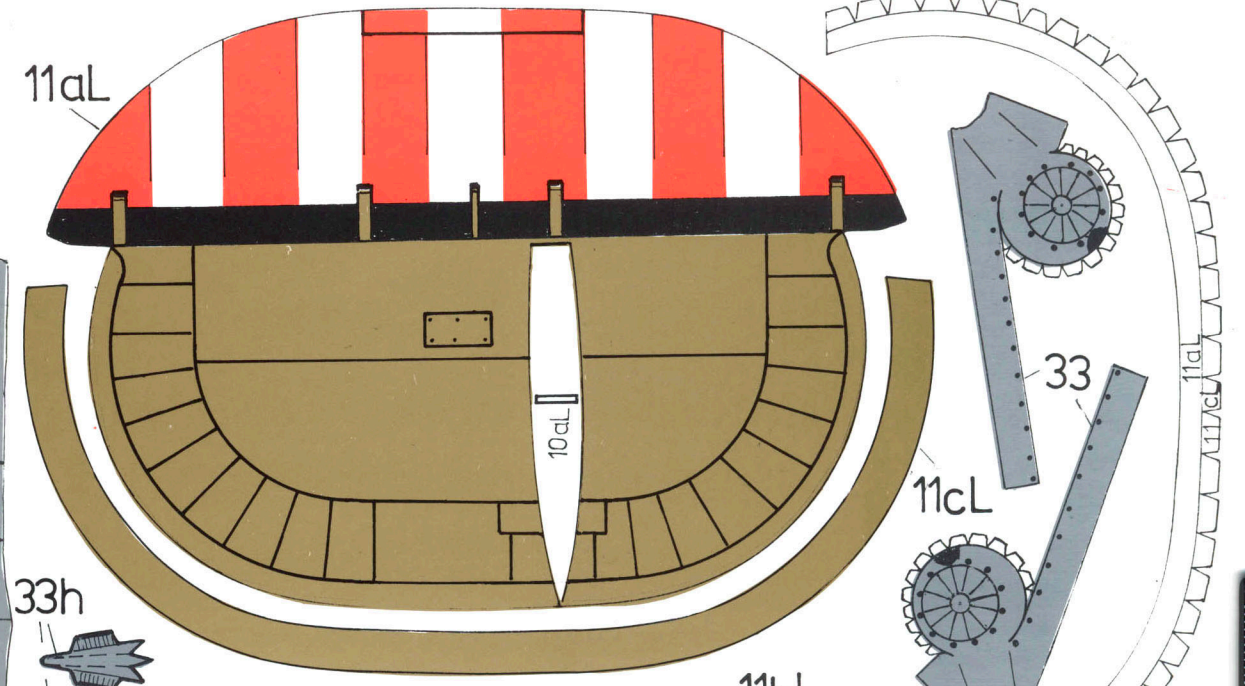
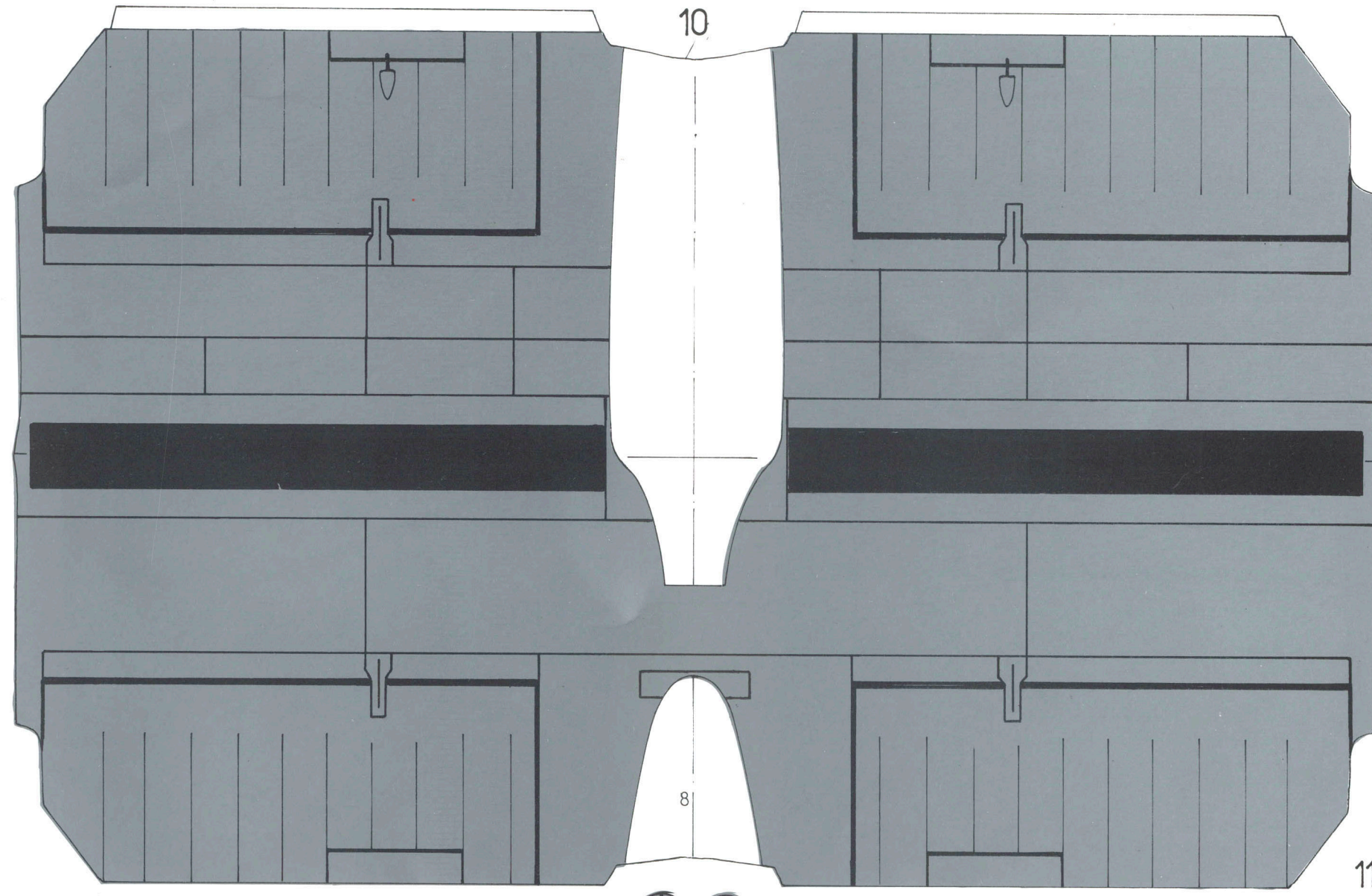
2

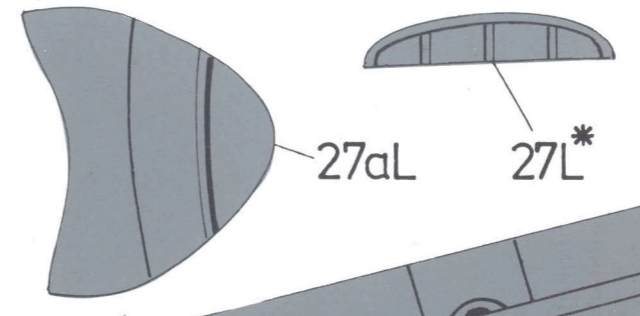
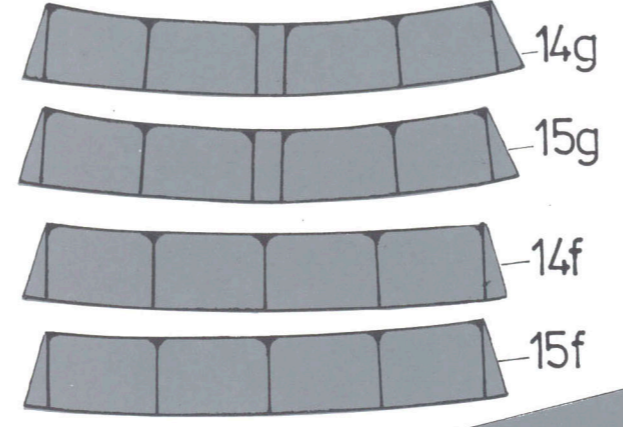
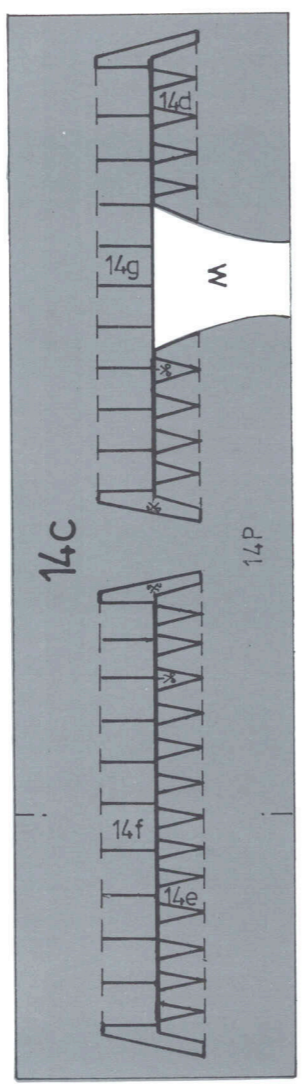
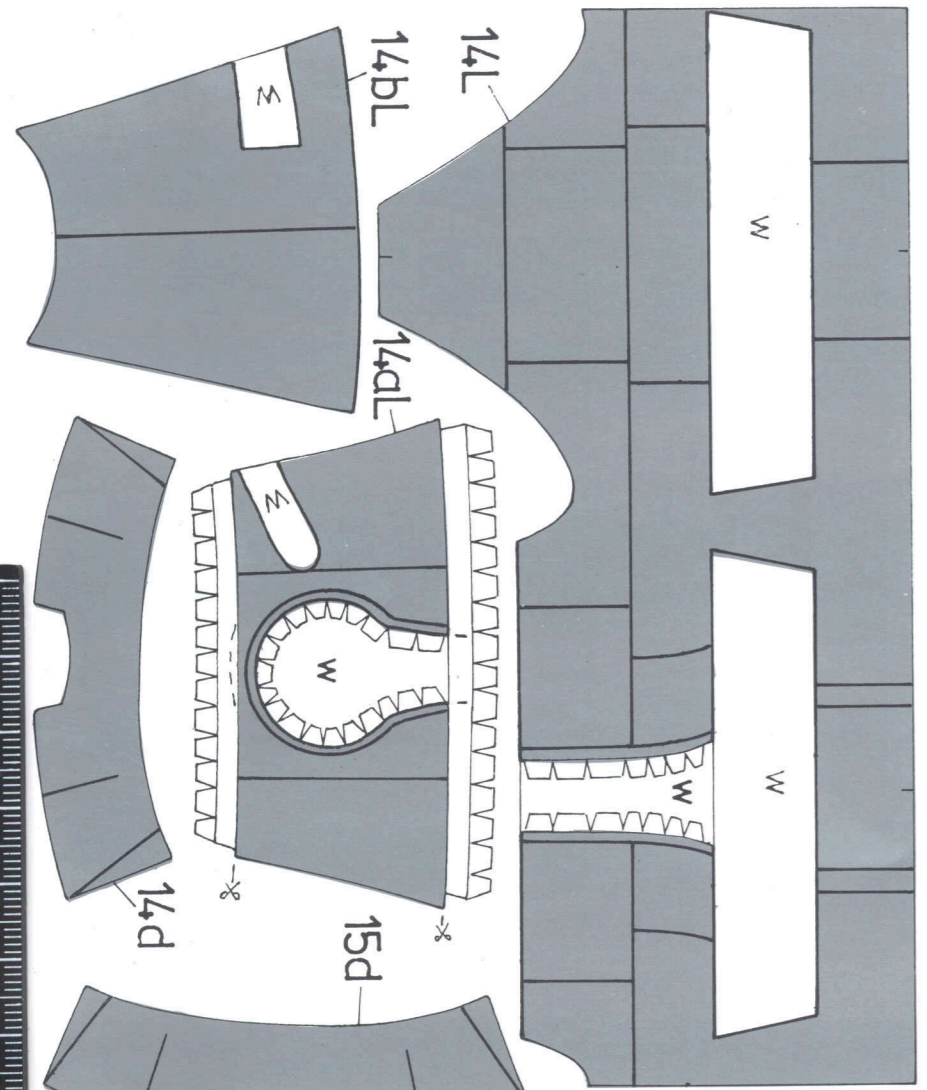
w

w

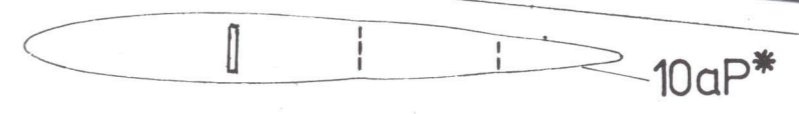
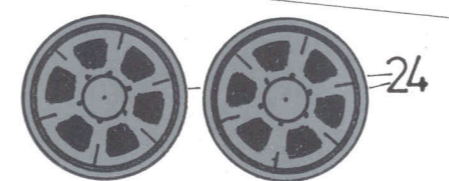
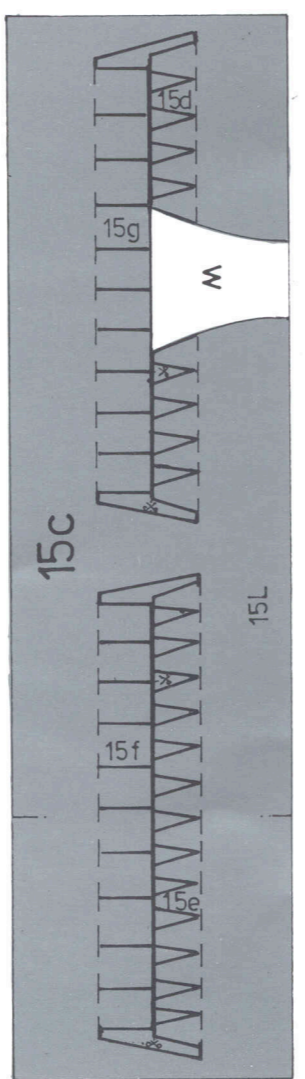
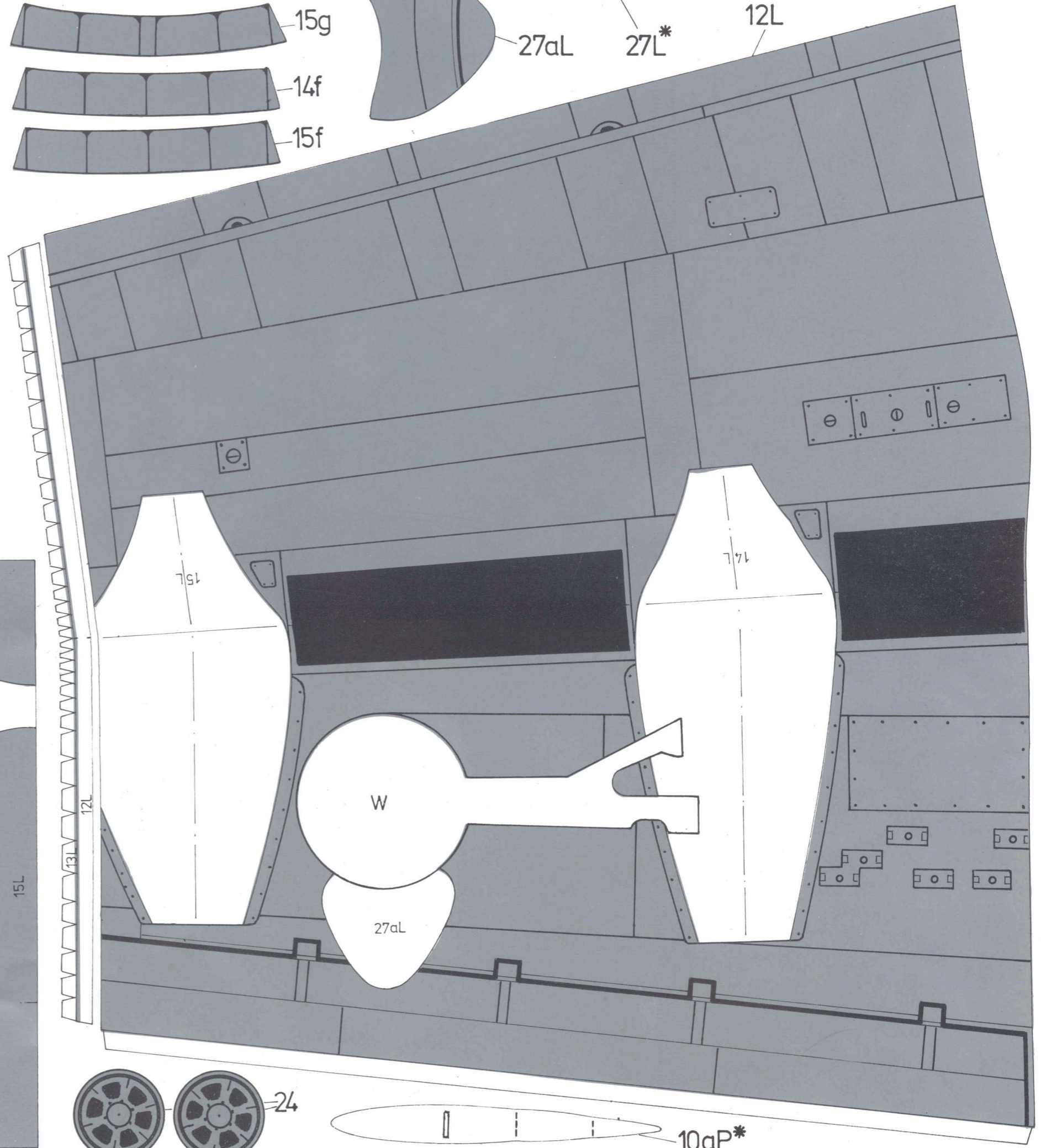
w

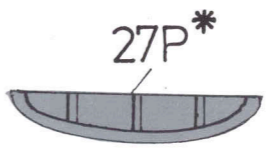
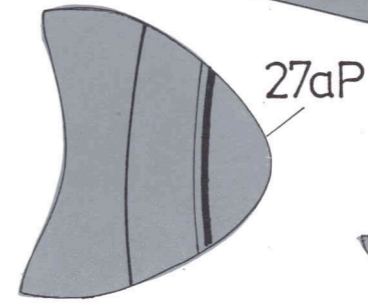
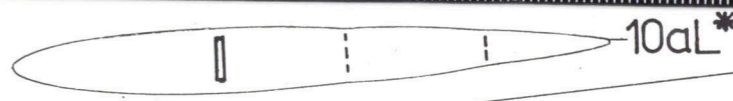
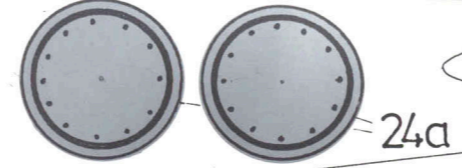
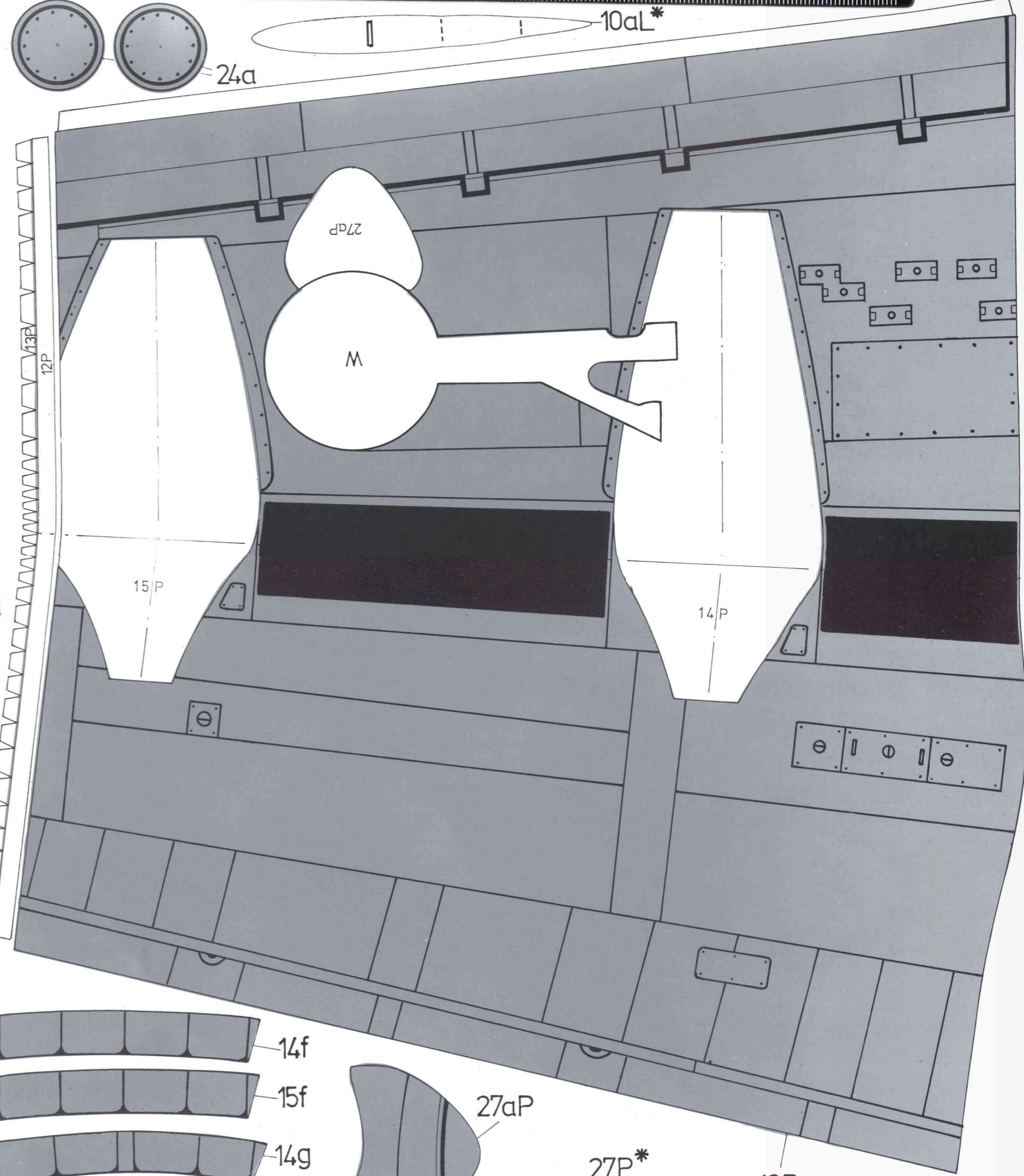
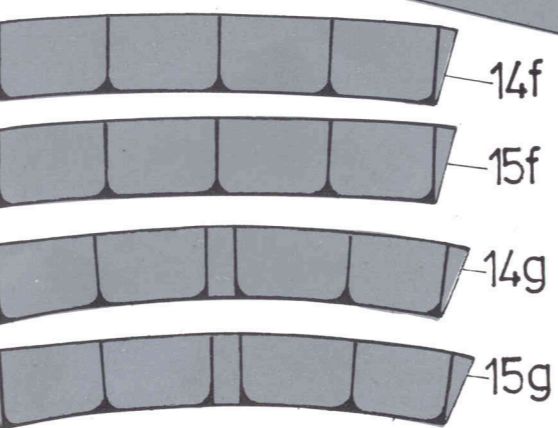
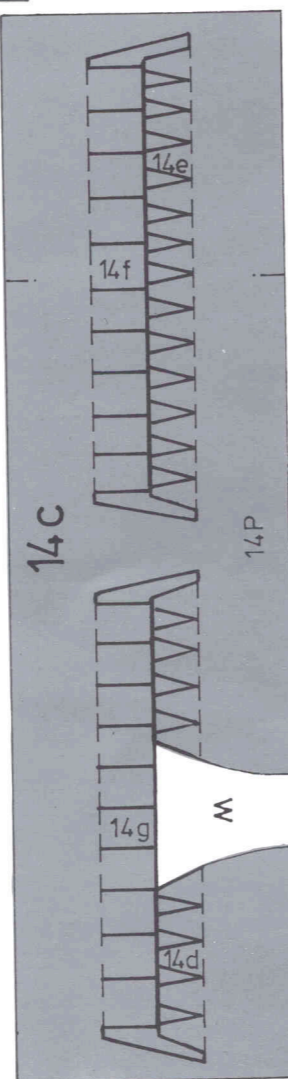
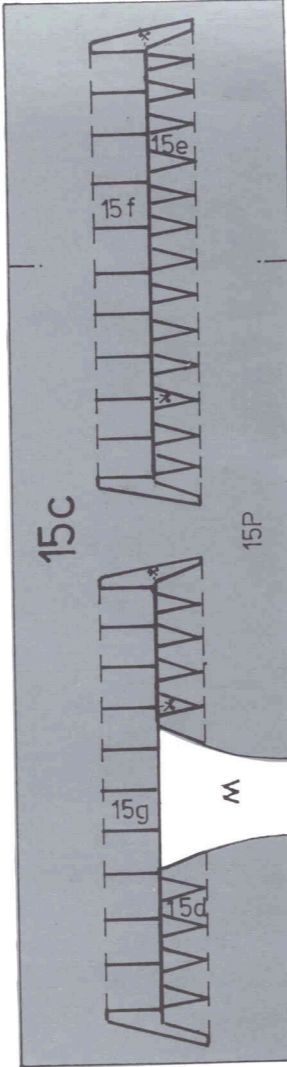
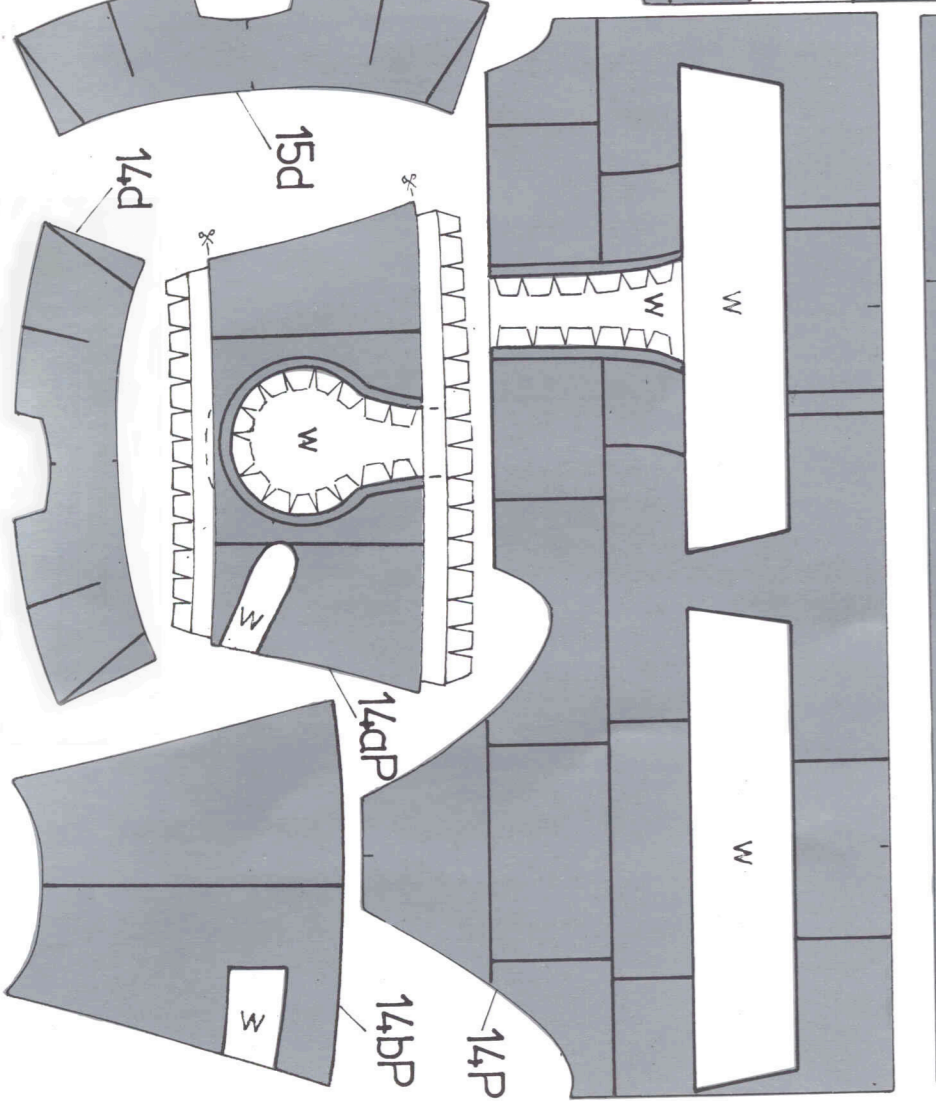
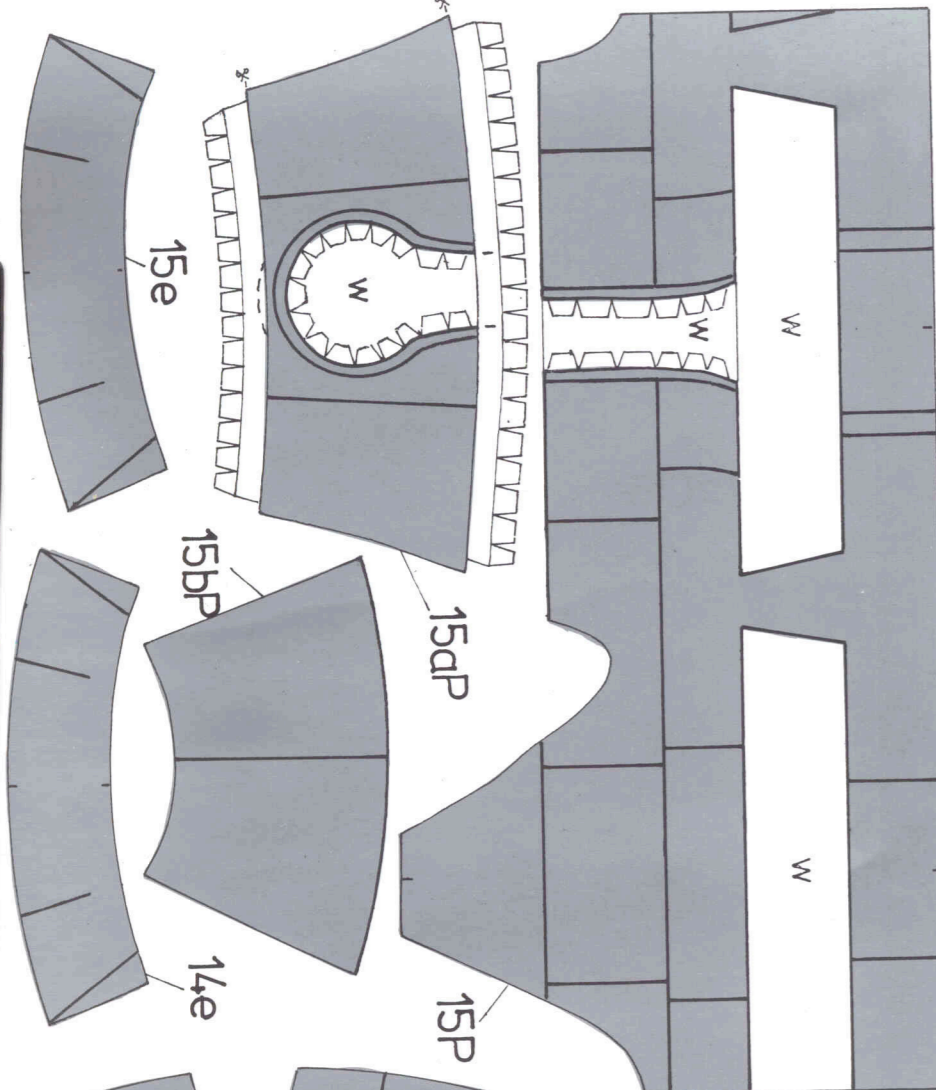
w



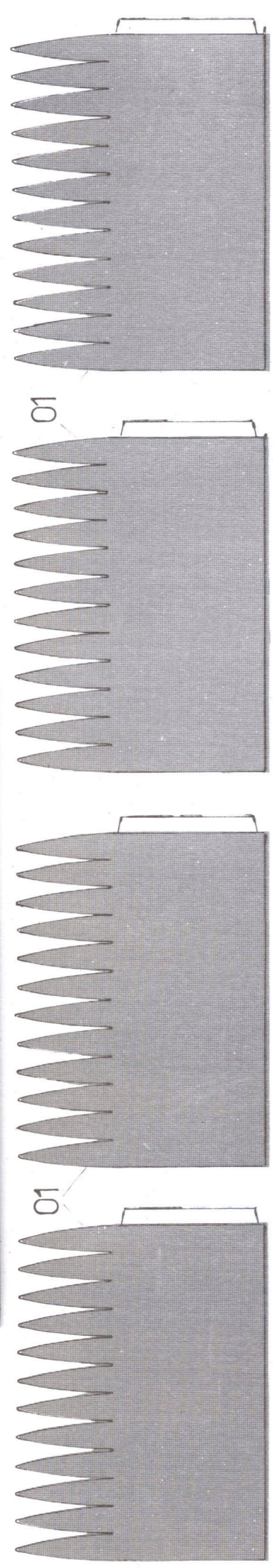
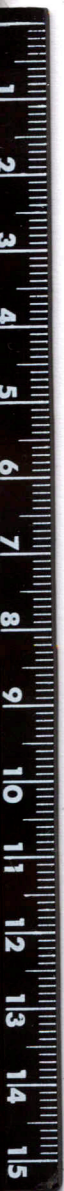


12L

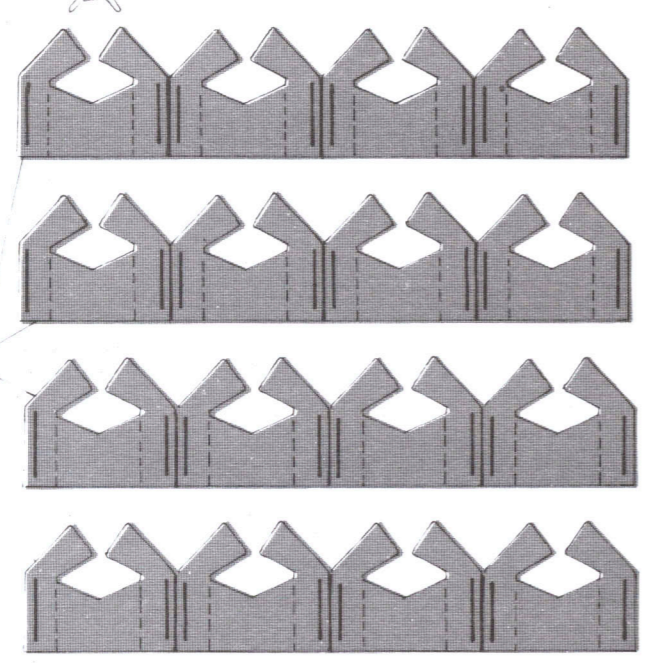




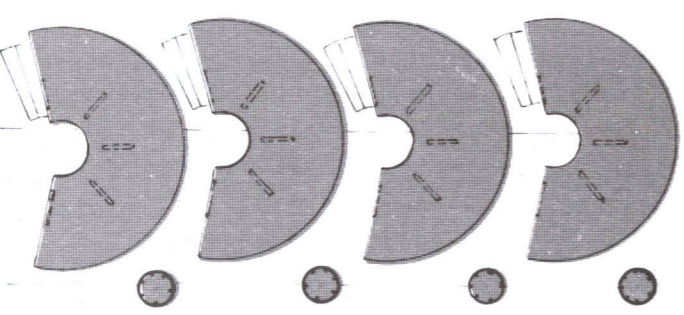
12P



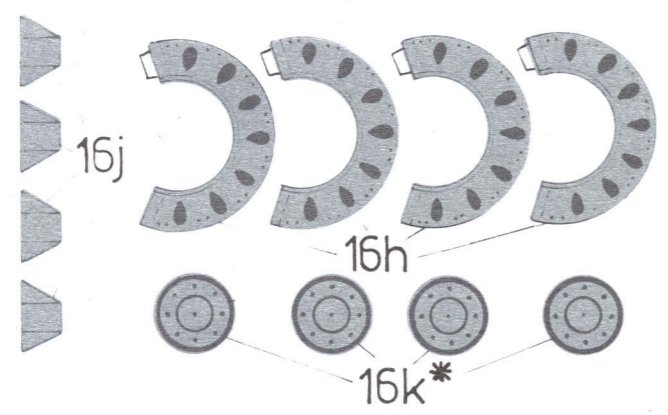
04



02



03



16j

16h

16k\*

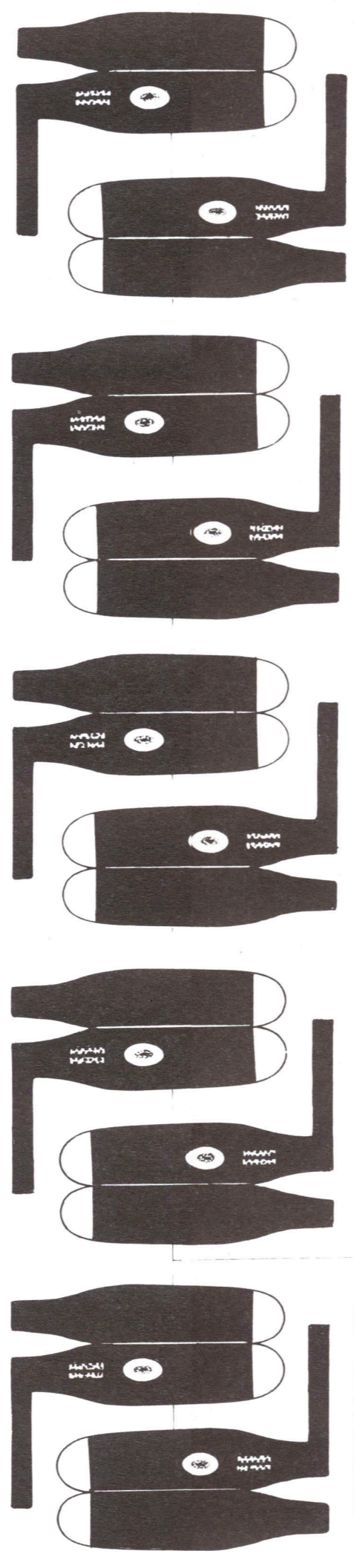
16g

16g

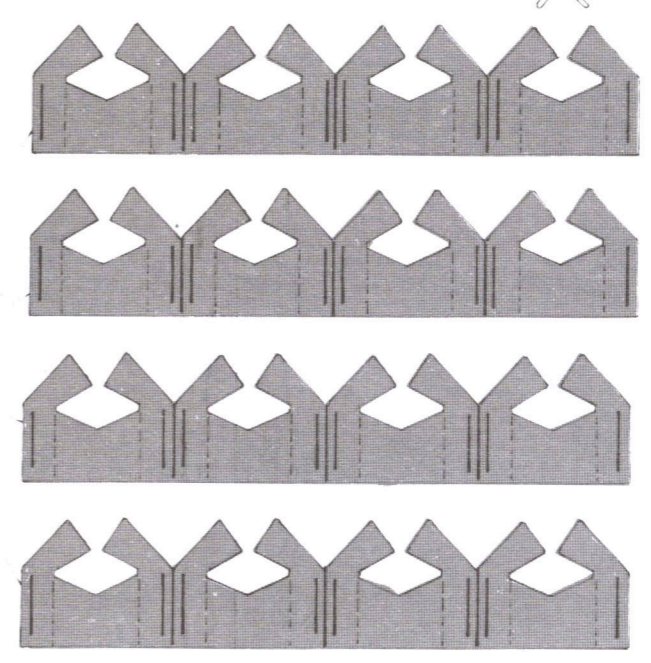
16f

16g

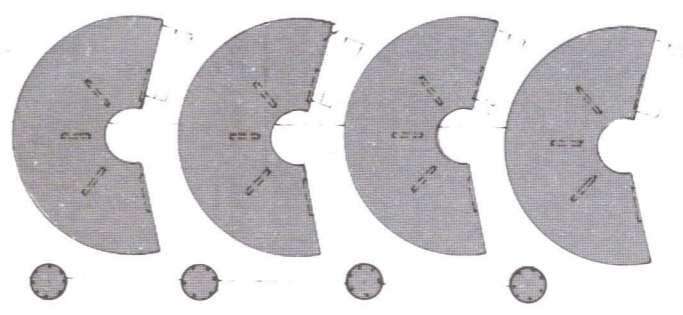
16g



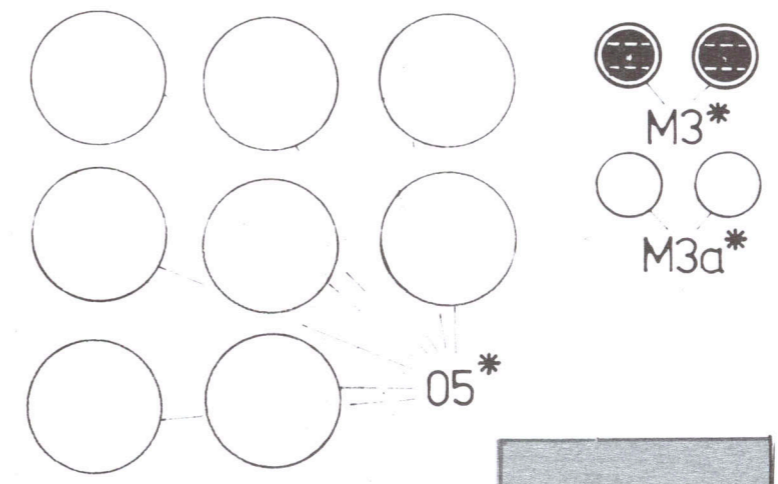
04



02



03

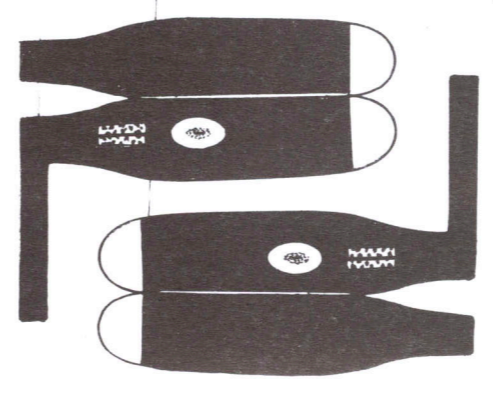


05\*

M3\*

M3a\*

35



01

