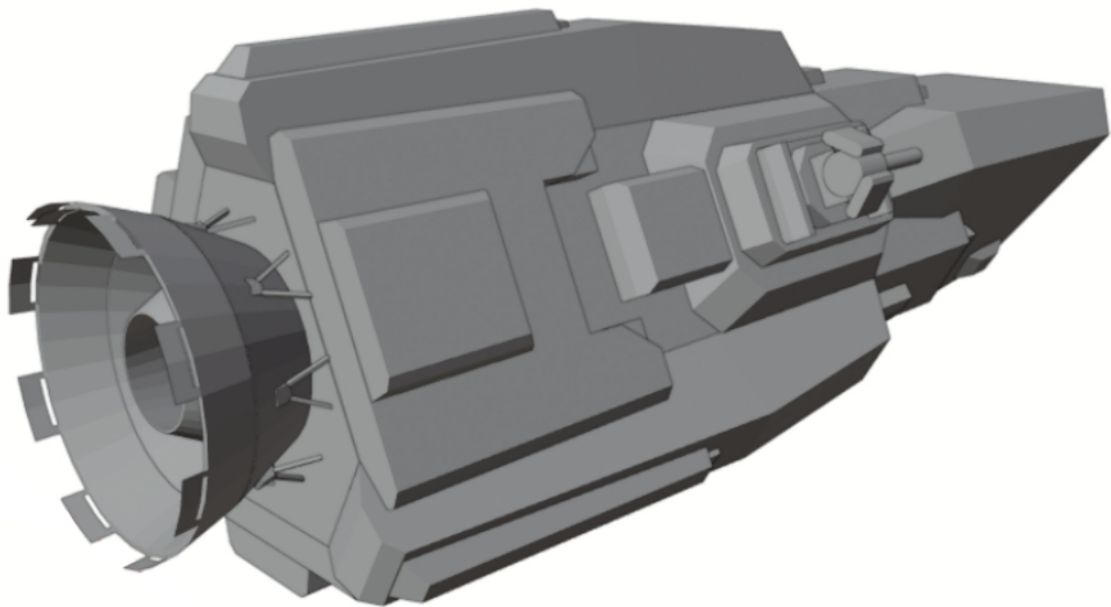


1:100 SCALE

# MORRIGAN CLASS

MCRN FAST PATROL DESTROYER



## **General Information**

The MCRN Morrigan is a class of vessel that appears in the TV / Streaming series 'The Expanse'. The vessel's roll in the show is part of the Martian Congressional Fleet and serves as a fast intercept patrol destroyer. Versions of the vessel have appeared on at least three occasions in the show with this models version the 'Scipio Africanus' appearing in the first season. The vessel has appeared at least two more times, in the second season during the battle of Ganemede and in season four as part of the UN / Mars fleet patrolling the ring gate.

This is a fan made representation of and tribute to the ship and this fantastic show. It's taken me a considerable amount of time to design and texture this model and is available for anyone to build for themselves free of charge.

The Expanse, Morrigan and MCRN Scipio Africanus and associated names and titles are the property of Legendary Entertainment and Amazon. I do not claim any rights or trademarks to these or their designs.

## **Build / Instruction Notes**

The instructions are laid out with an image of the part / parts and their plan names indicated. In some cases a smaller additional image will also be included with the intention of showing how the part looks once complete. The text following each image is bullet pointed it is suggested to read all the points prior to starting the build of the part. Any important notes or items too look out for during the build are highlighted, underlined and capitalised.

The model has two versions, an armed and unarmed version. The instructions will indicate what parts are to be used for each version

## **Paper Weights + Other Model Components**

170gsm has been used for all outer parts and components

1.0mm 480gsm card has been used for structural support parts.

Regular printer paper has been used for the joining strip page.

The antenna uses what would be considered normal sized toothpicks

I would highly recommend using black or dark grey soft pastel pencils to assist with hiding white spots on the model and join points on the model parts, I used Gioconda brand pencils for the job.

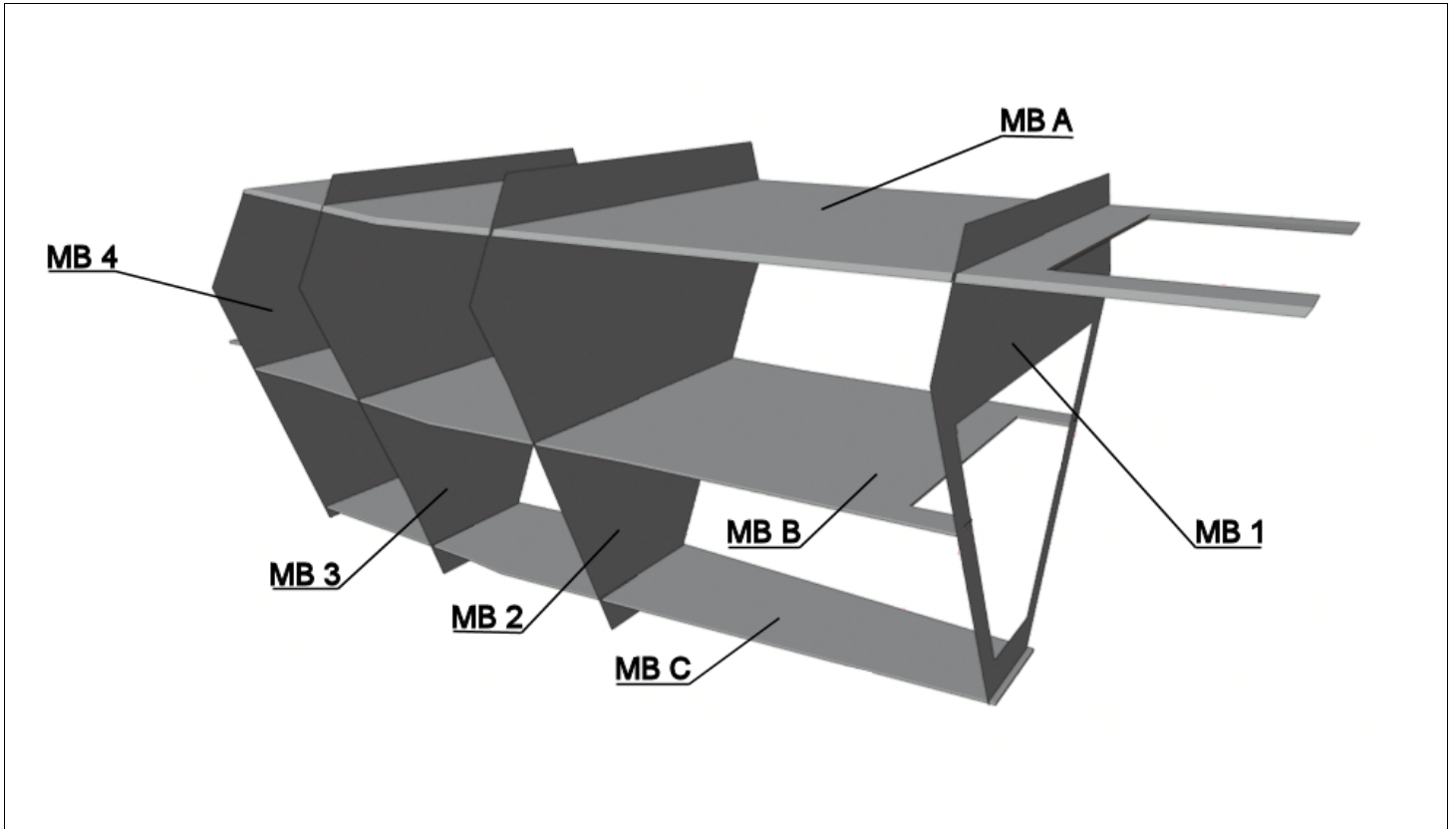
## **Thanks**

I would like to thank all the folk over at <http://www.papermodelers.com> for the support and feedback during my build log.

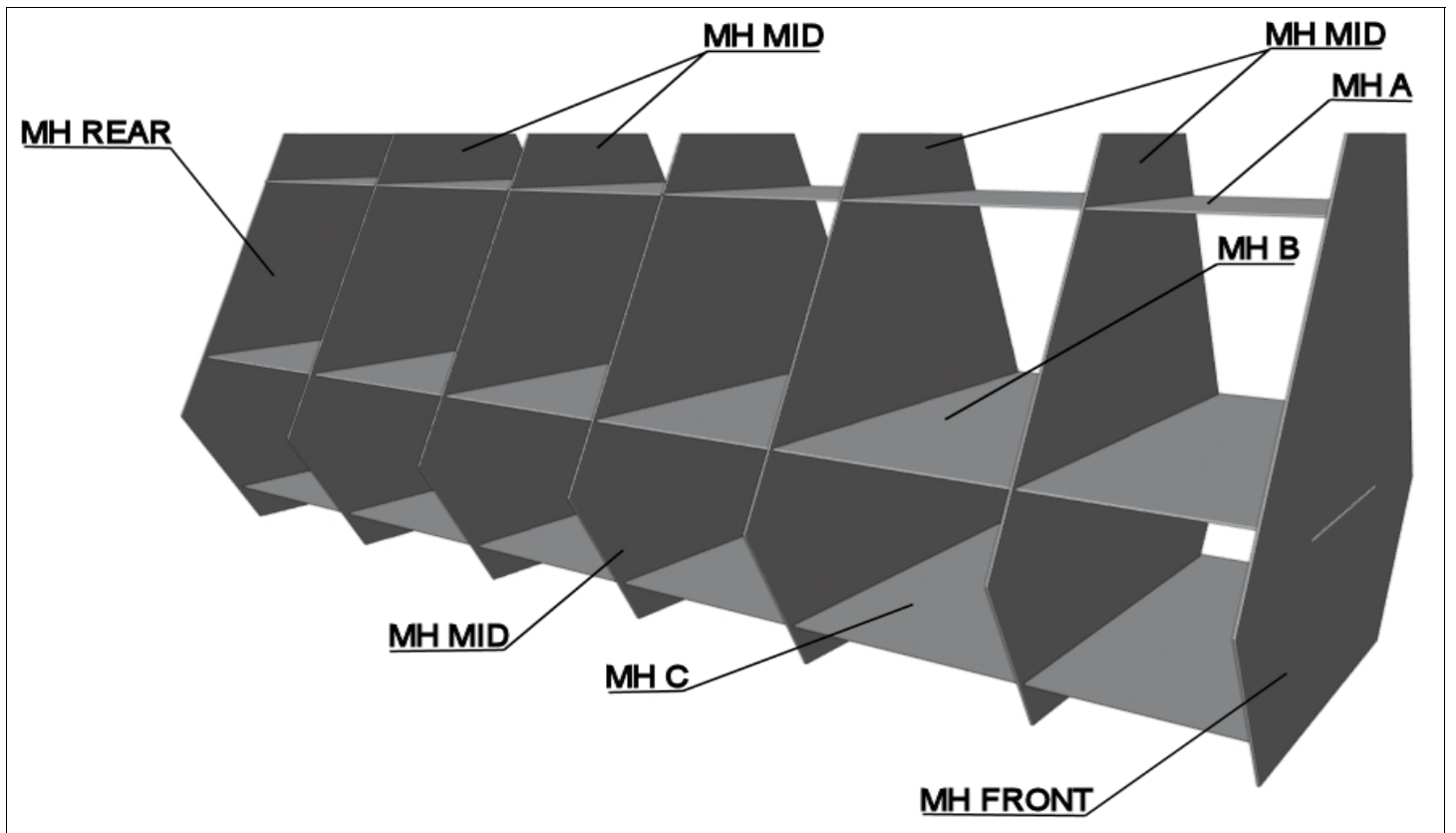
## **Contact**

This is my second model designed from scratch so any; feedback, info or suggests are welcome. These can either be sent via email at [cheesy\\_wotsit33@hotmail.co.uk](mailto:cheesy_wotsit33@hotmail.co.uk) or drop a post in to the model build log here <http://www.papermodelers.com/forum/alternate-dimensions/43713-mcrn-morrigan-class-build-log.html>

## STRUT / SUPPORT

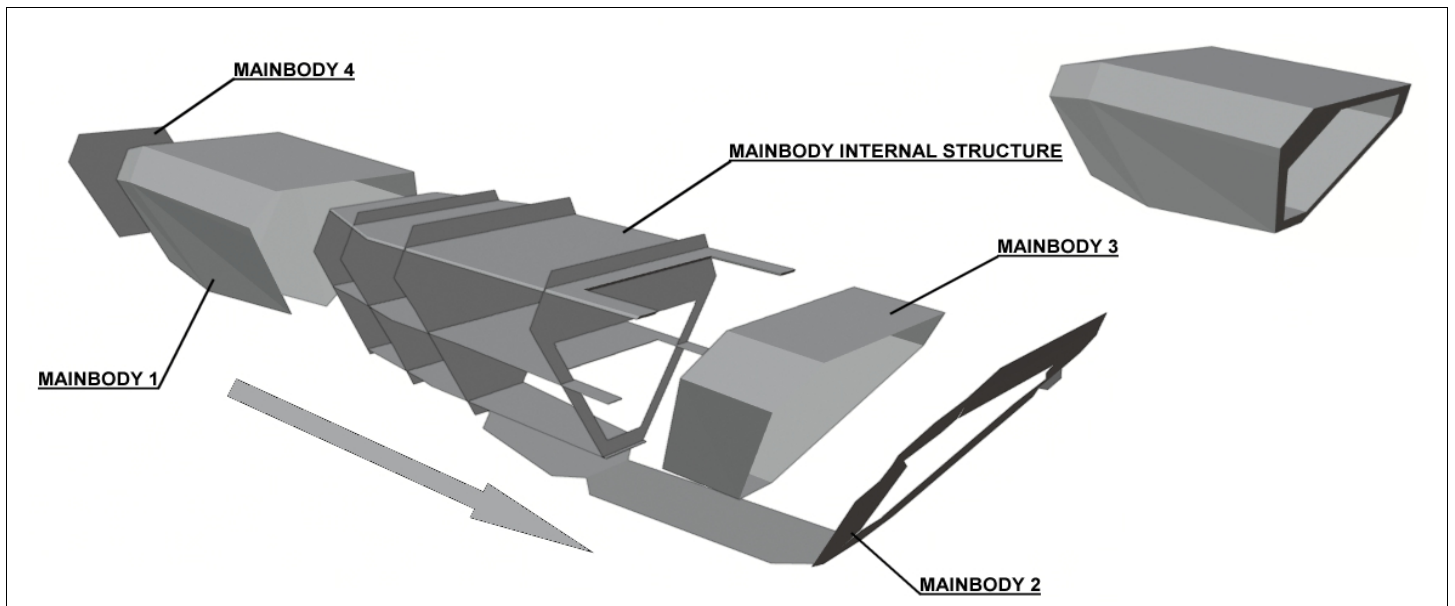


- Assemble the internal support parts for 'MAINBODY'.



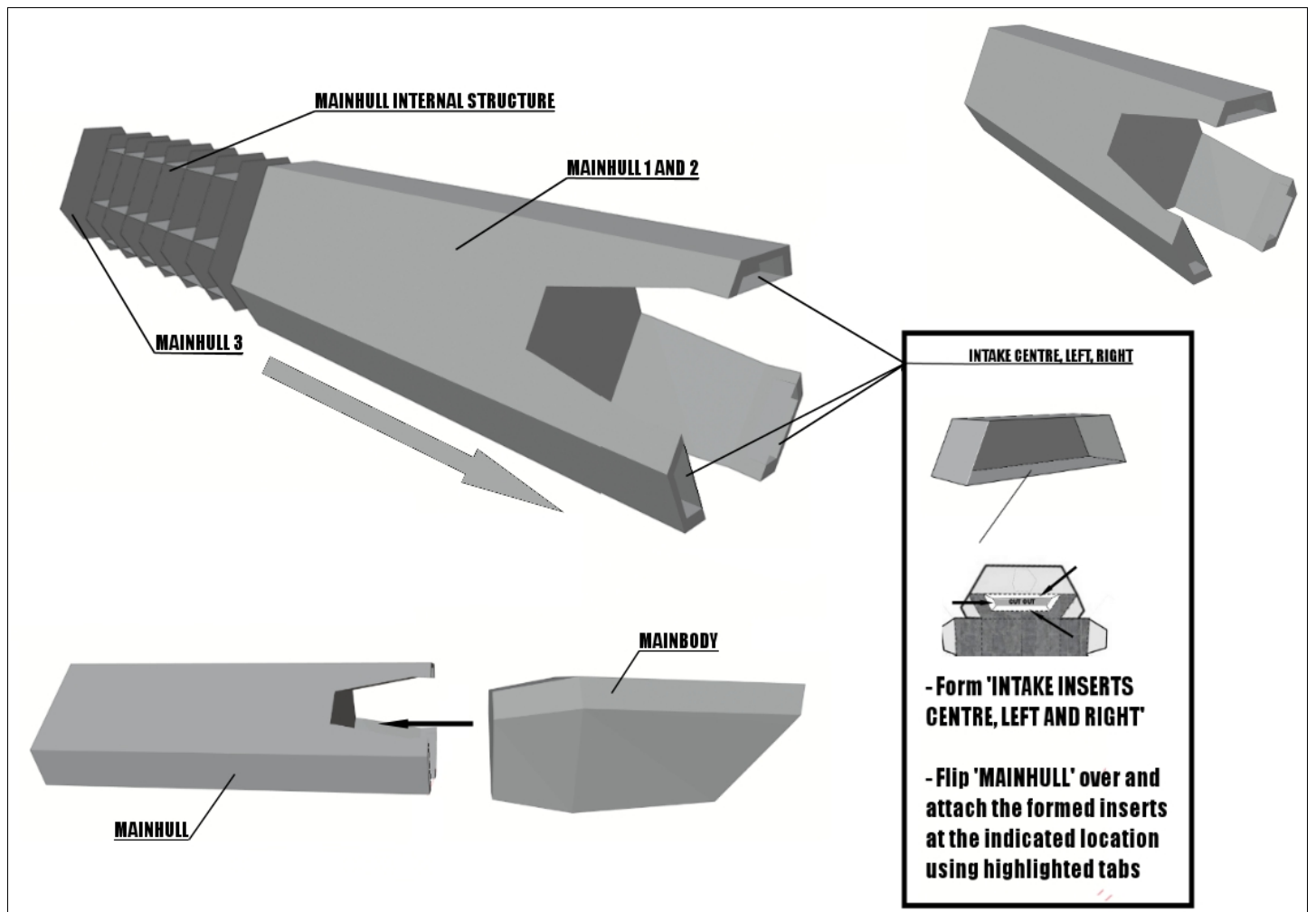
- Assemble the internal support parts for 'MAINHULL'.

## MAINBODY



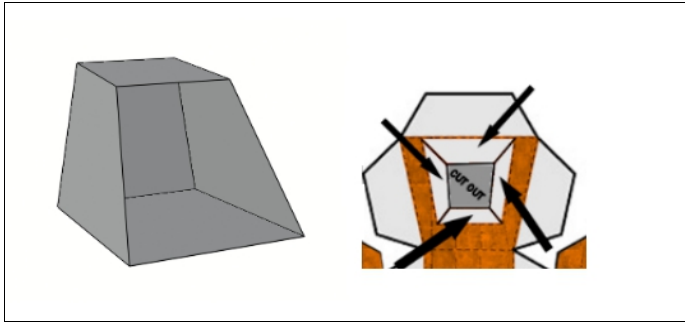
- Assemble 'MAINBODY 3' first then attach to the reverse side of 'MAINBODY 4'.
- Attach 'MAINBODY 2' to 'MAINBODY 1' **DO NOT SECURE THE BOTTOM STRIP TABS YET.**
- Wrap 'MAINBODY 1' around 'MAINBODY INTERNAL STRUCTURE'.
- Attach 'MAINBODY 4' to rear of 'MAINBODY 1'.

## MAINHULL

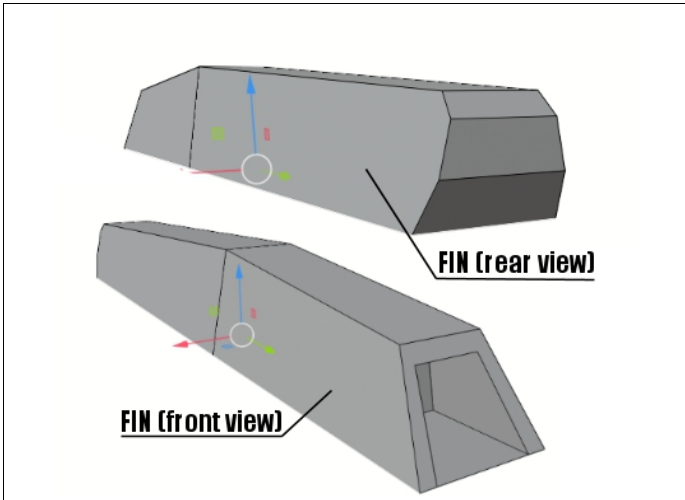


- Join 'MAINHULL 1 and 2' together using JOINSTRIP'.
- Form 'MAINHULL' then insert 'MAINHULL INTERNAL STRUCTURE' inside.
- Attach 'MAINHULL 4' to rear of 'MAINHULL'.
- Slot 'MAINBODY' in to the front of 'MAINHULL'

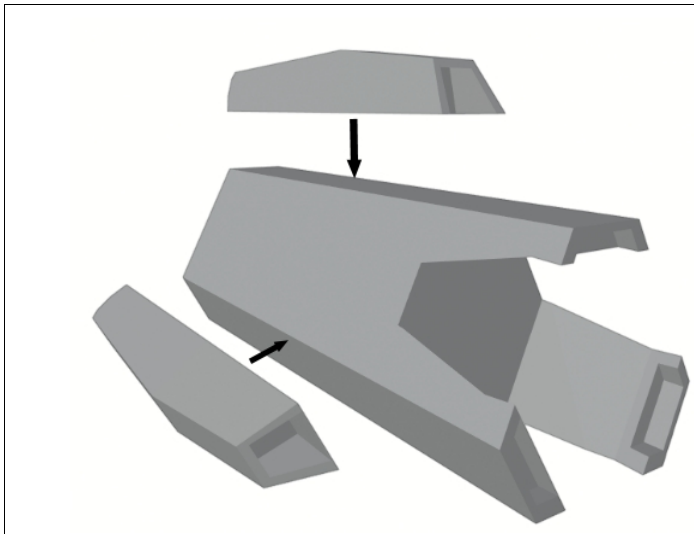
## MAINHULL FINS



- Form 3 x 'FIN INTAKES' to this shape.
- Flip 'FIN' over and stick 'FIN INTAKE' to the back at the shown location using the indicated tabs.
- Repeat for the remaining 2 'FIN's.

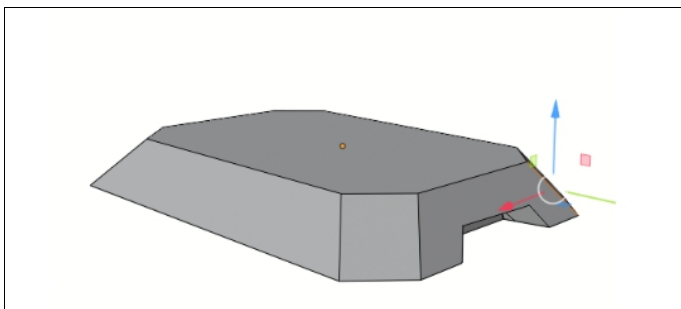


- Form 3 x 'FIN'.

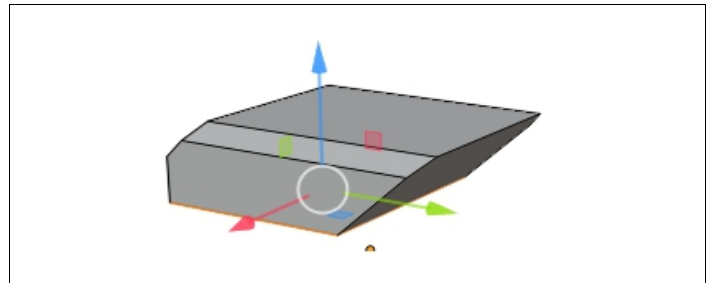


- Attach 3 x 'FIN' to 'MAINHULL'.

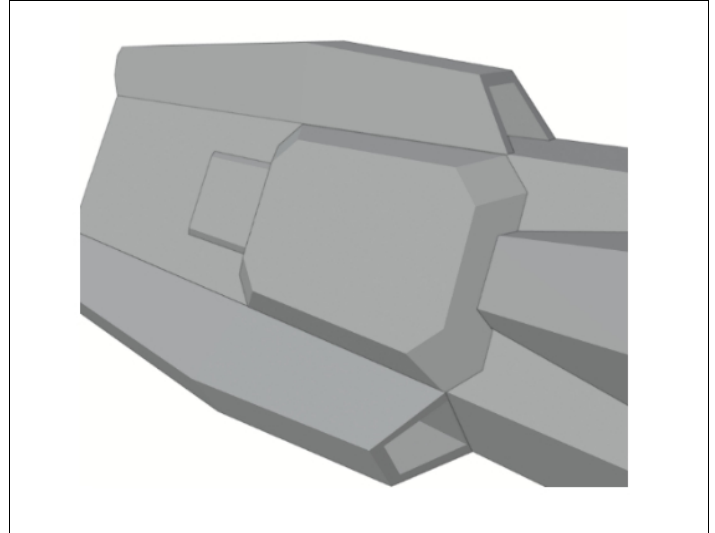
## RAILGUN MOUNT



- 
- Form 'RAILGUN MOUNT LEFT and RIGHT'.

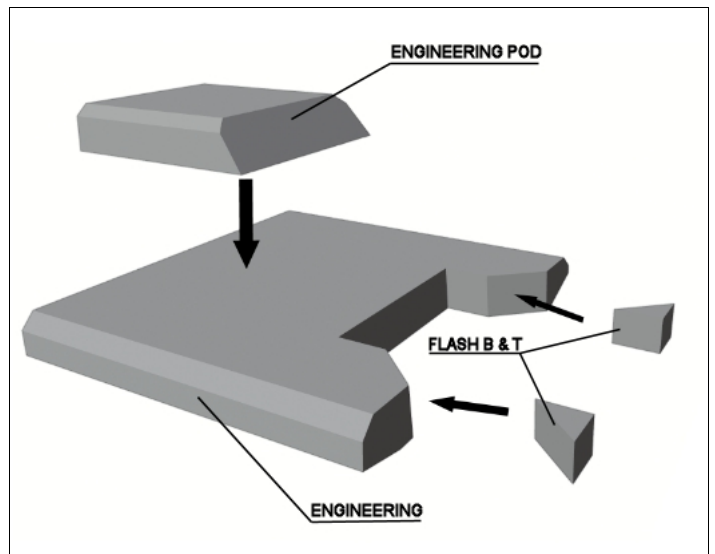


- Form 2 x 'RAILGUN POD'.

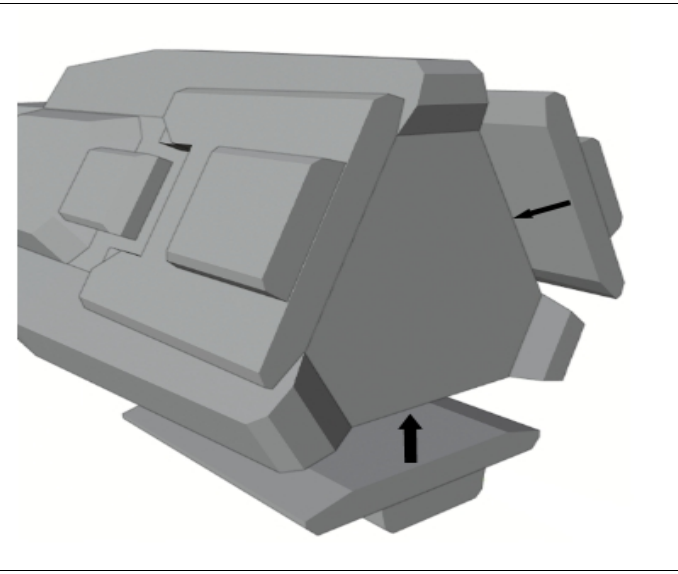


- Attach 'RAILGUN MOUNT RIGHT and LEFT' and 2 x 'RAILGUN POD' to the left and right of 'MAINHULL' as shown.

## ENGINEERING

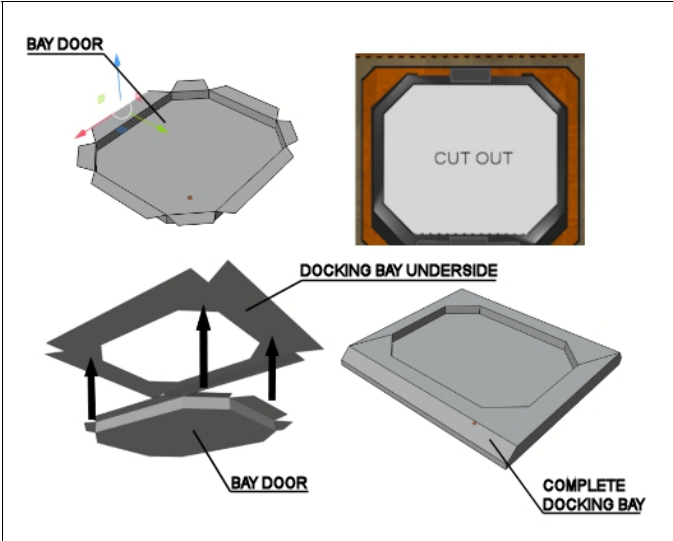


- Form 'ENGINEERING LEFT, RIGHT and BOTTOM'
- Form 3 x 'ENGINEERING POD'
- Form 3 x 'FLASH B and T'
- **ENGINEERING LEFT, RIGHT and BOTTOM' ARE DIFFERENT SHAPES BUT ARE ALL FORMED IN THE SAME WAY.**

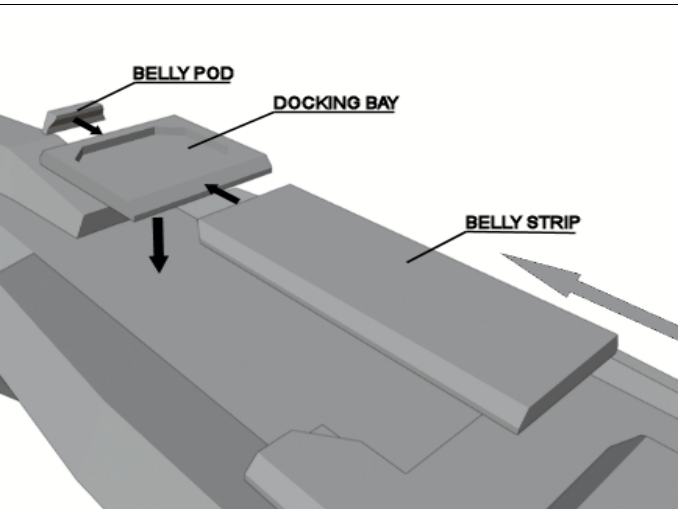


- Attach 'ENGINEERING LEFT, RIGHT and BOTTOM' to 'MAINHULL'
- EACH ENGINEERING SECTION IS UNIQUE IN SHAPE SO PAY ATTENTION TO LEFT, RIGHT AND BOTTOM POSITIONS.

**DOCKING BAY**

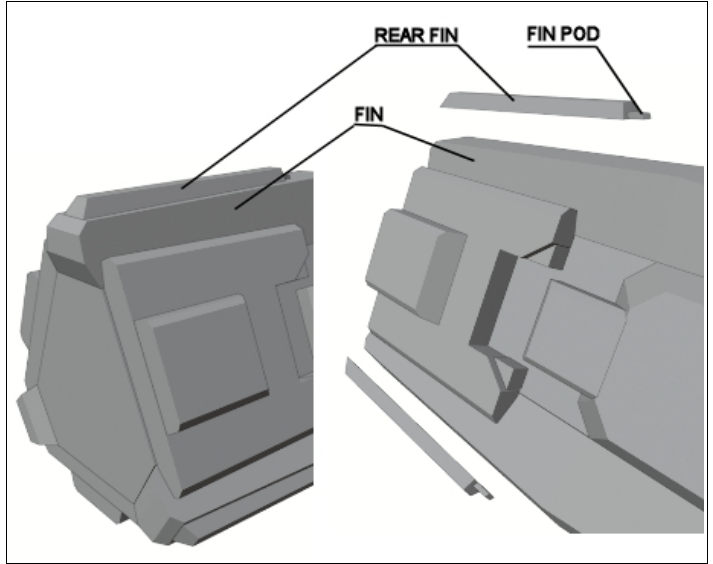


- Form 'BAY DOOR'
- Cut out indicated section of 'DOCKING BAY'
- Flip 'DOCKING BAY' over and attach 'BAY DOOR' to back using the tabs on 'BAY DOOR'.

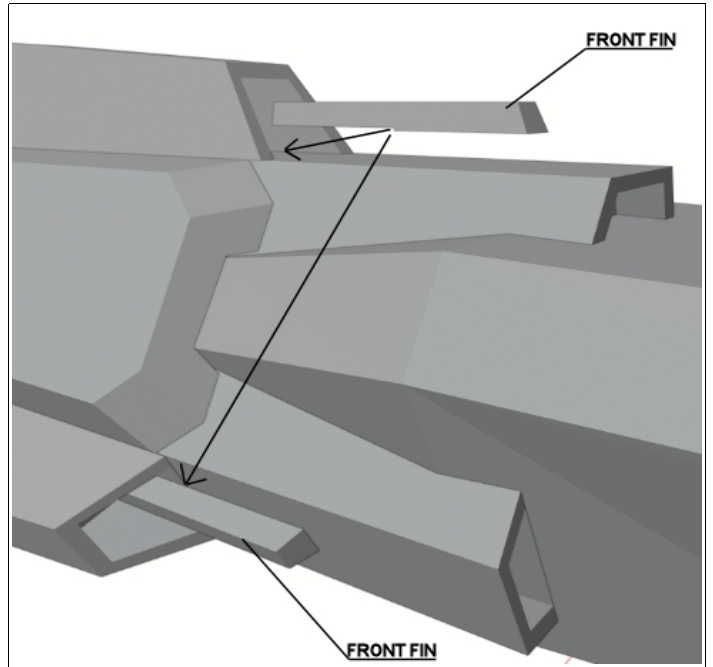


- Form 'BELLY STRIP' and 'BELLY POD'.
- Attach 'DOCKING BAY', 'BELLY STRIP' and 'BELLY POD' to underside of 'MAINHULL'.

**HULL DETAIL**

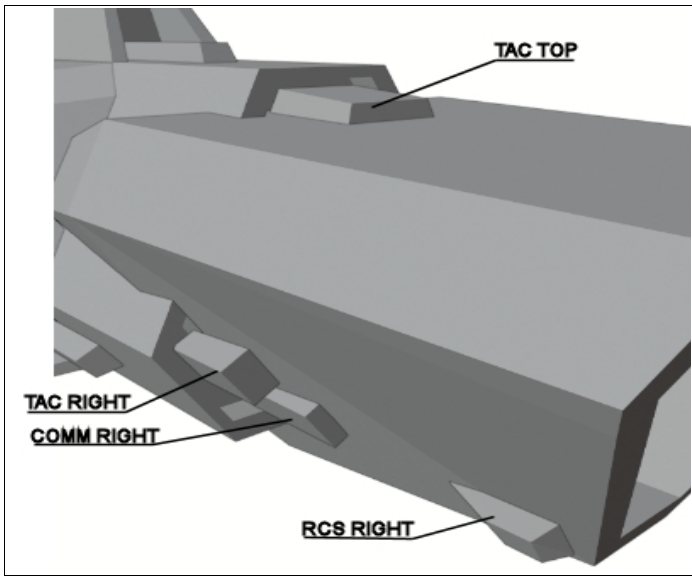


- Form 3 x 'REAR FIN' and 3 x 'FIN POD'.
- Attach to top of each of the 3 x 'FIN'.



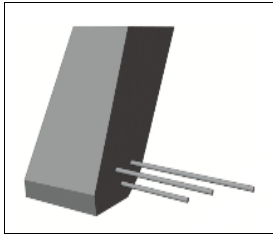
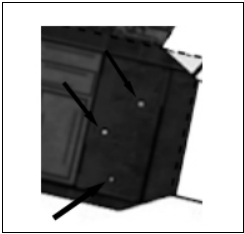
- Form 3 x 'FRONT FIN'.
- Attach to the 3 locations on 'MAINHULL' and partially inside 'FIN'.
- 'FRONT FIN' HAS A SMALL NOTCH MID WAY ALONG ITS LENGTH. THIS IS DESIGNED TO ACCOUNT FOR CARD THICKNESS DISCREPANCIES ON THE PART 'FIN'. IT IS ALSO USED TO HELP INDICATE HOW FAR INSIDE 'FIN' THE PART IS INSERTED (SHOWN BY THE LOCATING ARROWS ABOVE.)



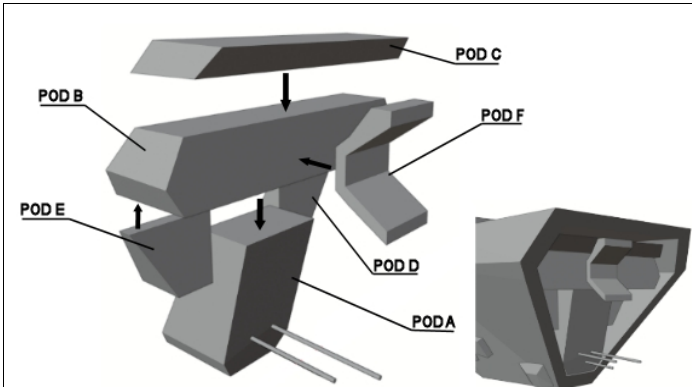


- Form the parts 'TAC TOP', 'TAC RIGHT and LEFT', 'COMM RIGHT and LEFT' and 'RCS RIGHT and LEFT'
- Attach all parts to 'MAINBODY'

**FRONT MODULES**

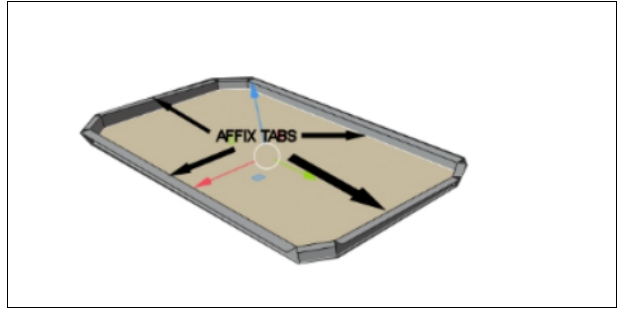


- Stick 'ANTENNA SUPPORT' to 3mm card.
- Flip 'POD A' over and stick to the back at the part location shown in the image above.
- Now punch 3 holes through 'POD A' at the locations shown by the arrows.
- Wrap 'ANTENNA WRAPS A, B, and C' around standard sized toothpicks
- Form 'POD A' and insert the 3 antennas in to the front of the formed part.

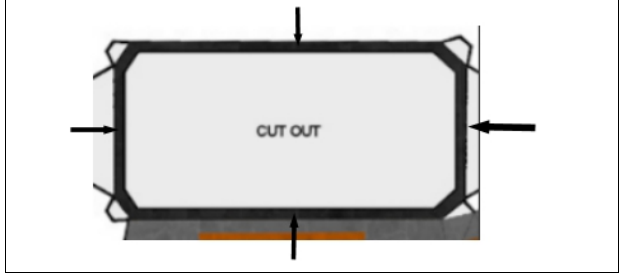


- Form 'PODS B through F'
- Insert in to the front 'MAINBODY'
- **WORK TOP TO BOTTOM START WITH 'POD C' THEN 'POD B', 'POD A', 'POD D AND E, FINISHING WITH 'POD F'.**

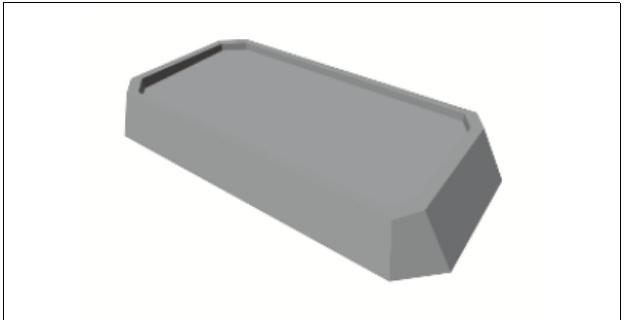
**RAILGUN HOUSING**



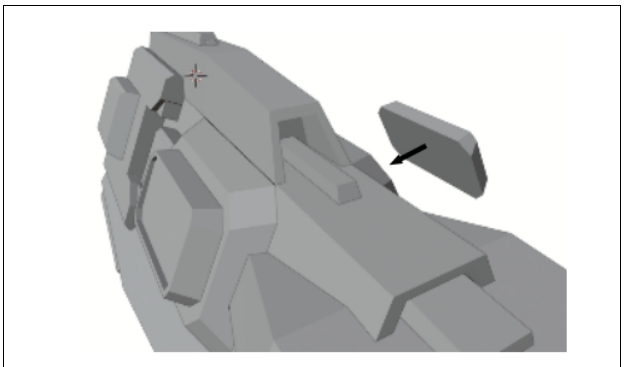
- Form 'RAILGUN INSERT'. There are two options depending on whether the model is to display the rail-guns deployed or housed.



- Flip 'RAILGUN HOUSING' over and attach 'RAILGUN INSERT' at the highlighted locations using the affix tabs.

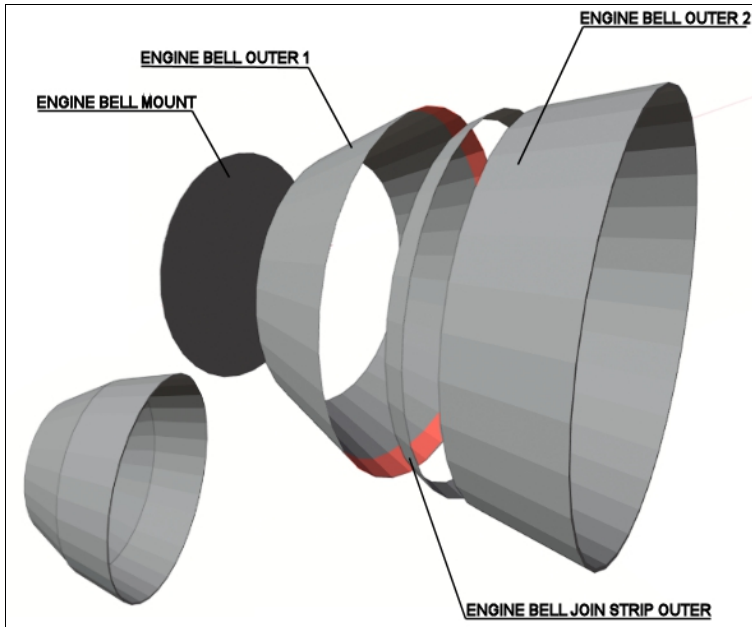


- Form 'RAILGUN HOUSING'.
- Repeat for both sides.

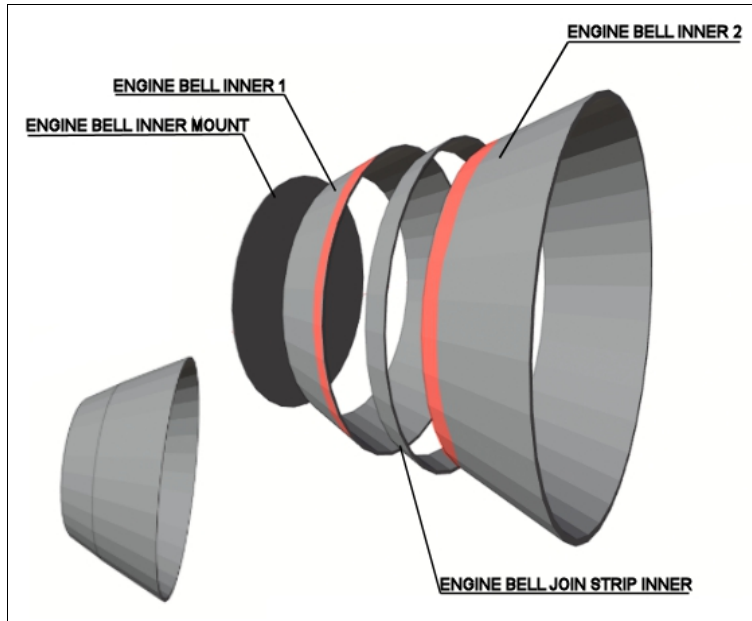


- Attach formed 'RAILGUN HOUSING' to both sides of the model.

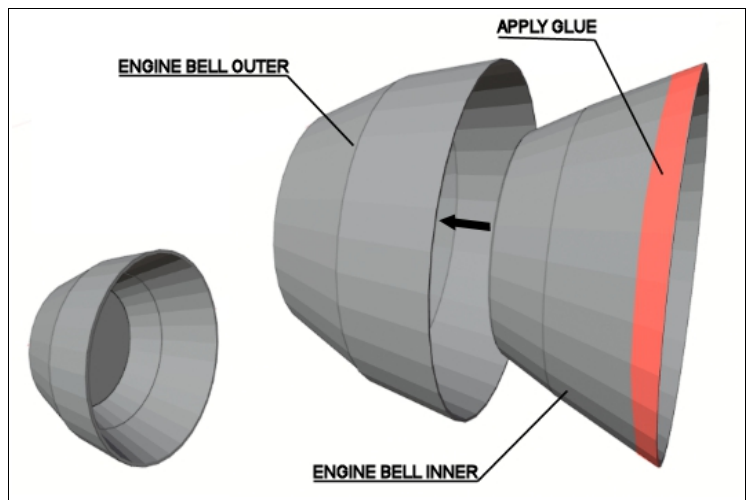
## ENGINE BELL



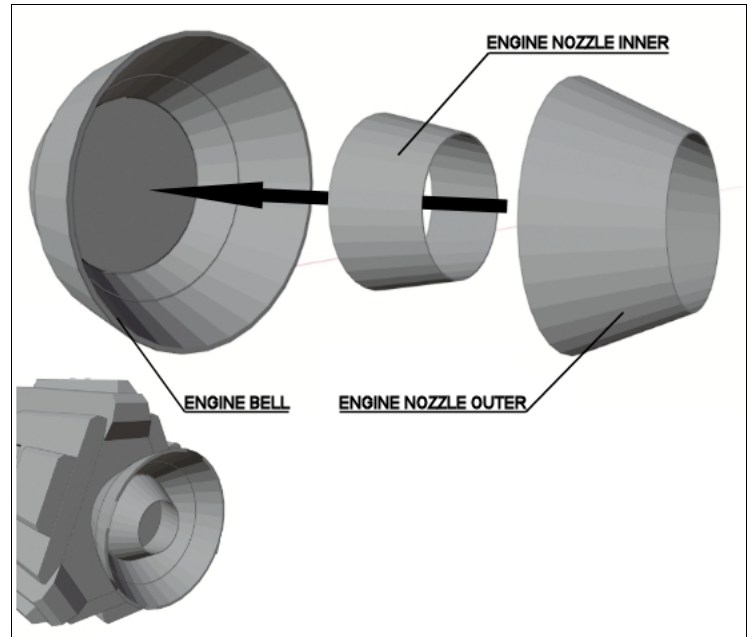
- Form 'ENGINE BELL OUTER 1' and 'ENGINE BELL OUTER 2'.
- Join 'ENGINE BELL OUTER 1' to 'ENGINE BELL OUTER 2' using 'ENGINE BELL JOIN STRIP OUTER'.
- 'ENGINE BELL JOIN STRIP OUTER' should be used on the **INSIDE** (highlighted pink) of the parts being joined.
- Attach to 'ENGINE BELL MOUNT'.



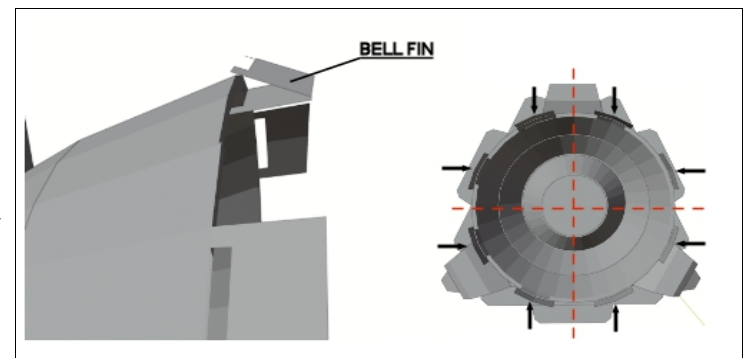
- Form 'ENGINE BELL INNER 1' and 'ENGINE BELL INNER 2'.
- Join 'ENGINE BELL INNER 1' to 'ENGINE BELL INNER 2' using 'ENGINE BELL JOIN STRIP INNER'.
- 'ENGINE BELL JOIN STRIP INNER' should be used on the **OUTSIDE** (highlighted pink) of the parts being joined. Attach to 'ENGINE BELL MOUNT INNER'.
- Attach to 'ENGINE BELL INNER MOUNT'.



- Insert 'ENGINE BELL INNER' in 'ENGINE BELL OUTER'
- Attach the two by gluing around the highlighted (pink) edge of 'ENGINE BELL INNER'

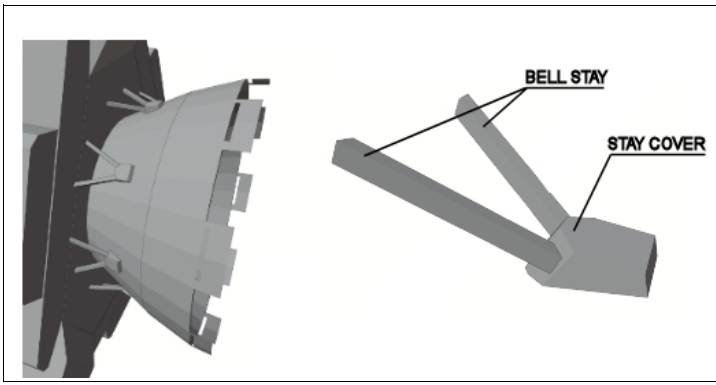


- Form 'ENGINE NOZZLE INNER' and 'ENGINE NOZZLE OUTER'.
- Attach to 'ENGINE BELL MOUNT INNER' inside the formed 'ENGINE BELL'.
- Attach fully formed 'ENGINE BELL' to the back of 'MAINHULL'.



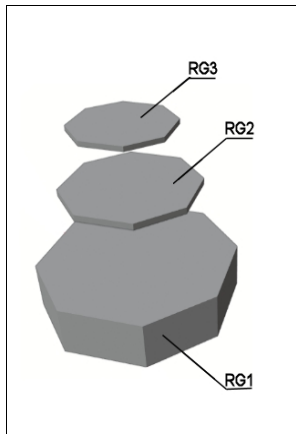
- Attach 8 x 'BELL FIN' to the outer edge of the 'ENGINE BELL'. Layout /location of 'BELL FINS' is highlighted by the arrows above.
- Each 'BELL FIN' is folded in half and attached via the exposed stays.



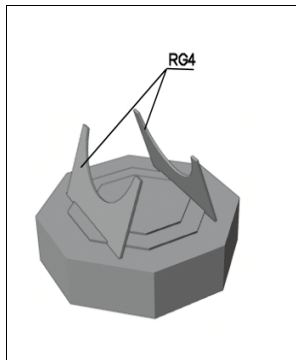


- Form 16 x 'BELL STAY' and 8 x 'STAY COVER'
- Apply to the 'ENGINE BELL' as shown
- Try and space the stays evenly around the edge of the rear of 'MAINHULL'. There are no guide markers shown for spacing and positioning as the size of the stays means that there are minor differences between builders abilities.

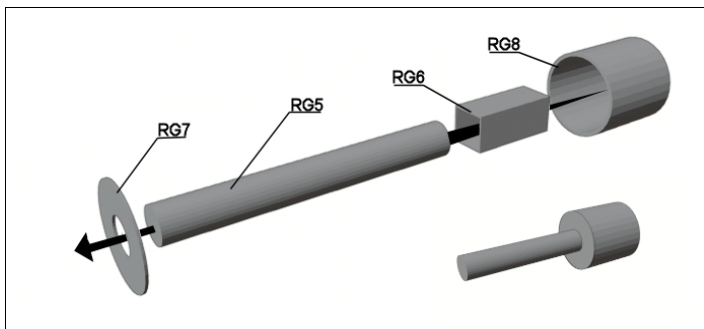
## **RAILGUN**



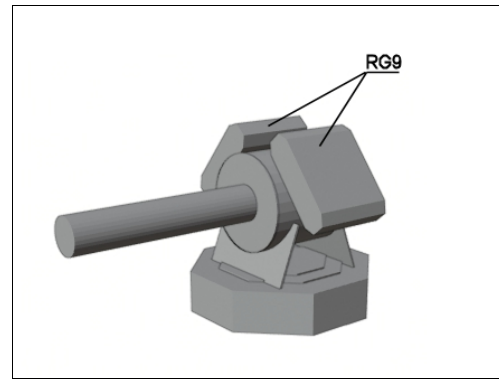
- Attach 'RG3' to 'RG2' and then attach these to 'RG1'.
- Cut two slots at the indicated locations on 'RG1' / 'RG2'.
- Form RG1.



- Stick 3 x 'RG4' together, do this twice to
- Insert in to the slots cut in 'RG1' to complete Rail-gun Assembly.

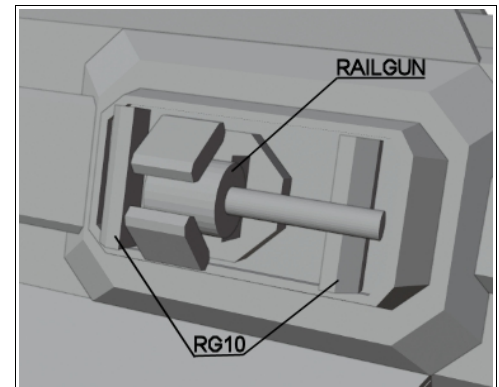


- Form 'RG5', 'RG6' and 'RG8'
- Insert 'RG5' inside 'RG6' and then insert this in to 'RG8'
- Slide 'RG7' over 'RG5' to complete the Rail-gun Barrel.



- Mount Rail-gun Barrel on to the top of the Rail-gun Assembly. Adjust angle / position of RG4 as required.
- Form 2 x 'RG9'
- Attach to each side of 'RG8'

- **COMPLETE THE ABOVE STEPS TO FORM THE SECOND RAILGUN.**



- Form 4 x 'RG10'
- Mount 'RG10' and 'RAILGUN' to 'RAILGUN HOUSING'
- **REPEAT ON BOTH SIDES OF THE MODEL.**