

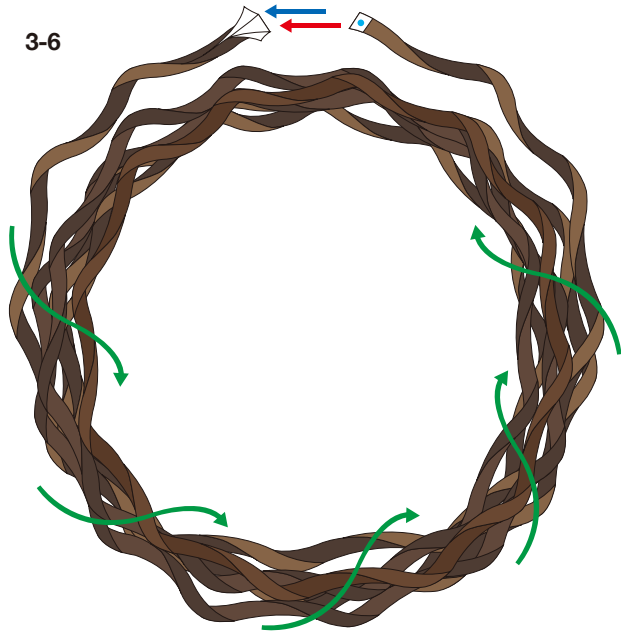
Ivy Christmas wreath (pop style): Assembly Instructions

© Canon Inc. © PAOPAO Inc.

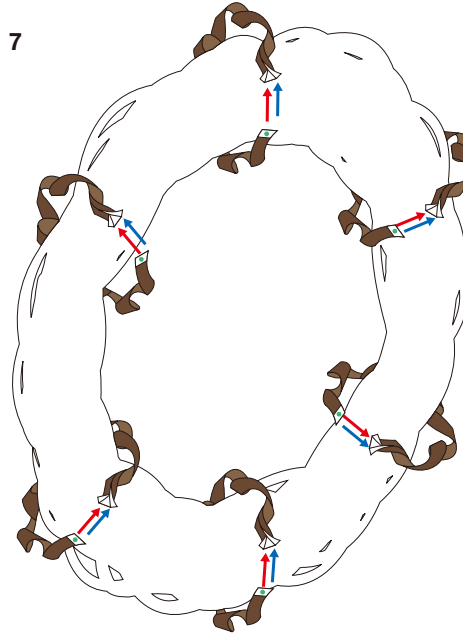


Main body (continued)

3-6

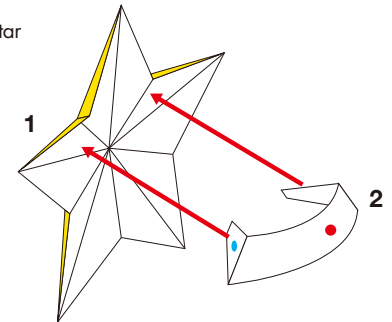


7

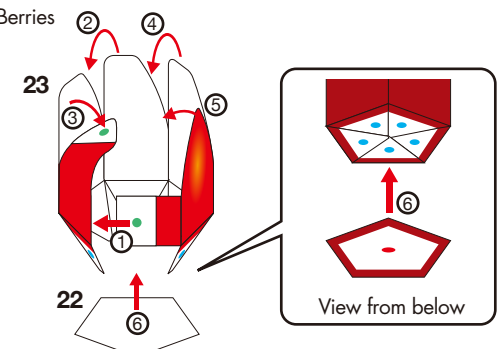


- * Start by constructing just one ring, then wrap the other rings around the first.
- * Although rings 3 - 5 may be wrapped in any order, wrap ring 6 last, as shown above.
- * Since too much wrapping at the end can make a ring too short, avoid excessive wrapping of the rings at the end.

Star

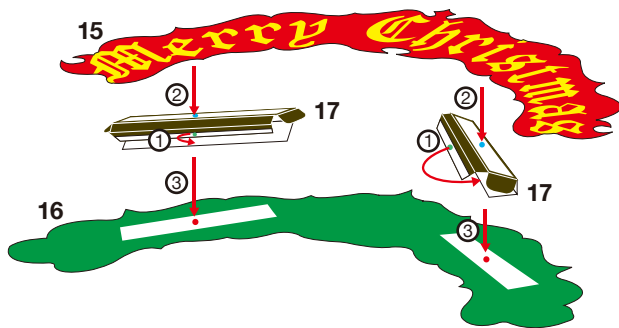


Berries

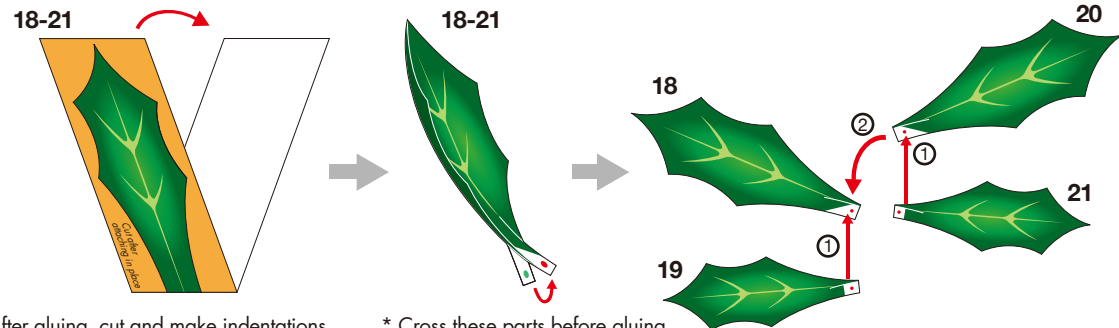


- * Glue after folding to give the berry a rounded shape.
- * Build the different-colored berry parts in the same way.

Message plate



Holly leaves



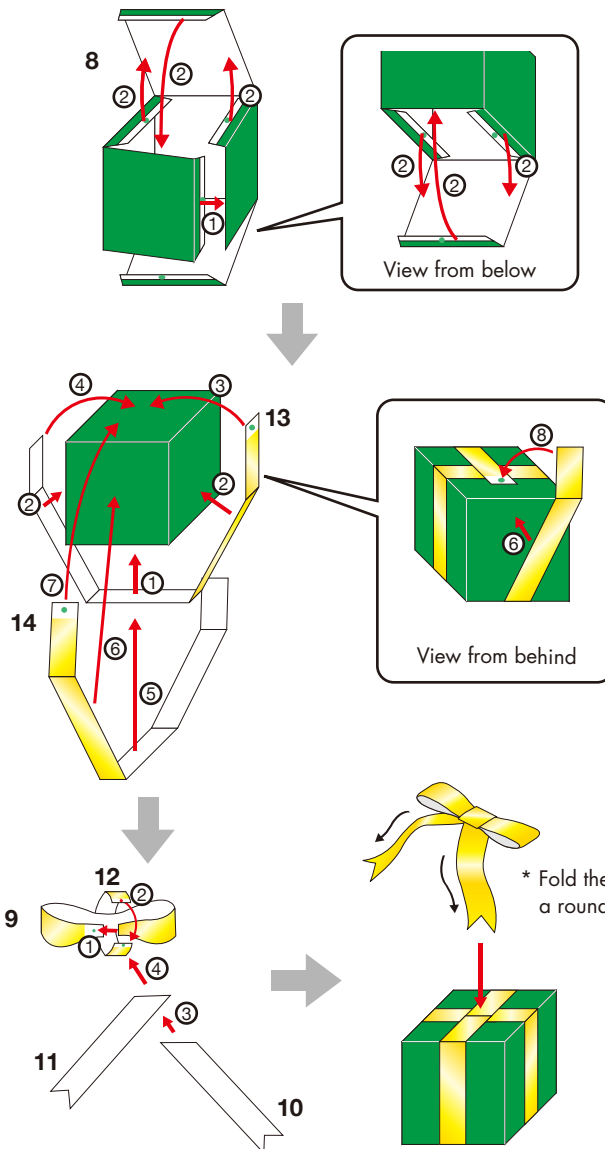
- * After gluing, cut and make indentations along the inside cut and indentation lines.
- * Cross these parts before gluing to make the leaves curve inward.

Ivy Christmas wreath (pop style): Assembly Instructions

© Canon Inc. © PAOPAO Inc.

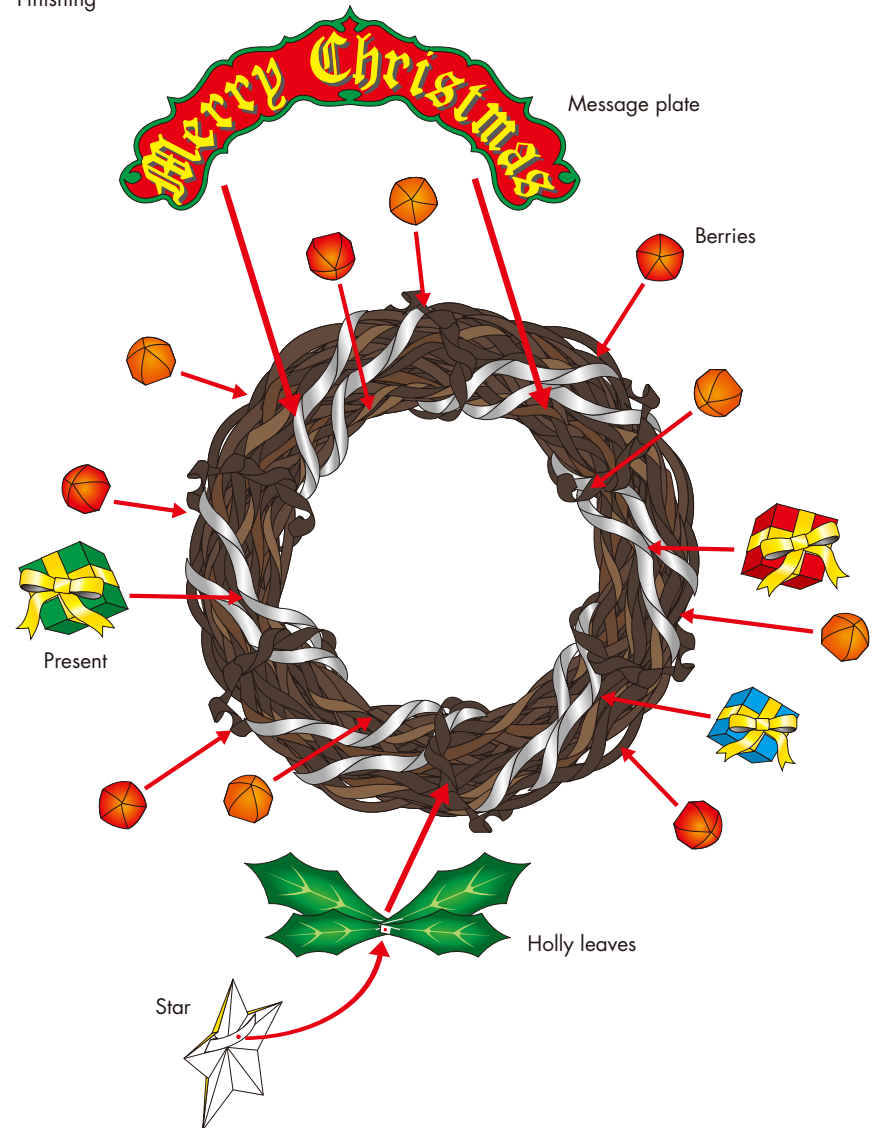
Canon

Present



* Build the different-colored present parts in the same way.

Finishing



* Finish the wreath by attaching the rear (or bottom) of each part to the flat surfaces of the main part (3 - 7), maintaining a good balance by referring to the photographs of the completed model. (We recommend attaching the star and holly leaves parts to part 7 of the main body.)